


LOC I-INT 110.3	APP CRS 332°	Rwy Idg 6655
		TDZE 941
		Apt Elev 969

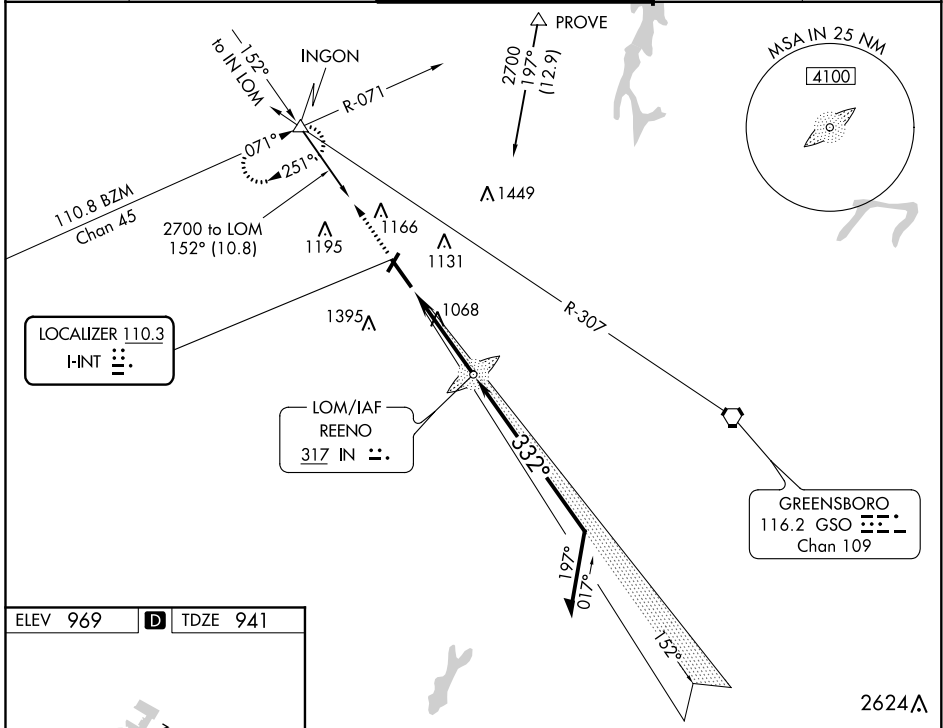
ILS or LOC RWY 33

SMITH REYNOLDS (INT)

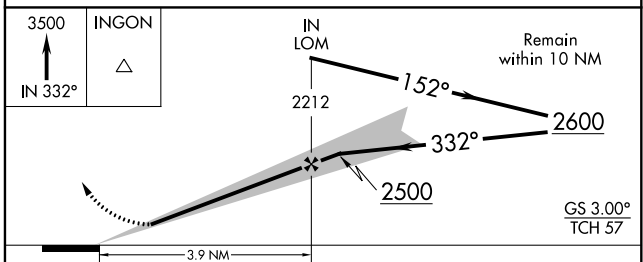
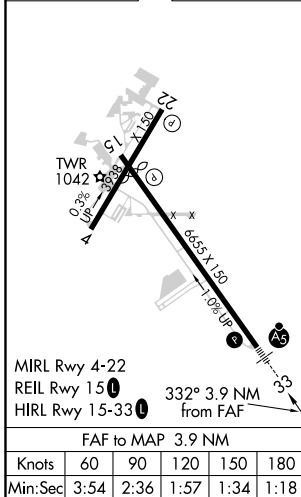
⚠ For inoperative MALSR, when using Piedmont Triad Intl altimeter setting, increase S-ILS 33 visibility to RVR 5000 all Cats. When local altimeter setting not received, use Piedmont Triad Intl altimeter setting and increase S-ILS 33 DA to 1180 feet and all MDA 40 feet; increase S-LOC 33 Cat C visibility to RVR 4000 and increase Circling Cat C visibility ¼ SM. ADF Required. Circling Rwy 4, 22 NA at night.

MALSR  **MISSED APPROACH:** Climb to 3500 via 332° bearing from REENO LOM to INGON INT and hold, continue climb-in-hold to 3500.

ATIS 121.3	GREENSBORO APP CON 124.35 269.225	WINSTON-SALEM TOWER * 123.75 (CTAF) 0 257.8	GND CON 128.25	UNICOM 122.95
----------------------	---	--	--------------------------	-------------------------



ELEV 969	D	TDZE 941
----------	----------	----------



CATEGORY	A	B	C	D
S-ILS 33		1141/24	200 (200-½)	
S-LOC 33		1320/24	379 (400-½)	NA
CIRCLING	1480-1 511 (600-1)	1580-1 611 (700-1)	1700-2 731 (800-2)	NA

SE-2, 17 JUN 2021 to 15 JUL 2021

SE-2, 17 JUN 2021 to 15 JUL 2021

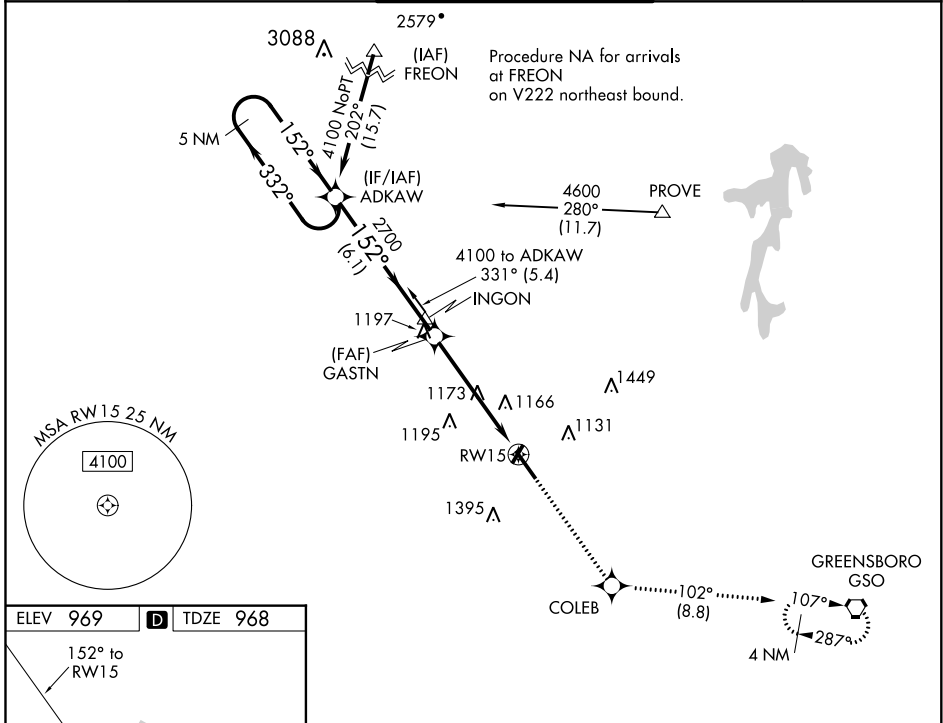
APP CRS	Rwy Idg	6069
152°	TDZE	968
	Apt Elev	969

RNAV (GPS) RWY 15

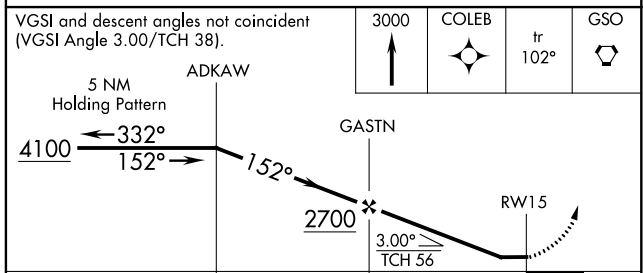
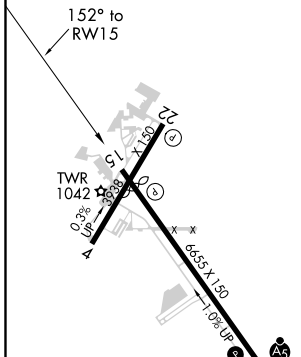
SMITH REYNOLDS (INT)

RNP APCH.	<p>When local altimeter setting not received, use Piedmont Triad Intl altimeter setting and increase all MDA 40 feet and Circling Cats C/D visibility ¼ SM. Circling Rwy 4, 22 NA at night. Rwy 15 helicopter visibility reduction below ¾ SM NA.</p>	<p>MISSED APPROACH: Climb to 3000 direct COLEB and on track 102° to GSO VORTAC and hold.</p>
-----------	---	--

ATIS 121.3	GREENSBORO APP CON 124.35 269.225	WINSTON-SALEM TOWER ★ 123.75 (CTAF) 0 257.8	GND CON 128.25	UNICOM 122.95
----------------------	---	---	--------------------------	-------------------------



ELEV 969	D	TDZE 968
----------	----------	----------



CATEGORY	A	B	C	D
LNAV MDA	1440-1	472 (500-1)	1440-1 3/8	472 (500-1 3/8)
CIRCLING	1480-1 511 (600-1)	1580-1 611 (700-1)	1700-2 731 (800-2)	1760-2 1/2 791 (800-2 1/2)

SE-2, 17 JUN 2021 to 15 JUL 2021


SE-2, 17 JUN 2021 to 15 JUL 2021

WAAS CH 82011 W33A	APP CRS 332°	Rwy Idg TDZE 941 Apt Elev 969
--	------------------------	---

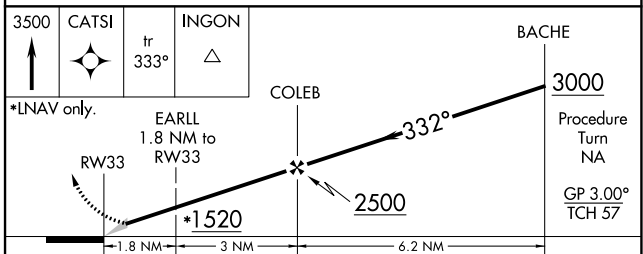
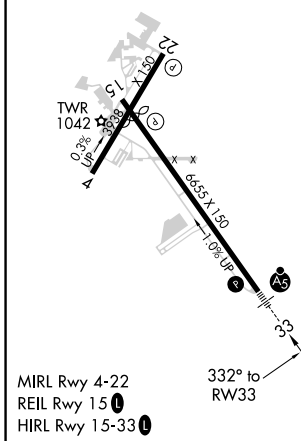
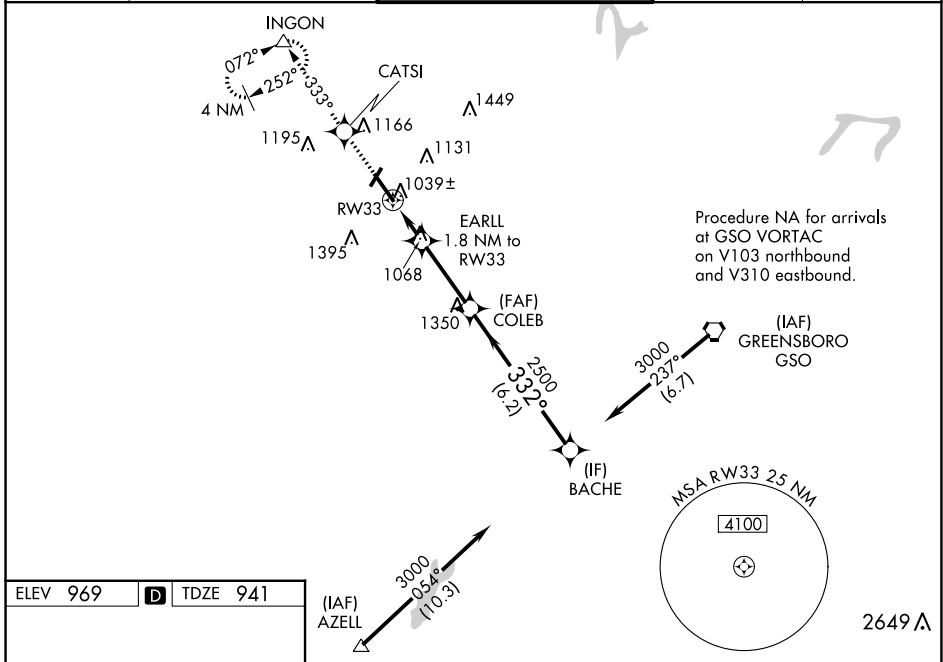
RNAV (GPS) RWY 33

SMITH REYNOLDS (INT)

⚠ For inoperative MALSR, when using Piedmont Triad Intl altimeter setting, increase LPV all Cats visibility to 1 mile. Baro-VNAV NA when using Piedmont Triad Intl altimeter setting. For uncompensated Baro-VNAV systems, LNAV/VNAV NA below -1.6°C (4°F) or above 47°C (116°F). DME/DME RNP-0.3 NA. When local altimeter setting not received, use Piedmont Triad Intl altimeter setting; increase LPV DA to 1180 feet, LNAV/VNAV DA to 1446 feet; increase LNAV/VNAV all Cats and Circling Cats C/D visibility ¼ SM. Circling Rwy 4, 22 NA at night. ** RVR 1800 authorized with use of FD or AP or HUD to DA, NA when using Piedmont Triad Intl altimeter setting.

MALSR
 MISSED APPROACH:
 Climb to 3500 direct CATSI and on 333° track to INCON and hold, continue climb-in-hold to 3500.

ATIS 121.3	GREENSBORO APP CON 124.35 269.225	WINSTON-SALEM TOWER ★ 123.75 (CTAF) 0 257.8	GND CON 128.25	UNICOM 122.95
----------------------	---	---	--------------------------	-------------------------



CATEGORY	A	B	C	D
LPV DA**	1141/24 200 (200-½)			
LNAV/VNAV DA	1407/60 466 (500-1¼)			
LNAV MDA	1380/24	439 (500-½)	1380/40 439 (500-¾)	1380/50 439 (500-1)
CIRCLING	1480-1 511 (600-1)	1580-1 611 (700-1)	1700-2 731 (800-2)	1760-2½ 791 (800-2½)

SE-2, 17 JUN 2021 to 15 JUL 2021

SE-2, 17 JUN 2021 to 15 JUL 2021