

BLOCC TWO ARRIVAL

GREENSBORO, NORTH CAROLINA

GREENSBORO APP CON
 124.35 269.225 (250°-049°)
 126.6 327.075 (050°-249°)
 GSO D-ATIS
 128.55
 INT ATIS
 121.3

SMITH
 REYNOLDS

PIEDMONT TRIAD
 INTL

RALEIGH-DURHAM
 117.2 RDU
 Chan 119

GREENSBORO
 116.2 GSO
 Chan 109
 N36° 02.74'
 W79° 58.58'

R-152
 3700
 332°
 (35)

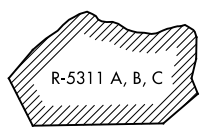
R-254

BLOCC
 N35° 32.93' W79° 36.56'
 TURBOJET VERTICAL NAVIGATION
 PLANNING INFORMATION
 Expect 11000 250K

VACUM
 N35° 27.93'
 W79° 36.24'

(5)
 5 NM
 (20)
 11000
 360°
 (15)

SANDHILLS
 111.8 SDZ
 Chan 55
 N35° 12.93' - W79° 35.28'



TENNI
 N34° 46.90' - W80° 03.81'
 TURBOJET VERTICAL NAVIGATION
 PLANNING INFORMATION
 Expect FL210

R-225
 (35)

11000
 043°
 (74)

COLUMBIA
 114.7 CAE
 Chan 94
 N33° 51.43' - W81° 03.23'
 L-24, H-9-12

NOTE: DME required.
 NOTE: RADAR required.

NOTE: Chart not to scale.

COLUMBIA TRANSITION [CAE.BLOCC2]: From over CAE VORTAC on CAE R-043 and SDZ R-225 to SDZ VORTAC then on SDZ R-360 to BLOCC. Thence. . .

. . . from over BLOCC on GSO R-152 to GSO VORTAC. Expect RADAR vectors to final approach course.

BLOCC TWO ARRIVAL

GREENSBORO, NORTH CAROLINA

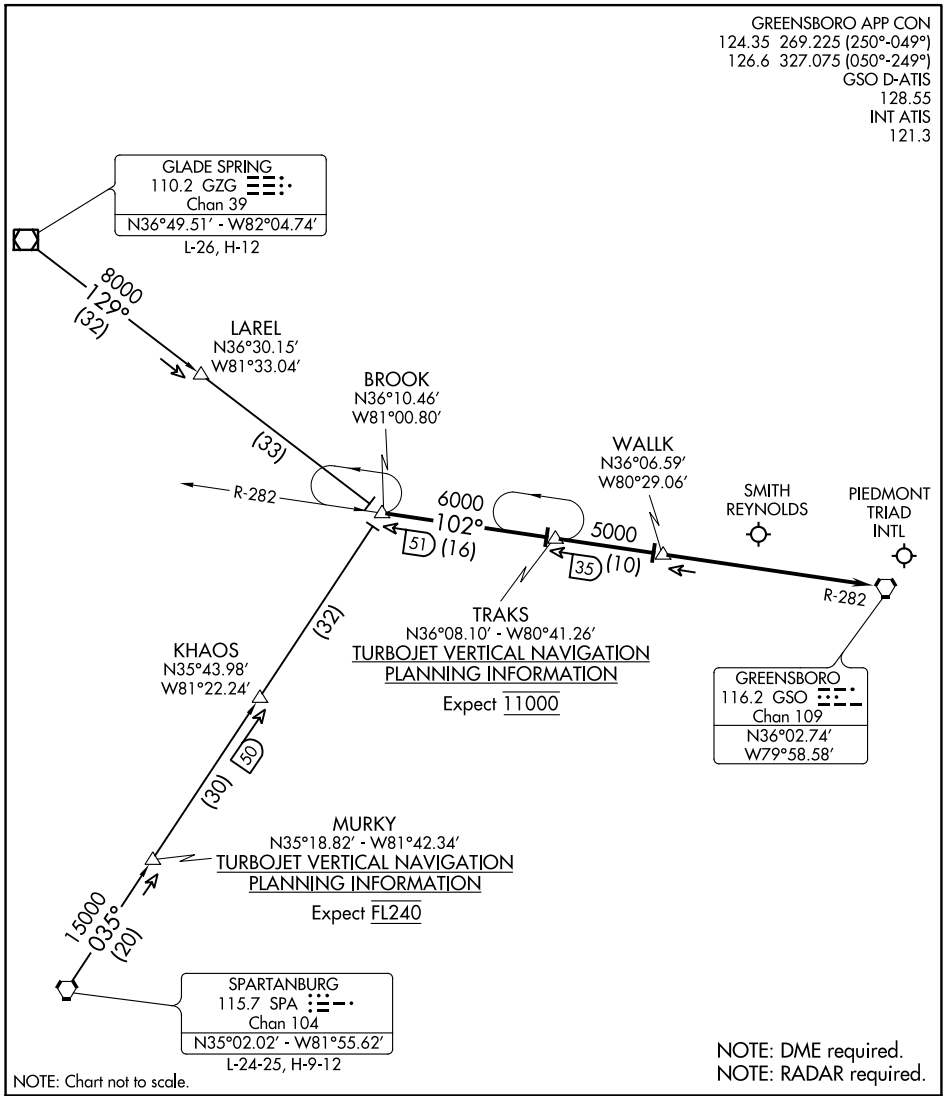
SE-2, 17 JUN 2021 to 15 JUL 2021

SE-2, 17 JUN 2021 to 15 JUL 2021

BROOK FOUR ARRIVAL

GREENSBORO, NORTH CAROLINA

GREENSBORO APP CON
 124.35 269.225 (250°-049°)
 126.6 327.075 (050°-249°)
 GSO D-ATIS
 128.55
 INT ATIS
 121.3



SE-2, 17 JUN 2021 to 15 JUL 2021

SE-2, 17 JUN 2021 to 15 JUL 2021

NOTE: Chart not to scale.

NOTE: DME required.
NOTE: RADAR required.

GLADE SPRING TRANSITION (GZG.BROOK4): From over GZG VOR/DME on GZG R-129 to BROOK INT. Thence. . . .

SPARTANBURG TRANSITION (SPA.BROOK4): From over SPA VORTAC on SPA R-035 to BROOK INT. Thence. . . .

. . . .from over BROOK via GSO R-282 to TRAKS, then on GSO R-282 to WALK, then on GSO R-282 to GSO VORTAC. Expect RADAR vectors to final approach course.

BROOK FOUR ARRIVAL

GREENSBORO, NORTH CAROLINA

HENBY THREE ARRIVAL

GREENSBORO, NORTH CAROLINA

GREENSBORO APP CON
 124.35 269.225 (250°-049°)
 126.6 327.075 (050°-249°)
 GSO D-ATIS
 128.55
 INT ATIS
 121.3

LYNCHBURG
 109.2 LYH --
 Chan 29
 N37°15.27' - W79°14.18'
 L-26-36, H-10-12

ROANOKE
 109.4 ROA --
 Chan 31
 N37°20.61' - W80°04.22'
 L-26, H-10-12

HENBY
 N36°43.17' - W80°01.49'
 Turbojets: Expect 12000

SMITH
 REYNOLDS

PIEDMONT
 TRIAD
 INTL

GREENSBORO
 116.2 GSO --
 Chan 109
 N36°02.74' - W79°58.58'

NOTE: DME required.

NOTE: Chart not to scale.

ARRIVAL ROUTE DESCRIPTION

LYNCHBURG TRANSITION (LYH.HENBY3): From over LYH VOR/DME on LYH R-235 to HENBY INT. Thence. . .

ROANOKE TRANSITION (ROA.HENBY3): From over ROA VOR/DME on ROA R-181 to HENBY INT. Thence. . .

. . . from over HENBY on GSO R-360 to GSO VORTAC, thence. . . expect RADAR vectors to final approach course.

HENBY THREE ARRIVAL

(HENBY.HENBY3) 03JAN19

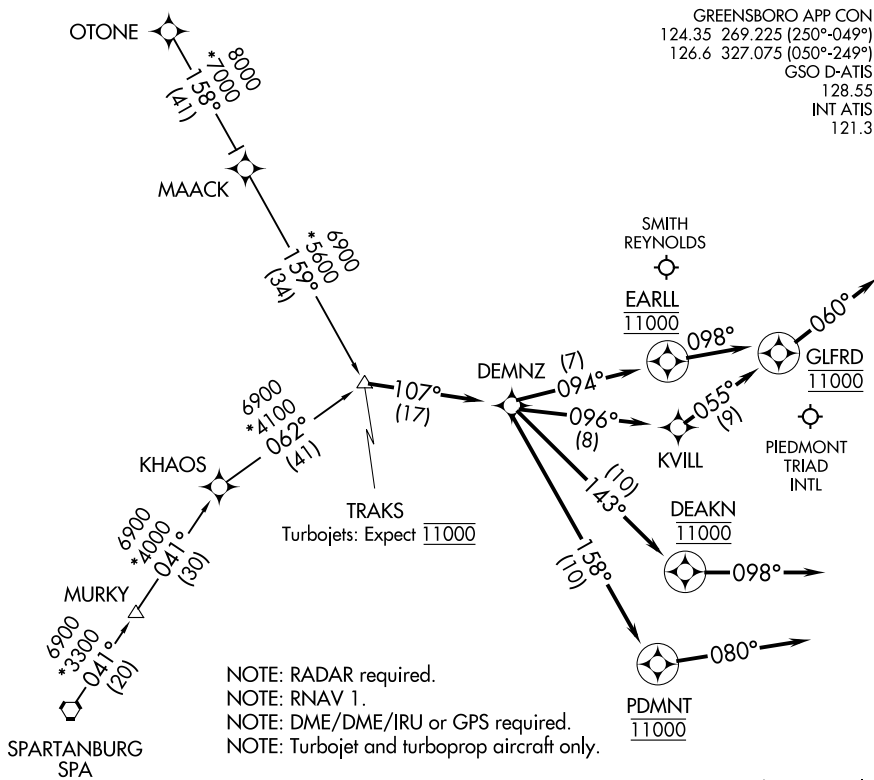
GREENSBORO, NORTH CAROLINA

SE-2, 17 JUN 2021 to 15 JUL 2021

SE-2, 17 JUN 2021 to 15 JUL 2021

TRAKS THREE ARRIVAL (RNAV)

GREENSBORO, NORTH CAROLINA



GREENSBORO APP CON
 124.35 269.225 (250°-049°)
 126.6 327.075 (050°-249°)
 GSO D-ATIS
 128.55
 INT ATIS
 121.3

NOTE: RADAR required.
 NOTE: RNAV 1.
 NOTE: DME/DME/IRU or GPS required.
 NOTE: Turbojet and turboprop aircraft only.

NOTE: Chart not to scale.

ARRIVAL ROUTE DESCRIPTION

OTONE TRANSITION (OTONE.TRAKS3)

SPARTANBURG TRANSITION (SPA.TRAKS3)

GSO: From TRAKS on track 107° to DEMNZ.

LANDING RUNWAY 05L: From DEMNZ on track 143° to cross DEAKN at 11000, then on heading 098°. Expect RADAR vectors to final approach course.

LANDING RUNWAY 05R: From DEMNZ on track 158° to cross PDMNT at 11000, then on heading 080°. Expect RADAR vectors to final approach course.

LANDING RUNWAYS 14/32: From DEMNZ on track 094° to cross EARLL at 11000, then on heading 098°. Expect RADAR vectors to final approach course.

LANDING RUNWAYS 23L/R: From DEMNZ on track 096° to KVILL, then on track 055° to cross GLFRD at 11000, then on heading 060°. Expect RADAR vectors to final approach course.

LANDING INT: From TRAKS on track 107° to DEMNZ, then on track 143° to cross DEAKN at 11000, then on heading 098°. Expect RADAR vectors to final approach course.

SE-2, 17 JUN 2021 to 15 JUL 2021

SE-2, 17 JUN 2021 to 15 JUL 2021