

LOC I-WWA	APP CRS	Rwy Idg	<b>10201</b>
<b>110.15</b>	<b>303°</b>	TDZE	<b>1380</b>
		Apt Elev	<b>1384</b>

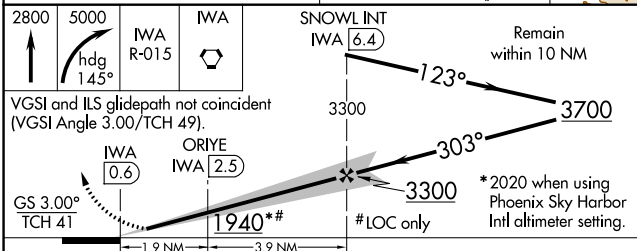
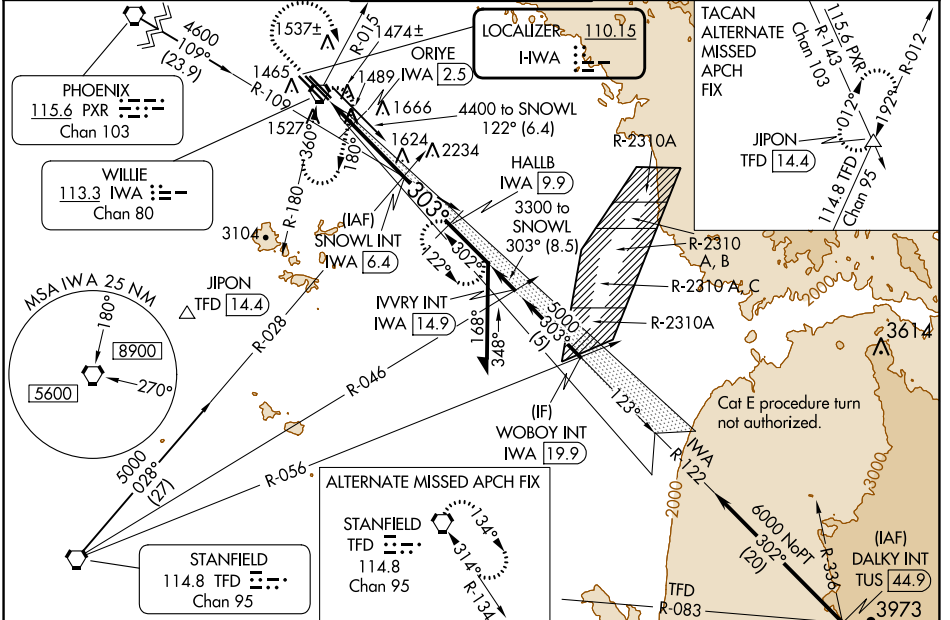
# ILS or LOC RWY 30C

PHOENIX-MESA GATEWAY (IWA)

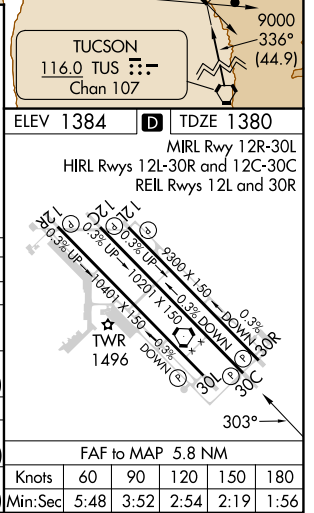
**⚠** When local altimeter setting not received, use Phoenix Sky Harbor Intl altimeter setting and increase S-ILS DA to 1660 feet and all MDA 80 feet, increase S-ILS 30C, S-LOC 30C all Cats and Circling Cats C/D/E visibility ¼ SM.

**MISSED APPROACH:** Climb to 2800 then climbing right turn to 5000 via heading 145° and IWA VORTAC R-015 to IWA VORTAC and hold, continue climb-in-hold to 5000 (TACAN aircraft continue via IWA VORTAC R-122 to HALLB/9.9 DME and hold, continue climb-in-hold to 5000, hold SE, LT, 302° inbound).

ATIS ★	PHOENIX APP CON	GATEWAY TOWER ★	GND CON	CLNC DEL
<b>133.5 270.275</b>	<b>124.9 353.8</b>	<b>120.6 (CTAF) 289.4</b>	<b>128.25 275.8</b>	<b>135.05</b>



CATEGORY	A	B	C	D	E
S-ILS 30C		1580-¾	200 (200-¾)		
S-LOC 30C	1940-1	560 (600-1)	1940-1½ 560 (600-1½)	1940-1¾ 560 (600-1¾)	1940-2 560 (600-2)
CIRCLING	1940-1	556 (600-1)	1940-1½ 556 (600-1½)	2000-2 616 (700-2)	2020-2¼ 636 (700-2¼)
ORIE FIX MINIMUMS					
S-LOC 30C	1800-1	420 (500-1)	1800-1¼ 420 (500-1¼)		1800-1½ 420 (500-1½)
CIRCLING	1880-1	496 (500-1)	1880-1½ 496 (500-1½)	2000-2 616 (700-2)	2020-2¼ 636 (700-2¼)



SW-4, 22 FEB 2024 to 21 MAR 2024

SW-4, 22 FEB 2024 to 21 MAR 2024

WAAS CH <b>58200</b> <b>W12A</b>	APP CRS <b>123°</b>	Rwy Idg <b>10201</b> TDZE <b>1359</b> Apt Elev <b>1384</b>
--	------------------------	--

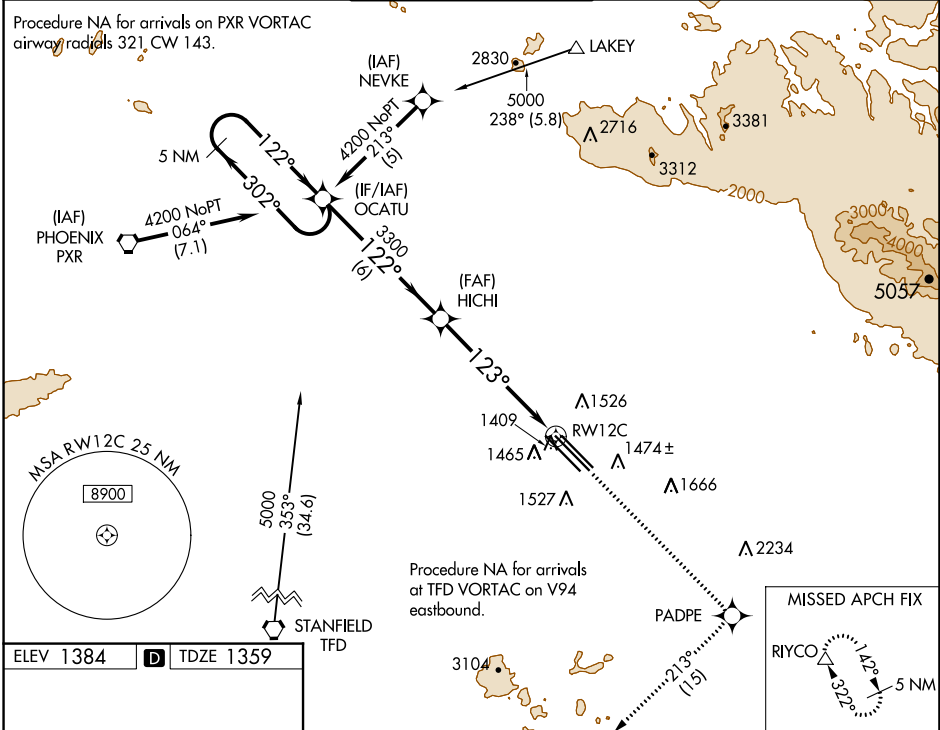
# RNAV (GPS) RWY 12C

PHOENIX-MESA GATEWAY (IWA)

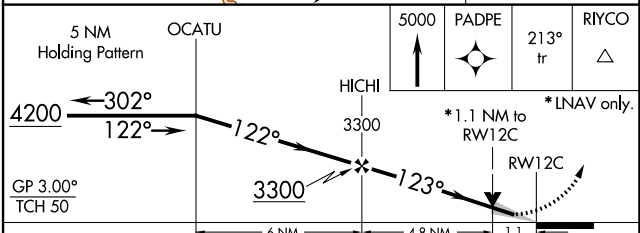
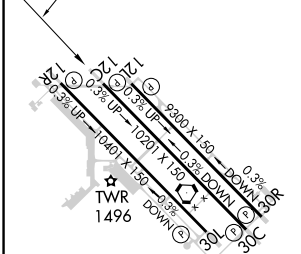
**⚠** DME/DME RNP-0.3 NA.  
**⚠** For uncompensated Baro-VNAV systems LNAV/VNAV NA below -17°C (2°F) or above 46°C (115°F).

MISSED APPROACH: Climb to 5000 direct PADPE and on 213° track to RIYCO and hold.

ATIS ★ <b>133.5 270.275</b>	PHOENIX APP CON <b>124.9 353.8</b>	GATEWAY TOWER ★ <b>120.6 (CTAF) 289.4</b>	GND CON <b>128.25 275.8</b>	CLNC DEL <b>135.05</b>
--------------------------------	---------------------------------------	--	--------------------------------	---------------------------



ELEV 1384	<b>D</b>	TDZE 1359
-----------	----------	-----------



CATEGORY	A	B	C	D	E
LPV DA	1609-1 250 (300-1)				
LNAV/VNAV DA	1686-1¼ 327 (400-1¼)				
LNAV MDA	1740-1 381 (400-1)		1740-1¼ 381 (400-1¼)		
CIRCLING	1840-1¼	456 (500-1¼)	1880-1½ 496 (500-1½)	2000-2 616 (700-2)	2020-2¼ 636 (700-2¼)

MIRL Rwy 12R-30L  
 HIRL Rwys 12L-30R and 12C-30C  
 REIL Rwys 12L and 30R

SW-4, 22 FEB 2024 to 21 MAR 2024

SW-4, 22 FEB 2024 to 21 MAR 2024

WAAS CH <b>50325</b> <b>W12B</b>	APP CRS <b>123°</b>	Rwy Idg <b>10401</b> TDZE <b>1349</b> Apt Elev <b>1384</b>
--	------------------------	--

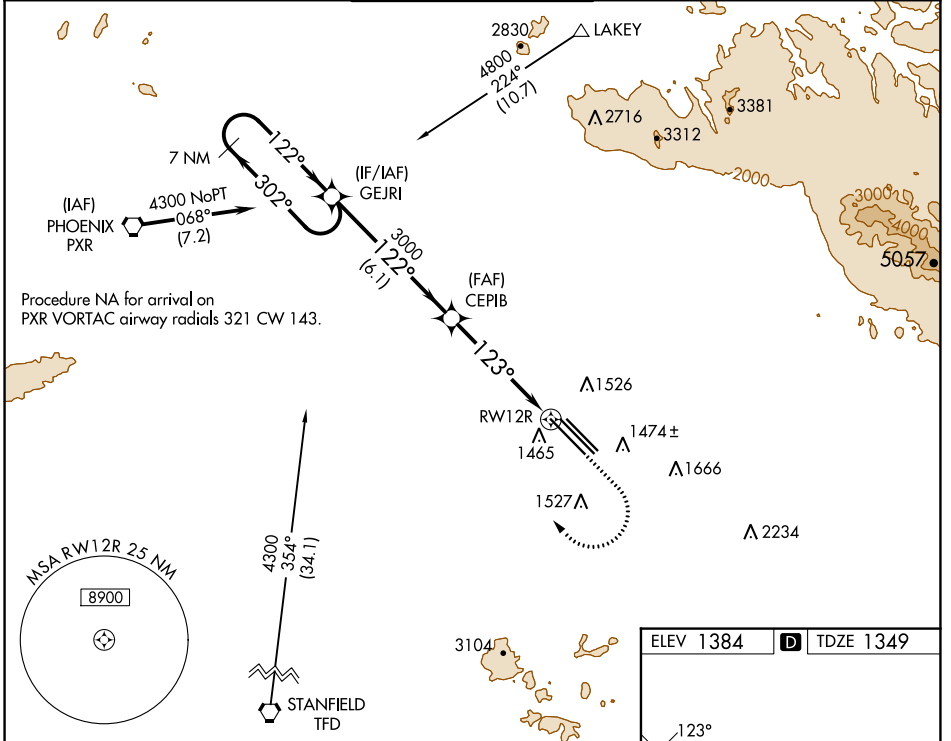
# RNAV (GPS) RWY 12R

PHOENIX-MESA GATEWAY (IWA)

**⚠** DME/DME RNP-0.3 NA. VDP NA with Phoenix Sky Harbor Intl altimeter setting. When local altimeter setting not received, use Phoenix Sky Harbor Intl altimeter setting and increase all MDA 80 feet; increase LP and LNAV Cats C/D and Circling Cat D visibility ¼ SM.

**MISSED APPROACH:** Climb to 1800 then climbing right turn to 4300 direct GEJRI and hold, continue climb-in-hold to 4300.

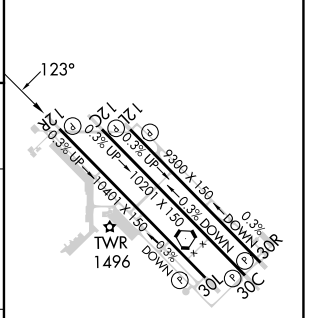
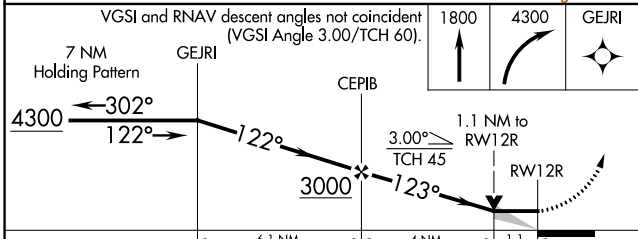
ATIS ★ <b>133.5 270.275</b>	PHOENIX APP CON <b>124.9 353.8</b>	GATEWAY TOWER ★ <b>120.6 (CTAF) 289.4</b>	GND CON <b>128.25 275.8</b>	CLNC DEL <b>135.05</b>
--------------------------------	---------------------------------------	--	--------------------------------	---------------------------



SW-4, 22 FEB 2024 to 21 MAR 2024

SW-4, 22 FEB 2024 to 21 MAR 2024

ELEV 1384	<b>D</b> TDZE 1349
-----------	--------------------



CATEGORY	A	B	C	D	E
LP MDA	1740-1 391 (400-1)		1740-1½ 391 (400-1½)		2300-3 951 (1000-3)
LNAV MDA	1740-1 391 (400-1)		1740-1½ 391 (400-1½)		2420-3 1071 (1100-3)
CIRCLING	1880-1 496 (500-1)		1880-1½ 496 (500-1½)	2000-2 616 (700-2)	2420-3 1036 (1100-3)

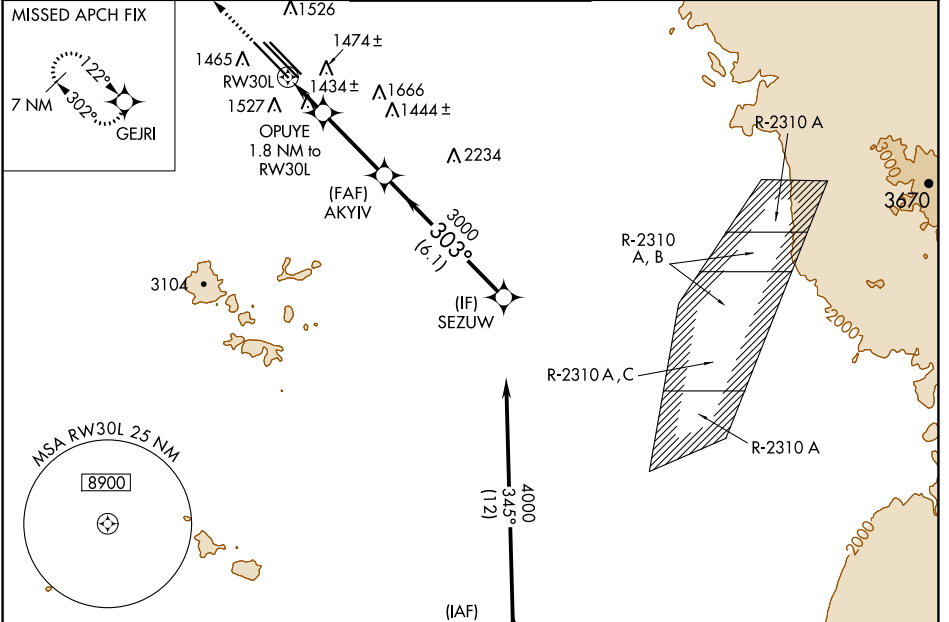
MIRL Rwy 12R-30L  
HIRL Rwy 12L-30R and 12C-30C  
REIL Rwy 12L and 30R

WAAS CH <b>93525</b> <b>W30B</b>	APP CRS <b>303°</b>	Rwy Idg <b>10401</b> TDZE <b>1374</b> Apt Elev <b>1384</b>
--	------------------------	--

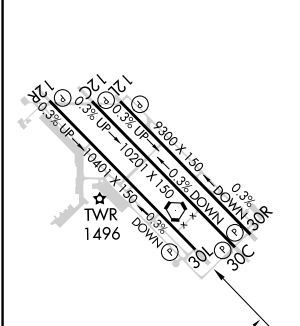
# RNAV (GPS) RWY 30L

PHOENIX-MESA GATEWAY (IWA)

<p><b>⚠</b> DME/DME RNP-0.3 NA. When local altimeter setting not received, use Phoenix Sky Harbor Intl altimeter setting and increase all MDA 80 feet; increase LP and LNAV Cat C, D and E visibility 1/8 SM and Circling Cats D, E visibility 1/4 SM. VDP NA with Phoenix Sky Harbor Intl altimeter setting.</p>		<p>MISSED APPROACH: Climb to 4300 direct GEJRI and hold.</p>		
<p>ATIS ★ <b>133.5 270.275</b></p>	<p>PHOENIX APP CON <b>124.9 353.8</b></p>	<p>GATEWAY TOWER ★ <b>120.6 (CTAF) 289.4</b></p>	<p>GND CON <b>128.25 275.8</b></p>	<p>CLNC DEL <b>135.05</b></p>



ELEV 1384	<b>D</b>	TDZE 1374
-----------	----------	-----------



CATEGORY	A	B	C	D	E
LP MDA	1800-1	426 (500-1)	1800-1½	426 (500-1½)	
LNAV MDA	1800-1	426 (500-1)	1800-1½	426 (500-1½)	
CIRCLING	1880-1	496 (500-1)	1880-1½ 496 (500-1½)	2000-2 616 (700-2)	2040-2½ 656 (700-2½)

SW-4, 22 FEB 2024 to 21 MAR 2024

SW-4, 22 FEB 2024 to 21 MAR 2024

WAAS CH <b>69343</b> <b>W30D</b>	APP CRS <b>303°</b>	Rwy ldg <b>9300</b> TDZE <b>1384</b> Apt Elev <b>1384</b>
--	------------------------	---

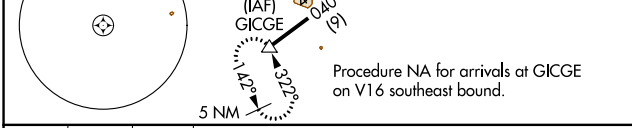
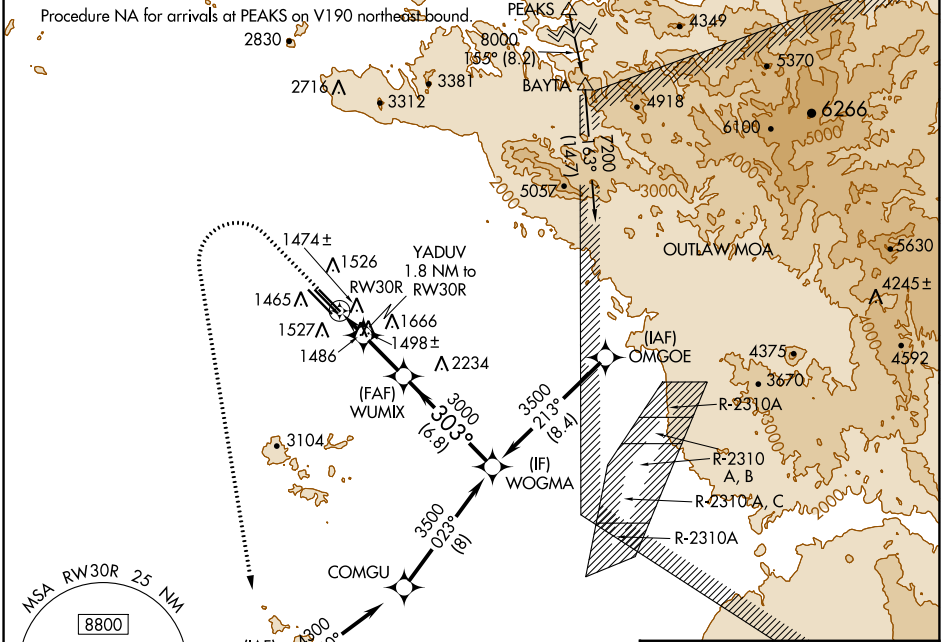
# RNAV (GPS) RWY 30R

PHOENIX-MESA GATEWAY (IWA)

RNP APCH-GPS.  
 For uncompensated Baro-VNAV systems, LNAV/VNAV NA below -17°C or above 54°C.

MISSED APPROACH: Climb to 2800 then climbing left turn to 5000 direct to GICGE and hold.

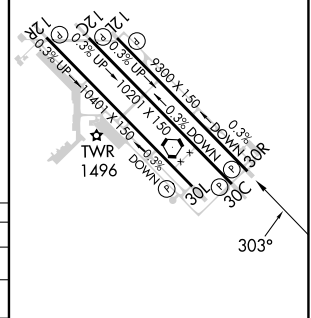
ATIS ★ <b>133.5 270.275</b>	PHOENIX APP CON <b>124.9 353.8</b>	GATEWAY TOWER ★ <b>120.6 (CTAF) 289.4</b>	GND CON <b>128.25 275.8</b>	CLNC DEL <b>135.05</b>
--------------------------------	---------------------------------------	--	--------------------------------	---------------------------



2800	5000	GICGE	VGS and RNAV glidepath not coincident (VGS Angle 3.00/TCH 75).	WOGMA
↑	↖	△		
*LNAV only	*0.9 NM to RWY 30R			
				GP 3.00° TCH 55

ELEV 1384	TDZE 1384
-----------	-----------

CATEGORY	A	B	C	D
LPV DA		1584-¾	200 (200-¾)	
LNAV/VNAV DA		1634-¾	250 (300-¾)	
LNAV MDA		1740-1	356 (400-1)	
<b>C</b> CIRCLING	1840-1	456 (500-1)	1880-1½	2000-2
			496 (500-1½)	616 (700-2)



MIRL Rwy 12R-30L  
 HIRL Rwy 12L-30R and 12C-30C  
 REIL Rwy 12L and 30R

SW-4, 22 FEB 2024 to 21 MAR 2024

SW-4, 22 FEB 2024 to 21 MAR 2024

APP CRS	Rwy Idg	<b>10201</b>
<b>303°</b>	TDZE	<b>1380</b>
	Apt Elev	<b>1384</b>

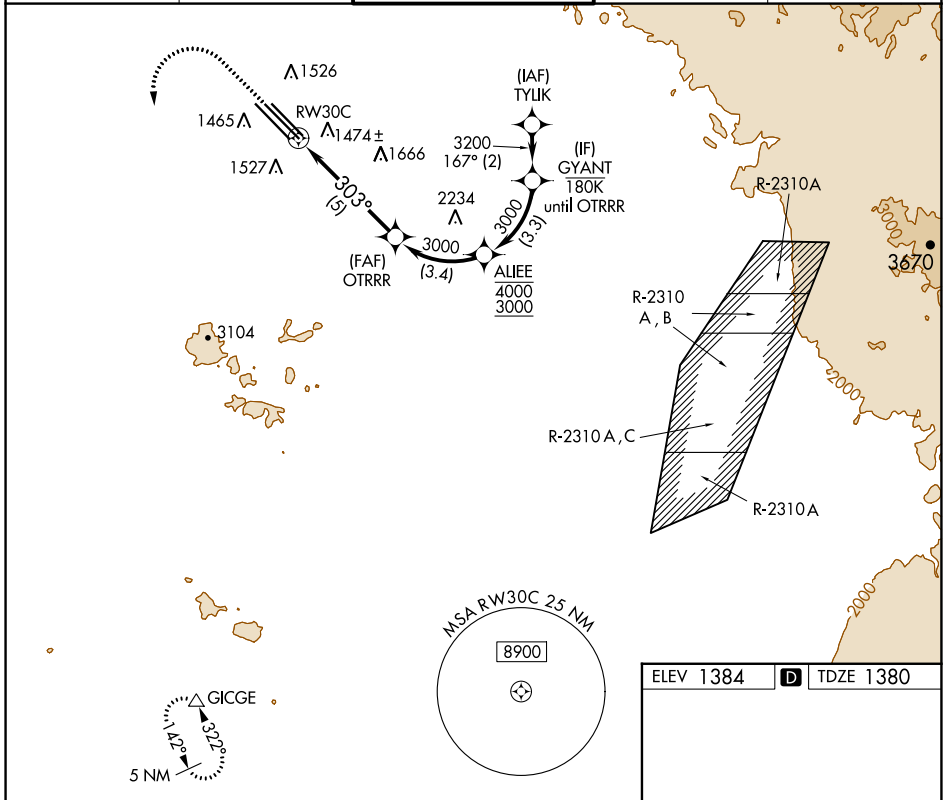
# RNAV (RNP) Z RWY 30C

PHOENIX-MESA GATEWAY (IWA)

**▼** For uncompensated Baro-VNAV systems, procedure NA below -17°C (2°F) or above 54°C (130°F). GPS and RF required.

MISSED APPROACH: Climb to 2800 then climbing left turn to 5000 direct GICGE and hold.

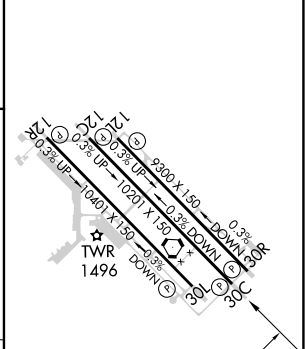
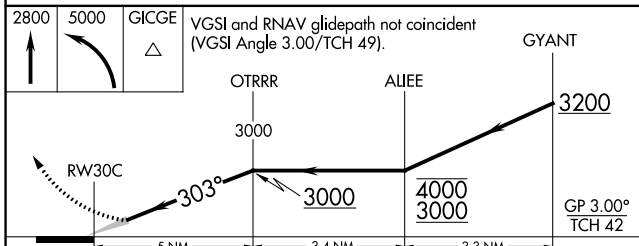
ATIS ★ <b>133.5 270.275</b>	PHOENIX APP CON <b>124.9 353.8</b>	GATEWAY TOWER ★ <b>120.6 (CTAF) 289.4</b>	GND CON <b>128.25 275.8</b>	CLNC DEL <b>135.05</b>
--------------------------------	---------------------------------------	--	--------------------------------	---------------------------



SW-4, 22 FEB 2024 to 21 MAR 2024

SW-4, 22 FEB 2024 to 21 MAR 2024

ELEV 1384	<b>D</b> TDZE 1380
-----------	--------------------



CATEGORY	A	B	C	D
RNP 0.21 DA		1637-7/8	257 (300-7/8)	
RNP 0.30 DA		1711-1 1/8	331 (400-1 1/8)	

**AUTHORIZATION REQUIRED**

MIRL Rwy 12R-30L  
HIRL Rwys 12L-30R and 12C-30C  
REIL Rwys 12L and 30R

WAAS CH <b>62911</b> <b>W30A</b>	APP CRS <b>303°</b>	Rwy Idg <b>10201</b> TDZE <b>1380</b> Apt Elev <b>1384</b>
--	------------------------	--

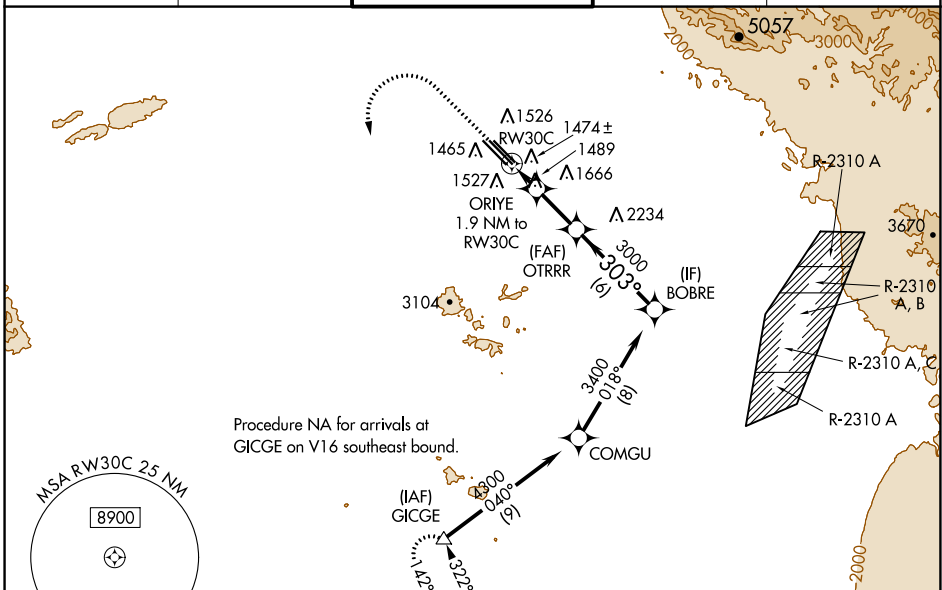
# RNAV (GPS) Y RWY 30C

PHOENIX-MESA GATEWAY (IWA)

**⚠** For uncompensated Baro-VNAV systems, LNAV/VNAV NA below -2°C (29°F) or above 35°C (95°F). DME/DME RNP-0.3 NA. When local altimeter setting not received, use Phoenix Sky Harbor Intl altimeter setting and increase LPV DA to 1660 feet, LNAV/VNAV DA to 1710 feet and all MDA 80 feet; increase LPV all Cats visibility 1/8 SM, increase LNAV/VNAV all Cats, LNAV Cats C, D and E, and Circling Cats D, E visibility 1/4 SM. VDP and Baro-VNAV NA with Phoenix Sky Harbor Intl altimeter setting.

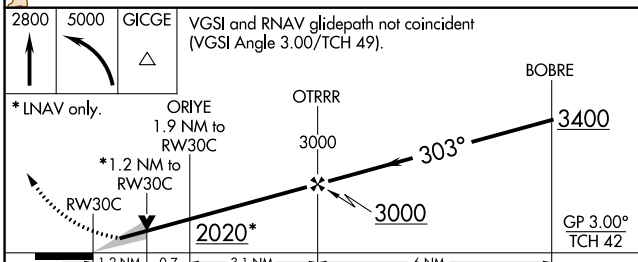
**MISSED APPROACH:**  
Climb to 2800 then climbing left turn to 5000 direct GICGE and hold.

ATIS * <b>133.5 270.275</b>	PHOENIX APP CON <b>124.9 353.8</b>	GATEWAY TOWER * <b>120.6 (CTAF) 289.4</b>	GND CON <b>128.25 275.8</b>	CLNC DEL <b>135.05</b>
--------------------------------	---------------------------------------	--	--------------------------------	---------------------------

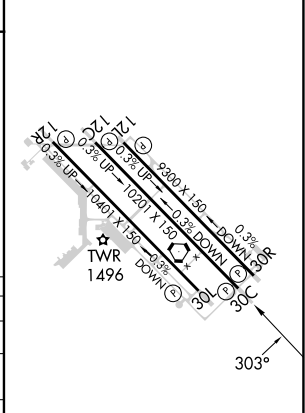


Procedure NA for arrivals at GICGE on V16 southeast bound.

ELEV 1384	<b>D</b> TDZE 1380
-----------	--------------------



CATEGORY	A	B	C	D	E
LPV DA		1580-3/4	200 (200-3/4)		
LNAV/VNAV DA		1630-7/8	250 (300-7/8)		
LNAV MDA	1800-1	420 (500-1)	1800-1 1/8	420 (500-1 1/8)	
CIRCLING	1880-1	496 (500-1)	1880-1 1/2	2000-2	2040-2 1/4
			496 (500-1 1/2)	616 (700-2)	656 (700-2 1/4)



MIRL Rwy 12R-30L  
HIRL Rwys 12L-30R and 12C-30C  
REIL Rwys 12L and 30R

SW-4, 22 FEB 2024 to 21 MAR 2024

SW-4, 22 FEB 2024 to 21 MAR 2024

VORTAC IWA <b>113.3</b> Chan 80	APP CRS <b>302°</b>	Rwy Idg	30C	30R
		TDZE	10201	9301
		1380	1382	
		Apt Elev	1384	1384

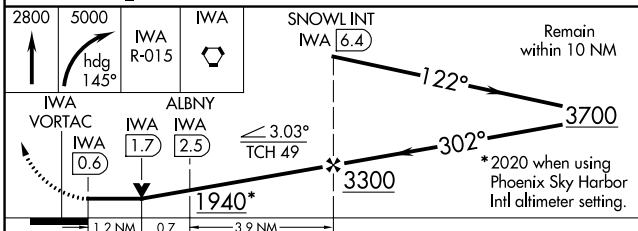
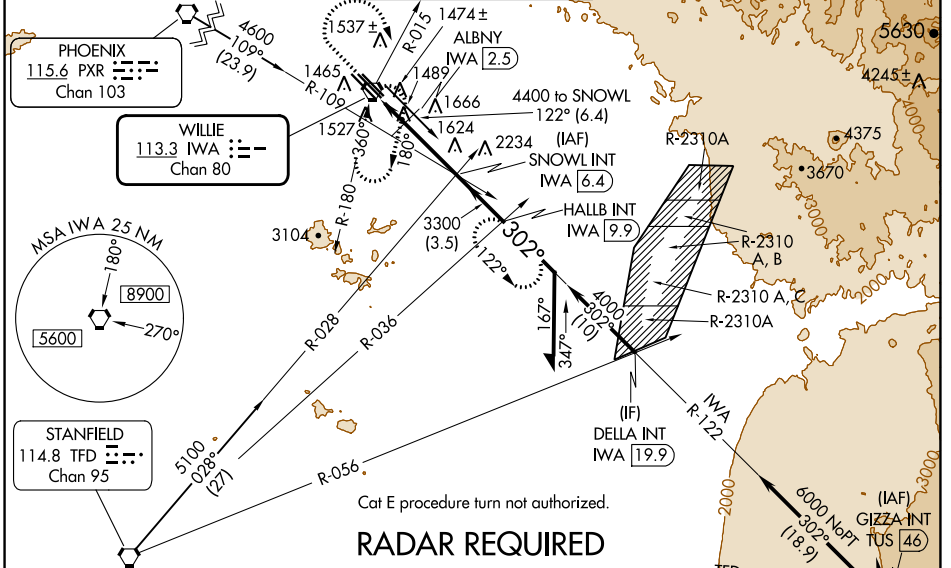
# VOR or TACAN RWY 30C

PHOENIX-MESA GATEWAY (IWA)

**⚠** When local altimeter setting not received, use Phoenix Sky Harbor Intl altimeter setting and increase all MDA 80 feet, increase S-30C, SIDESTEP 30R, and Circling Cats C/D/E visibility ¼ SM.

**MISSED APPROACH:** Climb to 2800 then climbing right turn to 5000 via heading 145° and IWA VORTAC R-015 to IWA VORTAC and hold, continue climb-in-hold to 5000 (TACAN aircraft continue via IWA VORTAC R-122 to HALLB INT/IWA 9.9 DME and hold, continue climb-in-hold to 5000, hold SE, LT, 302° inbound).

ATIS ★ <b>133.5 270.275</b>	PHOENIX APP CON <b>124.9 353.8</b>	GATEWAY TOWER ★ <b>120.6 (CTAF) 289.4</b>	GND CON <b>128.25 275.8</b>	CLNC DEL <b>135.05</b>
--------------------------------	---------------------------------------	--	--------------------------------	---------------------------



CATEGORY	A		C	D	E
	1	2			
S-30C	1940-1	560 (600-1)	1940-1½ 560 (600-1½)	1940-1¾ 560 (600-1¾)	1940-2 560 (600-2)
SIDESTEP 30R	1940-1	558 (600-1)	1940-1½ 558 (600-1½)	1940-2	558 (600-2)
CIRCLING	1940-1	556 (600-1)	1940-1½ 556 (600-1½)	2000-2 616 (700-2)	2020-2¼ 636 (700-2¼)
DME MINIMUMS					
S-30C	1800-1	420 (500-1)	1800-1¼ 420 (500-1¼)	1800-1½ 420 (500-1½)	
SIDESTEP 30R	1800-1	418 (500-1)	1800-1½ 418 (500-1½)	1800-2 418 (500-2)	
CIRCLING	1880-1	496 (500-1)	1880-1½ 496 (500-1½)	2000-2 616 (700-2)	2020-2¼ 636 (700-2¼)

ELEV 1384	TDZE 30C 1380
	TDZE 30R 1382
HIRL Rwy 12L-30R and 12C-30C	
REIL Rwy 12L and 30R	
MIRL Rwy 12R-30L	
FAF to MAP 5.8 NM	
Knots	60 90 120 150 180
Min:Sec	5:48 3:52 2:54 2:19 1:56

SW-4, 22 FEB 2024 to 21 MAR 2024

SW-4, 22 FEB 2024 to 21 MAR 2024