

LOC I-JAN 110.5	APP CRS 159°	Rwy Idg TDZE Apt Elev	8500 312 346
---------------------------	------------------------	-----------------------------	---

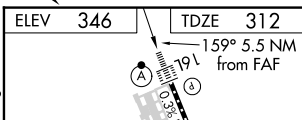
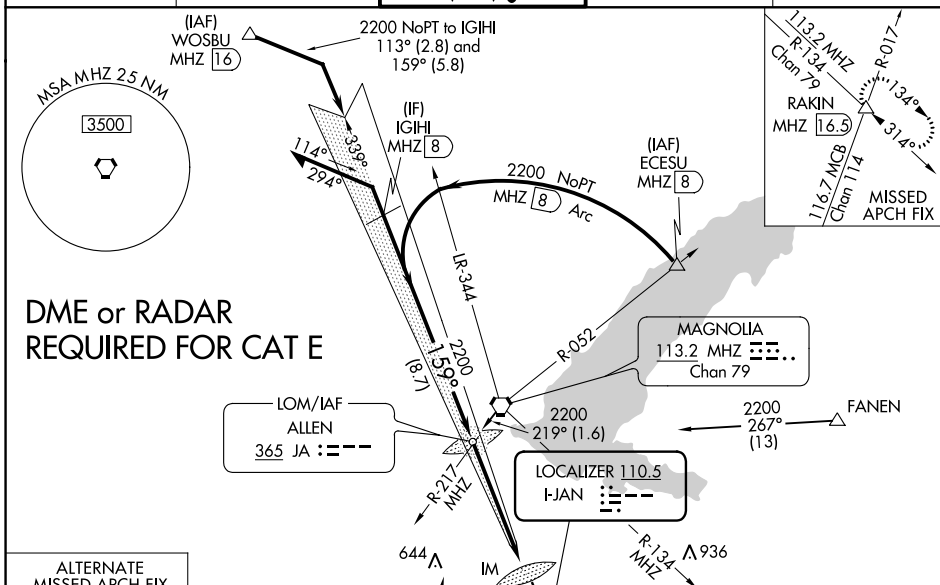
ILS or LOC RWY 16L

JACKSON-MEDGAR WILEY EVERS INTL (JAN)

ASR Circling NA for Cat E southwest of Rwy 16R-34L. When local altimeter setting not received, use Hawkins Fld altimeter setting and increase all DA 19 feet and all MDA 20 feet. For inop ALS, increase S-ILS 16L Cat E visibility to RVR 4000 and increase S-LOC 16L Cats C/D/E visibility to 1 3/8 SM. For inop ALS when using Hawkins Fld altimeter setting, increase S-ILS 16L Cat E visibility to RVR 4000 and increase S-LOC 16L Cats C/D/E visibility to 1 1/2 SM. Procedure turn NA for Cat E.

ALS-F-2 MISSED APPROACH: Climb to 800 then climbing left turn to 3000 on heading 090° and MHZ VORTAC R-134 to RAKIN INT/16.5 DME and hold.

ATIS 121.05	JACKSON APP CON * 123.9 317.7	JACKSON TOWER * 120.9 (CTAF) 352.0	GND CON 121.7 348.6	UNICOM 122.95
-----------------------	---	--	-------------------------------	-------------------------



	800	3000	MHZ	RAKIN
	JA	hdg	R-134	△
	LOM	090°		

CATEGORY	A	B	C	D	E	FAF to MAP 5.5 NM					
S-ILS 16L	512/18 200 (200-1/2)					Knots	60	90	120	150	180
S-LOC 16L	820/24	508 (500-1/2)	820/55		508 (500-1)	Min:Sec	5:30	3:40	2:45	2:12	1:50
CIRCLING	880-1	900-1	900-1 1/2	960-2	1040-2 1/2						
	534 (600-1)	554 (600-1)	554 (600-1 1/2)	614 (700-2)	694 (700-2 1/2)						

SC-4, 22 FEB 2024 to 21 MAR 2024

SC-4, 22 FEB 2024 to 21 MAR 2024

LOC I-FRL 109.3	APP CRS 339°	Rwy Idg TDZE Apt Elev	8500 329 346
---------------------------	------------------------	-----------------------------	---

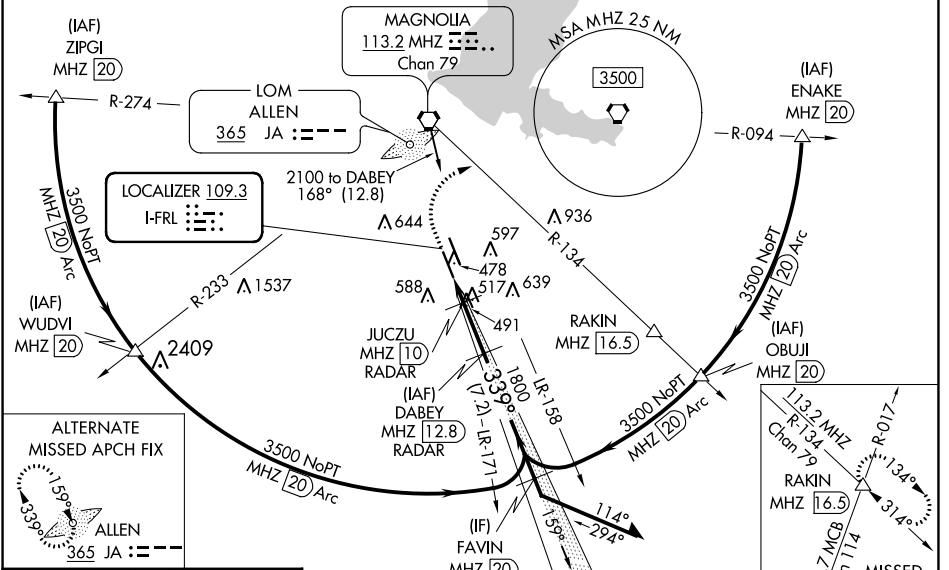
ILS or LOC RWY 34L

JACKSON-MEDGAR WILEY EVERS INTL (JAN)

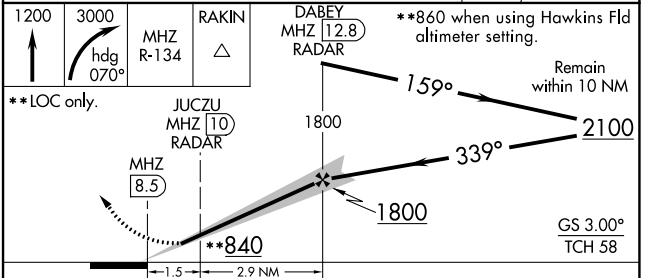
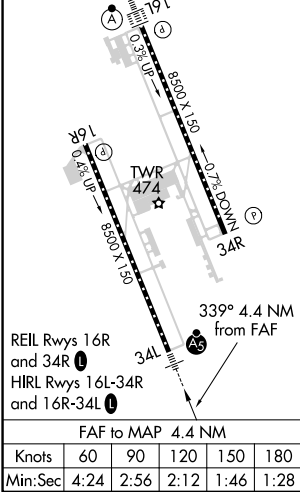
⚠ Circling NA for Cat E southwest of Rwy 16R-34L. DME or RADAR required. When local altimeter setting not received, use Hawkins Fld altimeter setting and increase all DA 19 feet and all MDA 20 feet; increase S-ILS 34L visibility to RVR 4000. For inop ALS, increase S-ILS 34L Cat E visibility to RVR 4000 and S-LOC 34L all Cats visibility to 1 3/8 SM. For inop ALS when using Hawkins Fld altimeter setting, increase S-LOC 34L Cat E visibility to 1 1/2 SM. Inop table does not apply to S-ILS 34L when using Hawkins Fld altimeter setting. Rwy 34L helicopter visibility reduction below RVR 4000 NA. Procedure turn NA for Cat E. #DME from MHz VORTAC.

MALS MISSED APPROACH: Climb to 1200 then climbing right turn to 3000 on heading 070° and MHz VORTAC R-134 to RAKIN INT/MHz 16.5 DME and hold.

ATIS 121.05	JACKSON APP CON* 123.9 317.7	JACKSON TOWER* 120.9 (CTAF) 0 352.0	GND CON 121.7 348.6	UNICOM 122.95
-----------------------	--	---	-------------------------------	-------------------------



ELEV 346	TDZE 329
----------	----------



CATEGORY	A	B	C	D	E
S-ILS 34L	529/18 200 (200-1/2)				
S-LOC 34L	840/40	511 (500-3/4)	840/55		511 (500-1)
CIRCLING	880-1	900-1	900-1 1/2	960-2	1040-2 1/2
	534 (600-1)	554 (600-1)	554 (600-1 1/2)	614 (700-2)	694 (700-2 1/2)
JUCZU DME MINIMUMS #					
S-LOC 34L	760/40 431 (500-3/4)				
CIRCLING	880-1	900-1	900-1 1/2	960-2	1040-2 1/2
	534 (600-1)	554 (600-1)	554 (600-1 1/2)	614 (700-2)	694 (700-2 1/2)

SC-4, 22 FEB 2024 to 21 MAR 2024

SC-4, 22 FEB 2024 to 21 MAR 2024

WAAS CH 72911 W16A	APP CRS 159°	Rwy Idg 8500 TDZE 312 Apt Elev 346
--	------------------------	---

RNAV (GPS) RWY 16L

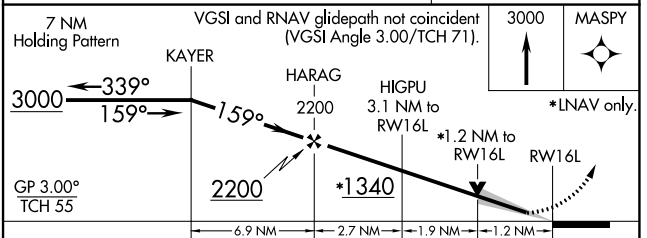
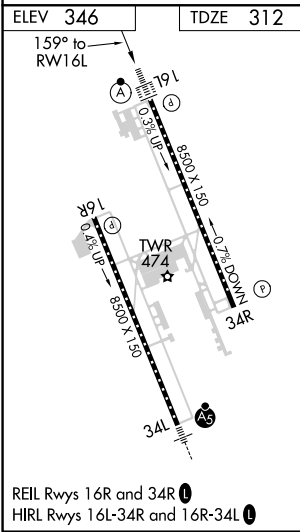
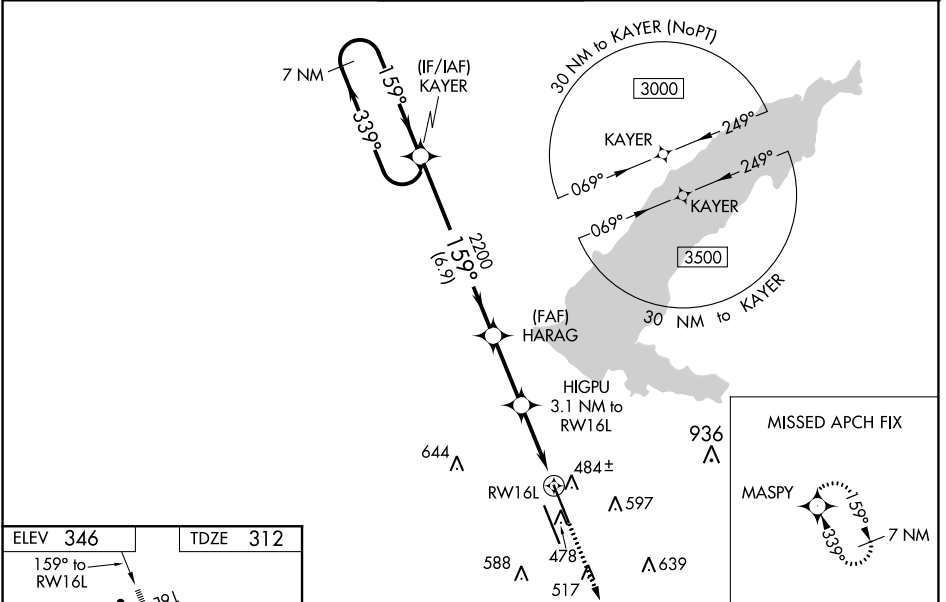
JACKSON-MEDGAR WILEY EVERS INTL (JAN)

RNP APCH.

▼ For uncompensated Baro-VNAV systems, LNAV/VNAV NA below -7°C or above 54°C.
 ▲ Circling NA for Cat E southwest of Rwy 16R-34L. When local altimeter setting not received, use Hawkins Fld altimeter setting and increase all DA 19 feet and all MDA 20 feet, increase ASR LNAV/VNAV all Cats visibility to RVR 3400 and LNAV Cats C/D/E visibility to RVR 5000. VDP and Baro-VNAV NA when using Hawkins Fld altimeter setting. For inop ALS, increase LPV Cat E visibility to RVR 4000, LNAV/VNAV Cat E visibility to RVR 5500, and LNAV Cat E visibility to 1 3/8 SM. For inop ALS when using Hawkins Fld altimeter setting, increase LPV Cat E visibility to RVR 4000, LNAV/VNAV Cat E visibility to RVR 6000, and LNAV Cat E visibility to 1 3/8 SM.

ALSF-2 MISSED APPROACH: Climb to 3000 direct MASP and hold.

ATIS 121.05	JACKSON APP CON * 123.9 317.7	JACKSON TOWER * 120.9 (CTAF) 352.0	GND CON 121.7 348.6	UNICOM 122.95
-----------------------	---	--	-------------------------------	-------------------------



CATEGORY	A	B	C	D	E
LPV DA	512/18 200 (200-1/2)				
LNAV/VNAV DA	652/31 340 (400-5/8)				
LNAV MDA	760/24 448 (500-1/2)		760/45 448 (500-7/8)		
CIRCLING	880-1	900-1	900-1 1/2	960-2	1040-2 1/2
	534 (600-1)	554 (600-1)	554 (600-1 1/2)	614 (700-2)	694 (700-2 1/2)

SC-4, 22 FEB 2024 to 21 MAR 2024

SC-4, 22 FEB 2024 to 21 MAR 2024

WAAS CH 49211 W16B	APP CRS 159°	Rwy Idg 8500 TDZE 320 Apt Elev 346
--	------------------------	---

RNAV (GPS) RWY 16R

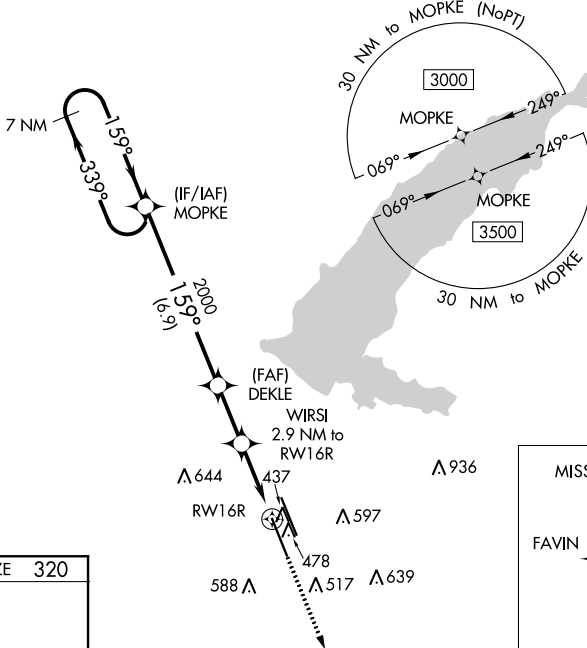
JACKSON-MEDGAR WILEY EVERS INTL (JAN)

RNP APCH.

▽ For uncompensated Baro-VNAV systems, LNAV/VNAV NA below -7°C or above 54°C. Circling NA for Cat E southwest of Rwy 16R-34L. When local altimeter setting not received, use Hawkins Fld altimeter setting and increase all DA 19 feet and all MDA 20 feet, increase LNAV/VNAV all Cats and LNAV Cat C/D/E visibility 1/8 SM. Rwy 16R helicopter visibility reduction below 3/4 SM NA. VDP and Baro-VNAV NA when using Hawkins Fld altimeter setting.

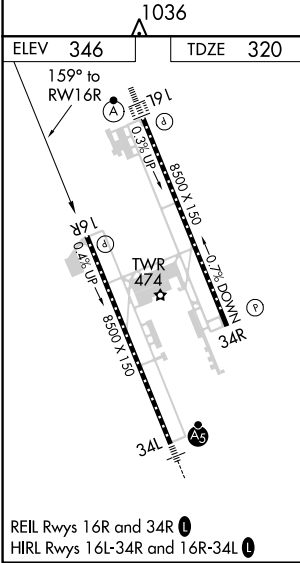
MISSED APPROACH:
Climb to 3000 direct FAVIN and hold.

ATIS 121.05	JACKSON APP CON* 123.9 317.7	JACKSON TOWER* 120.9 (CTAF) 352.0	GND CON 121.7 348.6	UNICOM 122.95
-----------------------	--	---	-------------------------------	-------------------------



SC-4, 22 FEB 2024 to 21 MAR 2024

SC-4, 22 FEB 2024 to 21 MAR 2024



7 NM Holding Pattern MOPKE	3000	339°	159°	159°	2000	1280	3000	FAVIN
GP 3.00° TCH 55		6.9 NM		2.3 NM		1.8 NM		1.1 NM
CATEGORY	A	B	C	D	E			
LPV DA	621-1		301 (300-1)					
LNAV/VNAV DA	638-1		318 (300-1)					
LNAV MDA	720-1 400 (400-1)		720-1 1/8 400 (400-1 1/8)					
CIRCLING	880-1	900-1	900-1 1/2	960-2	1040-2 1/2			
	534 (600-1)	554 (600-1)	554 (600-1 1/2)	614 (700-2)	694 (700-2 1/2)			

WAAS CH 61301 W34A	APP CRS 339°	Rwy Idg 8500 TDZE 329 Apt Elev 346
--	------------------------	---

RNAV (GPS) RWY 34L

JACKSON-MEDGAR WILEY EVERS INTL (JAN)

RNP APCH.

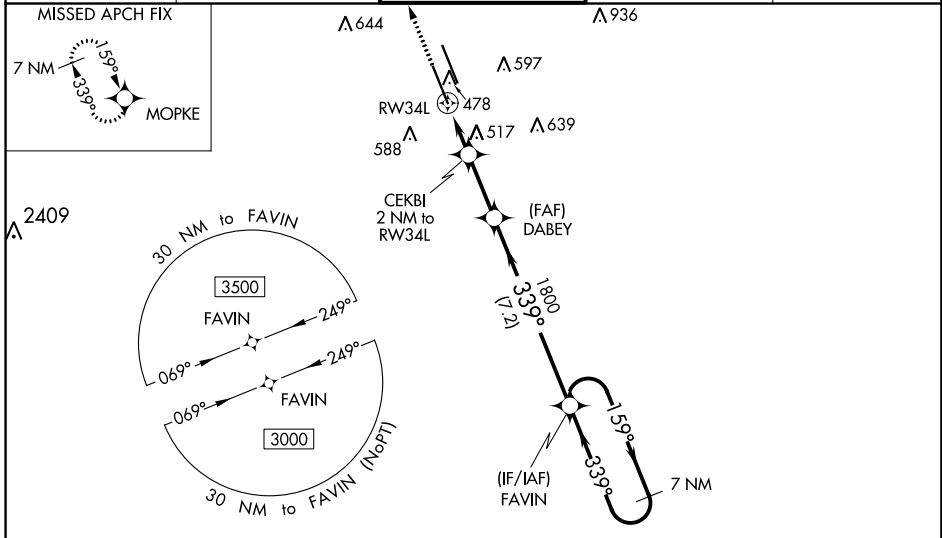
⚠ For uncompensated Baro-VNAV systems, LNAV/VNAV NA below -7°C or above 54°C.
⚠ Circling NA for Cat E southwest of Rwy 16R-34L. VDP and Baro-VNAV NA when using Hawkins Fld altimeter setting. When local altimeter setting not received, use Hawkins Fld altimeter setting and increase all DA 19 feet and all MDA 20 feet, increase LNAV/VNAV all Cats visibility to 1½ SM and LNAV Cats C/D/E visibility to RVR 5000. For inop ALS, increase LNAV/VNAV Cat E visibility to 1½ SM and LNAV Cat E visibility to 1¾ SM. For inop ALS when using Hawkins Fld altimeter setting, increase LPV Cat E visibility to RVR 4500, LNAV/VNAV Cat E visibility to 1½ SM, and LNAV Cat E visibility to 1¾ SM. Inop table does not apply to LPV. Rwy 34L helicopter visibility reduction below RVR 4000 NA.

MALSR

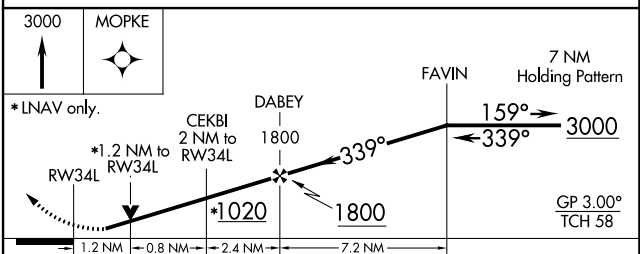
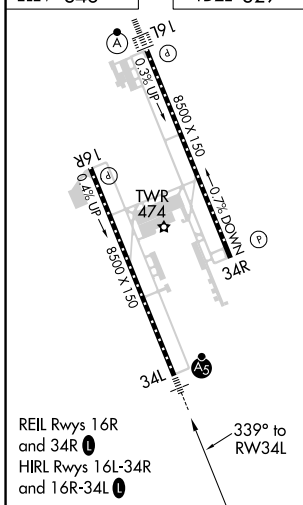


MISSED APPROACH:
Climb to 3000 direct MOPKE and hold.

ATIS 121.05	JACKSON APP CON ★ 123.9 317.7	JACKSON TOWER ★ 120.9 (CTAF) 352.0	GND CON 121.7 348.6	UNICOM 122.95
-----------------------	---	--	-------------------------------	-------------------------



ELEV 346	TDZE 329
-----------------	-----------------



CATEGORY	A	B	C	D	E
LPV DA	579/40 250 (300-¾)				
LNAV/VNAV DA	875-1¾ 546 (600-1¾)				
LNAV MDA	780/40 451 (500-¾)	780/45 451 (500-¾)			
C CIRCLING	880-1 534 (600-1)	900-1 554 (600-1)	900-1½ 554 (600-½)	960-2 614 (700-2)	1040-2½ 694 (700-2½)

SC-4, 22 FEB 2024 to 21 MAR 2024

SC-4, 22 FEB 2024 to 21 MAR 2024

WAAS CH 45811 W34B	APP CRS 339°	Rwy Idg 8500 TDZE 346 Apt Elev 346
--	------------------------	---

RNAV (GPS) RWY 34R

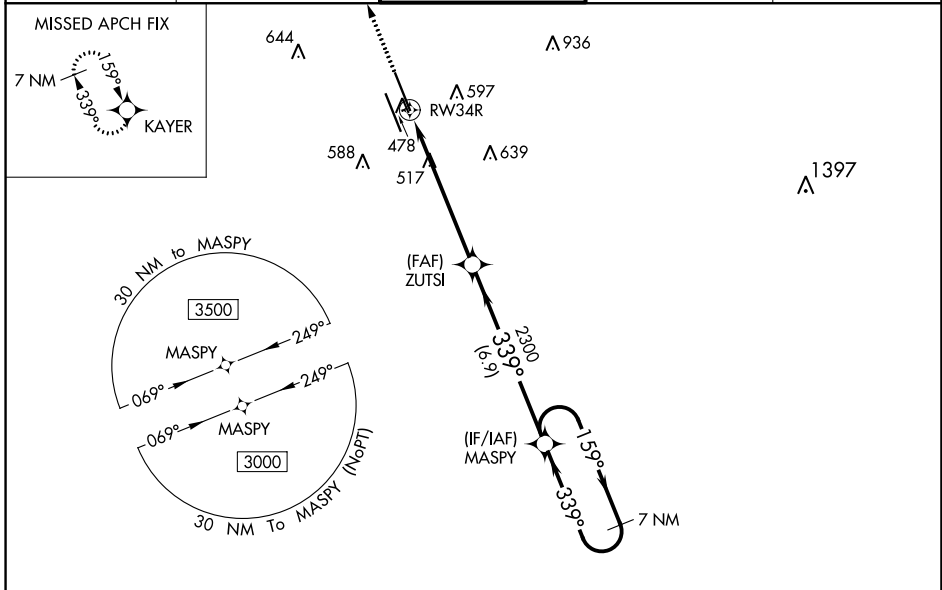
JACKSON-MEDGAR WILEY EVERS INTL (JAN)

RNP APCH.

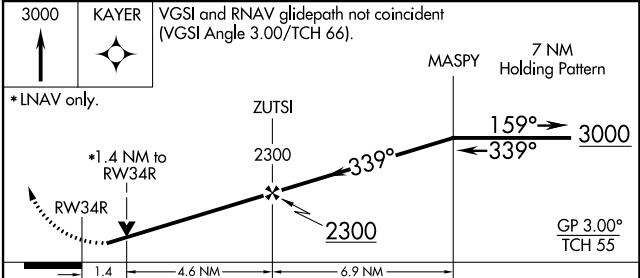
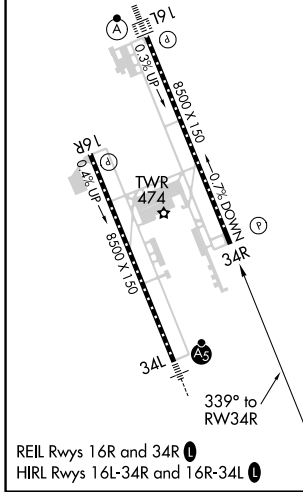
▼ For uncompensated Baro-VNAV systems, LNAV/VNAV NA below -7°C or above 54°C. Circling NA for Cat E southwest of Rwy 16R-34L. When local altimeter setting not received, use Hawkins Fld altimeter setting and increase all DA 19 feet and all MDA 20 feet, increase LPV all Cats visibility to RVR 5100, LNAV/VNAV all Cats visibility to 1¼ SM and LNAV Cats C/D/E visibility to 1½ SM. VDP and Baro-VNAV NA when using Hawkins Fld altimeter setting. Helicopter visibility reduction below ¾ SM NA.

▲ MISSED APPROACH: Climb to 3000 direct KAYER and hold.

ATIS 121.05	JACKSON APP CON * 123.9 317.7	JACKSON TOWER * 120.9 (CTAF) 352.0	GND CON 121.7 348.6	UNICOM 122.95
-----------------------	---	--	-------------------------------	-------------------------



ELEV 346	TDZE 346
-----------------	-----------------



CATEGORY	A	B	C	D	E
LPV DA	646/47 300 (300-1)				
LNAV/VNAV DA	846-1½ 500 (500-1½)				
LNAV MDA	860/55	514 (600-1)	860-1¾	514 (600-1¾)	
CIRCLING	880-1	900-1	900-1½	960-2	1040-2½
	534 (600-1)	554 (600-1)	554 (600-1½)	614 (700-2)	694 (700-2½)

MHZ VORTAC 113.2 Chan 79	APP CRS 171°	Rwy ldg 8500 TDZE 312 Apt Elev 346
--	------------------------	---

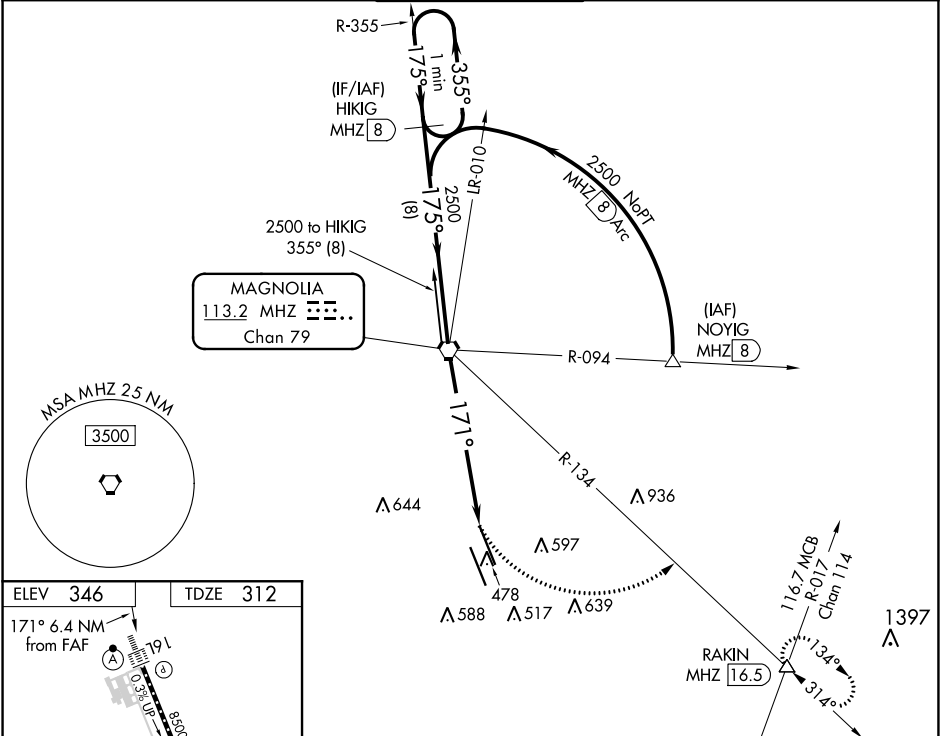
VOR/DME or TACAN RWY 16L

JACKSON-MEDGAR WILEY EVERS INTL (JAN)

VDP NA with Hawkins Fld altimeter setting. When local altimeter setting not received, use Hawkins Fld altimeter setting and increase all MDA 20 feet; increase S-16L Cats C/D/E visibility to 1¼ mile. For inop ALSF, increase S-16L Cats A/B visibility to 1 mile; Cat E to 1½. For inop ALSF when using Hawkins Fld altimeter setting, increase S-16L Cats A/B visibility to 1 mile, and Cats C/D/E visibility to 1½. Circling NA for Cat E southwest of Rwy 16R-34L. Helicopter visibility reduction below ¾ SM NA.

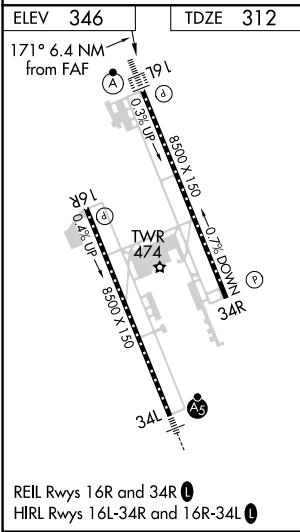
ALSF-2
MISSED APPROACH: Climbing left turn to 3000 on heading 103° and MHZ VORTAC R-134 to RAKIN INT/ MHZ 16.5 DME and hold.

ATIS 121.05	JACKSON APP CON * 123.9 317.7	JACKSON TOWER * 120.9 (CTAF) 352.0	GND CON 121.7 348.6	UNICOM 122.95
-----------------------	---	--	-------------------------------	-------------------------



SC-4, 22 FEB 2024 to 21 MAR 2024

SC-4, 22 FEB 2024 to 21 MAR 2024



One Minute Holding Pattern	HIKIG MHZ 8	MHZ VORTAC	3000 hdg 103°	RAKIN MHZ R-134	
2500	175°	2500	171°	MHZ 4.9	
355°	175°	171°	3.11° TCH 71	MHZ 6.4	
8 NM		4.9 NM		1.5	
CATEGORY	A	B	C	D	E
S-16L	860/40	548 (600-¾)	860/60	548 (600-1¼)	
CIRCLING	880-1 534 (600-1)	900-1 554 (600-1)	900-1½ 554 (600-1½)	960-2 614 (700-2)	1040-2½ 694 (700-2½)

MHZ VORTAC 113.2 Chan 79	APP CRS 175°	Rwy ldg 8500 TDZE 320 Apt Elev 346
--	------------------------	---

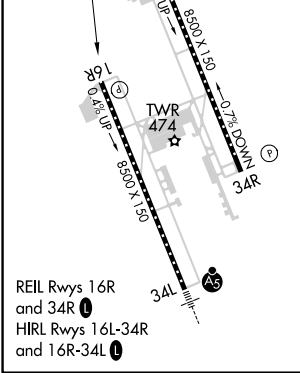
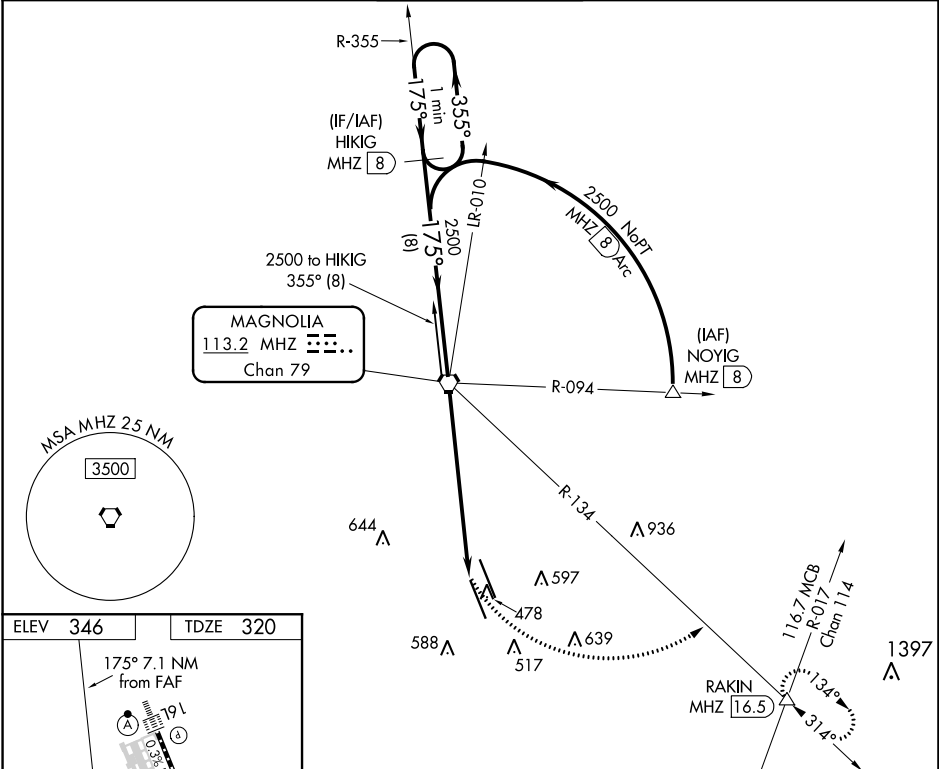
VOR/DME or TACAN RWY 16R

JACKSON-MEDGAR WILEY EVERS INTL (JAN)

⚠ VDP NA with Hawkins fld altimeter setting. When local altimeter setting not received, use Hawkins fld altimeter setting and increase all MDA 20 feet; increase S-16R Cats C/D/E visibility 1/8 mile. Circling NA for Cat E SW of Rwy 16R-34L. Helicopter visibility reduction below 3/4 SM NA.

MISSED APPROACH: Climbing left turn to 3000 on heading 103° and MHZ VORTAC R-134 to RAKIN INT/ MHZ 16.5 DME and hold.

ATIS 121.05	JACKSON APP CON* 123.9 317.7	JACKSON TOWER* 120.9 (CTAF) 352.0	GND CON 121.7 348.6	UNICOM 122.95
-----------------------	--	---	-------------------------------	-------------------------



One Minute Holding Pattern	VGSI and descent angles not coincident (VGSI Angle 3.00/TCH 80).		3000	RAKIN MHZ R-134 △	
			hdg 103°		
2500 ← 355° → 175° → 2500		MHZ VORTAC			
		MHZ 5.6		MHZ 7.1	
		2.83° TCH 55			
		8 NM		5.5 NM	
				1.6	
CATEGORY	A	B	C	D	E
S-16R	880-1	560 (600-1)	880-1 1/2	560 (600-1 1/2)	
C CIRCLING	880-1 534 (600-1)	900-1 554 (600-1)	900-1 1/2 554 (600-1 1/2)	960-2 614 (700-2)	1040-2 1/2 694 (700-2 1/2)

SC-4, 22 FEB 2024 to 21 MAR 2024

SC-4, 22 FEB 2024 to 21 MAR 2024

VORTAC MHZ 113.2 Chan 79	APP CRS 352°	Rwy Idg TDZE 329 Apt Elev 346	8500
--	------------------------	---	-------------

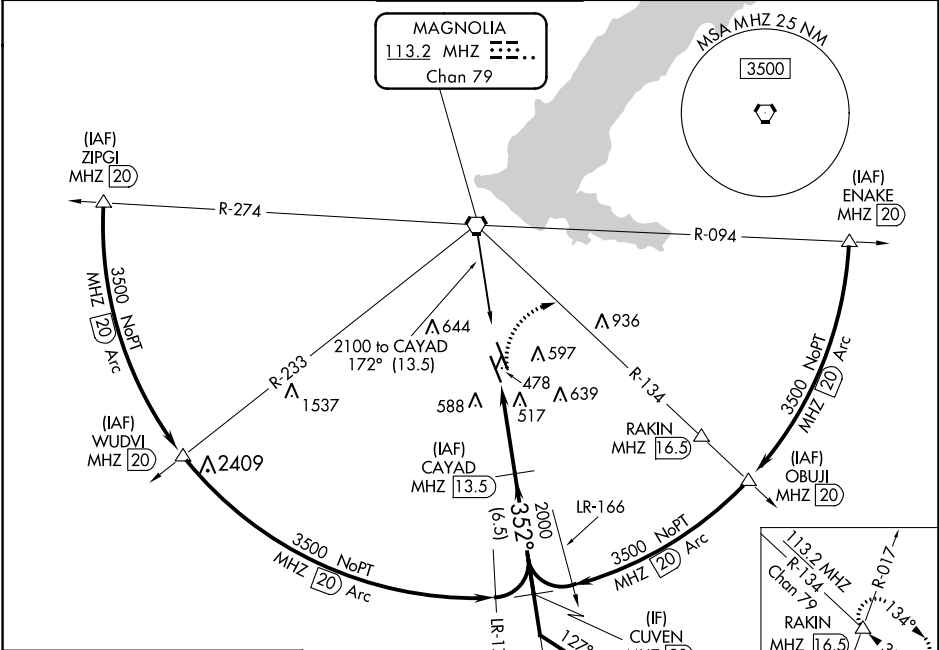
VOR/DME or TACAN RWY 34L

JACKSON-MEDGAR WILEY EVERS INTL (JAN)

⚠ When local altimeter setting not received, use Hawkins Fld altimeter setting and increase all MDA 20 feet; increase S-34L Cats C/D/E visibility 1/8 mile. Circling NA for Cat E southwest of Rwy 16R-34L. Helicopter visibility reduction below 3/4 SM NA.

MALSR MISSED APPROACH: Climbing right turn to 3000 on heading 120° and MHZ VORTAC R-134 to RAKIN INT/ MHZ 16.5 DME and hold.

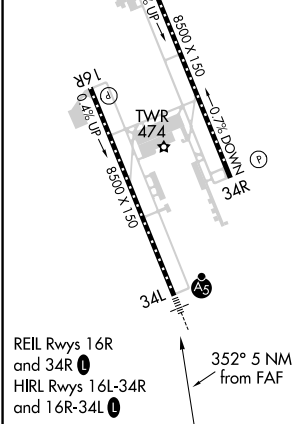
ATIS 121.05	JACKSON APP CON* 123.9 317.7	JACKSON TOWER* 120.9 (CTAF) 352.0	GND CON 121.7 348.6	UNICOM 122.95
-----------------------	--	---	-------------------------------	-------------------------



SC-4, 22 FEB 2024 to 21 MAR 2024

SC-4, 22 FEB 2024 to 21 MAR 2024

ELEV 346	TDZE 329
----------	----------



3000	hdg 120°	MHZ R-134	RAKIN	△	CAYAD MHZ 13.5	Remain within 15 NM
		MHZ 9.9	MHZ 8.5	2000	2100	
CATEGORY	A	B	C	D	E	
S-34L	840/55	511 (500-1)	840-1 3/8	511 (500-1 3/8)		
C CIRCLING	880-1 534 (600-1)	900-1 554 (600-1)	900-1 1/2 554 (600-1 1/2)	960-2 614 (700-2)	1040-2 1/2 694 (700-2 1/2)	

VORTAC MHz 113.2 Chan 79	APP CRS 349°	Rwy Idg TDZE Apt Elev	8500 346 346
--	------------------------	-----------------------------	---

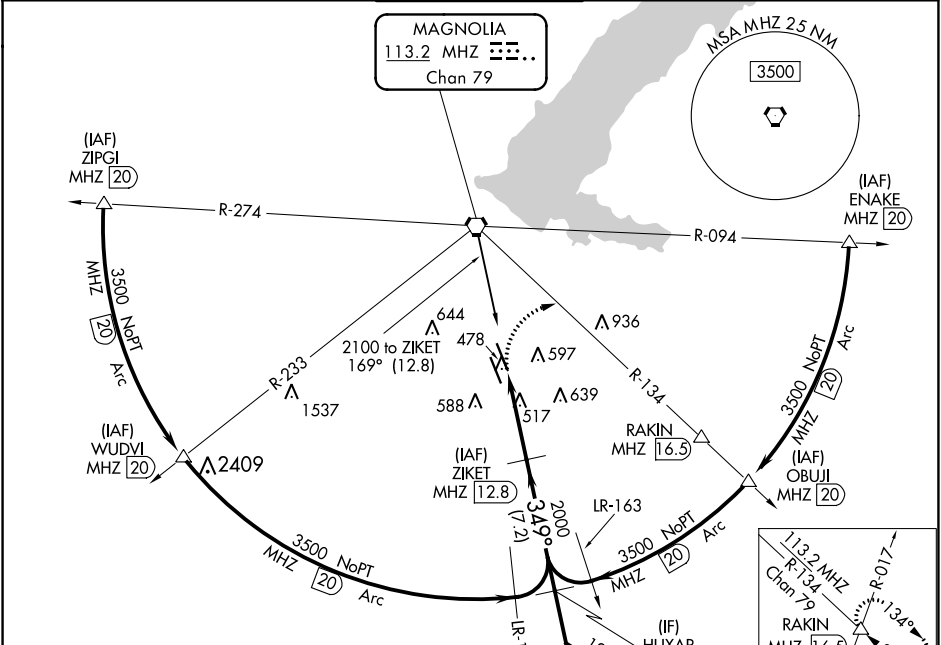
VOR/DME or TACAN RWY 34R

JACKSON-MEDGAR WILEY EVERS INTL (JAN)

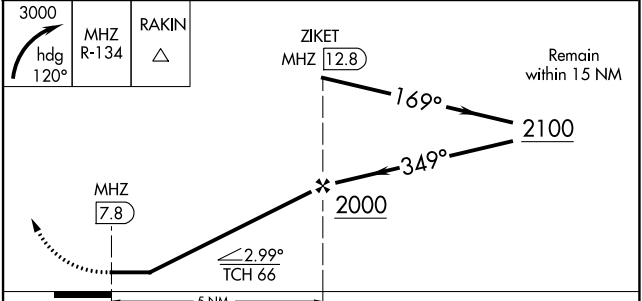
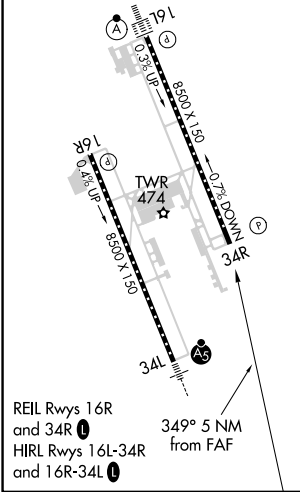
⚠ When local altimeter setting not received, use Hawkins Fld altimeter setting and increase all MDA 20 feet; increase S-34R Cats C/D/E visibility 1/8 mile. Circling NA for Cat E southwest of Rwy 16R-34L. Helicopter visibility reduction below 3/8 SM NA.

MISSED APPROACH: Climbing right turn to 3000 on heading 120° and MHz VORTAC R-134 to RAKIN INT/ MHz 16.5 DME and hold.

ATIS 121.05	JACKSON APP CON* 123.9 317.7	JACKSON TOWER* 120.9 (CTAF) 352.0	GND CON 121.7 348.6	UNICOM 122.95
-----------------------	--	---	-------------------------------	-------------------------



ELEV 346	TDZE 346
----------	----------



CATEGORY	A	B	C	D	E
S-34R	920/55	574 (600-1)	920-1 5/8 574 (600-1 5/8)		
C CIRCLING	920-1	574 (600-1)	920-1 1/2 574 (600-1 1/2)	960-2 614 (700-2)	1040-2 1/2 694 (700-2 1/2)

SC-4, 22 FEB 2024 to 21 MAR 2024

SC-4, 22 FEB 2024 to 21 MAR 2024