

LOC/DME I-REE	APP CRS	Rwy Idg	7302
111.35	316°	TDZE	806
Chan 50 (Y)		Apt Elev	808

ILS or LOC RWY 32

SOUTHERN WISCONSIN RGNL (JVL)

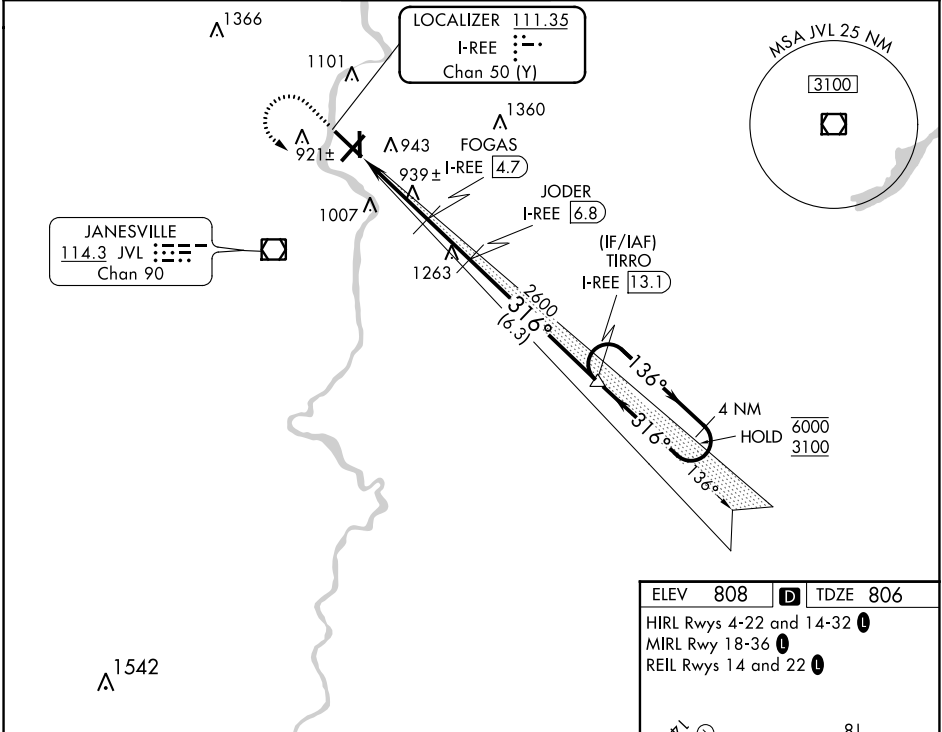
DME required. RNP APCH - GPS.

⚠ Circling Rwy 18 NA at night. When local altimeter setting not received, use Chicago/Rockford Intl altimeter setting and increase DA to 1075, increase all MDA 80 feet. Increase S-LOC 32 Cats C and D visibility $\frac{3}{8}$ SM, and Circling Cats C/D $\frac{1}{4}$ SM. VDP NA when using Chicago/Rockford Intl altimeter setting. For inop ALS when using Chicago/Rockford Intl altimeter setting, increase S-ILS 32 visibility all Cats to $\frac{3}{8}$ SM and S-LOC 32 visibility Cats C/D to $1\frac{3}{8}$ SM.

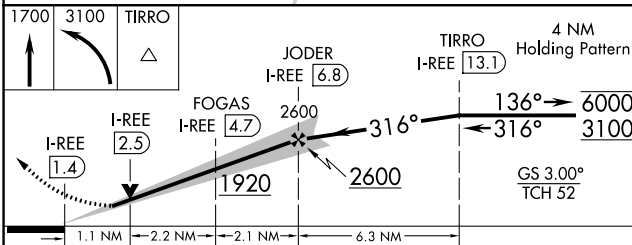


MISSED APPROACH: Climb to 1700 then climbing left turn to 3100 direct TIRRO and hold.

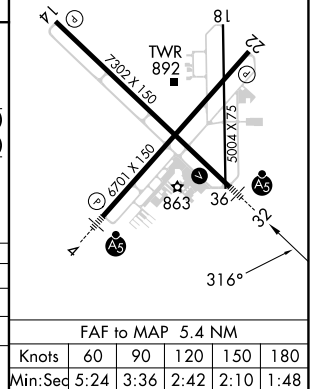
ATIS 128.25	ROCKFORD APP CON 121.0 327.0	JANESVILLE TOWER* 118.8 (CTAF) 0 225.4	GND CON 121.65	CLNC DEL 121.65	UNICOM 122.95
-----------------------	--	---	--------------------------	---------------------------	-------------------------



ELEV 808	D TDZE 806
HIRL Rwy 4-22 and 14-32 ⬇	
MIRL Rwy 18-36 ⬇	
REIL Rwy 14 and 22 ⬇	



CATEGORY	A	B	C	D
S-ILS 32	1006- $\frac{1}{2}$ 200 (200- $\frac{1}{2}$)			
S-LOC 32	1200- $\frac{1}{2}$	394 (400- $\frac{1}{2}$)	1200- $\frac{3}{8}$	394 (400- $\frac{3}{8}$)
C CIRCLING	1260-1 452 (500-1)	1320-1 512 (600-1)	1420-1 $\frac{3}{4}$ 612 (700-1 $\frac{3}{4}$)	1460-2 652 (700-2)



EC-3, 22 FEB 2024 to 21 MAR 2024

EC-3, 22 FEB 2024 to 21 MAR 2024

FAF to MAP 5.4 NM					
Knots	60	90	120	150	180
Min:Seq	5:24	3:36	2:42	2:10	1:48

LOC I-JVL 109.1	APP CRS 044°	Rwy ldg 6701
		TDZE 806
		Apt Elev 808

ILS or LOC RWY 4

SOUTHERN WISCONSIN RGNL (JVL)

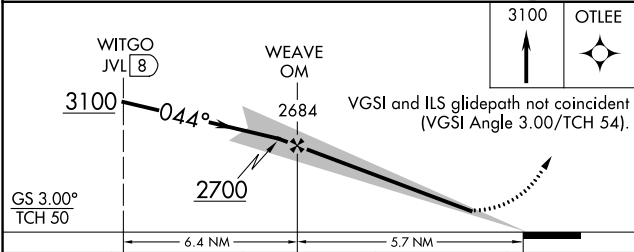
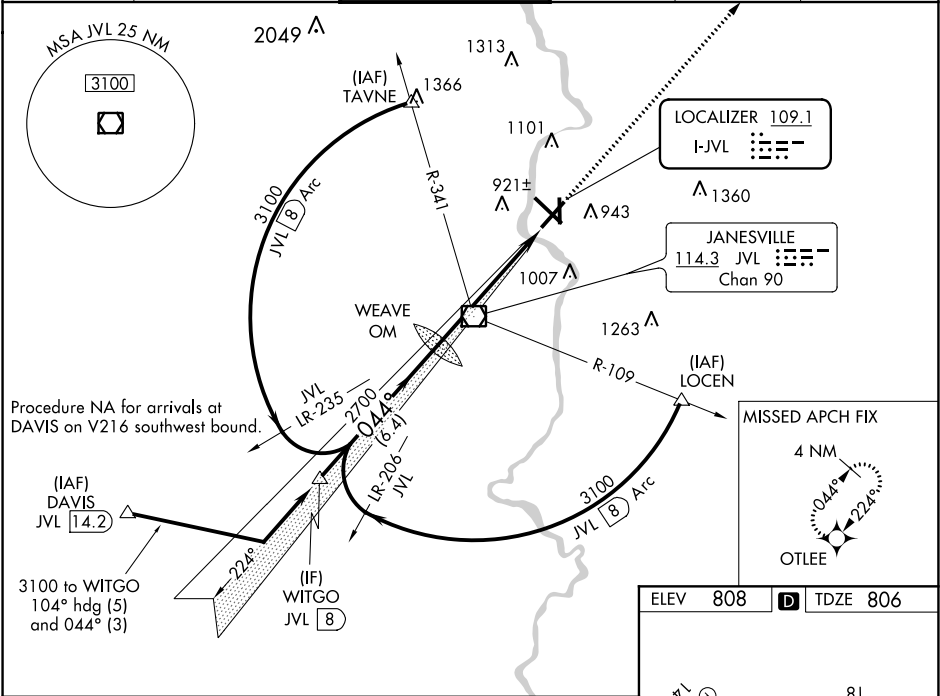
DME required. RNP APCH - GPS.

▼ When local altimeter setting not received, use Rockford altimeter setting and increase DA 69 feet and all MDAs 80 feet; increase S-LOC 4 Cats C/D and Circling Cats C/D 1/4 SM. For inop ALS when using Rockford altimeter setting; increase S-ILS 4 all Cats visibility to 1/2 SM and S-LOC 4 Cats C/D visibility to 1/2 SM. Circling Rwy 18 NA at night. DME from JVL VOR/DME. DME use requires simultaneous reception of I-JVL and JVL VOR/DME.

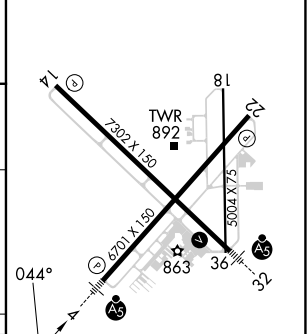


MISSED APPROACH:
Climb to 3100 direct
OTLEE and hold.

ATIS 128.25	ROCKFORD APP CON 121.0 327.0	JANESVILLE TOWER ★ 118.8(CTAF) 225.4	GND CON 121.65	CLNC DEL 121.65	UNICOM 122.95
-----------------------	--	--	--------------------------	---------------------------	-------------------------



ELEV 808	D TDZE 806
----------	-------------------



CATEGORY	A	B	C	D
S-ILS 4	1006-1/2		200 (200-1/2)	
S-LOC 4	1400-1/2	594 (600-1/2)	1400-1 594 (600-1)	1400-1 1/4 594 (600-1 1/4)
C CIRCLING	1400-1	592 (600-1)	1420-1 1/4 612 (700-1 1/4)	1460-2 652 (700-2)

REIL Rws 14 and 22 1					
MIRL Rwy 18-36 1					
HIRL Rws 4-22 and 14-32 1					
FAF to MAP 5.7 NM					
Knots	60	90	120	150	180
Min:Sec	5:42	3:48	2:51	2:17	1:54

EC-3, 22 FEB 2024 to 21 MAR 2024

EC-3, 22 FEB 2024 to 21 MAR 2024

WAAS CH 86617 W14A	APP CRS 135°	Rwy Idg TDZE Apt Elev	7302 803 808
--	------------------------	-----------------------------	---

RNAV (GPS) RWY 14

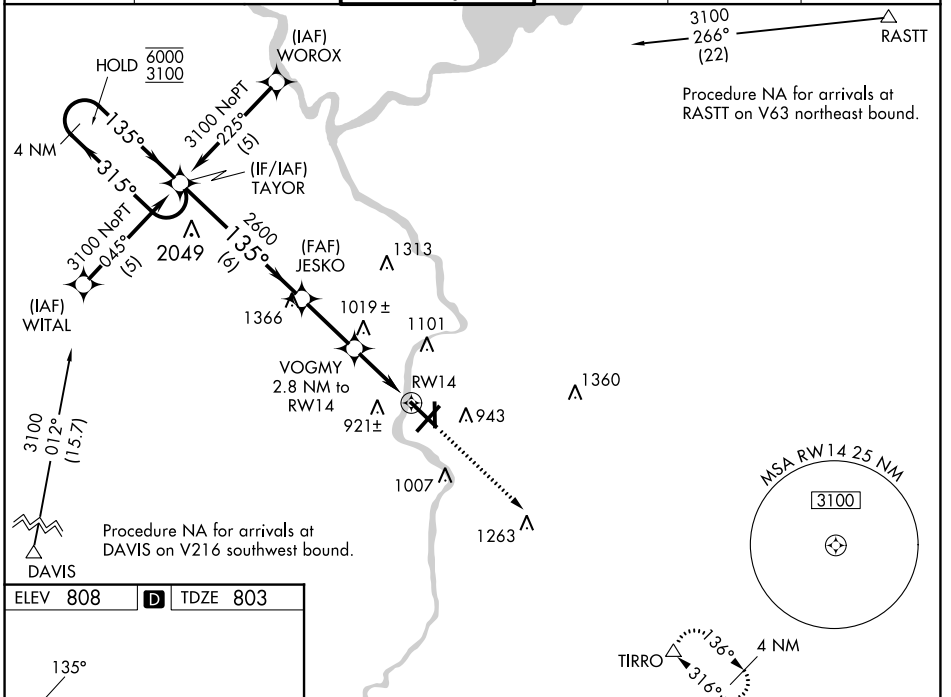
SOUTHERN WISCONSIN RGNL (JVL)

RNP APCH-GPS.

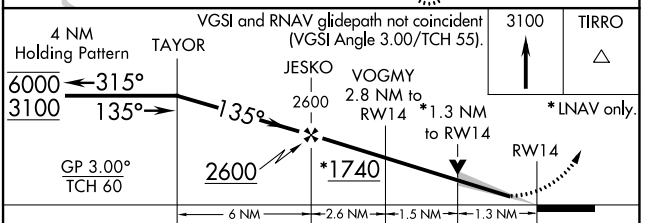
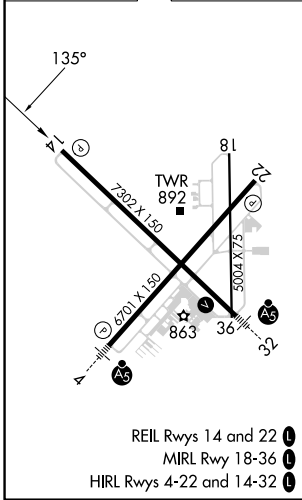
⚠ Circling Rwy 18 NA at night. Baro-VNAV NA when using Rockford altimeter setting. For uncompensated Baro-VNAV systems, LNAV/VNAV NA below -16°C or above 47°C. VDP NA when using Rockford altimeter setting. When local altimeter setting not received, use Rockford altimeter setting and increase LPV DA to 1072 feet, LNAV/VNAV DA to 1291 feet, and all MDAs 80 feet; increase LPV all Cats visibility $\frac{1}{8}$ SM, LNAV/VNAV all Cats visibility $\frac{1}{4}$ SM, LNAV Cat C/D visibility $\frac{1}{4}$ SM, and Circling Cat C/D visibility $\frac{1}{4}$ SM.

MISSED APPROACH: Climb to 3100 direct TIRRO and hold.

ATIS 128.25	ROCKFORD APP CON 121.0 327.0	JANESVILLE TOWER ★ 118.8(CTAF) 0 225.4	GND CON 121.65	CLNC DEL 121.65	UNICOM 122.95
-----------------------	--	--	--------------------------	---------------------------	-------------------------



ELEV 808	D	TDZE 803
----------	----------	----------



CATEGORY	A	B	C	D
LPV DA	1003- $\frac{3}{4}$		200 (200- $\frac{3}{4}$)	
LNAV/VNAV DA	1222-1 $\frac{1}{8}$		419 (500-1 $\frac{1}{8}$)	
LNAV MDA	1280-1	477 (500-1)	1280-1 $\frac{3}{8}$ 477 (500-1 $\frac{3}{8}$)	1280-1 $\frac{3}{8}$ 477 (500-1 $\frac{3}{8}$)
CIRCLING	1280-1 472 (500-1)	1320-1 512 (600-1)	1420-1 $\frac{3}{4}$ 612 (700-1 $\frac{3}{4}$)	1460-2 652 (700-2)

EC-3, 22 FEB 2024 to 21 MAR 2024

EC-3, 22 FEB 2024 to 21 MAR 2024

WAAS CH 40417 W22A	APP CRS 224°	Rwy Idg TDZE Apr Elev	6701 805 808
--	------------------------	-----------------------------	---

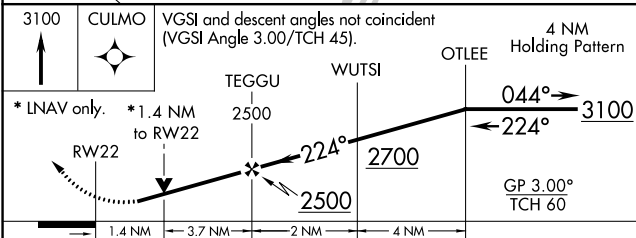
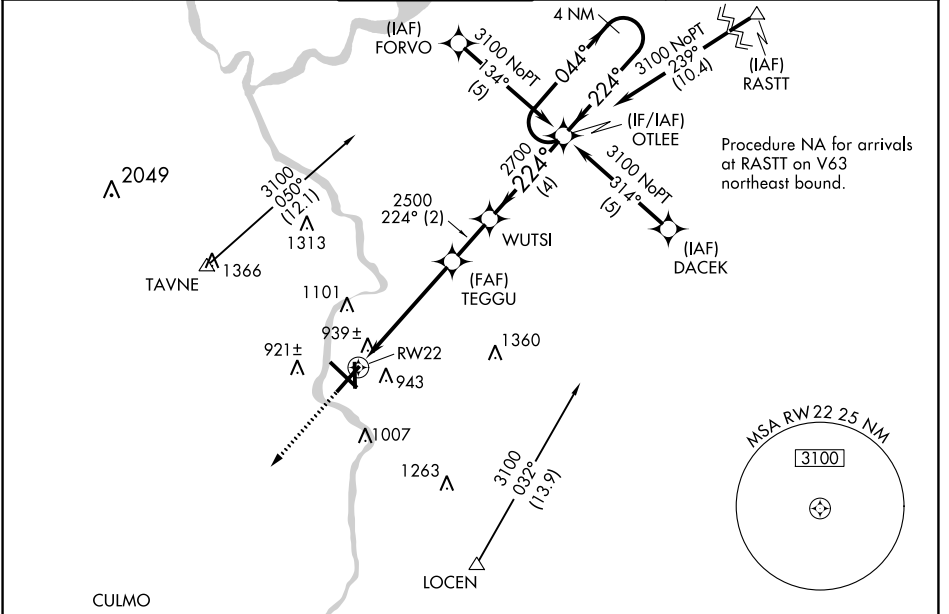
RNAV (GPS) RWY 22

SOUTHERN WISCONSIN RGNL (JVL)

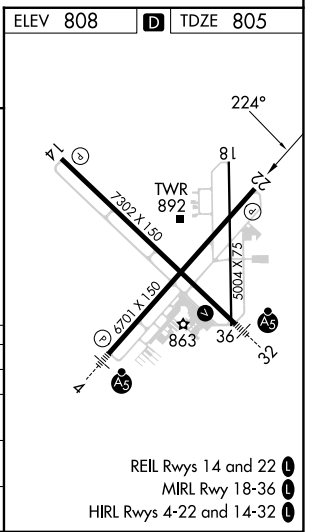
⚠ Circling to Rwy 18 NA at night. Baro-VNAV NA when using Rockford altimeter setting. For uncompensated Baro-VNAV systems, LNAV/VNAV NA below -16°C (4°F) or above 47°C (116°F).
⚠ DME/DME RNP-0.3 NA. Visibility reduction by helicopters NA. When local altimeter setting not received, use Rockford altimeter setting and increase LPV DA to 1189 feet, LNAV/VNAV DA to 1313 feet, and all MDAs 80 feet; increase LPV all Cats visibility ¼ SM, LNAV/VNAV all Cats visibility ½ SM, LNAV Cats C/D visibility ¾ SM and Circling Cats C/D visibility ¼ SM.
 VDP NA with Rockford altimeter setting.

MISSED APPROACH:
Climb to 3100 direct CULMO and hold.

ATIS 128.25	ROCKFORD APP CON 121.0 327.0	JANESVILLE TOWER ★ 118.8(CTAF) 0 225.4	GND CON 121.65	CLNC DEL 121.65	UNICOM 122.95
-----------------------	--	--	--------------------------	---------------------------	-------------------------



CATEGORY	A	B	C	D
LPV DA	1120-1 315 (400-1)			
LNAV/VNAV DA	1244-1½ 439 (500-1½)			
LNAV MDA	1320-1 515 (600-1)	1320-1½ 515 (600-1½)	1320-1¾ 515 (600-1¾)	
CIRCLING	1320-1 512 (600-1)	1420-1¾ 612 (700-1¾)	1460-2 652 (700-2)	



EC-3, 22 FEB 2024 to 21 MAR 2024

EC-3, 22 FEB 2024 to 21 MAR 2024

REIL Rwy 14 and 22
MIRL Rwy 18-36
HIRL Rwy 4-22 and 14-32

APP CRS	Rwy Idg	7302
316°	TDZE	806
	Apt Elev	808

RNAV (GPS) RWY 32

SOUTHERN WISCONSIN RGNL (JVL)

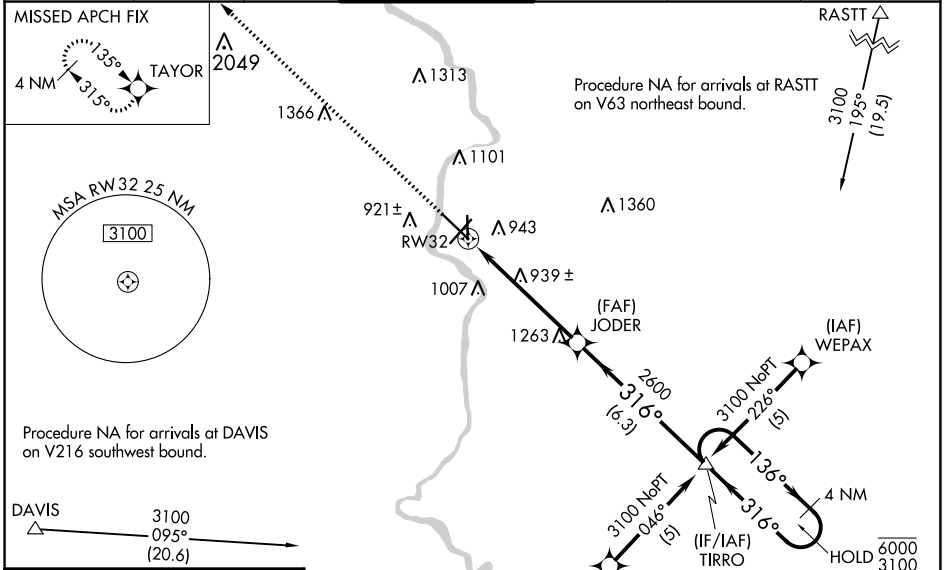
RNP APCH-GPS.

NA Circling Rwy 18 NA at night. Baro-VNAV and VDP NA when using Rockford altimeter setting. For uncompensated Baro-VNAV systems, procedure NA below -16° C or above 54°C. When local altimeter setting not received, use Rockford altimeter setting and increase LNAV/VNAV DA to 1289 feet and all MDAs 80 feet; increase LNAV/VNAV all Cats visibility ¼ SM, LNAV Cat C/D visibility ⅓ SM, and Circling Cat C/D visibility ¼ SM. For inop ALS when using Rockford altimeter setting, increase LNAV/VNAV all Cats visibility and LNAV Cat C/D visibility to 1⅓ SM.

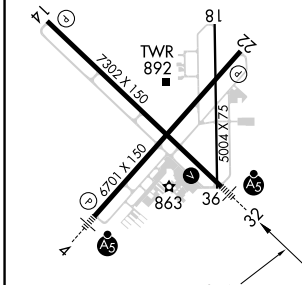
MALS

MISSED APPROACH: Climb to 3100 direct TAYOR and hold.

ATIS	ROCKFORD APP CON	JANESVILLE TOWER ★	GND CON	CLNC DEL	UNICOM
128.25	121.0 327.0	118.8 (CTAF) 0 225.4	121.65	121.65	122.95



ELEV 808	D	TDZE 806
----------	----------	----------



CATEGORY	A	B	C	D
LNAV/VNAV DA	1220-¾ 414 (500-¾)			
LNAV MDA	1200-½ 394 (400-½)	1200-⅝ 394 (400-⅝)		
CIRCLING	1260-1 452 (500-1)	1320-1 512 (600-1)	1420-1¾ 612 (700-1¾)	1460-2 652 (700-2)

EC-3, 22 FEB 2024 to 21 MAR 2024

EC-3, 22 FEB 2024 to 21 MAR 2024


WAAS CH 82617 W04A	APP CRS 043°	Rwy Idg TDZE 806 Apt Elev 808	6701
--	------------------------	---	-------------

RNAV (GPS) RWY 4

SOUTHERN WISCONSIN RGNL (JVL)

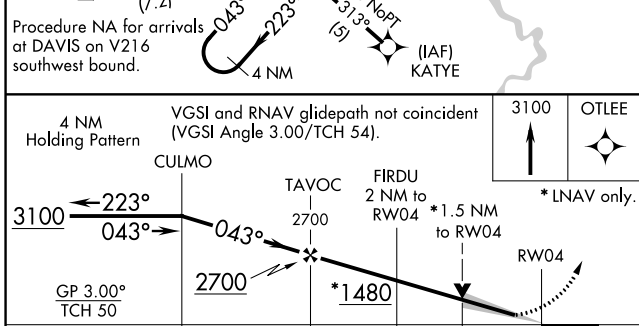
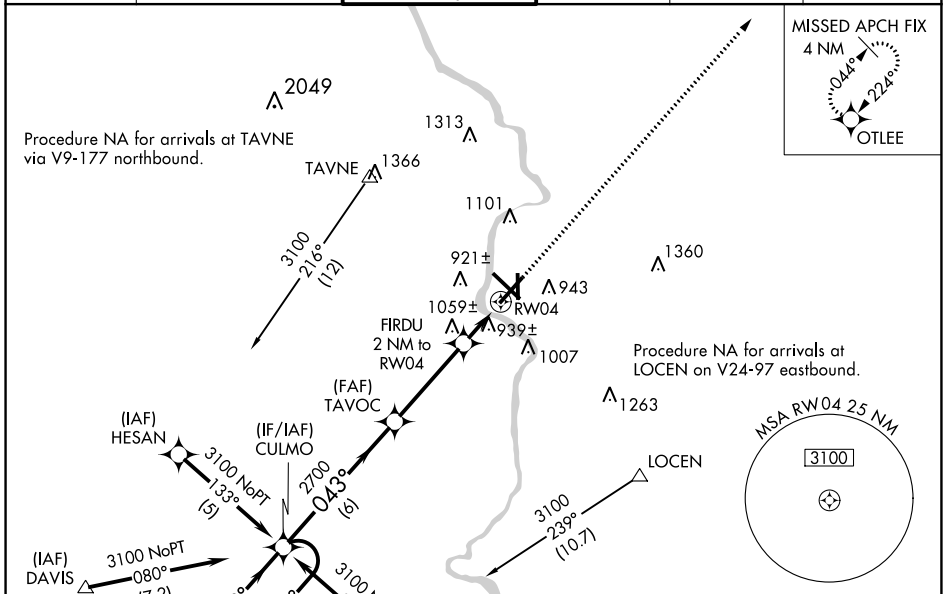
⚠ Circling to Rwy 18 NA at night. Baro-VNAV NA when using Rockford altimeter setting. For uncompensated Baro-VNAV systems, LNAV/VNAV NA below -1.6°C (4°F) or above 47°C (116°F). DME/DME RNP-0.3 NA. VDP NA with Rockford altimeter setting. When local altimeter setting not received, use Rockford altimeter setting and increase LPV DA to 1075 feet, LNAV/VNAV DA to 1314 feet and all MDAs 80 feet; increase LNAV Cat C and Circling Cats C/D visibility ¼ SM. For inop ALS, when using Rockford altimeter setting increase LPV all Cats visibility to ¾ SM and LNAV/VNAV all Cats visibility to 1 ⅜ SM.

MALSR

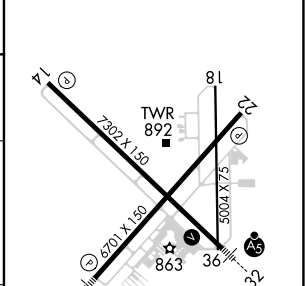


MISSED APPROACH:
Climb to 3100 direct
OTLEE and hold.

ATIS 128.25	ROCKFORD APP CON 121.0 327.0	JANESVILLE TOWER ★ 118.8 (CTAF) 0 225.4	GND CON 121.65	CLNC DEL 121.65	UNICOM 122.95
-----------------------	--	---	--------------------------	---------------------------	-------------------------



ELEV 808	D TDZE 806
----------	-------------------



CATEGORY	A	B	C	D
LPV DA	1006-1/2		200 (200-1/2)	
LNAV/VNAV DA	1245-1		439 (500-1)	
LNAV MDA	1320-1/2 514 (600-1/2)		1320-1 514 (600-1)	1320-1 1/4 514 (600-1 1/4)
CIRCLING	1320-1 512 (600-1)		1420-1 3/4 612 (700-1 3/4)	1460-2 652 (700-2)

REIL Rwy 14 and 22 **①**
MIRL Rwy 18-36 **②**
HIRL Rwy 4-22 and 14-32 **③**

EC-3, 22 FEB 2024 to 21 MAR 2024

EC-3, 22 FEB 2024 to 21 MAR 2024