

| | | | |
|---------------------------|------------------------|-----------------------------|---|
| LOC I-JVY 111.7 | APP CRS 182° | Rwy Idg TDZE Apt Elev | 7000 476 476 |
|---------------------------|------------------------|-----------------------------|---|


ILS or LOC RWY 18

CLARK RGNL (JVY)

ADF required. RADAR required for procedure entry.

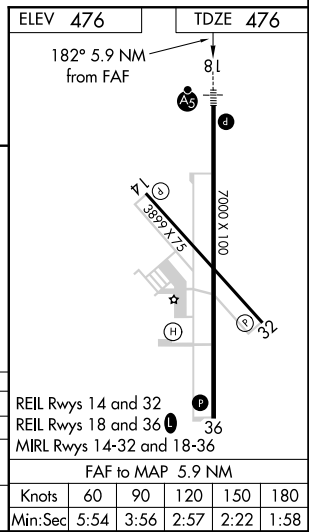
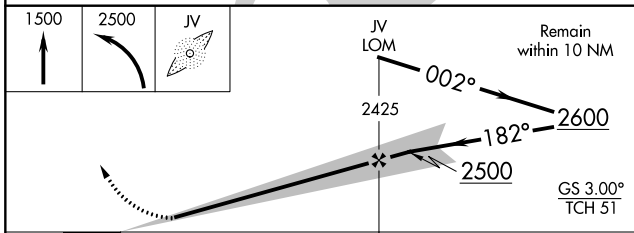
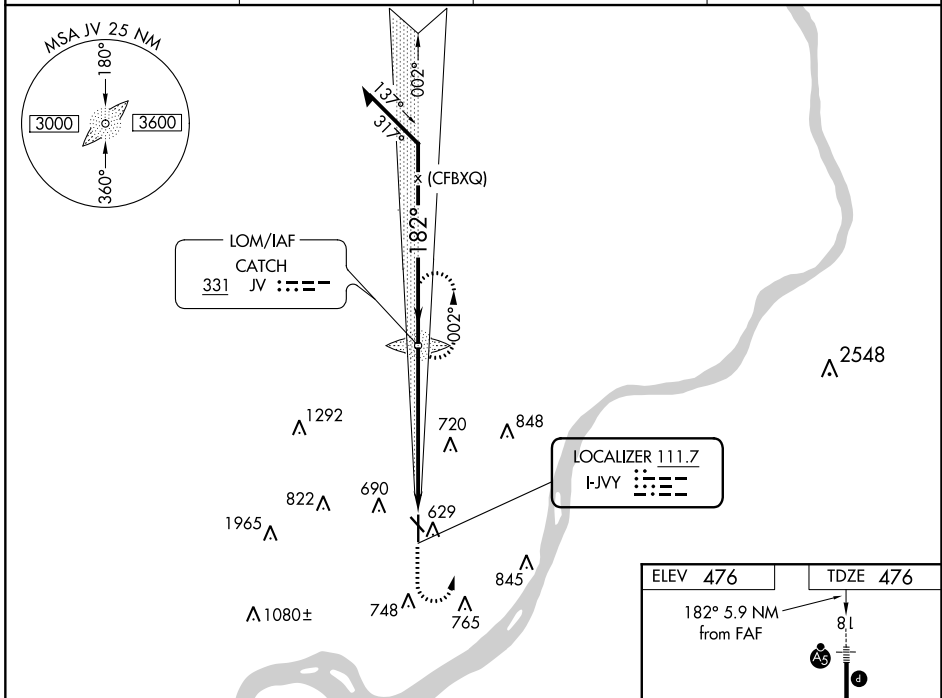
▼ Circling NA for Cat D southwest of Rws 14 and 36. Circling Rwy 14, 32 NA at night.

▲ NA For inop ALS, increase S-LOC 18 Cats C and D visibility to 1 3/8 SM. When local altimeter setting not received, use Louisville Muhammad Ali Intl altimeter setting: increase DA to 706; increase all MDAs 40 feet, S-LOC 18 Cats C and D visibility 1/8 SM and Circling Cat C visibility 1/4 SM.

MALSRL


MISSED APPROACH:
 Climb to 1500 then climbing left turn to 2500 direct CATCH LOM and hold.

| | | | |
|--------------------------|--|----------------------------|---|
| AWOS-3 118.575 | LOUISVILLE APP CON 132.075 327.0 | CLINC DEL 118.05 | UNICOM 122.7 (CTAF)  |
|--------------------------|--|----------------------------|---|



| CATEGORY | A | B | C | D |
|----------|-----------------------|-----------------------|-----------------------------|-----------------------|
| S-ILS 18 | | 676-1/2 | 200 (200-1/2) | |
| S-LOC 18 | 980-1/2 | 504 (600-1/2) | 980-1 | 504 (600-1) |
| CIRCLING | 1000-1 524 (600-1) | 1040-1 564 (600-1) | 1060-1 1/2 584 (600-1/2) | 1100-2 624 (700-2) |

EC-2, 10 SEP 2020 to 08 OCT 2020

EC-2, 10 SEP 2020 to 08 OCT 2020

NDB RWY 18

CLARK RGNL (JVY)

| | | | |
|----------------------|------------------------|-----------------------------|---|
| LOM JV 331 | APP CRS 182° | Rwy Idg TDZE Apt Elev | 7000 476 476 |
|----------------------|------------------------|-----------------------------|---|

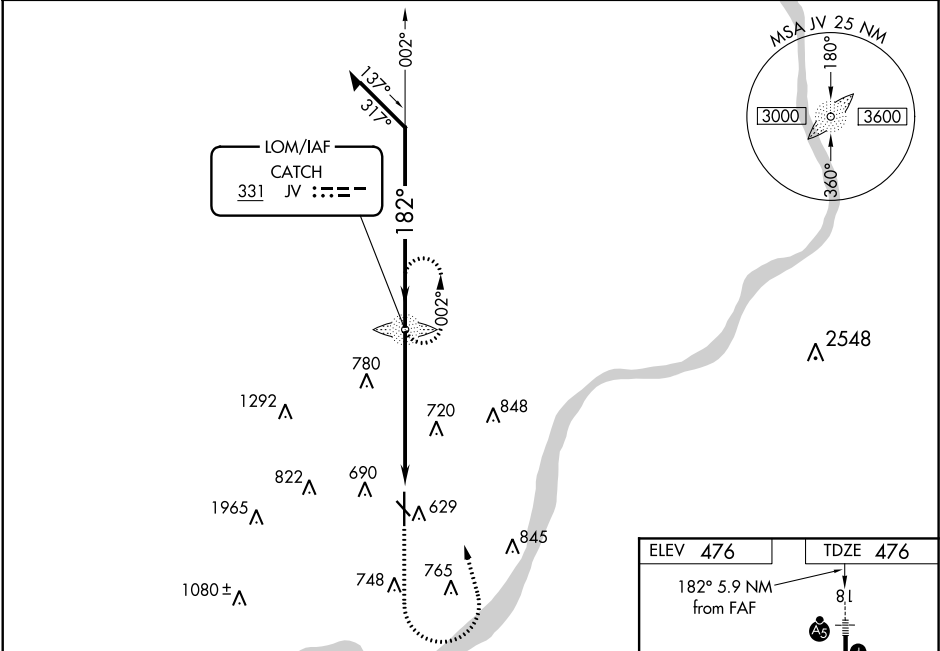
RADAR required for procedure entry.

▽ Circling NA for Cat D southwest of Rws 14 and 36. Circling Rwy 14, 32 NA at night. For inop ALS, increase S-18 Cats A and B visibility to 1 SM and Cats C and D to 1 3/4 SM. When local climeter setting not received, use Louisville Muhammad Ali Intl climeter setting and increase all MDAs 40 feet and Circling visibility Cat C 1/8 SM. For inop ALS when using Louisville Muhammad Ali Intl climeter setting, increase S-18 Cats A and B visibility to 1 SM.



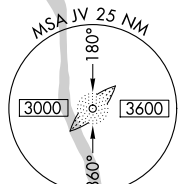
MISSED APPROACH: Climb to 1500 then climbing left turn to 2500 direct CATCH LOM and hold.

| | | | |
|--------------------------|--|---------------------------|---------------------------------|
| AWOS-3 118.575 | LOUISVILLE APP CON 132.075 327.0 | CLNC DEL 118.05 | UNICOM 122.7 (CTAF) 0 |
|--------------------------|--|---------------------------|---------------------------------|

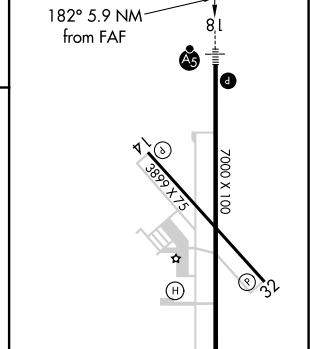


EC-2, 10 SEP 2020 to 08 OCT 2020

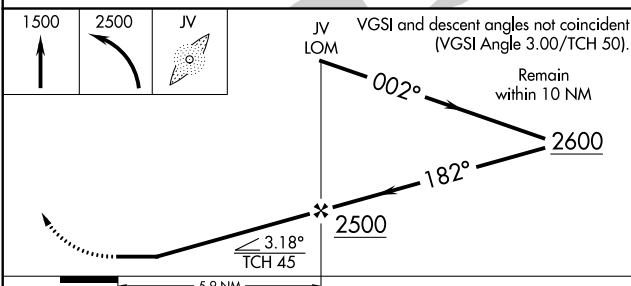
EC-2, 10 SEP 2020 to 08 OCT 2020



| | |
|----------|----------|
| ELEV 476 | TDZE 476 |
|----------|----------|



| | | | | | |
|--------------------------|--------------------|------|------|------|------|
| REIL Rws 14 and 32 | REIL Rws 18 and 36 | 36 | | | |
| MIRL Rws 14-32 and 18-36 | FAF to MAP 5.9 NM | | | | |
| Knots | 60 | 90 | 120 | 150 | 180 |
| Min:Sec | 5:54 | 3:56 | 2:57 | 2:22 | 1:58 |



| CATEGORY | A | B | C | D |
|-------------------|----------|---------------|-----------------|-----------------|
| S-18 | 1080-3/4 | 604 (700-3/4) | 1080-1 3/8 | 604 (700-1 3/8) |
| C CIRCLING | 1080-1 | 604 (700-1) | 1080-1 3/4 | 1100-2 |
| | | | 604 (700-1 3/4) | 624 (700-2) |

| | | | |
|-------------------------|------------------------|----------------------------|-------------|
| WAAS CH 82426 | APP CRS 182° | Rwy Idg TDZE 476 | 7000 |
| W18A | | Apt Elev 476 | |

RNAV (GPS) RWY 18

CLARK RGNL (JVY)

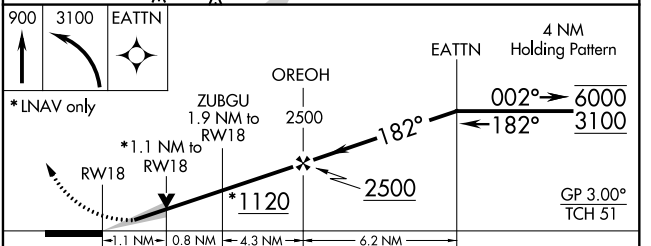
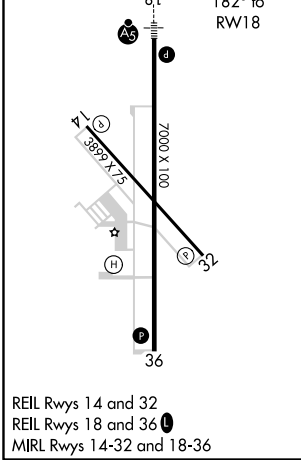
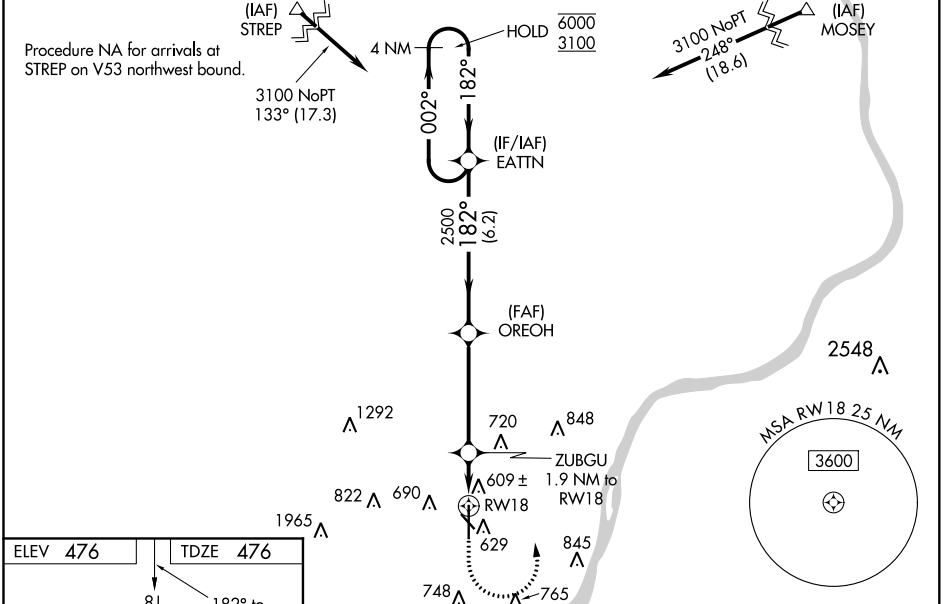
RNP APCH.

⚠ Circling NA for Cat D southwest of Rwy 14 and 36. Circling Rwy 14, 32 NA at night. Baro-VNAV and VDP NA when using Louisville Muhammad Ali Intl altimeter setting. For uncompensated Baro-VNAV systems, LNAV/VNAV NA below -15°C or above 54°C. For inop ALS, increase LNAV/VNAV visibility to 1 SM. When local altimeter setting not received, use Louisville Muhammad Ali Intl altimeter setting: increase all DA 30 feet and LNAV/VNAV visibility ½ SM; increase all MDAs 40 feet, LNAV visibility Cats C and D ½ SM and Circling visibility Cat C ¼ SM. For inop ALS when using Louisville Muhammad Ali Intl altimeter setting, increase LNAV/VNAV visibility to 1½ SM.

MALSR

MISSED APPROACH:
Climb to 900 then climbing left turn to 3100 direct EATTN and hold.

| | | | |
|--------------------------|--|---------------------------|---------------------------------|
| AWOS-3 118.575 | LOUISVILLE APP CON 132.075 327.0 | CLNC DEL 118.05 | UNICOM 122.7 (CTAF) 0 |
|--------------------------|--|---------------------------|---------------------------------|



| CATEGORY | A | B | C | D |
|-------------------|-----------------------|-----------------------|-------------------------|-----------------------|
| LPV DA | | 676-½ | 200 (200-½) | |
| LNAV/VNAV DA | | 850-⅝ | 374 (400-⅝) | |
| LNAV MDA | 860-½ | 384 (400-½) | 860-⅝ | 384 (400-⅝) |
| C CIRCLING | 1000-1 524 (600-1) | 1040-1 564 (600-1) | 1060-1½ 584 (600-1½) | 1100-2 624 (700-2) |

EC-2, 10 SEP 2020 to 08 OCT 2020

EC-2, 10 SEP 2020 to 08 OCT 2020