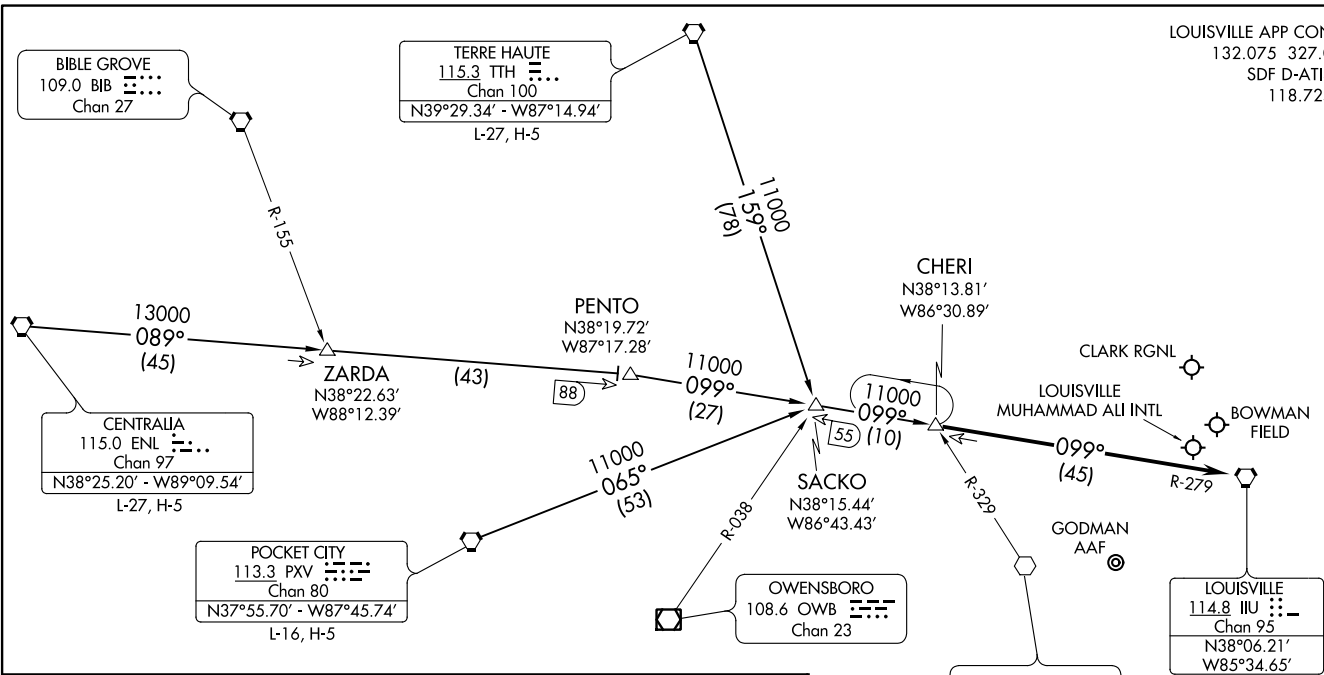


CHERI FOUR ARRIVAL
(CHERI.CHER14) 15AUG19

(CHERI.CHER14) 20198
CHERI FOUR ARRIVAL

LOUISVILLE APP CON
132.075 327.0
SDF D-ATIS
118.725



AL-239 (FAA)

ARRIVAL ROUTE DESCRIPTION

CENTRALIA TRANSITION (ENL.CHER14): From over ENL VORTAC via ENL R-089 and IIU R-279 to CHERI INT. Thence. . . .

POCKET CITY TRANSITION (PXV.CHER14): From over PXV VORTAC via PXV R-065 and IIU R-279 to CHERI INT. Thence. . . .

TERRE HAUTE TRANSITION (TTH.CHER14): From over TTH VORTAC via TTH R-159 and IIU R-279 to CHERI INT. Thence. . . .

. . . . From over CHERI INT on IIU R-279 to IIU VORTAC. Expect radar vectors.

NOTE: Radar required.

NOTE: Chart not to scale.


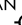

LOUISVILLE, KENTUCKY

LOUISVILLE, KENTUCKY


DARBY SEVEN ARRIVAL

LOUISVILLE, KENTUCKY

LOUISVILLE APP CON
 132.075 327.0
 LOU ATIS
 120.025
 SDF D-ATIS
 118.725


CLARK RGNL 
 BOWMAN FIELD 
 LOUISVILLE MUHAMMAD ALI INTL 

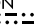
NOTE: RADAR required.
 NOTE: DME required for LONDON and UNCKL Transitions.

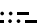
LOUISVILLE
 114.8 IIIU 
 Chan 95
 N38° 06.21'
 W85° 34.65'

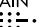
DARBY
 N37° 39.26'
 W84° 57.21'

UNCKL
 N37° 28.88'
 W84° 42.98'

LONDON
 116.1 LOZ 
 Chan 108
 N37° 01.99' - W84° 06.60'
 L-26

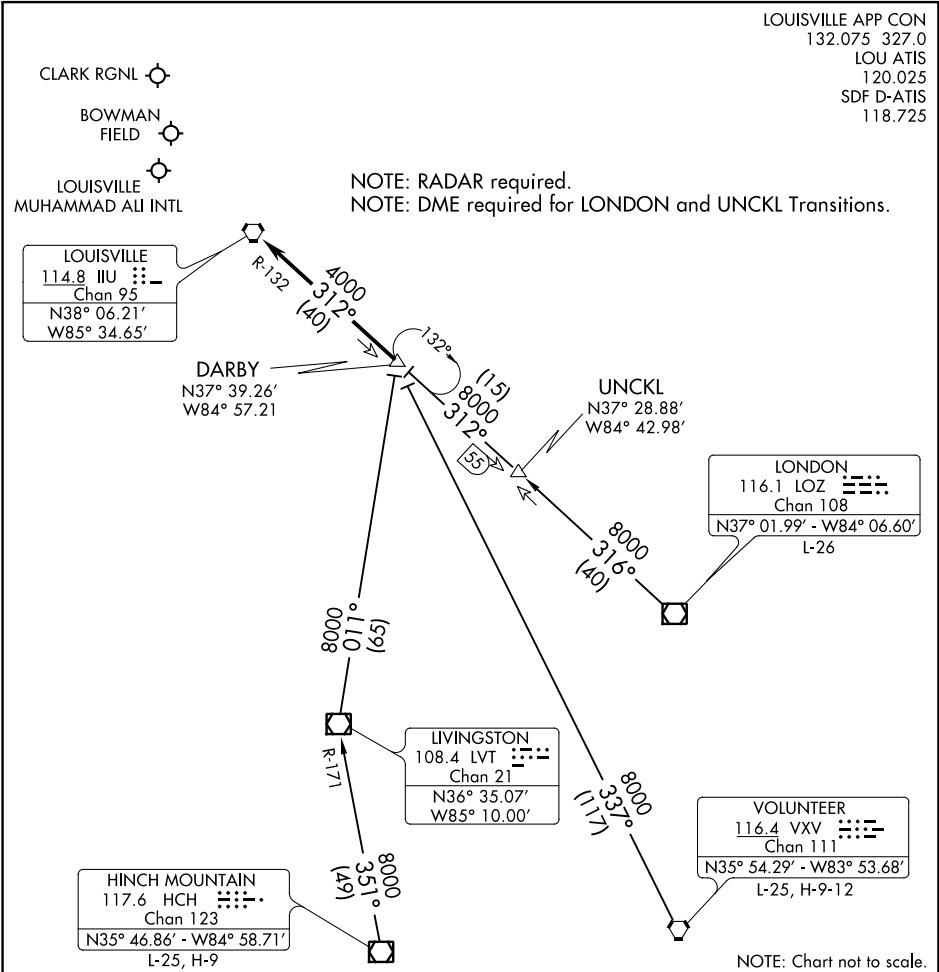
LIVINGSTON
 108.4 LVT 
 Chan 21
 N36° 35.07'
 W85° 10.00'

VOLUNTEER
 116.4 VXV 
 Chan 111
 N35° 54.29' - W83° 53.68'
 L-25, H-9-12

HINCH MOUNTAIN
 117.6 HCH 
 Chan 123
 N35° 46.86' - W84° 58.71'
 L-25, H-9

SE-1, 10 SEP 2020 to 08 OCT 2020

SE-1, 10 SEP 2020 to 08 OCT 2020



NOTE: Chart not to scale.

ARRIVAL ROUTE DESCRIPTION

HINCH MOUNTAIN TRANSITION (HINCH.DARBY7): From over HCH VOR/DME via HCH R-351 and LVT R-171 to LVT VOR/DME, then via LVT R-011 to DARBY INT. Thence. . .

LONDON TRANSITION (LOZ.DARBY7): From over LOZ VOR/DME via LOZ R-316 to UNCKL INT, then via IIIU R-132 to DARBY INT. Thence. . .

UNCKL TRANSITION (UNCKL.DARBY7): From over UNCKL INT via IIIU R-132 to DARBY INT. Thence. . .

VOLUNTEER TRANSITION (VXV.DARBY7): From over VXV VORTAC via VXV R-337 to DARBY INT. Thence. . .

. . . from DARBY INT on IIIU R-132 to IIIU VORTAC. Expect radar vectors to final course.

DARBY SEVEN ARRIVAL

LOUISVILLE, KENTUCKY

REDSTONE SIX ARRIVAL

LOUISVILLE, KENTUCKY

LOUISVILLE APP CON
 134.152 288.325
 LOU ATIS
 120.025
 SDF D-ATIS
 118.725

ROSEWOOD
 117.5 ROD
 Chan 122
 N40°17.27'-W084°02.59'
 L-27, H-10

CINCINNATI
 117.3 CVG
 Chan 120
 N39°00.96'-W084°42.20'
 L-26-27

SHIRT
 N39°37.80'
 W83°34.89'

APPLETON
 116.7 APE
 Chan 114
 N40°09.06'-W082°35.30'
 L-29, H-10

WARSA
 N38°45.80'
 W84°56.89'

NOTE: RADAR required.
 NOTE: DME required.

NERVE
 N38°36.94'
 W85°05.42'

RDSTN
 N38°23.38'
 W85°18.38'

CLARK
 RGNL

BOWMAN
 FIELD

LOUISVILLE
 MUHAMMAD ALI
 INTL

ZOPOM
 N38°14.23'
 W85°27.06'

FALMOUTH
 117.0 FLM
 Chan 117

LEXINGTON
 112.6 HYK
 Chan 73

LOUISVILLE
 114.8 IUU
 Chan 95
 N38°06.21'-W085°34.65'

NOTE: Chart not to scale.

SE-1, 10 SEP 2020 to 08 OCT 2020

SE-1, 10 SEP 2020 to 08 OCT 2020

ARRIVAL ROUTE DESCRIPTION

APPLETON TRANSITION (APE.RDSTN6): From over APE VORTAC via APE R-242 and CVG R-059 to CVG VORTAC, then via CVG R-221 to RDSTN. Thence....

CINCINNATI TRANSITION (CVG.RDSTN6): From over CVG VORTAC via CVG R-221 to RDSTN. Thence....

ROSEWOOD TRANSITION (ROD.RDSTN6): From over ROD VORTAC via ROD R-207 and CVG R-026 to CVG VORTAC, then via CVG R-221 to RDSTN. Thence....

....from over RDSTN on IUU R-036 to ZOPOM, then on IUU R-036 to IUU VORTAC.
 Expect radar vectors to final approach after ZOPOM.

REDSTONE SIX ARRIVAL

LOUISVILLE, KENTUCKY