

WAAS CH 82005 W16A	APP CRS 163°	Rwy Idg TDZE Apt Elev	5000 1515 1535
--	------------------------	-----------------------------	---

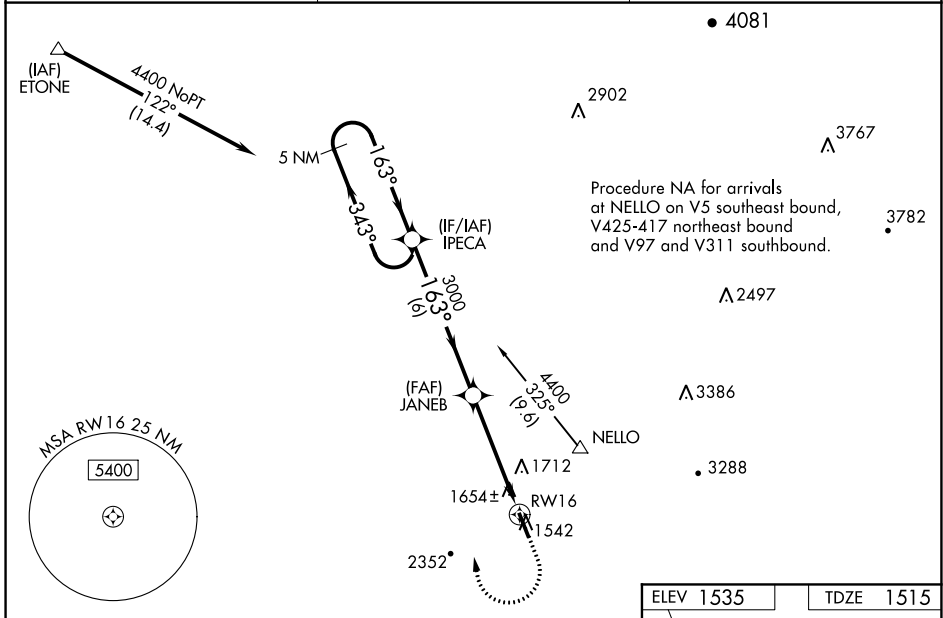
RNAV (GPS) RWY 16

PICKENS COUNTY (JZP)

NA Baro-VNAV NA when using Canton altimeter setting. For uncompensated Baro-VNAV systems, LNAV/VNAV NA below -18°C (0°F) or above 54°C (130°F). DME/DME RNP-0.3 NA. Helicopter visibility reduction below ¾ SM NA. When local altimeter setting not received, use Canton altimeter setting and increase LPV DA to 1976 LNAV/VNAV DA to 1889 and all MDA 80 feet, increase LPV all Cats visibility to 1½, LNAV/VNAV all Cats visibility to 1¾, LNAV Cat C visibility to 1¾ and Circling Cat C visibility to 2¾.

MISSED APPROACH:
Climb to 3000 then climbing right turn to 4400 direct IPECA and hold.

AWOS-3PT 118.55	ATLANTA CENTER 133.1 342.425	UNICOM 122.725 (CTAF)
---------------------------	--	---------------------------------



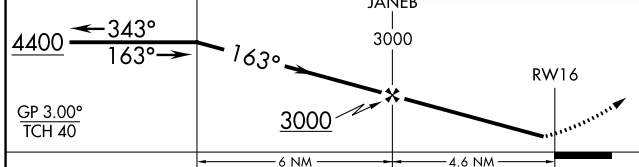
VGSI and RNAV glidepath not coincident (VGSI Angle 3.00/TCH 30).

5 NM Holding Pattern

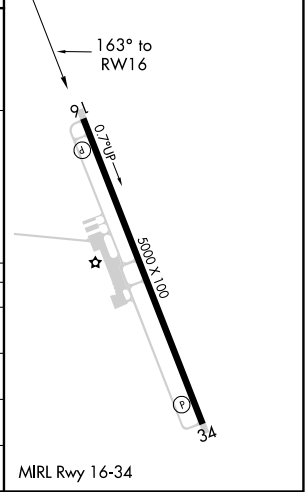
IPECA

JANE B

RWY 16



ELEV 1535	TDZE 1515
-----------	-----------



CATEGORY	A	B	C	D
LPV DA	1925-1⅜ 410 (400-1⅝)			NA
LNAV/VNAV DA	1838-1⅝ 323 (400-1⅝)			NA
LNAV MDA	1980-1	465 (500-1)	1980-1⅝ 465 (500-1⅝)	NA
CIRCLING	1980-1 445 (500-1)	2160-1 625 (700-1)	2360-2½ 825 (900-2½)	NA

SE-4, 07 OCT 2021 to 04 NOV 2021

SE-4, 07 OCT 2021 to 04 NOV 2021

WAAS CH 77705 W34A	APP CRS 343°	Rwy Idg TDZE 1535 Apt Elev 1535
--	------------------------	---

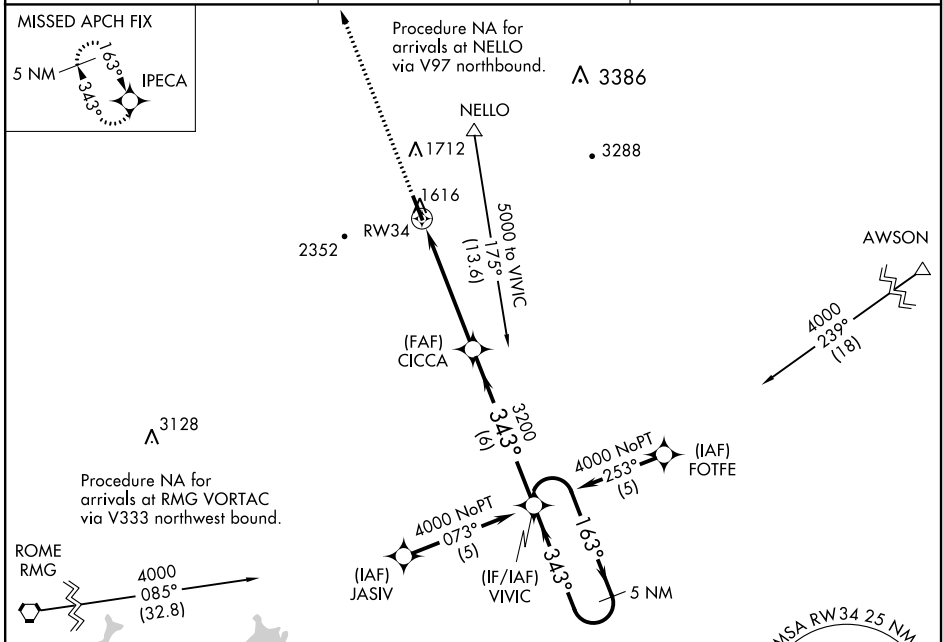
RNAV (GPS) RWY 34

PICKENS COUNTY (JZP)

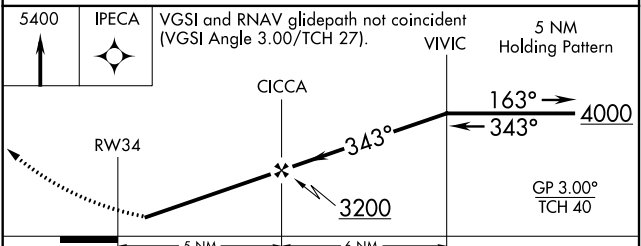
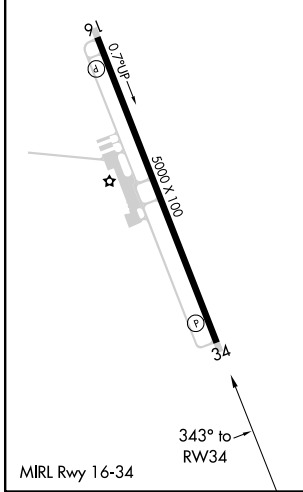
NA DME/DME RNP-0.3 NA. Visibility reduction by helicopters NA. If local altimeter setting not received, use Cobb County Intl-McCollum Fld altimeter setting and increase all LPV DAs to 1922/MDAs 140 feet.

MISSED APPROACH: Climb to 5400 direct IPECA and hold, continue climb-in-hold to 5400.

AWOS-3PT 118.55	ATLANTA CENTER 133.1 342.425	UNICOM 122.725 (CTAF)
---------------------------	--	---------------------------------



ELEV 1535	TDZE 1535
-----------	-----------



CATEGORY	A	B	C	D
LPV DA		1789-1 254 (300-1)		NA
LNAV MDA		1880-1 345 (400-1)		NA
CIRCLING	1960-1 425 (500-1)	2160-1 625 (700-1)	2360-2½ 825 (900-2½)	NA

SE-4, 07 OCT 2021 to 04 NOV 2021

SE-4, 07 OCT 2021 to 04 NOV 2021