

WAAS CH <b>49206</b> <b>W26A</b>	APP CRS <b>254°</b>	Rwy Idg TDZE <b>647</b> Apt Elev <b>647</b>	<b>5003</b>
--	------------------------	---	-------------

# RNAV (GPS) RWY 26

MASON COUNTY (LDM)

RNP APCH-GPS.

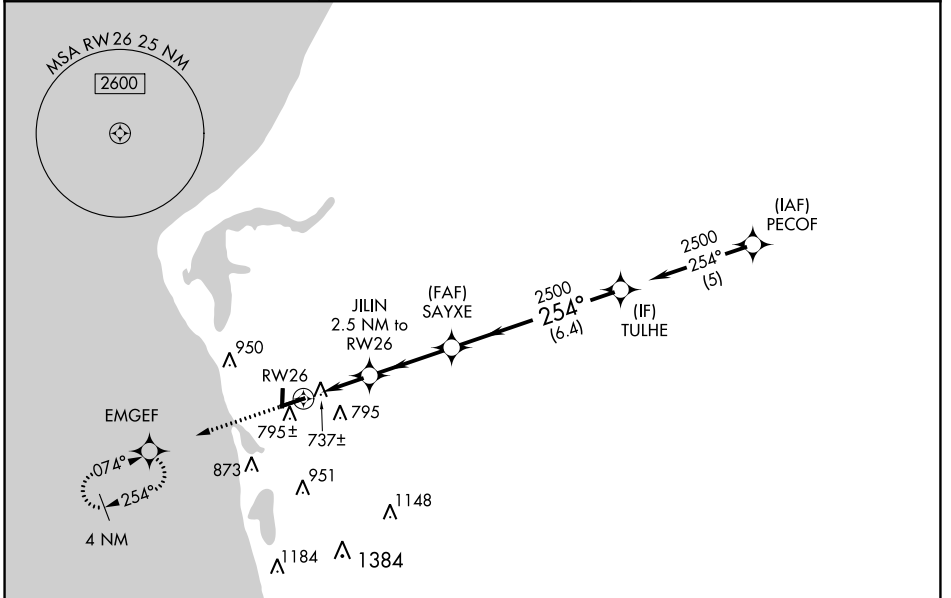
**⚠** Circling Rwy 1, 19 NA at night. Rwy 26 helicopter visibility reduction below ¾ SM NA. For uncompensated Baro-VNAV systems, LNAV/VNAV NA below -16°C or above 54°C.

**MISSED APPROACH:**  
Climb to 2500 direct EMGEF and hold.

AWOS-3  
**119,925**

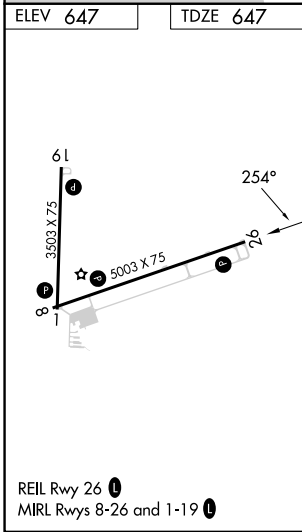
MINNEAPOLIS CENTER  
**120.85 322.35**

UNICOM  
**123.0 (CTAF) 0**



EC-1, 22 FEB 2024 to 21 MAR 2024

EC-1, 22 FEB 2024 to 21 MAR 2024



2500	EMGEF	VGSI and RNAV glidepath not coincident (VGSI Angle 3.00/TCH 25).			
		JILIN 2.5 NM to RW26	SAYXE 2500	TULHE	
		1.1 NM to RW26	254°	2500	GP 3.00° TCH 40
		1.1	1.4 NM	3.1 NM	6.4 NM
CATEGORY		A	B	C	D
LPV DA			975-1	328 (400-1)	
LNAV/VNAV DA			1020-1	373 (400-1)	
LNAV MDA			1020-1	373 (400-1)	
CIRCLING		1160-1 513 (600-1)	1200-1 553 (600-1)	1260-1¾ 613 (700-1¾)	1460-2¾ 813 (900-2¾)

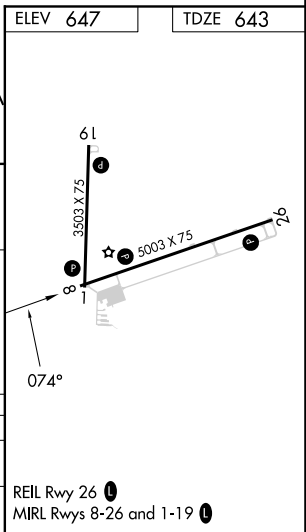
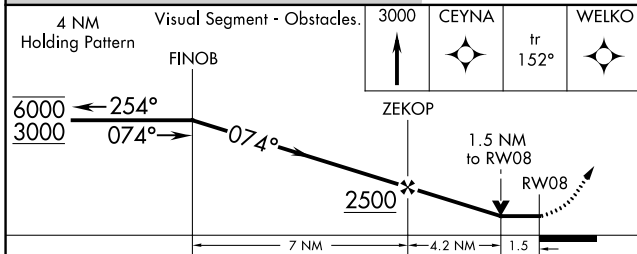
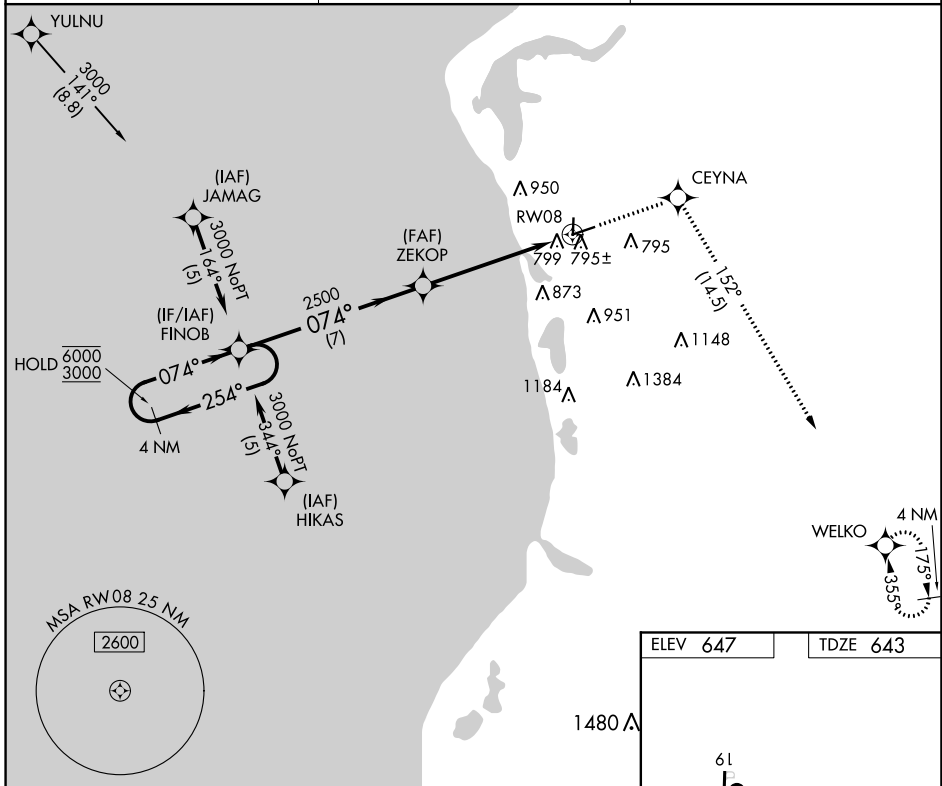
APP CRS	Rwy Idg	<b>5003</b>
<b>074°</b>	TDZE	<b>643</b>
	Apt Elev	<b>647</b>

# RNAV (GPS) RWY 8

MASON COUNTY (LDM)

RNP APCH-GPS.	MISSED APPROACH: Climb to 3000 direct CEYNA and on track 152° to WELKO and hold.
<p>▼ Circling Rwy 1, 19 NA at night.</p> <p>▲ Rwy 8 helicopter visibility reduction below ¾ SM NA.</p>	

AWOS-3 <b>119.925</b>	MINNEAPOLIS CENTER <b>120.85 322.35</b>	UNICOM <b>123.0 (CTAF) 0</b>
--------------------------	--	---------------------------------



CATEGORY	A	B	C	D
LNVA MDA	1140-1	497 (500-1)	1140-1 $\frac{3}{8}$	497 (500-1 $\frac{3}{8}$ )
CIRCLING	1160-1 513 (600-1)	1200-1 553 (600-1)	1260-1 $\frac{3}{4}$ 613 (700-1 $\frac{3}{4}$ )	1460-2 $\frac{3}{4}$ 813 (900-2 $\frac{3}{4}$ )

EC-1, 22 FEB 2024 to 21 MAR 2024

EC-1, 22 FEB 2024 to 21 MAR 2024