

LITTLE ROCK, ARKANSAS

AL-233 (FAA)

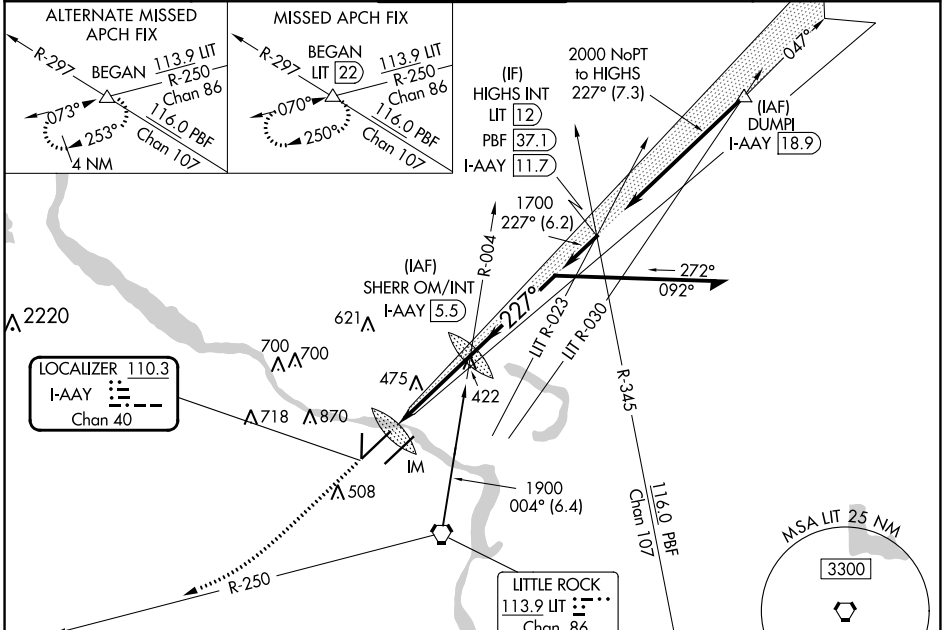
23334

LOC/DME I-AAY 110.3 Chan 40	APP CRS 227°	Rwy Idg TDZE Apt Elev	8273 262 266
--	------------------------	-----------------------------	---

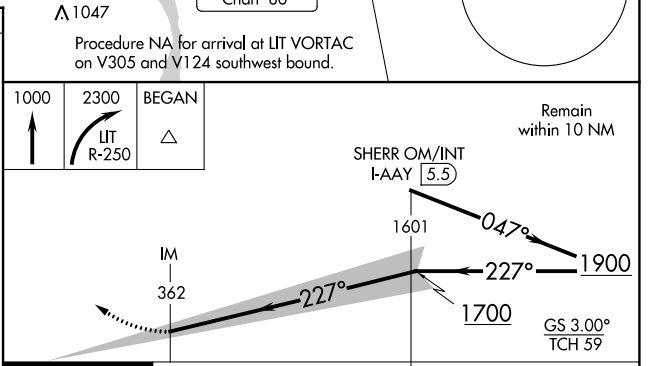
ILS RWY 22R (CAT II & III)

BILL AND HILLARY CLINTON NTL/ADAMS FLD (LIT)

D-ATIS 125.65		LITTLE ROCK APP CON 135.4 353.6		ADAMS TOWER 118.7 257.8		GND CON 121.9 339.8		CLNC DEL 118.95	
-------------------------	--	---	--	-----------------------------------	--	-------------------------------	--	---------------------------	--



ELEV 266	D	TDZE 262
----------	----------	----------



CATEGORY	A	B	C	D
S-ILS-22R	CAT II RA 128/12 100 DA 362			
S-ILS-22R	CAT III RVR 06			

MIRL Rwy 18-36
 HIRL Rwys 4R-22L and 4L-22R
 TDZ/CL Rwys 4L, 4R, 22L and 22R

CATEGORY II & III ILS - SPECIAL AIRCREW & AIRCRAFT CERTIFICATION REQUIRED

LITTLE ROCK, ARKANSAS
 Amdt 3B 15JUN23

BILL AND HILLARY CLINTON NTL/ADAMS FLD (LIT)
 34°44'N-92°13'W
ILS RWY 22R (CAT II & III)

SC-1, 22 FEB 2024 to 21 MAR 2024

SC-1, 22 FEB 2024 to 21 MAR 2024

LITTLE ROCK, ARKANSAS

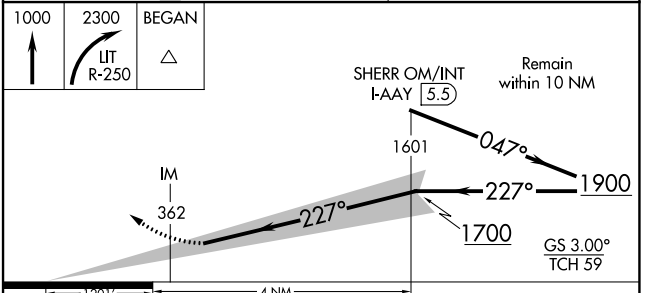
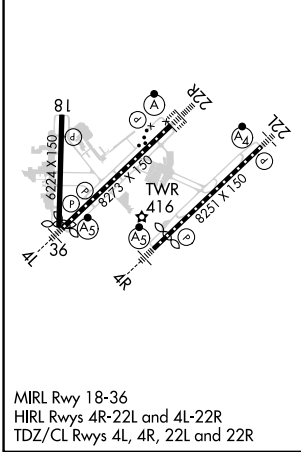
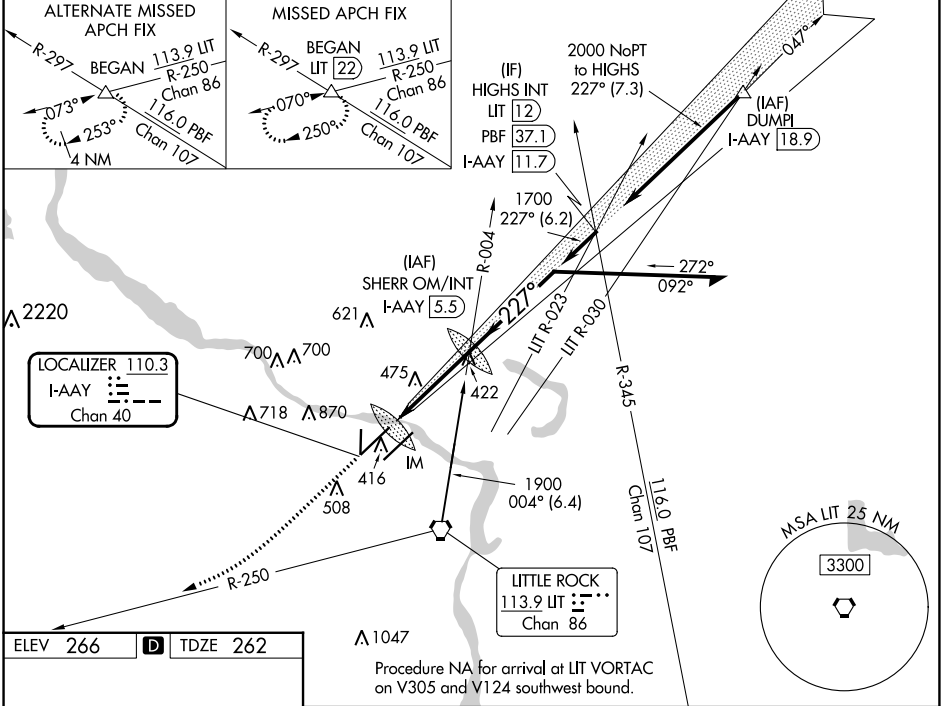
AL-233 (FAA)

23334

LOC/DME I-AAY 110.3 Chan 40	APP CRS 227°	Rwy Idg TDZE Apt Elev	8273 262 266
--	------------------------	-----------------------------	---

ILS RWY 22R (SA CAT I)
BILL AND HILLARY CLINTON NTL/ADAMS FLD (LIT)

DME required.		ALSF-2	MISSED APPROACH: Climb to 1000 then climbing right turn to 2300 on LIT VORTAC R-250 to BEGAN INT/LIT 22 DME and hold.	
<p>Simultaneous approach authorized with Rwy 22L. Requires specific OPSPEC, MSPEC, or LOA approval and use of HUD to DA.</p>				
D-ATIS 125.65	LITTLE ROCK APP CON 135.4 353.6	ADAMS TOWER 118.7 257.8	GND CON 121.9 339.8	CLNC DEL 118.95



ELEV 266	D	TDZE 262
1000	2300	BEGAN
↑	↪ LIT R-250	△

SHERR OM/INT I-AAY 5.5	1601	047°	1900	
IM	362	227°	1700	
		4 NM	GS 3.00° TCH 59	
CATEGORY	A	B	C	D
S-ILS-22R	RA 182/14		150 DA 412	

SA CATEGORY I ILS - SPECIAL AIRCREW & AIRCRAFT CERTIFICATION REQUIRED

LITTLE ROCK, ARKANSAS
Amdt 3B 15JUN23

BILL AND HILLARY CLINTON NTL/ADAMS FLD (LIT)
34°44'N-92°13'W
ILS RWY 22R (SA CAT I)

SC-1, 22 FEB 2024 to 21 MAR 2024

SC-1, 22 FEB 2024 to 21 MAR 2024

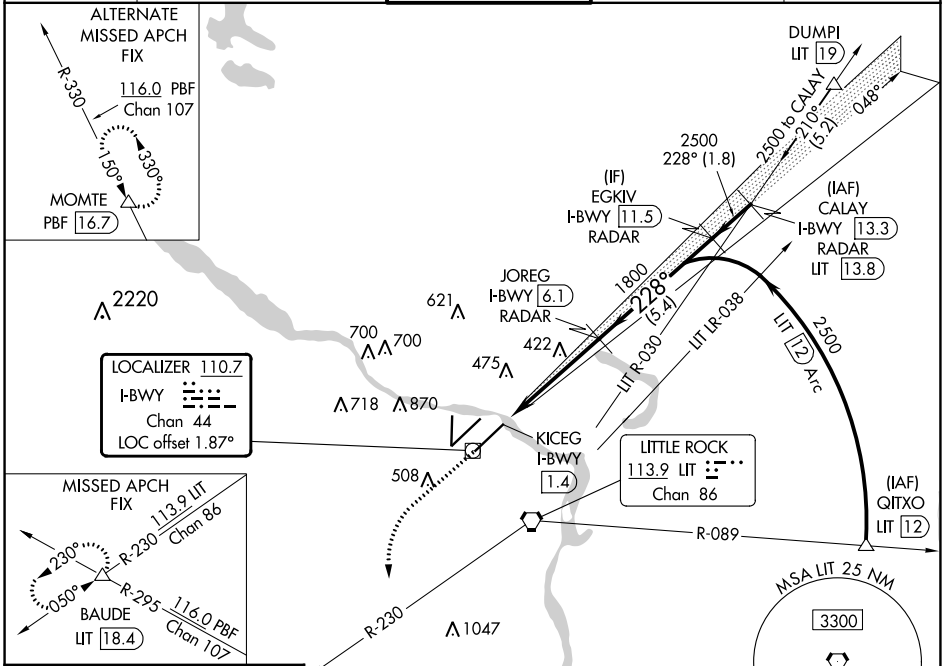
LOC/DME I-BWY	APP CRS	Rwy Idg	7200
110.7	228°	TDZE	260
Chan 44		Apt Elev	266

ILS or LOC RWY 22L

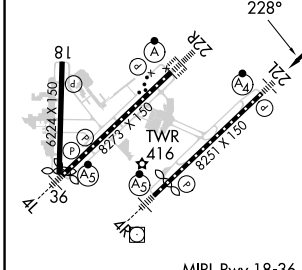
BILL AND HILLARY CLINTON NTL/ADAMS FLD (LIT)

D-ATIS		LITTLE ROCK APP CON		ADAMS TOWER		GND CON		CLNC DEL	
125.65		135.4 353.6		118.7 257.8		121.9 339.8		118.95	

MALSF MISSED APPROACH: Climb to 800 then climbing left turn to 3000 on heading 170° and LIT VORTAC R-230 to BAUDE INT/LIT 18.4 DME and hold.



ELEV 266	D	TDZE 260
----------	----------	----------



*LOC only.	KICEG I-BWY 1.4	*I-BWY 2.4	JOREG I-BWY 6.1 RADAR	EKGIV I-BWY 11.5 RADAR	CALAY I-BWY 13.3 RADAR
	1 NM	3.6 NM	5.4 NM	1.8 NM	

MIRL Rwy 18-36	HIRL Rwys 4R-22L and 4L-22R	TDZ/CL Rws 4L, 4R, 22L and 22R	FAF to MAP 4.6 NM		
Knots	60	90	120	150	180
Min:Sec	4:36	3:04	2:18	1:50	1:32

SC-1, 22 FEB 2024 to 21 MAR 2024

SC-1, 22 FEB 2024 to 21 MAR 2024

LOC/DME I-AAY 110.3 Chan 40	APP CRS 227°	Rwy Idg TDZE Apt Elev	8273 262 266
--	------------------------	-----------------------------	---

ILS or LOC RWY 22R

BILL AND HILLARY CLINTON NTL/ADAMS FLD (LIT)

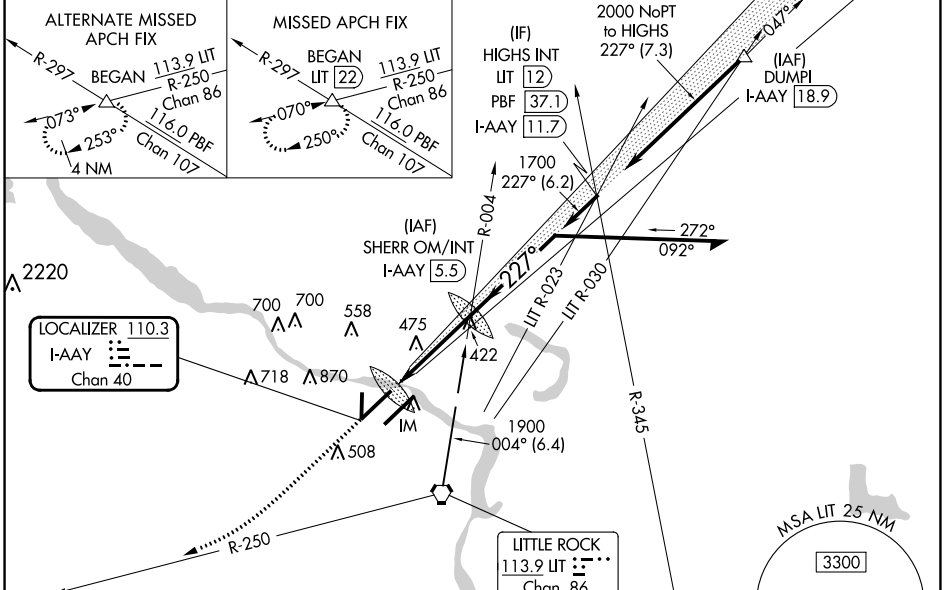
DME required.

Simultaneous approach authorized with Rwy 22L.
For inop ALS, increase S-LOC Cat C/D visibility to RVR 6000.

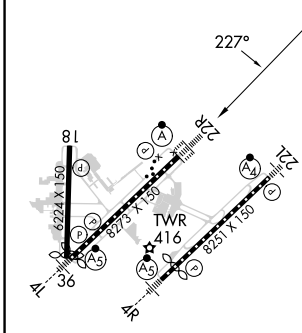
ALS-2

MISSED APPROACH: Climb to 1000 then climbing right turn to 2300 on LIT VORTAC R-250 to BEGAN INT/LIT 22 DME and hold.

D-ATIS 125.65	LITTLE ROCK APP CON 135.4 353.6	ADAMS TOWER 118.7 257.8	GND CON 121.9 339.8	CLNC DEL 118.95
-------------------------	---	-----------------------------------	-------------------------------	---------------------------



ELEV 266	D	TDZE 262
----------	----------	----------



Procedure NA for arrival at LIT VORTAC on V305 and V124 southwest bound.

1000	2300	BEGAN	SHERR OM/INT	Remain within 10 NM
↑	LIT R-250	△	I-AAY 5.5	
IM		I-AAY 1.5	I-AAY 2.5	1601
0.1		1 NM	2.9 NM	1700
				1900
				GS 3.00° TCH 59

MIRL Rwy 18-36
HIRL Rws 4R-22L and 4L-22R
TDZ/CL Rws 4L, 4R, 22L and 22R
FAF to MAP 4 NM

Knots	60	90	120	150	180
Min:Sec	4:00	2:40	2:00	1:36	1:20

CATEGORY	A	B	C	D
S-ILS 22R	462/18 200 (200-½)			
S-LOC 22R	680/24	418 (500-½)	680/40	418 (500-¾)
C CIRCLING	820-1 554 (600-1)	1000-1 734 (800-1)	1180-2¾ 914 (1000-2¾)	1180-3 914 (1000-3)

SC-1, 22 FEB 2024 to 21 MAR 2024


SC-1, 22 FEB 2024 to 21 MAR 2024

LOC/DME I-LIT 110.3 Chan 40	APP CRS 047°	Rwy Idg 7976 TDZE 258 Apt Elev 266
--	------------------------	---

ILS or LOC RWY 4L

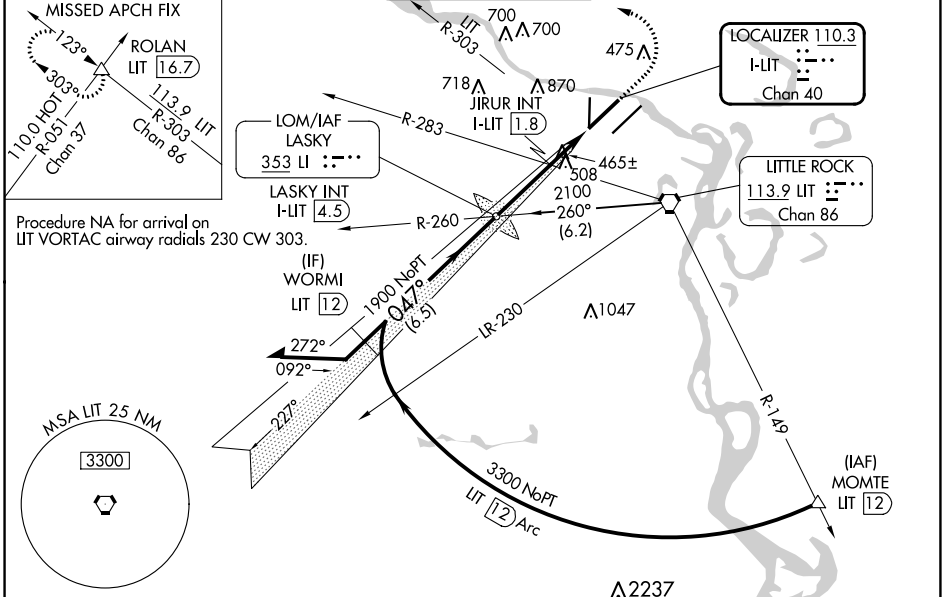
BILL AND HILLARY CLINTON NTL/ADAMS FLD (LIT)

⚠ Simultaneous approach authorized. Rwy 4L helicopter visibility reduction below RVR 4000 NA. Inop table does not apply to S-ILS 4L all Cats. LOC minimums: For inop ALS, increase S-LOC 4L Cats A/B visibility to 1 SM and Cats C/D visibility to 2 SM. JIRUR fix minimums: For inop ALS, increase S-LOC 4L Cats A/B visibility to 1 SM and Cats C/D visibility to 1½ SM.

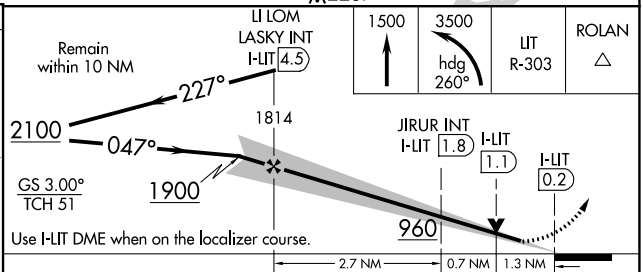
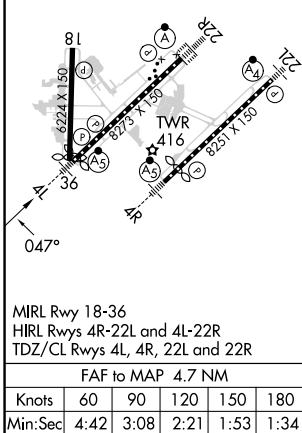
MALSR 

MISSED APPROACH: Climb to 1500 then climbing left turn to 3500 on heading 260° and on LT VORTAC R-303 to ROLAN INT/LIT 16.7 DME and hold.

D-ATIS 125.65	LITTLE ROCK APP CON 135.4 353.6	ADAMS TOWER 118.7 257.8	GND CON 121.9 339.8	CLNC DEL 118.95
-------------------------	---	-----------------------------------	-------------------------------	---------------------------



ELEV 266	D	TDZE 258
----------	----------	----------



CATEGORY	A	B	C	D
S-ILS 4L	508/40 250 (300-¾)			
S-LOC 4L	960/40	702 (700-¾)	960-1½	702 (700-1½)
C CIRCLING	960-1 694 (700-1)	1000-1 734 (800-1)	1180-2¾ 914 (1000-2¾)	1180-3 914 (1000-3)
JIRUR FIX MINIMUMS (DUAL VOR RECEIVERS OR DME REQUIRED)				
S-LOC 4L	720/40	462 (500-¾)	720/50	462 (500-1)
C CIRCLING	820-1 554 (600-1)	1000-1 734 (800-1)	1180-2¾ 914 (1000-2¾)	1180-3 914 (1000-3)

SC-1, 22 FEB 2024 to 21 MAR 2024

SC-1, 22 FEB 2024 to 21 MAR 2024

LOC/DME I-CNL 111.3 Chan 50	APP CRS 047°	Rwy Ldg 7200 TDZE 260 Apt Elev 266
--	------------------------	---

ILS or LOC RWY 4R

BILL AND HILLARY CLINTON NTL/ADAMS FLD (LIT)

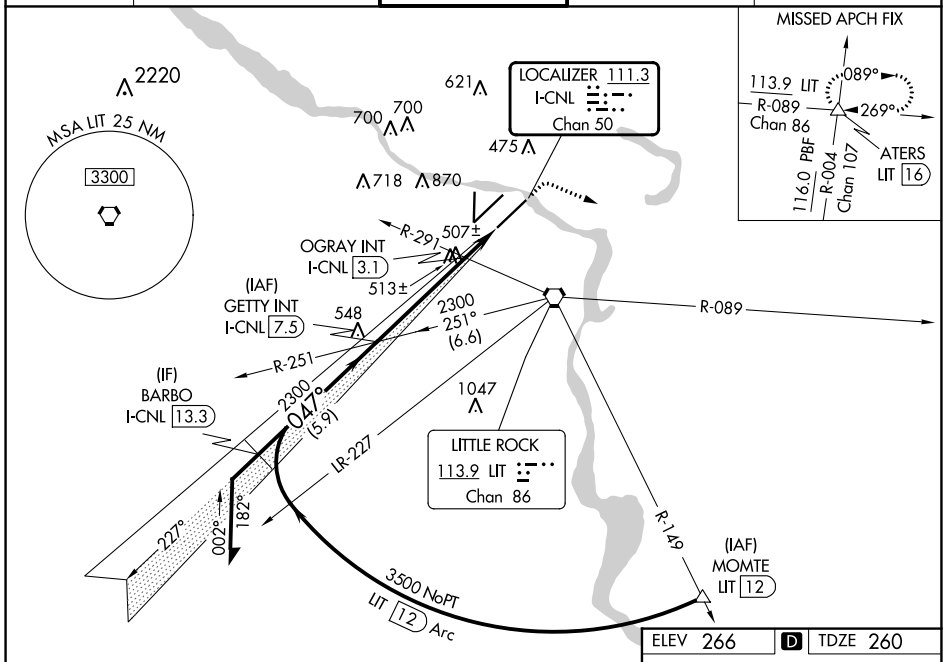
Rwy 4R helicopter visibility reduction below RVR 4000 NA. Simultaneous approach authorized. For inop ALS, increase S-ILS 4R all Cats visibility to RVR 4500. For inop ALS, increase S-LOC 4R Cats A/B visibility to RVR 5500 and Cats C/D visibility to 1 1/4 SM. OGRAY Fix Minimums: For inop ALS, increase S-LOC 4R Cats A/B visibility to RVR 5500 and Cats C/D to 1 1/4 SM.

MALSR



MISSED APPROACH: Climb to 800 then climbing right turn to 4000 on heading 110° and LIT VORTAC R-089 to ATERS INT/LIT 16 DME and hold.

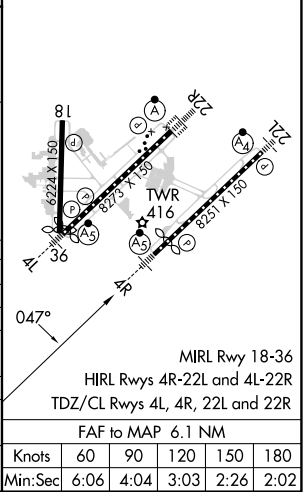
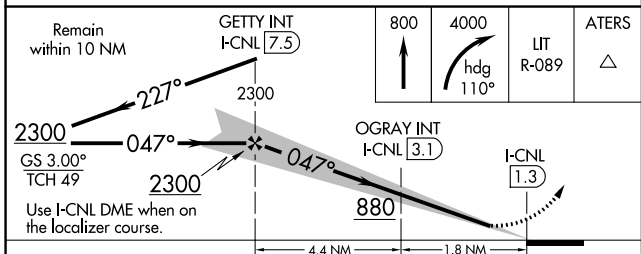
D-ATIS 125.65	LITTLE ROCK APP CON 135.4 353.6	ADAMS TOWER 118.7 257.8	GND CON 121.9 339.8	CLNC DEL 118.95
-------------------------	---	-----------------------------------	-------------------------------	---------------------------



SC-1, 22 FEB 2024 to 21 MAR 2024

SC-1, 22 FEB 2024 to 21 MAR 2024

ELEV 266	D TDZE 260
----------	-------------------



CATEGORY	A	B	C	D
S-ILS 4R		523/40	263 (300-3/4)	
S-LOC 4R	880/40	620 (700-3/4)	880-1 3/8	620 (700-1 1/4)
C CIRCLING	880-1 614 (700-1)	1000-1 734 (800-1)	1180-2 3/4 914 (1000-2 3/4)	1180-3 914 (1000-3)
OGRAY (DUAL VOR RECEIVERS OR DME REQUIRED)				
S-LOC 4R	780/40	520 (600-3/4)	780/55	520 (600-1)
C CIRCLING	820-1 554 (600-1)	1000-1 734 (800-1)	1180-2 3/4 914 (1000-2 3/4)	1180-3 914 (1000-3)

MIRL Rwy 18-36					
HIRL Rwys 4R-22L and 4L-22R					
TDZ/CL Rwys 4L, 4R, 22L and 22R					
FAF to MAP 6.1 NM					
Knots	60	90	120	150	180
Min:Sec	6:06	4:04	3:03	2:26	2:02

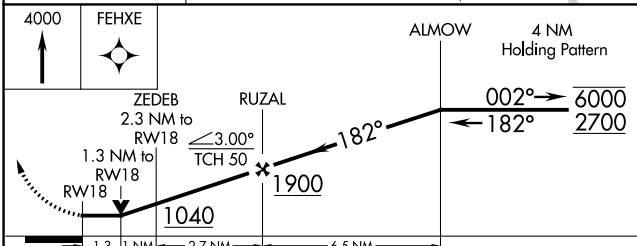
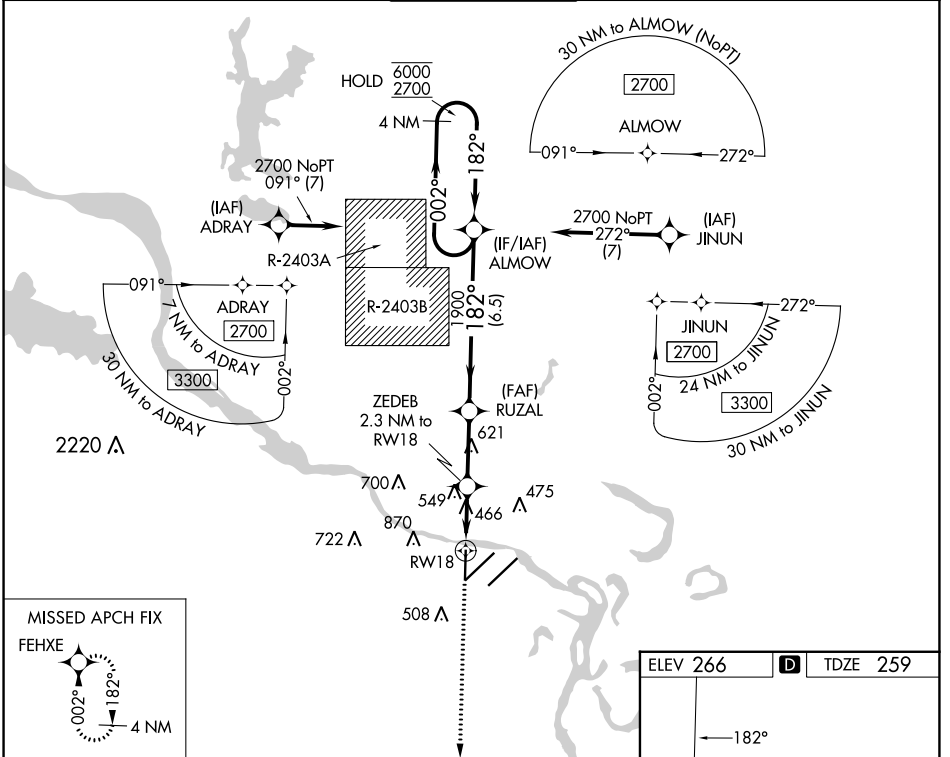
WAAS CH 45624 W18A	APP CRS 182°	Rwy Idg TDZE Apt Elev	6060 259 266
--	------------------------	-----------------------------	---

RNAV (GPS) RWY 18

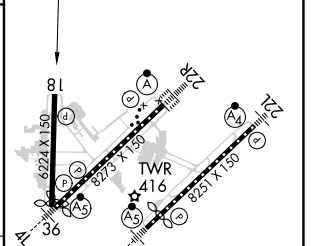
BILL AND HILLARY CLINTON NTL/ADAMS FLD (LIT)

RNP APCH - GPS.	MISSED APPROACH: Climb to 4000 direct FEHXE and hold, continue climb-in-hold to 4000.
▼ Rwy 18 helicopter visibility reduction below 3/4 SM NA. Procedure NA when restricted	
▲ areas R-2403A/B in effect.	

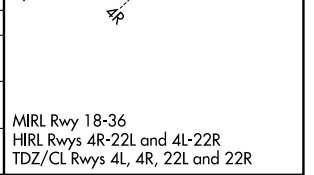
D-ATIS 125.65	LITTLE ROCK APP CON 135.4 353.6	ADAMS TOWER 118.7 257.8	GND CON 121.9 339.8	CLNC DEL 118.95
-------------------------	---	-----------------------------------	-------------------------------	---------------------------



ELEV 266	D	TDZE 259
----------	----------	----------



CATEGORY	A	B	C	D
LP MDA	720-1 461 (500-1)		720-1 3/8 461 (500-1 3/8)	
LNAV MDA	820-1 561 (600-1)		820-1 5/8 561 (600-1 5/8)	
C CIRCLING	820-1 554 (600-1)	1000-1 734 (800-1)	1180-2 3/4 914 (1000-2 3/4)	1180-3 914 (1000-3)



SC-1, 22 FEB 2024 to 21 MAR 2024

SC-1, 22 FEB 2024 to 21 MAR 2024

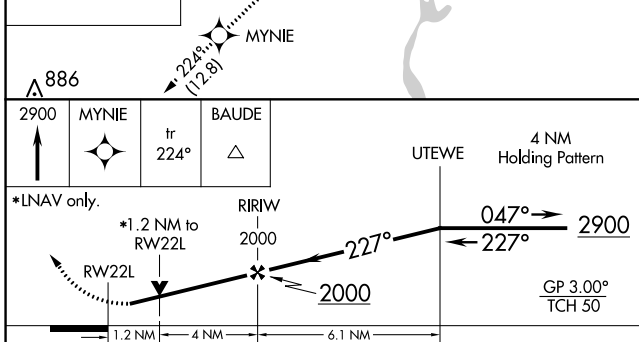
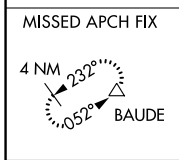
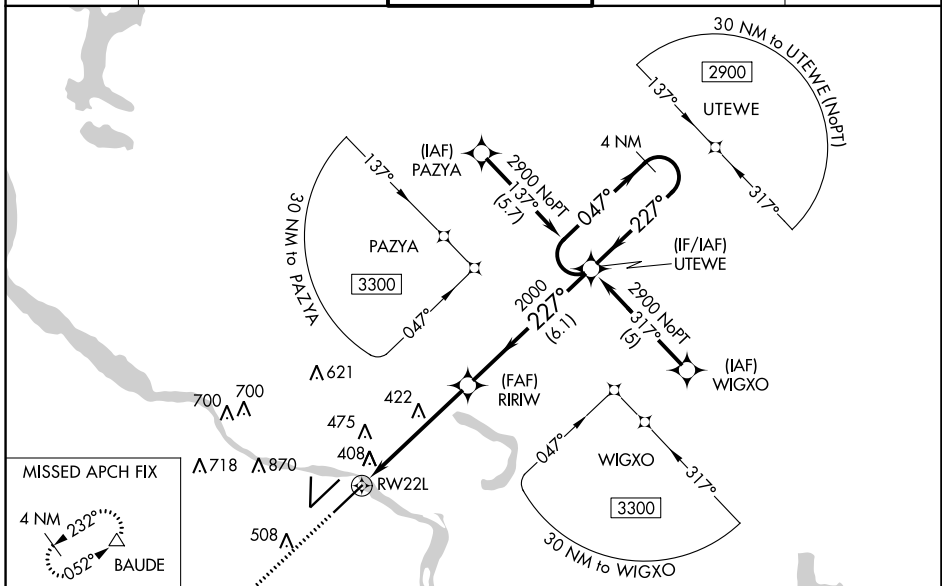
WAAS CH 42811 W22A	APP CRS 227°	Rwy Idg 7200 TDZE 260 Apt Elev 266
--	------------------------	---

RNAV (GPS) RWY 22L

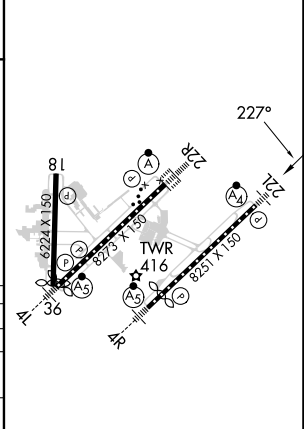
BILL AND HILLARY CLINTON NTL/ADAMS FLD (LIT)

RNP APCH. For uncompensated Baro-VNAV systems, LNAV/VNAV NA below -15°C or above 48°C. ▼ Rwy 22L helicopter visibility reduction below 3/4 SM NA. Inop table does not apply to LPV, LNAV/VNAV or LNAV Cat C and D. For inop ALS, increase LNAV Cat A and B visibility to RVR 5000. Simultaneous approach authorized. LNAV procedure NA during simultaneous operations. Use of FD or AP required during simultaneous operations.	MALSF 	MISSED APPROACH: Climb to 2900 direct MYNIE and on track 224° to BAUDE and hold.
---	-----------	---

D-ATIS 125.65	LITTLE ROCK APP CON 135.4 353.6	ADAMS TOWER 118.7 257.8	GND CON 121.9 339.8	CLNC DEL 118.95
-------------------------	---	-----------------------------------	-------------------------------	---------------------------



ELEV 266	D	TDZE 260
----------	----------	----------



CATEGORY	A	B	C	D
LPV DA		543/50	283 (300-1)	
LNAV/VNAV DA		774-1 3/4	514 (600-1 3/4)	
LNAV MDA	680/40	420 (500-3/4)	680/60	420 (500-1/4)
C CIRCLING	820-1 554 (600-1)	1000-1 734 (800-1)	1180-2 3/4 914 (1000-2 3/4)	1180-3 914 (1000-3)

MIRL Rwy 18-36
HIRL Rwy 4R-22L and 4L-22R
TDZ/CL Rwy 4L, 4R, 22L and 22R

RNAV (GPS) RWY 22L

SC-1, 22 FEB 2024 to 21 MAR 2024

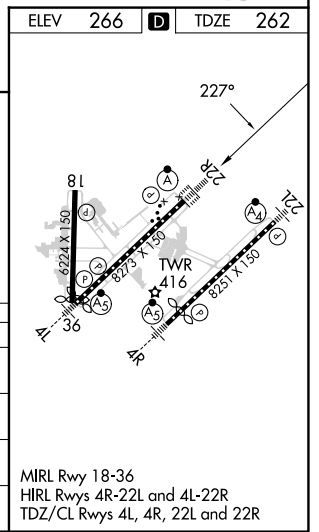
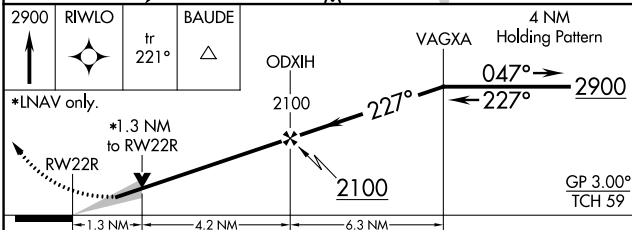
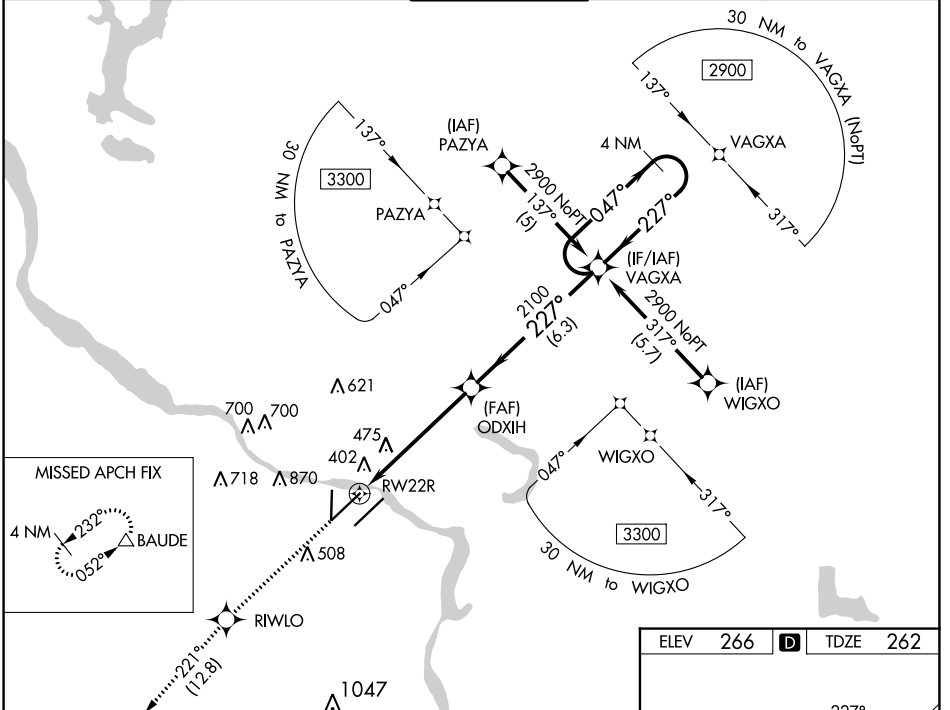
SC-1, 22 FEB 2024 to 21 MAR 2024

WAAS CH 93811 W22B	APP CRS 227°	Rwy Idg TDZE Apt Elev	8273 262 266
--	------------------------	-----------------------------	---

RNAV (GPS) RWY 22R

BILL AND HILLARY CLINTON NTL/ADAMS FLD (LIT)

RNP APCH.		ALSF-2	MISSED APPROACH: Climb to 2900 direct RIWLO and on track 221° to BAUDE and hold.	
For uncompensated Baro-VNAV systems, LNAV/VNAV NA below -1.5°C or above 48°C.				
D-ATIS 125.65	LITTLE ROCK APP CON 135.4 353.6	ADAMS TOWER 118.7 257.8	GND CON 121.9 339.8	CLNC DEL 118.95



CATEGORY	A	B	C	D
LPV DA		462/18	200 (200-½)	
LNAV/VNAV DA		727/50	465 (500-1)	
LNAV MDA	740/24	478 (500-½)	740/50	478 (500-1)
C CIRCLING	820-1 554 (600-1)	1000-1 734 (800-1)	1180-2¾ 914 (1000-2¾)	1180-3 914 (1000-3)

MIRL Rwy 18-36
HIRL Rwy 4R-22L and 4L-22R
TDZ/CL Rwy 4L, 4R, 22L and 22R

SC-1, 22 FEB 2024 to 21 MAR 2024

SC-1, 22 FEB 2024 to 21 MAR 2024

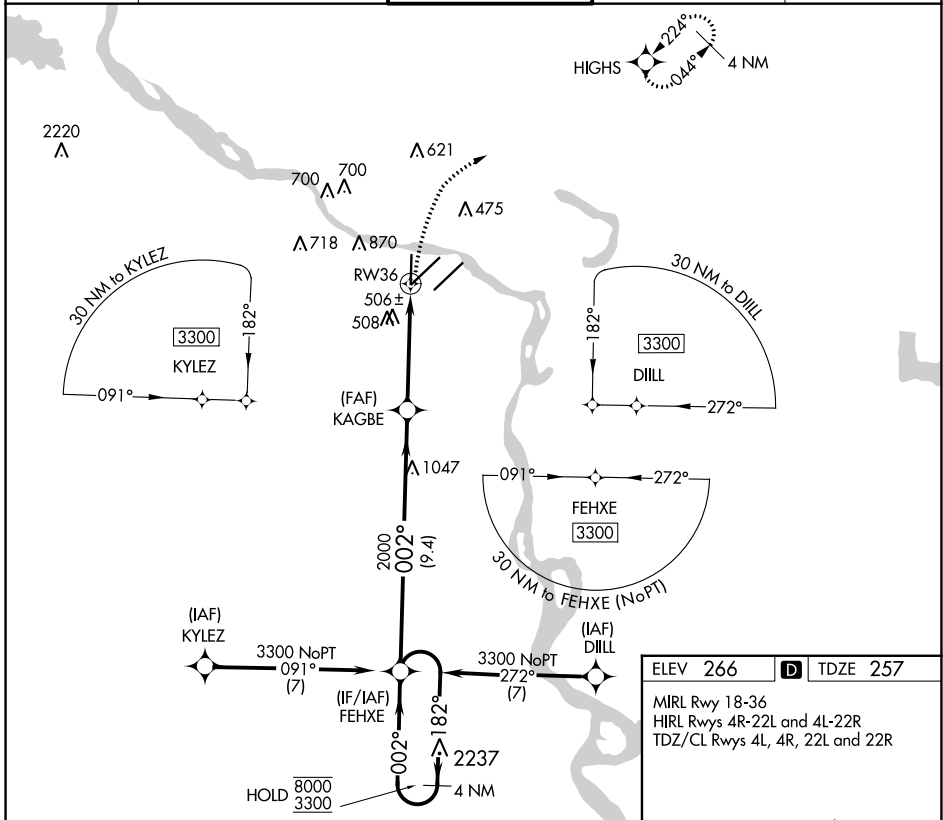
APP CRS	Rwy Idg	6060
002°	TDZE	257
	Apt Elev	266

RNAV (GPS) RWY 36

BILL AND HILLARY CLINTON NTL/ADAMS FLD (LIT)

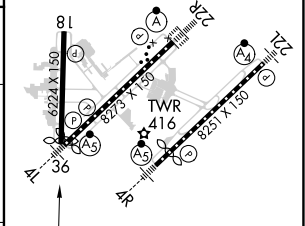
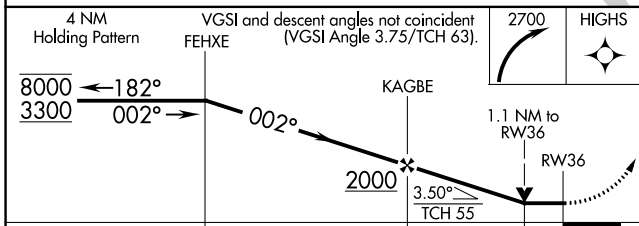
RNP APCH - GPS.		MISSED APPROACH: Climbing right turn to 2700 direct HIGHS and hold.		
Rwy 36 helicopter visibility reduction below 3/4 SM NA.				

D-ATIS	LITTLE ROCK APP CON	ADAMS TOWER	GND CON	CLNC DEL
125.65	135.4 353.6	118.7 257.8	121.9 339.8	118.95



ELEV 266	D TDZE 257
----------	-------------------

MIRL Rwy 18-36
 HIRL Rwys 4R-22L and 4L-22R
 TDZ/CL Rwys 4L, 4R, 22L and 22R



CATEGORY	A	B	C	D
LNVA MDA	760-1	503 (500-1)	760-1 3/8	503 (500-1 3/8)
C CIRCLING	820-1 554 (600-1)	1000-1 734 (800-1)	1180-2 3/4 914 (1000-2 3/4)	1180-3 914 (1000-3)

RNAV (GPS) RWY 36

SC-1, 22 FEB 2024 to 21 MAR 2024

SC-1, 22 FEB 2024 to 21 MAR 2024

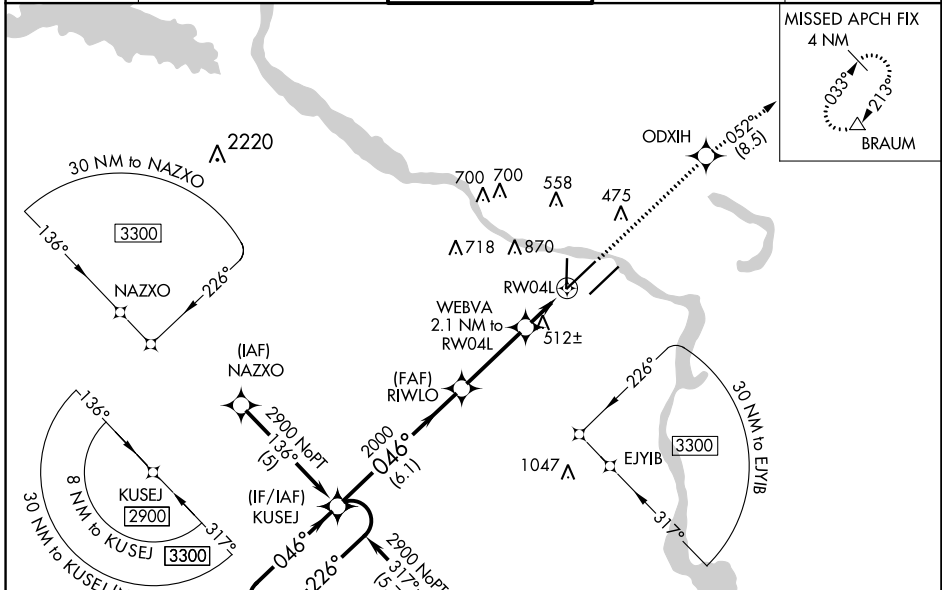
WAAS CH 90411 W04A	APP CRS 046°	Rwy Idg 7976 TDZE 258 Apt Elev 266
--	------------------------	---

RNAV (GPS) RWY 4L

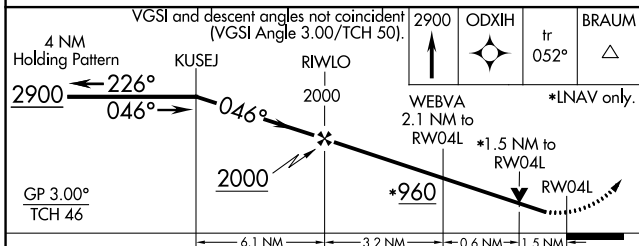
BILL AND HILLARY CLINTON NTL/ADAMS FLD (LIT)

RNP APCH. For uncompensated Baro-VNAV systems, LNAV/VNAV NA below -15°C or above 48°C. Rwy 4L helicopter visibility reduction below 3/4 SM NA. For inop ALS, increase LNAV Cat A and B visibility to RVR 5000. Simultaneous approach authorized. LNAV procedure NA during simultaneous operations. Use of FD or AP required during simultaneous operations.	MALSR 	MISSED APPROACH: Climb to 2900 direct ODXIH and on track 052° to BRAUM and hold.
--	-----------	--

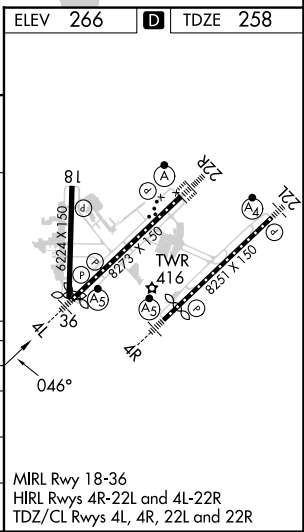
D-ATIS 125.65	LITTLE ROCK APP CON 135.4 353.6	ADAMS TOWER 118.7 257.8	GND CON 121.9 339.8	CLNC DEL 118.95
-------------------------	---	-----------------------------------	-------------------------------	---------------------------



ELEV 266	D TDZE 258
----------	-------------------



CATEGORY	A	B	C	D
LPV DA		544/40	286 (300-3/4)	
LNAV/VNAV DA		824-1 1/2	566 (600-1 1/2)	
LNAV MDA	780/40	522 (600-3/4)	780/55	522 (600-1)
C CIRCLING	820-1 554 (600-1)	1000-1 734 (800-1)	1180-2 3/4 914 (1000-2 3/4)	1180-3 914 (1000-3)



RNAV (GPS) RWY 4L

SC-1, 22 FEB 2024 to 21 MAR 2024

SC-1, 22 FEB 2024 to 21 MAR 2024

WAAS CH 70611 W04B	APP CRS 046°	Rwy Idg 7200 TDZE 260 Apt Elev 266
--	------------------------	---

RNAV (GPS) RWY 4R

BILL AND HILLARY CLINTON NTL/ADAMS FLD (LIT)

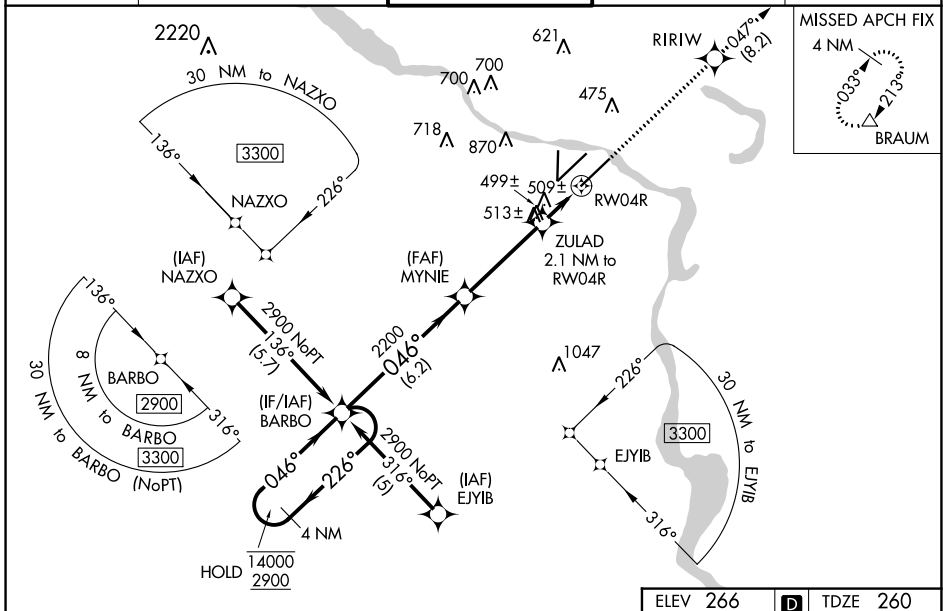
RNP APCH-GPS.

⚠ Rwy 4R helicopter visibility reduction below RVR 4000 NA. For uncompensated Baro-VNAV systems, LNAV/VNAV NA below -15°C or above 54°C. Simultaneous approach authorized. LNAV procedure NA during simultaneous operations. Use of FD or AP required during simultaneous operations. For inop ALS, increase LPV all Cats visibility to RVR 4500, LNAV/VNAV all Cats visibility to 1½ SM and LNAV Cat A/B visibility to RVR 5500 and Cat C/D to 1½ SM.

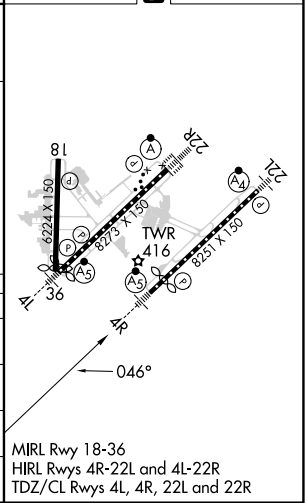
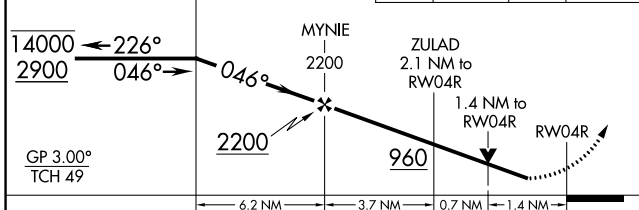
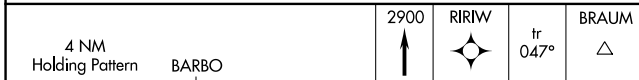


MISSED APPROACH:
Climb to 2900 direct RIRIW and on track 047° to BRAUM and hold.

D-ATIS 125.65	LITTLE ROCK APP CON 135.4 353.6	ADAMS TOWER 118.7 257.8	GND CON 121.9 339.8	CLNC DEL 118.95
-------------------------	---	-----------------------------------	-------------------------------	---------------------------



ELEV 266	D TDZE 260
----------	-------------------



CATEGORY	A	B	C	D
LPV DA		574/40	314 (400-¾)	
LNAV/VNAV DA		756/50	496 (500-1)	
LNAV MDA	760/40	500 (500-¾)	760/50	500 (500-1)
C CIRCLING	820-1 554 (600-1)	1000-1 734 (800-1)	1180-2¾ 914 (1000-2¾)	1180-3 914 (1000-3)

SC-1, 22 FEB 2024 to 21 MAR 2024

SC-1, 22 FEB 2024 to 21 MAR 2024

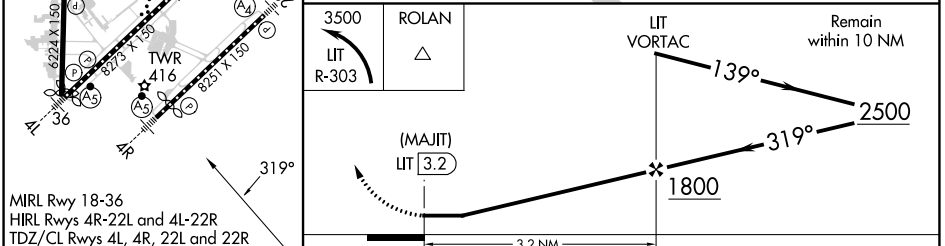
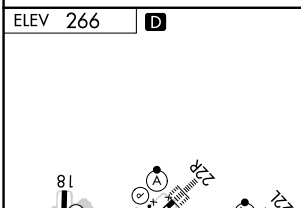
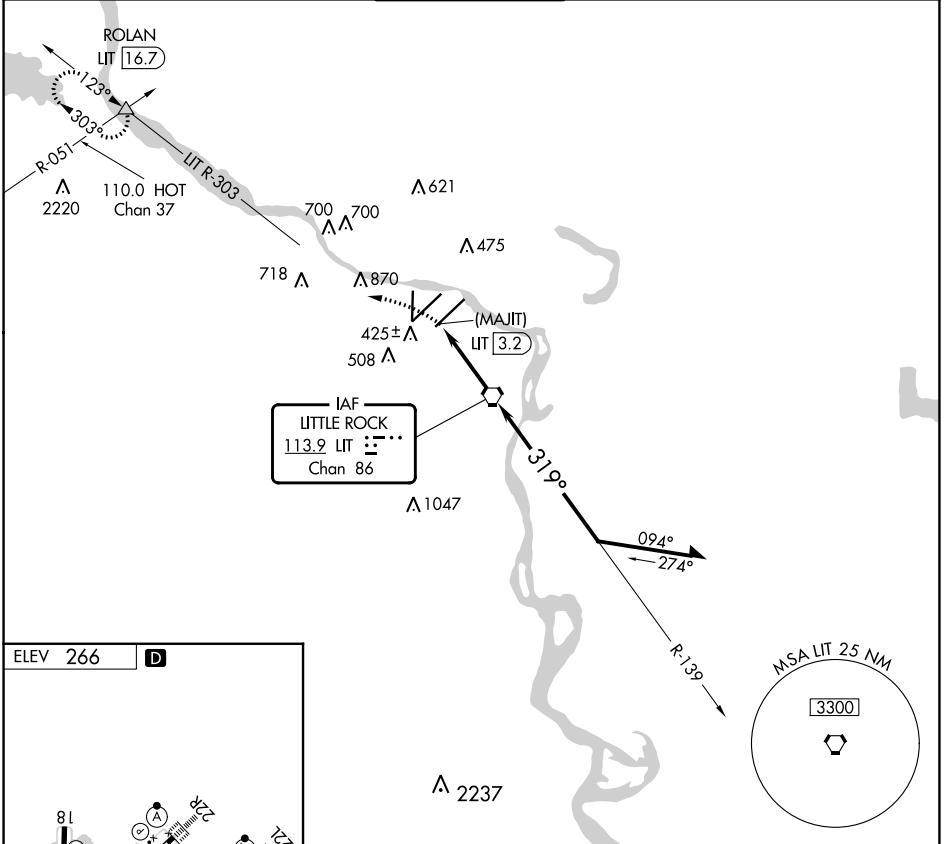
VORTAC LIT 113.9 Chan 86	APP CRS 319°	Rwy Idg TDZE Apt Elev	N/A N/A 266
--	------------------------	-----------------------------	--

VOR-A

BILL AND HILLARY CLINTON NTL/ADAMS FLD (LIT)

<p>▽ △</p>		<p>MISSED APPROACH: Climbing left turn to 3500 on LIT R-303 to ROLAN INT and hold.</p>		
------------------------------	--	--	--	--

D-ATIS 125.65	LITTLE ROCK APP CON 135.4 353.6	ADAMS TOWER 118.7 257.8	GND CON 121.9 339.8	CLNC DEL 118.95
-------------------------	---	-----------------------------------	-------------------------------	---------------------------



FAF to MAP 3.2 NM		CATEGORY	A	B	C	D
Knots	60 90 120 150 180	☑ CIRCLING	940-1 674 (700-1)	1000-1 734 (800-1)	1180-2¾ 914 (1000-2¾)	1180-3 914 (1000-3)
Min:Sec	3:12 2:08 1:36 1:17 1:04					

VOR-A

SC-1, 22 FEB 2024 to 21 MAR 2024

SC-1, 22 FEB 2024 to 21 MAR 2024