

WAAS CH 90419 W24A	APP CRS 245°	Rwy Idg TDZE Apt Elev	3700 295 302
--	------------------------	-----------------------------	---

RNAV (GPS) RWY 24

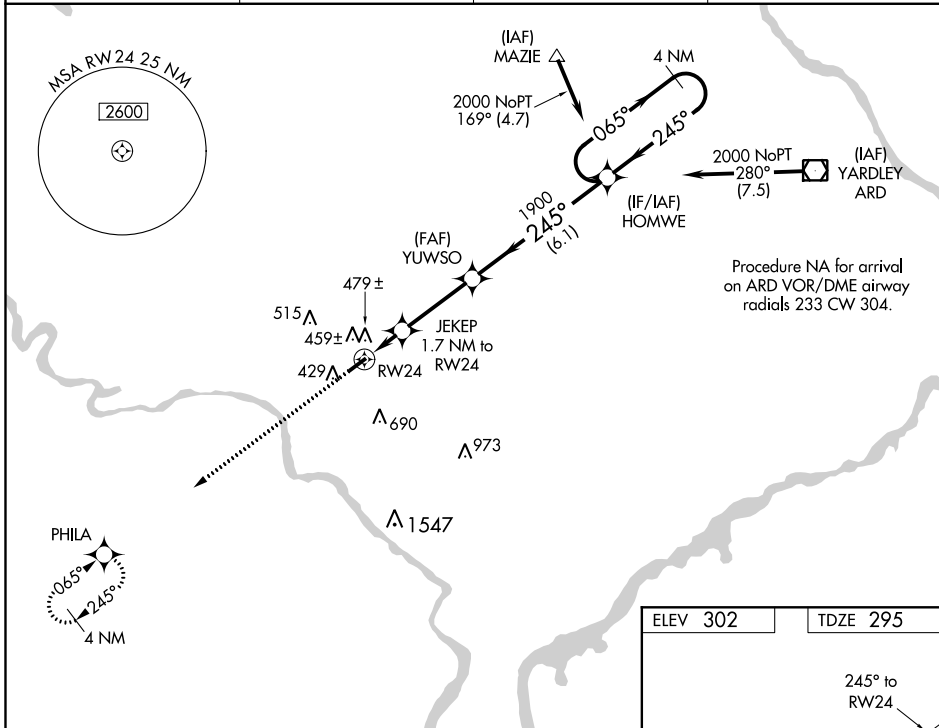
WINGS FIELD (LOM)

RNP APCH

▼ Baro-VNAV NA when using Pottstown altimeter setting. For uncompensated Baro-VNAV systems, LNAV/VNAV NA below -15°C (5°F) or above 54°C (130°F). When local altimeter setting not received, use Pottstown altimeter setting and increase all DA 35 feet and all MDA 40 feet. Rwy 24 helicopter visibility reduction below 3/4 SM NA.

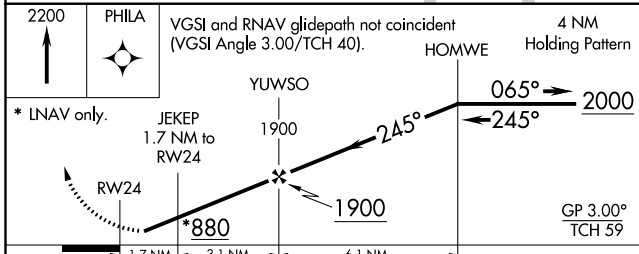
MISSED APPROACH: Climb to 2200 direct PHILA and hold.

AWOS-3 118.925	PHILADELPHIA APP CON 126.85 263.125	CLNC DEL 118.55	UNICOM 123.0 (CTAF) 0
--------------------------	---	---------------------------	---------------------------------

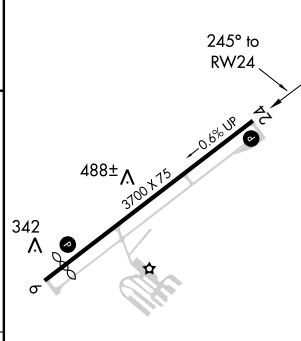


NE-4, 02 DEC 2021 to 30 DEC 2021

NE-4, 02 DEC 2021 to 30 DEC 2021



ELEV 302	TDZE 295
----------	----------



CATEGORY	A	B	C	D
LPV DA	567-1	272 (300-1)		NA
LNAV/VNAV DA	775-1 3/4	480 (500-1 3/4)		NA
LNAV MDA	740-1	445 (500-1)		NA
CIRCLING	780-1	478 (500-1)		NA

REIL Rwy 6 and 24 0

MIRL Rwy 6-24 0

WAAS CH 42719 W06A	APP CRS 065°	Rwy Idg TDZE Apt Elev	3523 301 302
--	------------------------	-----------------------------	---

RNAV (GPS) RWY 6

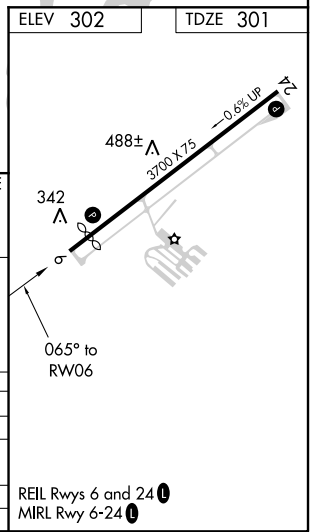
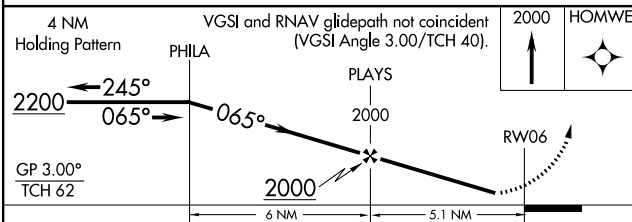
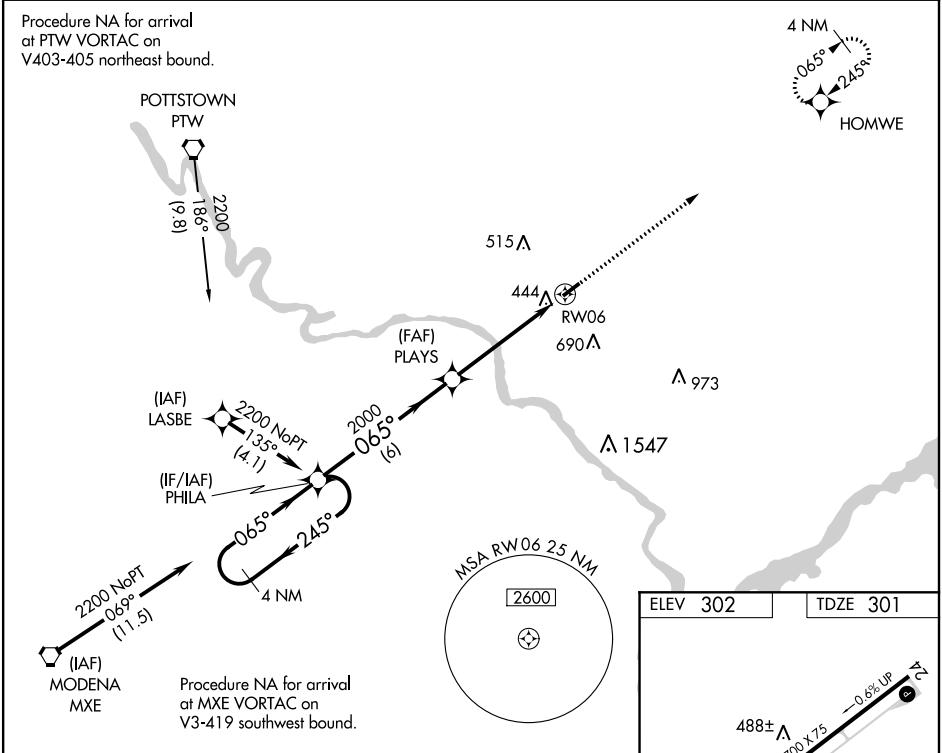
WINGS FIELD (LOM)

RNP APCH

▼ Baro-VNAV NA when using Pottstown altimeter setting. For uncompensated Baro-VNAV systems, LNAV/VNAV NA below -15°C (5°F) or above 54°C (130°F). When local altimeter setting not received, use Pottstown altimeter setting and increase all DA 35 feet and all MDA 40 feet; increase LPV Cats A/B visibility ¼ mile. Rwy 6 helicopter visibility reduction below ¾ SM NA.

MISSED APPROACH: Climb to 2000 direct HOMWE and hold.

AWOS-3 118.925	PHILADELPHIA APP CON 126.85 263.125	CLNC DEL 118.55	UNICOM 123.0 (CTAF) ①
--------------------------	---	---------------------------	--



CATEGORY	A	B	C	D
LPV DA	614-1	313 (400-1)		NA
LNAV/VNAV DA	788-1¾	487 (500-1¾)		NA
LNAV MDA	720-1	419 (500-1)		NA
CIRCLING	780-1	478 (500-1)		NA

NE-4, 02 DEC 2021 to 30 DEC 2021

NE-4, 02 DEC 2021 to 30 DEC 2021