

LOM LK	APP CRS	Rwy Idg	3125
414	348°	TDZE	546
		Apt Elev	546

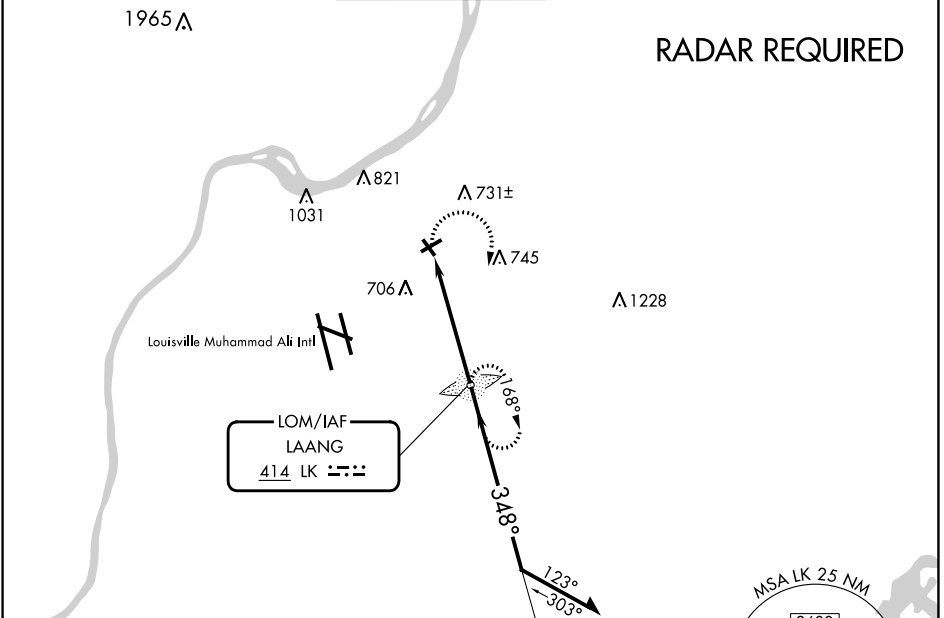
NDB RWY 33

BOWMAN FLD (LOU)

⚠ When local altimeter setting not received, use Louisville Muhammad Ali Intl altimeter setting. Rwy 33 helicopter visibility reduction below 1 SM NA. Straight-in Rwy 33 NA at night, Circling Rwy 6, 15, 33 NA at night.

MISSED APPROACH: Climbing right turn to 2500 direct LAANG LOM and hold.

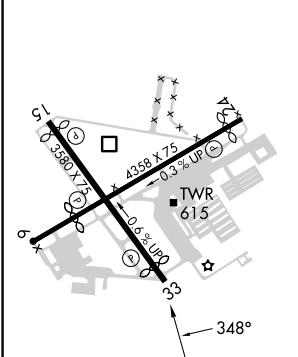
ATIS 124.15	LOUISVILLE APP CON 132.075 327.0	BOWMAN TOWER* 119.5 (CTAF) 257.625	GND CON 121.8	CLNC DEL 118.9	UNICOM 122.95
-----------------------	--	---	-------------------------	--------------------------	-------------------------



SE-1, 22 FEB 2024 to 21 MAR 2024

SE-1, 22 FEB 2024 to 21 MAR 2024

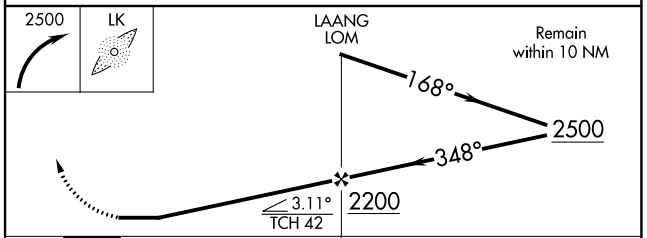
ELEV	546	D	TDZE	546
------	-----	----------	------	-----



REIL Rws 24 and 33
MIRL Rws 6-24 and 15-33

FAF to MAP 4.9 NM

Knots	60	90	120	150	180
Min:Sec	4:54	3:16	2:27	1:58	1:38



CATEGORY	A	B	C	D
S-33	1160-1	614 (700-1)	NA	
C CIRCLING	1160-1	614 (700-1)	NA	

WAAS CH 58126 W24A	APP CRS 244°	Rwy Idg TDZE Apt Elev	3856 545 546
--	------------------------	-----------------------------	---

RNAV (GPS) RWY 24

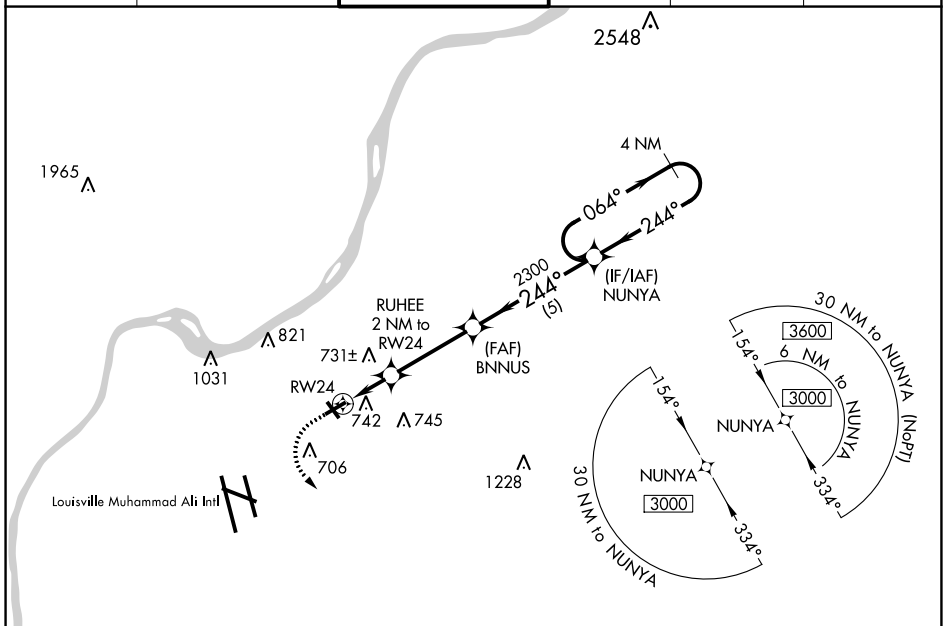
BOWMAN FLD (LOU)

RNP APCH - GPS.

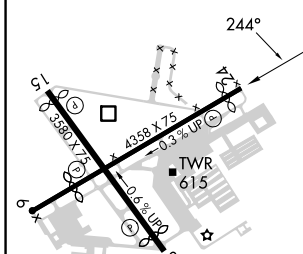
⚠ VDP NA with Louisville Muhammad Ali Intl altimeter setting. When local altimeter setting not received, use Louisville Muhammad Ali Intl altimeter setting. Rwy 24 helicopter visibility reduction below $\frac{3}{4}$ SM NA. Circling Rwy 6, 15, 33 NA at night.

⚠ MISSED APPROACH: Climb to 1100 then climbing left turn to 3000 direct CAANT and hold.

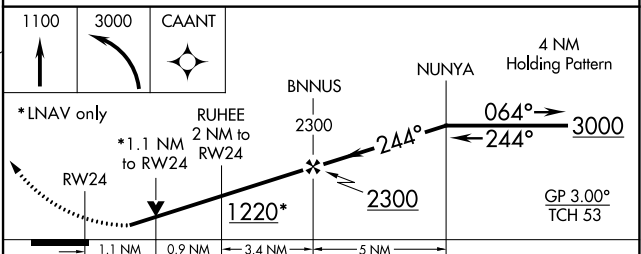
ATIS 124.15	LOUISVILLE APP CON 132.075 327.0	BOWMAN TOWER* 119.5 (CTAF) 257.625	GND CON 121.8	CLNC DEL 118.9	UNICOM 122.95
-----------------------	--	--	-------------------------	--------------------------	-------------------------



ELEV 546	D	TDZE 545
----------	----------	----------



REIL Rws 24 and 33
MIRL Rws 6-24 and 15-33 **Ⓢ**



CATEGORY	A	B	C	D
LPV DA	830-7 $\frac{7}{8}$	285 (300-7 $\frac{7}{8}$)		NA
LNAV/VNAV DA	1025-1 $\frac{1}{8}$	480 (500-1 $\frac{1}{8}$)		NA
LNAV MDA	1000-1	455 (500-1)		NA
Ⓢ CIRCLING	1060-1 514 (600-1)	1080-1 534 (600-1)		NA

SE-1, 22 FEB 2024 to 21 MAR 2024

SE-1, 22 FEB 2024 to 21 MAR 2024

WAAS CH 99526 W33A	APP CRS 328°	Rwy Idg TDZE 546 Apt Elev 546	3125 546 546
--	------------------------	---	---

RNAV (GPS) RWY 33

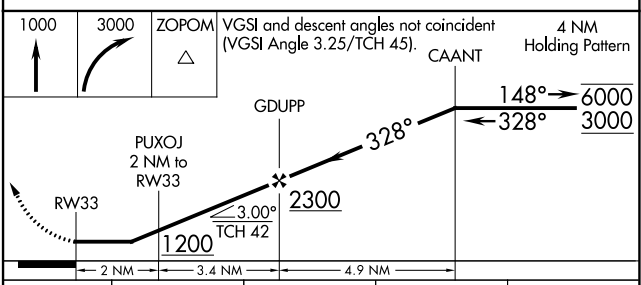
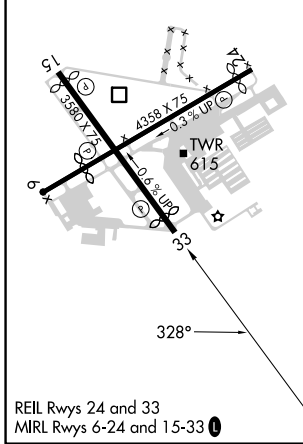
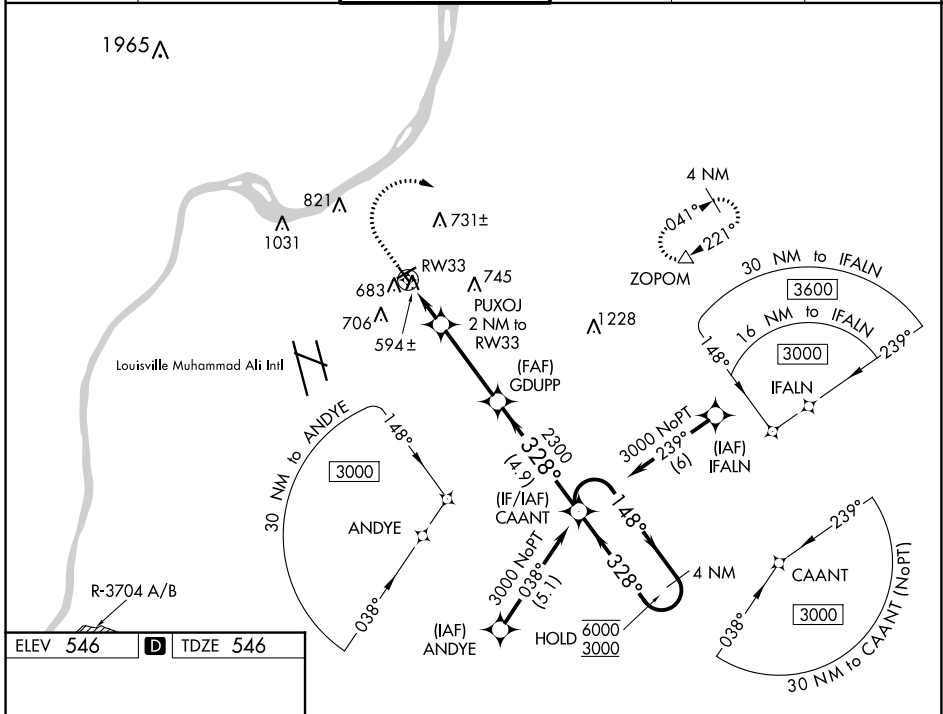
BOWMAN FLD (LOU)

RNP APCH - GPS.

▼ Rwy 33 helicopter visibility reduction below 1 SM NA. When local altimeter setting not received, use Louisville Muhammad Ali Intl altimeter setting.
▲ Straight-in Rwy 33 NA at night, Circling Rwy 6, 15, 33 NA at night.

MISSED APPROACH: Climb to 1000 then climbing right turn to 3000 direct ZOPOM and hold.

ATIS 124.15	LOUISVILLE APP CON 132.075 327.0	BOWMAN TOWER★ 119.5 (CTAF) 257.625	GND CON 121.8	CLNC DEL 118.9	UNICOM 122.95
-----------------------	--	--	-------------------------	--------------------------	-------------------------



CATEGORY	A	B	C	D
LP MDA	860-1	314 (400-1)		NA
LNAV MDA	920-1	374 (400-1)		NA
C CIRCLING	1060-1 514 (600-1)	1080-1 534 (600-1)		NA

SE-1, 22 FEB 2024 to 21 MAR 2024

SE-1, 22 FEB 2024 to 21 MAR 2024