

LOC I-LQG 111.7	APP CRS 073°	Rwy Idg 5002	TDZE 793
		Apt Elev 793	

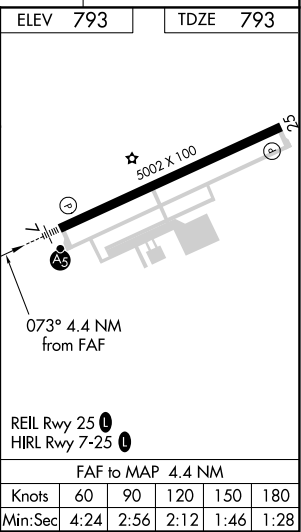
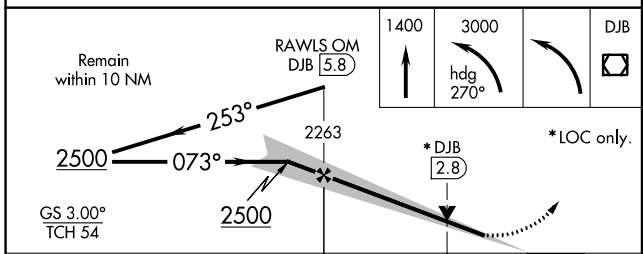
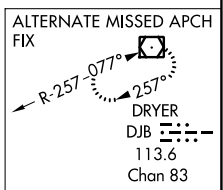
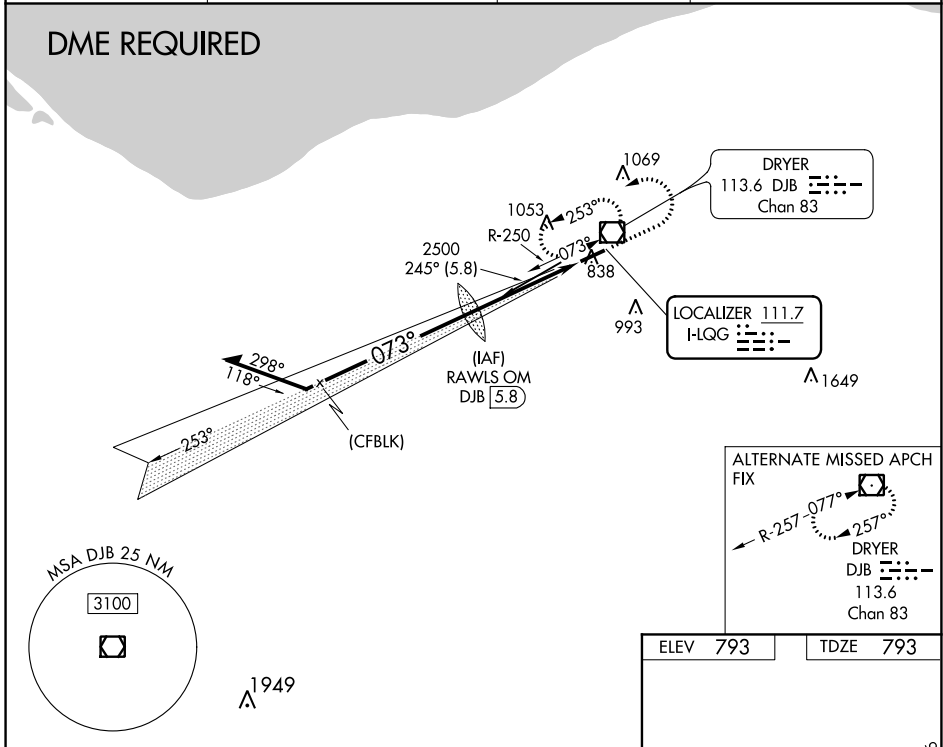
ILS or LOC RWY 7
LORAIN COUNTY RGNL (LPR)

⚠ For inoperative MALSR, increase S-LOC 7 Cats C/D visibility to 1 3/8 mile.
⚠ VDP NA with Cleveland-Hopkins Intl altimeter setting. When local altimeter setting not received, use Cleveland-Hopkins Intl altimeter setting and increase all DA 36 feet and all MDA 40 feet.



MISSED APPROACH: Climb to 1400 then climbing left turn to 3000 on heading 270° then left turn direct DJB VOR/DME and hold.

ASOS 121.425	CLEVELAND APP CON 126.35 346.325	CLNC DEL 125.7	UNICOM 122.7 (CTAF) 0
------------------------	--	--------------------------	---------------------------------



CATEGORY	A	B	C	D
S-ILS 07	993-1/2 200 (200-1/2)			
S-LOC 07	1280-1/2 487 (500-1/2)	1280-1 487 (500-1)		
C CIRCLING	1280-1 487 (500-1)	1360-1 567 (600-1)	1420-1 3/4 627 (700-1 3/4)	1420-2 627 (700-2)

EC-2, 22 APR 2021 to 20 MAY 2021

EC-2, 22 APR 2021 to 20 MAY 2021

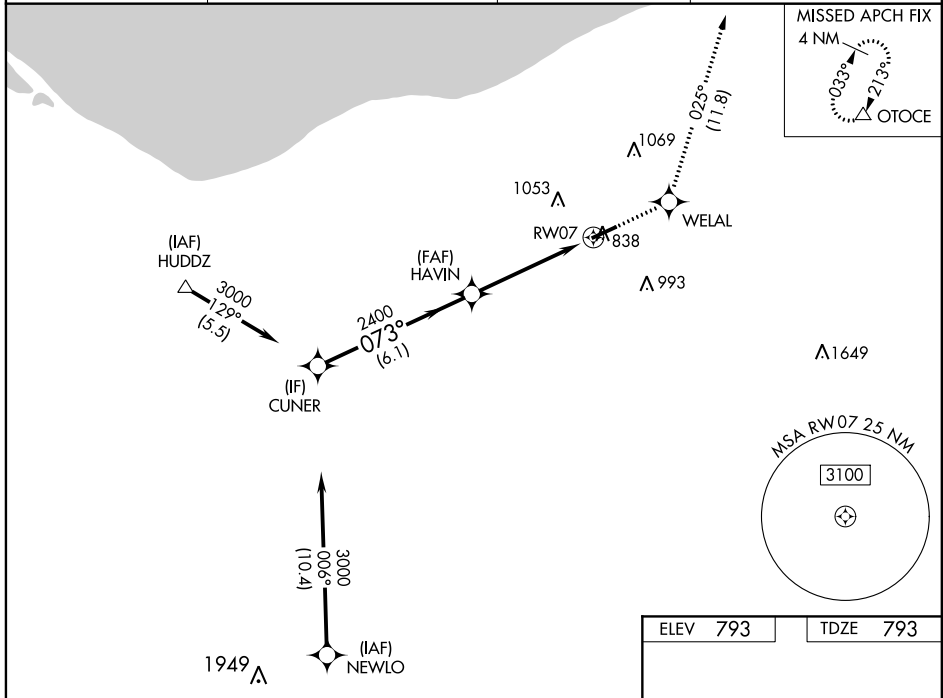
WAAS CH 99612 W07A	APP CRS 073°	Rwy Idg TDZE Apt Elev	5002 793 793
--	------------------------	-----------------------------	---

RNAV (GPS) RWY 7

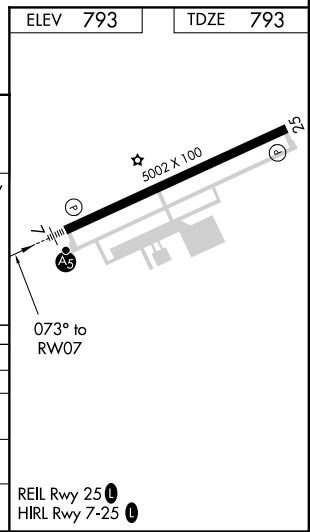
LORAIN COUNTY RGNL (L.P.R.)

RNP APCH.		MALS R	MISSED APPROACH: Climb to 3000 direct WELAL and on track 025° to OTOCE and hold.
For uncompensated Baro-VNAV systems, LNAV/VNAV NA below -16°C (4°F) or above 54°C (130°F).			

ASOS 121.425	CLEVELAND APP CON 126.35 346.325	CLNC DEL 125.7	UNICOM 122.7 (CTAF)
------------------------	--	--------------------------	-------------------------------



CUNER		HAVIN		WELAL		tr 025°		OTOCE	
3000		2400		3000		tr 025°		△	
GP 3.00°		2400		*1.5 NM to RW07		*LNAV only			
TCH 54		6.1 NM		3.3 NM		1.5 NM		RW07	
CATEGORY	A	B		C		D			
LPV DA		993-½		200 (200-½)					
LNAV/VNAV DA		1133-¾		340 (400-¾)					
LNAV MDA	1340-½	547 (600-½)		1340-1 ⅛		547 (600-1 ⅛)			
CIRCLING	1340-1 547 (600-1)	1360-1 567 (600-1)		1420-1 ¾ 627 (700-1 ¾)		1420-2 627 (700-2)			



EC-2, 22 APR 2021 to 20 MAY 2021

EC-2, 22 APR 2021 to 20 MAY 2021

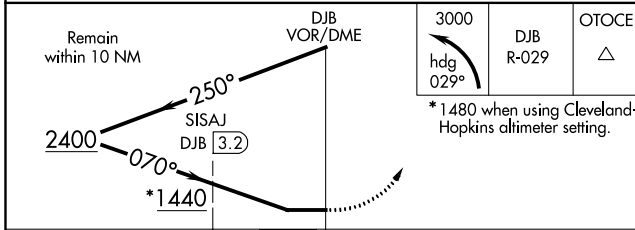
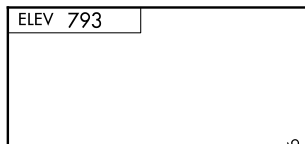
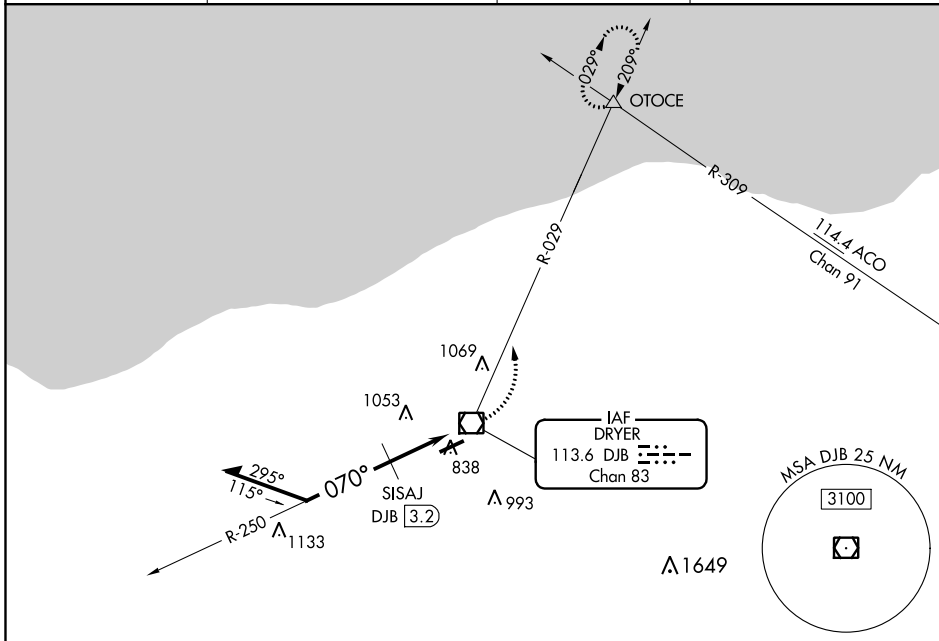
VOR/DME DJB 113.6 Chan 83	APP CRS 070°	Rwy Idg TDZE Apt Elev	N/A N/A 793
---	------------------------	-----------------------------	--

VOR-A
LORAIN COUNTY RGNL (LPR)

▼ When local altimeter setting not received, use Cleveland-Hopkins Intl altimeter setting and increase all MDA 40 feet, increase circling Cat C/D visibility ¼ mile.

MISSED APPROACH: Climbing left turn to 3000 via heading 029° and DJB VOR/DME R-029 direct OTOCE INT and hold.

ASOS 121.425	CLEVELAND APP CON 126.35 346.325	CLNC DEL 125.7	UNICOM 122.7 (CTAF) 0
------------------------	--	--------------------------	--



CATEGORY	A	B	C	D
C CIRCLING	1440-1	647 (700-1)	1440-1¾ 647 (700-1¾)	1440-2 647 (700-2)
SISAJ DME MINIMUMS				
C CIRCLING	1300-1 507 (600-1)	1360-1 567 (600-1)	1420-1¾ 627 (700-1¾)	1420-2 627 (700-2)

ELEV 793

OTOCE \triangle

DJB R-029

*1480 when using Cleveland-Hopkins altimeter setting.

REIL Rwy 25 **0**
HIRL Rwy 7-25 **0**

EC-2, 22 APR 2021 to 20 MAY 2021

EC-2, 22 APR 2021 to 20 MAY 2021