

18088

DREAM SIX DEPARTURE (DREAM6 • DREAM)

NELLIS AFB (KLSV)
LAS VEGAS, NEVADA

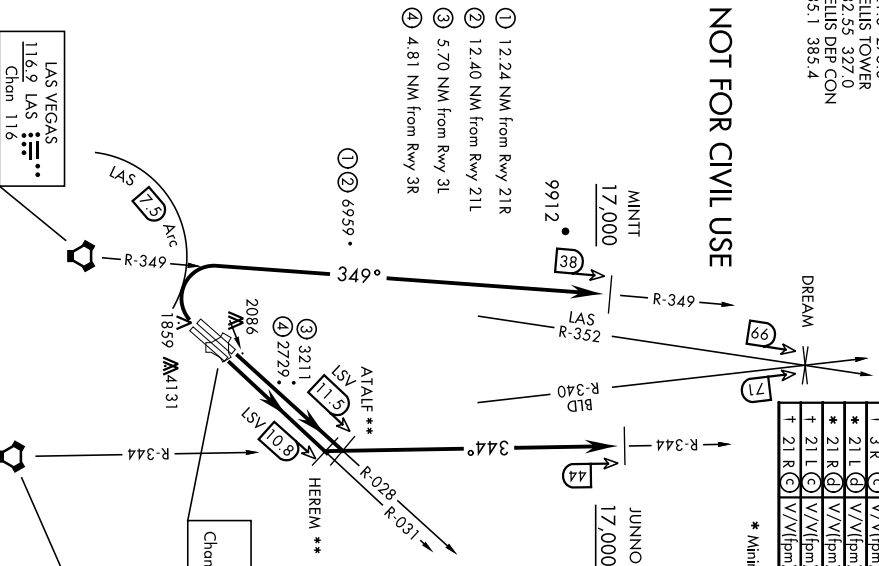
ATIS 270.1
CLNC DEL
120.9 289.4
GND CON
121.8 275.8
NELLIS TOWER
132.55 327.0
NELLIS DEF CON
135.1 385.4

Rwy	Knobs	60	120	180	240	300	360
* 3 L (A)	V/V(fpm)	269	538	807	1076	1345	1614
* 3 R (B)	V/V(fpm)	229	458	687	916	1145	1374
† 3 L (C)	V/V(fpm)	498	996	1494	1992	2490	2988
† 3 R (C)	V/V(fpm)	496	992	1488	1984	2480	2976
* 21 L (D)	V/V(fpm)	389	778	1167	1556	1945	2334
* 21 R (D)	V/V(fpm)	395	790	1185	1580	1975	2370
† 21 L (C)	V/V(fpm)	453	906	1359	1812	2265	2718
† 21 R (C)	V/V(fpm)	457	914	1371	1828	2285	2742

* Minimum † ATC Climb Rate

- (A) to 3400
- (B) to 3000
- (C) to 17,000
- (D) to 8500

NOT FOR CIVIL USE



- ① 12.24 NM from Rwy 21R
- ② 12.40 NM from Rwy 21L
- ③ 5.70 NM from Rwy 3L
- ④ 4.81 NM from Rwy 3R

CAUTION: If unable to comply with restrictions advise ATC prior to departure.

** Lead DME:
ATALF - LSV 9.5
HEREM - LSV 8.8

DEPARTURE ROUTE DESCRIPTION

▼ **TAKE-OFF RWWY 3L:** Fly runway heading to intercept the LSV TACAN R-028 then direct ATALF, intercept the BLD VORTAC R-344 then direct JUNNO, cross JUNNO at or above 17,000, then via assigned route.

TAKE-OFF RWWY 3R: Fly runway heading to intercept the LSV TACAN R-031 then direct HEREM, intercept the BLD VORTAC R-344 then direct JUNNO, cross JUNNO at or above 17,000, then via assigned route.

TAKE-OFF RWWY 21L/R: Turn right to intercept LAS VORTAC R-349 outbound. Remain North of LAS 7.5 DME turning Northbound. Intercept LAS R-349 between 5000 and 6000, do not proceed West of LAS R-349. Cross MINITT at above 17,000, then via assigned route.

NOISE ABATEMENT PROCEDURES: Fly LAW Nellis Noise Abatement instructions published in AP/1.

DREAM SIX DEPARTURE (DREAM6 • DREAM)

Amth: 5 29MAR18

LAS VEGAS, NEVADA
NELLIS AFB (KLSV)

20086

MORMON MESA SEVEN DEPARTURE (MMM7 • MMM)

NELLIS AFB (KLSV)
LAS VEGAS, NEVADA

SHL-227 [USAF]

ATIS 227.1
CLINC DEL
120.9 289.4
GND CON
121.8 275.8
NELLIS TOWER
132.55 327.0
NELLIS DEP CON
135.1 385.4
LOS ANGELES CENTER
124.2 134.65 307.9 343.6

MORMON MESA
114.3 MMM
Chan 90
L-9, H-3

**RADAR REQUIRED
ABOVE FL190**

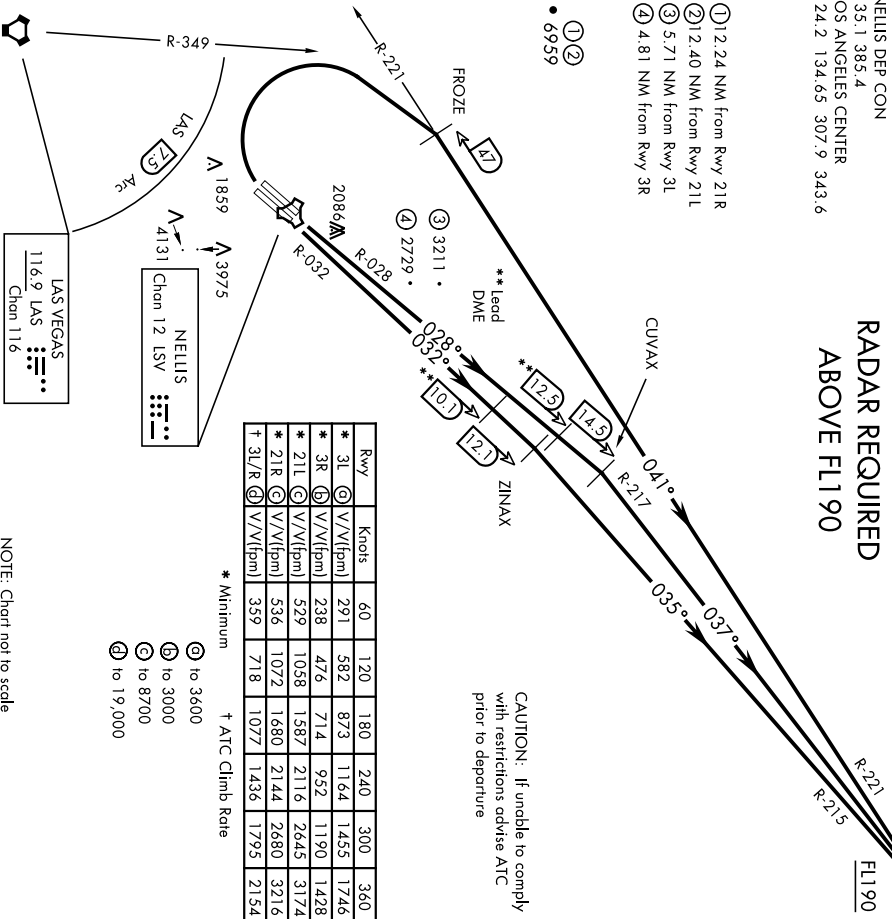
- ① 1.24 NM from Rwy 21R
- ② 12.40 NM from Rwy 21L
- ③ 5.71 NM from Rwy 31L
- ④ 4.81 NM from Rwy 3R
- ①②
- 6959

CAUTION: If unable to comply with restrictions advise ATC prior to departure

Rwy	Knots	60	120	180	240	300	360
* 3L	V/V(fpm)	291	582	873	1164	1455	1746
* 3R	V/V(fpm)	238	476	714	952	1190	1428
* 21L	V/V(fpm)	529	1058	1587	2116	2645	3174
* 21R	V/V(fpm)	536	1072	1680	2144	2680	3216
† 3L/R	V/V(fpm)	359	718	1077	1436	1795	2154

* Minimum † ATC Climb Rate

- ⓐ to 3600
- ⓑ to 3000
- ⓒ to 8700
- ⓓ to 19,000



NOTE: Chart not to scale

DEPARTURE ROUTE DESCRIPTION

TAKE-OFF Rwy 3L: Fly runway heading to intercept LSV TACAN R-028 then direct CUVAX, intercept the MMM VORTAC R-217 then direct MMM climbing to FL190 or as assigned, then via assigned route.

TAKE-OFF Rwy 3R: Fly runway heading to intercept LSV TACAN R-032 then direct ZINAX, intercept the MMM VORTAC R-215 then direct MMM climbing to FL190 or as assigned, then via assigned route.

TAKE-OFF Rwy 21L/R: Turn right to intercept MMM VORTAC R-221 prior to MMM 47 DME (FROZE), remain north of the LAS VORTAC 7.5 DME, remain East of LAS R-349, intercept MMM R-221 then direct MMM, cross MMM at or above FL190 then via assigned route.

NOISE ABATEMENT PROCEDURES: Fly Law Nellis Noise Abatement instructions published in AP/1.

MORMON MESA SEVEN DEPARTURE (MMM7 • MMM)

Amnd 6 26MAR20

LAS VEGAS, NEVADA
NELLIS AFB (KLSV)