

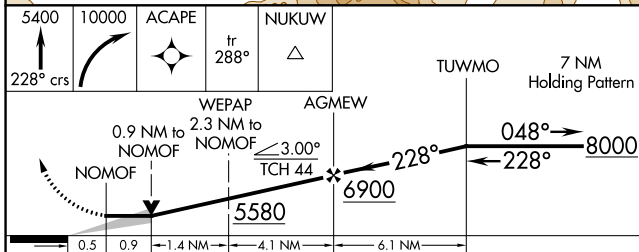
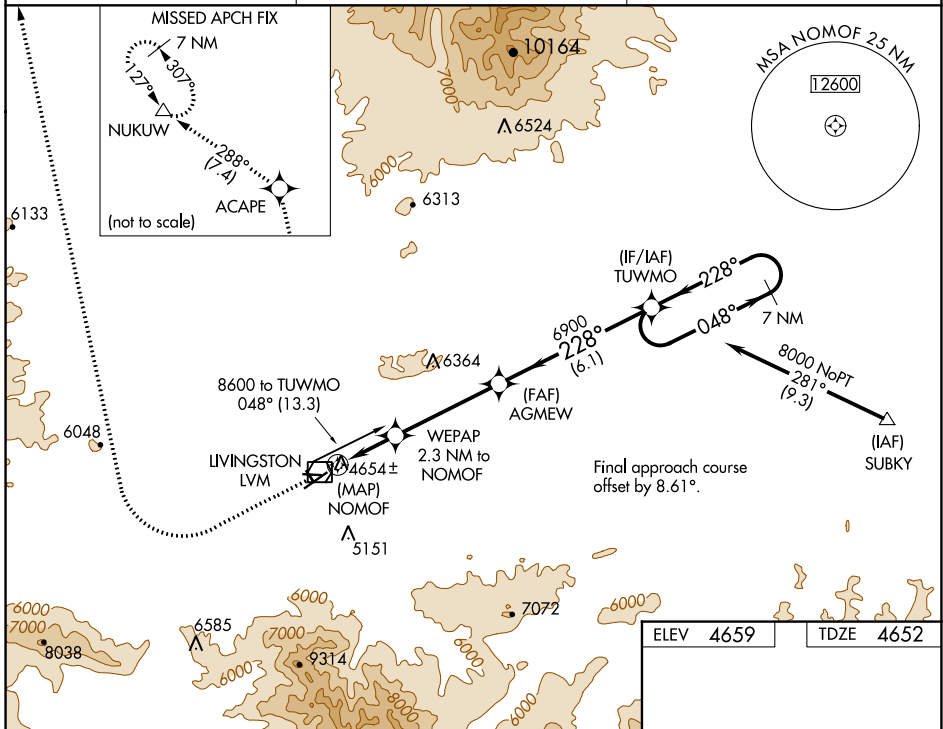
WAAS CH 48824 W22A	APP CRS 228°	Rwy Idg TDZE 4652 Apt Elev 4659	5701 4652 4659
--	------------------------	---	---

RNAV (GPS) RWY 22

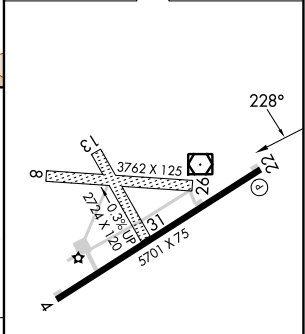
MISSION FLD (LVM)

RNP APCH - GPS.	MISSED APPROACH: Climb to 5400 on course 228° then climbing right turn to 10000 direct ACAPE and on track 288° to NUKUW and hold.
<p>Circling NA for Cats C and D southeast of Rwy 4-22. Circling NA to Rwys 8-26 and 13-31. -29°C</p>	

ASOS 135.275	BIG SKY APP CON ★ 119.55 235.775	UNICOM 123.0 (CTAF)
------------------------	--	-------------------------------



ELEV 4659	TDZE 4652
-----------	-----------



CATEGORY	A	B	C	D
LP MDA	5260-1	608 (700-1)	5260-1¾	608 (700-1¾)
LNNAV MDA	5360-1	708 (800-1)	5360-2	708 (800-2)
CIRCLING	5360-1 701 (800-1)	5380-1 721 (800-1)	5400-2¼ 741 (800-2¼)	6700-3 2041 (2100-3)

REIL Rwy 22
MIRL Rwy 4-22

NW-1, 22 FEB 2024 to 21 MAR 2024

NW-1, 22 FEB 2024 to 21 MAR 2024

VOR/DME LVM 116.1 Chan 108	APP CRS 145°	Rwy Idg TDZE Apt Elev 4659	N/A N/A
--	------------------------	--	--------------------------

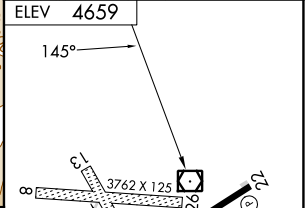
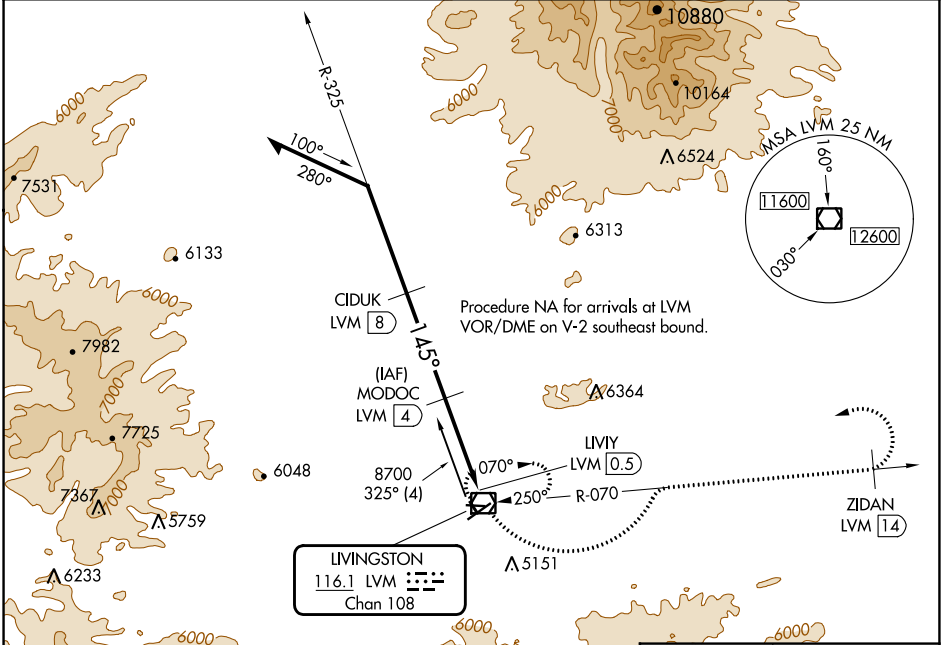
VOR/DME-B

MISSION FLD (LVM)

⚠ Circling NA for Cats C southeast of Rwy 4-22.
⚠ Circling NA to Rwy 8-26 and 13-31.
 -29°C

MISSED APPROACH: Climbing left turn to 9900
 via LVM VOR/DME R-070 to ZIDAN/14 DME
 and left turn direct LVM VOR/DME and hold.

ASOS 135.275	BIG SKY APP CON ★ 119.55 235.775	UNICOM 123.0 (CTAF)
------------------------	--	-------------------------------



8700 7400 6300 4 NM 3.5 NM	MODOC LVM 4 10000	9900 LVM R-070	ZIDAN LVM 14	LVM
	CIDUK LVM 8 145°	LIVIY LVM 0.5		

CATEGORY	A	B	C	D
CIRCLING	5540-1¼	881 (900-1¼)	5540-2¾ 881 (900-2¾)	NA

REIL Rwy 22	MIRL Rwy 4-22
-------------	---------------

NW-1, 22 FEB 2024 to 21 MAR 2024

NW-1, 22 FEB 2024 to 21 MAR 2024