

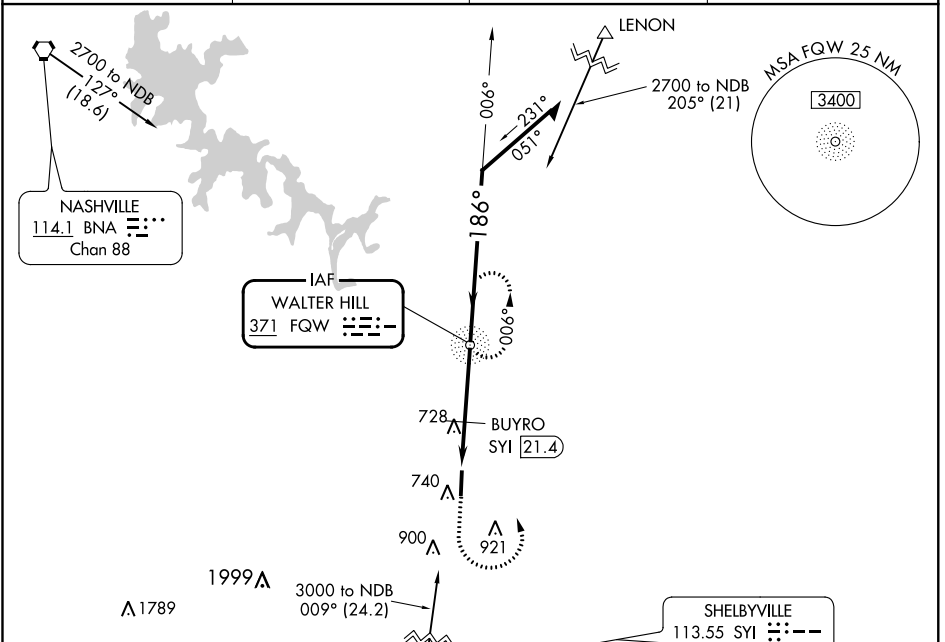
NDB FQW 371	APP CRS 186°	Rwy ldg TDZE Apt Elev	4753 609 614
-----------------------	------------------------	-----------------------------	---

NDB RWY 18

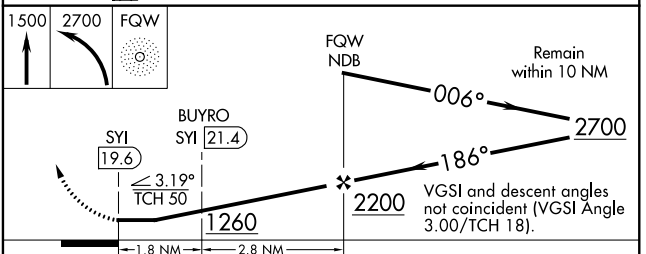
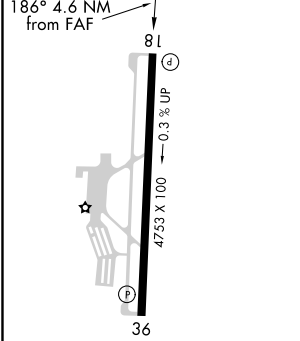
MURFREESBORO MUNI (MBT)

▽ MISSED APPROACH: Climb to 1500 then climbing left turn to 2700 direct FQW NDB and hold.

AWOS-3 133.975	NASHVILLE APP CON 118.4 360.7	GCO 135.075	UNICOM 123.075 (CTAF)
--------------------------	---	-----------------------	---------------------------------



ELEV 614	TDZE 609
----------	----------



CATEGORY	A	B	C	D
S-18	1260-1 651 (700-1)		1260-1 $\frac{7}{8}$ 651 (700-1 $\frac{7}{8}$)	NA
C CIRCLING	1260-1 646 (700-1)		1280-1 $\frac{7}{8}$ 666 (700-1 $\frac{7}{8}$)	NA
BUYRO FIX MINIMUMS (DME REQUIRED)				
S-18	1040-1 431 (500-1)		1040-1 $\frac{1}{4}$ 431 (500-1 $\frac{1}{4}$)	NA
C CIRCLING	1080-1 466 (500-1)		1280-1 $\frac{3}{4}$ 666 (700-1 $\frac{3}{4}$)	NA

MIRL Rwy 18-36
REIL Rws 18 and 36

FAF to MAP 4.6 NM

Knots	60	90	120	150	180
Min:Sec	4:36	3:04	2:18	1:50	1:32

SE-1, 30 JAN 2020 to 27 FEB 2020

SE-1, 30 JAN 2020 to 27 FEB 2020

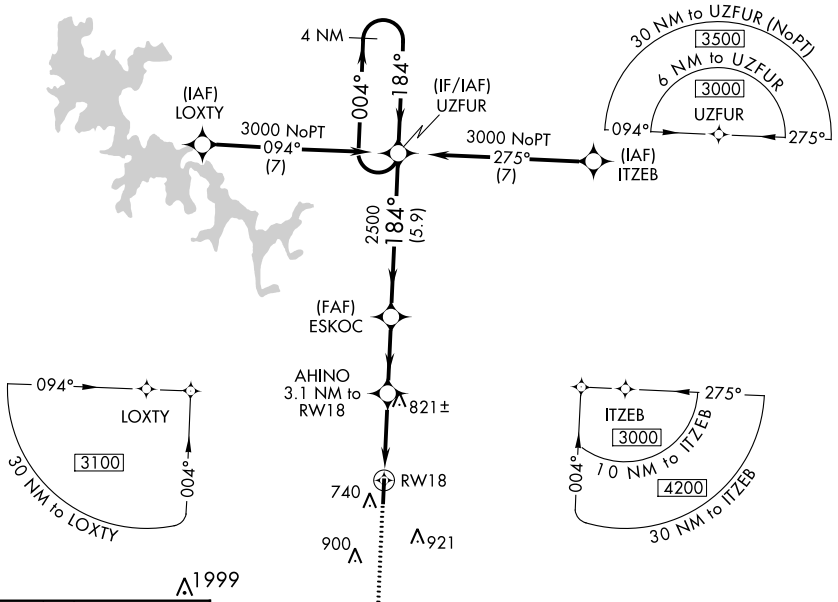
WAAS CH 48812 W18A	APP CRS 184°	Rwy Idg TDZE Apt Elev	4753 609 614
--	------------------------	-----------------------------	---

RNAV (GPS) RWY 18

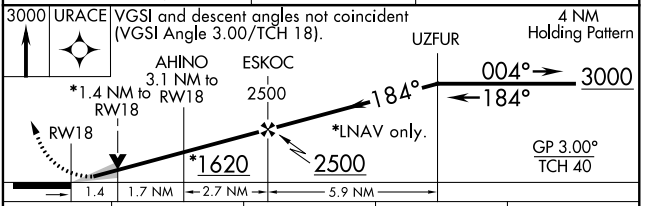
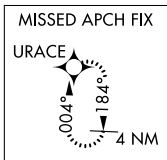
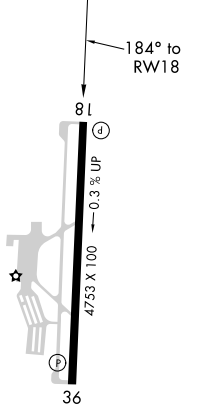
MURFREESBORO MUNI (MBT)

▼ For uncompensated Baro-VNAV systems, LNAV/VNAV NA below -16°C (4°F) or above 54°C (130°F). DME/DME RNP-0.3 NA. MISSED APPROACH: Climb to 3000 direct URACE and hold.

AWOS-3 133.975	NASHVILLE APP CON 118.4 360.7	GCO 135.075	UNICOM 123.075 (CTAF)
--------------------------	---	-----------------------	---------------------------------



ELEV 614	TDZE 609
----------	----------



CATEGORY	A	B	C	D
LPV DA		859-3/4	250 (300-3/4)	NA
LNAV/VNAV DA		898-7/8	289 (300-7/8)	NA
LNAV MDA	1080-1	471 (500-1)	1080-1 3/8 471 (500-1 3/8)	NA
C CIRCLING	1080-1	466 (500-1)	1280-1 3/4 666 (700-1 3/4)	NA

SE-1, 30 JAN 2020 to 27 FEB 2020

SE-1, 30 JAN 2020 to 27 FEB 2020

WAAS CH 61332 W36A	APP CRS 004°	Rwy Idg TDZE Apt Elev	4753 614 614
--	------------------------	-----------------------------	---

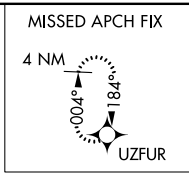
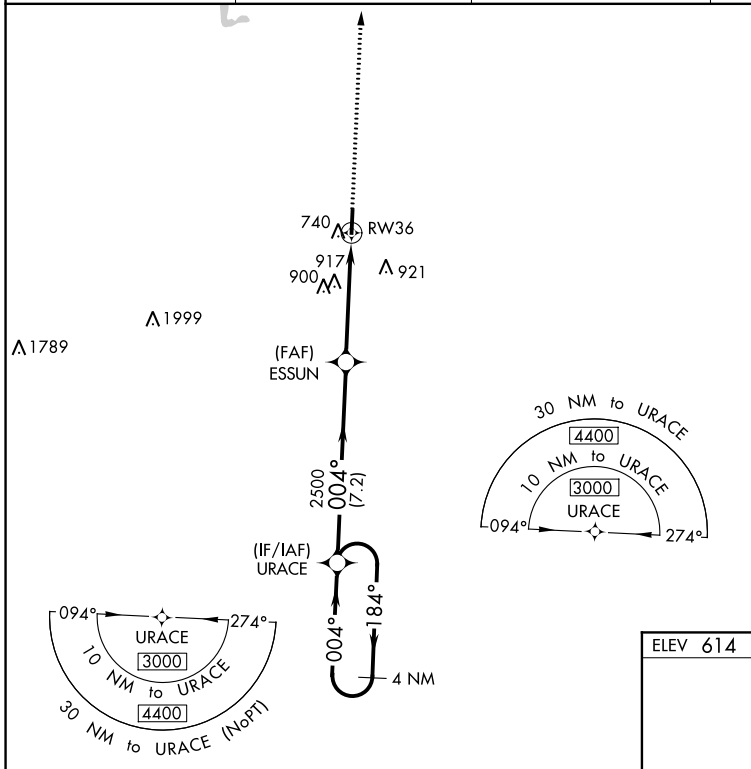
RNAV (GPS) RWY 36

MURFREESBORO MUNI (MBT)

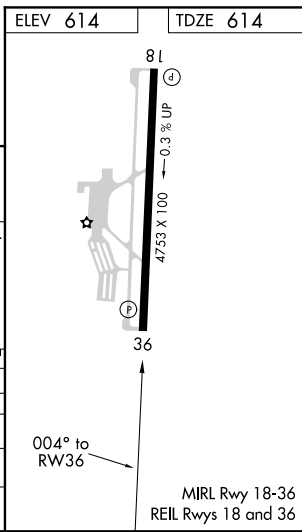
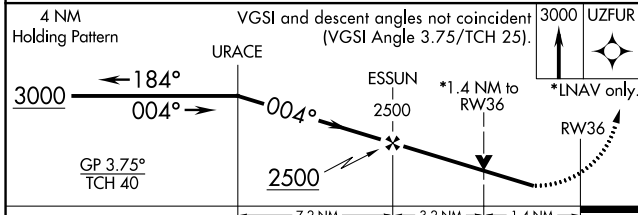
▼ For uncompensated Baro-VNAV systems, procedure NA below -16° C (4°F) or above 54° C (130°F). Rwy 36 helicopter visibility reduction below 3/4 SM NA. DME/DME RNP-0.3 NA.

MISSED APPROACH:
Climb to 3000 direct UZFUR and hold.

AWOS-3 133.975	NASHVILLE APP CON 118.4 360.7	GCO 135.075	UNICOM 123.075 (CTAF)
--------------------------	---	-----------------------	---------------------------------



2349 A



CATEGORY	A	B	C	D
LPV DA	914-7/8	300 (300-7/8)		NA
LNAV/VNAV DA	1030-1/8	416 (500-1/8)		NA
LNAV MDA	1180-1 566 (600-1)		1180-15/8 566 (600-15/8)	NA
C CIRCLING	1180-1 566 (600-1)		1280-13/4 666 (700-13/4)	NA

SE-1, 30 JAN 2020 to 27 FEB 2020

SE-1, 30 JAN 2020 to 27 FEB 2020