

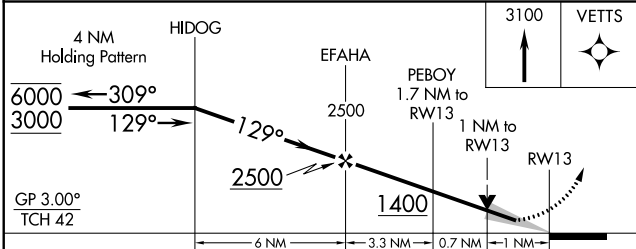
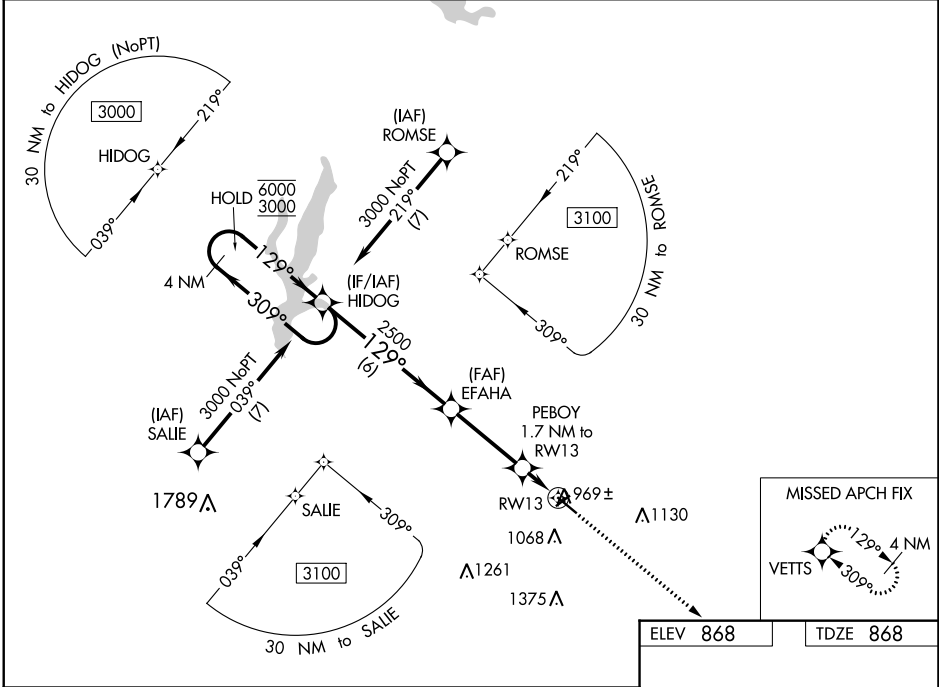
WAAS CH 56621 W13A	APP CRS 129°	Rwy Idg 5000 TDZE 868 Apt Elev 868
--	------------------------	---

RNAV (GPS) RWY 13

OMAR N BRADLEY (MBY)

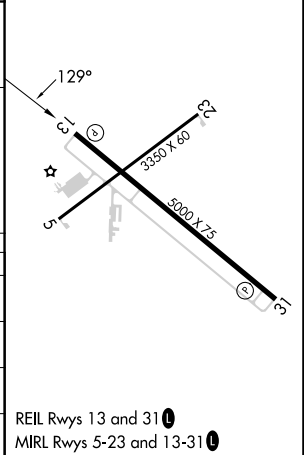
RNP APCH-GPS.	MISSED APPROACH: Climb to 3100 direct VETTS and hold.
<p>⚠ Circling to Rwy 5, 23, 31 NA at night. For uncompensated Baro-VNAV systems, LNAV/VNAV NA below -16°C or above 54°C.</p>	

AWOS-3PT 120.025	KANSAS CITY CENTER 125.25 235.975	UNICOM 122.7 (CTAF) ①
----------------------------	---	---------------------------------



ELEV 868	TDZE 868
----------	----------

CATEGORY	A	B	C	D
LPV DA	1118-3/4	250 (300-3/4)		NA
LNAV/VNAV DA	1139-7/8	271 (300-7/8)		NA
LNAV MDA	1220-1	352 (400-1)		NA
C CIRCLING	1380-1 512 (600-1)	1440-1 572 (600-1)	1520-1 1/4 652 (700-1 1/4)	NA



NC-3, 22 FEB 2024 to 21 MAR 2024

NC-3, 22 FEB 2024 to 21 MAR 2024

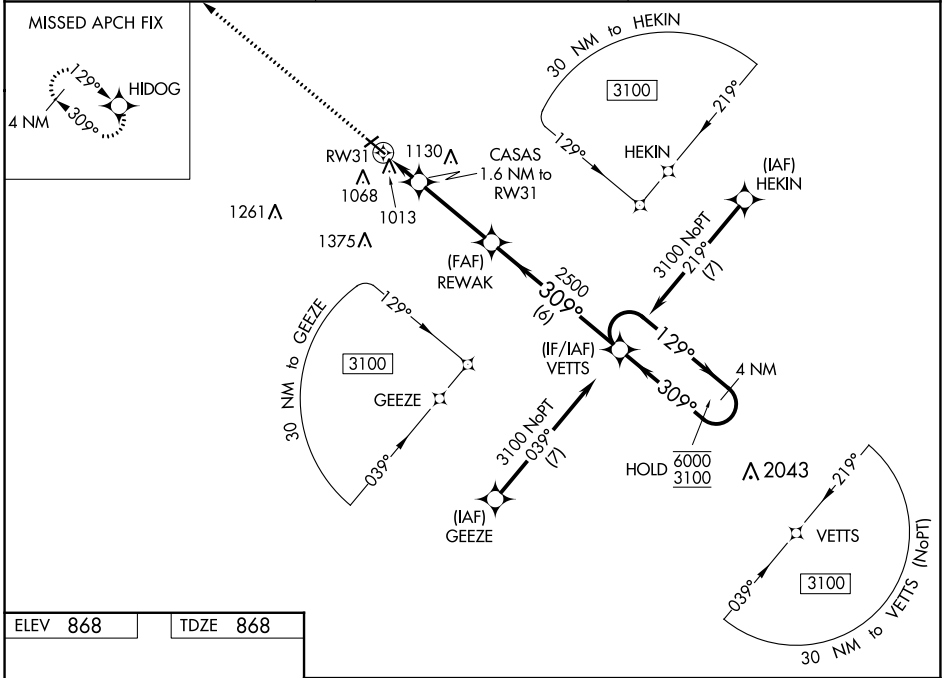
WAAS CH 61321 W31A	APP CRS 309°	Rwy Idg 5000 TDZE 868 Apt Elev 868
--	------------------------	---

RNAV (GPS) RWY 31

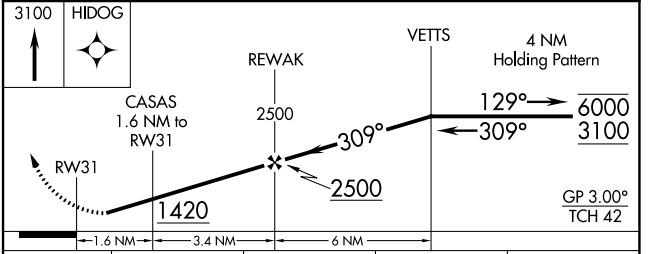
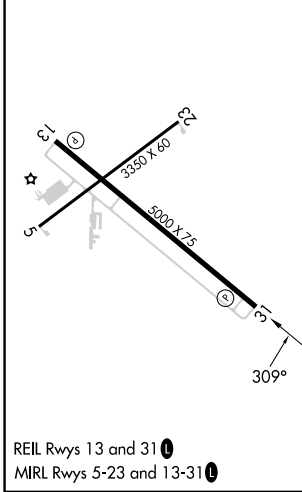
OMAR N BRADLEY (MBY)

RNP APCH-GPS.	MISSED APPROACH: Climb to 3100 direct H1DOG and hold.
<p>⚠ Circling Rwy 5, 23, 31 NA at night. Rwy 31 helicopter visibility reduction below 1 SM NA. For uncompensated Baro-VNAV systems, LNAV/VNAV NA below -16°C or above 54°C. Straight-in minimums NA at night.</p>	

AWOS-3PT 120.025	KANSAS CITY CENTER 125.25 235.975	UNICOM 122.7 (CTAF) 0
----------------------------	---	---------------------------------



ELEV 868	TDZE 868
----------	----------



CATEGORY	A	B	C	D
LPV DA	1125-1 257 (300-1)			NA
LNAV/VNAV DA	1183-1 315 (400-1)			NA
LNAV MDA	1280-1	412 (500-1)	1280-1 1/8 412 (500-1 1/8)	NA
CIRCLING	1380-1 512 (600-1)	1440-1 572 (600-1)	1520-1 3/4 652 (700-1 3/4)	NA

NC-3, 22 FEB 2024 to 21 MAR 2024

NC-3, 22 FEB 2024 to 21 MAR 2024