

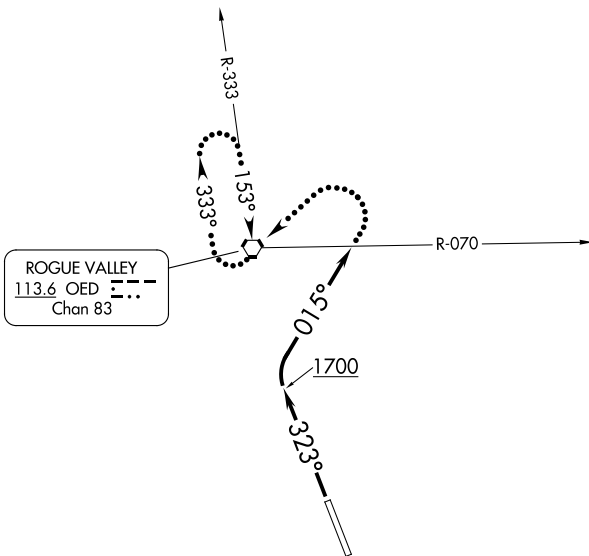
EAGLE SIX DEPARTURE

AL-251 (FAA)

ROGUE VALLEY INTL-MEDFORD (MFR)
MEDFORD, OREGON

CASCADE DEP CON ★
 124.3 379.9
 ATIS
 127.25
 GND CON
 121.8
 MEDFORD TOWER ★
 119.4 (CTAF) 257.8
 SEATTLE CENTER
 124.85 306.3

**TOP ALTITUDE:
11000**



TAKEOFF MINIMUMS

Rwys 14: NA - ATC.

Rwy 32: Standard with minimum climb of 410' per NM to 6300.

NOTE: Chart not to scale.

DEPARTURE ROUTE DESCRIPTION

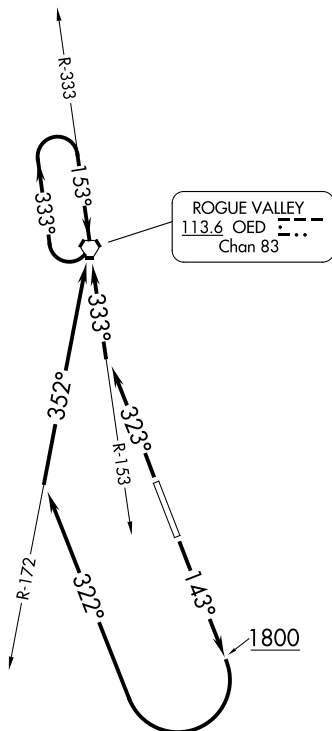
TAKEOFF RUNWAY 32: Climb to 1700 on heading 323° then climbing right turn heading 015°, maintain 11000 or assigned altitude, expect RADAR vectors to assigned route; expect filed altitude/flight level five minutes after departure.

LOST COMMUNICATIONS: If no contact with ATC crossing the OED R-070, turn left, proceed direct OED VORTAC, continue climb in holding pattern to minimum crossing altitude/minimum enroute altitude before proceeding on course.

NW-1, 22 FEB 2024 to 21 MAR 2024

NW-1, 22 FEB 2024 to 21 MAR 2024

CASCADE DEP CON ★
124.3 379.9
ATIS
127.25
GND CON
121.8
MEDFORD TOWER ★
119.4 (CTAF) 257.8
SEATTLE CENTER
124.85 306.3



TAKEOFF MINIMUMS

Rwy 14: Standard with a minimum climb of 435' per NM to 4700.
Rwy 32: Standard with a minimum climb of 300' per NM to 6800.

NOTE: Chart not to scale.



DEPARTURE ROUTE DESCRIPTION

TAKEOFF RUNWAY 14: Climb on heading 143° to 1800, then climbing right turn heading 322° and OED VORTAC R-172 to OED VORTAC, thence. . . .

TAKEOFF RUNWAY 32: Climb on heading 323° to intercept the OED VORTAC R-153 to OED VORTAC, thence. . . .

. . . . continue climb-in-hold in OED VORTAC holding pattern to cross OED VORTAC at or above MEA/MCA for direction of flight before proceeding on course.

KLAMATH FALLS ONE DEPARTURE (RNAV)
(MFR) .LMT) 29DEC22

ROGUE VALLEY INTL-MEDFORD (MFR)
MEDFORD, OREGON

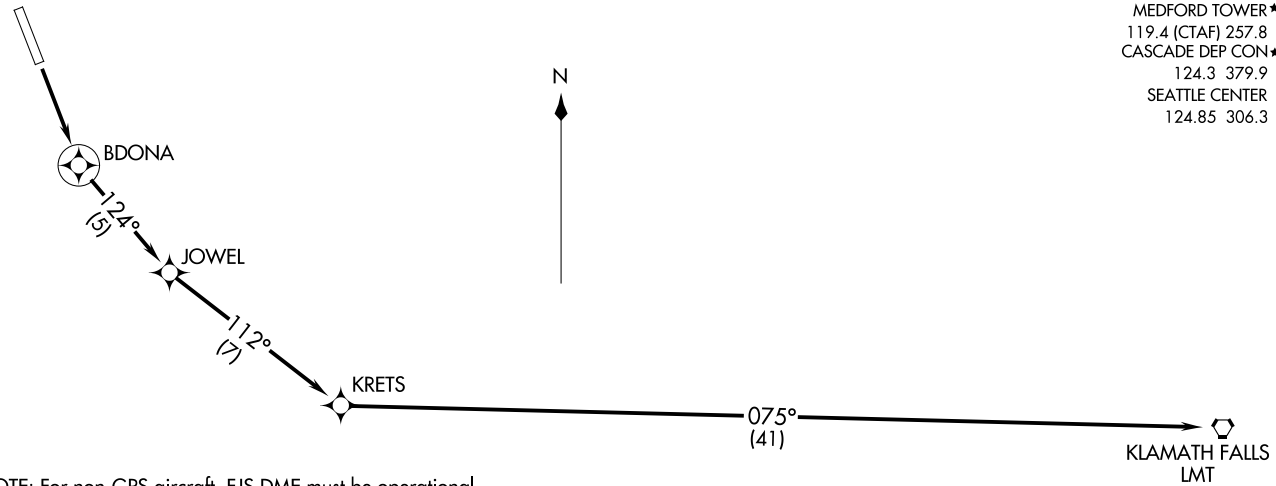
**TOP ALTITUDE:
ASSIGNED BY ATC**

RNAV 1 - DME/DME/IRU or GPS.
RADAR required for non-GPS equipped aircraft.

ATIS
127.25
GND CON
121.8
MEDFORD TOWER *
119.4 (CTAF) 257.8
CASCADE DEP CON *
124.3 379.9
SEATTLE CENTER
124.85 306.3

(MFR) .LMT) 22363
KLAMATH FALLS ONE DEPARTURE (RNAV)

AL-251 (FAA)
ROGUE VALLEY INTL-MEDFORD (MFR)
MEDFORD, OREGON



NOTE: For non-GPS aircraft, FJS DME must be operational.

TAKEOFF MINIMUMS

Rwy 14: Standard with minimum climb of 425' per NM to 6400.

NOTE: Chart not to scale.

DEPARTURE ROUTE DESCRIPTION

TAKEOFF RUNWAY 14: Climb direct BDONA, then on track 124° to JOWEL, then on track 112° to KRETS, then on track 075° to LMT VORTAC. Expect RADAR vectors on course. Maintain assigned altitude. Expect filed altitude five minutes after departure.

(SMKKY1.SMKKY) 22363

SMKKY ONE DEPARTURE (RNAV)

AL-251 (FAA)

ROGUE VALLEY INTL-MEDFORD (MFR)
MEDFORD, OREGON

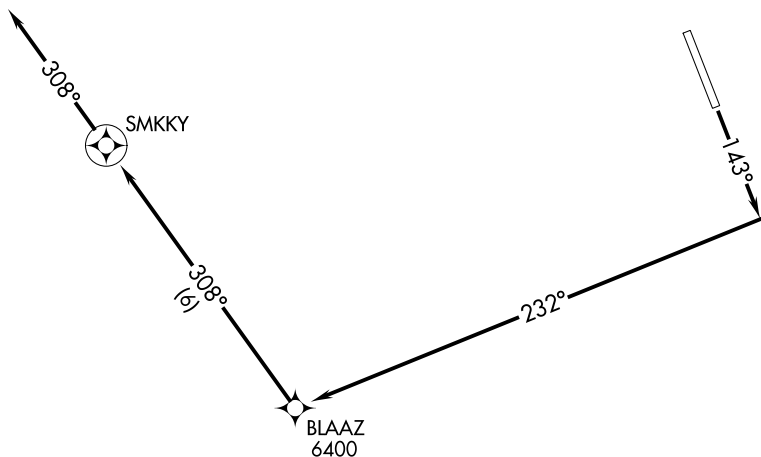
ATIS
127.25
GND CON
121.8
MEDFORD TOWER ★
119.4 (CTAF) 257.8
CASCADE DEP CON ★
124.3 379.9
SEATTLE CENTER
124.85 306.3

RNAV 1 - DME/DME/IRU or GPS.
RADAR required for non-GPS equipped aircraft.

**TOP ALTITUDE:
ASSIGNED BY ATC**

NW-1, 22 FEB 2024 to 21 MAR 2024

NW-1, 22 FEB 2024 to 21 MAR 2024



TAKEOFF MINIMUMS

Rwy 14: Standard with minimum climb of 500' per NM to 1836, then minimum climb of 450' per NM to 5200.

NOTE: Chart not to scale.



DEPARTURE ROUTE DESCRIPTION

TAKEOFF RUNWAY 14: Climb on heading 143° to intercept course 232° to cross BLAAZ at or above 6400, then on track 308° to SMKKY, then on track 308°. Expect RADAR vectors on course. Maintain assigned altitude. Expect filed altitude five minutes after departure.

SMKKY ONE DEPARTURE (RNAV)
(SMKKY1.SMKKY) 29DEC22

MEDFORD, OREGON
ROGUE VALLEY INTL-MEDFORD (MFR)