

BITHO SEVEN ARRIVAL

ORLANDO APP CON
 128.375 338.2
 ISM ATIS
 128.775
 KCOF ATIS
 119.175 273.5
 MLB ATIS
 132.55
 MCO D-ATIS ARR
 121.25
 TIX ATIS
 120.625

ORMOND BEACH
 112.6 OMN
 Chan 73
 N29° 18.20' - W81° 06.76'
 L-21-23-24, H-8

OCALA
 113.7 OCF
 Chan 84

ORLANDO
 112.2 ORL
 Chan 59

LAMMA
 N29° 00.87' - W81° 05.38'
TURBOJET VERTICAL NAVIGATION
PLANNING INFORMATION

Expect clearance to cross at 15000' landing Patrick SFB, Melbourne Orlando Intl, and Merritt Island.

Expect clearance to cross at 12000' landing Orlando Intl, Kissimmee Gateway, Space Coast Rgnl, Cape Canaveral SFS Skid Strip, and Space Florida Launch and Landing.
 NOTE: Orlando Intl Landing South: Expect clearance to cross at 250K.

COZMO
 N28° 47.95' - W81° 04.36'
TURBOJET VERTICAL NAVIGATION
PLANNING INFORMATION

Expect clearance to cross at 10000' landing Orlando Intl Rwy 18.

BITHO
 N28° 37.86' - W81° 03.56'
TURBOJET VERTICAL NAVIGATION
PLANNING INFORMATION

Expect clearance to cross at 8000' landing Space Florida Launch and Landing Facility, Cape Canaveral SFS Skid Strip, Merritt Island, Patrick SFB, and Melbourne Orlando Intl.

ORLANDO INTL

KISSIMMEE GATEWAY

SPACE FLORIDA LAUNCH AND LANDING FACILITY

SPACE COAST RGNL

CAPE CANAVERAL SFS SKID STRIP

MERRITT ISLAND

PATRICK SFB

MELBOURNE ORLANDO INTL

NOTE: Chart not to scale.

ARRIVAL ROUTE DESCRIPTION

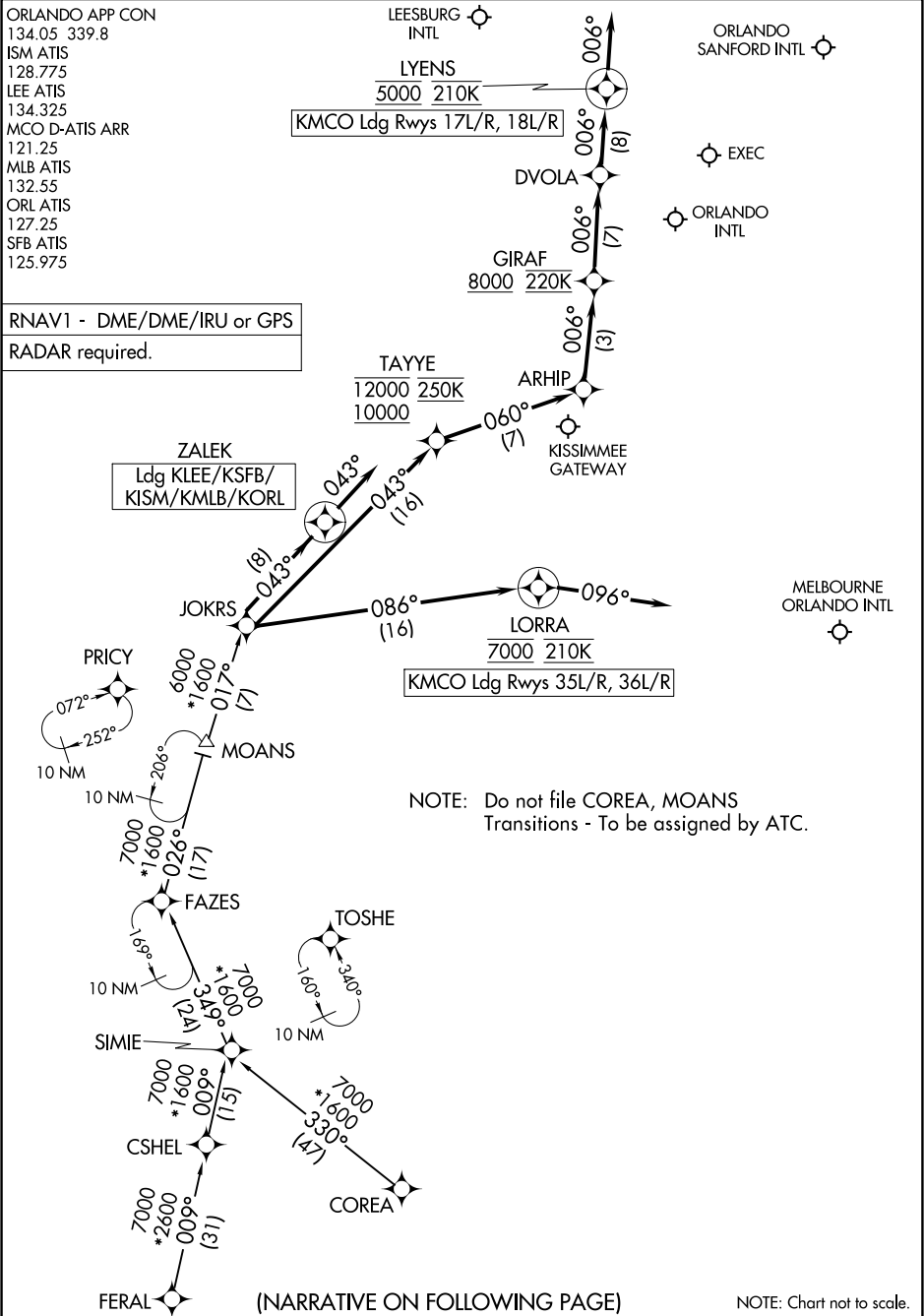
From over OMN VORTAC via OMN R-176 to BITHO INT. Expect RADAR vectors to final approach course after BITHO INT.

JOKRS THREE ARRIVAL (RNAV)

ORLANDO, FLORIDA

ORLANDO APP CON
 134.05 339.8
 ISM ATIS
 128.775
 LEE ATIS
 134.325
 MCO D-ATIS ARR
 121.25
 MLB ATIS
 132.55
 ORL ATIS
 127.25
 SFB ATIS
 125.975

RNAV1 - DME/DME/IRU or GPS
 RADAR required.



NOTE: Do not file COREA, MOANS Transitions - To be assigned by ATC.

(NARRATIVE ON FOLLOWING PAGE)

NOTE: Chart not to scale.

JOKRS THREE ARRIVAL (RNAV)

ORLANDO, FLORIDA

ARRIVAL ROUTE DESCRIPTION

COREA TRANSITION (COREA.JOKRS3)

CSHEL TRANSITION (CSHEL.JOKRS3)

FAZES TRANSITION (FAZES.JOKRS3)

FERAL TRANSITION (FERAL.JOKRS3)

MOANS TRANSITION (MOANS.JOKRS3)

LANDING KMCO RUNWAYS 17L/R, 18L/R: From JOKRS on track 043° to cross TAYYE between 10000 and 12000 and at 250K, then on track 060° to ARHIP, then on track 006° to cross GIRAF at or above 8000 and at 220K, then on track 006° to DVOLA, then on track 006° to cross LYENS at 5000 and at 210K, then on track 006°. Expect RADAR vectors to final approach course.

LANDING KMCO RUNWAYS 35L/R, 36L/R: From JOKRS on track 086° to cross LORRA at 7000 and at 210K, then on heading 096°. Expect RADAR vectors to final approach course.

LANDING KLEE/KSFB/KISM/KMLB/KORL: From JOKRS on track 043° to ZALEK, then on heading 043°. Expect RADAR vectors to final approach course.

SE-3, 22 FEB 2024 to 21 MAR 2024

SE-3, 22 FEB 2024 to 21 MAR 2024

(PRIC3.PRIC3) 03NOV22

PRIC3 THREE ARRIVAL (RNAV) Transition Routes

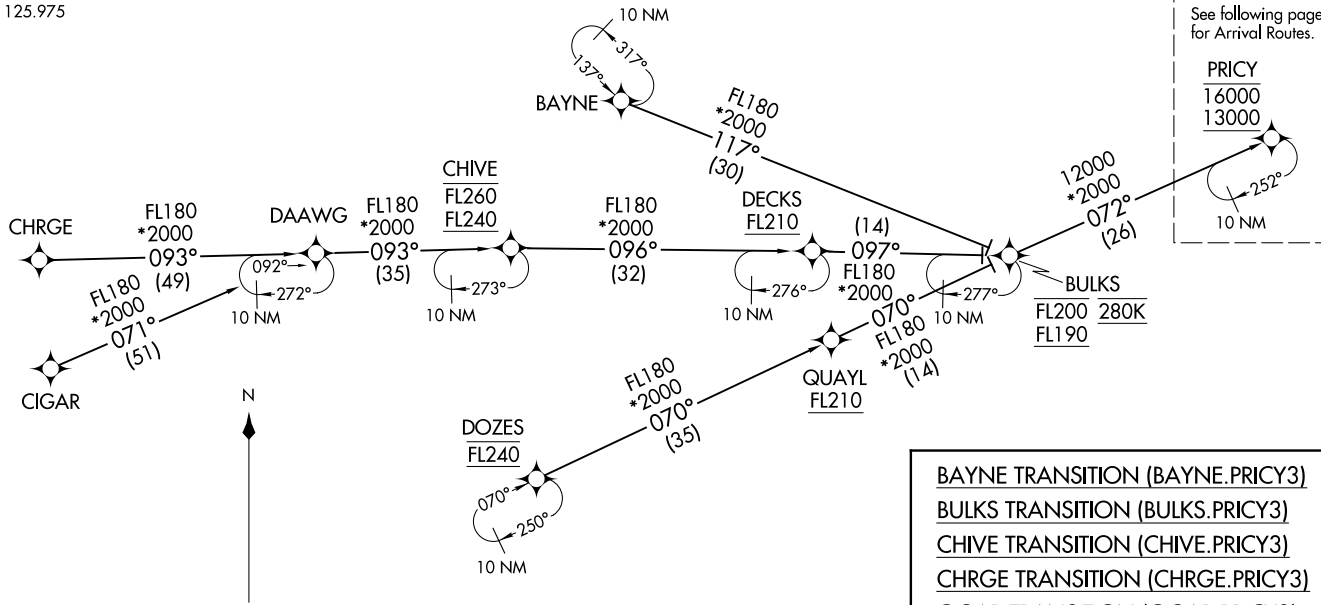
ORLANDO, FLORIDA

ORLANDO APP CON
134.05 339.8
ISM ATIS
128.775
LEE ATIS
134.325
MCO D-ATIS ARR
121.25
MLB ATIS
132.55
ORL ATIS
127.25
SFB ATIS
125.975

NOTE: Jet aircraft only.
NOTE: Do not file BULKS, CHIVE or DOZES Transitions - to be assigned by ATC.
NOTE: For vertical navigation planning, landing south, select Rwy 18R, landing north, select Rwy 36L.

RNAV 1 - DME/DME/IRU or GPS.
CHRG Transition, RNAV 1-GPS.
CIGAR Transition, RNAV 1-GPS.

RADAR required.



NOTE: Chart not to scale.

(CONTINUED ON FOLLOWING PAGE)

BAYNE TRANSITION (BAYNE.PRIC3)
BULKS TRANSITION (BULKS.PRIC3)
CHIVE TRANSITION (CHIVE.PRIC3)
CHRG TRANSITION (CHRG.PRIC3)
CIGAR TRANSITION (CIGAR.PRIC3)
DOZES TRANSITION (DOZES.PRIC3)

(PRIC3.PRIC3) 22307

AL-571 (FAA)
PRIC3 THREE ARRIVAL (RNAV) Transition Routes

ORLANDO, FLORIDA

PRICY THREE ARRIVAL (RNAV) Arrival Routes

ORLANDO, FLORIDA

ORLANDO APP CON
 134.05 339.8
 ISM ATIS
 128.775
 LEE ATIS
 134.325
 MCO D-ATIS ARR
 121.25
 MLB ATIS
 132.55
 ORL ATIS
 127.25
 SFB ATIS
 125.975

LEESBURG INTL



LYENS
5000 210K

Ldg KMCO Rwys 17L/R, 18L/R

ORLANDO SANFORD INTL



HAMMY



EXEC



DVOLA



ORLANDO INTL



GIRAF
8000 220K

RNAV 1 - DME/DME/IRU or GPS.
 RADAR required.

NOTE: Jet aircraft only.
 NOTE: For vertical navigation planning, landing south, select Rwy 18R, landing north, select Rwy 36L.

ARHIP



KISSIMMEE GATEWAY



OTKEE
11000 250K

Ldg KLEE/KSFB/KISM/KORL/KMLB

TAYYE
12000 250K
10000

EXBAN



MELBOURNE ORLANDO INTL



PRICY
16000
13000

BOCCCE



JUMBA



AMADS
9000

LORRA
7000 210K

Ldg KMCO Rwys 35L/R, 36L/R

1072°
 252°
 10 NM




206°
 024°
 10 NM



165°
 340°
 10 NM



160°
 340°
 10 NM



NOTE: Chart not to scale.

(NARRATIVE ON FOLLOWING PAGE)

SE-3, 22 FEB 2024 to 21 MAR 2024

SE-3, 22 FEB 2024 to 21 MAR 2024

PRICY THREE ARRIVAL (RNAV) Arrival Routes

ORLANDO, FLORIDA

ARRIVAL ROUTE DESCRIPTION

KMCO: From PRICY on track 071° to BOCCE, then on track 068° to JUMBA.

LANDING KMCO RUNWAYS 17L/R, 18L/R: From JUMBA on track 068° to cross TAYYE between 10000 and 12000 and at 250K, then on track 060° to ARHIP, then on track 006° to cross GIRAF at or above 8000 and at 220K, then on track 006° to DVOLA, then on track 006° to cross LYENS at 5000 and at 210K, then on track 006°. Expect RADAR vectors to final approach course.

LANDING KMCO RUNWAYS 35L/R, 36L/R: From JUMBA on track 104° to cross AMADS at or below 9000, then on track 104° to cross LORRA at 7000 and at 210K, then on heading 096°. Expect RADAR vectors to final approach course.

LANDING KLEE/KSFB/KISM/KMLB/KORL: From PRICY on track 071° to BOCCE, then on track 056° to cross OTKEE at 11000 and at 250K, then on track 056°. Expect RADAR vectors to final approach course.

SE-3, 22 FEB 2024 to 21 MAR 2024

SE-3, 22 FEB 2024 to 21 MAR 2024