

APP CRS	Rwy Idg	<b>5004</b>
<b>165°</b>	TDZE	<b>5033</b>
	Apt Elev	<b>5039</b>

# RNAV (GPS) RWY 16

MILFORD MUNI/BEN AND JUDY BRISCOE FLD (MLF)

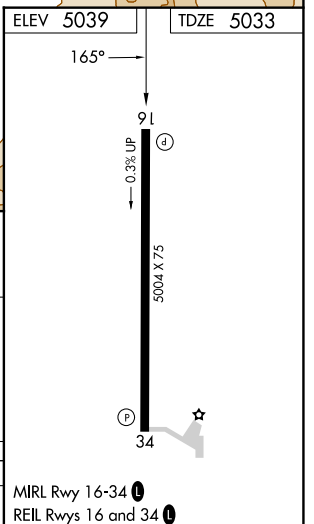
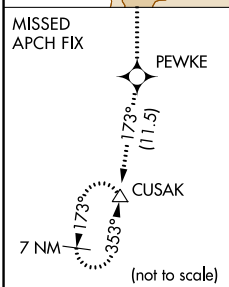
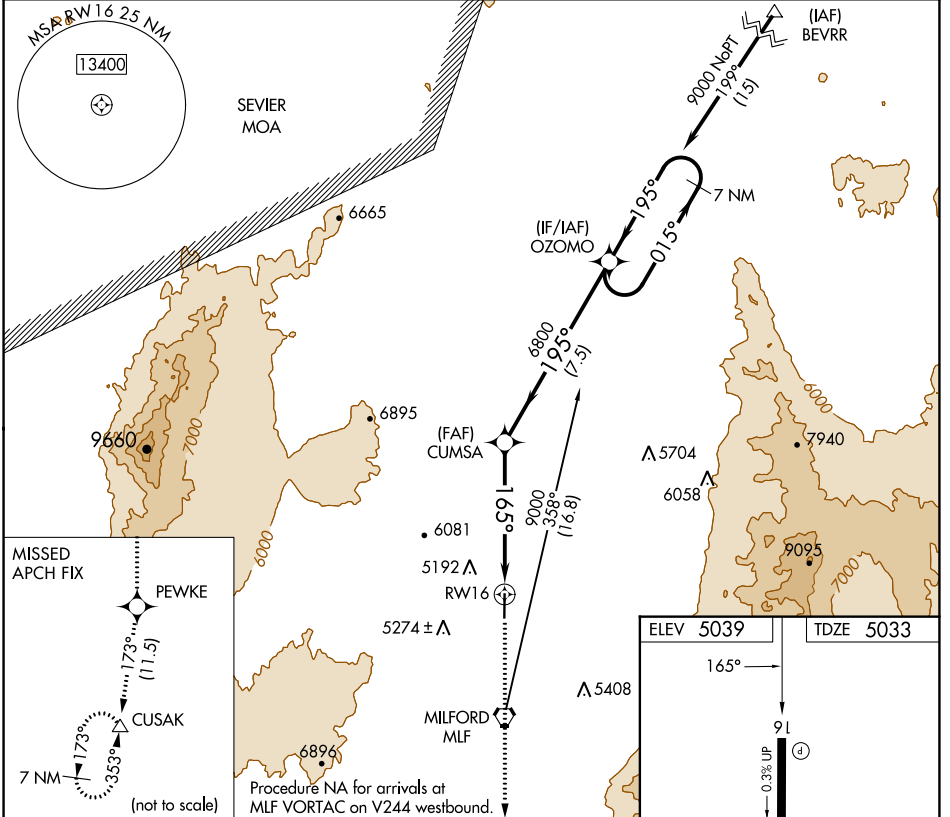
RNP APCH.

When local altimeter setting not received, use Cedar City altimeter setting and increase all MDA 200 feet and increase LNAV Cat C/D visibility 1/2 mile.

-27°C

MISSED APPROACH: Climb to 10000 direct PEWKE and on track 173° to CUSAK and hold.

ASOS <b>135.025</b>	SALT LAKE CENTER <b>125.575 379.275</b>	UNICOM <b>122.8 (CTAF)</b>
------------------------	--	-------------------------------



7 NM Holding Pattern	OZOMO	10000	PEWKE	tr 173°	CUSAK
9000	← 015°	→ 195°	195°	3.00% TCH 40	RW16
		6800	165°		
			7.5 NM	5.5 NM	
CATEGORY	A	B	C	D	
LNAV MDA	5480-1	447 (500-1)	5480-1 3/8	447 (500-1 3/8)	

SW-4, 22 FEB 2024 to 21 MAR 2024

SW-4, 22 FEB 2024 to 21 MAR 2024

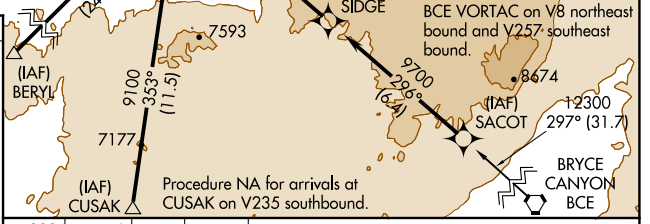
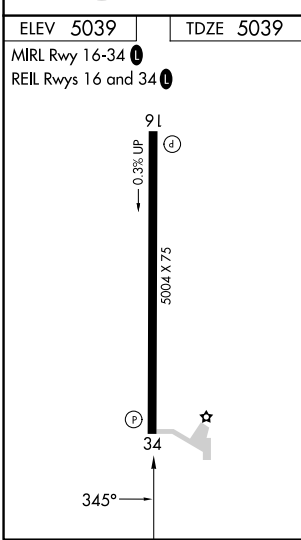
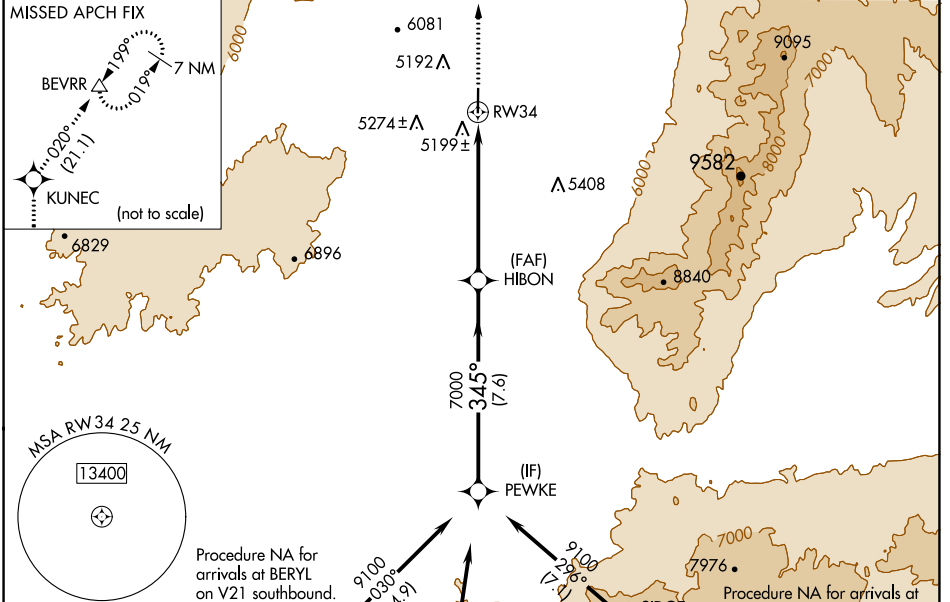
APP CRS	Rwy Idg	<b>5004</b>
<b>345°</b>	TDZE	<b>5039</b>
	Apt Elev	<b>5039</b>

# RNAV (GPS) RWY 34

MILFORD MUNI/BEN AND JUDY BRISCOE FLD (MLF)

RNP APCH.	<p>When local altimeter setting not received, use Cedar City altimeter setting and increase all MDA 180 feet; increase LNAV Cat C/D visibility ½ mile.</p> <p>☁ -27°C</p>	<p>MISSED APPROACH: Climb to 11000 direct KUNEC and on track 020° to BEVRR and hold, continue climb-in-hold to 11000.</p>
-----------	---	---

ASOS <b>135.025</b>	SALT LAKE CENTER <b>125.575 379.275</b>	UNICOM <b>122.8 (CTAF)</b>
------------------------	--	-------------------------------



CATEGORY	A	B	C	D
LNAV MDA	5460-1	421 (500-1)	5460-1¼	421 (500-1¼)

SW-4, 22 FEB 2024 to 21 MAR 2024

SW-4, 22 FEB 2024 to 21 MAR 2024

VORTAC MLF <b>112.1</b> Chan <b>58</b>	APP CRS <b>344°</b>	Rwy Idg TDZE Apt Elev <b>N/A</b> <b>N/A</b> <b>5042</b>
--	------------------------	--

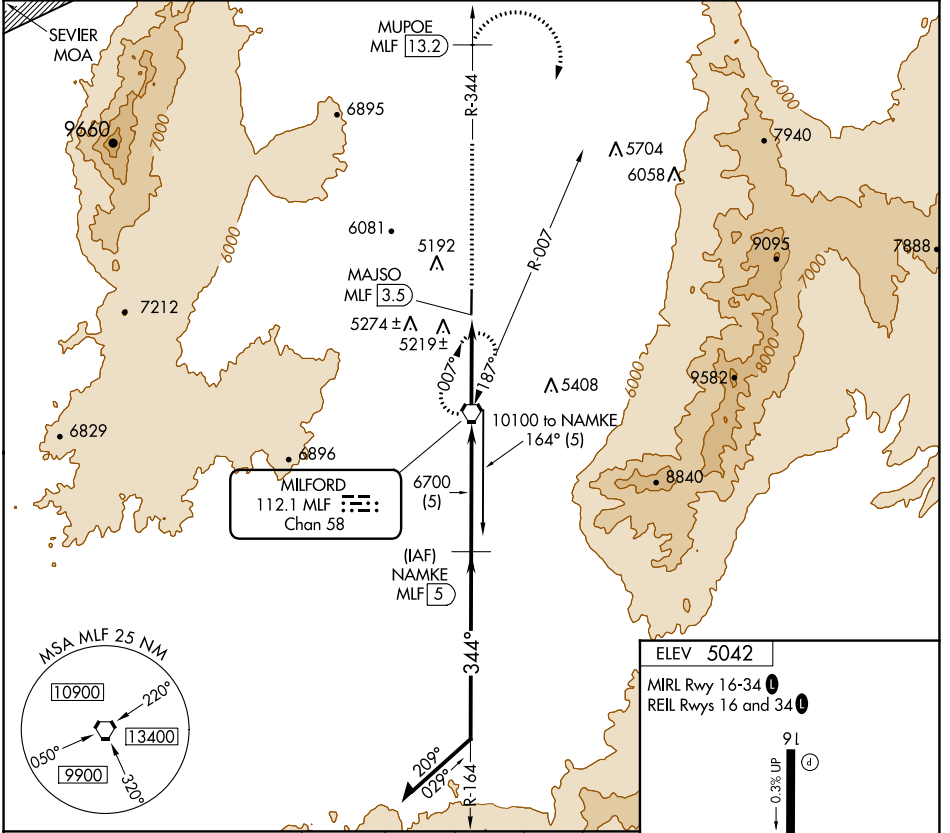
# VOR/DME-A

MILFORD MUNI/BEN AND JUDY BRISCOE FLD (MLF)

**⚠** When local altimeter setting not received, use Cedar City altimeter setting and increase all MDAs 180 feet, Circling Cat D NA. When VGSI inop, procedure NA at night. Visibility reduction by helicopters NA.

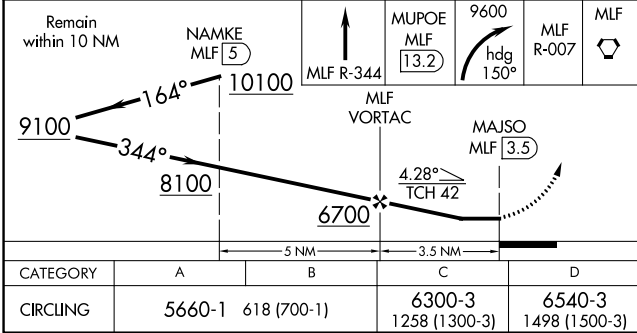
**⚠** MISSED APPROACH: Climb on MLF VORTAC R-344 to MUPOE/MLF 13.2 DME then climbing right turn to 9600 on heading 150° and MLF VORTAC R-007 to MILFORD VORTAC and hold.

ASOS <b>135.025</b>	SALT LAKE CENTER <b>125.575 379.275</b>	UNICOM <b>122.8 (CTAF) 0</b>
------------------------	--	---------------------------------



SW-4, 22 FEB 2024 to 21 MAR 2024

SW-4, 22 FEB 2024 to 21 MAR 2024



ELEV 5042

MIRL Rwy 16-34

REIL Rws 16 and 34

91

34

344°