

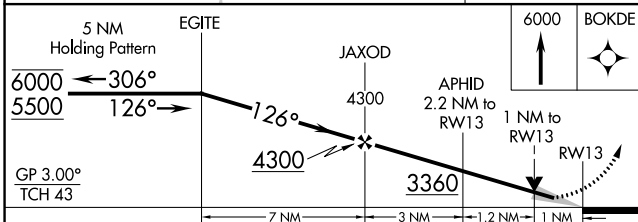
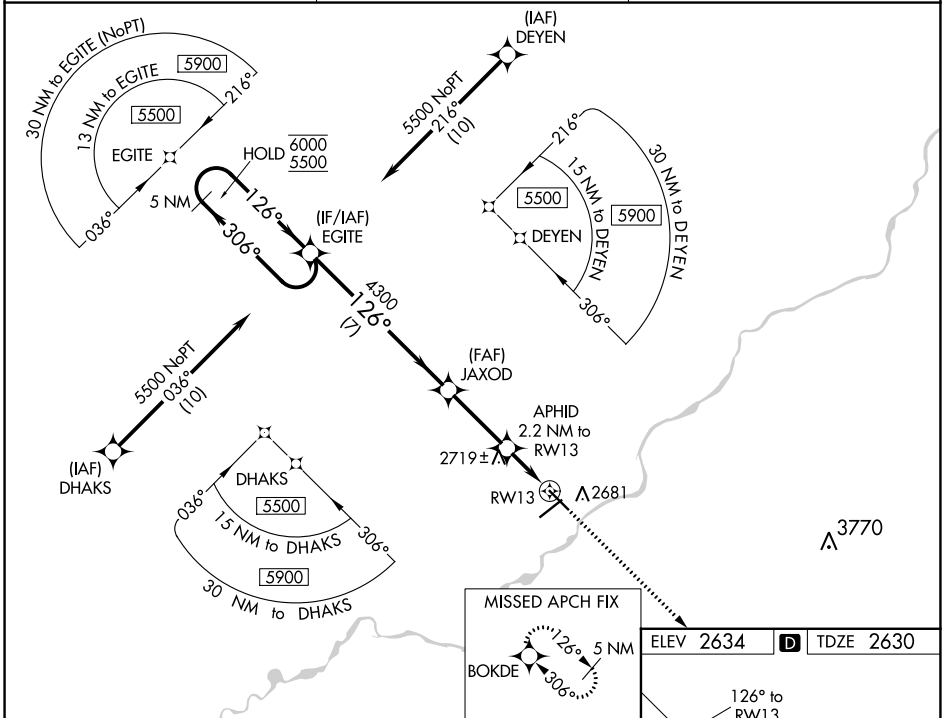
WAAS CH 97340 W13A	APP CRS 126°	Rwy Idg TDZE Apt Elev	5624 2630 2634
--	------------------------	-----------------------------	---

RNAV (GPS) RWY 13

FRANK WILEY FLD (MLS)

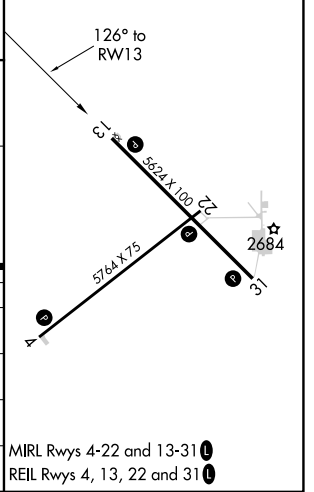
RNP APCH - GPS.	MISSED APPROACH: Climb to 6000 direct BOKDE and hold, continue climb-in-hold to 6000.
<p>⚠ For uncompensated Baro-VNAV systems, procedure NA below -24°C or above 54°C.</p>	

ASOS 135.575	SALT LAKE CENTER 126.85 305.2	UNICOM 123.0 (CTAF)
------------------------	---	-------------------------------



ELEV 2634	D TDZE 2630
-----------	--------------------

CATEGORY	A	B	C	D
LPV DA		2880-1	250 (300-1)	
LNAV/VNAV DA		2880-1	250 (300-1)	
LNAV MDA		2980-1	350 (400-1)	
C CIRCLING	3060-1 426 (500-1)	3100-1 466 (500-1)	3160-1½ 526 (600-1½)	3320-2¼ 686 (700-2¼)



NW-1, 22 FEB 2024 to 21 MAR 2024

NW-1, 22 FEB 2024 to 21 MAR 2024

WAAS CH 77924 W22A	APP CRS 223°	Rwy Idg 5764 TDZE 2630 Apt Elev 2634
--	------------------------	---

RNAV (GPS) RWY 22

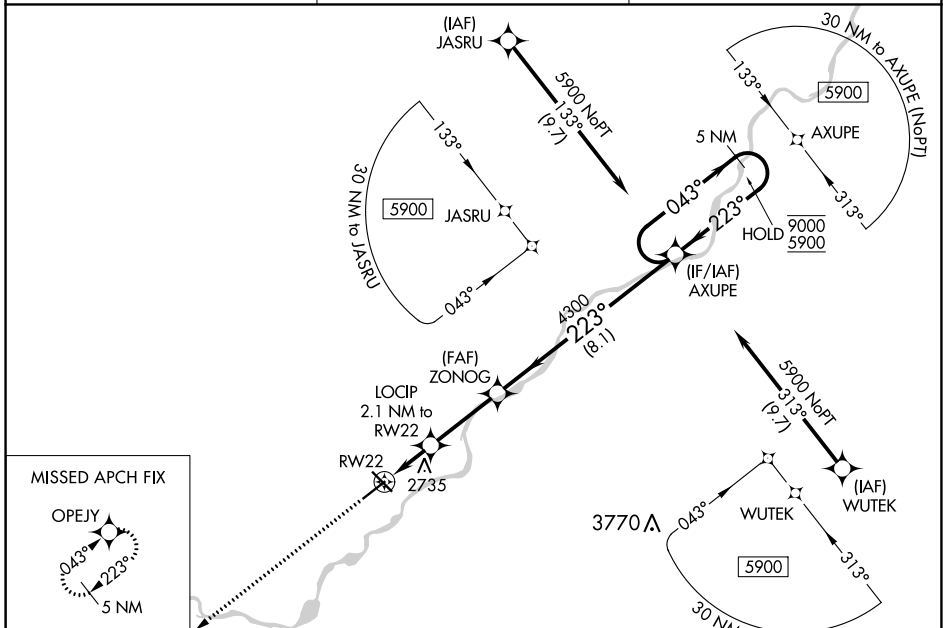
FRANK WILEY FLD (MLS)

RNP APCH-GPS.

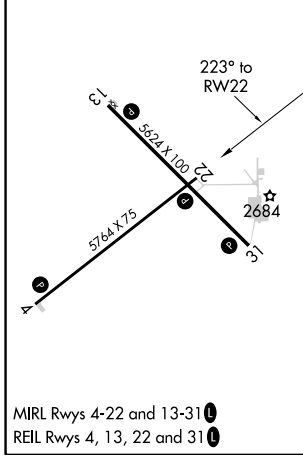
⚠ Baro-VNAV and VDP NA when using Glendive altimeter setting. For uncompensated Baro-VNAV systems, LNAV/VNAV NA below -25°C or above 54°C. When local altimeter setting not received, use Glendive altimeter setting: increase LPV and LNAV/VNAV DA to 3047 and all visibilities ½ SM. Increase all MDA 180 feet and LNAV Cat C and D visibilities ¾ SM and Circling Cat C and D visibilities ½ SM.

MISSED APPROACH: Climb to 6000 direct OPEJY and hold, continue climb-in-hold to 6000.

ASOS 135.575	SALT LAKE CENTER 126.85 305.2	UNICOM 123.0 (CTAF) 0
------------------------	---	---------------------------------



ELEV 2634	D	TDZE 2630
-----------	----------	-----------



CATEGORY	A	B	C	D
LPV DA		2880-1	250 (300-1)	
LNAV/VNAV DA		2880-1	250 (300-1)	
LNAV MDA		3000-1	370 (400-1)	
C CIRCLING	3060-1 426 (500-1)	3100-1 466 (500-1)	3160-1½ 526 (600-1½)	3320-2¼ 686 (700-2¼)

NW-1, 22 FEB 2024 to 21 MAR 2024

NW-1, 22 FEB 2024 to 21 MAR 2024

WAAS CH 42600 W04A	APP CRS 043°	Rwy Idg 5764 TDZE 2634 Apt Elev 2634
--	------------------------	---

RNAV (GPS) RWY 4

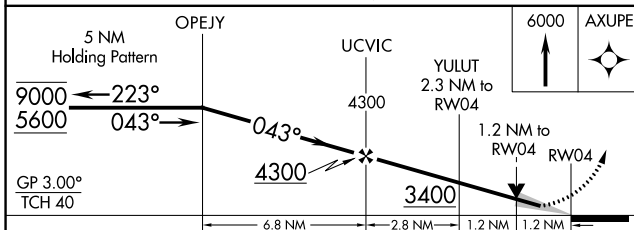
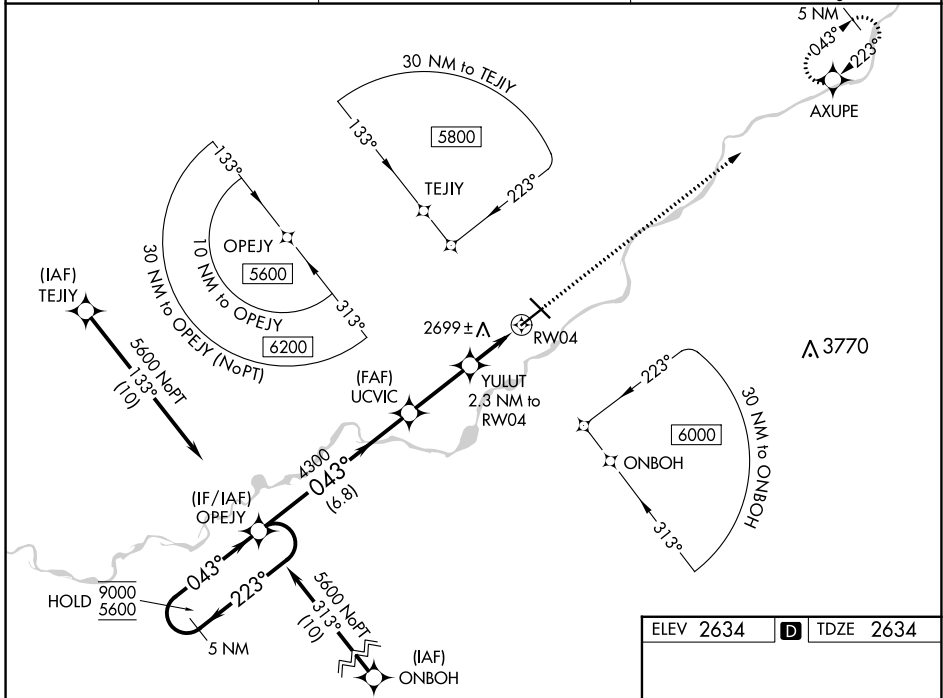
FRANK WILEY FLD (MLS)

RNP APCH-GPS.

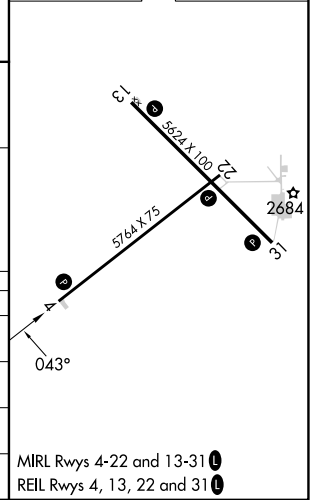
⚠ For uncompensated Baro-VNAV systems, LNAV/VNAV NA below -25°C or above 54°C. When local altimeter setting not received, use Glendive altimeter setting: increase LPV and LNAV/VNAV DA to 3051 and all visibilities ½ SM. Increase all MDA 180 feet and LNAV Cat C and D visibilities ¾ SM and Circling Cat C and D visibilities ½ SM. Baro-VNAV and VDP NA when using Glendive altimeter setting.

MISSED APPROACH: Climb to 6000 direct AXUPE and hold, continue climb-in-hold to 6000.

ASOS 135.575	SALT LAKE CENTER 126.85 305.2	UNICOM 123.0 (CTAF) 0
------------------------	---	---------------------------------



ELEV 2634	D TDZE 2634
-----------	--------------------



CATEGORY	A	B	C	D
LPV DA		2884-1	250 (300-1)	
LNAV/VNAV DA		2884-1	250 (300-1)	
LNAV MDA	3040-1	406 (500-1)	3040-1 1/8	406 (500-1 1/8)
C CIRCLING	3060-1 426 (500-1)	3100-1 466 (500-1)	3160-1 1/2 526 (600-1 1/2)	3320-2 1/4 686 (700-2 1/4)

MIRL Rwy 4-22 and 13-31 **0**
REIL Rwy 4, 13, 22 and 31 **0**

NW-1, 22 FEB 2024 to 21 MAR 2024

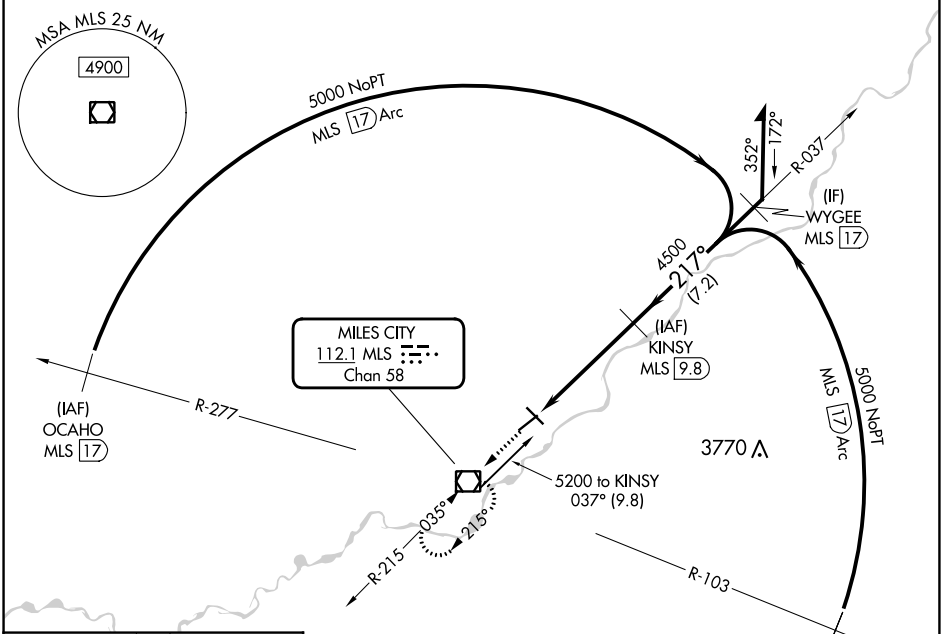
NW-1, 22 FEB 2024 to 21 MAR 2024

VOR/DME MLS 112.1 Chan 58	APP CRS 217°	Rwy Idg TDZE Apt Elev	5764 2630 2634
---	------------------------	-----------------------------	---

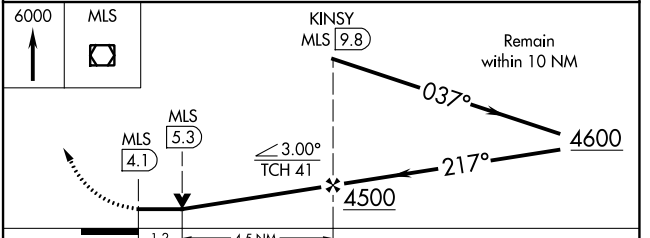
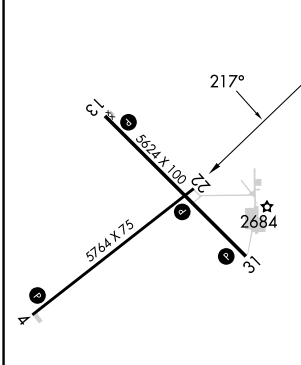
VOR RWY 22
FRANK WILEY FLD (MLS)

DME required.	MISSED APPROACH: Climb to 6000 direct MLS VOR/DME and hold, continue climb-in-hold to 6000.
<p>▼ When local altimeter setting not received, use Glendive altimeter setting and increase all MDA 180 feet and all Cat C and D visibilities ½ SM.</p>	

ASOS 135.575	SALT LAKE CENTER 126.85 305.2	UNICOM 123.0 (CTAF) 0
------------------------	---	---------------------------------



ELEV 2634	D	TDZE 2630
-----------	---	-----------



CATEGORY	A	B	C	D
S-22	3060-1	430 (500-1)	3060-1½	430 (500-1½)
<input checked="" type="checkbox"/> CIRCLING	3060-1 426 (500-1)	3100-1 466 (500-1)	3160-1½ 526 (600-1½)	3320-2½ 686 (700-2½)

NW-1, 22 FEB 2024 to 21 MAR 2024

NW-1, 22 FEB 2024 to 21 MAR 2024

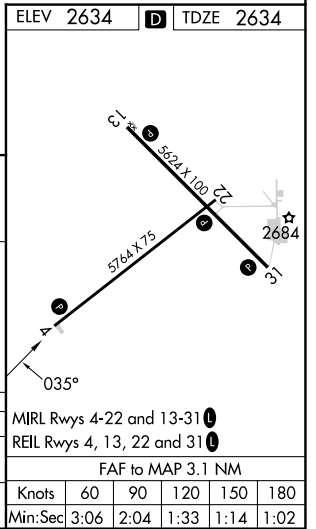
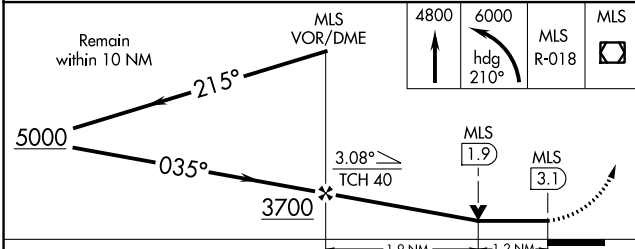
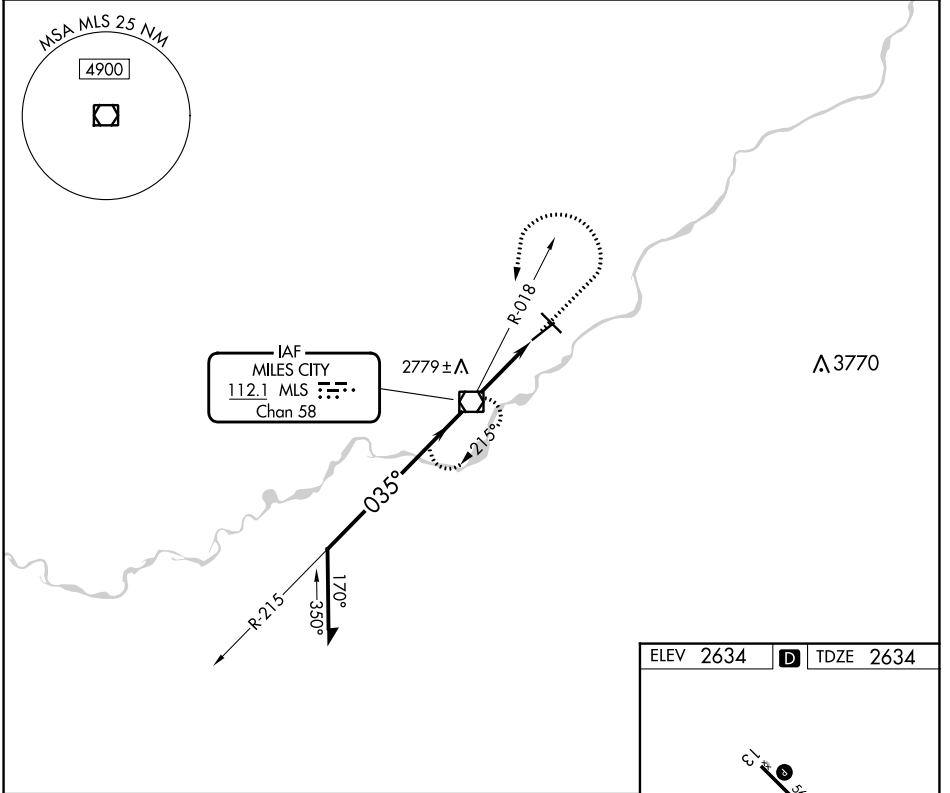
VOR/DME MLS 112.1 Chan 58	APP CRS 035°	Rwy Idg 5764 TDZE 2634 Apt Elev 2634
---	------------------------	---

VOR RWY 4
FRANK WILEY FLD (MLS)

⚠ When local altimeter setting not received, use Glendive altimeter setting and increase all MDA 180 feet and all Cat C and D visibilities ½ SM.

MISSED APPROACH: Climb to 4800. Then climbing left turn to 6000 on heading 210° and MLS R-018 to MLS VOR/DME and hold. Continue climb-in-hold to 6000.

ASOS 135.575	SALT LAKE CENTER 126.85 305.2	UNICOM 123.0 (CTAF)
------------------------	---	-------------------------------



CATEGORY	A	B	C	D
S-4	3060-1	426 (500-1)	3060-1¼	426 (500-1¼)
C CIRCLING	3060-1 426 (500-1)	3100-1 466 (500-1)	3160-1½ 526 (600-1½)	3320-2¼ 686 (700-2¼)

MRL Rwy 4-22 and 13-31	
REL Rwy 4, 13, 22 and 31	
FAF to MAP 3.1 NM	
Knots	60 90 120 150 180
Min:Sec	3:06 2:04 1:33 1:14 1:02

NW-1, 22 FEB 2024 to 21 MAR 2024

NW-1, 22 FEB 2024 to 21 MAR 2024