

POTOMAC APP CON  
 133.0 288.35  
 IAD D-ATIS  
 134.85  
 DULLES TOWER  
 120.1 317.8 (Rwy 1R/19L)  
 120.25 348.6 (Rwy 1C/19C)  
 134.425 348.6 (Rwy 1L/19R, 12/30)

NOTE: RADAR required.  
 NOTE: RNAV 1.  
 NOTE: DME/DME/IRU or GPS required.  
 NOTE: Turbojet and turboprop aircraft only.  
 NOTE: For aircraft capable of 180K or greater.



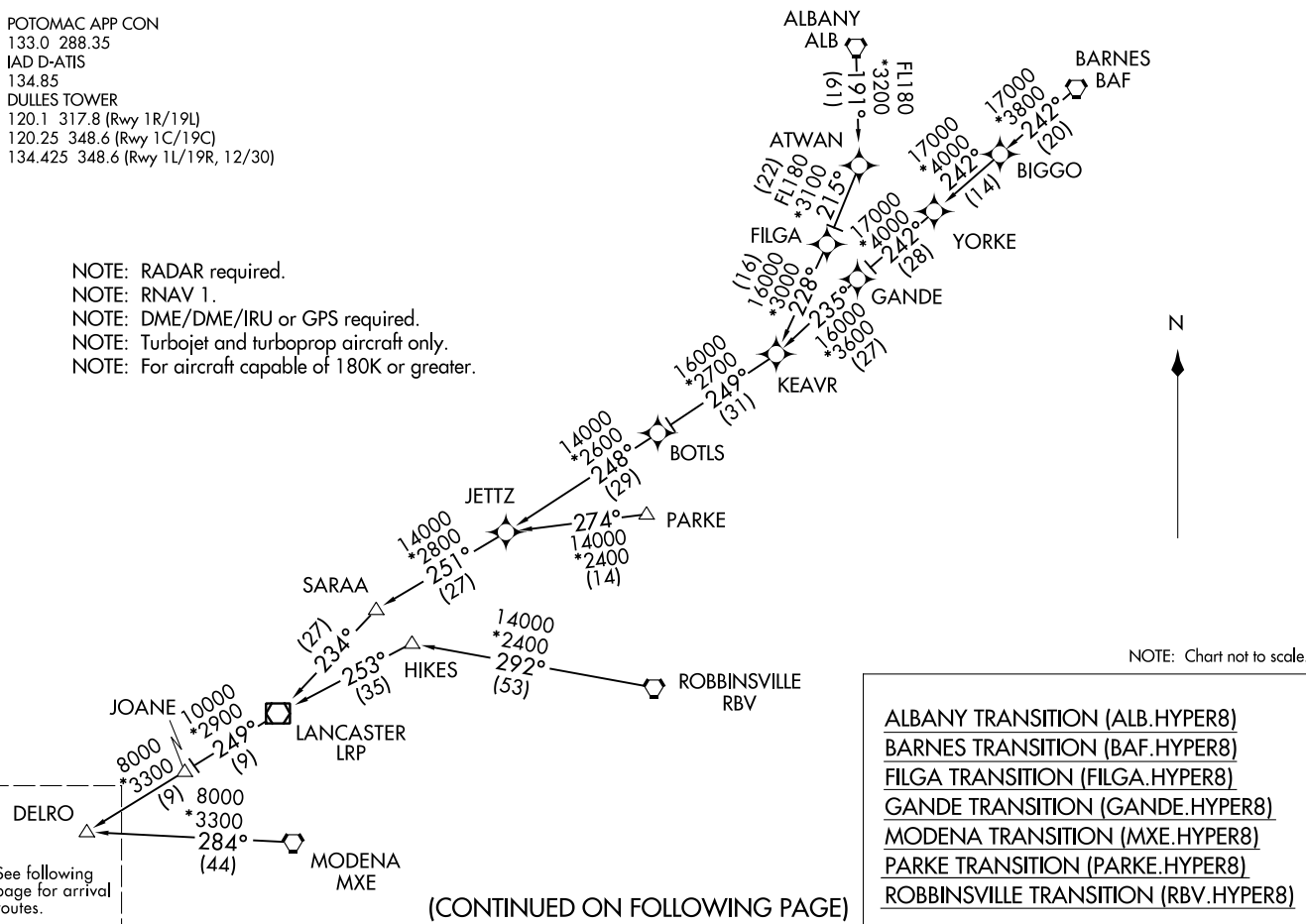
NOTE: Chart not to scale.

- ALBANY TRANSITION (ALB.HYPER8)
- BARNES TRANSITION (BAF.HYPER8)
- FILGA TRANSITION (FILGA.HYPER8)
- GANDE TRANSITION (GANDE.HYPER8)
- MODENA TRANSITION (MXE.HYPER8)
- PARKE TRANSITION (PARKE.HYPER8)
- ROBBINSVILLE TRANSITION (RBV.HYPER8)

(CONTINUED ON FOLLOWING PAGE)

HYPER EIGHT ARRIVAL (RNAV) Transition Routes  
 (DELRO.HYPER8) 31DEC20  
 WASHINGTON, DC

HYPER EIGHT ARRIVAL (RNAV) Transition Routes  
 24025  
 AL-5100 (FAA)  
 WASHINGTON, DC



# HYPER EIGHT ARRIVAL (RNAV) Arrival Routes

WASHINGTON, DC

POTOMAC APP CON

133.0 288.35

IAD D-ATIS

134.85

DULLES TOWER

120.1 317.8 (Rwy 1R/19L)

120.25 348.6 (Rwy 1C/19C)

134.425 348.6 (Rwy 1L/19R, 12/30)

NOTE: RADAR required.

NOTE: RNAV 1.

NOTE: DME/DME/IRU or GPS required.

NOTE: Turbojet and turboprop aircraft only.

NOTE: For aircraft capable of 180K or greater.



LIRCH 14000

DELRO

HYPER 10000 250K

7 NM

069° (265K)

(5)

4 NM

069° (210K)

(18)

211°

216°

(18)

(18)

(18)

(18)

(18)

(18)

(18)

(18)

(18)

(18)

(18)

(18)

(18)

(18)

(18)

(18)

(18)

(18)

(18)

(18)

(18)

(18)

(18)

(18)

(18)

(18)

(18)

(18)

(18)

(18)

(18)

(18)

(18)

(18)

(18)

(18)

(18)

(18)

(18)

(18)

(18)

(18)

(18)

(18)

(18)

(18)

(18)

NE-3, 22 FEB 2024 to 21 MAR 2024

NE-3, 22 FEB 2024 to 21 MAR 2024

NOTE: Chart not to scale.

# HYPER EIGHT ARRIVAL (RNAV) Arrival Routes

WASHINGTON, DC

ARRIVAL ROUTE DESCRIPTION

IAD: From DELRO on track 249° to cross LIRCH at 14000, then on track 249° to BINNS, then on track 249° to cross HYPER at 10000 and at 250K.

Landing IAD Rwy 1C/R: From HYPER on track 211° to cross SIGBE at 7000, then on track 189° to cross MOWAT at 5000, then on track 189° to cross HUSEL at 4000, then on track 190° to YACKK, then on track 191° to TICON, then on track 191°. Expect RADAR vectors to final approach course.

Landing IAD Rwy 1L: From HYPER on track 220° to cross CRAIN at 6000, then on track 214° to cross KUKSE at 5000, then on track 191° to ELISN, then on track 191° to MIKEJ, then on track 191°. Expect RADAR vectors to final approach course.

Landing IAD Rwy 19C: From HYPER on track 219° to cross COVUR at 7000, then on track 191° to DIMKE, then on track 191° to cross HOOSR at or above 5000. Expect ILS or LOC Rwy 19C approach.

Landing IAD Rwy 19L: From HYPER on track 216° to cross OOGLE at or below 5000, then on track 217° to cross LITEY at 4000, then on track 191° to cross YYANG at 4000, then on track 191° to cross DADEY at or above 3000. Expect ILS or LOC Rwy 19L approach.

Landing IAD Rwy 19R: From HYPER on track 220° to cross CRAIN at 6000, then on track 220° to cross REXOE at 6000, then on track 191° to cross BEEZY at or above 4000. Expect ILS or LOC Rwy 19R approach.

Landing NYG/CJR/EZF/RMN/HWY/HEF: From DELRO on track 249° to cross LIRCH at 14000, then on track 249° to BINNS, then on track 249° to cross HYPER at 10000 and at 250K, then on track 211° to cross SIGBE at 7000, then on track 189° to cross MOWAT at 5000, then on track 189° to cross HUSEL at 4000, then on track 190° to YACKK, then on track 191° to TICON, then on track 191°. Expect RADAR vectors to final approach course.

Landing MRB/JYO/FRR/OKV: From DELRO on track 249° to cross LIRCH at 14000, then on track 249° to BINNS, then on track 249° to cross HYPER at 10000 and at 250K, then on track 233° to PHATT. Then on heading 230° or as assigned by ATC. Expect RADAR vectors to final approach course.

NE-3, 22 FEB 2024 to 21 MAR 2024

NE-3, 22 FEB 2024 to 21 MAR 2024

# PRIVO THREE ARRIVAL

POTOMAC APP CON  
 133.00 288.35  
 HEF ATIS  
 125.175  
 IAD D-ATIS  
 134.85  
 NYG ATIS ★  
 263.15

PHILIPSBURG  
 115.5 PSB  
 Chan 102

JARAF  
 Expect FL180

PRIVO

DAFIX  
 Expect 12000

OVIEE  
 Expect 10000

HAGERSTOWN  
 109.8 HGR

MAPEL  
 Expect 7000

EASTERN WV RGNL/  
 SHEPHERD FLD

LEESBURG EXEC

WASHINGTON DULLES INTL

ARMEL  
 113.5 AML  
 Chan 82

MANASSAS RGNL/  
 HARRY P DAVIS FLD

NOTE: DME and RADAR required.  
 NOTE: Jet aircraft only.

QUANTICO MCAF  
 (TURNER FLD)

(NARRATIVE ON FOLLOWING PAGE)

NOTE: Chart not to scale.

# PRIVO THREE ARRIVAL

NE-3, 22 FEB 2024 to 21 MAR 2024

NE-3, 22 FEB 2024 to 21 MAR 2024

ARRIVAL ROUTE DESCRIPTION

PHILIPSBURG TRANSITION (PSB.PRIVO3): From over PSB VORTAC on PSB R-177 to PRIVO. Thence....

....from PRIVO on PSB R-177 to DAFIX, then on PSB R-177 to OVIEE, then on AML R-358 to MAPEL. Then on HGR R-141 to TWEAK. Then on heading 190° or as assigned by ATC.

LANDING RWYS 1L/C/R and 30: Expect RADAR vectors to final approach course after TWEAK.

LANDING RWYS 19L/C/R and 12: Expect RADAR vectors to final approach course after MAPEL.

LANDING KHEF and KNYG: Expect RADAR vectors to destination airport after TWEAK.

LANDING KMRB and KJYO: Expect RADAR vectors to destination airport after MAPEL.

NE-3, 22 FEB 2024 to 21 MAR 2024

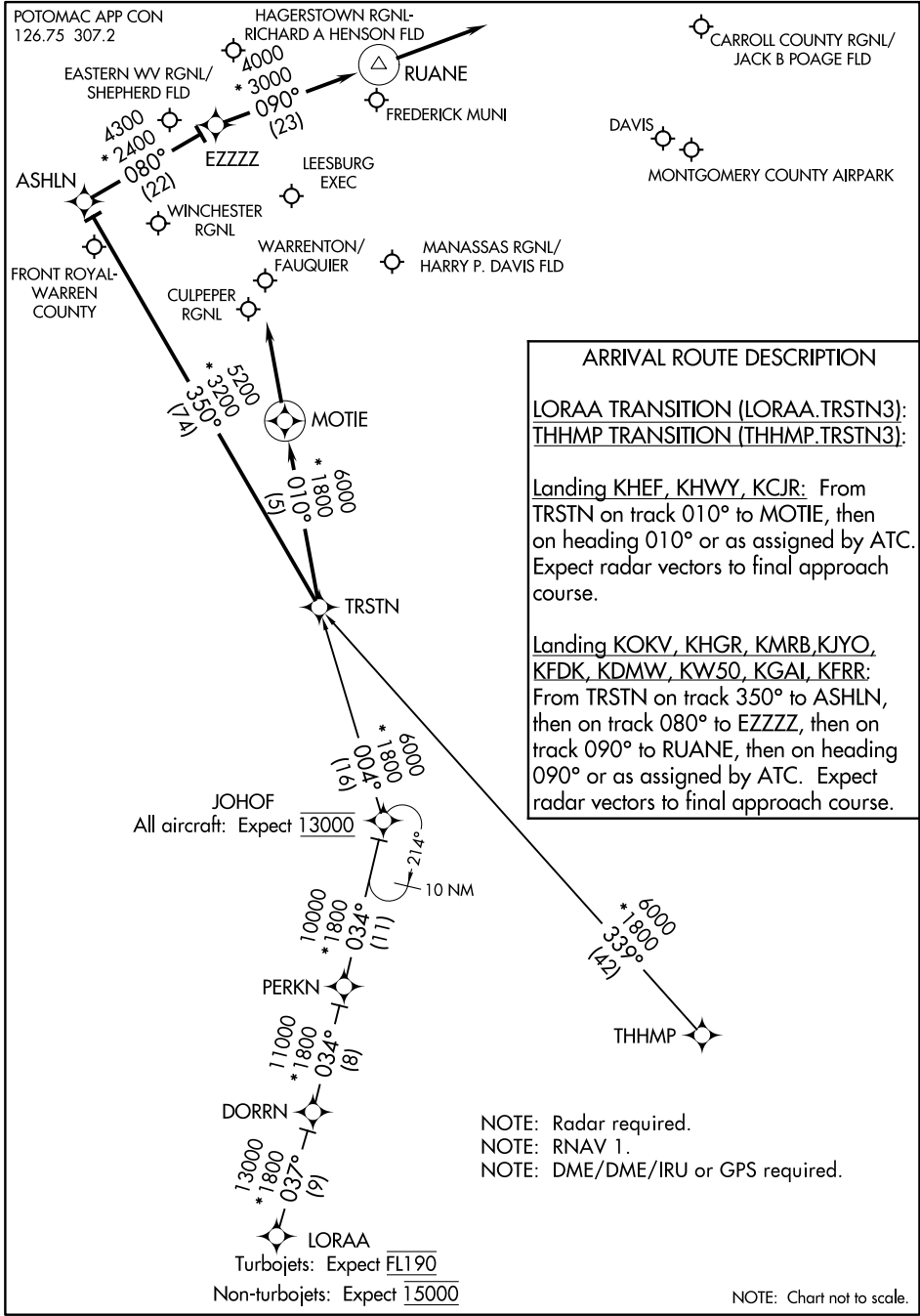
NE-3, 22 FEB 2024 to 21 MAR 2024

(TRSTN.TRSTN3) 22027

# TRSTN THREE ARRIVAL (RNAV)

AL-5326

WASHINGTON, D.C.



NE-3, 22 FEB 2024 to 21 MAR 2024

NE-3, 22 FEB 2024 to 21 MAR 2024

# TRSTN THREE ARRIVAL (RNAV)

(TRSTN.TRSTN3) 04FEB16

WASHINGTON, D.C.