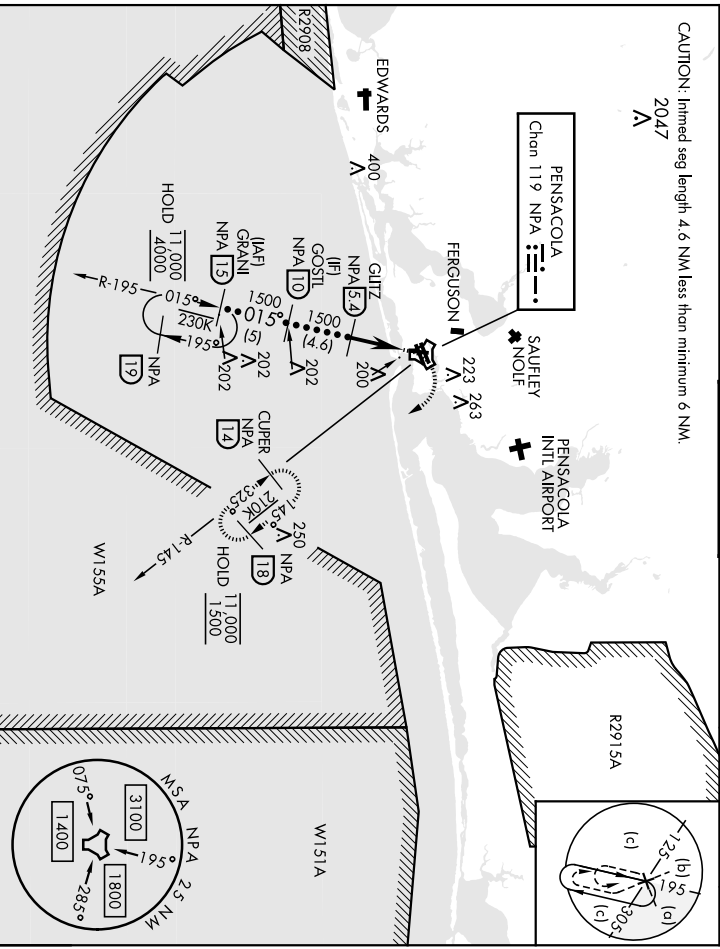


TACAN NPA Chon 119	APCH CRS 015°	Req'dg TDZE Elev 7136 28
---------------------------	----------------------	---------------------------------

AI-736 [USN]	PENSACOLA NAS [FORREST SHERMAN FLD] (KNPA)
MISSED APPROACH: Climbing right turn to 1500 via NPA TACAN R-145 to CUPER and hold.	

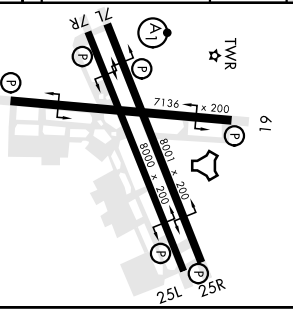
ATIS 124.35 266.8	PENSACOLA APP CON 120.65 270.8	SHERMAN TOWER 120.7 340.2	GND CON 121.7 336.4	CLNC DEL 134.1 268.7	ASR/ PAR
--------------------------	---------------------------------------	----------------------------------	----------------------------	-----------------------------	----------

CAUTION: limited seg length 4.6 NM less than minimum 6 NM.
2047
A



EMERG SAFE ALT 100 NM 3100

GRANI 15	GOSTL 10	GLITZ 5.2	GLOAM 1.5	TACAN
7900	7900	3000	TCH 55	
015°	1500	1500		
		3.9 NM	0.5	



CATEGORY	C	D	E
S-1	460-1¼	432	(500-1¼)
C CIRCLING	540-1½	580-2	552 (600-2)
	512 (600-1½)		



PENSACOLA, FLORIDA 30°21'N-87°19'W PENSACOLA NAS (FORREST SHERMAN FLD) (KNPA)
Orig 02DEC21

HI-TACAN Z RWY 1

PENSACOLA, FLORIDA

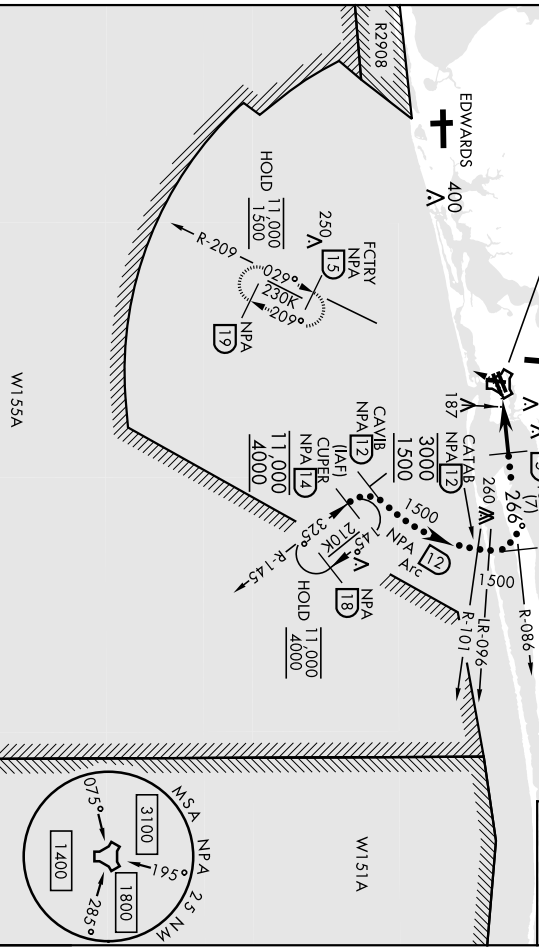
HI-TACAN Z RWY 25L
21336

TACAN NPA Chan 119	APCH CRS 266°	Rwy Idg 8000
	TDZE 22	Appr Elev 28

AI-736 [USN] PENSACOLA NAS (FOREST SHERMAN FLD) (KNPA)

RADAR required. MISSED APPROACH: Climbing left turn to 1500 via NPA TACAN R-209 to FCTRY and hold.

ATIS 124.35 266.8	PENSACOLA APP CON 120.65 270.8	SHERMAN TOWER 120.7 340.2	GND CON 121.7 336.4	CINC DEL 134.1 268.7	ASR/ PAR
--------------------------	---------------------------------------	----------------------------------	----------------------------	-----------------------------	----------



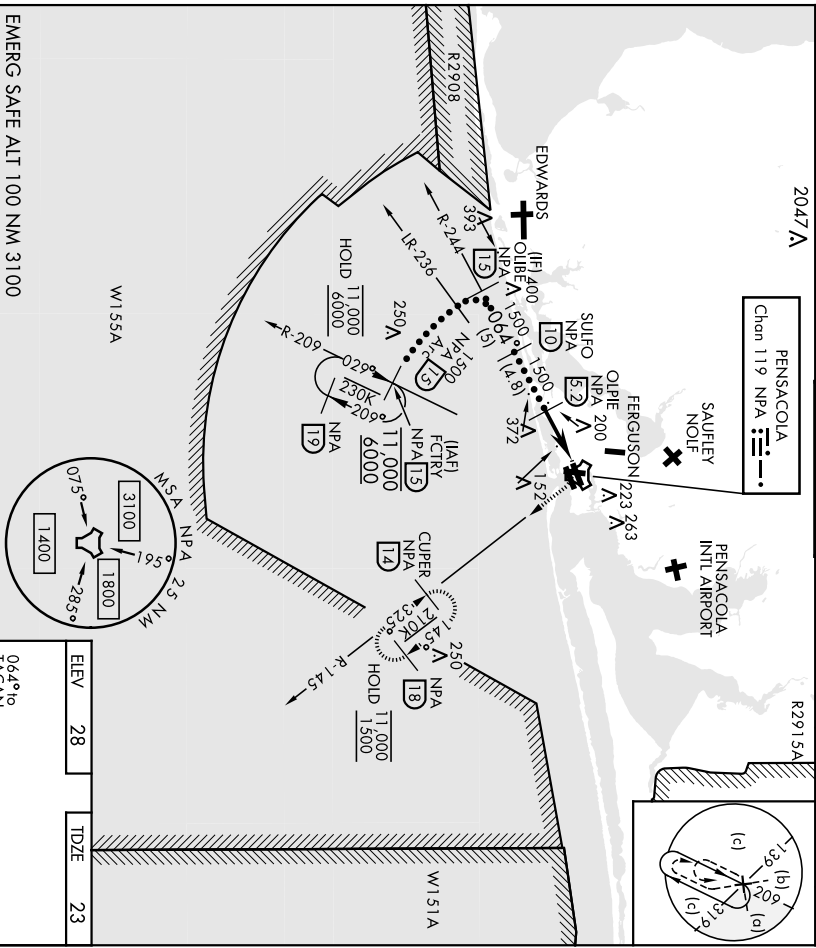
TACAN NPA Chan 119	ARCH CRS 064°	Req./Idg TDZE Elev 23 28
---------------------------	----------------------	---------------------------------

AL-1736 [USN] PENSACOLA NAS (FORREST SHERMAN FLD) (KNIPA)

RADAR required:
 * When ALS Inop, increase vis to 1 1/2 miles.

ALS-F-1
 MISSED APPROACH: Climbing right turn to 1500
 via NPA TACAN R-145 to CUPER and hold.

ATIS 124.35 266.8	PENSACOLA APP CON 120.65 270.8	SHERMAN TOWER 120.7 340.2	GND CON 121.7 336.4	CINC DEI 134.1 268.7	ASR/ PAR
--------------------------	---------------------------------------	----------------------------------	----------------------------	-----------------------------	----------



EMERG SAFE ALT 100 NM 3100	WISSA				
CATEGORY	C	D		E	
S-7L *	540-1 1/2	440-3/4	417 (500-3/4)	580-2	552 (600-2)
DIRCLING	512 (600-1 1/2)			580-2	552 (600-2)
PENSACOLA, FLORIDA	30°21'N-87°19'W		PENSACOLA NAS (FORREST SHERMAN FLD) (KNIPA)		
Orig 02DEC21					



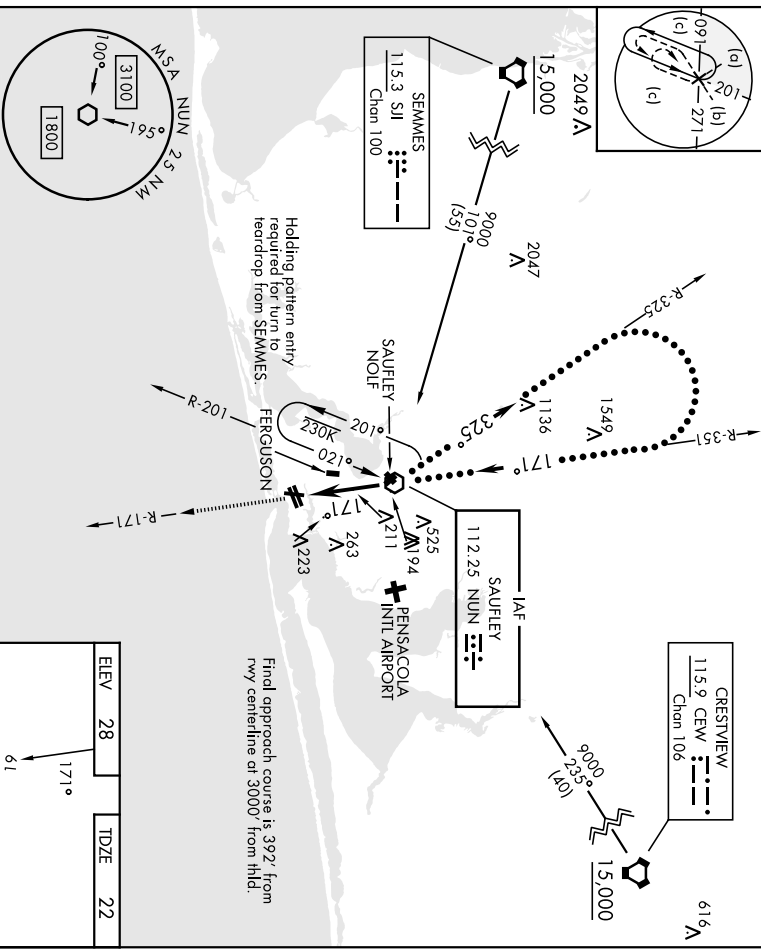
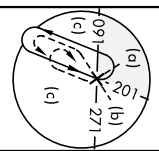
VOR NUN	APCH CRS	Rwy Idg	7136
112.25	171°	TDZE	22
		Appt Elev	28

AL-736 [USN] PENSACOLA NAS (FORREST SHERMAN FLD) (KNPA)

RAДАР required:
 Procedure not available when Pensacola South Military Operating Area (MOA) is active.

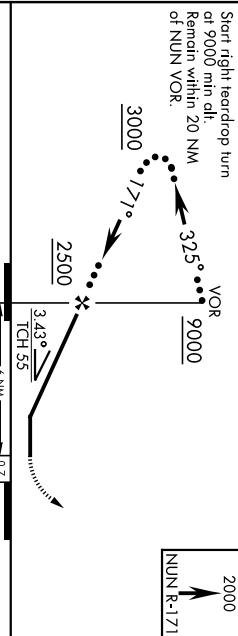
MISSED APPROACH: Climb to 2000 via NUN VOR R-171. Expect RADAR vectors within 3 NM of MAP.

ATIS	PENSACOLA APP CON	SHERMAN TOWER	GND CON	CINC DEL	ASR/ PAR
124.35 266.8	120.65 270.8	120.7 340.2	121.7 336.4	134.1 268.7	



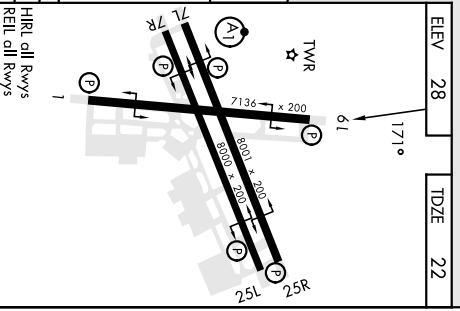
EMERG SAFE ALT 100 NM 3100

Start right teardrop turn of 9000 min. alt. Remain within 20 NM of NUN VOR.



CATEGORY	C	D	E
S-19	500-13%	478 (500-13%)	

CIRCLING	540-1 1/2	580-2	552 (600-2)
	512 (600-1 1/2)		



Final approach course is 392° from rwy centreline at 3000' from thld.

ELEV	28	TDZE	22
------	----	------	----

HRL call Rwy's	REL call Rwy's
FAF to MAP 6.0 NM	

Knots	120	140	160	180	200
Min:Sec	3:00	2:34	2:15	2:00	1:48

PENSACOLA, FLORIDA 30°21'N-87°9'W PENSACOLA NAS (FORREST SHERMAN FLD) (KNPA)
 Orig 02DEC21 **HI-VOR Z RWY 19**

ILS Y or RNAV (GPS) RWY 7L

AI-736 (USN)
PENSACOLA NAS (FOREST SHERMAN FLD) (KNPA)

LOC INPA 109.3	APCH CRS 069°	Req'd Idg TDZE Aptl Elev 23 28	8001
RNP APCH, RNAV1 -GPS for ILS procedure.	* When ALS Inop, increase vis to 3/4 mile. ** When ALS Inop, increase CAT ABCD vis to 3/4 mile. CAT E vis to 1/2 mile. *** When ALS Inop, increase vis to 1 mile.		
ATIS 124.35 266.8	PENSACOLA APP CON 120.65 270.8	SHERMAN TOWER 120.7 340.2	GND CON 121.7 336.4
		CINCL DEL 134.1 268.7	ASR/ PAR

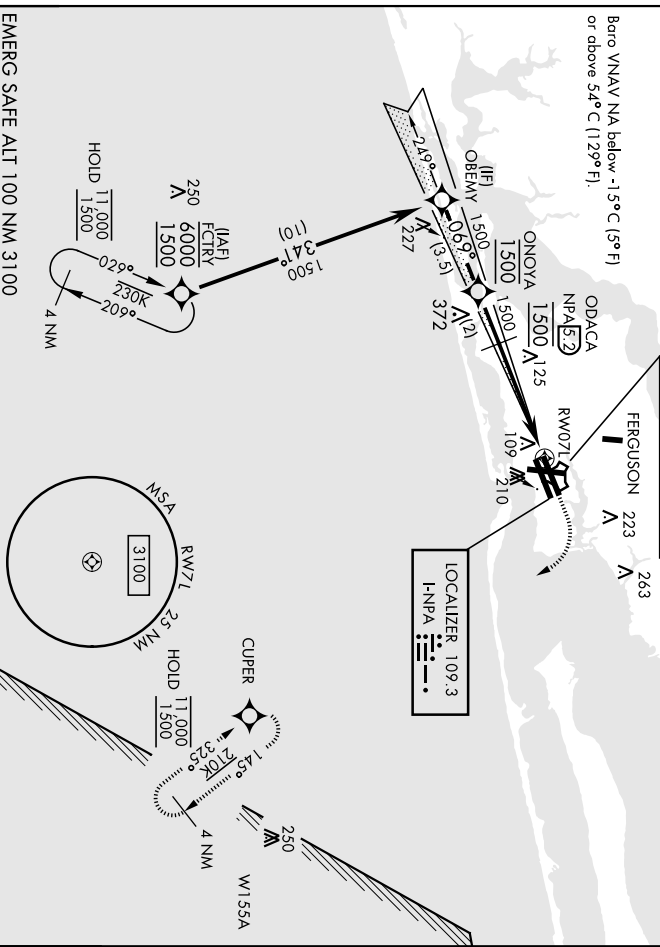
MISSED APPROACH: Climb to 600, then climbing right turn to 1500 direct CUPPER and hold.

ALS-I


PENSACOLA
Chan 119 NPA

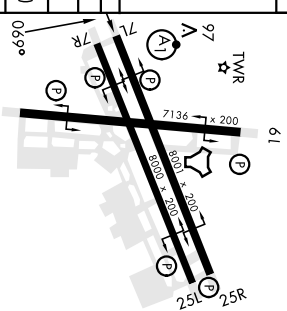
PENSACOLA
INTL AIRPORT

Baro VNAV NA below -15°C (5°F)
or above 54°C (129°F).



EMERG SAFE ALT 100 NM 3100

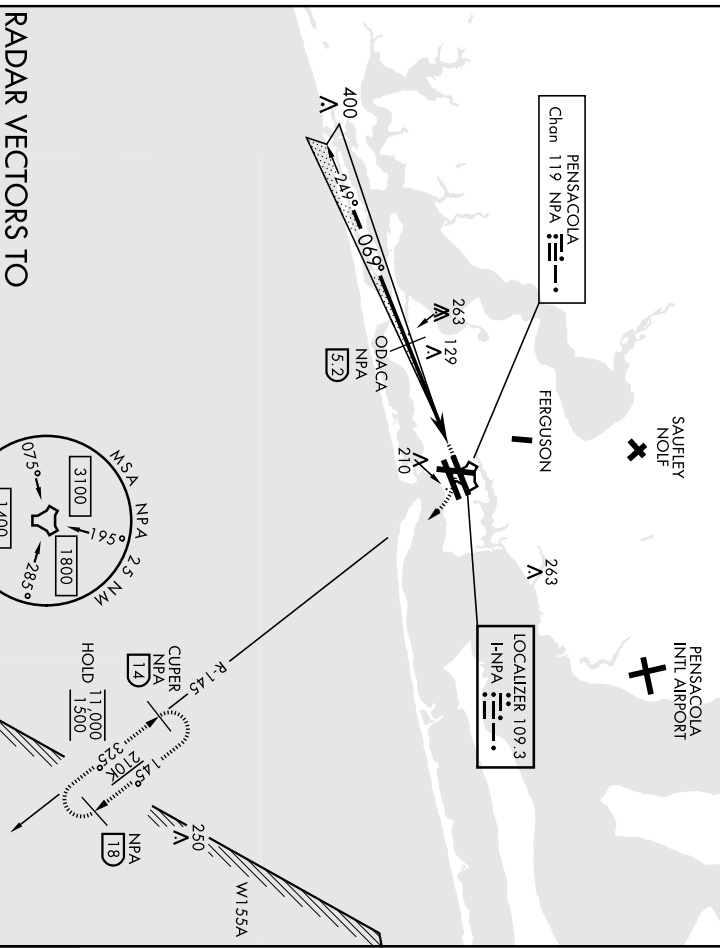
FCTRY	OBEVY	ONOYA	ODACA		
			52		
	341°	069°		069°	0.9 NM to RW7L
	6000	1500	1500	1500	
	GS 3.00°				
	TCH 55				
CATEGORY	A	B	C	D	E
S-ILS ZL *	223-1/2	200	(200-1/2)		
LNNAV/VNAV	274-1/2	280-1/2	288-1/2	299-1/2	276 (300-1/2)
DA**	251 (300-1/2)	257 (300-1/2)	265 (300-1/2)		
LNNAV MDA	380-1/2	357 (400-1/2)	380-5/8	357 (400-5/8)	
CIRCLING	520-1	492 (500-1)	540-1 1/2	580-2	552 (600-2)
			512 (600-1 1/2)		



PENSACOLA, FLORIDA
30°21'N-87°19'W
PENSACOLA NAS (FOREST SHERMAN FLD) (KNPA)
ILS Y or RNAV (GPS) RWY 7L
Amhd 4 03NOV22

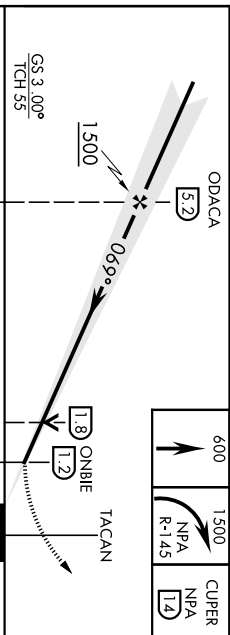
ILS Z or LOC/DME RWY 7L

LOC NPA 109.3	APCH CRS 069°	Fix/Ideg TDZE 23	Appt Elev 28	AL-736 [USN]	PENSACOLA NAS (FOREST SHERMAN FLD) (KNPA)
TACAN, DME required: ** When ALS inop, increase vis to 1/2 mile. ** ** When ALS inop, increase vis to 1 mile.				ALS-F1 [A1]	MISSED APPROACH: Climb to 600. Then climbing right turn to 1,500 via NPA R-145 to CUPER and hold.
ATIS 124.35 266.8	PENSACOLA APP CON 120.65 270.8	SHERMAN TOWER 120.7 340.2	GND CON 121.7 336.4	CINC DEL 134.1 268.7	ASR/ PAR



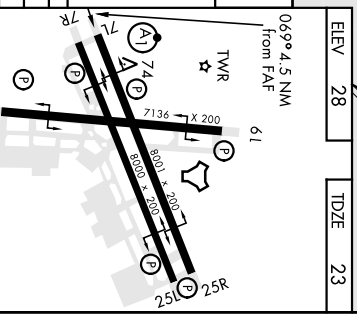
RADAR VECTORS TO FINAL APPROACH REQUIRED

EMERG SAFE ALT 100 NM 3100



CATEGORY	A	B	C	D	E
S-ILS 7L**		223-1/2	200	(200-1/2)	
S-LOC/**		400-1/2	377	(400-1/2)	
DME 7L		400-5/8	377	(400-5/8)	

☑ CIRCLING	520-1	492	(500-1)	540-1 1/2	512(600-1 1/2)	580-2	552	(600-2)
------------	-------	-----	---------	-----------	----------------	-------	-----	---------



PENSACOLA, FLORIDA 30° 21' N - 87° 19' W PENSACOLA NAS (FOREST SHERMAN FLD) (KNPA)
 Amdt 3 02DEC21
ILS Z or LOC/DME RWY 7L

PENSACOLA, FLORIDA

RNAV (GPS) RWY 1

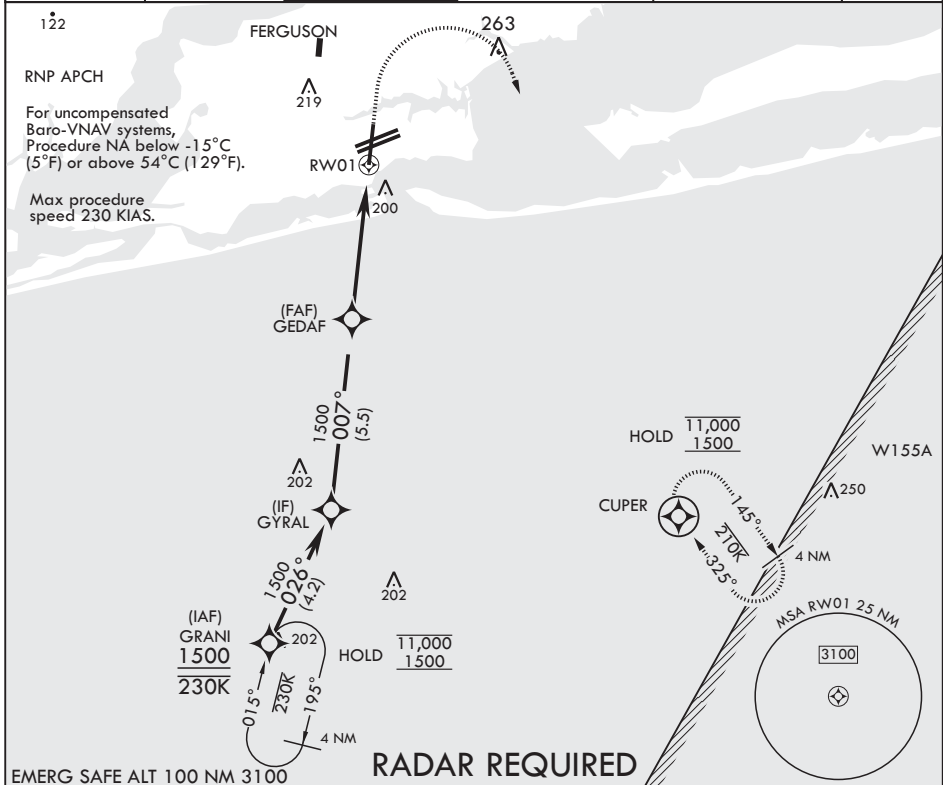
APCH CRS	Rwy Idg	7136
007°	TDZE	28
	Arprt Elev	28

AL-736 (USN)

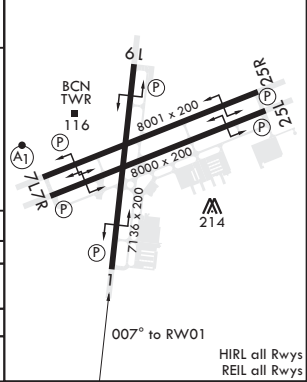
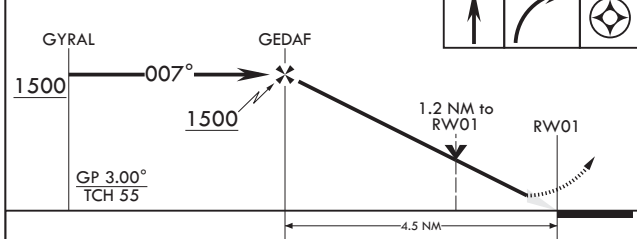
PENSACOLA NAS (FORREST SHERMAN FLD) (KNPA)

MISSED APPROACH: Climb to 800 then climbing right turn to 1500 direct CUPER and hold.

ATIS 124.35 266.8	APP CON 120.65 270.8	SHERMAN TOWER 120.7 340.2	SHERMAN GND CON 121.7 336.4	SHERMAN CLNC DEL 134.1 268.7	ASR/PAR
----------------------	-------------------------	------------------------------	--------------------------------	---------------------------------	---------



800 1500 CUPER ELEV 28 TDZE 28



CATEGORY	A	B	C	D
LNAV/VNAV DA	331-7/8 303 (400-7/8)	342-7/8 314 (400-7/8)	350-1 322 (400-1)	361-1 333 (400-1)
LNAV MDA	460-1	432 (500-1)	460-1 1/4 432 (500-1 1/4)	580-2
C CIRCLING	520-1	492 (500-1)	540-1 1/2 512 (600-1 1/2)	580-2 552 (600-2)

PENSACOLA, FLORIDA

30°21'N - 87°19'W PENSACOLA NAS (FORREST SHERMAN FLD) (KNPA)

Amdt 4 02DEC21

RNAV (GPS) RWY 1

SE-3, 22 FEB 2024 to 21 MAR 2024

SE-3, 22 FEB 2024 to 21 MAR 2024

PENSACOLA, FLORIDA

RNAV (GPS) RWY 19

APCH CRS 187°	Rwy Idg 7136
	TDZE 22
	Arpt Elev 28

AL-736 (USN)

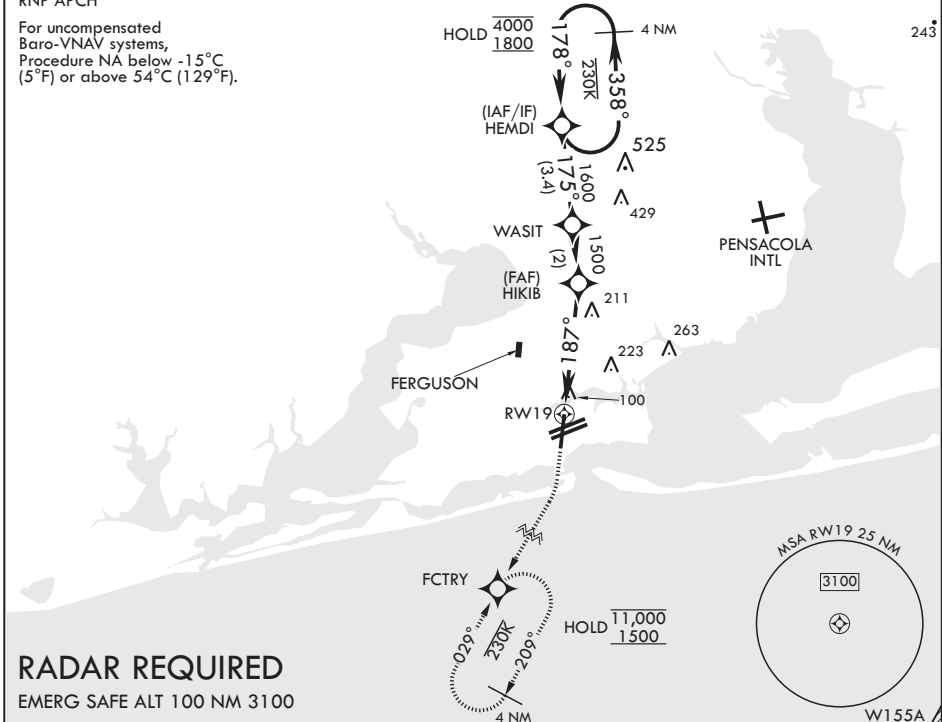
PENSACOLA NAS (FORREST SHERMAN FLD) (KNPA)

▽ MISSED APPROACH: Climb to 800 then climbing right turn to 1500 direct FCTRY and hold.

ATIS 124.35 266.8	APP CON 120.65 270.8	SHERMAN TOWER 120.7 340.2	SHERMAN GND CON 121.7 336.4	SHERMAN CLNC DEL 134.1 268.7	ASR/PAR
-----------------------------	--------------------------------	-------------------------------------	---------------------------------------	--	---------

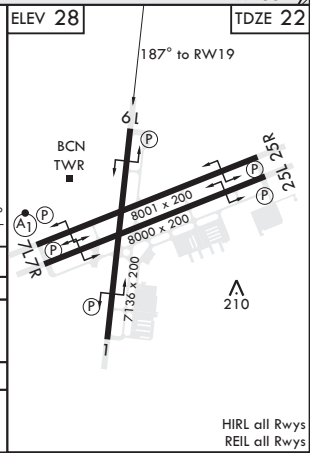
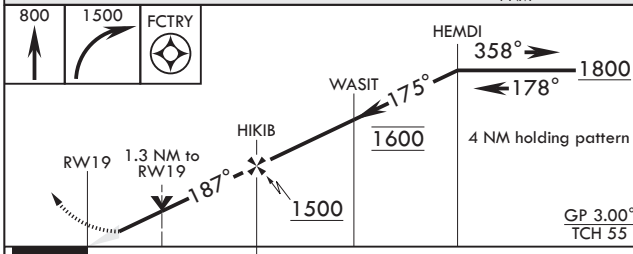
RNP APCH

For uncompensated Baro-VNAV systems, Procedure NA below -15°C (5°F) or above 54°C (129°F).



RADAR REQUIRED

EMERG SAFE ALT 100 NM 3100



CATEGORY	A	B	C	D	E
LNAV/VNAV DA	281- ³ / ₄ 259 (300- ³ / ₄)	292- ⁷ / ₈ 270 (300- ⁷ / ₈)	300- ⁷ / ₈ 278 (300- ⁷ / ₈)	311- ⁷ / ₈	289 (300- ⁷ / ₈)
LNAV MDA	500-1	478 (500-1)	500-1 ¹ / ₂	478	(500-1 ¹ / ₂)
C CIRCLING	520-1	492 (500-1)	540-1 ¹ / ₂ 512 (600-1 ¹ / ₂)	580-2	552 (600-2)

PENSACOLA, FLORIDA

30°21'N - 87°19'W PENSACOLA NAS (FORREST SHERMAN FLD) (KNPA)

Amdt 5 02DEC21

RNAV (GPS) RWY 19

SE-3, 22 FEB 2024 to 21 MAR 2024

SE-3, 22 FEB 2024 to 21 MAR 2024

PENSACOLA, FLORIDA

RNAV (GPS) RWY 25L

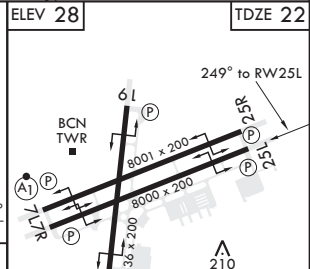
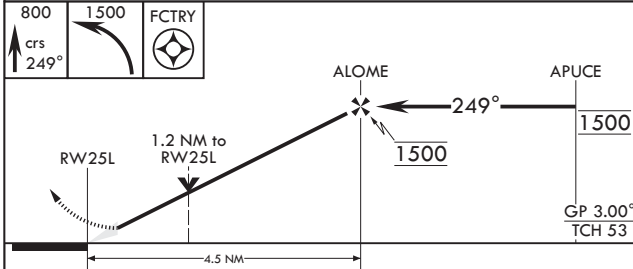
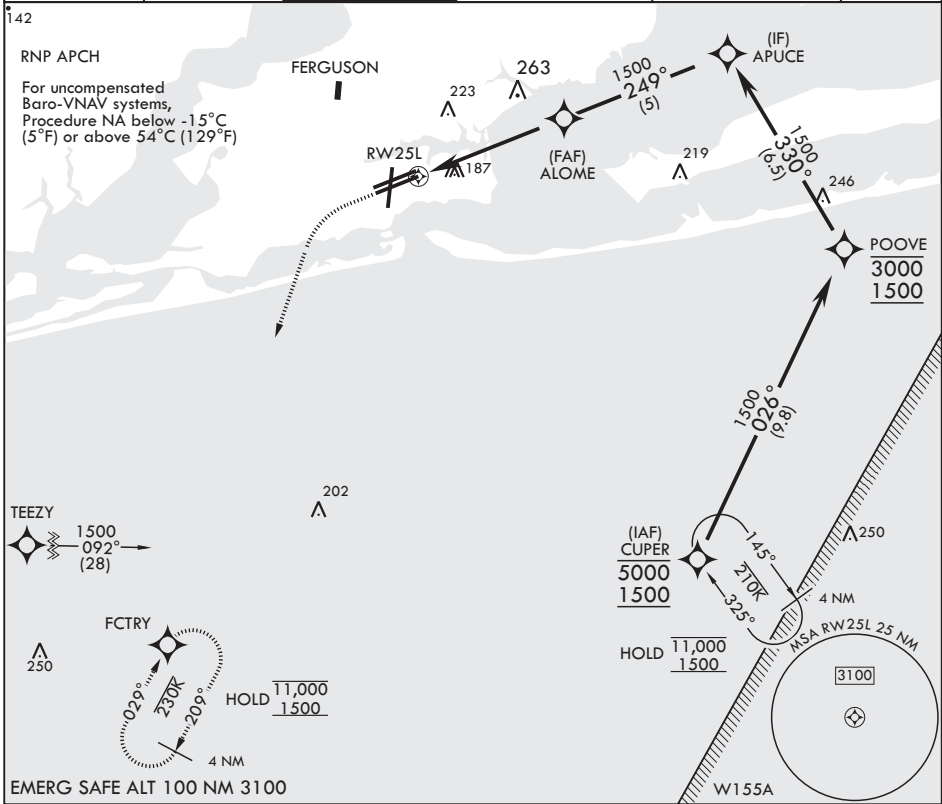
APCH CRS 249°	Rwy Idg TDZE Arprt Elev	8000 22 28
-------------------------	-------------------------------	---------------------------------------

AL-736 (USN)

PENSACOLA NAS (FORREST SHERMAN FLD) (KNPA)

▽ MISSED APPROACH: Climb to 800 then climbing left turn to 1500 direct FCTRY and hold.

ATIS 124.35 266.8	APP CON 120.65 270.8	SHERMAN TOWER 120.7 340.2	SHERMAN GND CON 121.7 336.4	SHERMAN CLNC DEL 134.1 268.7	ASR/PAR
-----------------------------	--------------------------------	-------------------------------------	---------------------------------------	--	---------



CATEGORY	A	B	C	D
LNAV/VNAV DA	440-1 418 (500-1)	440-1 418 (500-1)	440-1 418 (500-1)	440-1 418 (500-1)
LNAV MDA	440-1 418 (500-1)	440-1 418 (500-1)	440-1 418 (500-1)	440-1 418 (500-1)
C CIRCLING	520-1 492 (500-1)	540-1 512 (600-1 1/2)	580-2 552 (600-2)	

PENSACOLA, FLORIDA

30°21'N - 87°19'W PENSACOLA NAS (FORREST SHERMAN FLD) (KNPA)

Amdt 3 02DEC21

RNAV (GPS) RWY 25L

SE-3, 22 FEB 2024 to 21 MAR 2024

SE-3, 22 FEB 2024 to 21 MAR 2024

PENSACOLA, FLORIDA

RNAV (GPS) RWY 25R

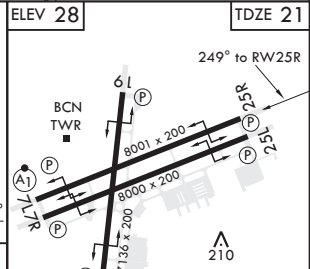
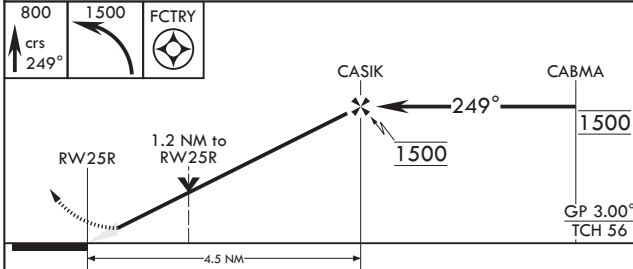
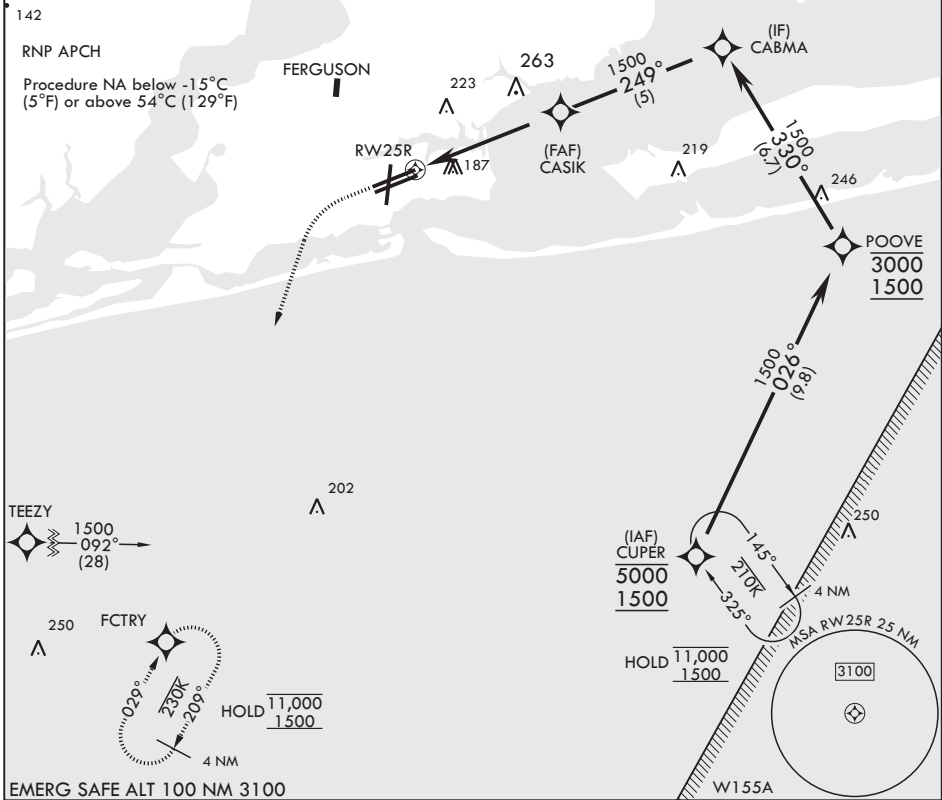
APCH CRS 249°	Rwy Idg 8001
	TDZE 21
	Arprt Elev 28

AL-736 (USN)

PENSACOLA NAS (FORREST SHERMAN FLD) (KNPA)

MISSED APPROACH: Climb to 800 then climbing left turn to 1500 direct FCTRY and hold.

ATIS 124.35 266.8	APP CON 120.65 270.8	SHERMAN TOWER 120.7 340.2	SHERMAN GND CON 121.7 336.4	SHERMAN CLNC DEL 134.1 268.7	ASR/PAR
----------------------	-------------------------	------------------------------	--------------------------------	---------------------------------	---------



CATEGORY	A	B	C	D
LNAV/VNAV DA	440-1 $\frac{1}{8}$		419	(500-1 $\frac{1}{8}$)
LNAV MDA	440-1	419 (500-1)	440-1 $\frac{1}{8}$	419 (500-1 $\frac{1}{8}$)
CIRCLING	520-1	492 (500-1)	540-1 $\frac{1}{2}$ 512 (600-1 $\frac{1}{2}$)	580-2 552 (600-2)

PENSACOLA, FLORIDA

30°21'N - 87°19'W PENSACOLA NAS (FORREST SHERMAN FLD) (KNPA)

Amdt 7 02DEC21

RNAV (GPS) RWY 25R

SE-3, 22 FEB 2024 to 21 MAR 2024

SE-3, 22 FEB 2024 to 21 MAR 2024

HIRL all Rwys
REIL all Rwys

PENSACOLA, FLORIDA

RNAV (GPS) RWY 7R

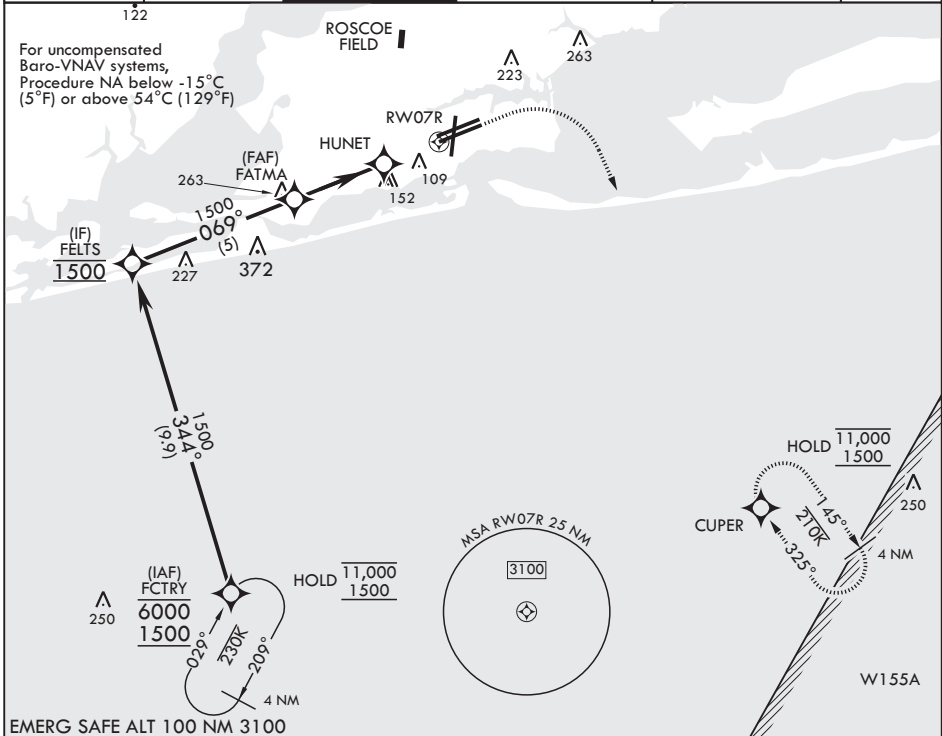
APCH CRS	Rwy Idg	8000
069°	TDZE	25
	Arprt Elev	28

AL-736 (USN)

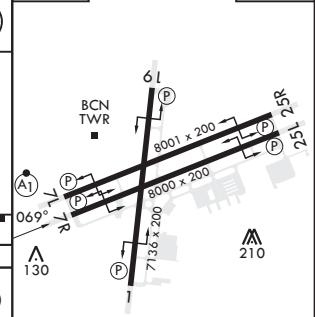
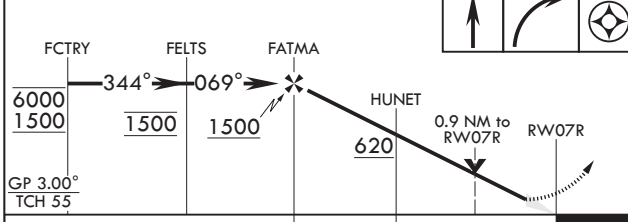
PENSACOLA NAS (FORREST SHERMAN FLD) (KNPA)

RNP APCH	MISSED APPROACH: Climb to 800 then climbing right turn to 1500 direct CUPER and hold.
RADAR required	

ATIS	APP CON	SHERMAN TOWER	SHERMAN GND CON	SHERMAN CLNC DEL	ASR/PAR
124.35 266.8	120.65 270.8	120.7 340.2	121.7 336.4	134.1 268.7	



800	1500	CUPER	ELEV 28	TDZE 25
-----	------	-------	---------	---------



CATEGORY	A	B	C	D	E
LNAV/VNAV DA	275-¾ 250 (300-¾)	280-¾ 255 (300-¾)	288-⅞ 263 (300-⅞)	299-⅞	274 (300-⅞)
LNAV MDA	380-1		355	(400-1)	
C CIRCLING	520-1	492 (500-1)	540-1½ 512 (600-1½)	580-2 552 (600-2)	

HIRL all Rwys
REIL all Rwys

PENSACOLA, FLORIDA

30°21'N - 87°19'W PENSACOLA NAS (FORREST SHERMAN FLD) (KNPA)

Amdt 3 03NOV22

RNAV (GPS) RWY 7R

SE-3, 22 FEB 2024 to 21 MAR 2024

SE-3, 22 FEB 2024 to 21 MAR 2024

TACAN NPA
Chan 119

AL-736 [USN]

TACAN Y RWY 1

APCH CRS
015°
TDZE
25
Appt Elev
28

PENSACOLA NAS (FOREST SHERMAN FLD) (KNPA)

ATIS
124.35 266.8

PENSACOLA APP CON
120.65 270.8

SHERMAN TOWER
120.7 340.2

GND CON
121.7 336.4

CINC DEL
134.1 268.7

ASR/
PAR

CAUTION: Intermediate seg length 4.6 NM
is less than minimum 6 NM.

SAUFLEY
X NOLE

1900
Pt Required
Whitting
Chan 70 NSE

FERGUSON
223
263

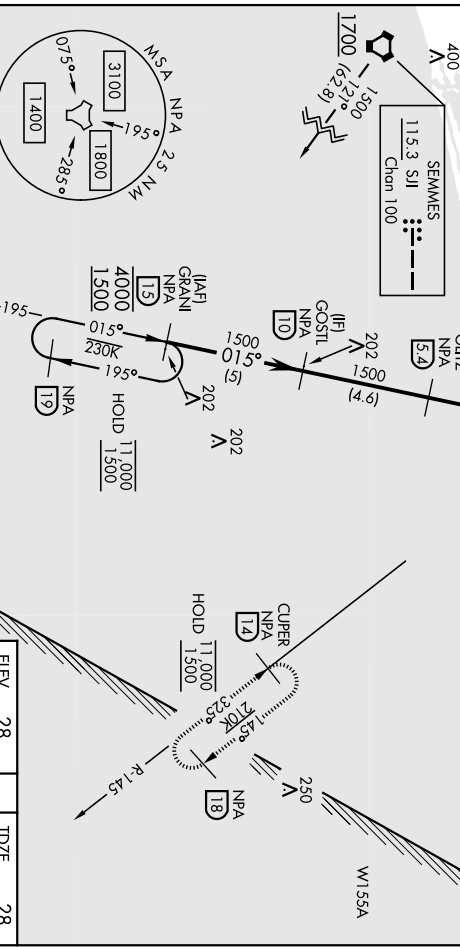
PENSACOLA
Chan 119 NPA

749

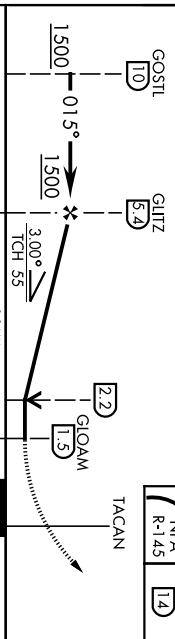
SEMMESES
115.3 SII
Chan 100

Aircraft arriving from SJI do not descend
to 1500 ft until 40 NM past SII VORTAC
unless directed by ATIS.

Aircraft arriving from NSE do not descend
to 1500 ft until 25 NM past NSE TACAN
unless directed by ATIS.

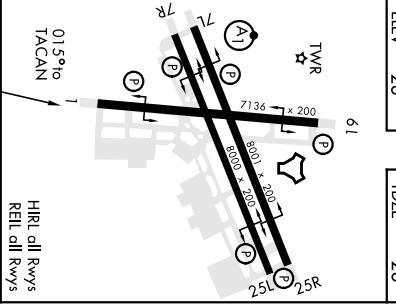


EMERG SAFE ALT 100 NM 3100



CATEGORY	A	B	C	D	E
S-1	460-1 432 (500-1)	460-1 432 (500-1)	460-1 432 (500-1)	460-1 432 (500-1)	460-1 432 (500-1)

CIRCLING	520-1 492 (500-1)	540-1 1/2 (500-1)	580-2 552 (600-2)
	512 (600-1 1/2)	512 (600-1 1/2)	512 (600-1 1/2)



PENSACOLA, FLORIDA
30°21'N-87°19'W
PENSACOLA NAS (FOREST SHERMAN FLD) (KNPA)
HIREL all Rwy's
REIL all Rwy's
Orig 02DEC21

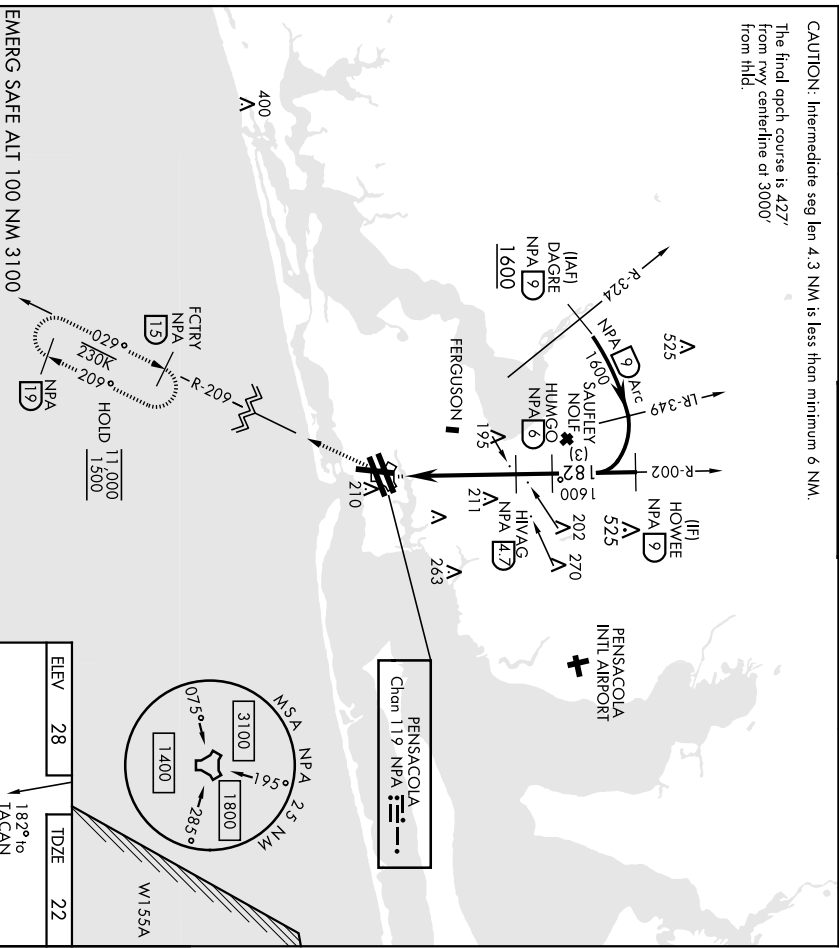
TACAN Y RWY 1

TACAN Y RWY 19

TACAN NPA Chan 119	APCH CRS 182°	Fix/Ideg TDZE Appt Elev 22 28	AL-736 [USN] PENSACOLA NAS (FOREST SHERMAN FLD) (KNIPA)
RADAR Required: ▼		MISSED APPROACH: Climbing right turn to 1500 via NPA TACAN R-209 to FCTRY and hold.	

ATIS 124.35 266.8	PENSACOLA APP CON 120.65 270.8	SHERMAN TOWER 120.7 340.2	GND CON 121.7 336.4	CLNC DEL 134.1 268.7	ASR/ PAR
-----------------------------	--	-------------------------------------	-------------------------------	--------------------------------	-------------

CAUTION: Intermediate seg len 4.3 NM is less than minimum 6 NM.
The final opch course is 427° from rwy centreline at 3000' from hld.



EMERG SAFE ALT 100 NM 3100					
CATEGORY	A	B	C	D	E
S-19	500-1	478 (500-1)	500-138	478 (500-138)	
DIRCLING	520-1	492 (500-1)	540-1½ 512 (600-1½)	580-2 552 (600-2)	

PENSACOLA, FLORIDA 30°21'N-87°19'W PENSACOLA NAS (FOREST SHERMAN FLD) (KNIPA)
Orig 02DEC21

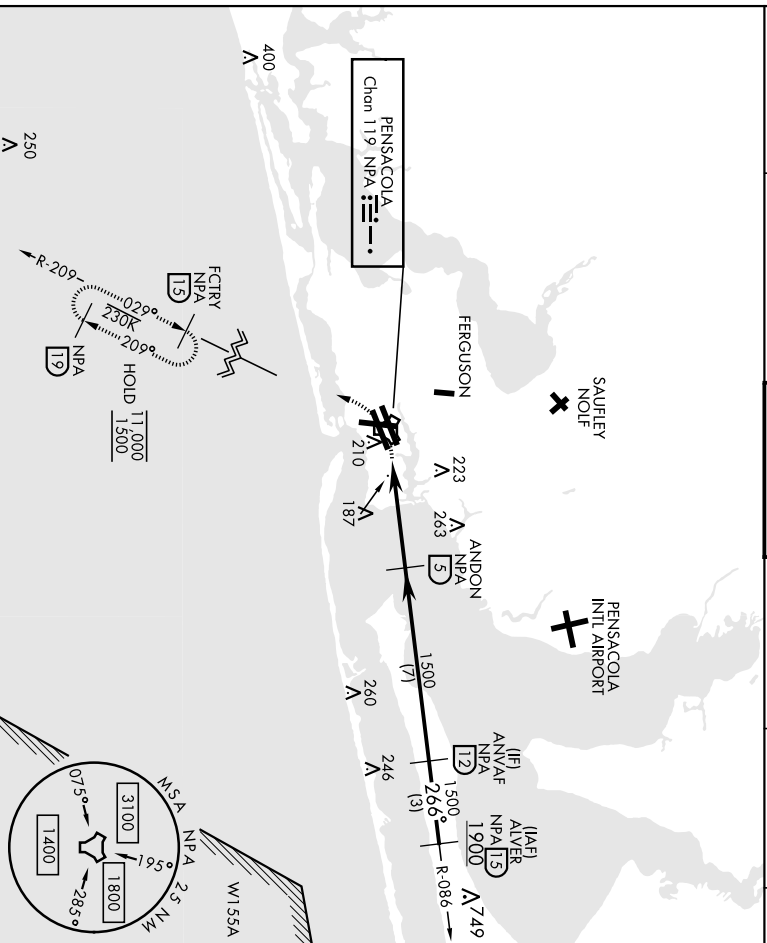
AL-736 (USN)

PENSACOLA NAS (FOREST SHERMAN FLD) (KNPA)

TACAN NPA Chon 119	APCH CRS 266°	Rwy/Ldg TDZE Appt Elev	8000 22 28
------------------------------	-------------------------	------------------------------	---------------------------------------

MISSED APPROACH: Climbing left turn to 1500
via NPA TACAN R-209 to FCTRY and hold

RADAR required: ▼	ATIS 124.35 266.8	PENSACOLA APP CON 120.65 270.8	SHERMAN TOWER 120.7 340.2	GND CON 121.7 336.4	CLNC DEL 134.1 268.7	ASR/ PAR
--------------------------	-----------------------------	--	-------------------------------------	-------------------------------	--------------------------------	-------------

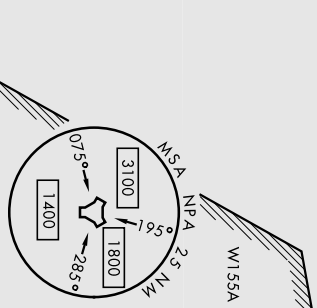
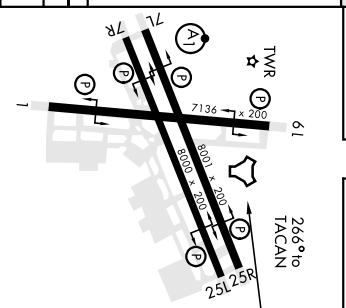


EMERG SAFE ALT 100 NM 3100

1500 FCTRY NPA R-209	15 15
-------------------------------	----------

CATEGORY	A		B		C		D		E	
	440-1	418	(500-1)	440-1½	418	(500-1½)	580-2	552	(600-2)	
S-25L	520-1	492	(500-1)	540-1½	512	(600-1½)	580-2	552	(600-2)	

◻ CIRCLING	520-1	492	(500-1)	540-1½	512	(600-1½)	580-2	552	(600-2)	
------------	-------	-----	---------	--------	-----	----------	-------	-----	---------	--



AL-736 [USN]

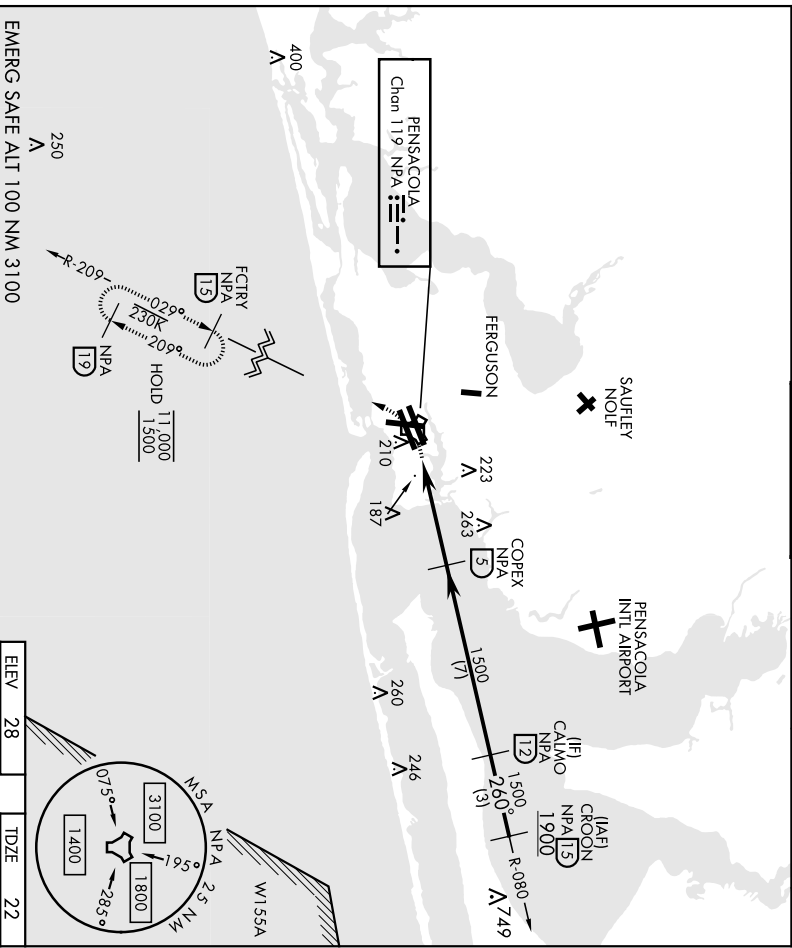
PENSACOLA NAS (FORREST SHERMAN FLD) (KNPA)

TACAN NPA Chon 119	APCH CRS 260°	Rwy/Ldg TDZE Appr Elev	8000 22 28
------------------------------	-------------------------	------------------------------	---------------------------------------

MISSED APPROACH: Climbing left turn to 1500
via NPA TACAN R-209 to FCTRY and hold

ATIS 124.35 266.8	PENSACOLA APP CON 120.65 270.8	SHERMAN TOWER 120.7 340.2	GND CON 121.7 336.4	CLNC DEL 134.1 268.7	ASR/ PAR
-----------------------------	--	-------------------------------------	-------------------------------	--------------------------------	-------------

RADAR required.



ELEV 28	TDZE 22
---------	---------

EMERG SAFE ALT 100 NM 3100					
1500 FCTRY NPA R-209 15				TACAN	
CATEGORY	A	B	C	D	E
S-25R	440-1	419 (500-1)	440-1½	419 (500-1½)	

C CIRCLING	520-1	492 (500-1)	540-1½	512 (600-1½)	580-2	552 (600-2)	HHR all Rwy's REL all Rwy's
-------------------	-------	-------------	--------	--------------	-------	-------------	--------------------------------

PENSACOLA, FLORIDA 30° 21' N-87° 19' W PENSACOLA NAS (FORREST SHERMAN FLD) (KNPA)
Orig 02DEC21 **TACAN Y RWY 25R**

TACAN NPA Chon 119	APCH CRS 064°	Fix/Ideg TDZE 23 Arpt Elev 28
Radar required:		AISF-1
* When ATIS inop, increase CAT AB vis to 1 mile, CAT CDE vis to 1/2 miles.		† MISSED APPROACH: Climbing right turn to 1500 via NPA TACAN R-145 to CUPER and hold.

ATIS 124.35 266.8	PENSACOLA APP CON 120.65 270.8
-----------------------------	--

SHERMAN TOWER 120.7 340.2

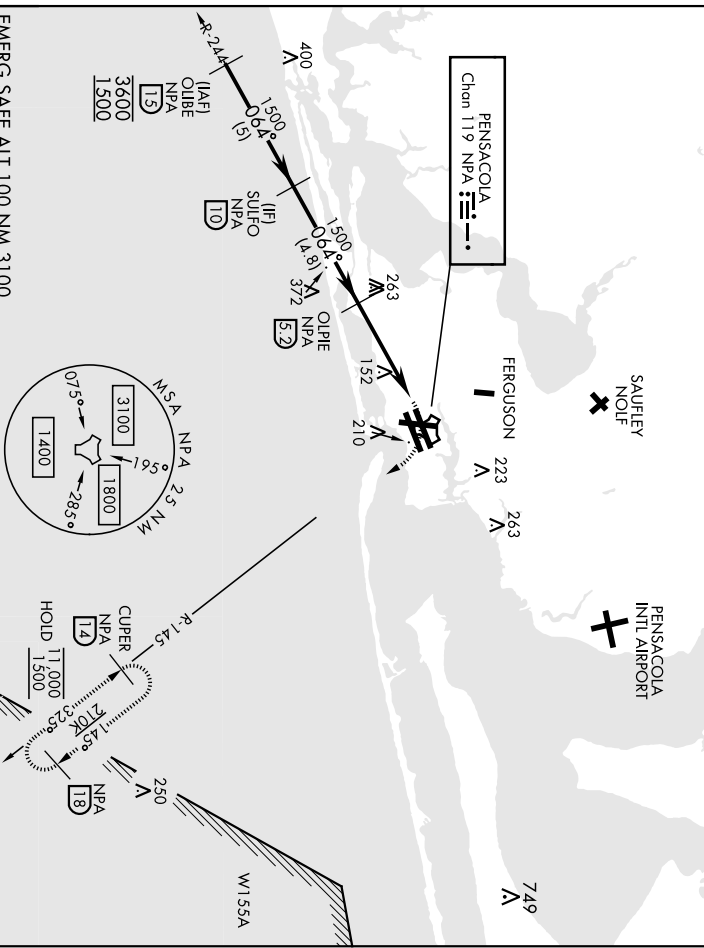
GND CON 121.7 336.4

CLNC DEL 134.1 268.7

ASR/ PAR

CAUTION: Inmed segment length 4.8 NM is less than the minimum 6 NM.

† Missed Approach requires use of RNAV or ATC RADAR monitoring.



EMERG SAFE ALT 100 NM 3100

CATEGORY	A	B	C	D	E
	5-7L *	440-1/2 417 (500-1/2)	440-1 417 (500-3/4)	580-2 552 (600-2)	
☑ CIRCLING	520-1 492 (500-1)	540-1 1/2 512 (600-1/2)	580-2 552 (600-2)		

SUIFO	OLPIE	TACAN	TWR
1500	1500	1500 NPA R-145	61
064°	3.00°	075°	064° to TACAN
064°	3.9 NM	285°	
	0.5		

TACAN NPA	APCH CRS	Req'd Idg	8001
Chon 119	059°	TDZE	23
		Appt Elev	28

AL-736 (USN)

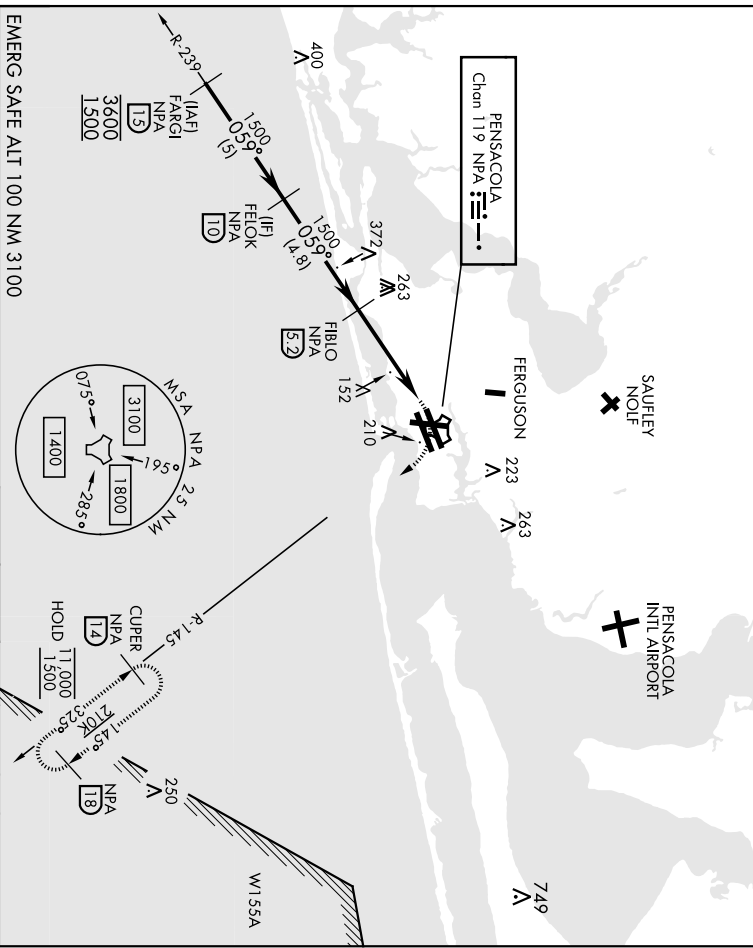
PENSACOLA NAS (FOREST SHERMAN FLD) (KNPA)

RADAR required:	ATIS	PENSACOLA APP CON	SHERMAN TOWER	GND CON	CINC DEL	ASR/ PAR
	124.35 266.8	120.65 270.8	120.7 340.2	121.7 336.4	134.1 268.7	



MISSED APPROACH: Climbing right turn to 1500 via NPA TACAN R-145 to CUPER and hold.

CAUTION: Inrmed segment length 4.8 NM is less than the minimum 6 NM.



CATEGORY	A	B	C	D	E
	S-7R	440-1 415 (500-1)	440-1½ 415 (500-1½)	580-2 552 (600-2)	
☑ CIRCLING	520-1 492 (500-1)	540-1½ (500-1½)	512 (600-1½)	580-2 552 (600-2)	

PENSACOLA, FLORIDA 30° 21' N - 87° 19' W PENSACOLA NAS (FOREST SHERMAN FLD) (KNPA) HIRL all Rwy's REL all Rwy's Orig 02DEC21

TACAN Y RWY 7R

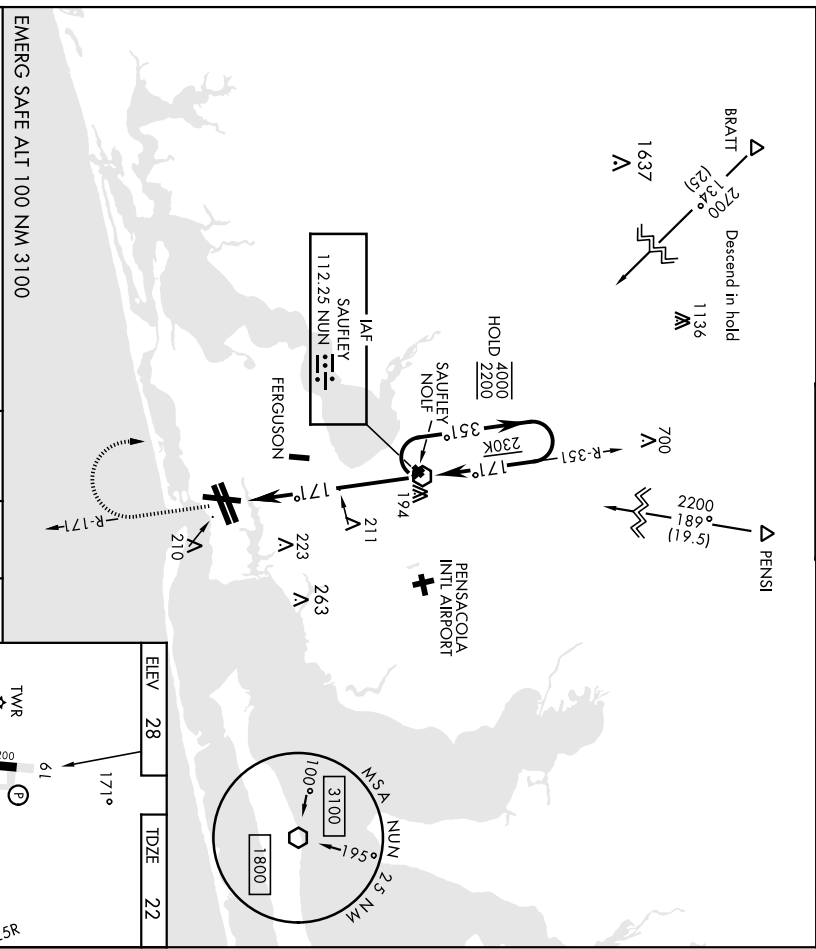
VOR NUN 112.25	APCH CRS 171°	Rwy/Idg TDZE Appt Elev	7136 22 28
--------------------------	-------------------------	------------------------------	---------------------------------------

AL-736 [USN]

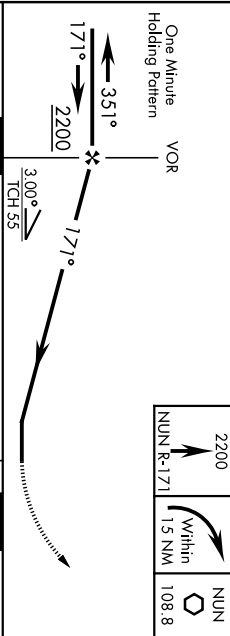
PENSACOLA NAS (FORREST SHERMAN FLD) (KNPA)

ATIS 124.35 266.8	PENSACOLA APP CON 120.65 270.8	SHERMAN TOWER 120.7 340.2	GND CON 121.7 336.4	CINC DEL 134.1 268.7	ASR/ PAR
-----------------------------	--	-------------------------------------	-------------------------------	--------------------------------	-------------

MISSED APPROACH: Climb to 2200 via NUN R-171. Then turn right direct NUN VOR and hold. Remain within 1.5 NM of NUN.



EMERG SAFE ALT 100 NM 3100



CATEGORY	A	B	C	D
S-19	500-1	478 (500-1)	500-1 3/8 (500-1 3/8)	580-2 (500-1 3/8)
CRCLING	520-1	492 (500-1)	540-1 1/2 (512 (600-1 1/2))	552 (600-2)

HRL all Rwys	61
REIL all Rwys	61
FAF to MAP 4.0 NM	61

Knots	60	90	120	150	180
Min:Sec	6:00	4:00	3:00	2:24	2:00

ELEV	28	TDZE	22
------	----	------	----

PENSACOLA, FLORIDA
Orig 02DEC21
30°21' N - 87°9' W
PENSACOLA NAS (FORREST SHERMAN FLD) (KNPA)
VOR Y RWY 19