

KINGSVILLE-THREE DEPARTURE (NQ13•NQ1)

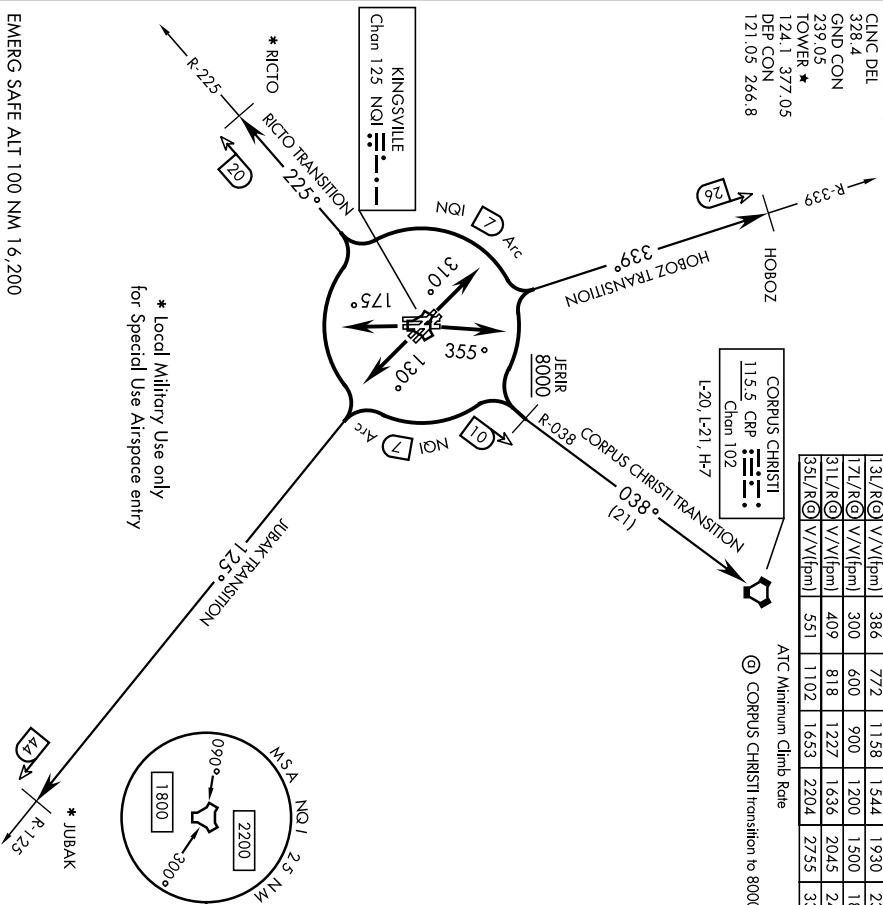
KINGSVILLE NAS (KNQ1)
KINGSVILLE, TEXAS

Rwy	Knots	60	120	180	240	300	360
13L/R (R)	V/V(fpm)	386	772	1138	1544	1930	2316
17L/R (R)	V/V(fpm)	300	600	900	1200	1500	1800
31L/R (R)	V/V(fpm)	409	818	1227	1636	2045	2454
35L/R (R)	V/V(fpm)	551	1102	1653	2204	2755	3306

ATIS* 282.25
CLINC DEL
328.4
GND CON
239.05
TOWER*
124.1 377.05
DEP CON
121.05 266.8

CORPUS CHRISTI
115.5 CRP
Chan 102

ATC Minimum Climb Rate
⊙ CORPUS CHRISTI Transition to 8000



EMERG SAFE ALT 100 NM 16,200

DEPARTURE ROUTE DESCRIPTION

- TAKE-OFF RWWY 13L/R: Climb via heading 130° to join NQ1 TACAN 7 DME arc, thence....
- TAKE-OFF RWWY 17L/R: Climb via heading 175° to join NQ1 TACAN 7 DME arc, thence....
- TAKE-OFF RWWY 31L/R: Climb via heading 310° to join NQ1 TACAN 7 DME arc, thence....
- TAKE-OFF RWWY 35L/R: Climb via heading 355° to join NQ1 TACAN 7 DME arc, thence....

CORPUS CHRISTI TRANSITION (NQ13•CRP):

- Rwys 13L/R and 17L/R: Turn left to intercept NQ1 7 DME arc and arc NE. Turn right to intercept NQ1 R-038 to cross JERIK at or above 8000. Then on NQ1 R-038 to CRP VORTAC.
- Rwys 31L/R and 35L/R: Turn right to intercept NQ1 7 DME arc and arc NE. Turn left to intercept NQ1 R-038 to cross JERIK at or above 8000. Then on NQ1 R-038 to CRP VORTAC.

(Continued on next page)

KINGSVILLE-THREE DEPARTURE (NQ13•NQ1)



DEPARTURE ROUTE DESCRIPTION
(Continued)

HOBZ TRANSITION (NQI3•HOBZ):

Rwys 13L/R and 35L/R: Turn left to intercept NQI 7 DME arc and arc NW. Turn right to intercept NQI R-339 to HOBZ.

Rwys 17L/R and 31L/R: Turn right to intercept NQI 7 DME arc and arc NW. Turn left to intercept NQI R-339 to HOBZ.

JUBAK TRANSITION (NQI3•JUBAK): *

Rwys 13L/R and 17L/R: Turn left to intercept NQI 7 DME arc and arc SE. Turn right to intercept NQI R-125 to JUBAK.

Rwys 31L/R and 35L/R: Turn right to intercept NQI 7 DME arc and arc SE. Turn left to intercept NQI R-125 to JUBAK.

RICTO TRANSITION (NQI3•RICTO): *

Rwy 13L/R and 17L/R: Turn right to intercept NQI 7 DME arc and arc SW. Turn left to intercept NQI R-225 to RICTO.

Rwy 31L/R and 35L/R: Turn left to intercept NQI 7 DME arc and arc SW. Turn right to intercept NQI R-225 to RICTO.

* RICTO and JUBAK transitions are for local use for Special Use Airspace entry only.

LOST COMMUNICATIONS: If no transmissions are received one minute after departure, climb to assigned altitude, proceed direct assigned NAVAID or intercept NQI TACAN 7 DME arc, arc to respective departure radial then via departure radial to assigned departure fix. Then via assigned transition or route. Once established on departure radial climb to filed altitude.