

HI-TACAN Z RWY 23L/R

TACAN NTU Chon 113

AL-934 (USN)
OCEANA NAS (APOLO SOUCEK FID)

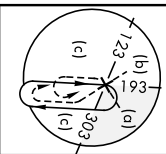
(KNTU)

Rwy/Idg 23L 12,001' 23R 8000'
TDZE 23L 21 23R 20
Aptl Elev 22

ATIS 317.6
APP/DEP CON 123.9 266.8
TOWER 127.075 360.2
GND CON 119.6 336.4
CLNC DEL 254.4
ASR/PAR

ALSIF-1
A1

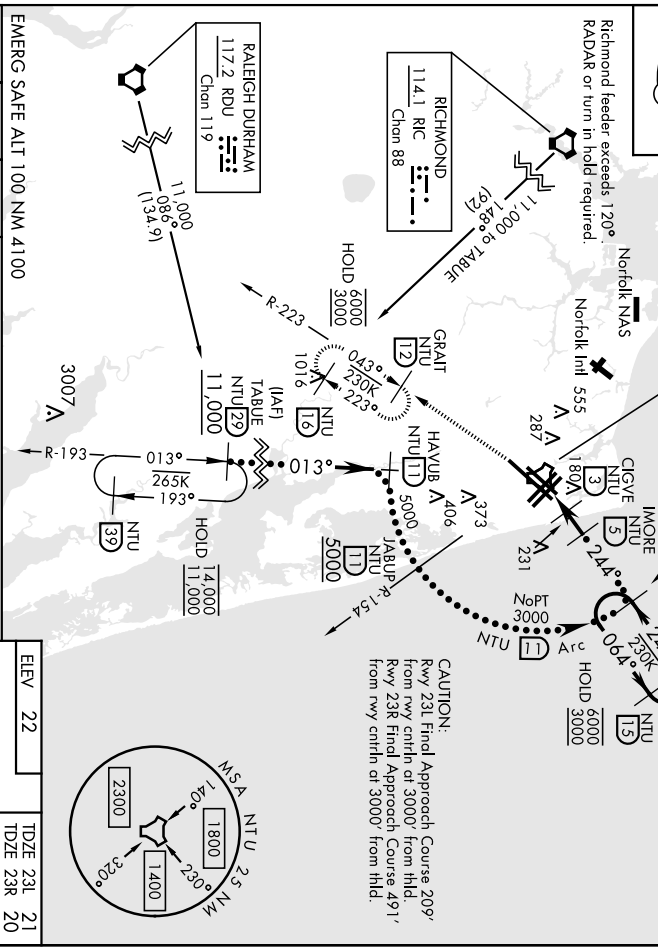
* When ALS Inop, increase CAT CDE vis to 1 1/2 miles
MISSED APPROACH: Climb to 3000 via R-064 to NTU TACAN, and via R-223 to GRAT or HOLD.



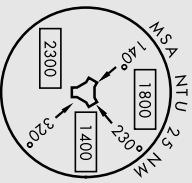
OCEANA
Chon 113 NTU

CAPE CHARLES
112.2 CCV
Chon 59

Richmond feeder exceeds 120°
RADAR or turn in hold required.



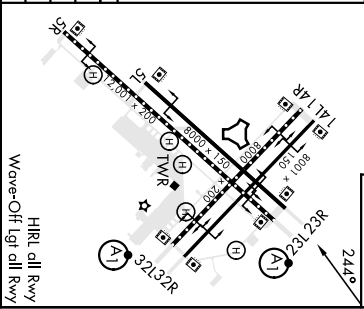
CAUTION:
Rwy 23L Final Approach Course 209° from rwy crnlh of 3000' from thld.
Rwy 23R Final Approach Course 491° from rwy crnlh of 3000' from thld.



EMERG SAFE ALT 100 NM 4100
ELEV 22
TDZE 23L 21
TDZE 23R 20

3000
NTU R-064
NTU R-223

CATEGORY	C	D	E
S-231 *	440-3/4	419 (500-3/4)	
S-238	440-1/8	420 (500-1/8)	
CIRCLING	600-1/2 578 (600-1/2)	600-2 578 (600-2)	900-3 878 (900-3)



VIRGINIA BEACH, VIRGINIA
36° 49' N - 76° 02' W
OCEANA NAS (APOLO SOUCEK FID) (KNTU)

Orig ZTJAN22

HI-TACAN Z RWY 23L/R

VIRGINIA BEACH, VIRGINIA

HI-TACAN Z RWY 32L/R

TACAN NTU Chan 113	APCH CRS 309°	Rwy Idg TDZE	32L 22	32R 20
-----------------------	------------------	-----------------	-----------	-----------

AL-934 USNI

OCEANA NAS (APOLLO SOUCEK FLD) (KNTU)

▲ * When AIS Inop, increase CAT CDE vis to 1 1/2 miles.



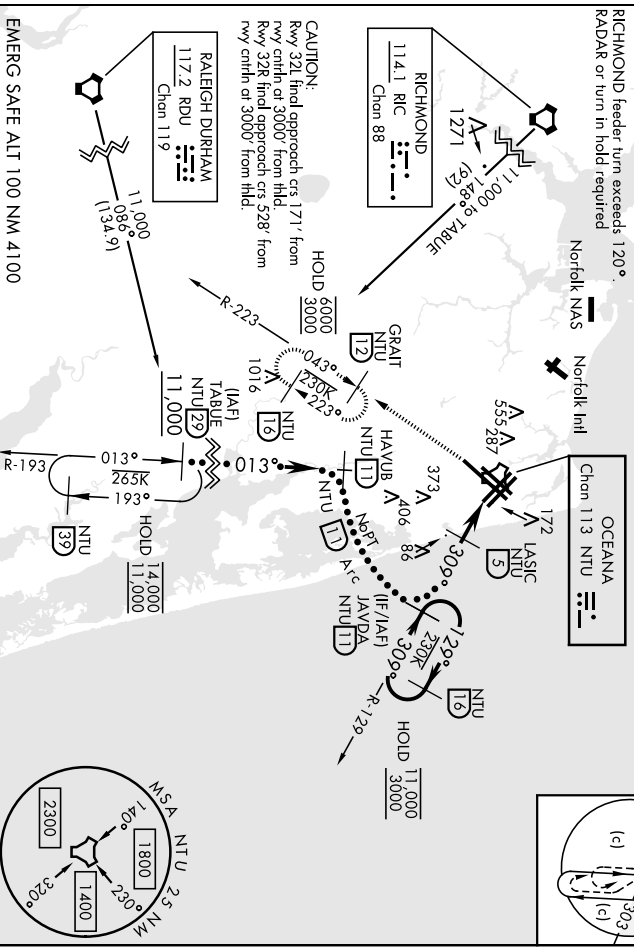
MISSED APPROACH: Climbing left turn to 3000, Intercept NTU TACAN R-223 to GRAT and hold.

ATIS 317.6	APP/DEP CON 123.9 266.8	TOWER 127.075 360.2	GND CON 119.6 336.4	CLNC DEL 254.4	ASR/ PAR
---------------	----------------------------	------------------------	------------------------	-------------------	-------------

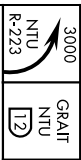
Knots	60	120	180	240	300	360
V/ft(fpm)	220	440	660	880	1100	1320

Min climb of 220 ft/NM to 3000 - Controlling Obstacle Unk

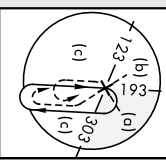
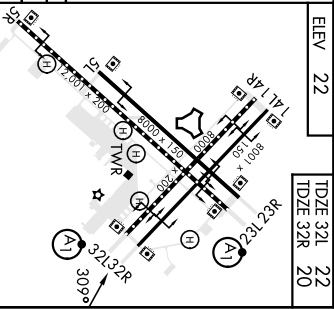
RICHMOND feeder turn exceeds 120°.
R-223 or turn in hold required



EMERG SAFE ALT 100 NM 4100



TACAN	LASIC	JAYDA	ELEV 22	TDZE 32L 22
FRUT 1.3	1500	111,000	TDZE 32R 20	
3.5 NM	309°	129°		
CATEGORY	C	D	E	
S-32L *	440-3/4	418 (500-3/4)		
S-32R	440-1/8	420 (500-1/8)		



VIRGINIA BEACH, VIRGINIA
 Orig 27JAN22
 OCEANA NAS (APOLLO SOUCEK FLD) (KNTU)
 HI-TACAN Z RWY 32L/R
 HRL all Rwy Wave-Off lgt all Rwy

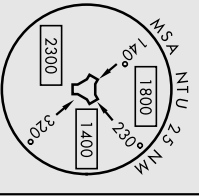
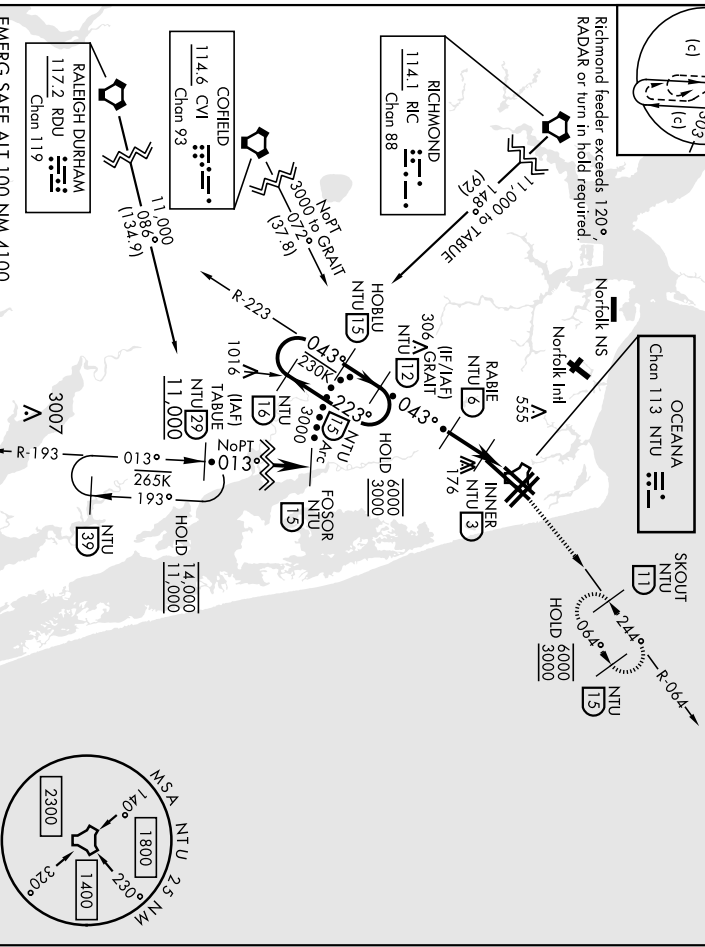
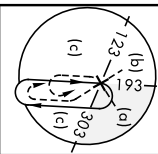
TACAN NTU Chan 113	APCH CRS 043°	Rev/Idg TDZE 20 App Elev. 22	8000
-----------------------	------------------	---------------------------------------	------

AI-934 (USN)

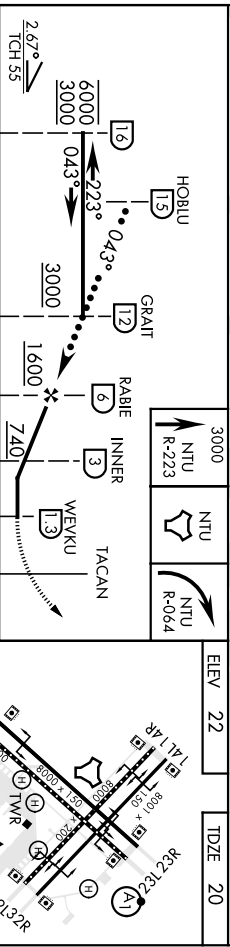
OCEANA NAS (APOLLO SOUCEK FID) (KNTU)

MISSED APPROACH: Climb to 3000 via R-223 to NTU TACAN and via R-064 to SKOUT and hold.

ATIS 317.6	APP/DEP CON 123.9 266.8	TOWER 127.075 360.2	GND CON 119.6 336.4	CINC DEL 254.4	ASR/ PAR
CAUTION: Final approach crs 17° from rwy enfln at 3000' from hld.		Knots 60 120 180 240 300 360			
		V/W(fpm) 210 420 630 840 1050 1260			
Min climb of 210 ft/NM to 3000 - Controlling Obstacle Unk					



EMERG SAFE ALT 100 NM 4100



CATEGORY	C	D	E
S-5L	420-1½	400 (400-1½)	900-3
CIRCLING	600-1½ 578 (600-1½)	600-2 578 (600-2)	900-3 878 (900-3)

VIRGINIA BEACH, VIRGINIA 36° 49' N - 76° 02' W OCEANA NAS (APOLLO SOUCEK FID) (KNTU)

Orig ZTJAN22

HI-TACAN Z RWY 5L



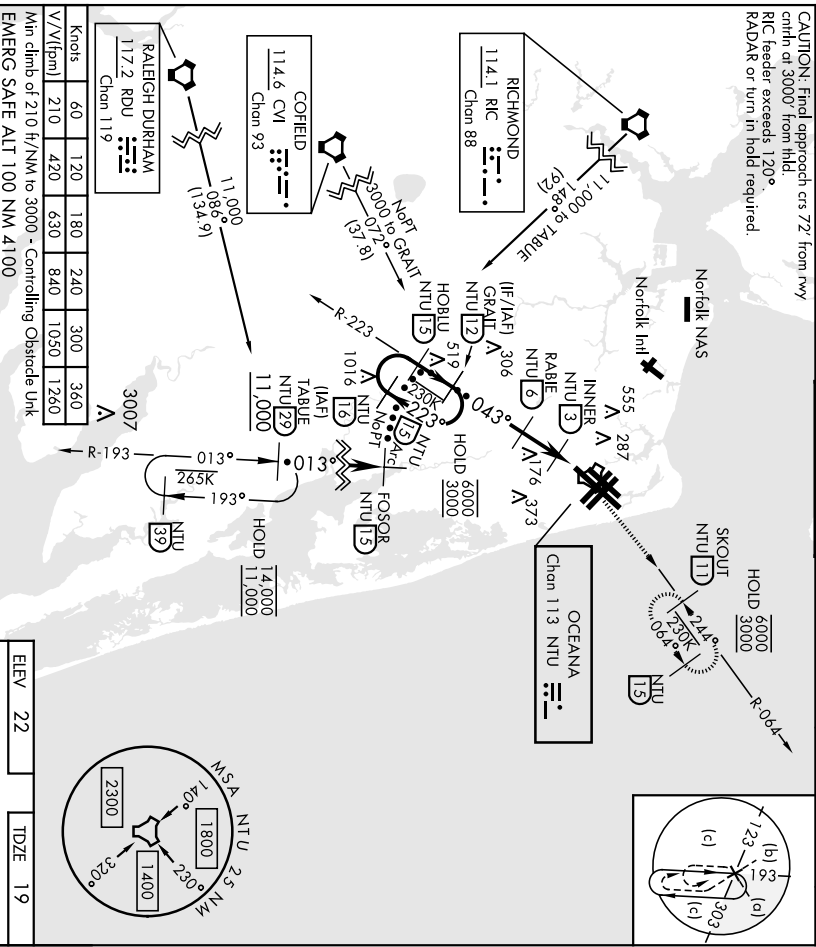
TACAN NTU Chon 113	APCH CRS 043°	Rwy Idg 12,001	TDZE 19	App Elev 22	Al-924 [USN]	OCEANA NAS (APOLLO SOUCEK FID) (KNTU)
ATIS 317.6	APP/DEP CON 123.9 266.8	TOWER 127.075 360.2	GND CON 119.6 336.4	CLNC DEL 254.4	ASR/ PAR	

* When ALS inop, increase CAT DDE vis to 1/2 miles.



MISSED APPROACH: Climb to 3000 via R-223 to NTU TACAN, and via R-064 to SKOUT and hold.

CAUTION: Final approach crs 72° from rwy
 crnht at 3000 from hld.
 RIC leader exceeds 120°
 RADAR or turn in hold required.



VIRGINIA BEACH, VIRGINIA

RNAV (GPS) RWY 23L

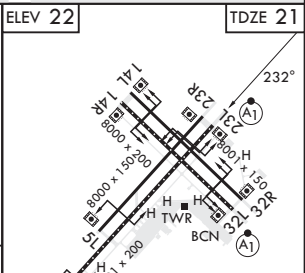
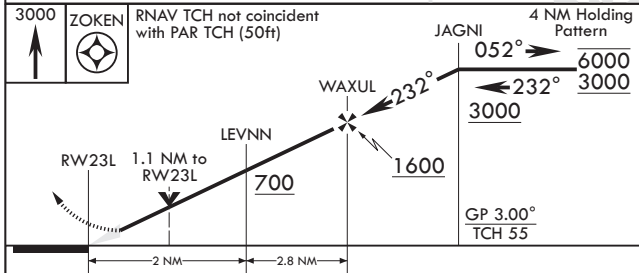
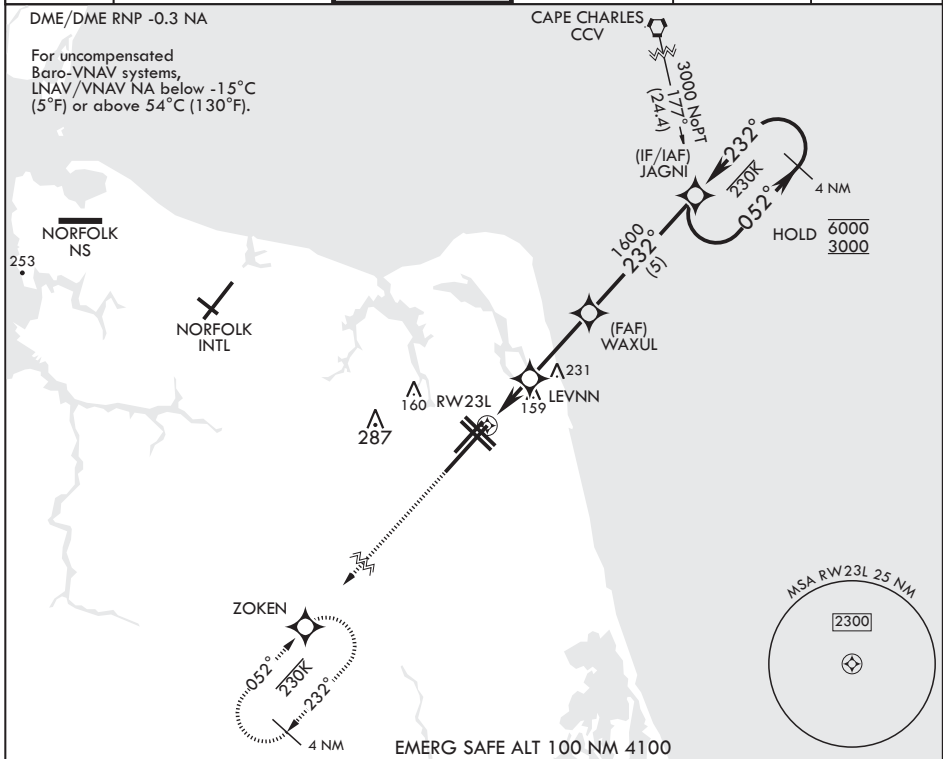
WAAS CH 67300 W23A	APCH CRS 232°	Rwy ldg TDZE 12,001 21 22
---------------------------------	-------------------------	---

AL-934 (USN) OCEANA NAS (APOLLO SOUCEK FLD) (KNTU)

V * When ALS inop, increase vis to 3/4 mile.
 ** When ALS inop, increase vis to 7/8 mile.
 *** When ALS inop, increase CAT AB vis to 1 mile; CAT CD vis to 1 1/8 miles.

ALSF-1 MISSED APPROACH: Climb to 3000 direct ZOKEN and hold.

ATIS 317.6	APP CON/DEP CON 123.9 266.8	TOWER 127.075 360.2	GND CON 119.6 336.4	CLNC DEL 254.4	ASR/PAR
----------------------	---------------------------------------	-------------------------------	-------------------------------	--------------------------	---------



CATEGORY	A	B	C	D
LPV DA*	221-1/2	200	(200-1/2)	
LNAV/VNAV DA**	324-1/2	303	(400-1/2)	
LNAV MDA***	420-1/2	399 (400-1/2)	420-5/8	399 (400-5/8)
CI RINGING	500-1	478 (500-1)	600-1 1/2	600-2
			578 (600-1 1/2)	578 (600-2)

HIRL all Rwys
 Wave-Off Lights all Rwys

VIRGINIA BEACH, VIRGINIA
 Amdt 4 27JAN22

36°49'N - 76°02'W OCEANA NAS (APOLLO SOUCEK FLD) (KNTU)

RNAV (GPS) RWY 23L

NE-3, 22 FEB 2024 to 21 MAR 2024

NE-3, 22 FEB 2024 to 21 MAR 2024

RNAV (GPS) RWY 32L/R

APCH CRS 325°	Rwy Idg	32L	32R
	TDZE	8000	8001
	Arprt Elev	22	20

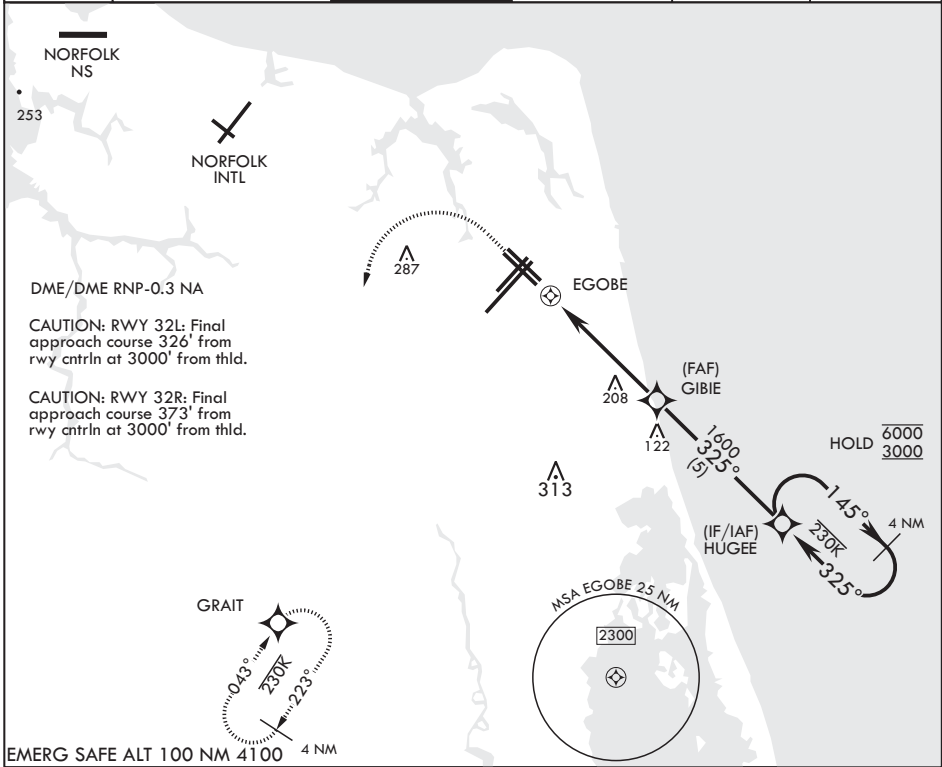
AL-934 (USN) OCEANA NAS (APOLLO SOUCEK FLD) (KNTU)

▼ * When ALS inop increase CAT AB vis to 1 mile, CAT CD vis to 1 1/8 miles.

Rwy 32L
ALSF-1

MISSED APPROACH: Climbing 1100 then climbing left turn to 3000 direct GRAIT and hold.

ATIS 317.6	APP CON/DEP CON 123.9 266.8	TOWER 127.075 360.2	GND CON 119.6 336.4	CLNC DEL 254.4	ASR/PAR
---------------	--------------------------------	------------------------	------------------------	-------------------	---------



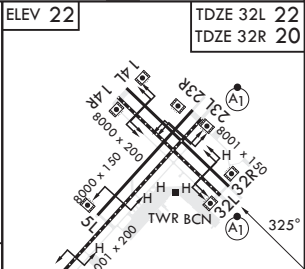
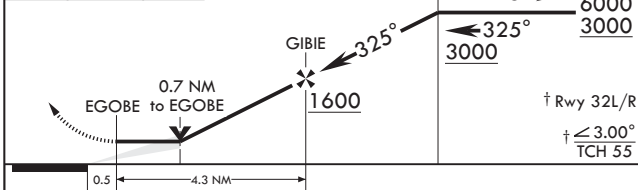
1100	3000	GRAIT
crs 325°		

RNAV TCH not coincident with PAR TCH (50ft).

4 NM Holding Pattern

ELEV 22

TDZE 32L 22
TDZE 32R 20



CATEGORY	A	B	C	D
LNVA MDA	460-1	440 (500-1)	460-1¼	440 (500-1¼)
LNVA MDA*	460-½	438 (500-½)	460-¾	438 (500-¾)
◻ CIRCLING	500-1	478 (500-1)	600-1½ 578 (600-1½)	600-2 578 (600-2)

HIRL all Rwys
Wave-Off Lights all Rwys

RNAV (GPS) RWY 32L/R

NE-3, 22 FEB 2024 to 21 MAR 2024

NE-3, 22 FEB 2024 to 21 MAR 2024

VIRGINIA BEACH, VIRGINIA

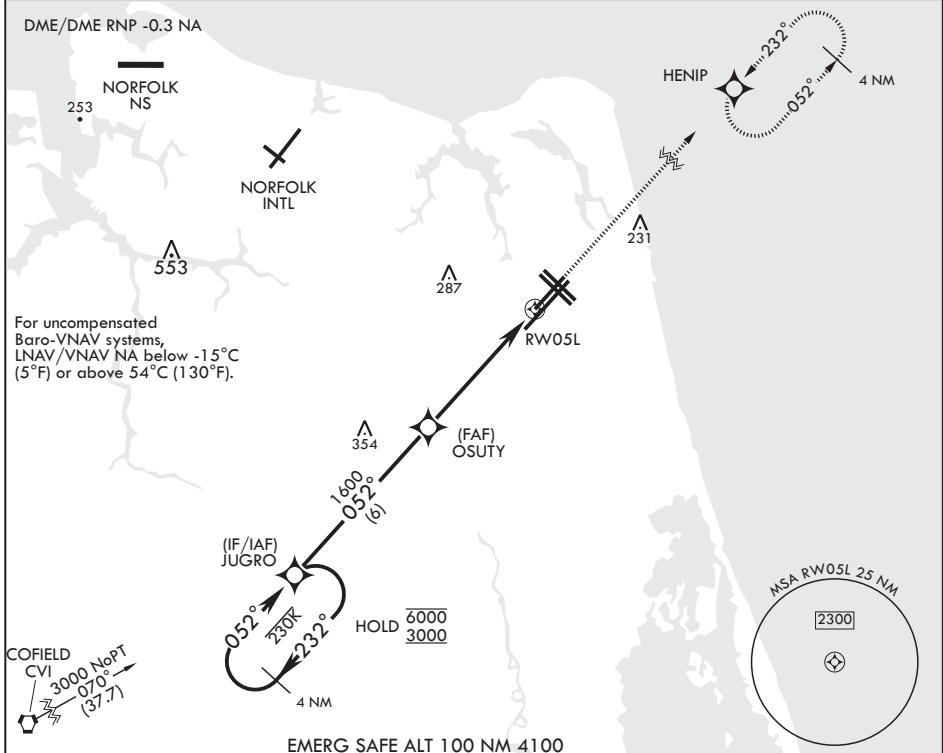
RNAV (GPS) RWY 5L

WAAS CH 63997 W05A	APCH CRS 052°	Rwy ldg TDZE 20 Arprt Elev 22	8000
---------------------------------	-------------------------	---	-------------

AL-934 (USN) OCEANA NAS (APOLLO SOUCEK FLD) (KNTU)

▽ MISSED APPROACH: Climb to 3000 direct HENIP and hold. Continue climb in hold to 3000.

ATIS 317.6	APP CON/DEP CON 123.9 266.8	TOWER 127.075 360.2	GND CON 119.6 336.4	CLNC DEL 254.4	ASR/PAR
----------------------	---------------------------------------	-------------------------------	-------------------------------	--------------------------	---------



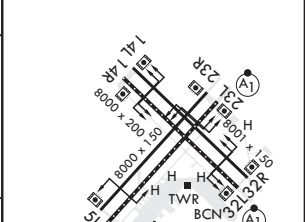
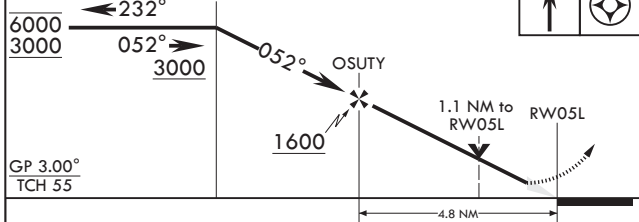
For uncompensated Baro-VNAV systems, LNAV/VNAV NA below -15°C (5°F) or above 54°C (130°F).

NE-3, 22 FEB 2024 to 21 MAR 2024

NE-3, 22 FEB 2024 to 21 MAR 2024

EMERG SAFE ALT 100 NM 4100

4 NM Holding Pattern	JUGRO	RNAV TCH not coincident with PAR TCH (50ft).	3000	HENIP	ELEV 22	TDZE 20
----------------------	-------	--	------	-------	---------	---------



CATEGORY	A	B	C	D
LPV DA	220- ³ / ₈		200	(200- ³ / ₈)
LNAV/VNAV DA	305- ⁷ / ₈ 285 (300- ⁷ / ₈)	316- ⁷ / ₈ 296 (300- ⁷ / ₈)	324- ⁷ / ₈ 304 (400- ⁷ / ₈)	335- ⁷ / ₈ 315 (400- ⁷ / ₈)
LNAV MDA	440-1	420 (500-1)	440-1 ¹ / ₂	420 (500-1 ¹ / ₂)
C CIRCLING	500-1	478 (500-1)	600-1 ¹ / ₂ 578 (600-1 ¹ / ₂)	600-2 578 (600-2)

HIRL all Rws
Wave-Off Lights all Rws

VIRGINIA BEACH, VIRGINIA

36°49'N - 76°02'W OCEANA NAS (APOLLO SOUCEK FLD) (KNTU)

Amdt 4 27JAN22

RNAV (GPS) RWY 5L

VIRGINIA BEACH, VIRGINIA

RNAV (GPS) RWY 5R

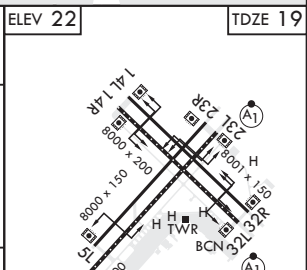
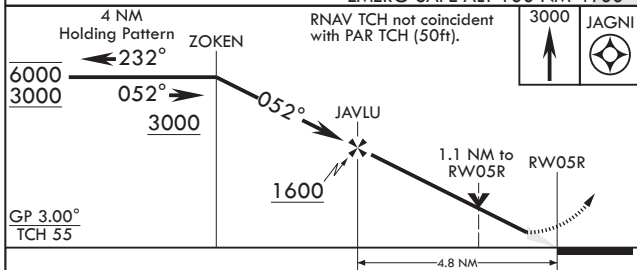
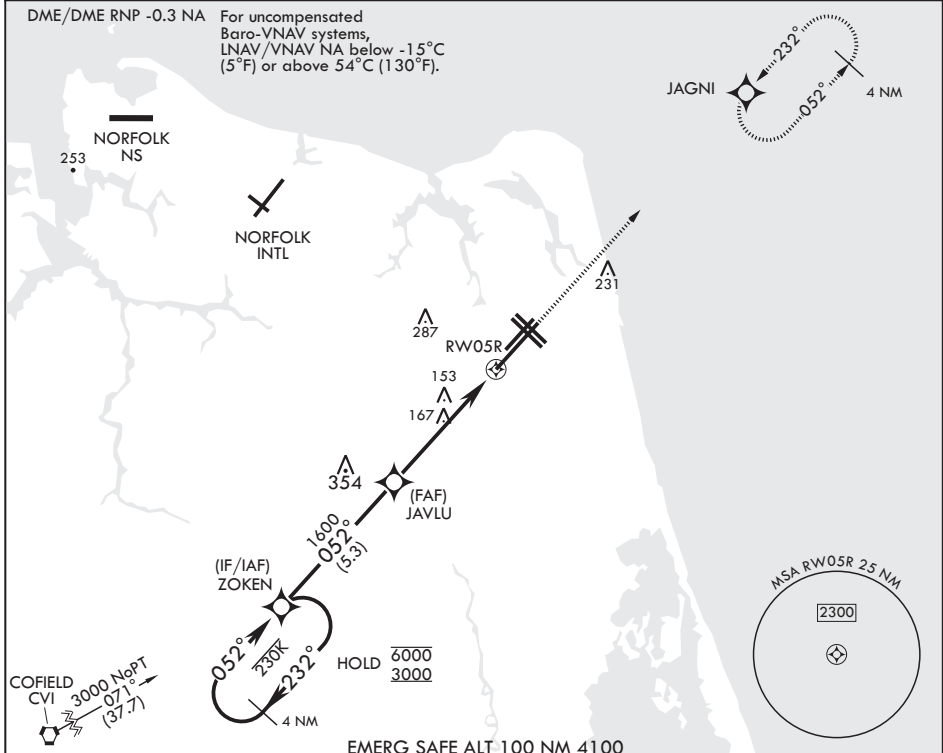
WAAS CH 69870 W05B	APCH CRS 052°	Rwy ldg TDZE Arpt Elev	12,001 19 22
---------------------------------	-------------------------	------------------------------	---

AL-934 (USN) OCEANA NAS (APOLLO SOUCEK FLD) (KNTU)

V * When ALS inop increase vis to 3/4 mile.
 ** When ALS inop increase vis to 7/8 mile.
 *** When ALS inop, increase CAT AB vis to 1 mile; CAT CD vis to 1 1/8 miles.

ALSF-1 MISSED APPROACH: Climb to 3000 direct JAGNI and hold. Continue climb in hold to 3000.

ATIS 317.6	APP CON/DEP CON 123.9 266.8	TOWER 127.075 360.2	GND CON 119.6 336.4	CLNC DEL 254.4	ASR/PAR
----------------------	---------------------------------------	-------------------------------	-------------------------------	--------------------------	---------



CATEGORY	A	B	C	D
LPV DA*	219-1/2	200	(200-1/2)	
LNAV/VNAV DA**	333-1/2	314	(400-1/2)	
LNAV MDA***	420-1/2 401 (400-1/2)		420-3/4 401 (400-3/4)	
C CIRCLING	500-1 478 (500-1)		600-1 578 (600-1 1/2)	600-2 578 (600-2)

ELEV 22

TDZE 19

JAGNI

3000

HIRL all Rwys

Wave-Off Lights all Rwys

VIRGINIA BEACH, VIRGINIA

36°49'N - 76°02'W OCEANA NAS (APOLLO SOUCEK FLD) (KNTU)

Amdt 4 27 JAN 22

RNAV (GPS) RWY 5R

NE-3, 22 FEB 2024 to 21 MAR 2024

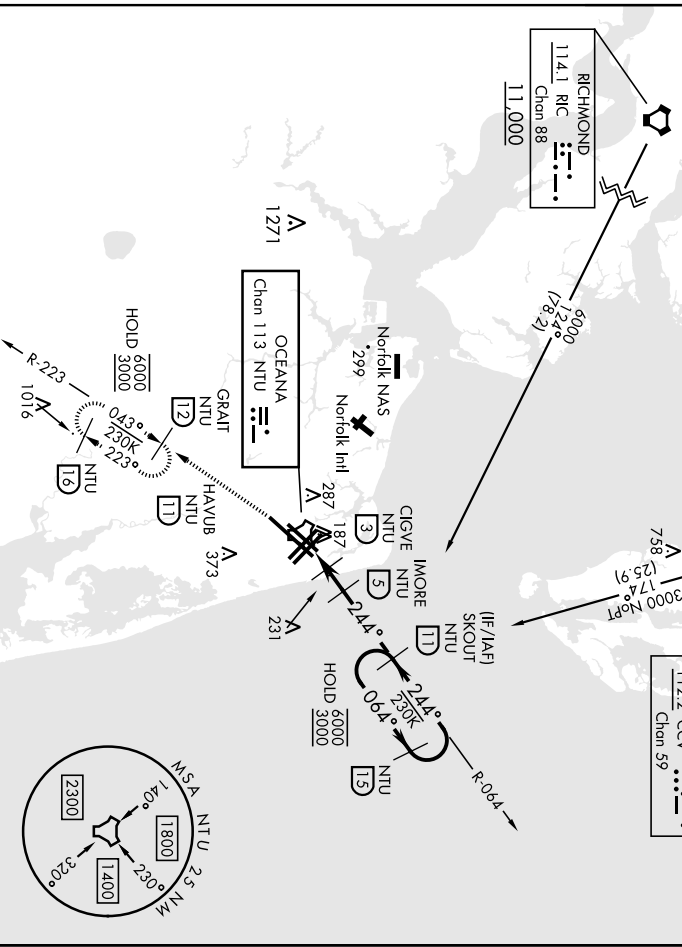
NE-3, 22 FEB 2024 to 21 MAR 2024

TACAN Y RWY 23L/R

TACAN NTU Chon 113	APCH CRS 244°	Rwy Ldg 23L TDZE 23L 21	23R 20	AL-934 USN1 OCEANA NAS (APOLO SOUCEK FLD) (KNTU)
* When ALS inop, increase CAT AB vis to 1 mile. CAT CD vis to 1½ miles.		ALSF-1 A1		MISSED APPROACH: Climb to 3000 via R-064 to NTU TACAN and via R-223 to GRAIT and hold.

ATIS 317.6	APP/DEP CON 123.9 266.8	TOWER 127.075 360.2	GND CON 119.6 336.4	CLNC DEL 254.4	ASR/ PAR
---------------	----------------------------	------------------------	------------------------	-------------------	-------------

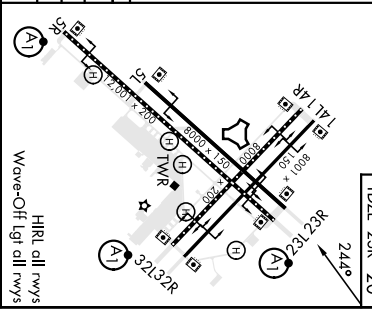
CAUTION: Rwy 23L final approach crs 209° from rwy crntr at 3000' from thld.
Rwy 23R final approach crs 491° from rwy crntr at 3000' from thld.



EMERG SAFE ALT 100 NM 41100

ELEV 22	TDZE 23L 21
	TDZE 23R 20

CATEGORY	A	B	C	D
S-23L *	440-½ 419 (500-½)	440-¾ 419 (500-¾)		
S-23R	440-1 420 (500-1)	440-1½ 420 (500-1½)		
CIRCLING	500-1 478 (500-1)	600-1½ 578 (600-1½)	600-2 578 (600-2)	



TACAN Y RWY 23L/R

TACAN Y RWY 5L

TACAN NTU Chan 113	APCH CRS 043°	Rev/Idg TDZE 20 Appr Elev 22	8000
-----------------------	------------------	--	------

AL-934 (USN)

OCEANA NAS (APOLLO SOUCEK FLD)

(KNTU)

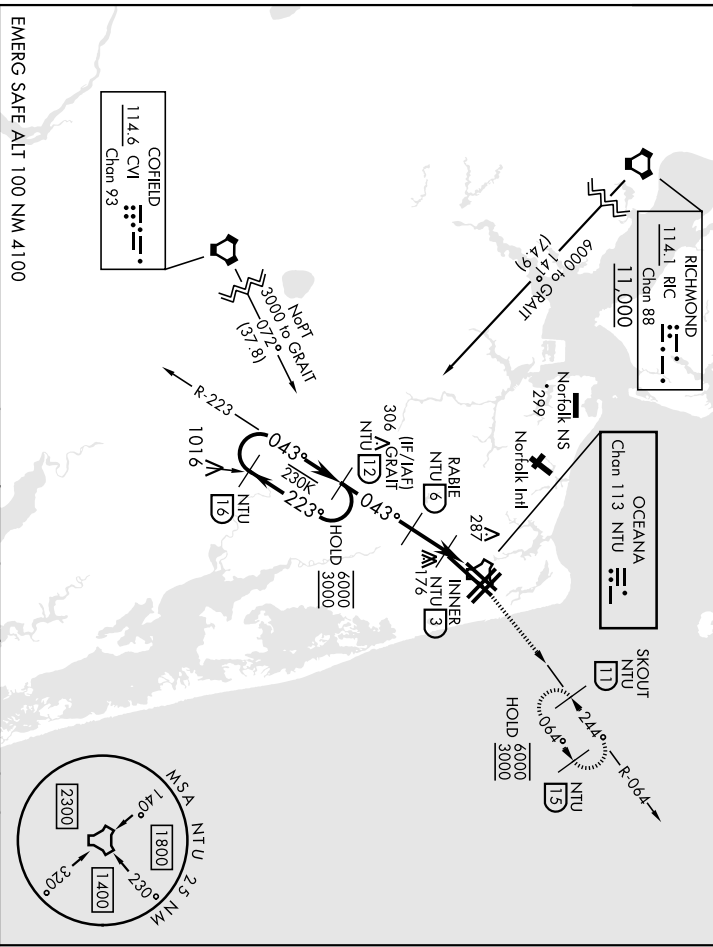
MISSED APPROACH: Climb to 3000 via R-223 to NTU TACAN and via R-064 to SKOUT and hold.

ATIS 317.6	APP/DEP CON 123.9 266.8	TOWER 127.075 360.2	GND CON 119.6 336.4	CINC DEL 254.4	ASR/ PAR
---------------	----------------------------	------------------------	------------------------	-------------------	-------------

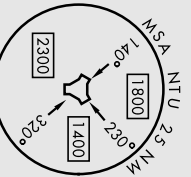
CAUTION: Final approach crs 17° from rwy crnth at 3000' from hld.

V/V(ftpm)	60	120	180	240	300	360
Knots	60	120	180	240	300	360
	210	420	630	840	1050	1260

Min climb of 210 ft/NM to 3000 - Controlling Obstacle Unk



EMERG SAFE ALT 100 NM 4100



CATEGORY	A	B	C	D	ELEV 22	TDZE 20
	S-5L	420-1	400 (400-1)	420-1½		
CIRCLING	500-1	478 (500-1)	600-1½	600-2	HRTL all rmys Wave-Off lgt all rmys	
		578 (500-1½)	578 (600-1½)	578 (600-2)		

VIRGINIA BEACH, VIRGINIA

36° 49' N - 76° 02' W

OCEANA NAS (APOLLO SOUCEK FLD) (KNTU)

Orig Z71ANZZ

TACAN Y RWY 5L

TACAN NTU Chan 113	APCH CRS 043°	Rev/Idg TDZE App Elev 19 22	12,001
------------------------------	-------------------------	---	---------------

AI-924 [USN]	ALSIF-1
--------------	-------------

OCEANA NAS (APOLLO SOURCEK FID) (KNTU)	MISSED APPROACH: Climb to 3000 via R-223 to NTU TACAN and via R-064 to SKOUR and hold.
--	--

ATIS 317.6	APP/DEP CON 123.9 266.8
----------------------	-----------------------------------

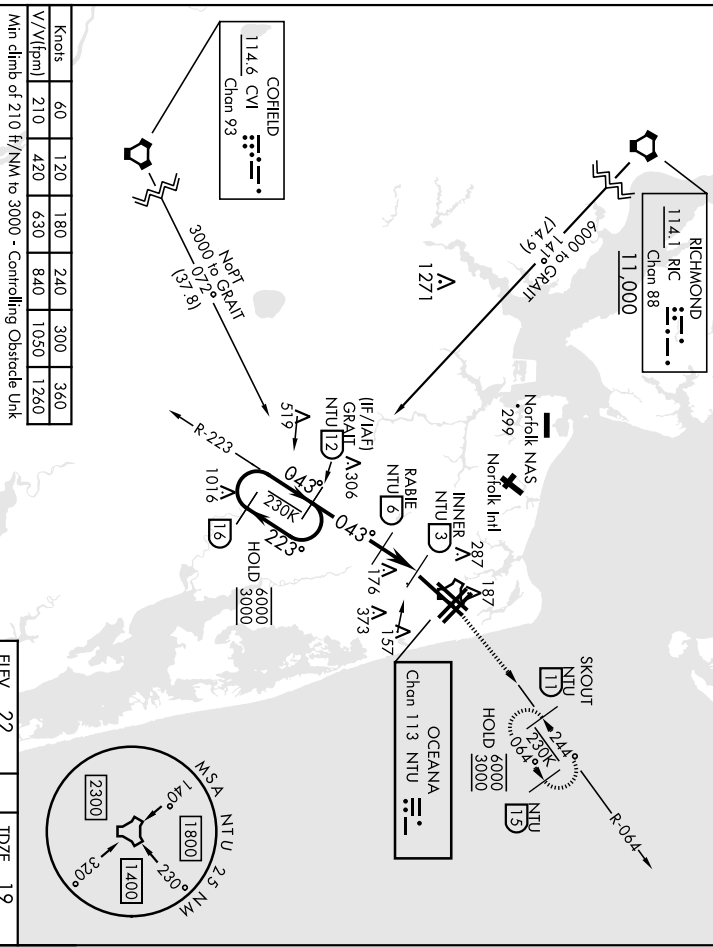
TOWER 127.075 360.2

GND CON 119.6 336.4

CLNC DEL 254.4

ASR/ PAR

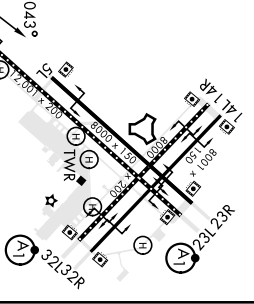
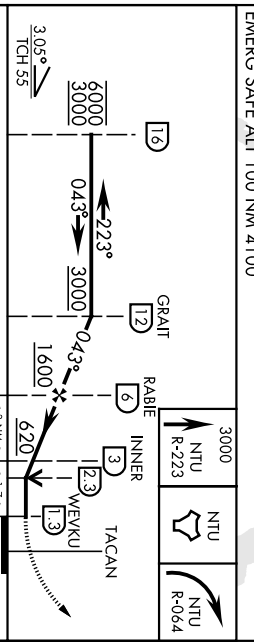
CAUTION: Final approach course 72° from rwy enrh at 3000' from hhd.



Knots	60	120	180	240	300	360
V/V(ft/min)	210	420	630	840	1050	1260

Min climb of 210 ft/NM to 3000 - Controlling Obstacle Unk

ELEV	22
TDZE	19



CATEGORY	A	B	C	D
S-5R *	420-1/2	401 (400-1/2)	420-3/4	401 (400-3/4)
CIRCLING	500-1	478 (500-1)	600-1 1/2	600-2 (600-1 1/2)

VIRGINIA BEACH, VIRGINIA
 Orig Z71ANZ2
 OCEANA NAS (APOLLO SOURCEK FID) (KNTU)
TACAN Y RWY 5R