

16259

# HOTEL VISUAL RWY 29

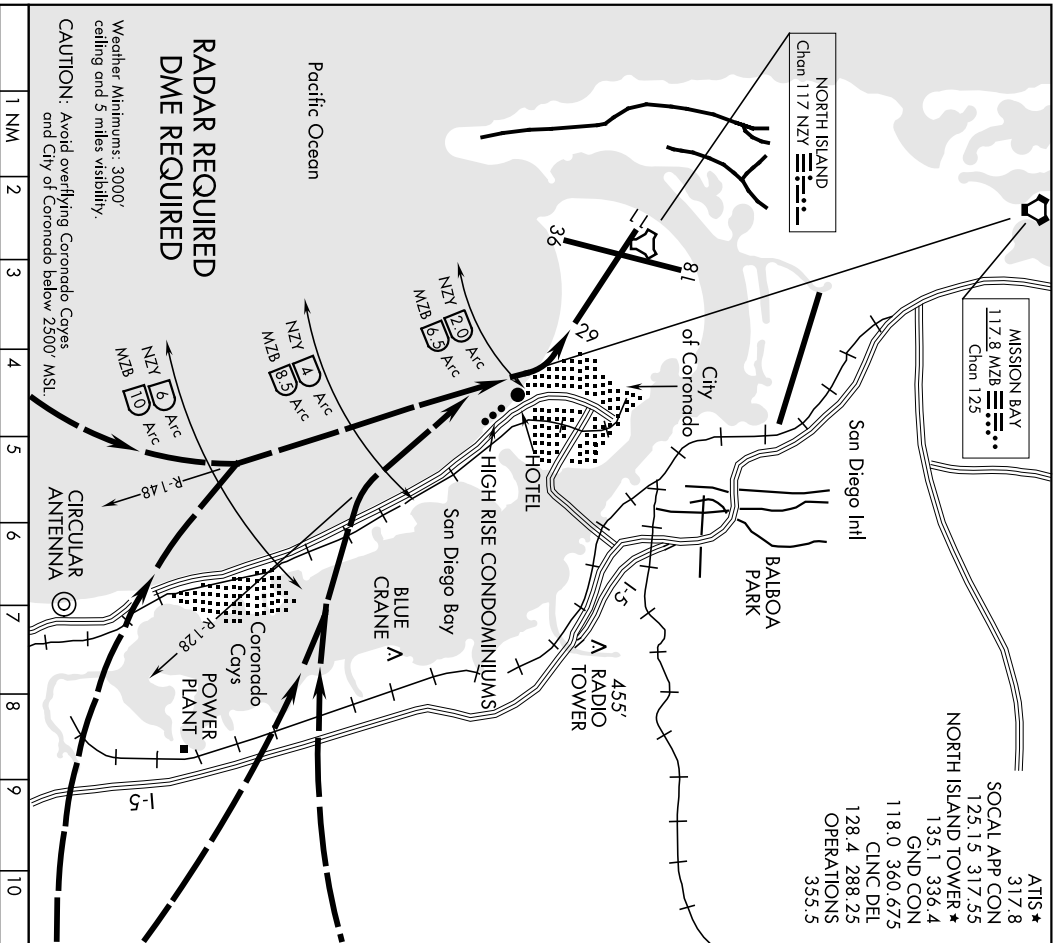
AL-374 (USN)

NORTH ISLAND NAS (HAISEY FIELD) (KNZY)

SAN DIEGO, CALIFORNIA

MISSION BAY  
 117.8 MZB  
 Chan 125

- ATIS ★ 317.8
- SOCAL APP CON 125.15 317.55
- NORTH ISLAND TOWER ★ 135.1 336.4
- GND CON 118.0 360.675
- CINC. DEL 128.4 288.25
- OPERATIONS 355.5



## RADAR REQUIRED DME REQUIRED

Weather Minimums: 3000'  
ceiling and 5 miles visibility.

CAUTION: Avoid overflying Coronado Coves  
and City of Coronado below 2500' MSL

# HOTEL VISUAL RWY 29

Aircraft avoid overflying Coronado Coves and City of Coronado below 2500' MSL.  
Proceed visually via the NZY R-128 or MZB R-148 until reaching NZY 2 DME /  
MZB 6.5 DME, then maneuver to runway centerline for straight-in Runway 29.

# HOTEL VISUAL RWY 29

32°42'N-117°13'W

SAN DIEGO, CALIFORNIA  
NORTH ISLAND NAS (HAISEY FIELD) (KNZY)

15SEP16

# HI-TACAN Z RWY 29

AL-374 (USN)

NORTH ISLAND NAS (HAISEY FIELD) (KNZY)

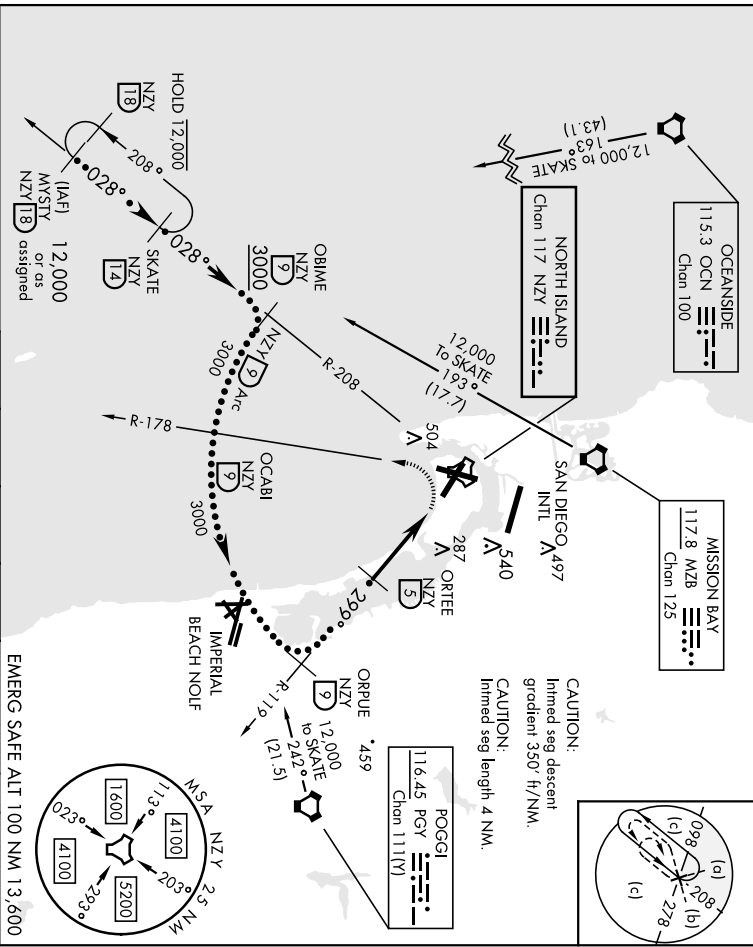
TACAN NZY Chan 117	APCH CRS 299°	Rwy Idg 7500	TDZE 26
		Appt Elev 26	

▲ \*When ALS inop, increase vis to 1 1/2 miles.



MISSED APPROACH: Climbing left turn to 2000 via NZY TACAN R-178 to OCABI Arc 5 on the NZY 9 DME arc to OBIME, then via NZY R-208 to SKATE and hold.

ATIS * 317.8	SOCAL APP CON 125.15 317.55	TOWER * 135.1 336.4	GND CON 118.0 360.675	CLNC DEL 128.4 288.25	PAR/ASR
--------------	-----------------------------	---------------------	-----------------------	-----------------------	---------



CAUTION: Limited seg descent gradient 350' / 4 NM.  
CAUTION: Limited seg length 4 NM.

EMERG SAFE ALT 100 NM 13,600

CATEGORY	C	D	E
5-29 *	540-1	514 (600-1)	
CIRCLING	NOT AUTHORIZED		

SAN DIEGO, CALIFORNIA 32°42'N-117°13'W NORTH ISLAND NAS (HAISEY FIELD) (KNZY)  
Amdt 4 05NOV20



# HI-TACAN Z RWY 36

TACAN NZY Chan 117	APCH CRS 360°	Rev./Idg 8000
		TDZE 19
		Appt Elev 26

AL-374 (USN)

NORTH ISLAND NAS (HAISEY FIELD) (KNZY)

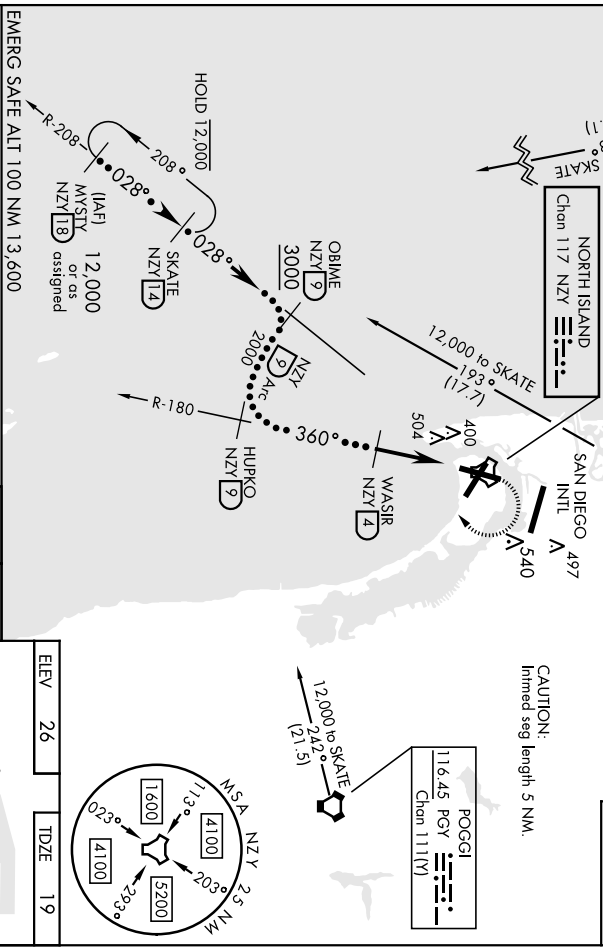
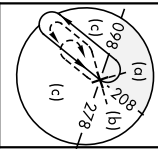
ATIS * 317.8	SOCAL APP CON	TOWER * 135.1 336.4	GND CON	CLNC DEL	PAR/ASR
	125.15 317.55	135.1 336.4	118.0 360.675	128.4 288.25	

SALSF 

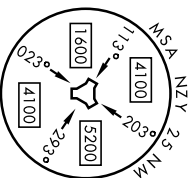
MISSED APPROACH: Climbing right turn to 2000  
Intercept the NZY TACAN R-208 to SKATE and hold.

▼ \* When ATIS Inop, increase vis to 2 miles.

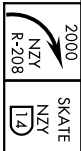
OCEANSIDE 115.3 OCN Chan 100		MISSION BAY 117.8 MZB Chan 125	
NORTH ISLAND Chan 117 NZY		SAN DIEGO INTL 497	



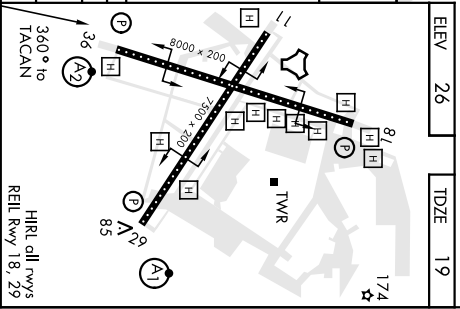
CAUTION:  
Inleted seg length 5 NM.



EMERG SAFE ALT 100 NM 13,600



2000	HUPKO (9)	WASIR (4)	TACAN (3)	ZOLOK (1.5)
1000				
2.80° TCH 47				
CATEGORY	C	D	E	
S-36 *	760-178	741 (800-178)		
CIRCLING	NOT AUTHORIZED			



SAN DIEGO, CALIFORNIA  
 32°42'N-117°13'W NORTH ISLAND NAS (HAISEY FIELD) (KNZY)  
 Amdt 4 05NOV20  
 HIRL all RWYS  
 REIL RWY 18, 29

# HI-TACAN Z RWY 36

LOC/DME-A

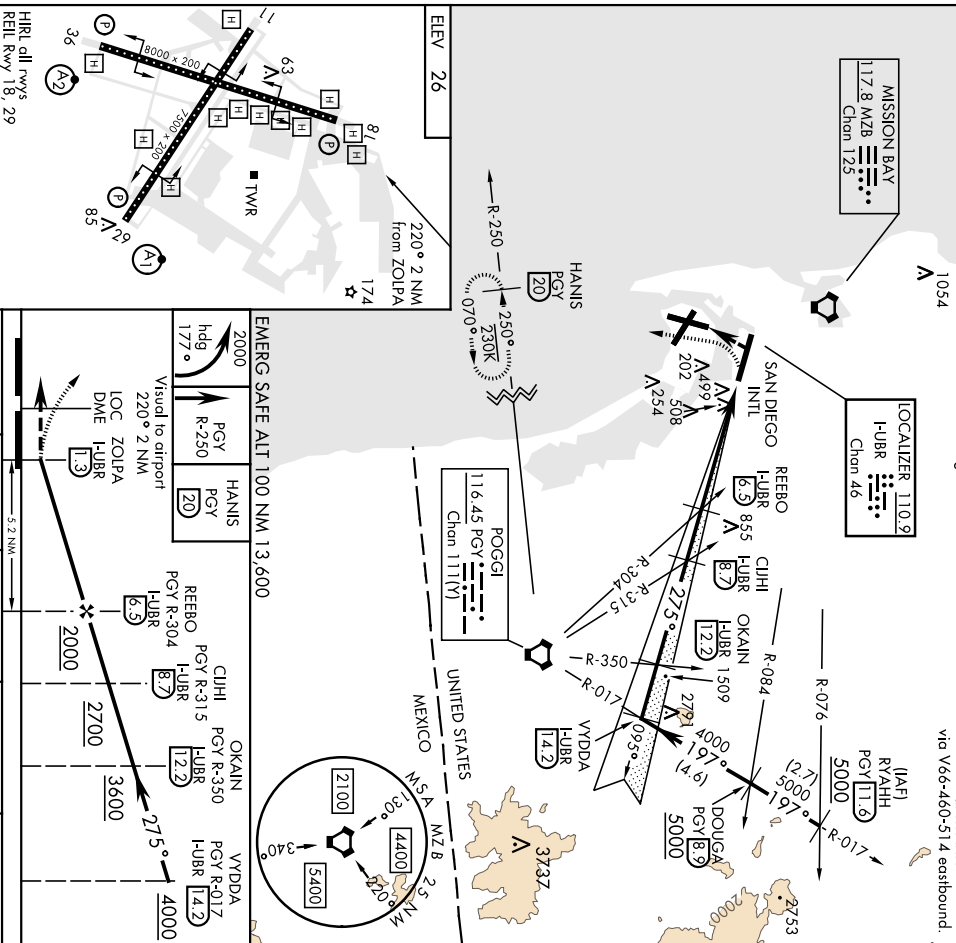
LOC/DME I-HUBR <b>110.9</b> Chan 46	APCH CRS <b>275°</b>	Rwy Idg THE Arpt Elev <b>26</b>	AL-374 (USN)	NORTH ISLAND NAS (HAISEY FIELD) (KNZY)
ATIS * <b>317.8</b>	SOCAL APP CON <b>125.15 317.55</b>	NORTH ISLAND TOWER * <b>135.1 336.4</b>	LUNDBERGH TOWER <b>118.3 338.225</b>	GND CON <b>118.0 360.675</b>
			CINCL DEL <b>128.4 288.25</b>	PAR/ASR

▲ CAUTION: Maneuvering for circling approach not authorized  
 W of Rwy 18-36 centerline. Approach authorized for Rwy 18 or left downward approach to Rwy 29 after flying down Rwy 18

† MISSED APPROACH: Climb and maintain 2000 via hdg 177°. Intercept PGY VORTAC R-250 to HANIS and hold.

† CAUTION: Do not overfly Point Loma.  
 CAUTION: Aircraft executing missed approach after beginning circling maneuver do not return to missed approach point.  
 Procedure NA or night when VGS1 Inop at San Diego Intl.

Procedure NA for arrivals at RYAHH via V66-460-514 eastbound.



SW-3, 22 FEB 2024 to 21 MAR 2024

SW-3, 22 FEB 2024 to 21 MAR 2024

HIRL all RWYS REL Rwy 18, 29					
FAF to MAP 5.2 NM					
Knots	60	90	120	150	180
Min:Sec	5.12	3.28	2.36	2.05	1.44
CATEGORY	A		B		C
CIRCLING *	860-2 1/2		834 (900-2 1/2)		880-2 1/2
					854 (900-2 1/2)
					854 (900-2 3/4)

LOC/DME-A

32°42'N-117°13'W NORTH ISLAND NAS (HAISEY FIELD) (KNZY)

# LOC/DME-B

LOC/DME I-SAN 111.55 Chon 52(Y)	APCH CRS 095°	Run/Idg THRE Arpt Elev 26	N/A N/A
---------------------------------------	------------------	---------------------------------	------------

AL-374 (USN)

NORTH ISLAND NAS (HAISEY FIELD) (KNZY)

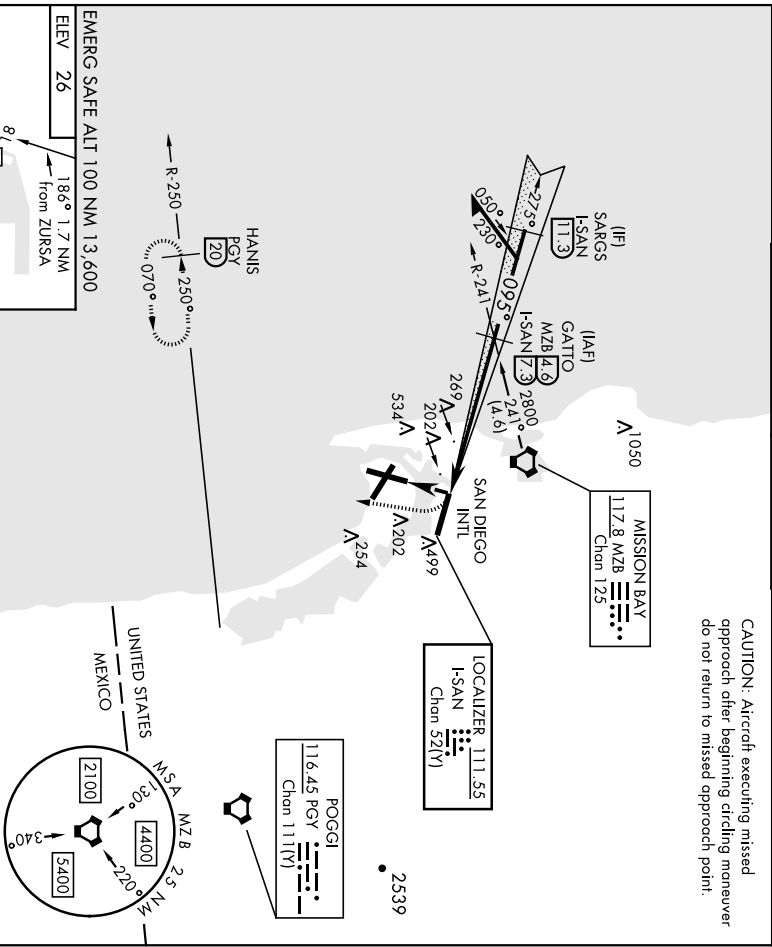
RADAR required at SARGs.

**▼** \*CAUTION: Maneuvering for circling approach not authorized W of Rwy 18-36 centerline. Approach authorized for Rwy 18 or left downwind approach to Rwy 29 after flying down Rwy 18.

MISSED APPROACH: Climb and maintain 2000 via hdg 177°, intercept PGY VORTAC R-250 to HANIS and hold.

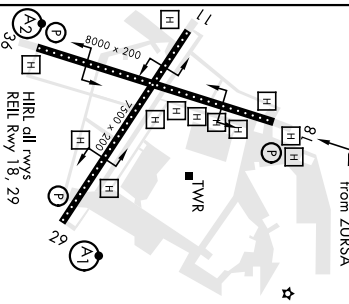
ATIS * 317.8	SOCAL APP CON 125.15 317.55	NORTH ISLAND TOWER * 135.1 336.4	LINDBERGH TOWER 118.3 338.225	GND CON 118.0 360.675 128.4 288.25	CLINC DEL	PAR/ASR
-----------------	--------------------------------	-------------------------------------	----------------------------------	---------------------------------------	-----------	---------

CAUTION: Aircraft executing missed approach after beginning circling maneuver do not return to missed approach point.



EMERG SAFE ALT 100 NM 13,600

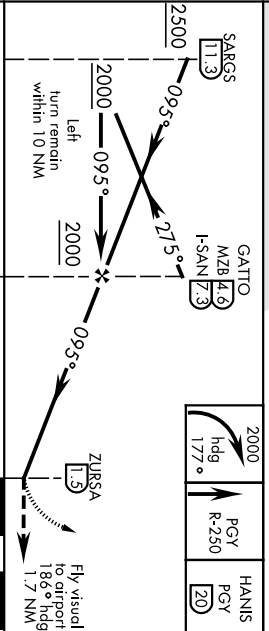
ELEV 26  
186° 1.7 NM  
From ZURSA



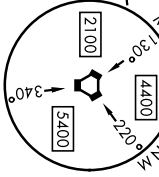
FAF to MAP 5.8 NM

Knots	60	90	120	150	180
Min:Sec	5:48	3:52	2:54	2:19	1:52

CATEGORY	A	B	C	D
CIRCLING *	860-2	834 (900-2)	880-2½	880-2%
	854 (900-2½)	854 (900-2½)	854 (900-2½)	854 (900-2½)



2000	PGY hdg 177°	HANIS PGY 20
2000	PGY R-250	HANIS PGY 20



# LOC/DME-B

32°42'N-117°13'W NORTH ISLAND NAS (HAISEY FIELD) (KNZY)


SAN DIEGO, CALIFORNIA

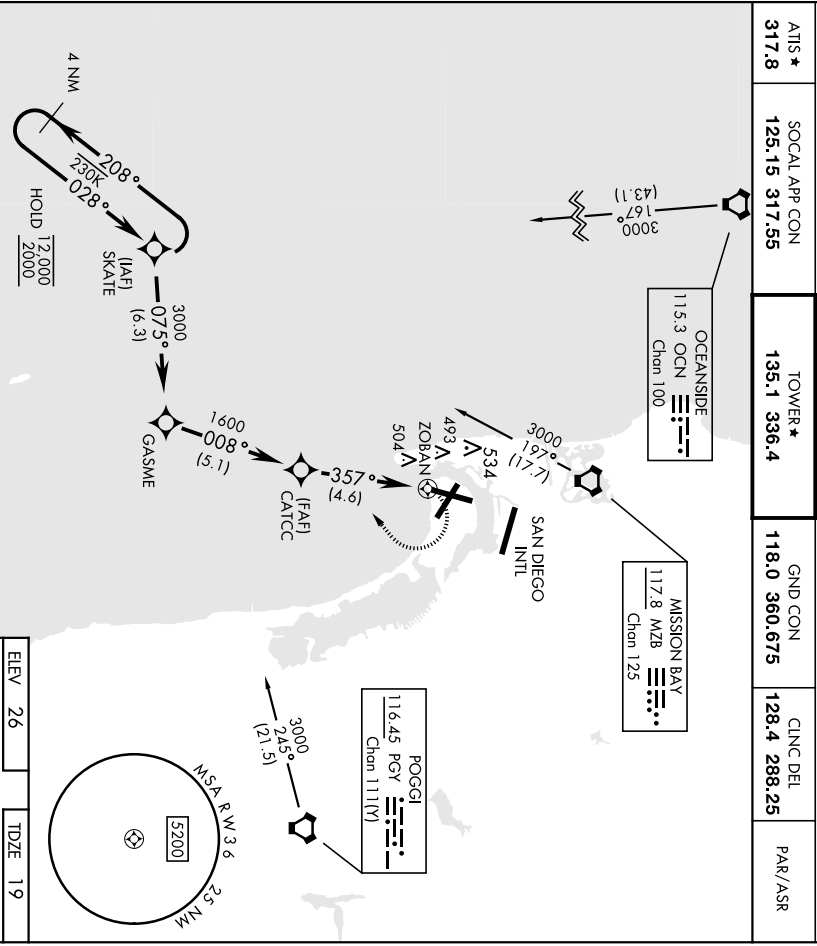
# RNAV (GPS) RWY 36

21336

AL-374 (USN)

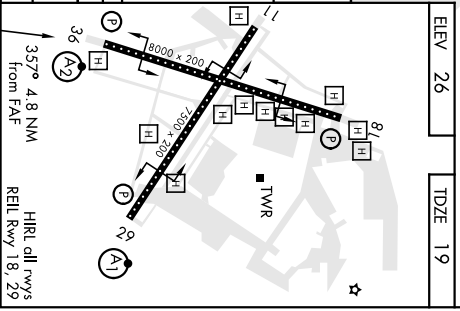
NORTH ISLAND NAS (HAISEY FIELD) (KNZY)

ARCH CRS <b>357°</b>	Rwy Idg <b>8000</b>	TOWER* <b>135.1 336.4</b>	GND CON <b>118.0 360.675</b>	CLNC DEL <b>128.4 288.25</b>	PAR/ASR
TDZE <b>19</b>	APRt Elev <b>26</b>	SOCAL APP CON <b>317.8</b>	MISSED APPROACH: Climbing right turn to 2000 direct SKATE and hold.		
RNP APCH ▼ * When AIS trop, increase CAT Ab vis to 1 mile; CAT CD vis to 1/2 miles.		SALSIF 			

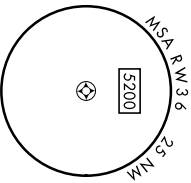


EMERG SAFE ALT 100 NM 13,600

4 NM Holding Pattern	SKATE	GASME	CATCC		2000 SKATE
	028°	075°	008°	357°	
	3000	3000	1600	1600	1.3 NM from ZOBAN
					ZOBAN
					3.000° TCH 47
CATEGORY	A	B	C	D	
LNAV MDA *	560-3/4	541 (600-3/4)	560-1/3%	541 (600-1/3%)	
CIRCLING	NOT AUTHORIZED				



ELEV	26	TDZE	19
------	----	------	----



SW-3, 22 FEB 2024 to 21 MAR 2024

SW-3, 22 FEB 2024 to 21 MAR 2024

SAN DIEGO, CALIFORNIA  
Amdt 5 05NOV20

32°42'N-117°13'W NORTH ISLAND NAS (HAISEY FIELD) (KNZY)

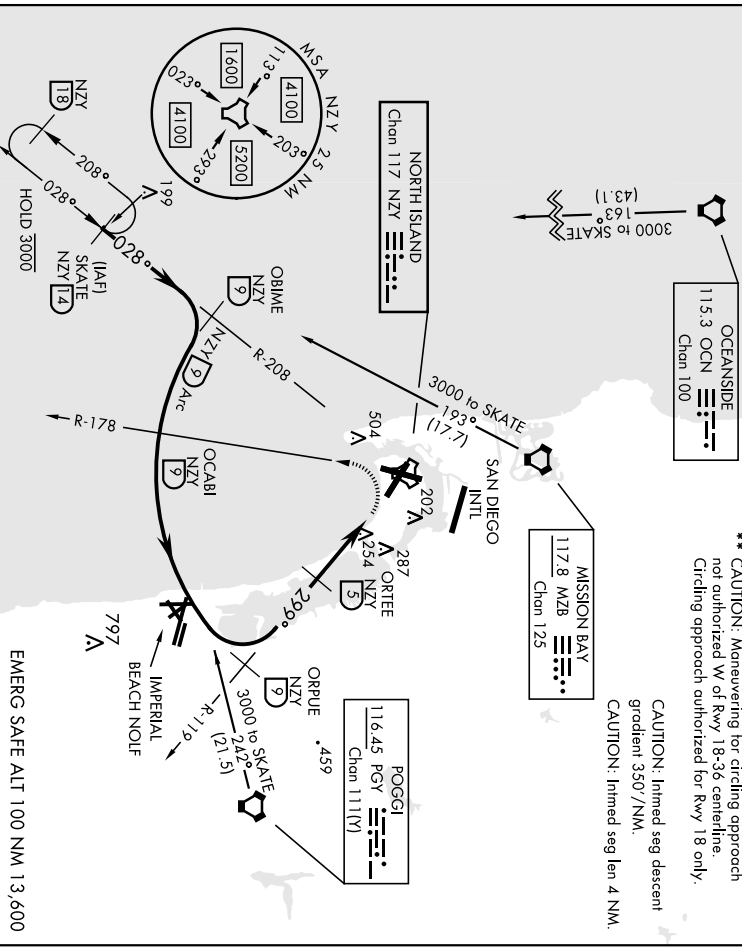
# RNAV (GPS) RWY 36

TACAN NZY Chen 117	APCH CRS 299°	Rwy Idg 7500	AL-374 (USN)	NORTH ISLAND NAS (HAISEY FIELD) (KNZY)
	TDZE Appl Elev 26			
ATIS * 317.8	SOCAL APP CON 125.15 317.55	TOWER * 135.1 336.4	ALSF-1 A1	MISSED APPROACH: Climbing left turn to 2000 via NZY TACAN R-178 to OCABI. Arc S on NZY 9 DME or to OBIME, then via NZY R-208 to SKATE end hold.
				GND CON 118.0 360.675
				CLNC DEL 128.4 288.25
				PAR/ASR

▲ \* When ATIS Inop, increase CAT Ab vis to 1 mile, CAT CD vis to 1 1/2 mile.

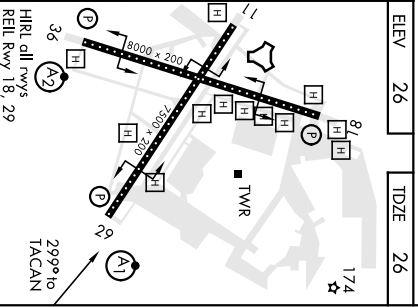
\*\* CAUTION: Maneuvering for circling approach not authorized W of Rwy 18-36 centreline. Circling approach authorized for Rwy 18 only.

CAUTION: Inland seg descent gradient 350'/NM.  
CAUTION: Inland seg len 4 NM.



EMERG SAFE ALT 100 NM 13,600

2000 NZY R-178	Arc S OCABI NZY 9	Arc 5 NZY 9 OBIME	ORPU R-119 9	OBIME R-208 9	SKATE R-208 14			
TACAN OSBUE							ORTE 5	174
CATEGORY								
A		B		C		D		
S-29 *	540-3/4	514 (600-3/4)	540-1	514 (600-1)				
ⓐ CIRCLING **	620-1	594 (600-1)	NOT AUTHORIZED					

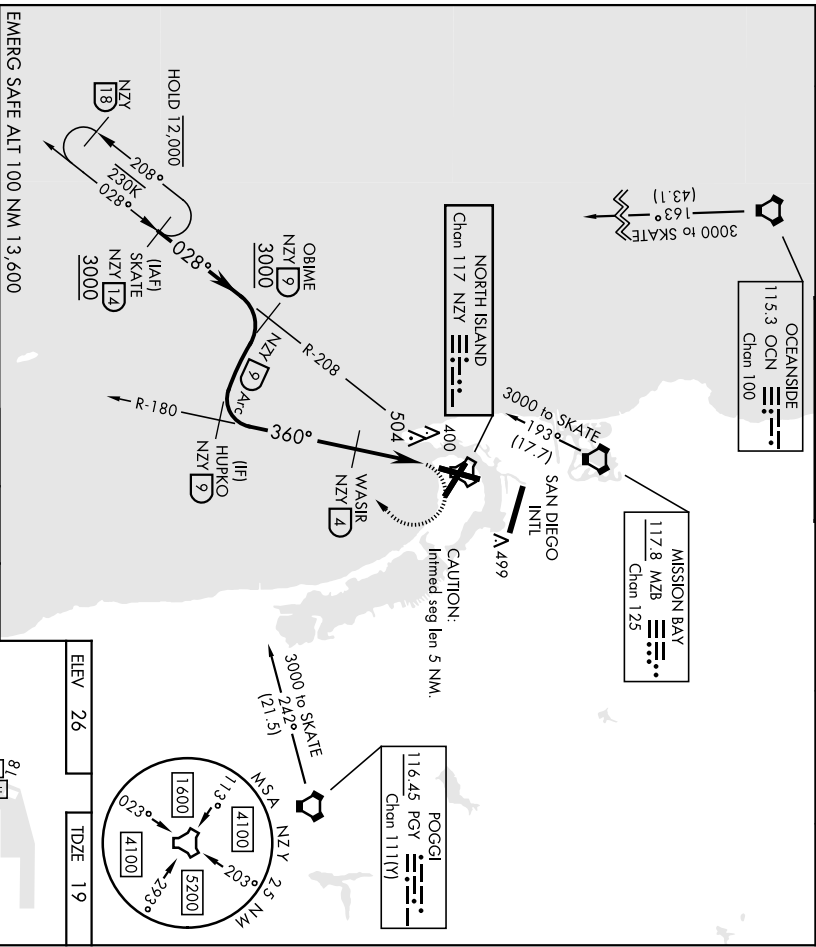


SAN DIEGO, CALIFORNIA 32°42'N-117°13'W NORTH ISLAND NAS (HAISEY FIELD) (KNZY)  
Amdt 4 05NOV20

TACAN RWY 29

TACAN NZY Chan 117	APCH CRS 360°	Rev./Idg TDZE Appl Elev 26	8000	AL-374 (USN)	NORTH ISLAND NAS (HAISEY FIELD) (KNZY)
ATIS * 317.8	SOCAL APP CON 125.15	TOWER * 135.1	336.4	SALSF A2	MISSED APPROACH: Climbing right turn to 2000 to intercept the NZY TACAN R-208 to SKATE and hold.
				GND CON	118.0
				CLNC DEL	128.4
				PAR/ASR	288.25

▼ \*\*When ATIS inop, increase CAT A vis to 1 mile, CAT B vis to 1½ miles, CAT CD vis to 2 miles.



EMERG SAFE ALT 100 NM 13,600

CATEGORY	A	B	C	D
S-36 *	760 ¾ 741 (800-¾)	760-1 741 (800-1)	760-1 7/8 741 (800-1 7/8)	
CIRCLING	NOT AUTHORIZED			



