

WAAS CH <b>99629</b> <b>W11A</b>	APP CRS <b>112°</b>	Rwy Idg TDZE Apt Elev	<b>3198</b> <b>604</b> <b>604</b>
--	------------------------	-----------------------------	---

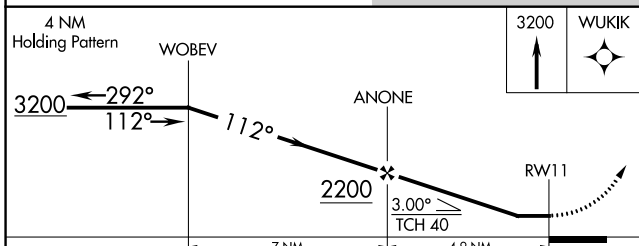
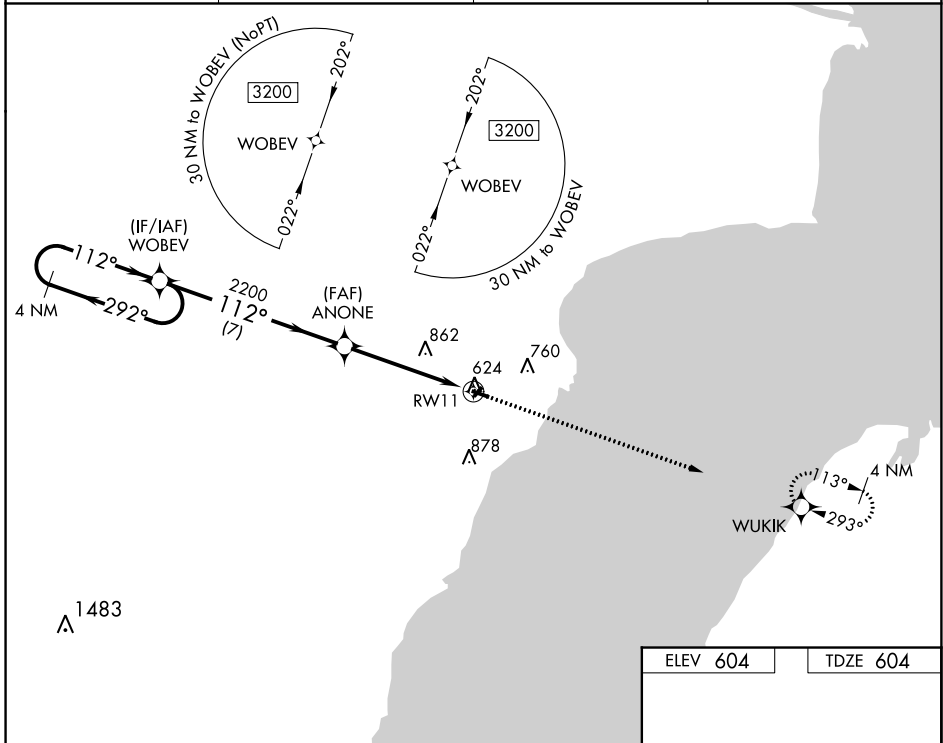
# RNAV (GPS) RWY 11

OCONTO/J DOUGLAS BAKE MUNI (OCQ)

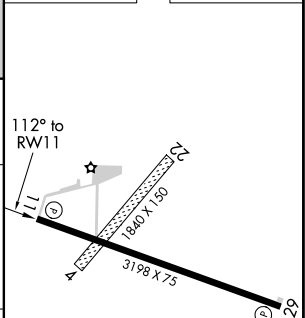
**▼** Use Menominee, MI altimeter setting; when not received, use Green Bay altimeter setting and increase all MDA 40 feet and visibility Circling Cat C 1/4 SM.  
**▲ NA** Procedure NA at night. DME/DME RNP-0.3 NA. Visibility reduction by helicopters NA.

MISSED APPROACH:  
Climb to 3200 direct WUKIK and hold.

AWOS-3 <b>120.925</b>	MNM AWOS-3PT <b>109.6</b>	GREEN BAY APP CON ★ <b>120.3 338.2</b>	UNICOM <b>122.8 (CTAF) 0</b>
--------------------------	------------------------------	---	---------------------------------



ELEV 604	TDZE 604
----------	----------



CATEGORY	A	B	C	D
LP MDA	1200-1 596 (600-1)		1200-1 <sup>3</sup> / <sub>4</sub> 596 (600-1 <sup>3</sup> / <sub>4</sub> )	NA
LN AV MDA	1220-1 616 (700-1)		1220-1 <sup>3</sup> / <sub>4</sub> 616 (700-1 <sup>3</sup> / <sub>4</sub> )	NA
CIRCLING	1220-1 616 (700-1)		1260-1 <sup>3</sup> / <sub>4</sub> 656 (700-1 <sup>3</sup> / <sub>4</sub> )	NA

REIL Rwy 11 and 29 0  
MIRL Rwy 11-29 0

EC-3, 27 JAN 2022 to 24 FEB 2022

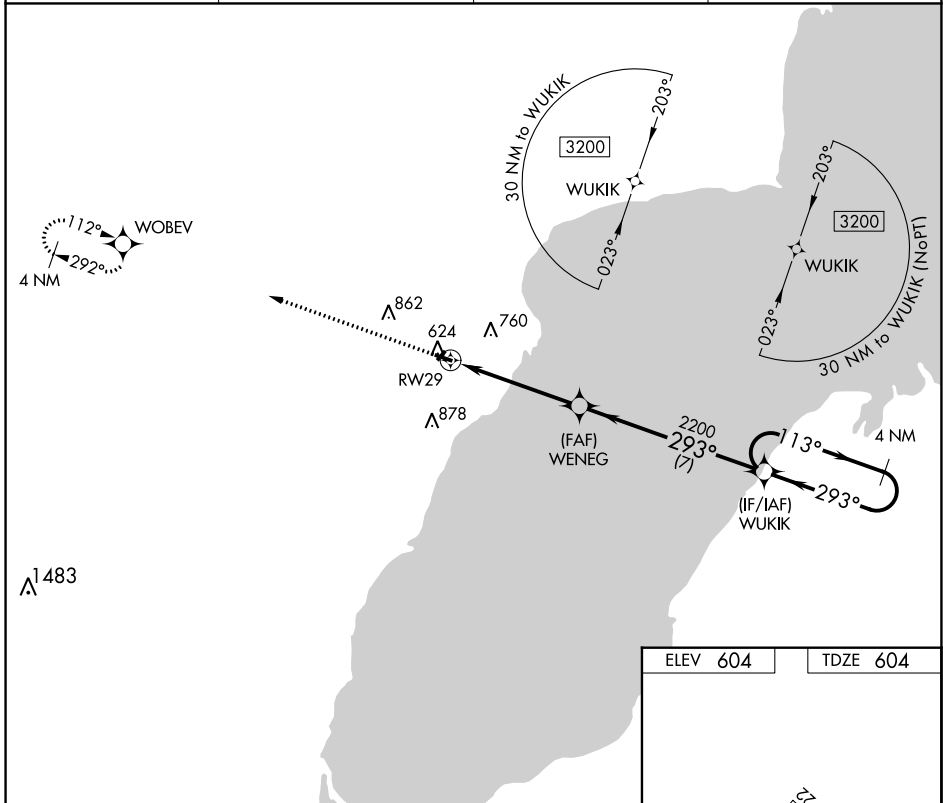
EC-3, 27 JAN 2022 to 24 FEB 2022

APP CRS	Rwy Idg	<b>3198</b>
<b>293°</b>	TDZE	<b>604</b>
	Apt Elev	<b>604</b>

# RNAV (GPS) RWY 29

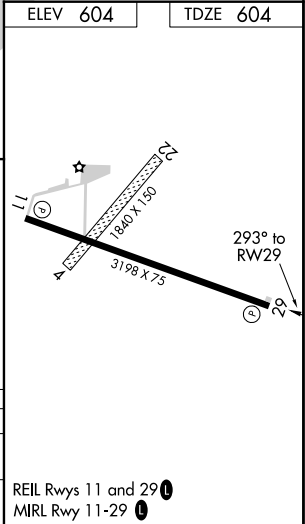
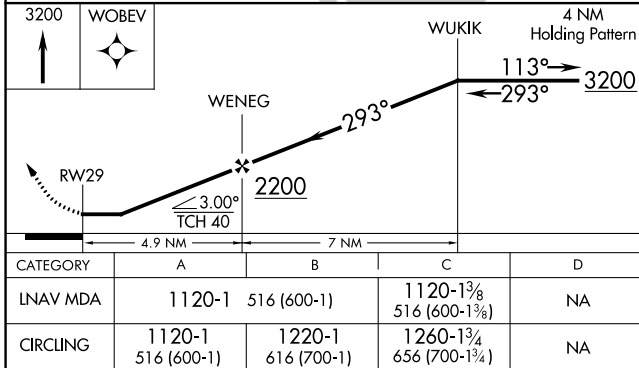
OCONTO/J DOUGLAS BAKE MUNI (OCQ)

<p><b>NA</b> Use Menominee altimeter setting; when not received, use Green Bay altimeter setting and increase all MDA 40 feet; increase LNAV/Circling Cat C visibility 1/4 mile. Procedure NA at night. DME/DME RNP-0.3 NA. Visibility reduction by helicopters NA.</p>		<p><b>MISSED APPROACH:</b> Climb to 3200 direct WOBEV and hold.</p>	
AWOS-3 <b>120.925</b>	MNM AWOS-3PT <b>109.6</b>	GREEN BAY APP CON * <b>120.3 338.2</b>	UNICOM <b>122.8 (CTAF)</b>



EC-3, 27 JAN 2022 to 24 FEB 2022

EC-3, 27 JAN 2022 to 24 FEB 2022



REIL Rwys 11 and 29  
MIRL Rwy 11-29