

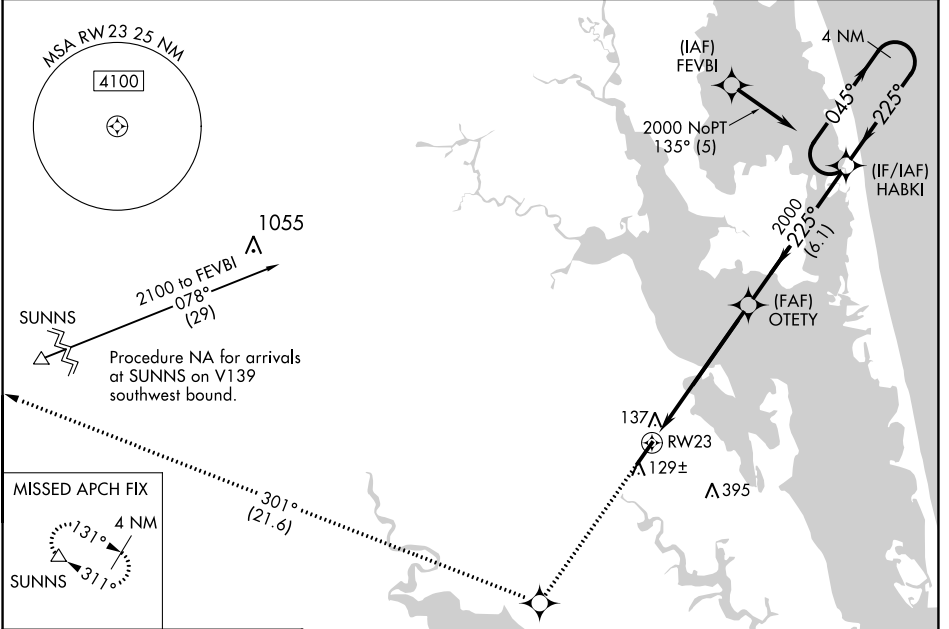
WAAS CH 97408 W23A	APP CRS 225°	Rwy Idg TDZE 18 Apt Elev 18	5502
--	------------------------	---	-------------

RNAV (GPS) RWY 23

CURRITUCK COUNTY RGNL (ONX)

RNP APCH.	For uncompensated Baro-VNAV systems, LNAV/VNAV NA below -15°C (5°F) or above 49°C (120°F). Rwy 23 helicopter visibility reduction below ¾ SM NA.	MISSED APPROACH: Climb to 2000 direct EDORY and right turn on track 301° to SUNNS and hold.
-----------	--	---

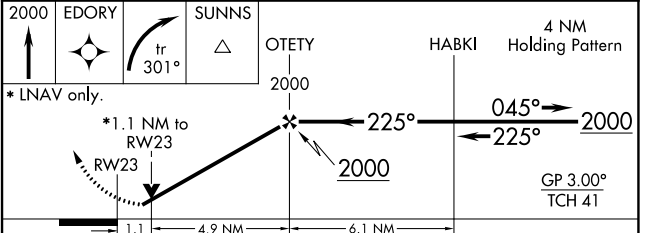
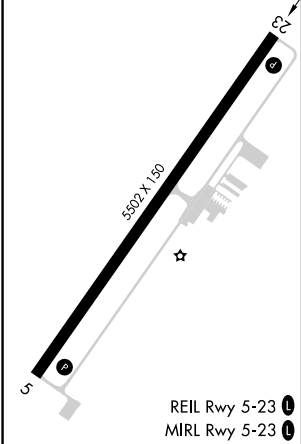
AWOS-3 119.775	OCEANA APP CON 123.9 266.8	CTAF 122.9 0
--------------------------	--------------------------------------	------------------------



SE-2, 22 FEB 2024 to 21 MAR 2024

SE-2, 22 FEB 2024 to 21 MAR 2024

ELEV 18	TDZE 18
---------	---------



CATEGORY	A	B	C	D
LPV DA		384-1¼	366 (400-1¼)	
LNAV/VNAV DA		424-1½	406 (500-1½)	
LNAV MDA	400-1	382 (400-1)	400-1¼	382 (400-1¼)
CIRCLING	440-1 422 (500-1)	480-1 462 (500-1)	480-1½ 462 (500-1½)	760-2½ 742 (800-2½)

WAAS CH 49008 W05A	APP CRS 045°	Rwy Idg TDZE Apt Elev	5502 18 18
--	------------------------	-----------------------------	---------------------------------------

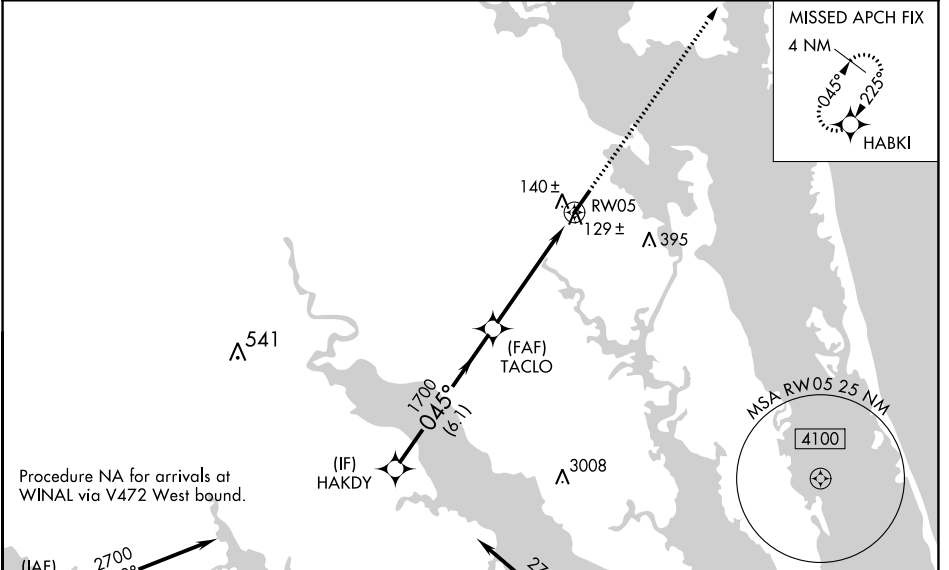
RNAV (GPS) RWY 5

CURRITUCK COUNTY RGNL (ONX)

⚠ Baro-VNAV NA when using Oceana NAS/Apollo Soucek altimeter setting. For uncompensated Baro-VNAV systems, LNAV/VNAV NA below -15°C (5°F) or above 49°C (120°F). DME/DME RNP-0.3 NA. Visibility reduction by helicopters NA. Procedure NA when tethered balloon located approximately 11.4 NM southwest of airport is flying. When local altimeter setting not received, use Oceana NAS/Apollo Soucek altimeter setting and increase all DA 59 feet, and all MDA 60 feet; increase LNAV Cat. C and D visibility ¼ mile.

MISSED APPROACH: Climb to 2000 direct HABKI and hold.

AWOS-3 119.775	OCEANA APP CON 123.9 266.8	CTAF 122.90
--------------------------	--------------------------------------	-----------------------

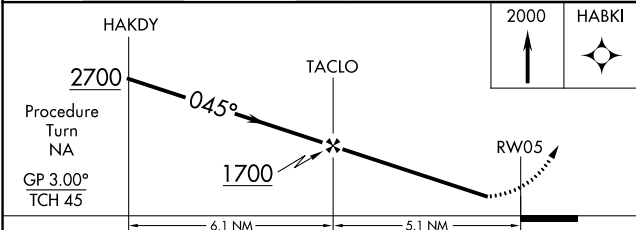


Procedure NA for arrivals at WINAL via V472 West bound.

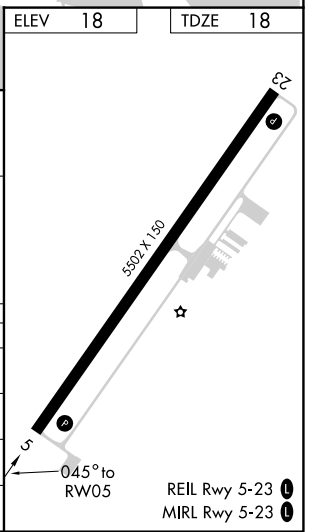
(IAF) WINAL 2700 -078° (14.3)

Procedure NA for arrivals at OCSIP via V266 Southeast bound.

(IAF) OCSIP 2700 -321° (9.5)



CATEGORY	A	B	C	D
LPV DA		343-1¼	325 (400-1¼)	
LNAV/VNAV DA		410-1½	392 (400-1½)	
LNAV MDA	400-1	382 (400-1)		400-1¼ 382 (400-1¼)
CIRCLING	440-1 422 (500-1)	480-1 462 (500-1)	480-1½ 462 (500-1½)	760-2½ 742 (800-2½)



SE-2, 22 FEB 2024 to 21 MAR 2024

SE-2, 22 FEB 2024 to 21 MAR 2024

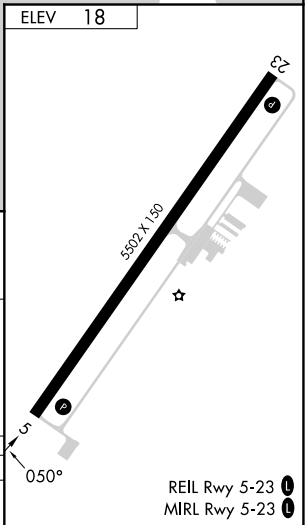
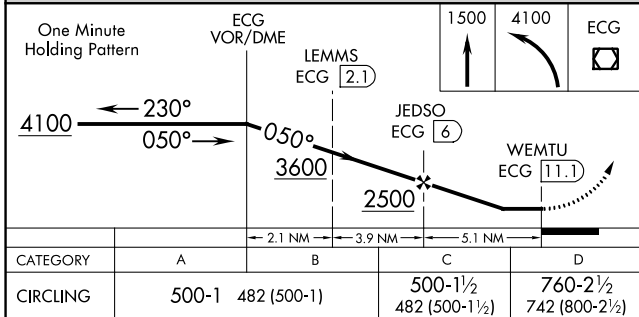
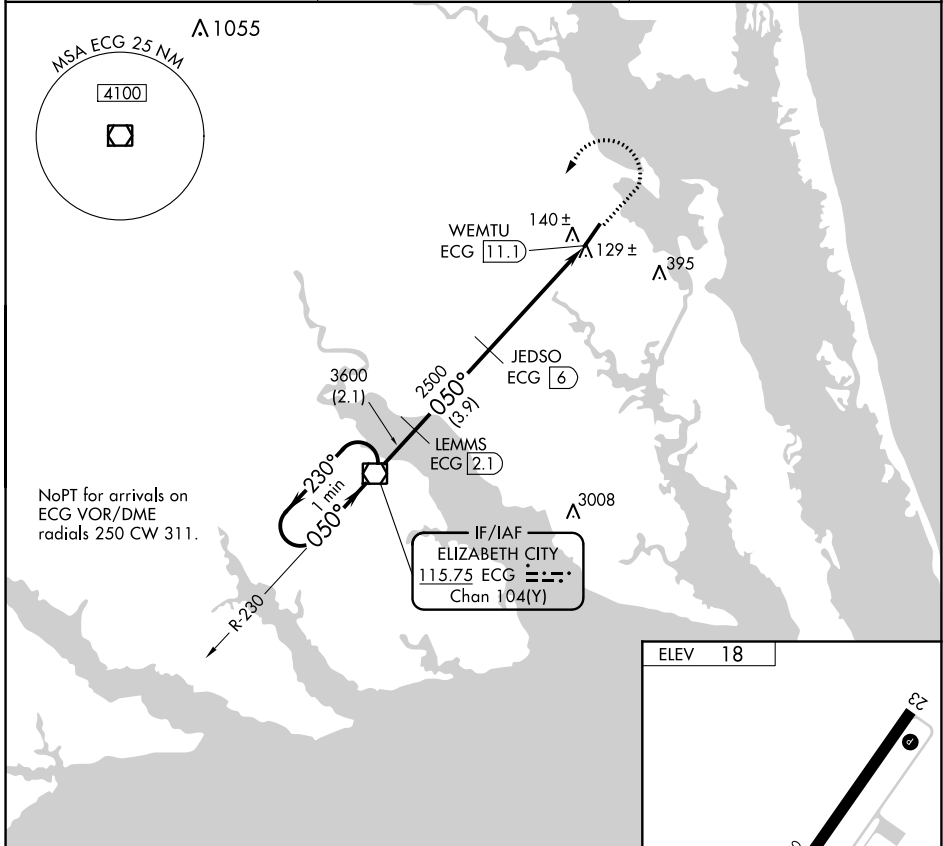
VOR/DME ECG 115.75 Chan 104(Y)	APP CRS 050°	Rwy Idg TDZE Apt Elev	N/A N/A 18
--	------------------------	-----------------------------	---------------------------------------

VOR/DME-A
CURRITUCK COUNTY RGNL (ONX)

When local altimeter setting not received, use Oceana NAS/ Apollo Soucek altimeter setting and increase all MDA 60 feet.
 Procedure NA when tethered balloon located approximately 11.4 NM southwest of airport is flying.

MISSED APPROACH: Climb to 1500 then climbing left turn to 4100 direct ECG VOR/DME and hold, continue climb-in-hold to 4100.

AWOS-3 119.775	OCEANA APP CON 123.9 266.8	CTAF 122.9 0
--------------------------	--------------------------------------	------------------------



SE-2, 22 FEB 2024 to 21 MAR 2024

SE-2, 22 FEB 2024 to 21 MAR 2024