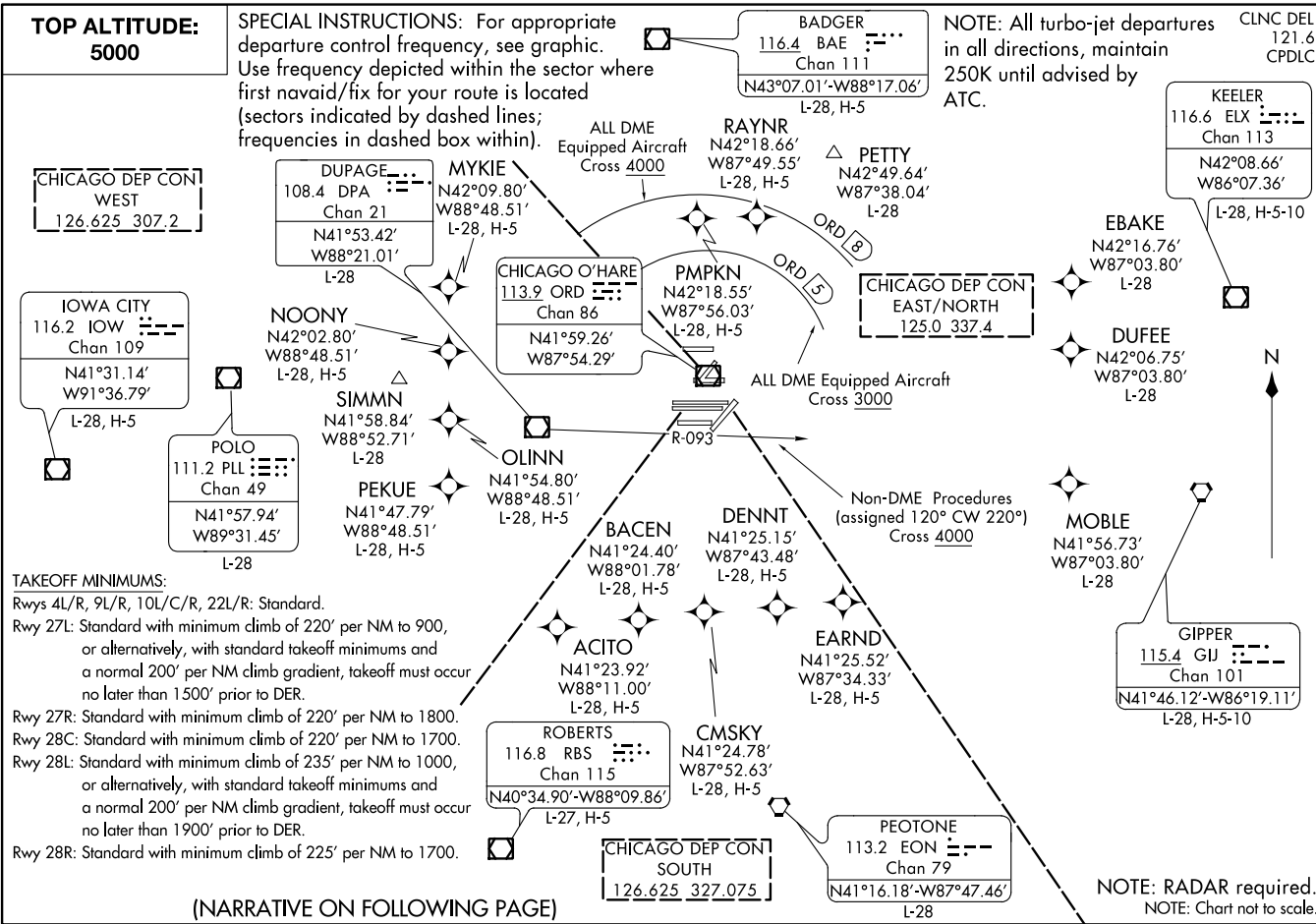


(ORD4:ORD) 13SEP18

O'HARE FOUR DEPARTURE

CHICAGO, ILLINOIS  
CHICAGO O'HARE INTL (ORD)



**TOP ALTITUDE:**  
5000

**SPECIAL INSTRUCTIONS:** For appropriate departure control frequency, see graphic. Use frequency depicted within the sector where first navaid/fix for your route is located (sectors indicated by dashed lines; frequencies in dashed box within).

**BADGER**  
116.4 BAE  
Chan 111  
N43°07.01'-W88°17.06'  
L-28, H-5

**NOTE:** All turbo-jet departures in all directions, maintain 250K until advised by ATC.

**CLNC DEL**  
121.6  
CPDLC

**CHICAGO DEP CON WEST**  
126.625 307.2

**DUPAGE**  
108.4 DPA  
Chan 21  
N41°53.42'  
W88°21.01'  
L-28

**MYKIE**  
N42°09.80'  
W88°48.51'  
L-28, H-5

**CHICAGO O'HARE**  
113.9 ORD  
Chan 86  
N41°59.26'  
W87°54.29'

**PMPKN**  
N42°18.55'  
W87°56.03'  
L-28, H-5

**CHICAGO DEP CON EAST/NORTH**  
125.0 337.4

**IOWA CITY**  
116.2 IOW  
Chan 109  
N41°31.14'  
W91°36.79'  
L-28, H-5

**NOONY**  
N42°02.80'  
W88°48.51'  
L-28, H-5

**SIMMN**  
N41°58.84'  
W88°52.71'  
L-28

**POLO**  
111.2 PLL  
Chan 49  
N41°57.94'  
W89°31.45'  
L-28

**PEKUE**  
N41°47.79'  
W88°48.51'  
L-28, H-5

**OLINN**  
N41°54.80'  
W88°48.51'  
L-28, H-5

**BACEN**  
N41°24.40'  
W88°01.78'  
L-28, H-5

**DENNT**  
N41°25.15'  
W87°43.48'  
L-28, H-5

**EARND**  
N41°25.52'  
W87°34.33'  
L-28, H-5

**MOBLE**  
N41°56.73'  
W87°03.80'  
L-28

**TAKEOFF MINIMUMS:**  
Rwys 4L/R, 9L/R, 10L/C/R, 22L/R: Standard.  
Rwy 27L: Standard with minimum climb of 220' per NM to 900, or alternatively, with standard takeoff minimums and a normal 200' per NM climb gradient, takeoff must occur no later than 1500' prior to DER.  
Rwy 27R: Standard with minimum climb of 220' per NM to 1800.  
Rwy 28C: Standard with minimum climb of 220' per NM to 1700.  
Rwy 28L: Standard with minimum climb of 235' per NM to 1000, or alternatively, with standard takeoff minimums and a normal 200' per NM climb gradient, takeoff must occur no later than 1900' prior to DER.  
Rwy 28R: Standard with minimum climb of 225' per NM to 1700.

**ROBERTS**  
116.8 RBS  
Chan 115  
N40°34.90'-W88°09.86'  
L-27, H-5

**CMSKY**  
N41°24.78'  
W87°52.63'  
L-28, H-5

**CHICAGO DEP CON SOUTH**  
126.625 327.075

**PEATONE**  
113.2 EON  
Chan 79  
N41°16.18'-W87°47.46'  
L-28

**GIPPER**  
115.4 GIJ  
Chan 101  
N41°46.12'-W86°19.11'  
L-28, H-5-10

**NOTE:** RADAR required.  
NOTE: Chart not to scale.

(ORD4:ORD) 18256

AL-166 (FAA)

CHICAGO O'HARE INTL (ORD)  
CHICAGO, ILLINOIS

(NARRATIVE ON FOLLOWING PAGE)

# O'HARE FOUR DEPARTURE



## DEPARTURE ROUTE DESCRIPTION

ALL AIRCRAFT: Expect RADAR vectors to first enroute navaid/fix.

Expect clearance to requested altitude/flight level ten minutes after departure.

ALL DME EQUIPPED AIRCRAFT: Cross 5 DME arc of ORD VOR/DME

at or above 3000 MSL, cross 8 DME arc of ORD VOR/DME at or above 4000, maintain 5000 or assigned altitude. If unable to comply advise ATC as soon as possible prior to departure.

NON-DME PROCEDURES: Aircraft initially assigned heading 120 CW 220, cross DPA VOR/DME R-093 at or above 4000, maintain 5000 or assigned altitude. If unable to comply advise ATC as soon as possible prior to departure.

EC-3, 13 SEP 2018 to 11 OCT 2018

EC-3, 13 SEP 2018 to 11 OCT 2018