


LOC I-PDT <b>110.3</b>	APP CRS <b>254°</b>	Rwy ldg 6301
		TDZE 1487
		Apt Elev 1497

# ILS or LOC RWY 26

EASTERN OREGON RGNL AT PENDLETON (PDT)

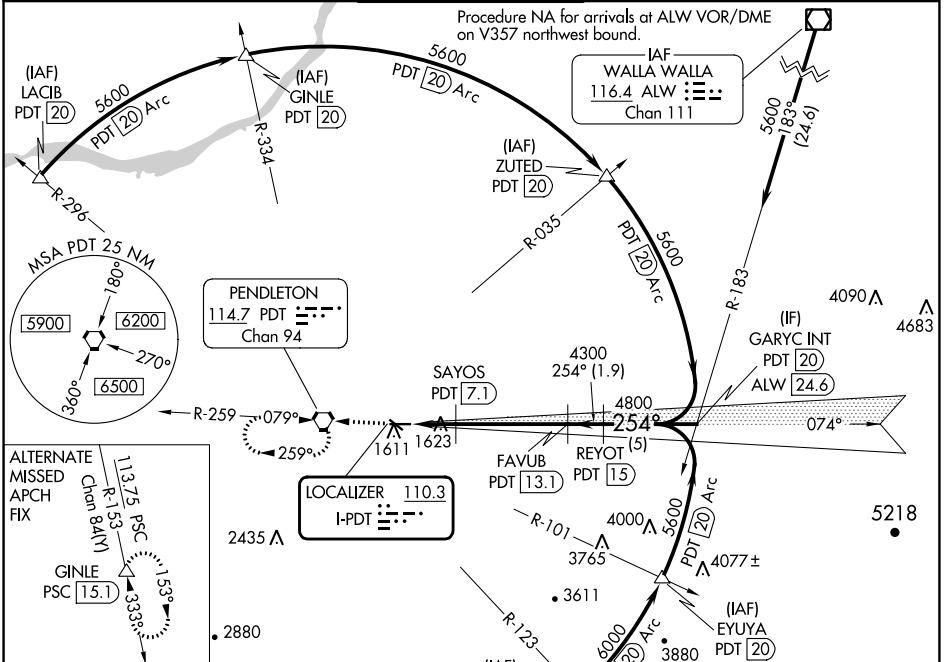
DME required.

**▼** DME from PDT VORTAC. Simultaneous reception of I-PDT and PDT DME required.  
**▲** \*RVR 1800 authorized with use of FD or AP or HUD to DA.

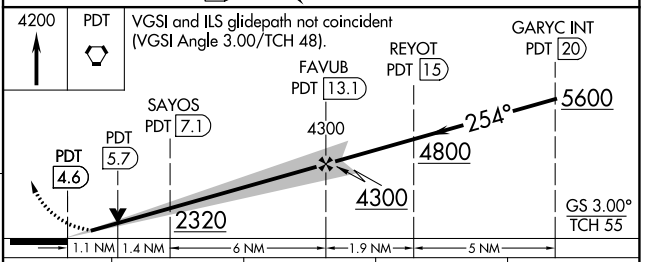
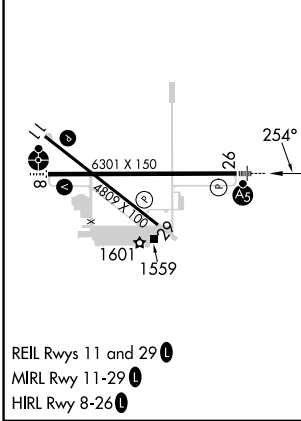
MALSR 

MISSED APPROACH: Climb to 4200 direct PDT VORTAC and hold, continue climb-in-hold to 4200.

ASOS <b>118.325</b>	SPOKANE APP CON * <b>133.15 379.15</b>	PENDLETON TOWER * <b>119.7 (CTAF) 257.8</b>	GND CON <b>121.9 257.8</b>	UNICOM <b>122.95</b>
------------------------	---	--	-------------------------------	-------------------------



ELEV 1497	<b>D</b>	TDZE 1487
-----------	----------	-----------



CATEGORY	A	B	C	D
S-ILS 26*	1687/24 200 (200-½)			
S-LOC 26	1880/24	393 (400-½)	1880/40	393 (400-¾)
CIRCLING	1920-1	1960-1	1980-1½	2200-2¼
	423 (500-1)	463 (500-1)	483 (500-1½)	703 (800-2¼)

NW-1, 22 FEB 2024 to 21 MAR 2024

NW-1, 22 FEB 2024 to 21 MAR 2024

WAAS CH <b>82712</b> <b>W11A</b>	APP CRS <b>112°</b>	Rwy Idg <b>4809</b> TDZE <b>1487</b> Apt Elev <b>1497</b>
--	------------------------	---

# RNAV (GPS) RWY 11

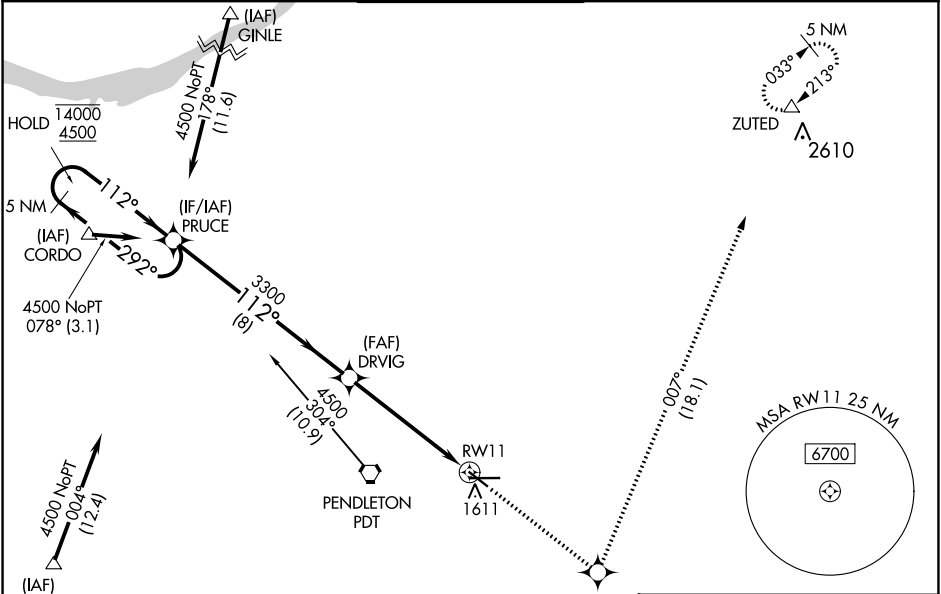
EASTERN OREGON RGNL AT PENDLETON (PDT)

RNP APCH.

Baro-VNAV and VDP NA when using Walla Walla altimeter setting. For uncompensated Baro-VNAV systems, LNAV/VNAV NA below -17°C or above 54°C. When local altimeter setting not received, use Walla Walla altimeter setting and increase all DA/MDA 120 feet; VNAV all Cats visibility 1/8 SM, LNAV Cat C visibility 3/8 SM, and Cat D visibility 1/8 SM, Circling Cat C visibility 1/4 SM and Circling Cat D visibility 1/2 SM.

MISSED APPROACH:  
Climb to 5000 direct  
ADXAB and on track  
007° to ZUTED and hold.

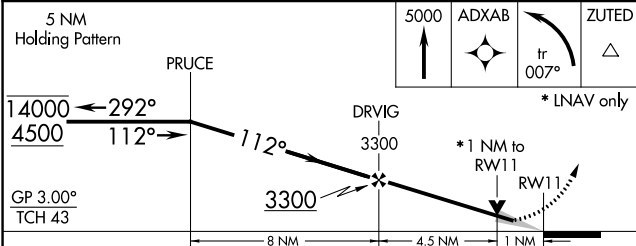
ASOS <b>118.325</b>	SPOKANE APP CON * <b>133.15 379.15</b>	PENDLETON TOWER * <b>119.7 (CTAF) 257.8</b>	GND CON <b>121.9 257.8</b>	UNICOM <b>122.95</b>
------------------------	---	--	-------------------------------	-------------------------



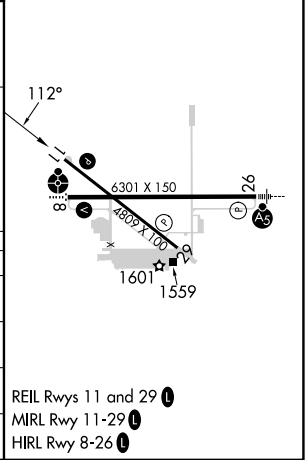
NW-1, 22 FEB 2024 to 21 MAR 2024

NW-1, 22 FEB 2024 to 21 MAR 2024

ELEV <b>1497</b>	<b>D</b> TDZE <b>1487</b>
------------------	---------------------------



CATEGORY	A	B	C	D
LPV DA	1737-1 250 (300-1)			
LNAV/VNAV DA	1850-1 363 (400-1 1/4)			
LNAV MDA	1860-1 373 (400-1)		1860-1 373 (400-1 1/4)	
<b>C</b> CIRCLING	1920-1 423 (500-1)	1960-1 463 (500-1)	1980-1 1/2 483 (500-1 1/2)	2200-2 1/4 703 (800-2 1/4)



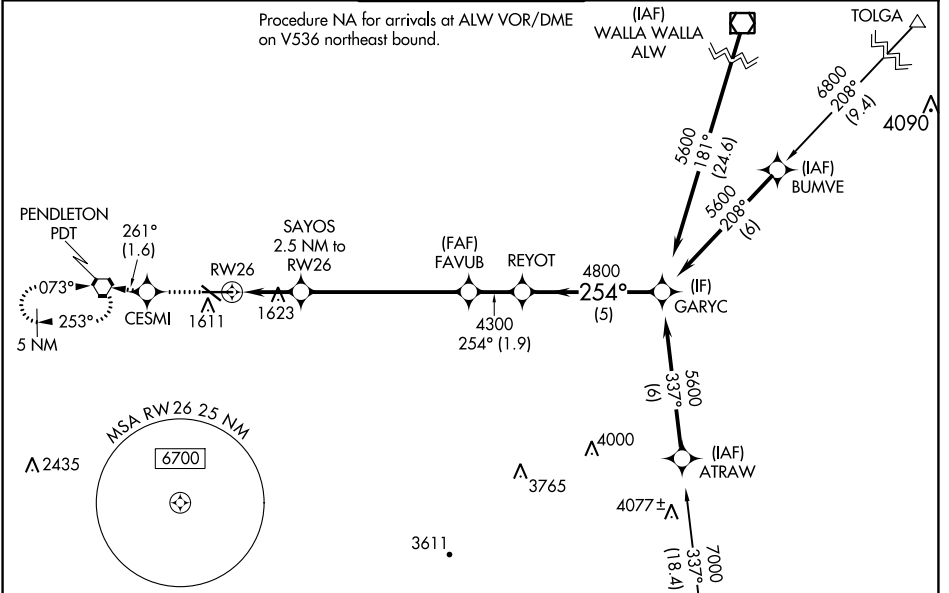
WAAS CH <b>78412</b> W26A	APP CRS <b>254°</b>	Rwy Idg TDZE Apt Elev	<b>6301</b> <b>1487</b> <b>1497</b>
---------------------------------	------------------------	-----------------------------	---

# RNAV (GPS) RWY 26

EASTERN OREGON RGNL AT PENDLETON (PDT)

RNP APCH.	<p><b>⚠</b> Circling Rwy 11 NA at night. For uncompensated Baro-VNAV systems, LNAV/VNAV NA below -17°C or above 54°C. For inop ALS, increase LNAV/VNAV all Cats visibility to RVR 4500. #RVR 1800 authorized with the use of FD or AP or HUD to DA.</p>	MALSRL 	MISSED APPROACH: Climb to 4300 direct CESMI and on track 261° to PDT VORTAC and hold, continue climb-in-hold to 4300.
-----------	---	------------	---

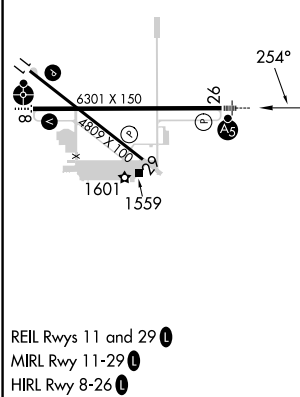
ASOS <b>118.325</b>	SPOKANE APP CON * <b>133.15 379.15</b>	PENDLETON TOWER * <b>119.7 (CTAF) 257.8</b>	GND CON <b>121.9 257.8</b>	UNICOM <b>122.95</b>
------------------------	---	--	-------------------------------	-------------------------



ELEV 1497	<b>D</b> TDZE 1487
-----------	--------------------

Procedure NA for arrivals at LACED on V4 southeast bound.

4300 CESMI	Ir 261°	PDT	VGSI and RNAV glidepath not coincident (VGSI Angle 3.00/TCH 48).
* LNAV only		SAYOS 2.5 NM to RW26	FAYUB 4300
RW26		* 1.1 NM to RW26	REYOT 4800
1.1 NM		1.4 NM	6 NM
1.9 NM		5 NM	GARYC 5600
2320*		4300	GP 3.00° TCH 55



- REIL Rwy 11 and 29
- MIRL Rwy 11-29
- HIRL Rwy 8-26

NW-1, 22 FEB 2024 to 21 MAR 2024

NW-1, 22 FEB 2024 to 21 MAR 2024

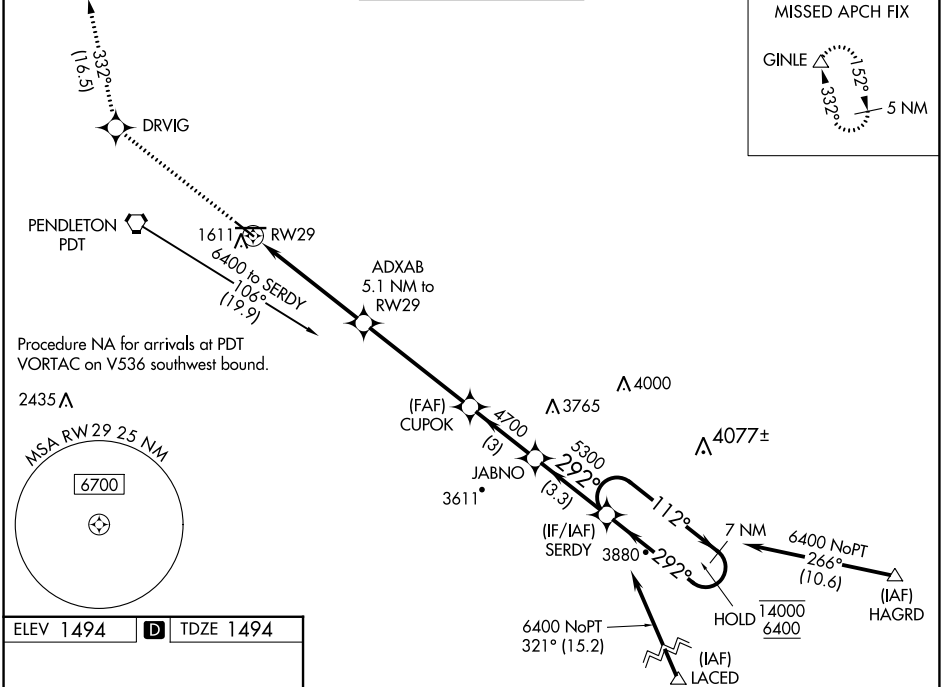
WAAS CH <b>42513</b> <b>W29A</b>	APP CRS <b>292°</b>	Rwy Idg <b>4809</b> TDZE <b>1494</b> Apt Elev <b>1494</b>
--	------------------------	---

# RNAV (GPS) RWY 29

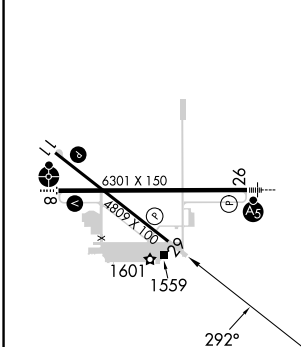
EASTERN OREGON RGNL AT PENDLETON (PDT)

RNP APCH - GPS.	<p><b>⚠</b> Rwy 29 helicopter visibility reduction below 1 SM NA. <b>⚠</b> Baro-VNAV NA. Straight-in Rwy 29 NA at night, Circling Rwy 8, 29 NA at night.</p>	MISSED APPROACH: Climb to 5000 direct DRVIG and on track 332° to GINLE and hold.
-----------------	--	--

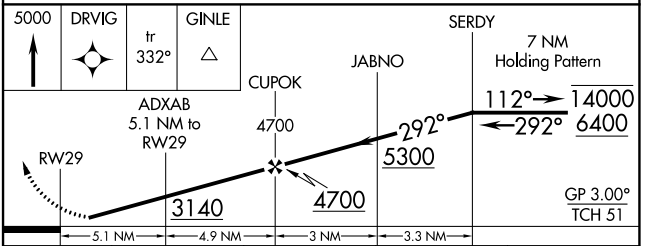
ASOS <b>118.325</b>	SPOKANE APP CON * <b>133.15 379.15</b>	PENDLETON TOWER * <b>119.7 (CTAF) 257.8</b>	GND CON <b>121.9 257.8</b>	UNICOM <b>122.95</b>
------------------------	---	--	-------------------------------	-------------------------



ELEV 1494	<b>D</b>	TDZE 1494
-----------	----------	-----------



- REIL Rws 11 and 29
- MIRL Rwy 11-29
- HIRL Rwy 8-26



CATEGORY	A	B	C	D
LPV DA	1769-1		275 (300-1)	
LNAV/ VNAV DA	1800-1		306 (400-1)	
LNAV MDA	1880-1	386 (400-1)	1880-1½	386 (400-1½)
<b>C</b> CIRCLING	1920-1 426 (500-1)	1960-1 466 (500-1)	1980-1½ 486 (500-1½)	2200-2¼ 706 (800-2¼)

NW-1, 22 FEB 2024 to 21 MAR 2024

NW-1, 22 FEB 2024 to 21 MAR 2024

WAAS CH <b>73012</b> <b>W08A</b>	APP CRS <b>074°</b>	Rwy Idg TDZE Apt Elev	<b>6301</b> <b>1486</b> <b>1497</b>
--	------------------------	-----------------------------	---

# RNAV (GPS) RWY 8

EASTERN OREGON RGNL AT PENDLETON (PDT)

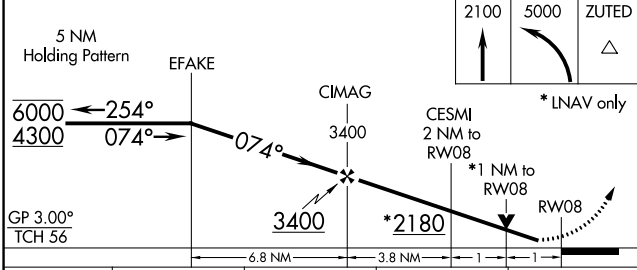
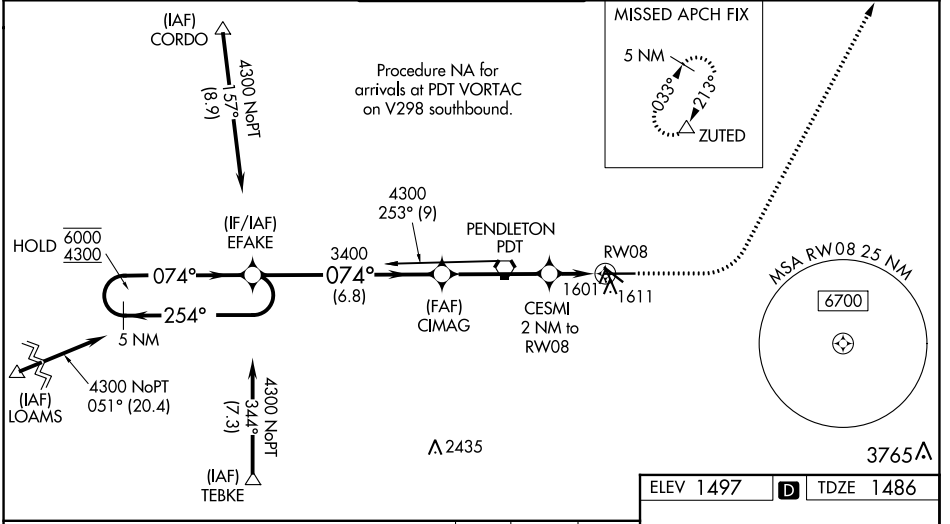
RNP APCH.

**⚠** Circling to Rwy 11 NA at night. Baro-VNAV and VDP NA when using Walla Walla altimeter setting. Rwy 8 helicopter visibility reduction below 3/4 SM NA. For uncompensated Baro-VNAV systems, LNAV/VNAV NA below -17°C or above 54°C. Inop table does not apply to LPV all Cats and LNAV Cats C/D. When local altimeter setting not received, use Walla Walla altimeter setting and increase all DA 122 feet and all visibilities 1/4 SM. Increase all MDA 140 feet and LNAV Cat C/D and Circling Cat C visibilities 1/4 SM and Circling Cat D 1/2 SM. For inop ALS, increase LNAV/VNAV all Cats visibility to 3/8 SM. For inop ALS when using Walla Walla altimeter setting, increase LNAV/VNAV all Cats visibility to 1/8 SM.

**ODALS**

**MISSED APPROACH:** Climb to 2100 then climbing left turn 5000 to ZUTED and hold.

ASOS <b>118.325</b>	SPOKANE APP CON * <b>133.15 379.15</b>	PENDLETON TOWER * <b>119.7 (CTAF) 257.8</b>	GND CON <b>121.9 257.8</b>	UNICOM <b>122.95</b>
------------------------	---	--	-------------------------------	-------------------------



ELEV 1497 **D** TDZE 1486

6301 X 150

1601

1559

REIL Rwy 11 and 29

MIRL Rwy 11-29

HIRL Rwy 8-26

CATEGORY	A	B	C	D
LPV DA		1736-3/4	250 (300-3/4)	
LNAV/VNAV DA		1769-3/4	283 (300-3/4)	
LNAV MDA	1860-3/4	374 (400-3/4)	1860-1	374 (400-1)
<b>C</b> CIRCLING	1920-1 423 (500-1)	1960-1 463 (500-1)	1980-1 1/2 483 (500-1 1/2)	2200-2 1/4 703 (800-2 1/4)

NW-1, 22 FEB 2024 to 21 MAR 2024

NW-1, 22 FEB 2024 to 21 MAR 2024

VORTAC PDT <b>114.7</b> Chan <b>94</b>	APP CRS <b>079°</b>	Rwy Idg TDZE <b>1486</b> Apt Elev <b>1497</b>
--	------------------------	---

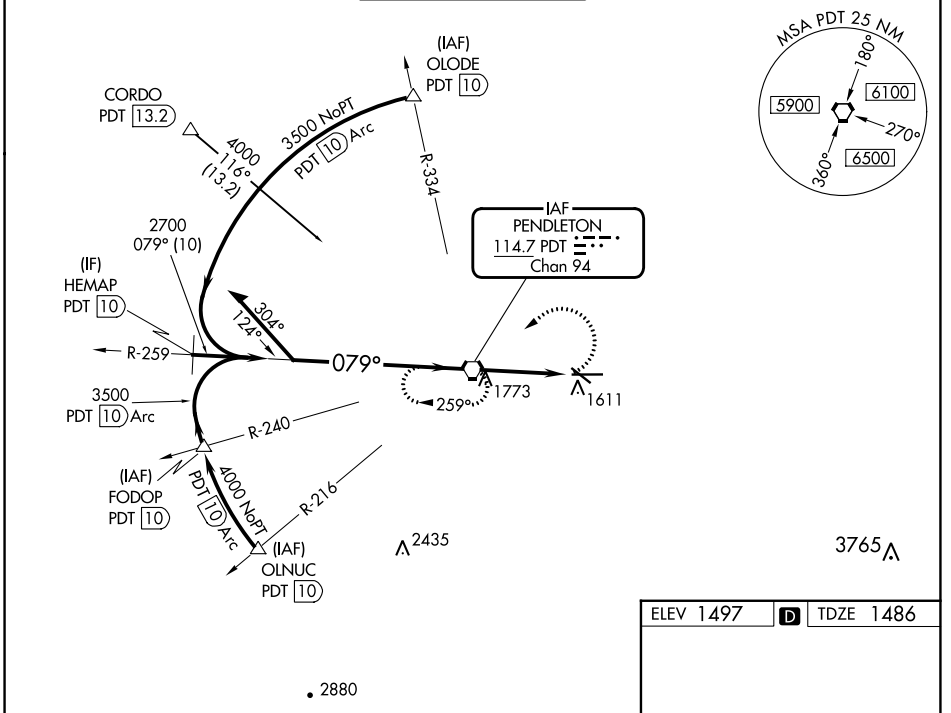
# VOR RWY 8

EASTERN OREGON RGNL AT PENDLETON (PDT)

**⚠** Circling to Rwy 11 NA at night. Rwy 8 helicopter visibility reduction below 3/4 SM NA. VDP NA when using Walla Walla altimeter setting. When local altimeter setting not received, use Walla Walla altimeter setting and increase all MDA 140 feet, increase S-8 Cat C/D visibility to 1 1/8 SM, Circling Cat C visibility 1/4 SM and Cat D visibility 1/2 SM. For inop ALS, increase S-8 Cat C visibility to 1 1/8 SM. For inop ALS when using Walla Walla altimeter setting, increase S-8 Cat C/D visibility to 2 SM.

**ODALS**  
MISSED APPROACH:  
Climbing left turn to 4000 direct PDT VORTAC and hold, continue climb-in-hold to 4000.

ASOS <b>118.325</b>	SPOKANE APP CON * <b>133.15 379.15</b>	PENDLETON TOWER * <b>119.7 (CTAF) 257.8</b>	GND CON <b>121.9 257.8</b>	UNICOM <b>122.95</b>
------------------------	---	--	-------------------------------	-------------------------



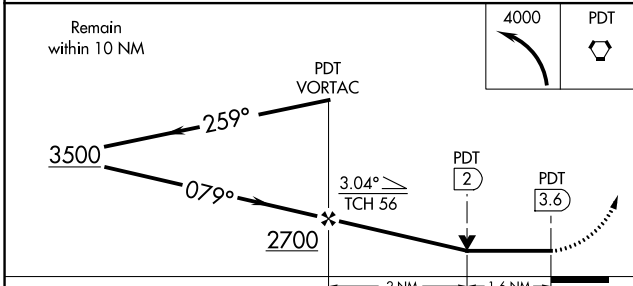
NW-1, 22 FEB 2024 to 21 MAR 2024

NW-1, 22 FEB 2024 to 21 MAR 2024

ELEV 1497	TDZE 1486
-----------	-----------

REIL Rwy 11 and 29  
MIRL Rwy 11-29  
HIRL Rwy 8-26

FAF to MAP 3.6 NM					
Knots	60	90	120	150	180
Min:Sec	3:36	2:24	1:48	1:26	1:12



CATEGORY	A	B	C	D
S-8	2040-3/4	554 (600-3/4)	2040-1 1/2 554 (600-1 1/2)	2040-1 3/4 554 (600-1 3/4)
<b>C</b> CIRCLING	2040-1	543 (600-1)	2040-1 1/8 543 (600-1 1/8)	2200-2 1/4 703 (800-2 1/4)