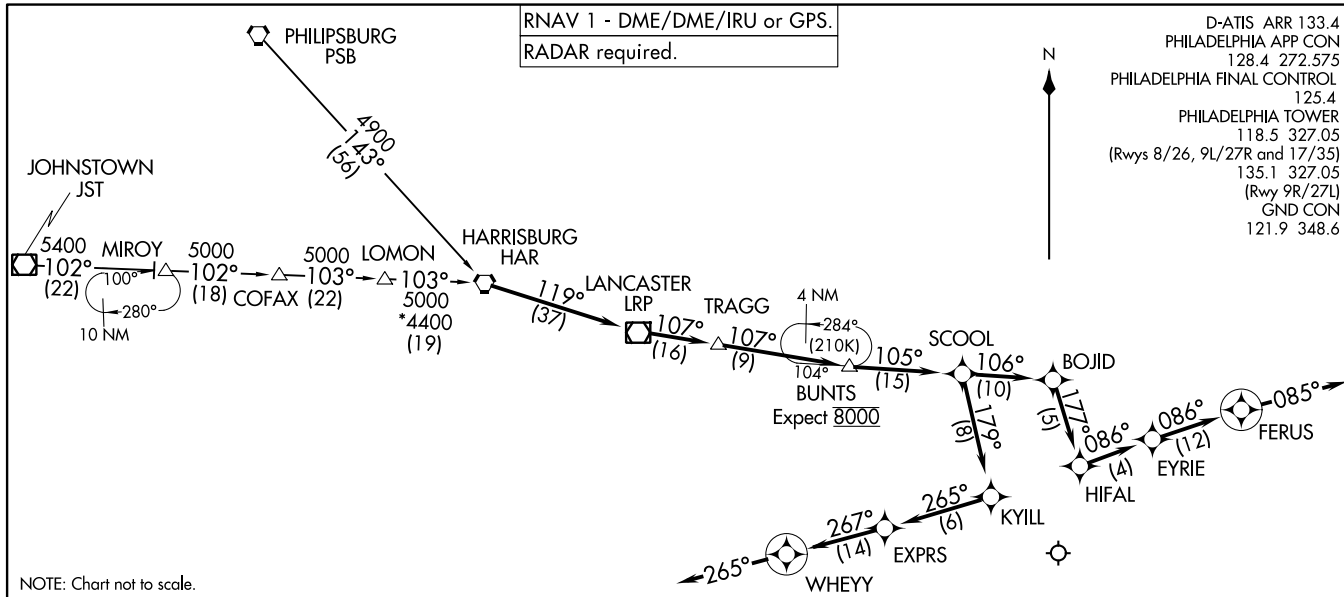


RNAV 1 - DME/DME/IRU or GPS.
RADAR required.

D-ATIS ARR 133.4
PHILADELPHIA APP CON
128.4 272.575
PHILADELPHIA FINAL CONTROL
125.4
PHILADELPHIA TOWER
118.5 327.05
(Rwys 8/26, 9L/27R and 17/35)
135.1 327.05
(Rwy 9R/27L)
GND CON
121.9 348.6



NOTE: Chart not to scale.

ARRIVAL ROUTE DESCRIPTION

JOHNSTOWN TRANSITION (JST.BOJID4):
PHILIPSBURG TRANSITION (PSB.BOJID4):

From HAR VORTAC on track 119° to LRP VOR/DME, then on track 107° to TRAGG, then on track 107° to BUNTS.
LANDING RUNWAYS 9L/R: From BUNTS on track 105° to SCOO, then on track 179° to KYILL, then on track 265° to EXPRS, then on track 267° to WHEYY, then on heading 265°. Expect RADAR vectors to final approach course.
LANDING RUNWAYS 27L/R: From BUNTS on track 105° to SCOO, then on track 106° to BOJID, then on track 177° to HIFAL, then on track 086° to EYRIE, then on track 086° to FERUS, then on heading 085°. Expect RADAR vectors to final approach course.

BOJID FOUR ARRIVAL (RNAV)
(HAR,BOJID4) 05OCT23

PHILADELPHIA, PENNSYLVANIA
PHILADELPHIA INTL (PHI)

(HAR,BOJID4) 23278
BOJID FOUR ARRIVAL (RNAV)

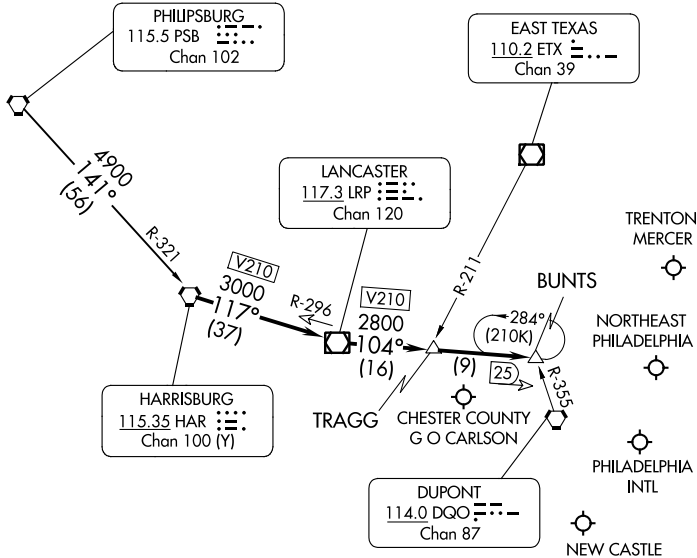
AL-320 (FAA)

PHILADELPHIA INTL (PHI)
PHILADELPHIA, PENNSYLVANIA

BUNTS THREE ARRIVAL

PHILADELPHIA, PENNSYLVANIA

PHILADELPHIA APP CON
128.4 272.575
ILG ATIS 123.95
PHL ARR D-ATIS 133.4
PNE ATIS 121.15
TTN ATIS 126.775



NOTE: Expect to cross BUNTS at 8000.
NOTE: This STAR is for aircraft capable of 250K or greater.

NOTE: Chart not to scale.

ARRIVAL ROUTE DESCRIPTION

PHILIPSBURG TRANSITION (PSB.BUNTS3):

From over HAR VORTAC on HAR R-117 (V210) and LRP R-296 to LRP VOR/DME, thence on LRP R-104 (V210) to BUNTS. Expect RADAR vectors to final approach course.

BUNTS THREE ARRIVAL

(HAR.BUNTS3) 05OCT23

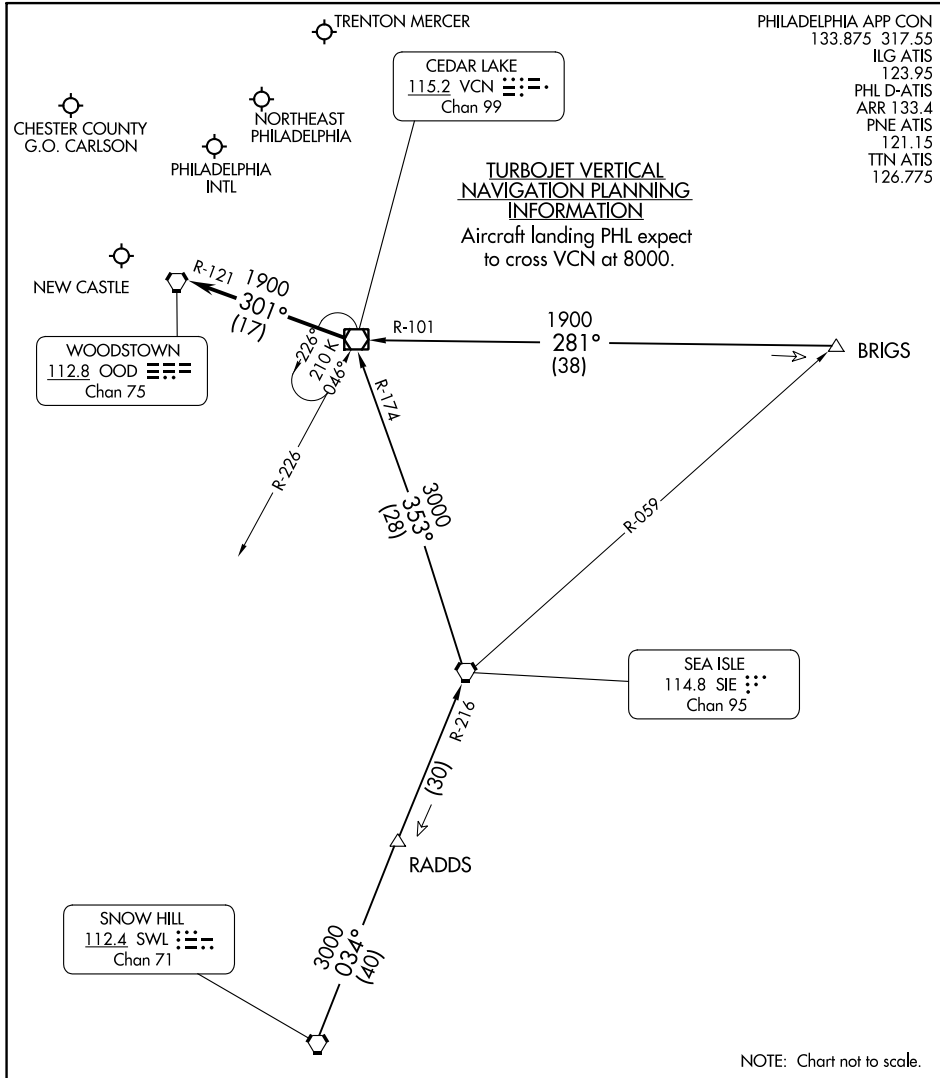
PHILADELPHIA, PENNSYLVANIA

NE-4, 22 FEB 2024 to 21 MAR 2024

NE-4, 22 FEB 2024 to 21 MAR 2024

CEDAR LAKE NINE ARRIVAL

PHILADELPHIA, PENNSYLVANIA



PHILADELPHIA APP CON
 133.875 317.55
 ILG ATIS 123.95
 PHL D-ATIS ARR 133.4
 PNE ATIS 121.15
 TTN ATIS 126.775

TURBOJET VERTICAL NAVIGATION PLANNING INFORMATION
 Aircraft landing PHL expect to cross VCN at 8000.

NE-4, 22 FEB 2024 to 21 MAR 2024

NE-4, 22 FEB 2024 to 21 MAR 2024

BRIGS TRANSITION (BRIGS.VCN9): From over BRIGS on VCN R-101 to VCN VOR/DME. Thence. . . .

SNOW HILL TRANSITION (SWL.VCN9): From over SWL VORTAC on SWL R-034 and SIE R-216 to SIE VORTAC, then on SIE R-353 and VCN R-174 to VCN VOR/DME. Thence. . . .

. . . from over VCN VOR/DME: Turbojets expect RADAR vectors to final approach course. Non-Turbojets continue on the VCN R-301 and the OOD R-121 to OOD VORTAC; expect RADAR vectors to final approach course.

CEDAR LAKE NINE ARRIVAL

PHILADELPHIA, PENNSYLVANIA

JIMS.JIIMS4) 20APR23

JIMS FOUR ARRIVAL (RNAV)

PHILADELPHIA APP CON
133.875 317.55
MQS AWOS-3 126.25
ILG ATIS 123.95
PHI D-ATIS ARR 133.4
PNE ATIS 121.15
TTN ATIS 126.775

RNAV 1 - DME/DME/IRU or GPS

RADAR required

CHESTER COUNTY
G O CARLSON

NOTE: USE CAUTION: Parachute jumping 2.7 NM SE CHPMN, 1.5 NM radius of Cross Keys Airport, AOB 13500 (SR-SS).

NOTE: Jet aircraft only.

ARRIVAL ROUTE DESCRIPTION

BRIGS TRANSITION (BRIGS.JIIMS4):

DASHA TRANSITION (DASHA.JIIMS4):

ZJAAY TRANSITION (ZJAAY.JIIMS4):

Landing PHL Rwy 9L/R: From JIIMS on track 290° to WUDRR, then on track 307° to WEVVE, then on track 268° to ERNYY, then on track 268°. Expect RADAR vectors to final approach course.

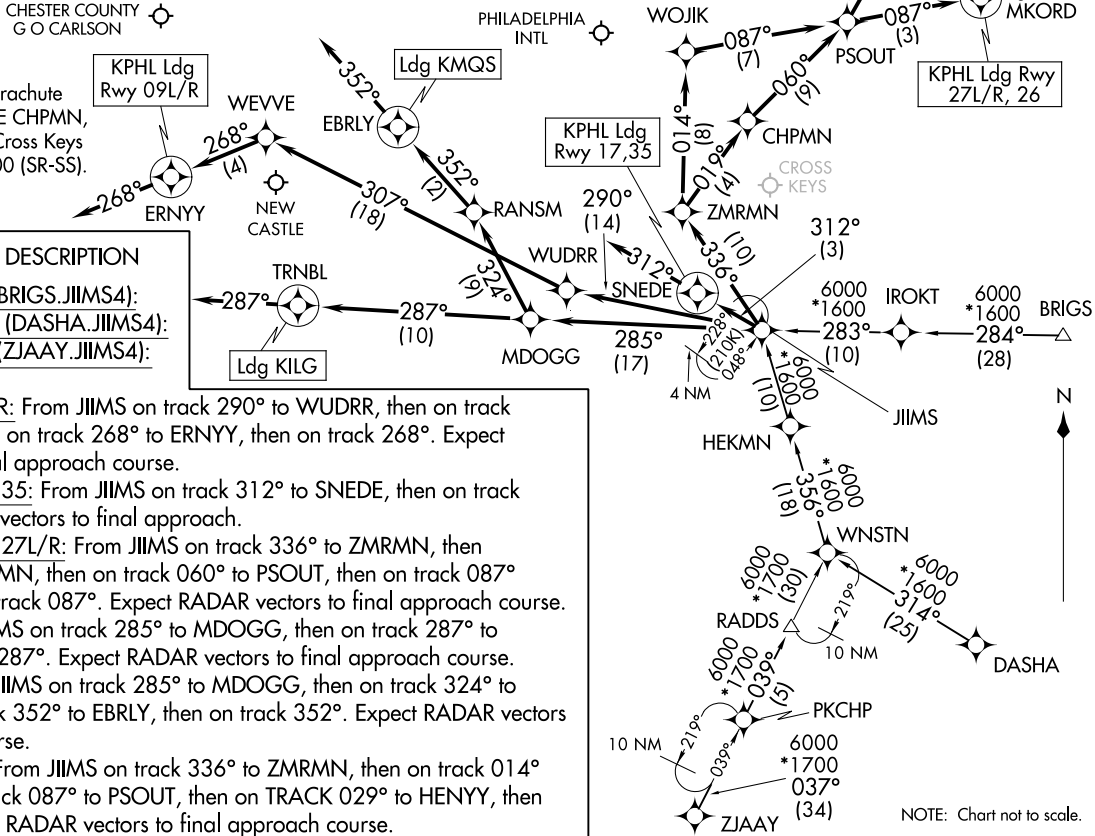
Landing PHL Rwy 17, 35: From JIIMS on track 312° to SNEDE, then on track 312°. Expect RADAR vectors to final approach.

Landing PHL Rwy 26, 27L/R: From JIIMS on track 336° to ZMRMN, then on track 019° to CHPMN, then on track 060° to PSOUT, then on track 087° to MKORD°, then on track 087°. Expect RADAR vectors to final approach course.

Landing ILG: From JIIMS on track 285° to MDOGG, then on track 287° to TRNBL, then on track 287°. Expect RADAR vectors to final approach course.

Landing MQS: From JIIMS on track 285° to MDOGG, then on track 324° to RANSM, then on track 352° to EBRLY, then on track 352°. Expect RADAR vectors to final approach course.

Landing TTN/KPNE: From JIIMS on track 336° to ZMRMN, then on track 014° to WOJIK, then on track 087° to PSOUT, then on TRACK 029° to HENYY, then on track 029°. Expect RADAR vectors to final approach course.



NOTE: Chart not to scale.

PHILADELPHIA, PENNSYLVANIA

JIMS.JIIMS4) 23110

AL-320 (FAA)

PHILADELPHIA, PENNSYLVANIA

PAATS FOUR ARRIVAL (RNAV) Transition Routes

PHILADELPHIA, PENNSYLVANIA

PHILADELPHIA APP CON
133.875 317.55
MQS AWOS-3 126.25
ILG ATIS 123.95
PHL D-ATIS ARR 133.4
PNE ATIS 121.15
TTN ATIS 126.775

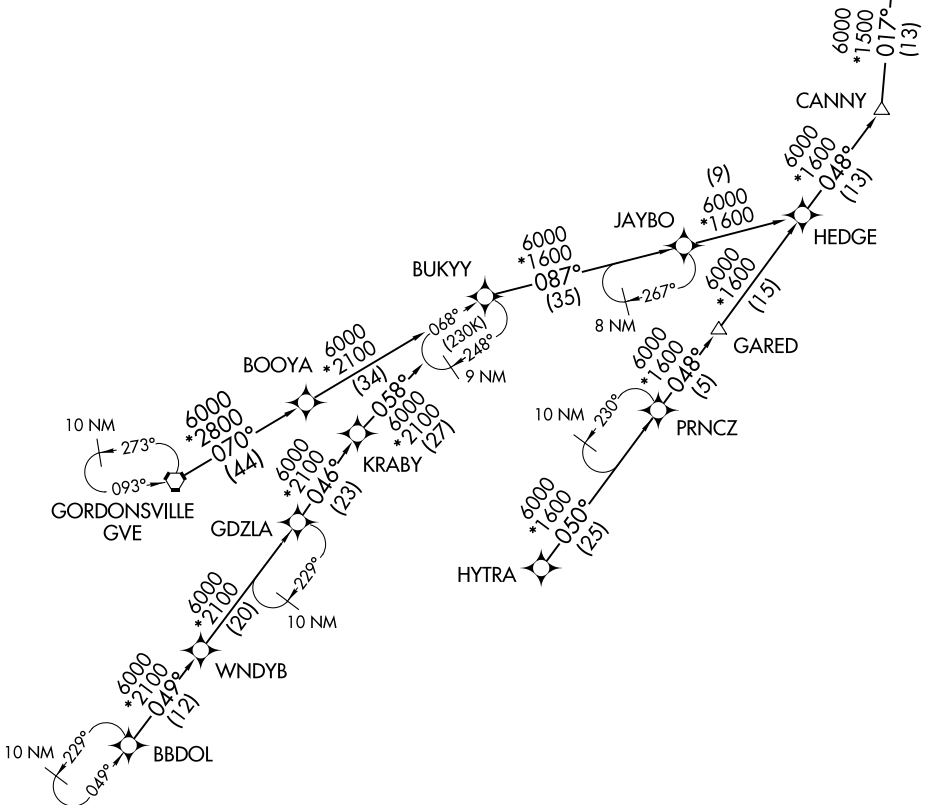
RNAV 1 - DME/DME/IRU or GPS

RADAR required

BBDOL TRANSITION (BBDOL.PAATS4):
GORDONSVILLE TRANSITION (GVE.PAATS4):
HYTRA TRANSITION (HYTRA.PAATS4):

- NOTE: Jet aircraft only.
- NOTE: HYTRA transition do not file - to be assigned by ATC.
- NOTE: CAUTION: Parachute jumping 2.7 NM SE CHPMN, 1.5 NM radius of Cross Keys Airport, AOB 13500 (SR-SS).

See following page for Arrival Routes.



NE-4, 22 FEB 2024 to 21 MAR 2024

NE-4, 22 FEB 2024 to 21 MAR 2024

NOTE: Chart not to scale.

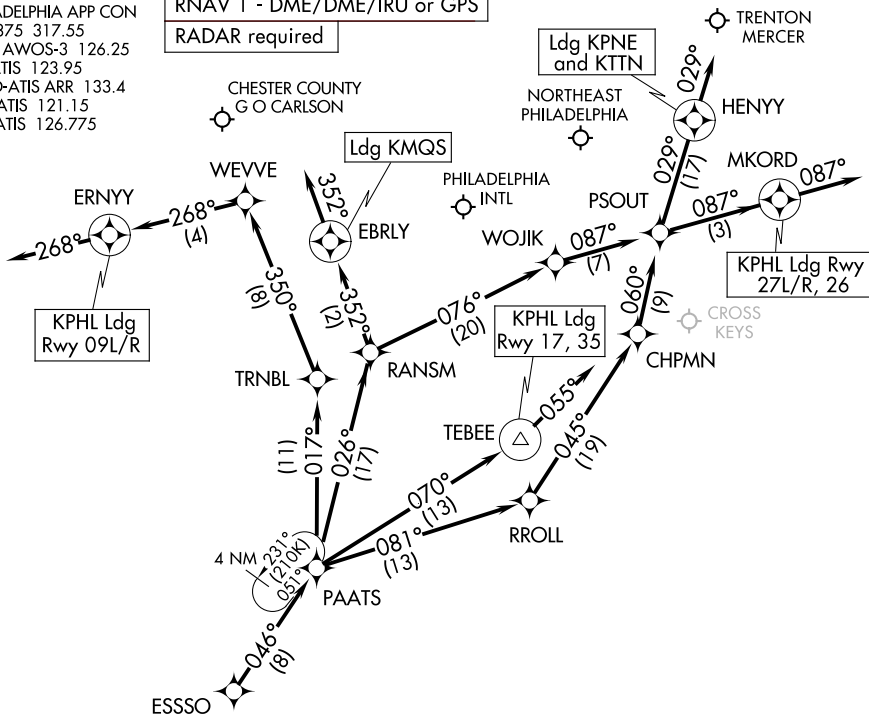
(CONTINUED ON FOLLOWING PAGE)

PAATS FOUR ARRIVAL (RNAV) Arrival Routes

PHILADELPHIA, PENNSYLVANIA

PHILADELPHIA APP CON
 133.875 317.55
 MQS AWOS-3 126.25
 ILG ATIS 123.95
 PHL D-ATIS ARR 133.4
 PNE ATIS 121.15
 TTN ATIS 126.775

RNAV 1 - DME/DME/IRU or GPS
 RADAR required



NOTE: Jet aircraft only.

NOTE: HYTRA transition do not file - to be assigned by ATC.

NOTE: CAUTION: Parachute jumping 2.7 NM SE CHPMN, 1.5 NM radius of Cross Keys Airport, AOB 13500 (SR-SS).

NOTE: Chart not to scale.

ARRIVAL ROUTE DESCRIPTION

KPHL: From ESSSO on track 046° to PAATS.

Landing PHL Rwy 9L/R: From PAATS on track 017° to TRNBL, then on track 350° to WEVVE, then on track 268° to ERNYY, then on track 268°. Expect RADAR vectors to final approach course.

Landing PHL Rwy 17, 35: From PAATS on track 070° to TEBEE, then on track 055°. Expect RADAR vectors to final approach course.

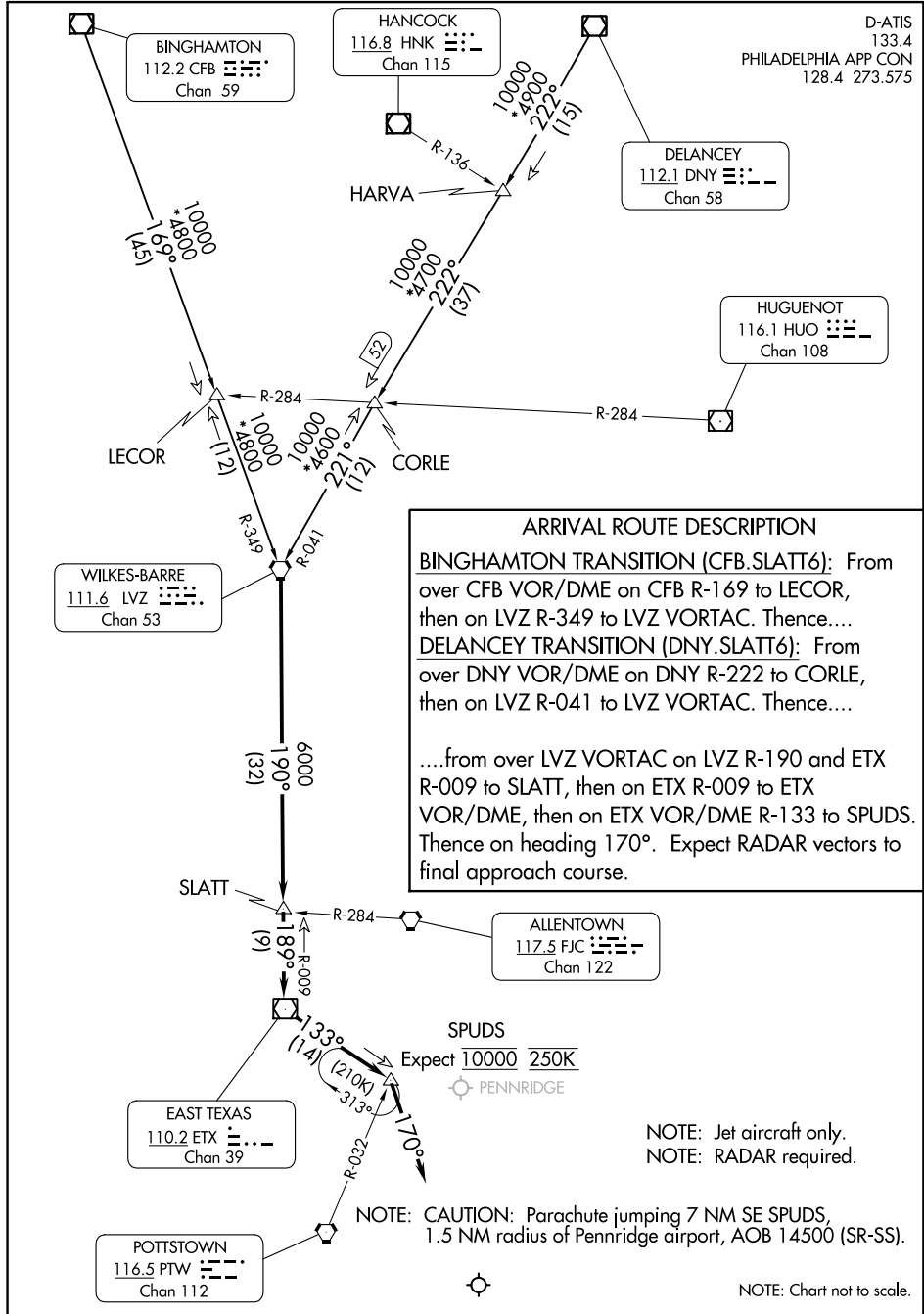
Landing PHL Rwy 26, 27L/R: From PAATS on track 081° to RROLL, then on track 045° to CHPMN, then on track 060° to PSOUT, then on track 087° to MKORD, then on track 087°. Expect RADAR vectors to final approach course.

Landing MQS: From ESSSO on track 046° to PAATS, then on track 026° to RANSM, then on track 352° to EBRLY, then on track 352°. Expect RADAR vectors to final approach course.

Landing TTN/KPNE: From ESSSO on track 046° to PAATS, then on track 026° to RANSM, then on track 076° to WOJIK, then on track 087° to PSOUT, then on track 029° to HENYY, then on track 029°. Expect RADAR vectors to final approach course.

SLATT SIX ARRIVAL

D-ATIS
133.4
PHILADELPHIA APP CON
128.4 273.575



NE-4, 22 FEB 2024 to 21 MAR 2024

NE-4, 22 FEB 2024 to 21 MAR 2024

SLATT SIX ARRIVAL

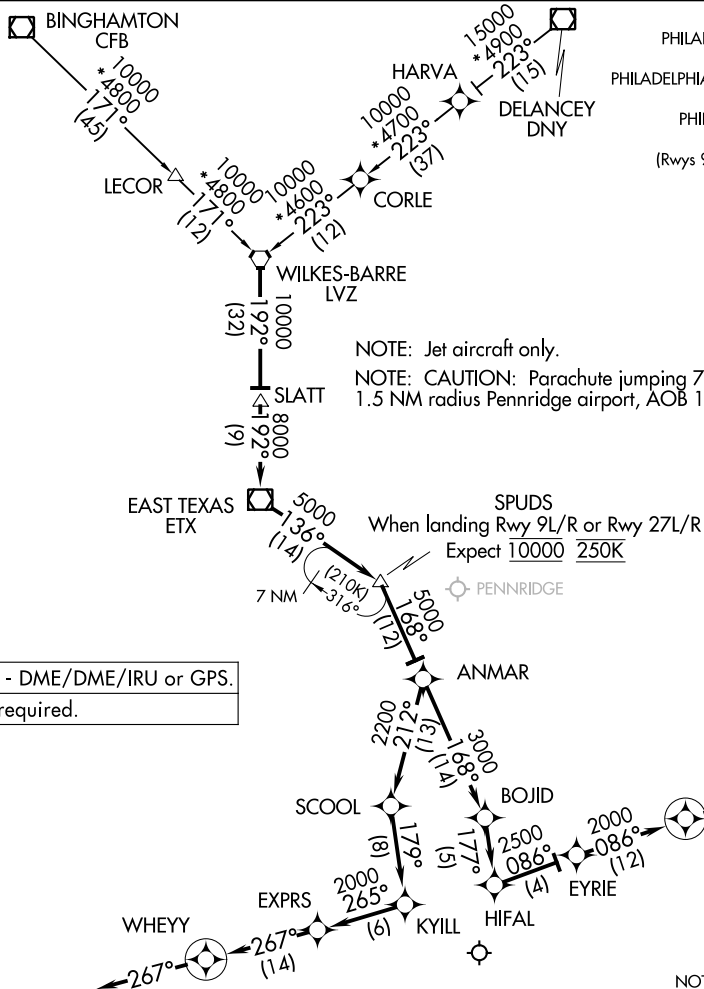
(LVZ.SPUDS7) 23334

AL-320 (FAA)

SPUDS SEVEN ARRIVAL (RNAV)

PHILADELPHIA INTL (PHL)
PHILADELPHIA, PENNSYLVANIA

D-ATIS 133.4
 PHILADELPHIA APP CON 128.4 272.575
 PHILADELPHIA FINAL CONTROL 125.4
 PHILADELPHIA TOWER 118.5 327.05
 (Rwys 9L/27R and 17/35) 135.1 327.05
 (Rwy 9R/27L) GND CON 121.9 348.6



RNAV 1 - DME/DME/IRU or GPS.
 RADAR required.

NOTE: Chart not to scale.

ARRIVAL ROUTE DESCRIPTION

BINGHAMTON TRANSITION (CFB.SPUDS7):

DELANCEY TRANSITION (DNY.SPUDS7):

From LVZ VORTAC on track 192° to SLATT, then on track 192° to ETX VOR/DME, then on track 136° to SPUDS, then on track 168° to ANMAR then...

LANDING RUNWAY 27L/R: Then from ANMAR on track 168° to BOJID. Then on track 177° to HIFAL, then on track 086° to EYRIE. Then on track 086° to FERUS, then on heading 086°. Expect RADAR vectors to final approach course.

LANDING RUNWAY 9L/R: Then from ANMAR on track 212° to SCOO, then on track 179° to KYILL, then on track 265° to EXPRS. Then on track 267° to WHEYY, then on heading 267°. Expect RADAR vectors to final approach course.

SPUDS SEVEN ARRIVAL (RNAV)

(LVZ.SPUDS7) 30NOV23

PHILADELPHIA, PENNSYLVANIA
PHILADELPHIA INTL (PHL)

NE-4, 22 FEB 2024 to 21 MAR 2024

NE-4, 22 FEB 2024 to 21 MAR 2024