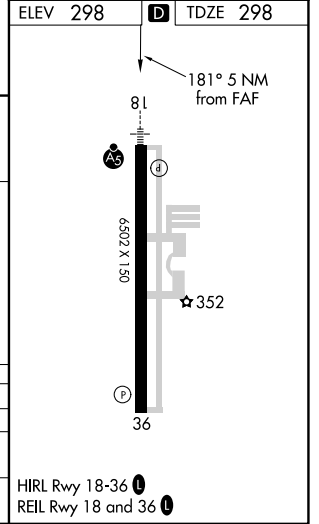
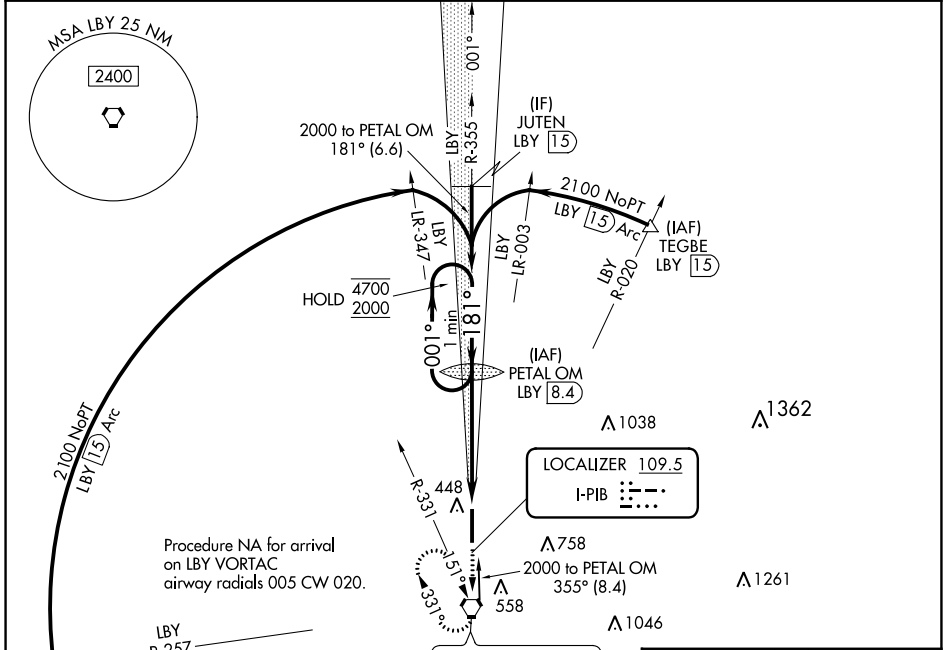


LOC I-PIB 109.5	APP CRS 181°	Rwy Idg TDZE Apt Elev	6502 298 298
---------------------------	------------------------	-----------------------------	---

ILS or LOC RWY 18

HATTIESBURG/LAUREL RGNL (PIB)

DME required.		MALSR	MISSED APPROACH: Climb to 2100 direct LBY VORTAC and hold, continue climb-in-hold to 2100.
AWOS-3PT 128.325	HOUSTON CENTER 126.8 327.8	UNICOM 123.0 (CTAF) ①	



SC-4, 22 FEB 2024 to 21 MAR 2024

SC-4, 22 FEB 2024 to 21 MAR 2024

WAAS CH 49201 W18A	APP CRS 181°	Rwy Idg 6502 TDZE 298 Apt Elev 298
--	------------------------	---

RNAV (GPS) RWY 18
HATTIESBURG/LAUREL RGNL (PIB)

RNP APCH-GPS.

T **A** For uncompensated Baro-VNAV systems, LNAV/VNAV NA below -15°C or above 54°C.

MALSR

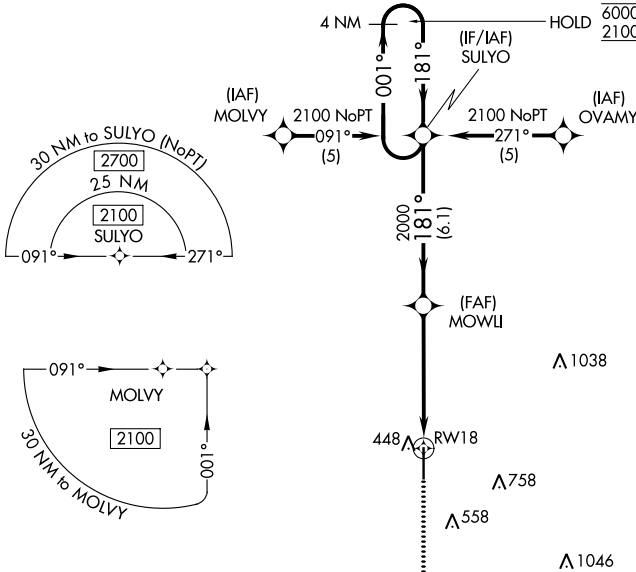


MISSED APPROACH:
Climb to 2000 direct
REWYO and hold.

AWOS-3PT
128.325

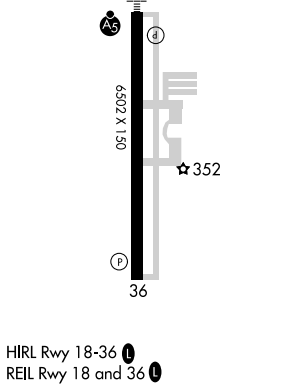
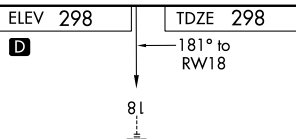
HOUSTON CENTER
126.8 327.8

UNICOM
123.0 (CTAF) 1



SC-4, 22 FEB 2024 to 21 MAR 2024

SC-4, 22 FEB 2024 to 21 MAR 2024



4 NM Holding Pattern 6000 ← 001° 2100 → 181° GP 3.00° TCH 60	SULYO				2000 1.4 NM to RWY 18 RWY 18
	MOWLI		REWYO		
6.1 NM 3.7 NM 1.4 NM				DE SOTO 1 MOA	
CATEGORY	A	B	C	D	
LPV DA	498-1/2 200 (200-1/2)				
LNAV/VNAV DA	691-5/8 393 (400-3/8)				
LNAV MDA	820-1/2 522 (600-1/2)		820-1 522 (600-1)		
C CIRCLING	820-1 522 (600-1)		1120-2 1/2 822 (900-2 1/2)		1120-2 3/4 822 (900-2 3/4)

WAAS CH 93901 W36A	APP CRS 001°	Rwy Idg 6502 TDZE 296 Apt Elev 298
--	------------------------	---

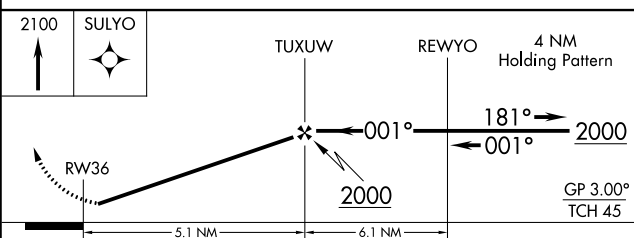
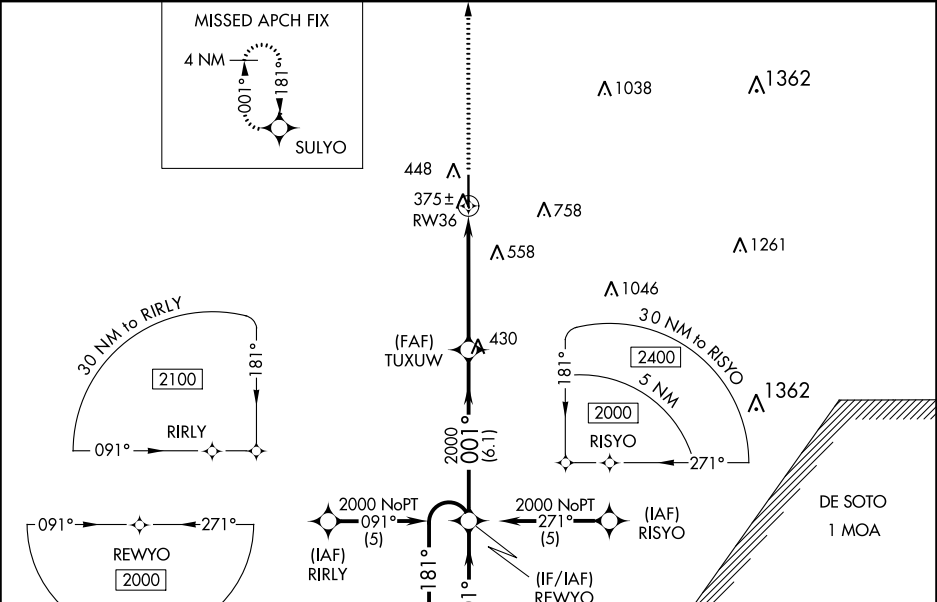
RNAV (GPS) RWY 36

HATTIESBURG/LAUREL RGNL (PIB)

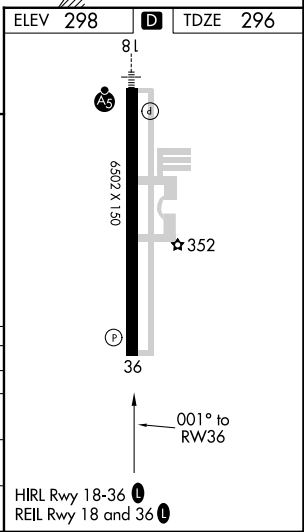
⚠ For uncompensated Baro-VNAV systems, LNAV/VNAV NA below -1.5°C (5°F) or above 48°C (118°F). DME/DME RNP-0.3 NA. Visibility reduction by helicopters NA. When local altimeter setting not received, use Hattiesburg Bobby L Chain Muni altimeter setting: increase LPV DA to 597 feet and LNAV/VNAV DA to 676; increase all MDA 60 feet and visibility LNAV Cat C/D and Circling Cat C/D ¼ SM. Baro-VNAV NA when using Hattiesburg Bobby L Chain Muni altimeter setting.

MISSED APPROACH:
Climb to 2100 direct SULYO and hold.

AWOS-3PT 128.325	HOUSTON CENTER 126.8 327.8	UNICOM 123.0 (CTAF) 0
----------------------------	--------------------------------------	---------------------------------



CATEGORY	A	B	C	D
LPV DA	546-1		250 (300-1)	
LNAV/VNAV DA	625-1¼		329 (400-1¼)	
LNAV MDA	680-1		384 (400-1)	
CIRCLING	760-1		462 (500-1)	
			1120-2½	
			822 (900-2½)	
			680-1¼	
			384 (400-1¼)	
			1120-2¾	
			822 (900-2¾)	



SC-4, 22 FEB 2024 to 21 MAR 2024

SC-4, 22 FEB 2024 to 21 MAR 2024

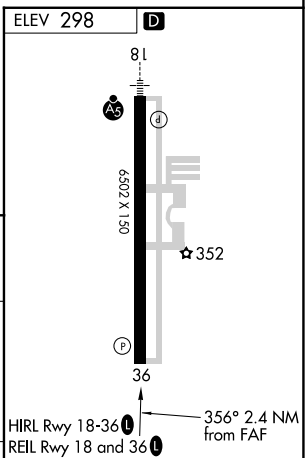
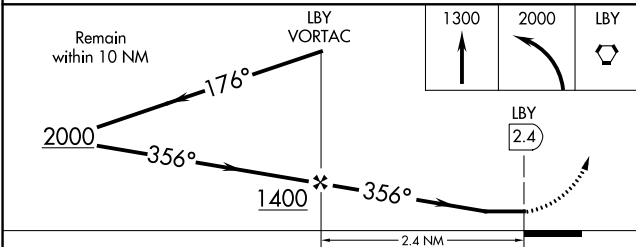
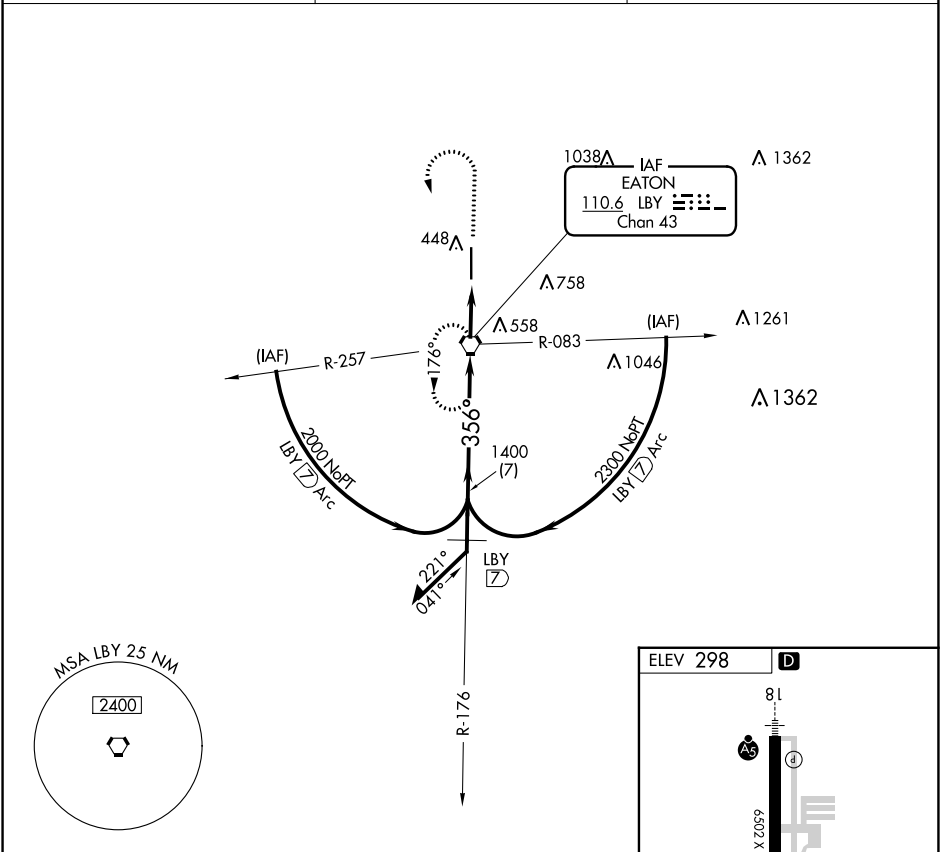
VORTAC LBY 110.6 Chan 43	APP CRS 356°	Rwy Idg TDZE Apt Elev	N/A N/A 298
--	------------------------	-----------------------------	--

VOR-A

HATTIESBURG/LAUREL RGNL (PIB)

▽
▲ MISSED APPROACH: Climb to 1300 then climbing left turn to 2000 direct LBY VORTAC and hold.

AWOS-3PT 128.325	HOUSTON CENTER 126.8 327.8	UNICOM 123.0(CTAF)
----------------------------	--------------------------------------	------------------------------



CATEGORY	A	B	C	D	FAF to MAP 2.4 NM					
CIRCLING	760-1	462 (500-1)	1120-2½ 822 (900-2½)	1120-2¾ 822 (900-2¾)	Knots	60	90	120	150	180
					Min:Sec	2:24	1:36	1:12	0:58	0:48

VOR-A

SC-4, 22 FEB 2024 to 21 MAR 2024

SC-4, 22 FEB 2024 to 21 MAR 2024