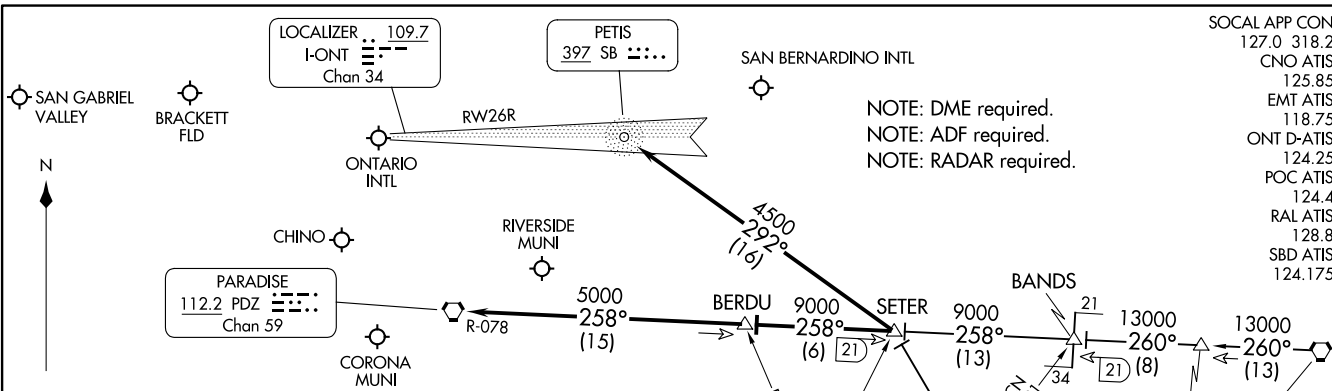


SETER FIVE ARRIVAL
(SETER, SETER5) 17AUG17

SETER FIVE ARRIVAL
(SETER, SETER5) 23278



- SOCAL APP CON
127.0 318.2
CNO ATIS
125.85
EMT ATIS
118.75
ONT D-ATIS
124.25
POC ATIS
124.4
RAL ATIS
128.8
SBD ATIS
124.175

NOTE: DME required.
NOTE: ADF required.
NOTE: RADAR required.

ARRIVAL ROUTE DESCRIPTION

JULIAN TRANSITION (JLI.SETER5): From over JLI VORTAC on JLI R-315 to SETER. Thence. . . .
PALM SPRINGS TRANSITION (PSP.SETER5): From over PSP VORTAC on PSP R-260 to BANDS, then on PDZ R-078 to SETER. Thence. . . .

LANDING ONTARIO INTL
RUNWAYS 26L/R: From over SETER on SB NDB 292° course to SB NDB; expect ILS approach.
RUNWAYS 8L/R: From over SETER on PDZ R-078 to BERDU, then on PDZ R-078 to PDZ VORTAC; expect vectors to final approach course.

ALL OTHER AIRPORTS
 From over SETER via PDZ R-078 to BERDU, then on PDZ R-078 to PDZ VORTAC; expect vectors to final approach course.

HOMELAND
112.05 HDF

OCEANSIDE
115.3 OCN
Chan 100

JULIAN
114.0 JLI
Chan 87

ROTHY
VERTICAL NAVIGATION
PLANNING INFORMATION
Expect 12000

PALM SPRINGS
115.5 PSP
Chan 102
VERTICAL NAVIGATION
PLANNING INFORMATION
Expect 16000

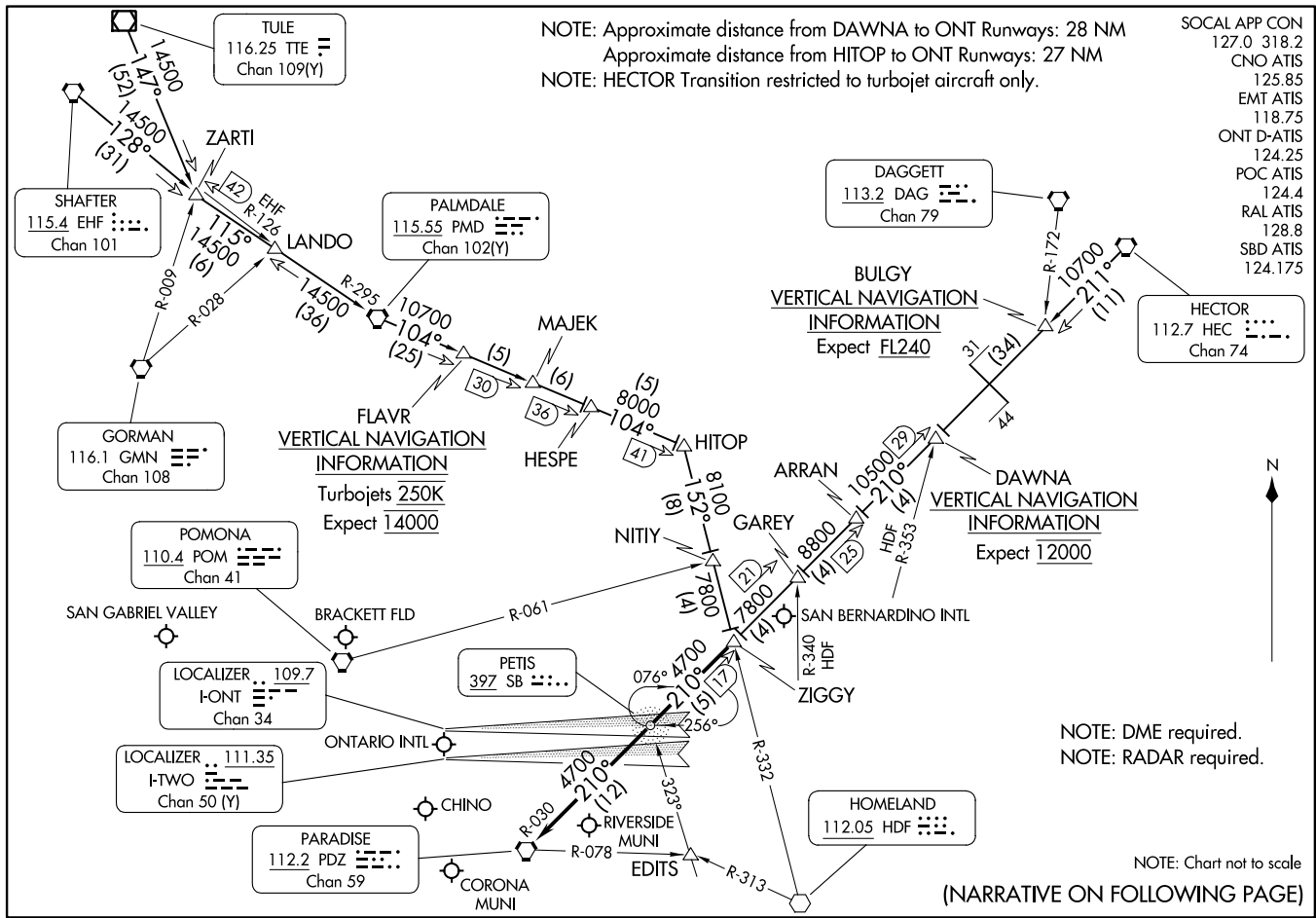
JULIAN
114.0 JLI
Chan 87
VERTICAL NAVIGATION
PLANNING INFORMATION
Expect FL240

NOTE: Chart not to scale.

AL-965 (FAA)

ONTARIO, CALIFORNIA

ONTARIO, CALIFORNIA



SW-3, 22 FEB 2024 to 21 MAR 2024

SW-3, 22 FEB 2024 to 21 MAR 2024

NOTE: Approximate distance from DAWNA to ONT Runways: 28 NM
Approximate distance from HITOP to ONT Runways: 27 NM
NOTE: HECTOR Transition restricted to turbojet aircraft only.

- SOCAL APP CON 127.0 318.2
- CNO ATIS 125.85
- EMT ATIS 118.75
- ONT D-ATIS 124.25
- POC ATIS 124.4
- RAL ATIS 128.8
- SBD ATIS 124.175

DAGGETT
113.2 DAG
Chan 79

HECTOR
112.7 HEC
Chan 74

FLAVR
VERTICAL NAVIGATION
INFORMATION
Turbojets 250K
Expect 14000

DAWNA
VERTICAL NAVIGATION
INFORMATION
Expect 12000

NOTE: DME required.
NOTE: RADAR required.

NOTE: Chart not to scale
(NARRATIVE ON FOLLOWING PAGE)

ARRIVAL ROUTE DESCRIPTION

HECTOR TRANSITION (HEC.ZIGGY7): From over HEC VORTAC on HEC R-211 and PDZ R-030 to ZIGGY. Thence

PALMDALE TRANSITION (PMD.ZIGGY7): From over PMD VORTAC on PMD R-104 to HITOP, then on HDF R-332 to ZIGGY. Thence

SHAFTER TRANSITION (EHF.ZIGGY7): From over EHF VORTAC on EHF R-128 and PMD R-295 to PMD VORTAC, then on PMD R-104 to HITOP, then on HDF R-332 to ZIGGY. Thence

TULE TRANSITION (TTE.ZIGGY7): From over TTE VOR/DME on TTE R-147 and PMD R-295 to PMD VORTAC, then on PMD R-104 to HITOP, then on HDF R-332 to ZIGGY. Thence

LANDING ONTARIO INTL

RUNWAYS 8L/R: From over ZIGGY on PDZ R-030 to PDZ VORTAC; expect RADAR vectors to final approach course.

RUNWAYS 26 L/R: From over ZIGGY direct PETIS NDB or on PDZ R-030 to PETIS; expect RADAR vectors for ILS approach.

ALL OTHER AIRPORTS

From over ZIGGY on PDZ R-030 to PDZ VORTAC; expect RADAR vectors to final approach course.

SW-3, 22 FEB 2024 to 21 MAR 2024

SW-3, 22 FEB 2024 to 21 MAR 2024