

PEASE THREE DEPARTURE

AL-678 (FAA)

PORTSMOUTH INTL AT PEASE (PSM)
PORTSMOUTH, NEW HAMPSHIRE

ATIS
132.05 273.5
CLNC DEL
335.8
GND CON
120.95 275.8
PORTSMOUTH TOWER
128.4 269.0
BOSTON DEP CON
125.05 269.4

LEBANON
113.7 LEB Chan 84
N43°40.73' - W72°12.96'
L-32

KENNEBUNK
117.1 ENE Chan 118
N43°25.54' - W70°36.81'
L-32, H-11-12

CONCORD
112.9 CON Chan 76
N43°13.19' - W71°34.53'
L-32

PEASE
116.5 PSM Chan 112
N43°05.07' - W70°49.92'
L-32-33, H-11-12

CAMBRIDGE
115.0 CAM Chan 97
N42°59.66' - W73°20.64'
L-32-34, H-11-12

MANCHESTER
114.4 MHT Chan 91
N42°52.11' - W71°22.17'
L-32-33, H-11-12

PSM
1.5

GARDNER
110.6 GDM Chan 43
N42°32.76' - W72°03.49'
L-33-34, H-11-12

LAWRENCE
112.5 LWM Chan 72
N42°44.43' - W71°05.69'
L-33

SCUPP
N42°36.18'
W70°13.82' Δ
L-33, H-11-12

BOSTON
112.7 BOS Chan 74
N42°21.45' - W70°59.37'
L-33-34, H-10-11-12

TAKEOFF MINIMUMS:
Rwys 16 and 34: Standard.

NOTE: Rwy 16: DME Required. Turn to heading 220° is predicated on avoiding noise sensitive areas. Initiate turns as soon as practicable upon reaching 500' MSL, but no earlier than PSM 1.5 DME. PSM 1.5 DME intersects runway centerline 190' from departure end.

NOTE: Rwy 34: Cross DER at or above 10' AGL/105' MSL.

Note: Chart not to scale.

DEPARTURE ROUTE DESCRIPTION

TAKEOFF RUNWAY 16: Climb via 165° course, cross PSM 1.5 DME at or above 500', turn right heading 220° or as assigned by ATC for radar vectors to assigned route/navaid/fix, if unable to reach 500' or above by PSM 1.5 DME continue on 165° course, Thence . . .

TAKEOFF RUNWAY 34: Climb runway heading or as assigned by ATC for radar vectors to assigned route/navaid/fix, Thence . . .

. . . . Maintain 3000' or as assigned by ATC. Expect clearance to filed altitude/flight level 5 minutes after departure.

PEASE THREE DEPARTURE

NE-1, 21 MAY 2020 to 18 JUN 2020

NE-1, 21 MAY 2020 to 18 JUN 2020

(TANKR2.TANKR) 20086
TANKER TWO DEPARTURE AL-678 (FAA)

PORTSMOUTH INTL AT PEASE (PSM)
 PORTSMOUTH, NEW HAMPSHIRE

ATIS 132.05 273.5
 CLNC DEL
 335.8
 GND CON
 120.95 275.8
 PORTSMOUTH TOWER
 128.4 269.0
 BOSTON DEP CON
 125.05 269.4

LEBANON
 113.7 LEB
 Chan 84
 N43°40.73' - W72°12.96'
 L-32

KENNEBUNK
 117.1 ENE
 Chan 118
 N43°25.54' - W70°36.81'
 L-32, H-11-12

CONCORD
 112.9 CON
 Chan 76
 N43°13.19' - W71°34.53'
 L-32

CAMBRIDGE
 115.0 CAM
 Chan 97
 N42°59.66' - W73°20.64'
 L-32-34, H-11-12

PEASE
 116.5 PSM
 Chan 112
 N43°05.07' - W70°49.92'
 L-32-33, H-11-12

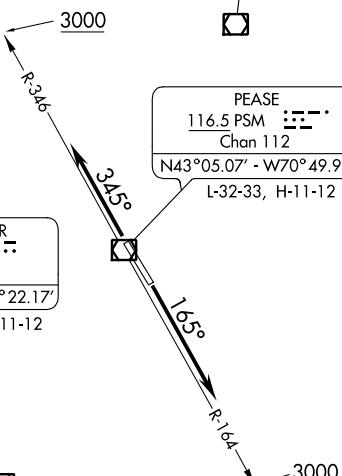
MANCHESTER
 114.4 MHT
 Chan 91
 N42°52.11' - W71°22.17'
 L-32-33, H-11-12

GARDNER
 110.6 GDM
 Chan 43
 N42°32.76' - W72°03.49'
 L-33-34, H-11-12

LAWRENCE
 112.5 LWM
 Chan 72
 N42°44.43' - W71°05.69'
 L-33

SCUDD
 N42°36.18'
 W70°13.82'
 L-33, H-11-12

BOSTON
 112.7 BOS
 Chan 74
 N42°21.45' - W70°59.37'
 L-33-34, H-10-11-12



TAKEOFF MINIMUMS:
 Rwy 16, 34: Standard.

NOTE: RADAR required.

NOTE: Chart not to scale.

DEPARTURE ROUTE DESCRIPTION

TAKEOFF RUNWAY 16: Climb heading 165° to intercept PSM VOR/DME R-164 to 3000 or as assigned by ATC, Thence. . . .

TAKEOFF RUNWAY 34: Climb heading 345° to intercept PSM VOR/DME R-346 to 3000 or as assigned by ATC, Thence. . . .

. . . . Expect radar vectors to assigned route/navaid/fix. Expect further clearance to filed altitude/flight level 5 minutes after departure.

TANKER TWO DEPARTURE
 (TANKR2.TANKR) 27APR17

PORTSMOUTH, NEW HAMPSHIRE
 PORTSMOUTH INTL AT PEASE (PSM)

NE-1, 21 MAY 2020 to 18 JUN 2020

NE-1, 21 MAY 2020 to 18 JUN 2020