

(BUFY3.BUFIY) 22027

ROANOKE/BLACKSBURG RGNL (WOODRUM FLD) (R.O.A)

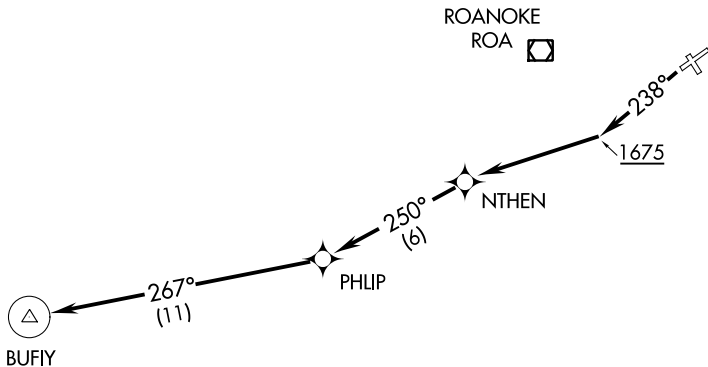
# BUFY THREE DEPARTURE (RNAV)

AL-349 (FAA)

ROANOKE, VIRGINIA

ATIS 132.375  
 CLNC DEL  
 119.7  
 GND CON  
 121.9 257.8  
 ROANOKE DEP CON  
 126.9 339.8  
 ROANOKE TOWER  
 118.3 257.8

**TOP ALTITUDE:  
5000**



NOTE: GPS required.  
 NOTE: RADAR required.  
 NOTE: RNAV 1.

### TAKEOFF MINIMUMS:

Rwy 6, 16, 34: NA-Air Traffic.  
 Rwy 24: Standard with minimum climb  
 of 500' per NM to 1675.

NOTE: Chart not to scale.



### DEPARTURE ROUTE DESCRIPTION

**TAKEOFF RUNWAY 24:** Climb heading 238° to 1675, then direct NTHEN, then on depicted route to BUFY.

Maintain 5000 or assigned altitude by ATC; expect clearance to filed altitude within 10 minutes after departure.

# BUFY THREE DEPARTURE (RNAV)

(BUFY3.BUFIY) 10OCT19

ROANOKE, VIRGINIA

ROANOKE/BLACKSBURG RGNL (WOODRUM FLD) (R.O.A)

NE-3, 22 FEB 2024 to 21 MAR 2024

NE-3, 22 FEB 2024 to 21 MAR 2024

(DIXXY8.DIXXY) 23334

# DIXXY EIGHT DEPARTURE

ROANOKE/BLACKSBURG RGNL (WOODRUM FLD) (R.O.A.)

AL-349 (FAA)

ROANOKE, VIRGINIA

ATIS  
 132.375  
 CLNC DEL  
 119.7  
 GND CON  
 121.9 257.8  
 ROANOKE TOWER  
 118.3 257.8  
 ROANOKE DEP CON  
 126.9 339.8

**TOP ALTITUDE:**  
**4200**

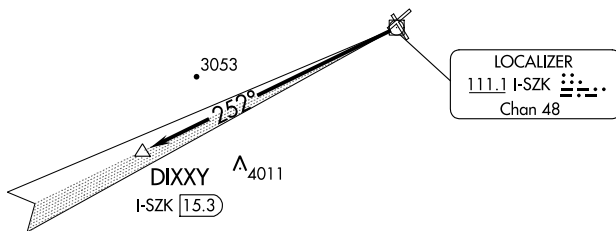
NOTE: RADAR required.

NOTE: DME required.

TAKEOFF MINIMUMS:

Rwys 6, 16, 34: NA - ATC.

Rwy 24: Standard with minimum climb  
of 242' per NM to 2800.



NOTE: Chart not to scale.



## DEPARTURE ROUTE DESCRIPTION

TAKEOFF RUNWAY 24: Climb on I-SZK LDA Localizer west course to 4200 to DIXXY I-SZK 15.3 DME. Expect RADAR vectors to filed/assigned route.

# DIXXY EIGHT DEPARTURE

(DIXXY8.DIXXY) 15AUG19

ROANOKE, VIRGINIA

ROANOKE/BLACKSBURG RGNL (WOODRUM FLD) (R.O.A.)

NE-3, 22 FEB 2024 to 21 MAR 2024

NE-3, 22 FEB 2024 to 21 MAR 2024

(HOKEE3.HOKEE) 23334

ROANOKE/BLACKSBURG RGNL (WOODRUM FLD) (R.O.A.)

# HOKEE THREE DEPARTURE

AL-349 (FAA)

ROANOKE, VIRGINIA

ATIS  
 132.375  
 CLNC DEL  
 119.7  
 GND CON  
 121.9 257.8  
 ROANOKE TOWER  
 118.3 257.8  
 ROANOKE DEP CON  
 126.9 339.8

**TOP ALTITUDE:  
5000**

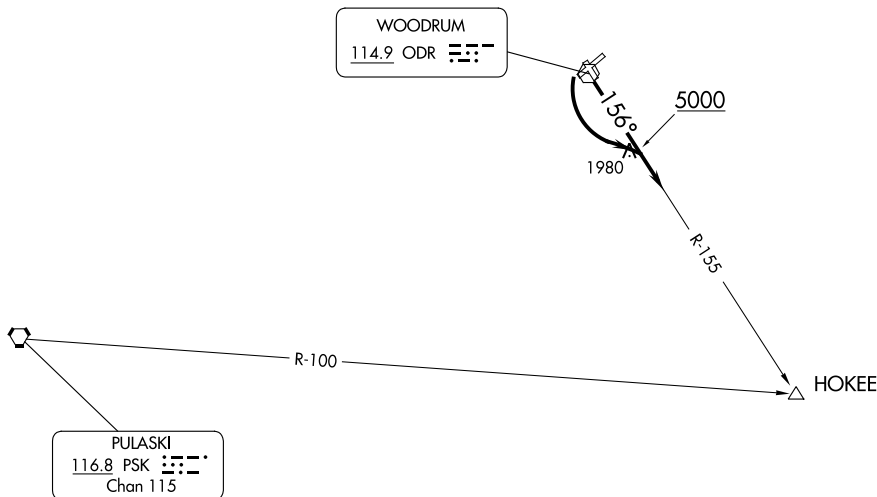
NOTE: RADAR required.

TAKEOFF MINIMUMS:

Rwys 6, 34: NA - Obstacles

Rwy 16: Standard with minimum climb of 260' per NM to 2300

Rwy 24: Standard with minimum climb of 205' per NM to 2800



NOTE: Chart not to scale.



### DEPARTURE ROUTE DESCRIPTION

**TAKEOFF RUNWAY 16:** Climb to 5000 on heading 156° to intercept ODR R-155 to HOKEE INT. Expect RADAR vectors to filed/assigned route.

**TAKEOFF RUNWAY 24:** Climbing left turn to 5000 to intercept ODR R-155 to HOKEE INT. Expect RADAR vectors to filed/assigned route.

# HOKEE THREE DEPARTURE

(HOKEE3.HOKEE) 10DEC15

ROANOKE, VIRGINIA

ROANOKE/BLACKSBURG RGNL (WOODRUM FLD) (R.O.A.)

NE-3, 22 FEB 2024 to 21 MAR 2024

NE-3, 22 FEB 2024 to 21 MAR 2024

(MONAT3.MONAT) 22027

ROANOKE/BLACKSBURG RGNL (WOODRUM FLD) (R.O.A)

# MONAT THREE DEPARTURE (RNAV)

AL-349 (FAA)

ROANOKE, VIRGINIA

ATIS  
 132.375  
 CLNC DEL  
 119.7  
 GND CON  
 121.9 257.8  
 ROANOKE DEP CON  
 126.9 339.8  
 ROANOKE TOWER  
 118.3 257.8

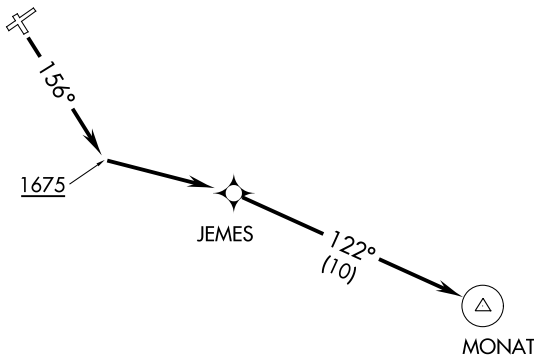
**TOP ALTITUDE:**  
**5000**

### TAKEOFF MINIMUMS:

Rwys 6, 24, 34: NA-Air Traffic.

Rwy 16: Standard with minimum climb of 500' per NM to 1675.

ROANOKE  
ROA



NE-3, 22 FEB 2024 to 21 MAR 2024

NE-3, 22 FEB 2024 to 21 MAR 2024

NOTE: DME/DME/IRU or GPS required.

NOTE: RADAR required.

NOTE: RNAV 1.

NOTE: Chart not to scale.



### DEPARTURE ROUTE DESCRIPTION

TAKEOFF RUNWAY 16: Climb heading 156° to 1675, then direct JEMES, then on track 122° to MONAT.

Maintain 5000 or assigned altitude by ATC, expect clearance to filed altitude within 10 minutes after departure.

MONAT THREE DEPARTURE (RNAV)

ROANOKE, VIRGINIA

(MONAT3.MONAT) 10OCT19

ROANOKE/BLACKSBURG RGNL (WOODRUM FLD) (R.O.A)

(SCUTA3.SCUTA) 22027

ROANOKE/BLACKSBURG RGNL (WOODRUM FLD) (R.O.A.)

SCUTA THREE DEPARTURE (RNAV) AL-349 (FAA)

ROANOKE, VIRGINIA

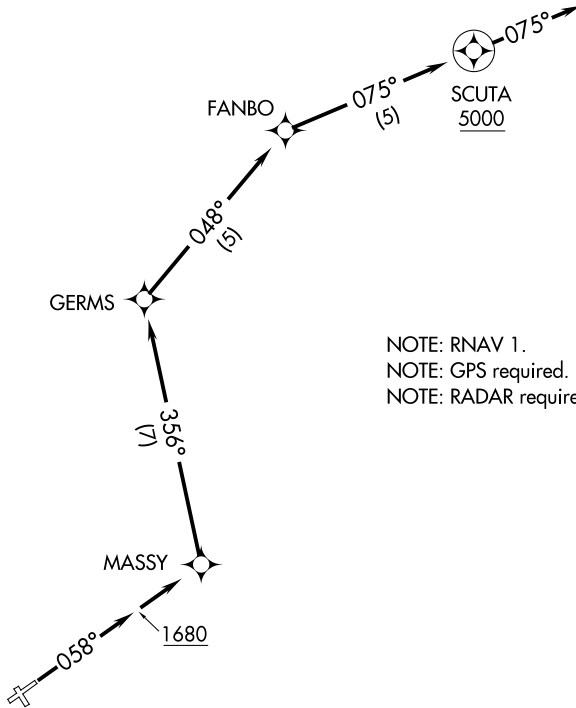
ATIS  
132.375  
CLNC DEL  
119.7  
GND CON  
121.9 257.8  
ROANOKE DEP CON  
126.9 339.8  
ROANOKE TOWER  
118.3 257.8

**TOP ALTITUDE:  
5000**

TAKEOFF MINIMUMS

Rwys 16, 24, 34: NA - Air Traffic.

Rwy 6: Standard with minimum climb  
of 560' per NM to 2900.



NOTE: RNAV 1.  
NOTE: GPS required.  
NOTE: RADAR required.

NOTE: Chart not to scale.



DEPARTURE ROUTE DESCRIPTION

TAKEOFF RUNWAY 6: Climb heading 058° to 1680, then direct MASSY.  
Then on depicted route to cross SCUTA at or above 5000 on heading 075° for  
RADAR vectors. Maintain 5000 or assigned altitude, expect clearance to filed  
altitude 10 minutes after departure.

SCUTA THREE DEPARTURE (RNAV)

ROANOKE, VIRGINIA

(SCUTA3.SCUTA) 10OCT19

ROANOKE/BLACKSBURG RGNL (WOODRUM FLD) (R.O.A.)

NE-3, 22 FEB 2024 to 21 MAR 2024

NE-3, 22 FEB 2024 to 21 MAR 2024