

WAAS CH 82640 W02A	APP CRS 015°	Rwy Idg TDZE 1359 Apt Elev 1359	6011
---------------------------------	------------------------	---	-------------

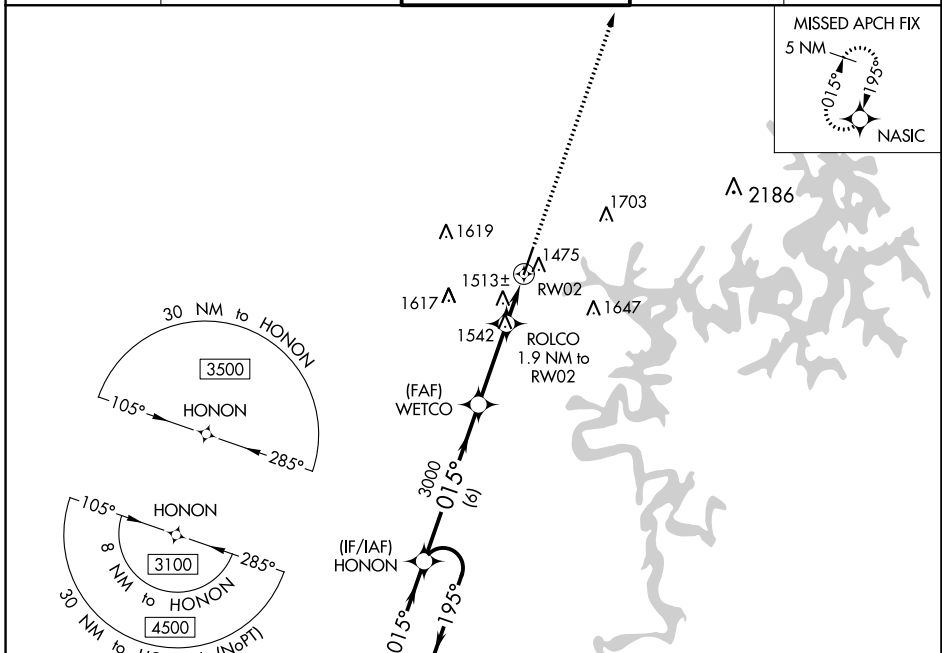
RNAV (GPS) RWY 2

ROGERS EXECUTIVE-CARTER FIELD (ROG)

▼ For uncompensated Baro-VNAV systems, LNAV/VNAV NA below -17°C (2°F) or above 54°C (130°F). Rwy 2 helicopter visibility reduction below ¾ SM NA. DME/DME RNP-0.3 NA.

MISSED APPROACH: Climb to 3200 direct NASIC and hold.

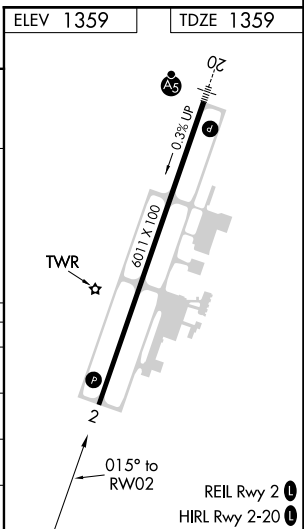
AWOS-3PT 134.375	RAZORBACK APP CON★ 126.6 305.2	ROGERS TOWER★ 119.375 (CTAF) 0	GND CON 118.0	CLNC DEL 121.75
----------------------------	--	--	-------------------------	---------------------------



SC-1, 10 SEP 2020 to 08 OCT 2020

SC-1, 10 SEP 2020 to 08 OCT 2020

5 NM Holding Pattern		HONON		3200 NASIC	
3100 ← 195°		→ 015°		*LNAV only.	
GP 3.00° TCH 58		3000		*1.1 NM to RW02	
6 NM		3.1 NM		0.8 NM	
1.1 NM		0.8 NM		1.1 NM	
CATEGORY	A	B	C	D	
LPV DA		1620-7/8	261 (300-7/8)		
LNAV/VNAV DA		1674-1	315 (400-1)		
LNAV MDA	1780-1	421 (500-1)	1780-1¼	421 (500-1¼)	
C CIRCLING	1820-1	461 (500-1)	2020-1¾	2020-2	661 (700-2)



WAAS CH 40003 W20A	APP CRS 195°	Rwy ldg TDZE 1354 Apt Elev 1359	6011
--	------------------------	---	-------------

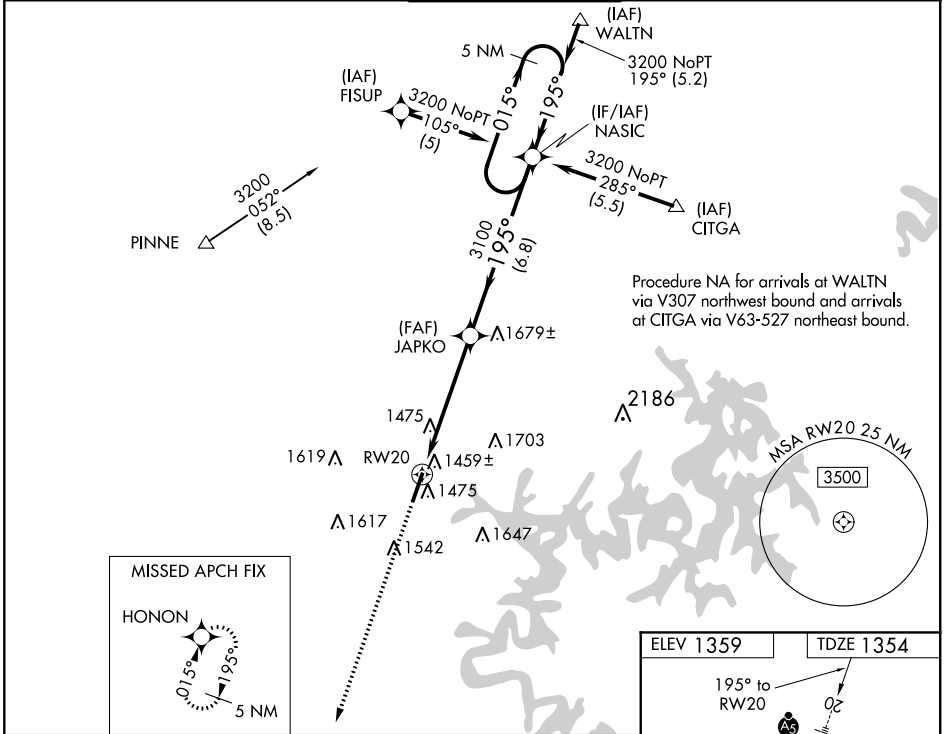
RNAV (GPS) RWY 20

ROGERS EXECUTIVE-CARTER FIELD (ROG)

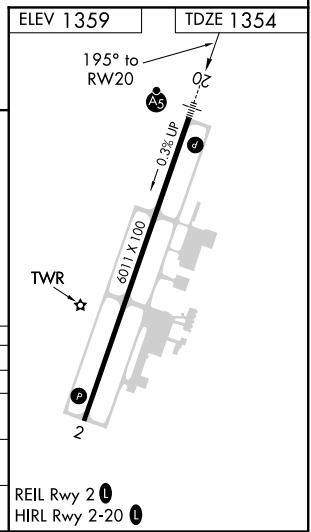
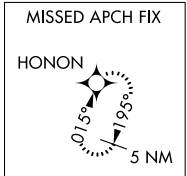
▼ For inop MALS, increase LNAV Cat D to 1½. For uncompensated Baro-VNAV systems, LNAV/VNAV NA below -17°C (2°F) or above 46°C (114°F). DME/DME RNP-0.3 NA. If local altimeter setting not received, use Bentonville Muni altimeter setting and increase all DAs 22 feet and all MDAs 40 feet. Baro-VNAV and VDP NA when using Bentonville Muni altimeter setting.

MALS **MISSED APPROACH:** Climb to 3100 direct HONON and hold.

AWOS-3PT 134.375	RAZORBACK APP CON* 126.6 305.2	ROGERS TOWER* 119.375 (CTAF) 0	GND CON 118.0	CLNC DEL 121.75
----------------------------	--	--	-------------------------	---------------------------



Procedure NA for arrivals at WALTN via V307 northwest bound and arrivals at CITGA via V63-527 northeast bound.



3100	HONON	VGSI and descent angles not coincident (VGSI angle 3.00/TCH 55).		5 NM Holding Pattern
*LNAV only	*1.1 NM to RW20	JAPKO	NASIC	015° → 3200
				← 195° ← 3100
				GP 3.00° TCH 58
CATEGORY	A	B	C	D
LPV DA	1604-½		250 (300-½)	
LNAV/VNAV DA	1730-¾		376 (400-¾)	
LNAV MDA	1740-½		386 (400-½)	
	1740-1		386 (400-1)	
CIRCLING	1820-1	461 (500-1)	2020-1¾	2020-2
	661 (700-1¾)		661 (700-2)	

SC-1, 10 SEP 2020 to 08 OCT 2020

SC-1, 10 SEP 2020 to 08 OCT 2020