

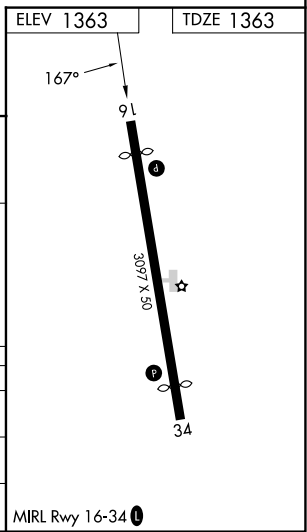
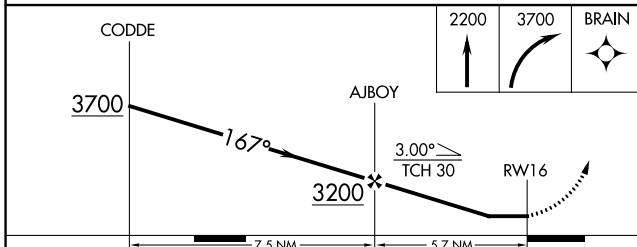
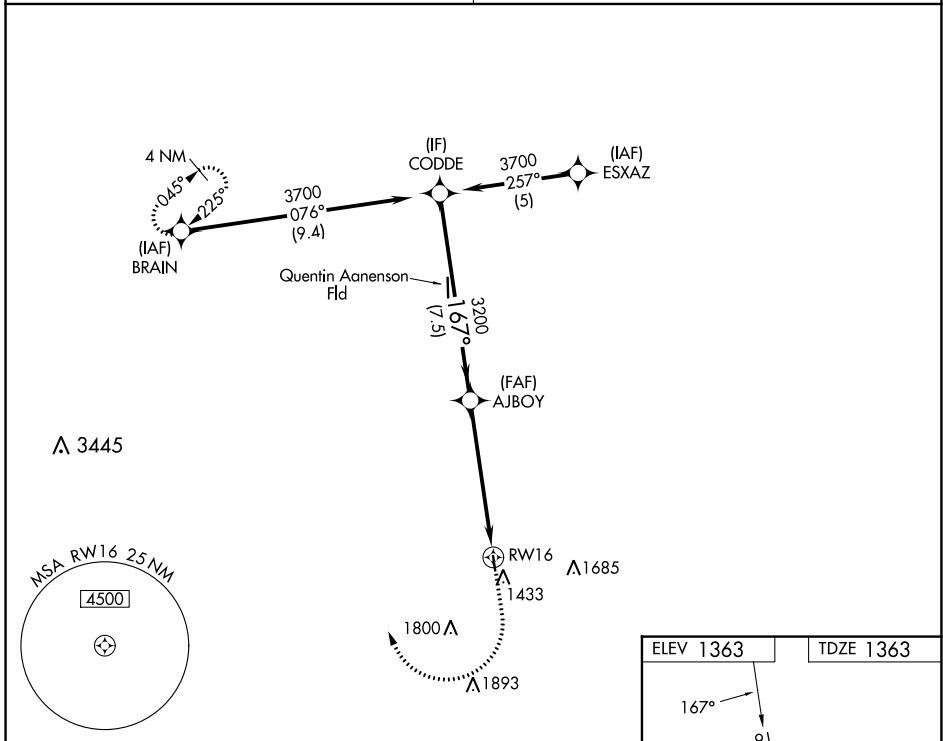
|                         |                        |                             |   |
|-------------------------|------------------------|-----------------------------|---|
| WAAS<br>CH <b>82742</b> | APP CRS<br><b>167°</b> | Rwy Idg<br>TDZE<br>Apt Elev | <b>2797</b><br><b>1363</b><br><b>1363</b> |
| <b>W16A</b>             |                        |                             |   |

# RNAV (GPS) RWY 16

ROCK RAPIDS MUNI (R.R.Q)

|  |  |
|--|--|
| RNP APCH-GPS.  | MISSED APPROACH: Climb to 2200 then climbing right turn to 3700 direct BRAIN and hold. |
| <p>Procedure NA at night. Rwy 16 helicopter visibility reduction below 1 SM NA. Use Sioux Falls altimeter setting.</p> |  |

|   |  |
|---|--|
| <p>SIoux FALLS APP CON*</p> <p><b>126.9 284.725</b></p> | <p>UNICOM</p> <p><b>122.8 (CTAF) 0</b></p> |
|---|--|



|          |                       |                       |   |    |
|----------|-----------------------|-----------------------|---|----|
| CATEGORY | A                     | B                     | C | D  |
| LP MDA   | 1960-1                | 597 (600-1)           |   | NA |
| LNAV MDA | 1980-1                | 617 (700-1)           |   | NA |
| CIRCLING | 1980-1<br>617 (700-1) | 2040-1<br>677 (700-1) |   | NA |

NC-3, 22 FEB 2024 to 21 MAR 2024

NC-3, 22 FEB 2024 to 21 MAR 2024

|  |                        |                             |   |
|--|------------------------|-----------------------------|---|
| WAAS<br>CH <b>40044</b><br><b>W34A</b> | APP CRS<br><b>347°</b> | Rwy Idg<br>TDZE<br>Apt Elev | <b>2797</b><br><b>1363</b><br><b>1363</b> |
|--|------------------------|-----------------------------|---|

# RNAV (GPS) RWY 34

ROCK RAPIDS MUNI (R.R.Q)

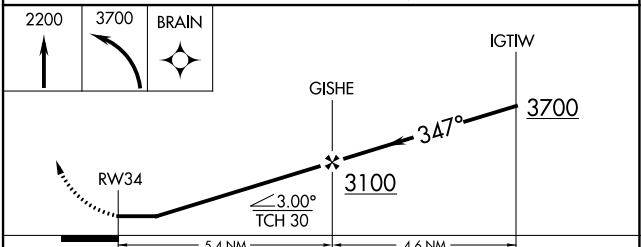
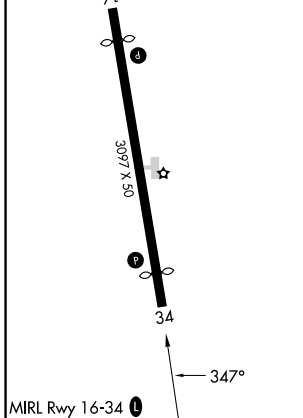
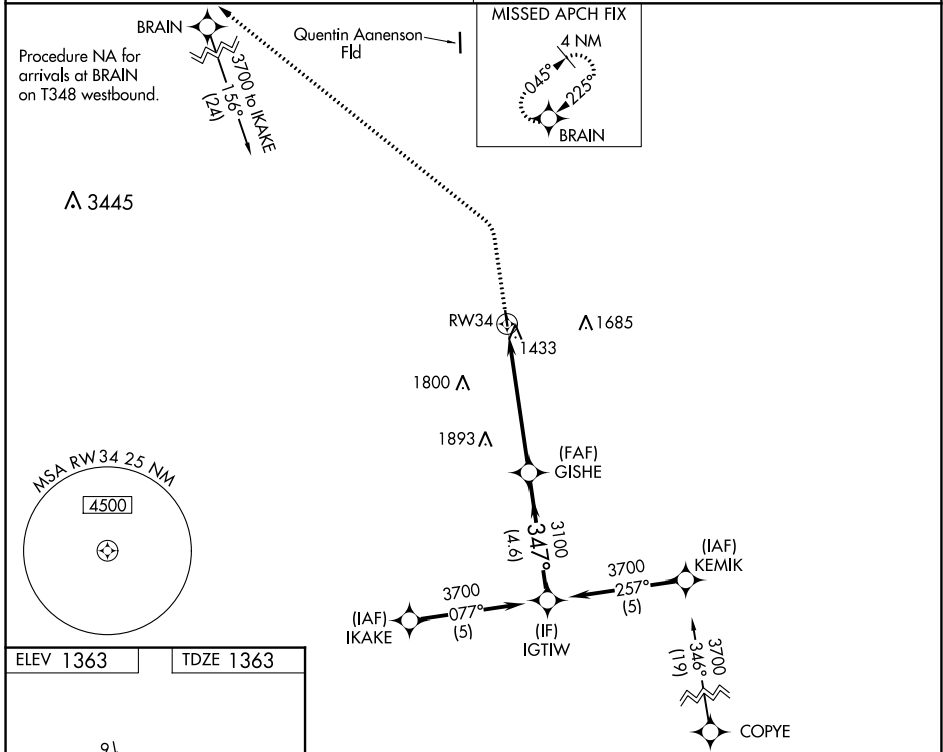
RNP APCH - GPS.

**NA** Procedure NA at night. Rwy 34 helicopter visibility reduction below 1 SM NA. Use Sioux Falls, SD altimeter setting.

MISSED APPROACH: Climb to 2200 then climbing left turn to 3700 direct BRAIN and hold.

**SIOUX FALLS APP CON \***  
**126.9 284.725**

**UNICOM**  
**122.8(CTAF) 0**



|                   |        |                       |   |    |
|-------------------|--------|-----------------------|---|----|
| CATEGORY          | A      | B                     | C | D  |
| LP MDA            | 1960-1 | 597 (600-1)           |   | NA |
| LNAV MDA          | 1960-1 | 597 (600-1)           |   | NA |
| <b>C</b> CIRCLING | 1960-1 | 2040-1<br>677 (700-1) |   | NA |

NC-3, 22 FEB 2024 to 21 MAR 2024

NC-3, 22 FEB 2024 to 21 MAR 2024