

BORDER SEVEN DEPARTURE
(BRDR7 .BROWS) 20AUG15

SAN DIEGO, CALIFORNIA
SAN DIEGO INTL (SAN)

DEPARTURE ROUTE DESCRIPTION

TAKEOFF RUNWAY 9: Climb on heading 093° to intercept MZB VORTAC R-096 to BROWS INT. Thence. . . .

TAKEOFF RUNWAY 27: Climb on heading 278° until PGY 19 DME, then left turn on heading 123° to intercept PGY VORTAC R-260 and R-069 to BROWS INT. Thence. . . .

. . . . (transition) or (assigned route). Maintain assigned altitude. Expect filed altitude/flight level 10 minutes after departure.

IMPERIAL TRANSITION (BRDR7.IPL): From over BROWS INT on PGY R-069 and IPL R-250 to IPL VORTAC.

JULIAN TRANSITION (BRDR7.JLI): From over BROWS INT on JLI R-182 to JLI VORTAC.

**TOP ALTITUDE:
ASSIGNED BY ATC**

SOCAL DEP CON
EAST 124.35 279.625
WEST 119.6 363.1
D-ATIS
134.8
CLNC DEL
125.9
CPDLC
GND CON
123.9
LINDBERGH TOWER
118.3 338.225

JULIAN
114.0 JLI :---
Chan 87

TAKEOFF MINIMUMS

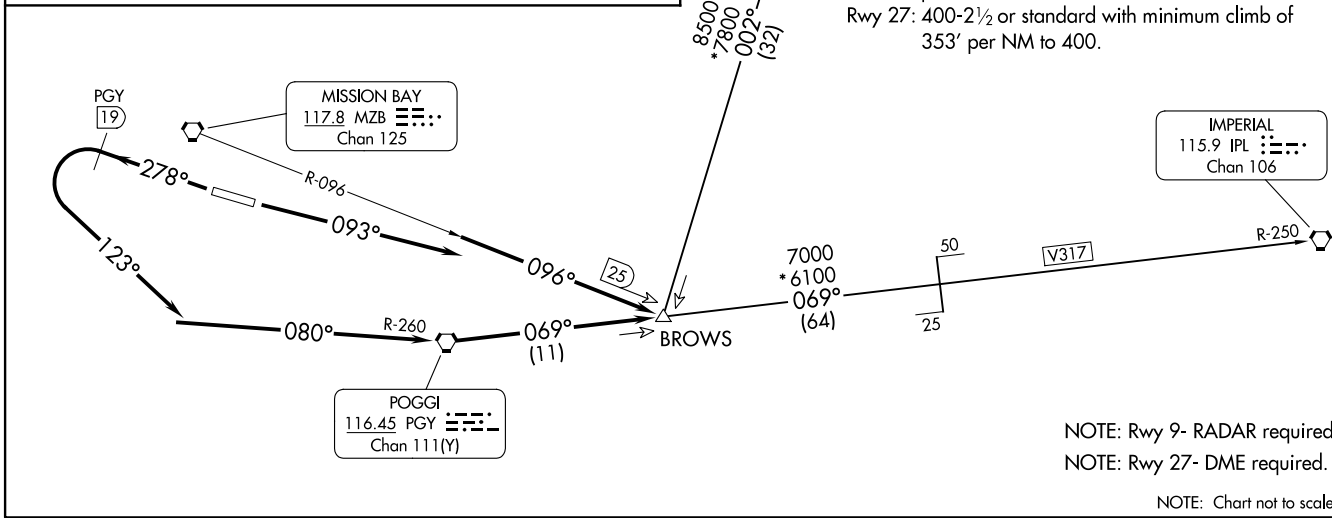
Rwy 9: 400-1 with minimum climb of 610' per NM to 1900 or standard with minimum climb of 686' per NM to 1900.

Rwy 27: 400-2½ or standard with minimum climb of 353' per NM to 400.

(BRDR7 .BROWS) 23334
BORDER SEVEN DEPARTURE

AL-373 (FAA)

SAN DIEGO INTL (SAN)
SAN DIEGO, CALIFORNIA



NOTE: Rwy 9- RADAR required.

NOTE: Rwy 27- DME required.

NOTE: Chart not to scale.

(CWARD2.CWARD) 18004

CWARD TWO DEPARTURE (RNAV)

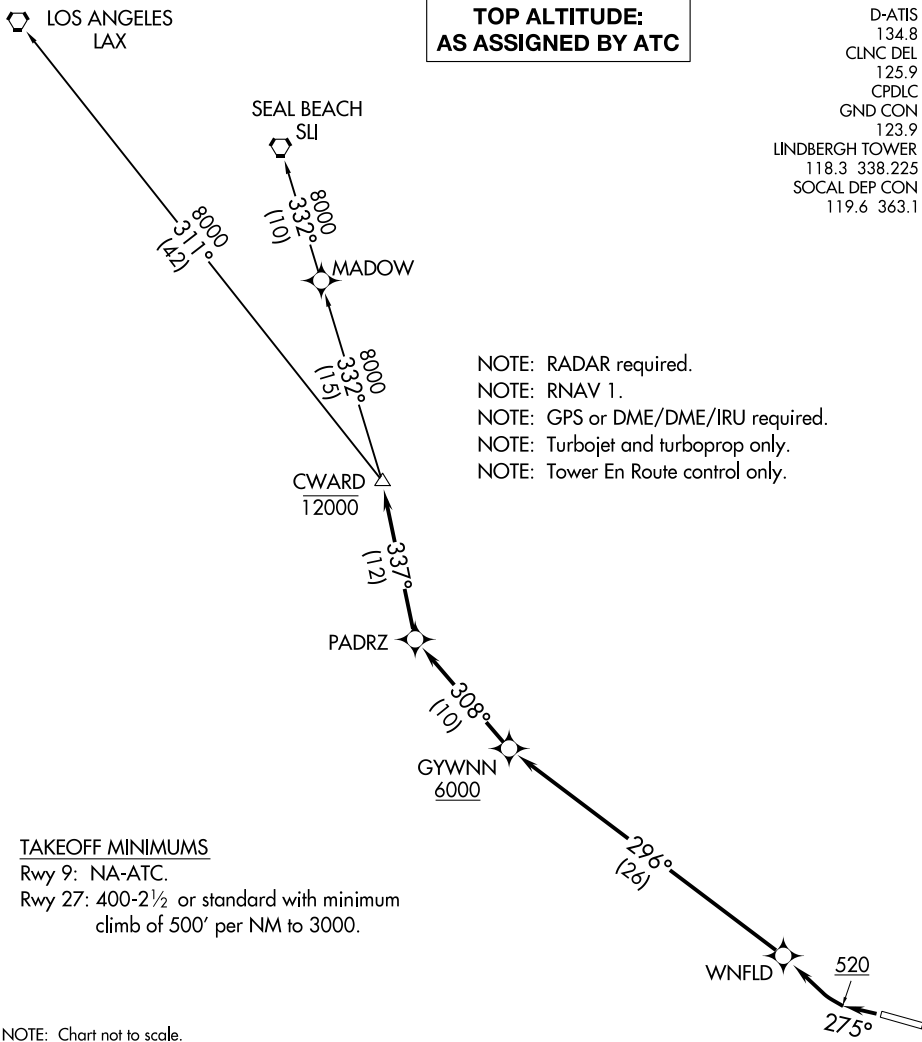
AL-373 (FAA)

SAN DIEGO INTL (SAN)
SAN DIEGO, CALIFORNIA

**TOP ALTITUDE:
AS ASSIGNED BY ATC**

D-ATIS 134.8
 CLNC DEL 125.9
 CPDLC
 GND CON 123.9
 LINDBERGH TOWER 118.3 338.225
 SOCAL DEP CON 119.6 363.1

NOTE: RADAR required.
 NOTE: RNAV 1.
 NOTE: GPS or DME/DME/IRU required.
 NOTE: Turbojet and turboprop only.
 NOTE: Tower En Route control only.



TAKEOFF MINIMUMS

Rwy 9: NA-ATC.

Rwy 27: 400-2½ or standard with minimum climb of 500' per NM to 3000.

NOTE: Chart not to scale.



DEPARTURE ROUTE DESCRIPTION

TAKEOFF RUNWAY 27: Climb heading 275° to 520, then right turn direct WNFLD, then on track 296° to cross GYWNN at or above 6000, then on track 308° to PADRZ, then on track 337° to cross CWARD at or below 12000, thence. . . .

. . . .on transition. Maintain ATC assigned altitude. Expect filed altitude 10 minutes after departure.

LOS ANGELES TRANSITION (CWARD2.LAX)

SEAL BEACH TRANSITION (CWARD2.SLI)

CWARD TWO DEPARTURE (RNAV)

(CWARD2.CWARD) 07DEC17

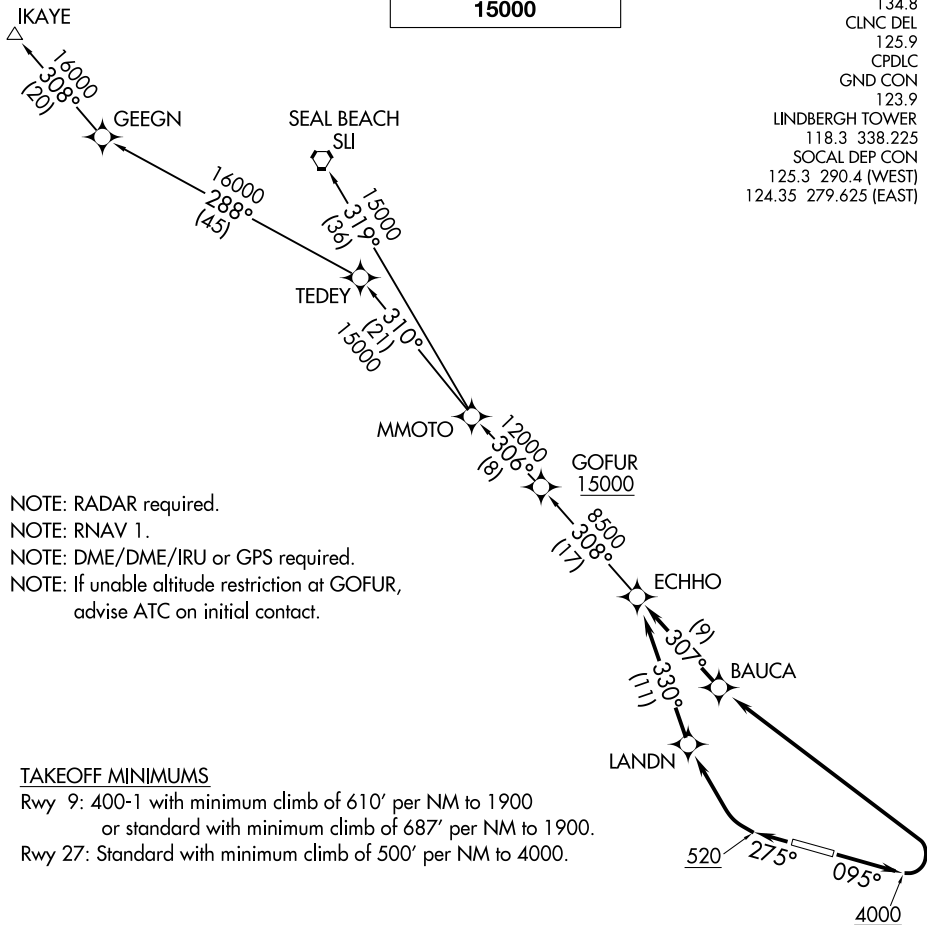
SAN DIEGO, CALIFORNIA
SAN DIEGO INTL (SAN)

SW-3, 22 FEB 2024 to 21 MAR 2024

SW-3, 22 FEB 2024 to 21 MAR 2024

**TOP ALTITUDE:
15000**

D-ATIS
134.8
CLNC DEL
125.9
CPDLC
GND CON
123.9
LINDBERGH TOWER
118.3 338.225
SOCAL DEP CON
125.3 290.4 (WEST)
124.35 279.625 (EAST)



NOTE: RADAR required.
NOTE: RNAV 1.
NOTE: DME/DME/IRU or GPS required.
NOTE: If unable altitude restriction at GOFUR,
advise ATC on initial contact.

TAKEOFF MINIMUMS

Rwy 9: 400-1 with minimum climb of 610' per NM to 1900
or standard with minimum climb of 687' per NM to 1900.
Rwy 27: Standard with minimum climb of 500' per NM to 4000.

NOTE: Chart not to scale.

DEPARTURE ROUTE DESCRIPTION

TAKEOFF RUNWAY 9: Climb heading 095° to 4000, then left turn direct BAUCA, then on track 307° to ECHHO, thence. . . .

TAKEOFF RUNWAY 27: Climb heading 275° to 520, then right turn direct LANDN, then on track 330° to ECHHO, thence. . . .

. . . .on (transition), maintain 15000. Expect filed altitude 10 minutes after departure.

IKAYE TRANSITION (ECHHO2.IKAYE)

SEAL BEACH TRANSITION (ECHHO2.SU)

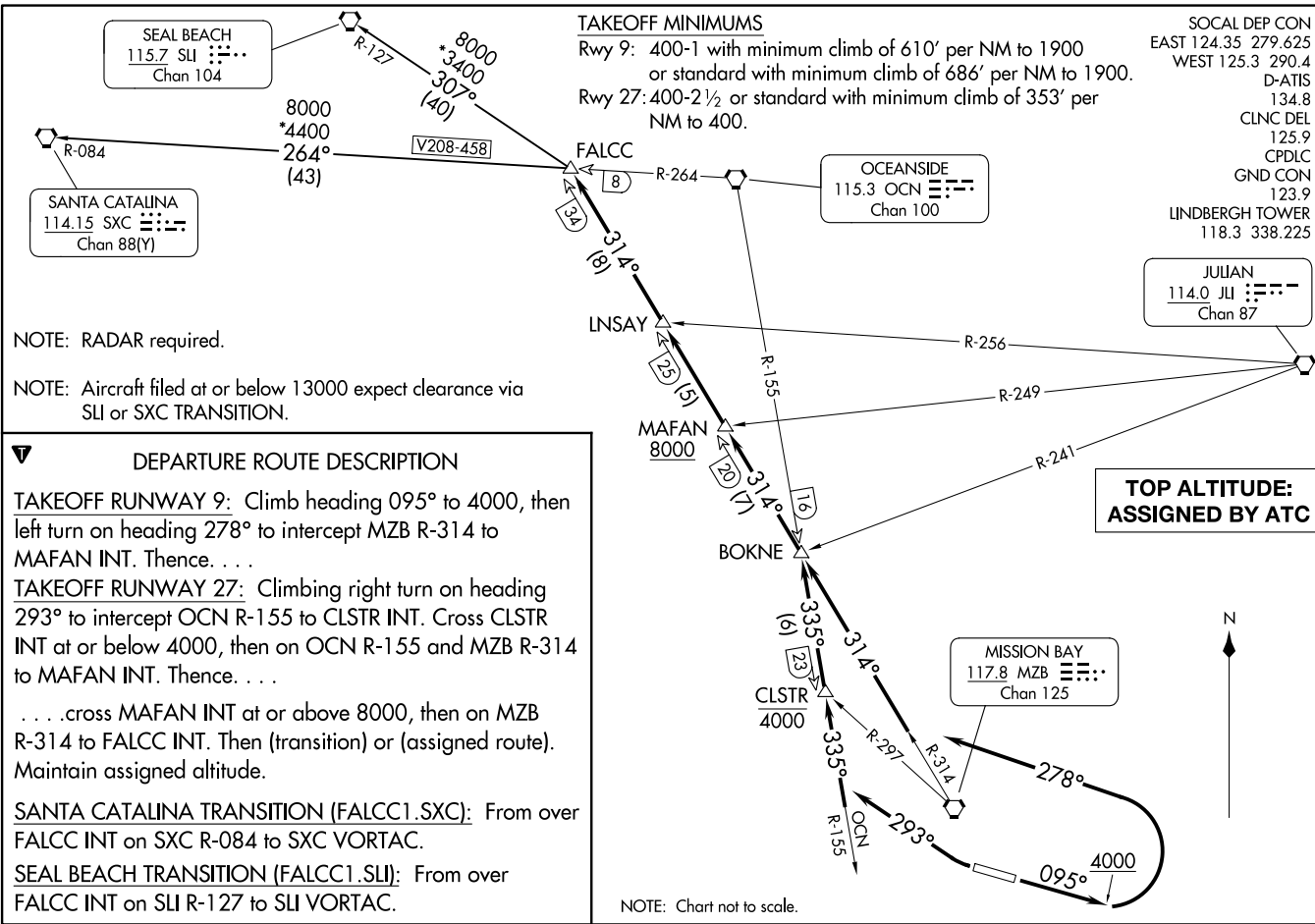
FALCC ONE DEPARTURE
(FALCC1.FALCC) 10NOV16

FALCC ONE DEPARTURE
(FALCC1.FALCC) 23334

SOCAL DEP CON
EAST 124.35 279.625
WEST 125.3 290.4
D-ATIS
134.8
CLNC DEL
125.9
CPDLC
GND CON
123.9
LINDBERGH TOWER
118.3 338.225

AL-373 (FAA)

SAN DIEGO INTL (SAN)
SAN DIEGO, CALIFORNIA



TAKEOFF MINIMUMS

Rwy 9: 400-1 with minimum climb of 610' per NM to 1900
or standard with minimum climb of 686' per NM to 1900.
Rwy 27: 400-2½ or standard with minimum climb of 353' per
NM to 400.

SEAL BEACH
115.7 SLI
Chan 104

SANTA CATALINA
114.15 SXC
Chan 88(Y)

OCEANSIDE
115.3 OCN
Chan 100

JULIAN
114.0 JLI
Chan 87

MISSION BAY
117.8 MZB
Chan 125

**TOP ALTITUDE:
ASSIGNED BY ATC**



NOTE: Chart not to scale.

NOTE: RADAR required.

NOTE: Aircraft filed at or below 13000 expect clearance via
SLI or SXC TRANSITION.

DEPARTURE ROUTE DESCRIPTION

TAKEOFF RUNWAY 9: Climb heading 095° to 4000, then
left turn on heading 278° to intercept MZB R-314 to
MAFAN INT. Thence. . .

TAKEOFF RUNWAY 27: Climbing right turn on heading
293° to intercept OCN R-155 to CLSTR INT. Cross CLSTR
INT at or below 4000, then on OCN R-155 and MZB R-314
to MAFAN INT. Thence. . .

. . .cross MAFAN INT at or above 8000, then on MZB
R-314 to FALCC INT. Then (transition) or (assigned route).
Maintain assigned altitude.

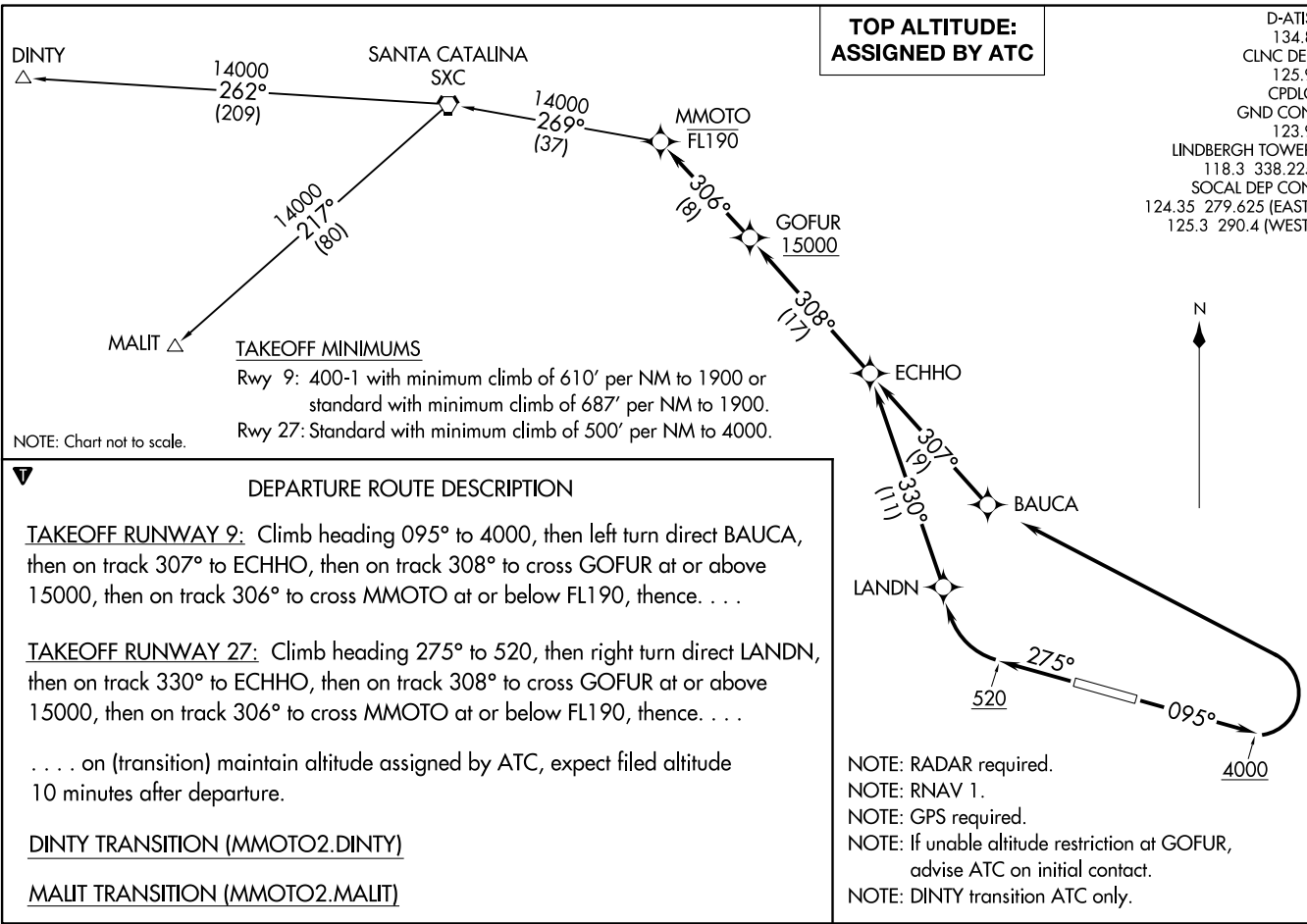
SANTA CATALINA TRANSITION (FALCC1.SXC): From over
FALCC INT on SXC R-084 to SXC VORTAC.

SEAL BEACH TRANSITION (FALCC1.SLI): From over
FALCC INT on SLI R-127 to SLI VORTAC.

SAN DIEGO, CALIFORNIA
SAN DIEGO INTL (SAN)

MMOTO TWO DEPARTURE (RNAV)
(MMOTO2.MMOTO) 120CT17

SAN DIEGO, CALIFORNIA
SAN DIEGO INTL (SAN)



D-ATIS 134.8
CLNC DEL 125.9
CPDLC
GND CON 123.9
LINDBERGH TOWER 118.3 338.225
SOCAL DEP CON 124.35 279.625 (EAST)
125.3 290.4 (WEST)

(MMOTO2.MMOTO) 17285
MMOTO TWO DEPARTURE (RNAV)

AL-373 (FAA)

SAN DIEGO INTL (SAN)
SAN DIEGO, CALIFORNIA

(PADRZ2.PADRZ) 17341

PADRZ TWO DEPARTURE (RNAV)

AL-373 (FAA)

SAN DIEGO INTL (SAN)
SAN DIEGO, CALIFORNIA

D-ATIS
134.8
CLNC DEL
125.9
CPDLC
GND CON
123.9
LINDBERGH TOWER
118.3 338.225
SOCAL DEP CON
119.6 363.1



DEPARTURE ROUTE DESCRIPTION

TAKEOFF RUNWAY 27: Climb heading 275° to 520, then right turn direct WNFLD, then on track 296° to KERNL, then on track 296° to cross GYWNN at or above 8000, then on track 308° to PADRZ, thence. . . .

. . . .on (transition). Maintain 15000. Expect higher altitude 10 minutes after departure.

CHKNN TRANSITION (PADRZ2.CHKNN)

DINTY TRANSITION (PADRZ2.DINTY)

IKAYE TRANSITION (PADRZ2.IKAYE)

MALIT TRANSITION (PADRZ2.MALIT)

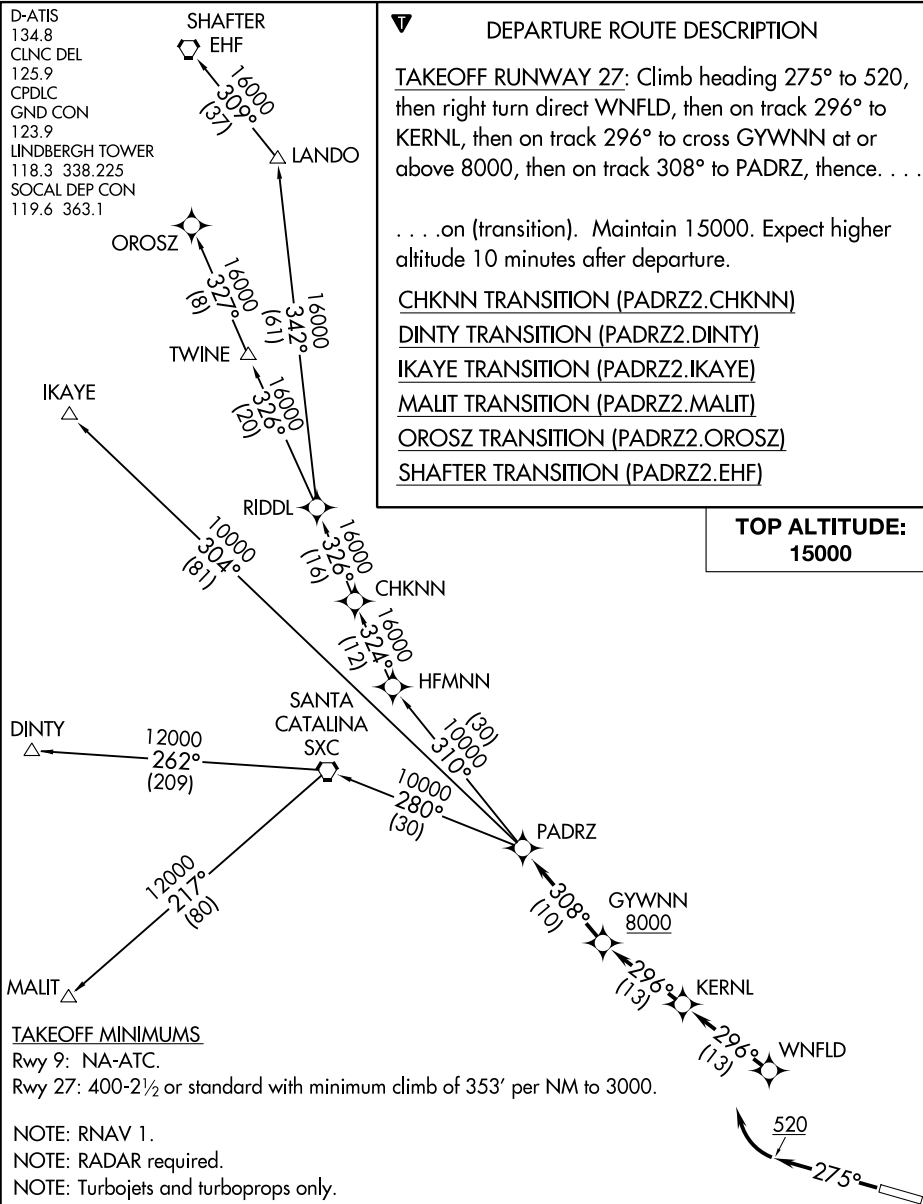
OROSZ TRANSITION (PADRZ2.OROSZ)

SHAFTER TRANSITION (PADRZ2.EHF)

**TOP ALTITUDE:
15000**

SW-3, 22 FEB 2024 to 21 MAR 2024

SW-3, 22 FEB 2024 to 21 MAR 2024



TAKEOFF MINIMUMS

Rwy 9: NA-ATC.

Rwy 27: 400-2½ or standard with minimum climb of 353' per NM to 3000.

NOTE: RNAV 1.

NOTE: RADAR required.

NOTE: Turbojets and turboprops only.

NOTE: CHKNN, SHAFTER, IKAYE, OROSZ TRANSITIONS: DME/DME/IRU or GPS required.

NOTE: DINTY, MALIT TRANSITIONS: GPS only.

NOTE: For non-GPS equipped aircraft, Oceanside (OCN) must be operational.

NOTE: DINTY TRANSITION ATC assigned only.

NOTE: DINTY and MALIT TRANSITIONS NA from SEE, SDM and RNM airports.

NOTE: Chart not to scale.

PADRZ TWO DEPARTURE (RNAV)

(PADRZ2.PADRZ) 07DEC17

SAN DIEGO, CALIFORNIA
SAN DIEGO INTL (SAN)

(PEBLE6.PEBLE) 23334

PEBLE SIX DEPARTURE

AL-373 (FAA)

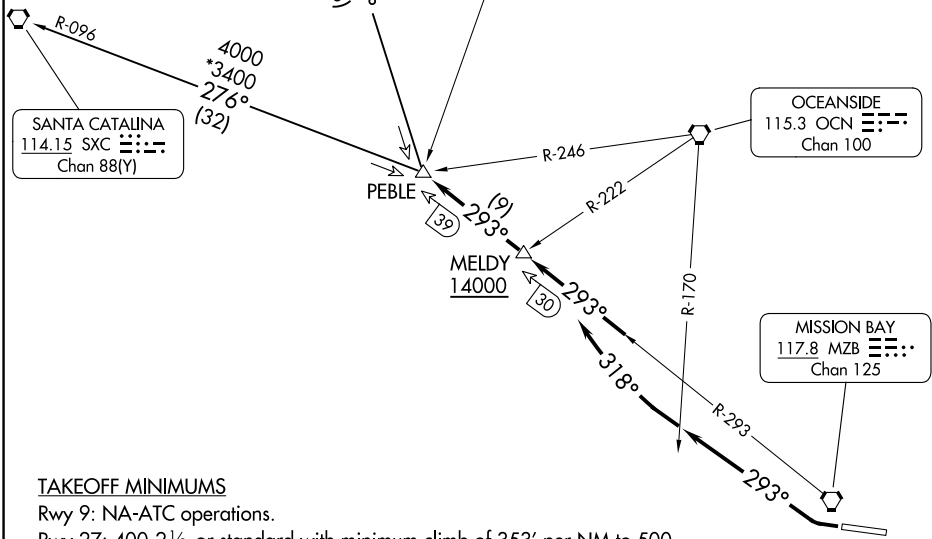
SAN DIEGO INTL (SAN)
SAN DIEGO, CALIFORNIA

**TOP ALTITUDE:
ASSIGNED BY ATC**

SEAL BEACH
115.7 SLI Chan 104

PARADISE
112.2 PDZ Chan 59

SOCAL DEP CON
WEST 119.6 363.1
D-ATIS
134.8
CLNC DEL
125.9
CPDLC
GND CON
123.9
LINDBERGH TOWER
118.3 338.225



TAKEOFF MINIMUMS

Rwy 9: NA-ATC operations.

Rwy 27: 400-2½ or standard with minimum climb of 353' per NM to 500.

NOTE: RADAR required.

NOTE: Aircraft climbing above 13000 expect RADAR vectors northwest bound prior to PEBLE INT.

NOTE: Chart not to scale.

DEPARTURE ROUTE DESCRIPTION

TAKEOFF RUNWAY 27: Climbing right turn heading 293° until crossing OCN VORTAC R-170, then turn right heading 318° to intercept MZB VORTAC R-293 to cross MELDY INT/MZB 30 DME at or above 14000 (or lower ATC assigned altitude) then on MZB R-293 to PEBLE INT/MZB 39 DME, thence. . . .

. . . . via (transition) or (assigned route). Maintain assigned altitude.

SANTA CATALINA TRANSITION (PEBLE6.SXC): From over PEBLE INT on SXC R-096 to SXC VORTAC.

SEAL BEACH TRANSITION (PEBLE6.SLI): From over PEBLE INT on SLI R-148 to SLI VORTAC.

PEBLE SIX DEPARTURE

(PEBLE6.PEBLE) 20AUG15

SAN DIEGO, CALIFORNIA
SAN DIEGO INTL (SAN)

SW-3, 22 FEB 2024 to 21 MAR 2024

SW-3, 22 FEB 2024 to 21 MAR 2024

(SAYOW2.SAYOW) 17285

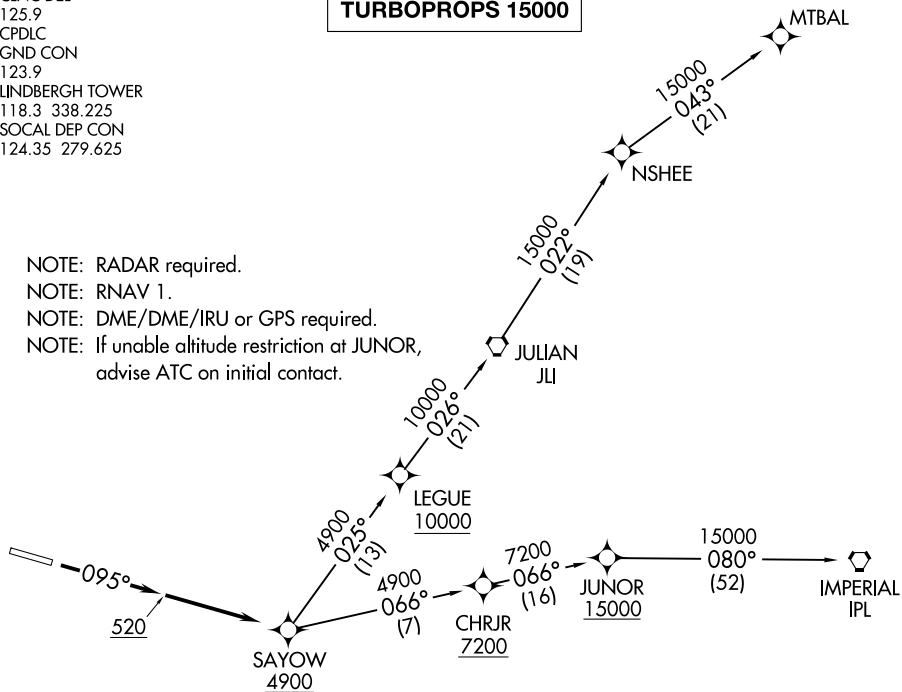
SAYOW TWO DEPARTURE (RNAV) AL-373 (FAA)

SAN DIEGO INTL (SAN)
SAN DIEGO, CALIFORNIA

D-ATIS
134.8
CLNC DEL
125.9
CPDLC
GND CON
123.9
LINDBERGH TOWER
118.3 338.225
SOCAL DEP CON
124.35 279.625

**TOP ALTITUDE:
JETS FL190
TURBOPROPS 15000**

NOTE: RADAR required.
NOTE: RNAV 1.
NOTE: DME/DME/IRU or GPS required.
NOTE: If unable altitude restriction at JUNOR,
advise ATC on initial contact.



TAKEOFF MINIMUMS

Rwy 9: 400-1 with minimum climb of 610' per NM to 1900 or standard with minimum climb of 687' per NM to 1900.
Rwy 27: NA-ATC.

NOTE: Chart not to scale.

DEPARTURE ROUTE DESCRIPTION

TAKEOFF RUNWAY 9: Climb heading 095° to 520, then direct to cross SAYOW at or above 4900, thence

. . . . on (transition) jets maintain FL190, turboprops maintain 15000, expect filed altitude 10 minutes after departure.

IMPERIAL TRANSITION (SAYOW2.IPL)

MTBAL TRANSITION (SAYOW2.MTBAL)

SAYOW TWO DEPARTURE (RNAV)

(SAYOW2.SAYOW) 12OCT17

SAN DIEGO, CALIFORNIA
SAN DIEGO INTL (SAN)

SW-3, 22 FEB 2024 to 21 MAR 2024

SW-3, 22 FEB 2024 to 21 MAR 2024

ZZ000 THREE DEPARTURE (RNAV)
 (ZZ0003.ZZ000) 14JUL22

SAN DIEGO, CALIFORNIA
 SAN DIEGO INTL (SANT)

DEPARTURE ROUTE DESCRIPTION

TAKEOFF RUNWAY 27: Climb direct JETTI, then left turn direct to cross ZZ000 between 6000 and FL230 at or below 230K, thence

. . . . on (transition). Turbojets maintain FL230, turboprops maintain 15000, expect filed altitude 10 minutes after departure.

CENZA TRANSITION (ZZ0003.CENZA)

IMPERIAL TRANSITION (ZZ0003.IPL)

MTBAL TRANSITION (ZZ0003.MTBAL)

TAKEOFF MINIMUMS

Rwy 9: NA-ATC.

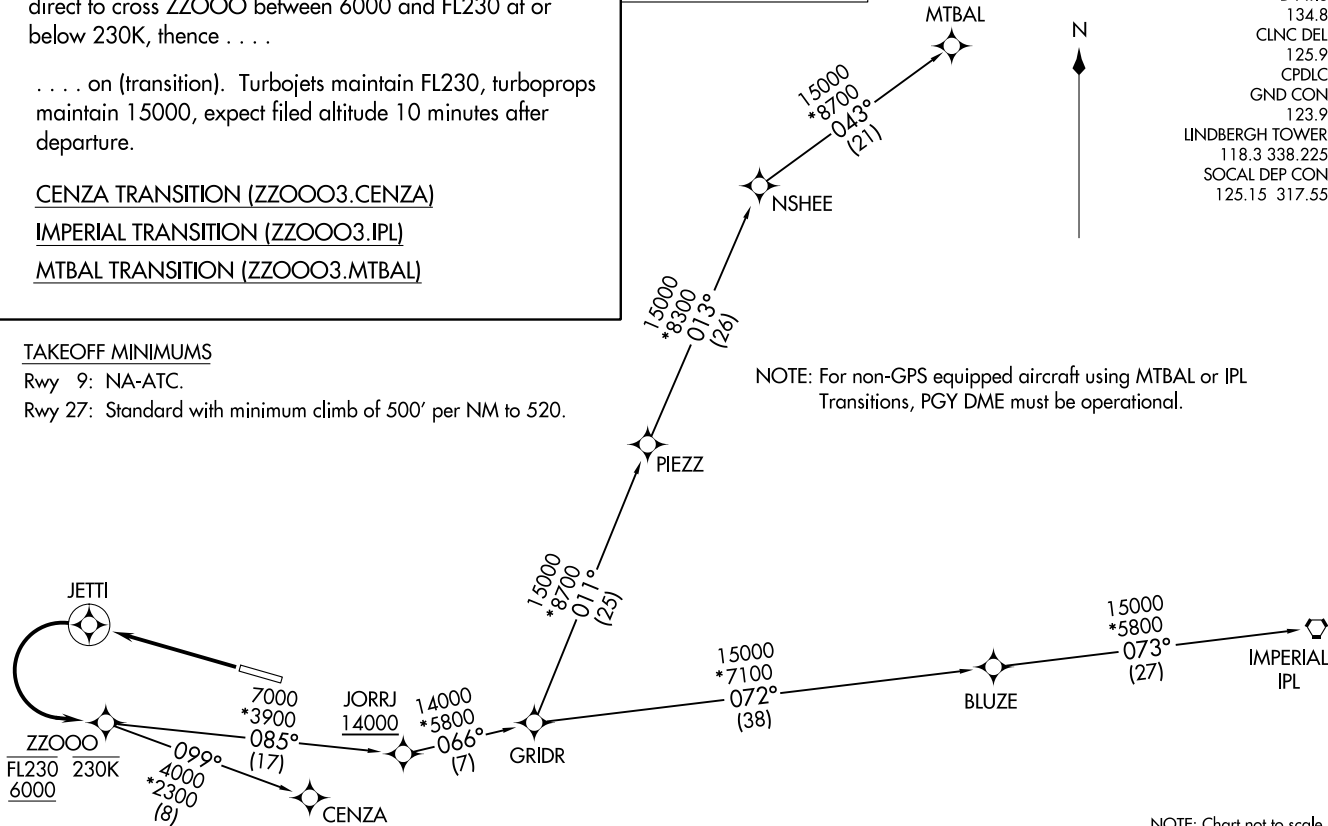
Rwy 27: Standard with minimum climb of 500' per NM to 520.

**TOP ALTITUDE:
 JETS FL230/
 TURBOPROPS 15000**

RNAV 1- DME/DME/IRU or GPS.

RADAR required for non-GPS equipped aircraft.

D-ATIS 134.8
 CLNC DEL 125.9
 CPDLC 123.9
 GND CON 123.9
 LINDBERGH TOWER 118.3 338.225
 SOCIAL DEF CON 125.15 317.55



NOTE: For non-GPS equipped aircraft using MTBAL or IPL Transitions, PGY DME must be operational.

NOTE: Chart not to scale.

ZZ0003.ZZ000) 22195
 ZZ000 THREE DEPARTURE (RNAV)
 AL-373 (FAA)

SAN DIEGO INTL (SANT)
 SAN DIEGO, CALIFORNIA