

LOC/DME I-TXH 110.7 Chan 44	APP CRS 350°	Rwy Idg TDZE Apt Elev	6016 78 82
---	------------------------	-----------------------------	---------------------------------------

ILS or LOC RWY 35

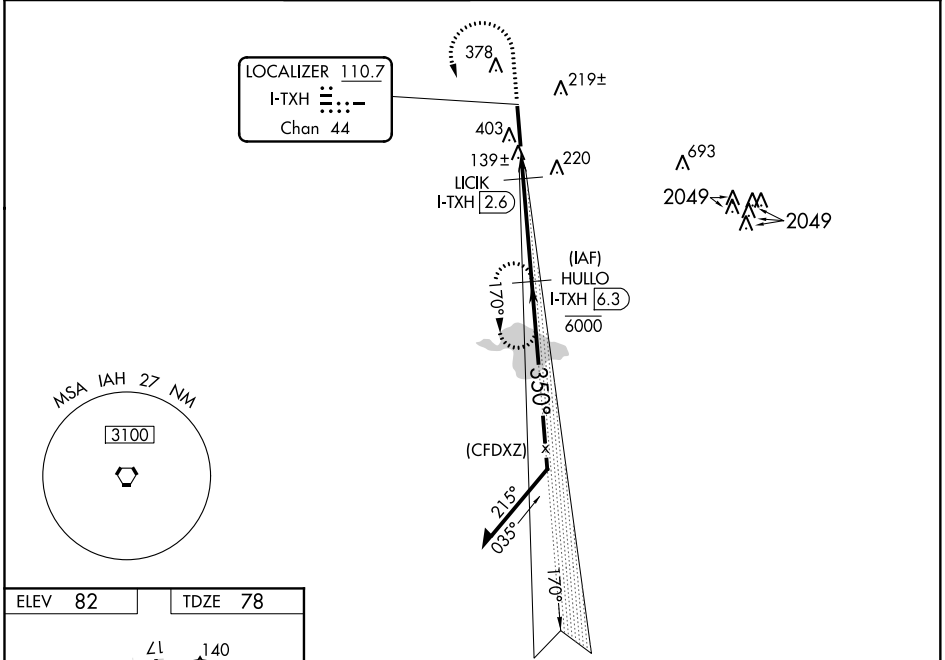
SUGAR LAND RGNL (SGR)

DME required.
RADAR required for procedure entry.

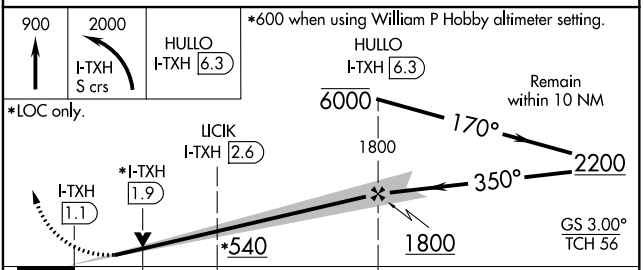
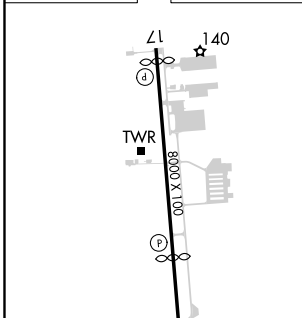
V VDP NA when using William P Hobby altimeter setting. When local altimeter setting not received, use William P Hobby altimeter setting and increase all DA 51 feet and all MDA 60 feet and S-LOC 35 Cat C/D visibility 1/8 mile, and Circling Cat C/D visibility 1/4 mile.

MISSED APPROACH: Climb to 900 then climbing left turn to 2000 on I-TXH localizer south course to HULLO/I-TXH 6.3 DME and hold.

ATIS* 118.125	HOUSTON APP CON 123.8 257.7	SUGAR LAND TOWER* 118.65 (CTAF) 0	GND CON 121.4	CLNC DEL 121.4	CLNC DEL 119.25 (when twr closed)	UNICOM 122.95
-------------------------	---------------------------------------	--	-------------------------	--------------------------	--	-------------------------



ELEV 82	TDZE 78
---------	---------



CATEGORY	A	B	C	D
S-ILS 35		278-3/4	200 (200-3/4)	
S-LOC 35		400-1	322 (400-1)	
C CIRCLING	720-1	638 (700-1)	720-1 3/4 638 (700-1 1/4)	720-2 638 (700-2)

SC-5, 27 JAN 2022 to 24 FEB 2022

SC-5, 27 JAN 2022 to 24 FEB 2022

WAAS CH 82513	APP CRS 170°	Rwy Idg TDZE Apt Elev	7620 82 82
-------------------------	------------------------	-----------------------------	---------------------------------------

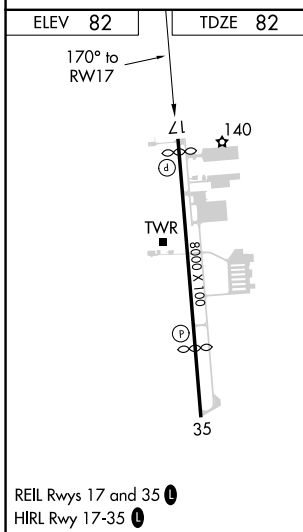
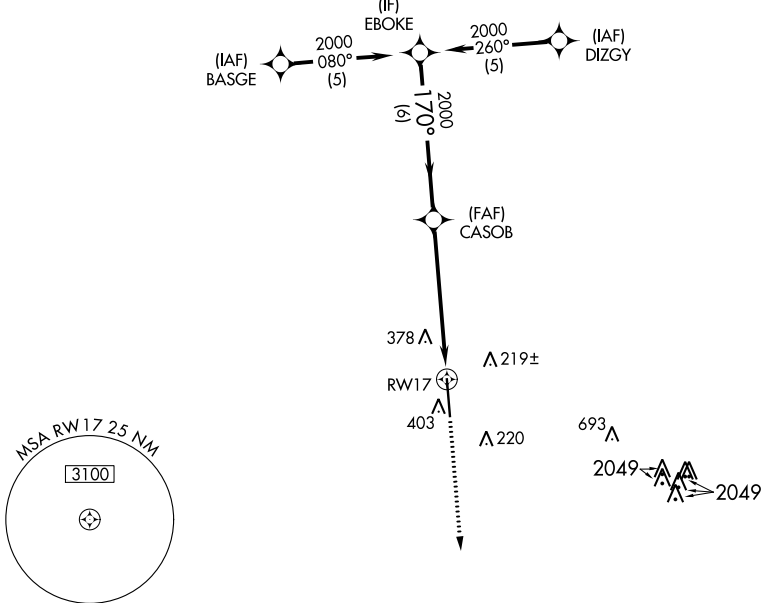
RNAV (GPS) RWY 17

SUGAR LAND RGNL (SGR)

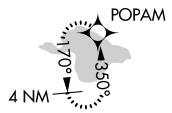
RNP APCH.
 ▼ Rwy 17 helicopter visibility reduction below 3/4 SM NA. For uncompensated Baro-VNAV systems, LNAV/VNAV NA below -15°C or above 54°C.

MISSED APPROACH: Climb to 2000 direct POPAM and hold.

ATIS*	HOUSTON APP CON	SUGAR LAND TOWER*	GND CON	CLNC DEL	CLNC DEL	UNICOM
118.125	123.8 257.7	118.65 (CTAF) 0	121.4	121.4	119.25 (when twr closed)	122.95



REIL Rwy 17 and 35 **0**
 HIRL Rwy 17-35 **0**



VGSI and RNAV glidepath not coincident (VGSI Angle 3.5/TCH 52).

EBOKE	CASOB	POPAM		
2000	2000	2000		
GP 3.00° TCH 52				
6 NM	4.4 NM	1.4 NM		
170°				
		*1.4 NM to RWY 17		
		*LNAV only.		
CATEGORY	A	B	C	D
LPV DA	398-1 316 (400-1)			
LNAV/VNAV DA	704-2 622 (700-2)			
LNAV MDA	640-1	558 (600-1)	640-1 5/8	558 (600-1 5/8)
CIRCLING	720-1	638 (700-1)	720-1 3/4 638 (700-1 3/4)	720-2 638 (700-2)

SC-5, 27 JAN 2022 to 24 FEB 2022

SC-5, 27 JAN 2022 to 24 FEB 2022

WAAS CH 56219 W35A	APP CRS 350°	Rwy Idg TDZE Apt Elev	6016 78 82
--	------------------------	-----------------------------	---------------------------------------

RNAV (GPS) RWY 35

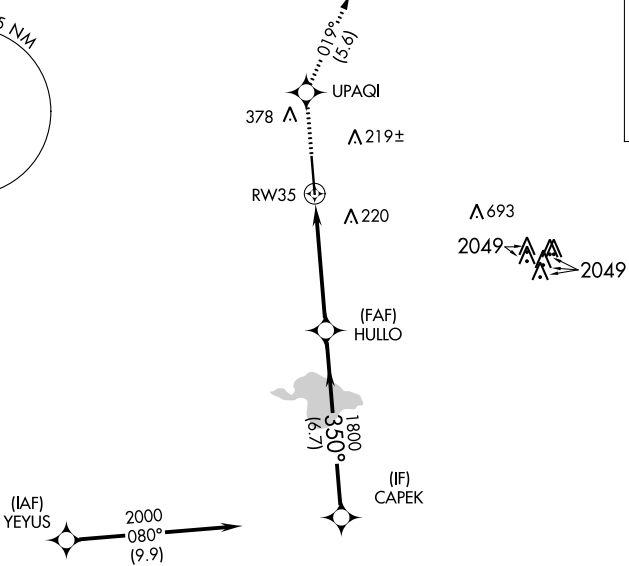
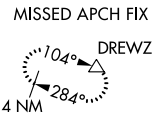
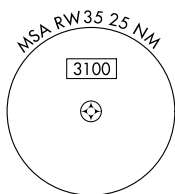
SUGAR LAND RGNL (SGR)

RNP APCH.

⚠ For uncompensated Baro-VNAV systems, LNAV/VNAV NA below -15°C (5°F) or above 43°C (109°F).
⚠ Baro-VNAV and VDP NA when using William P Hobby altimeter setting. When local altimeter setting not received, use William P Hobby altimeter setting; increase all DA 51 feet; increase all MDA 60 feet and increase LNAV-VNAV all Cats visibility to 1¾, LNAV Cat C/D visibility to 1⅞, and Circling Cat C visibility to 2, Cat D to 2¼. When VGSI inop, Circling Rwy 17 NA at night.

MISSED APPROACH:
Climb to 2000 direct UPAQI and on track 019° to DREWZ and hold.

ATIS★ 118.125	HOUSTON APP CON 123.8 257.7	SUGAR LAND TOWER★ 118.65 (CTAF) 0	GND CON 121.4	CLNC DEL 121.4	CLNC DEL 119.25 (when twr closed)	UNICOM 122.95
-------------------------	---------------------------------------	--	-------------------------	--------------------------	--	-------------------------

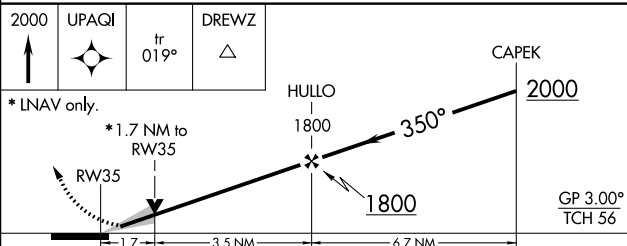
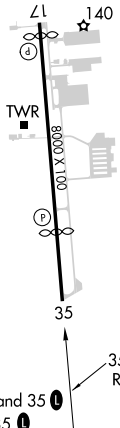


SC-5, 27 JAN 2022 to 24 FEB 2022

SC-5, 27 JAN 2022 to 24 FEB 2022

ELEV 82	TDZE 78
---------	---------

RADAR REQUIRED



CATEGORY	A	B	C	D
LPV DA		278-¾	200 (200-¾)	
LNAV/VNAV DA		567-1⅝	489 (500-1⅞)	
LNAV MDA	660-1	582 (600-1)	660-1¾	582 (600-1¾)
C CIRCLING	720-1	638 (700-1)	720-1¾ 638 (700-1¾)	720-2 638 (700-2)