

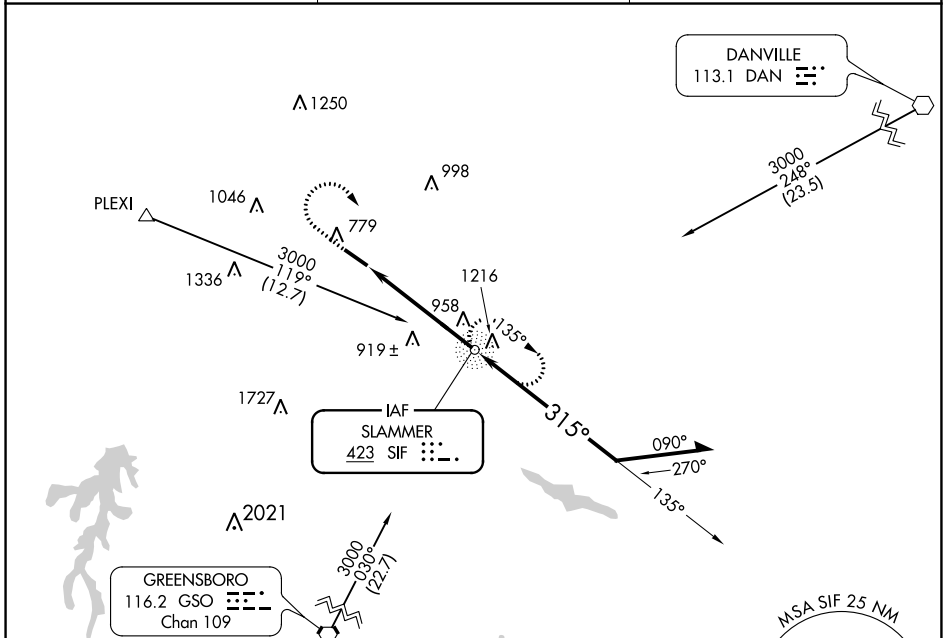
NDB SIF	APP CRS	Rwy Idg TDZE	<b>5200</b> <b>668</b>
<b>423</b>	<b>315°</b>	Apt Elev	<b>694</b>

# NDB RWY 31

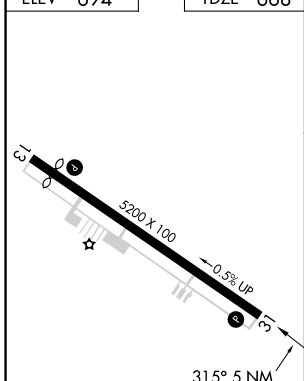
ROCKINGHAM COUNTY NC SHILOH (SIF)

**▼** Rwy 31 helicopter visibility reduction below 1 SM NA. **▲** MISSED APPROACH: Climb to 1600 then climbing right turn to 2600 direct SIF NDB and hold.

AWOS-3 <b>119.775</b>	GREENSBORO APP CON <b>124.35 269.225</b>	UNICOM <b>122.8 (CTAF) 0</b>
--------------------------	---	---------------------------------



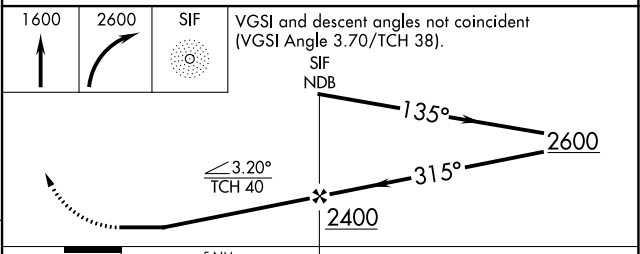
ELEV 694	TDZE 668
----------	----------



REIL Rwy 13 and 31 **0**  
HIRL Rwy 13-31 **0**

FAF to MAP 5 NM

Knots	60	90	120	150	180
Min:Sec	5:00	3:20	2:30	2:00	1:40



CATEGORY	A	B	C	D
S-31	1220-1	552 (600-1)	1220-1½ 552 (600-1½)	1220-1¾ 552 (600-1¾)
CIRCLING	1280-1 586 (600-1)	1320-1 626 (700-1)	1360-1¾ 666 (700-1¾)	1420-2¼ 726 (800-2¼)

SE-2, 07 SEP 2023 to 05 OCT 2023

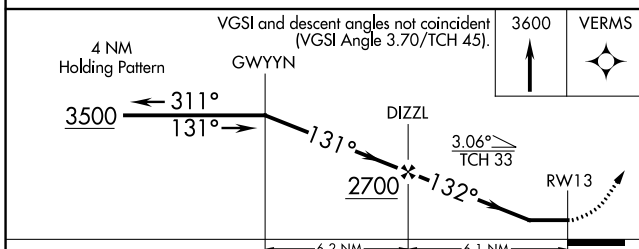
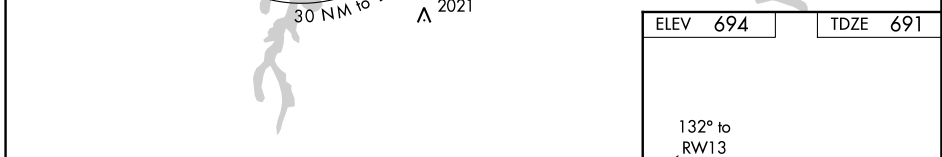
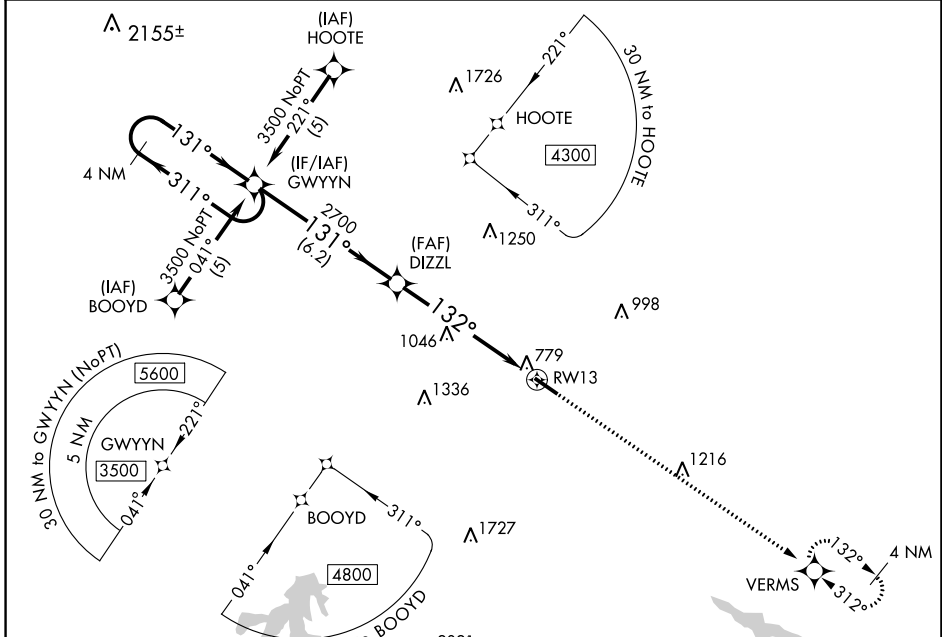
SE-2, 07 SEP 2023 to 05 OCT 2023

APP CRS **132°**  
 Rwy Idg **4700**  
 TDZE **691**  
 Apt Elev **694**

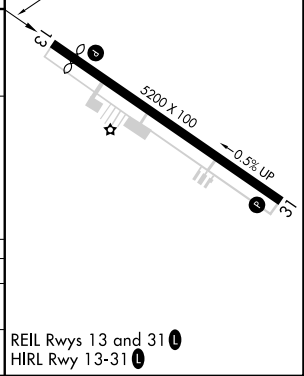
**RNAV (GPS) RWY 13**  
 ROCKINGHAM COUNTY NC SHILOH (SIF')

RNP APCH.  
 Rwy 13 helicopter visibility reduction below 1 SM NA.  
 Procedure NA at night.  
 MISSED APPROACH: Climb to 3600 direct VERMS and hold.

AWOS-3 **119.775**      GREENSBORO APP CON **124.35 269.225**      UNICOM **122.8 (CTAF)**



CATEGORY	A	B	C	D
LNVA MDA	1300-1	609 (700-1)	1300-1¼ 609 (700-1¼)	1300-2 609 (700-2)
CIRCLING	1300-1 606 (700-1)	1320-1 626 (700-1)	1360-1¼ 666 (700-1¼)	1420-2¼ 726 (800-2¼)



SE-2, 07 SEP 2023 to 05 OCT 2023

SE-2, 07 SEP 2023 to 05 OCT 2023

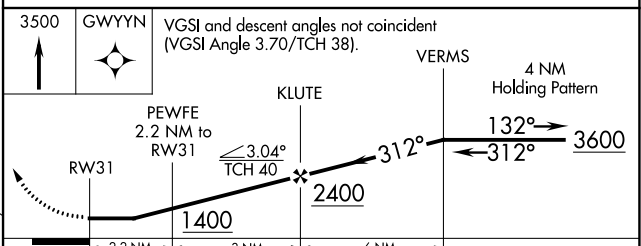
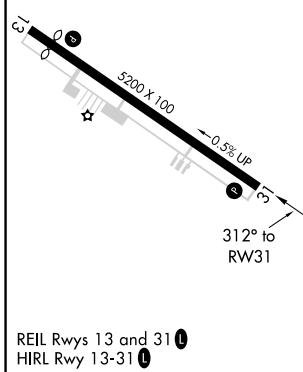
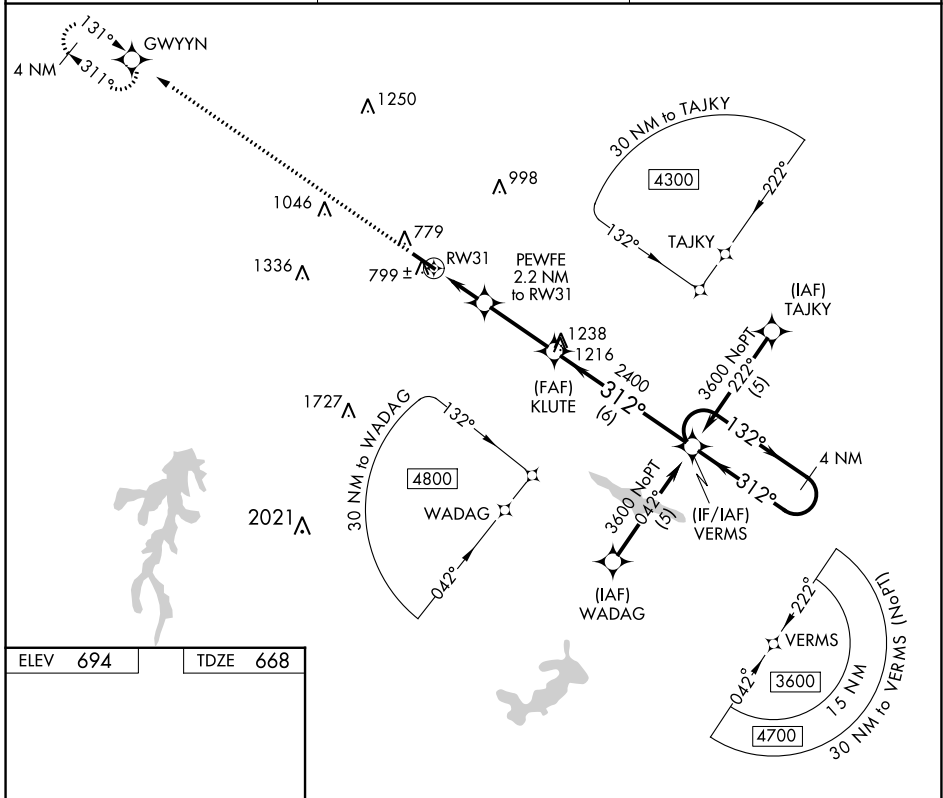
APP CRS	Rwy Idg	<b>5200</b>
<b>312°</b>	TDZE	<b>668</b>
	Apt Elev	<b>694</b>

# RNAV (GPS) RWY 31

ROCKINGHAM COUNTY NC SHILOH (SIF')

RNP APCH.	MISSED APPROACH: Climb to 3500 direct GWYYN and hold.
Rwy 31 helicopter visibility reduction below 1 SM NA.	

AWOS-3 <b>119.775</b>	GREENSBORO APP CON <b>124.35 269.225</b>	UNICOM <b>122.8 (CTAF) 0</b>
--------------------------	---	---------------------------------



CATEGORY	A	B	C	D
LNAV MDA	1060-1 392 (400-1)			1060-1¼ 392 (400-1¼)
CIRCLING	1280-1 586 (600-1)	1320-1 626 (700-1)	1360-1¾ 666 (700-1¾)	1420-2¼ 726 (800-2¼)

SE-2, 07 SEP 2023 to 05 OCT 2023

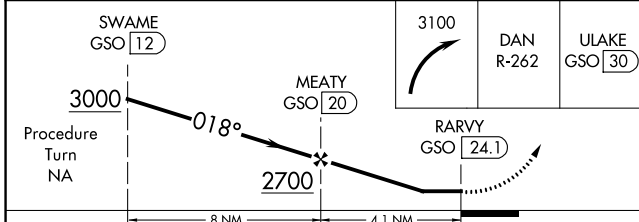
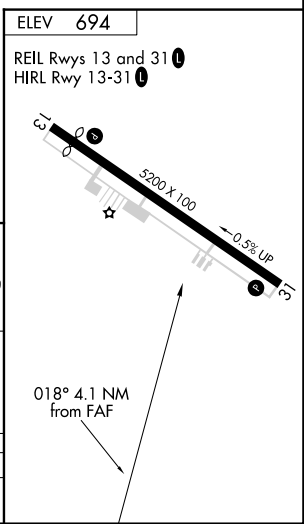
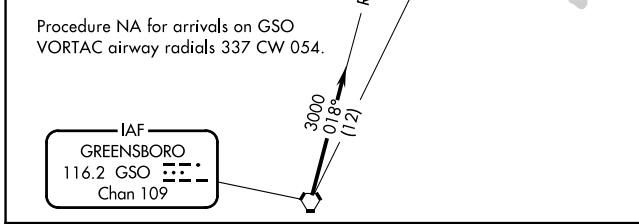
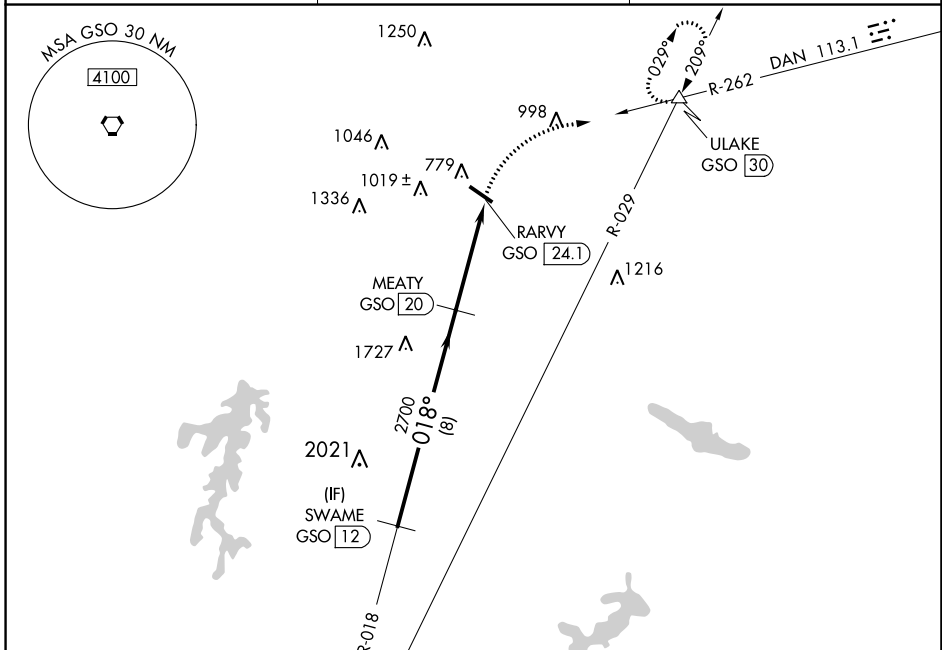
SE-2, 07 SEP 2023 to 05 OCT 2023

VORTAC GSO <b>116.2</b> Chan <b>109</b>	APP CRS <b>018°</b>	Rwy Idg TDZE Apt Elev <b>N/A</b> <b>N/A</b> <b>694</b>
---	------------------------	--

**VOR/DME-A**  
ROCKINGHAM COUNTY NC SHILOH (SIF')

<p><b>NA</b> Helicopter visibility reduction NA. Procedure NA at night.</p>	<p>MISSED APPROACH: Climbing right turn to 3100 via DAN VOR R-262 to ULAKE/GSO 30 DME and hold.</p>
---	---

<p>AWOS-3 <b>119.775</b></p>	<p>GREENSBORO APP CON <b>124.35 269.225</b></p>	<p>UNICOM <b>122.8 (CTAF)</b></p>
----------------------------------	---	---------------------------------------



CATEGORY	A	B	C	D
CIRCLING	1400-1 706 (800-1)	1400-1¼ 706 (800-1¼)	1400-2 706 (800-2)	1420-2¼ 726 (800-2¼)

SE-2, 07 SEP 2023 to 05 OCT 2023

SE-2, 07 SEP 2023 to 05 OCT 2023