

LOS ALAMITOS, CALIFORNIA

# RNAV (GPS) RWY 22L

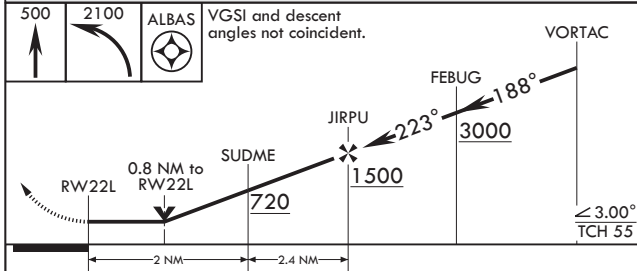
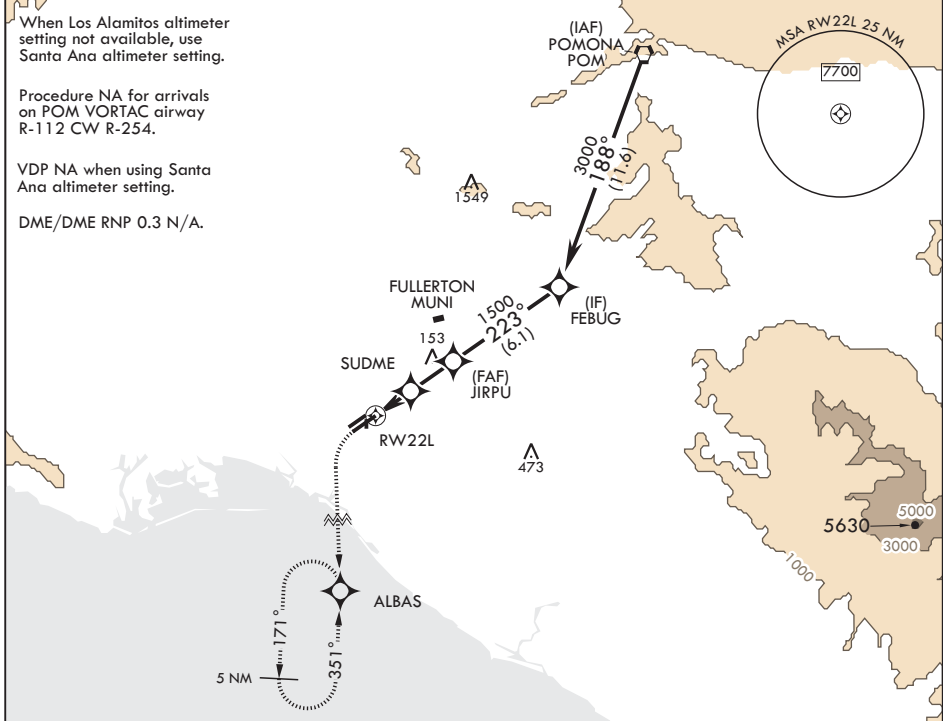
APCH CRS	Rwy Idg	8001
223°	TDZE	35
	Arprt Elev	35

AL-953 (USA)

LOS ALAMITOS AAF (KSLI)

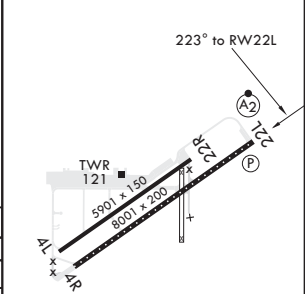
<p>* When ALS inop, increase CAT D vis to 1 mile.                  ** When ALS inop using SANTA ANA altimeter setting, increase CAT D vis to 1 1/8 mile.                  *** Circling not authorized N of Rwy 4L-22R.</p>	<p>SALS</p>	<p>MISSED APPROACH: Climb to 500 then climbing left turn to 2100 direct ALBAS and hold.</p>
	<p>When Los Alamitos altimeter setting not available, use Santa Ana altimeter setting.</p>	
	<p>Procedure NA for arrivals on POM VORTAC airway R-112 CW R-254.</p>	

<p>ATIS*</p> <p>118.875 379.975</p>	<p>SOCAL APP CON</p> <p>125.35 316.125</p>	<p>TOWER*</p> <p>123.85 (CTAF) 251.15</p>	<p>GND CON</p> <p>126.95 257.95</p>	<p>ASR/PAR</p>
-------------------------------------	--	---	-------------------------------------	----------------



ELEV 35	TDZE 35
---------	---------

CATEGORY	A	B	C	D
LNAV MDA*	380-3/4 345 (400-3/4)			
<p>CIRCLING***</p>	440-1	500-1	560-1 1/2	680-2
	405 (500-1)	465 (500-1)	525 (600-1 1/2)	645 (700-2)
SANTA ANA ALTIMETER SETTING MINIMUMS				
LNAV MDA**	420-3/4	385 (400-3/4)	420-7/8	385 (400-7/8)
<p>CIRCLING***</p>	480-1	540-1	600-1 1/2	720-2
	445 (500-1)	505 (600-1)	565 (600-1 1/2)	685 (700-2)



REIL Rwy 22L
HIRL Rwy 4R-22L
MIRL Rwy 4L-22R

LOS ALAMITOS, CALIFORNIA

33°47'N - 118°03'W

LOS ALAMITOS AAF (KSLI)

Amdt 1 07DEC17

# RNAV (GPS) RWY 22L

SW-3, 07 OCT 2021 to 04 NOV 2021

SW-3, 07 OCT 2021 to 04 NOV 2021

# VOR or TACAN Rwy 22L

LOS ALAMITOS, CALIFORNIA

AL-953 (USA)

LOS ALAMITOS AAF

(KSL)

VORTAC SUI Chan 104	APCH CRS 214°	Rwy Idg 8001	TDZE 35	Appt Elev 35
------------------------	------------------	-----------------	------------	-----------------

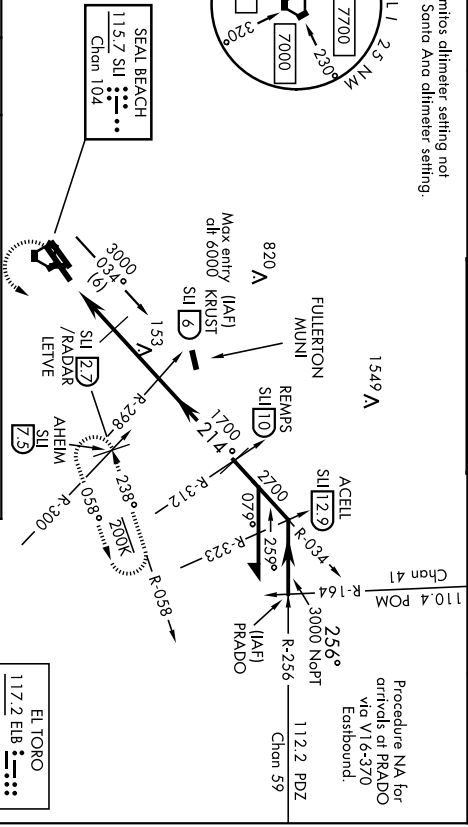
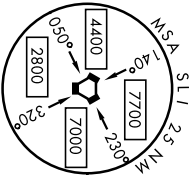
SAISF  
 INI and hold.

MISSED APPROACH: Climb to 1800, then climbing left turn to 3000 via SUI VORTAC R-058 to AHEIM

ATIS * 118.875 379.975	SOCAL APP CON 125.35 316.125	TOWER * 123.85 251.15	GND CON 126.95 257.95	ASR/ PAR
---------------------------	---------------------------------	--------------------------	--------------------------	-------------

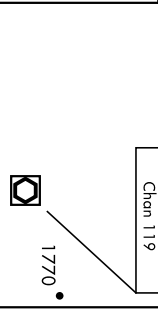
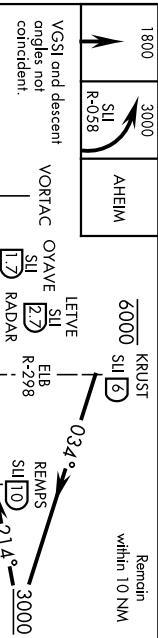
When Los Alamitos altimeter setting not available, use Santa Ana altimeter setting.

1549 A



SEAL BEACH  
115.2 SUI  
Chan 104

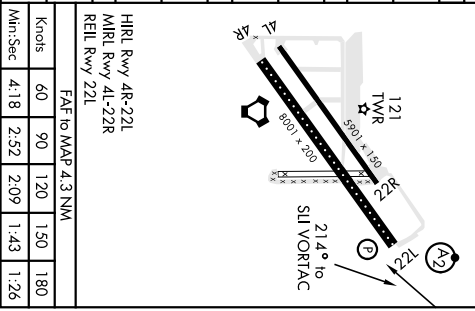
EL TORO  
117.2 ELB  
Chan 119



VGSJ and descent angles not constant.  
 † At or above 620 when using Santa Ana Altimeter setting.

ELEV 35 TDZE 35

CATEGORY	A	B	C	D
S-22L *	440-¾	405 (500-¾)	440-1	440-1½
CIRCLING **	440-1	500-1	405 (500-1)	405 (500-1½)
S-22L	580-¾	545 (600-¾)	580-1½	545 (600-1½)
CIRCLING **	580-1	545 (600-1)	580-1½	545 (600-2)
S-22L *	480-¾	445 (500-¾)	480-1	480-1½
CIRCLING **	480-1	540-1	445 (500-1)	445 (500-1½)
S-22L	620-¾	585 (600-¾)	620-1½	585 (600-1½)
CIRCLING **	620-1	585 (600-1)	620-1½	585 (700-2)



LOS ALAMITOS, CALIFORNIA  
 33° 47' N-118° 03' W  
 LOS ALAMITOS AAF (KSL)  
 HIRL Rwy 48-22L  
 MRL Rwy 4L-22R  
 RFL Rwy 22L  
 FAF to MAP 4.3 NM  
 Knots 60 90 120 150 180  
 Min./Sec 4:18 2:52 2:09 1:43 1:26  
 SW-3, 07 OCT 2021 to 04 NOV 2021

# VOR or TACAN Rwy 22L