

APP CRS	Rwy Idg	5510
175°	TDZE	4041
	Apt Elev	4044

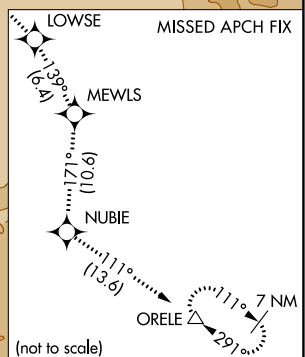
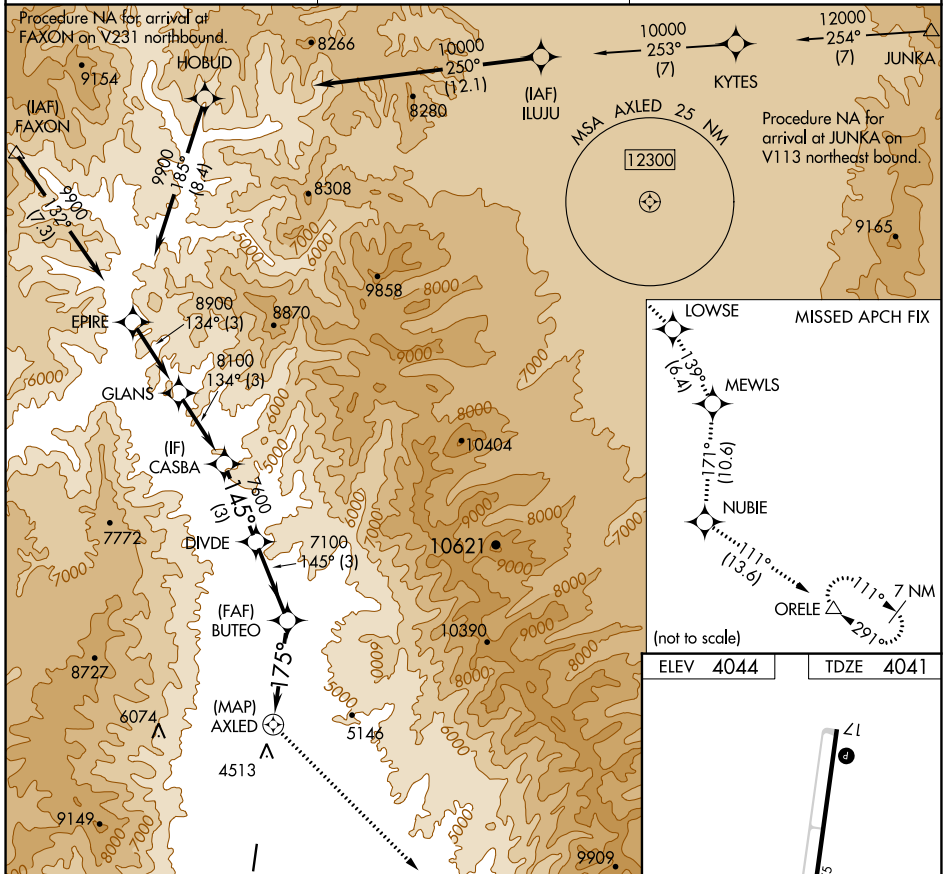
RNAV (GPS) RWY 17

LEMHI COUNTY (SMN)

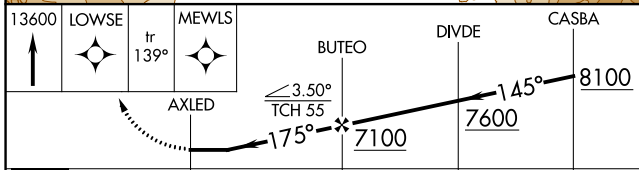
NA
-13°C
 DME/DME RNP-0.3 NA. Night landing: Rwy 35 NA.
 Circling NA for Cats B and C east of Rwy 17-35.
 Helicopter visibility reduction below 3/4 SM NA.

MISSED APPROACH: Climb to 13600 direct LOWSE and track 139° to MEWLS and track 171° to NUBIE and track 111° to ORELE and hold, continue climb-in-hold to 13600.

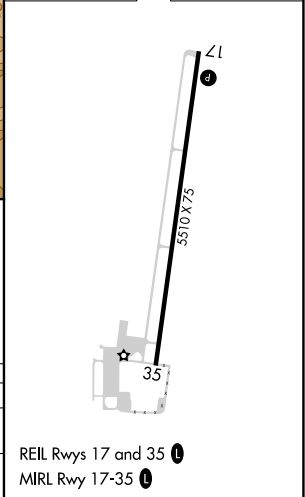
AWOS-3PT 135.075	SALT LAKE CENTER 132.4 338.3	UNICOM 122.8 (CTAF)
----------------------------	--	-------------------------------



ELEV 4044	TDZE 4041
-----------	-----------



CATEGORY	A	B	C	D
LNVA MDA	5740-5 1699 (1700-5)			NA
C CIRCLING	5740-5	1696 (1700-5)	6180-5 2136 (2200-5)	NA



NW-1, 22 FEB 2024 to 21 MAR 2024

NW-1, 22 FEB 2024 to 21 MAR 2024

APP CRS 009°	Rwy Idg TDZE Apt Elev	N/A N/A 4044
------------------------	-----------------------------	---

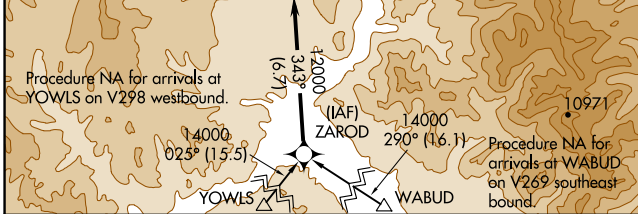
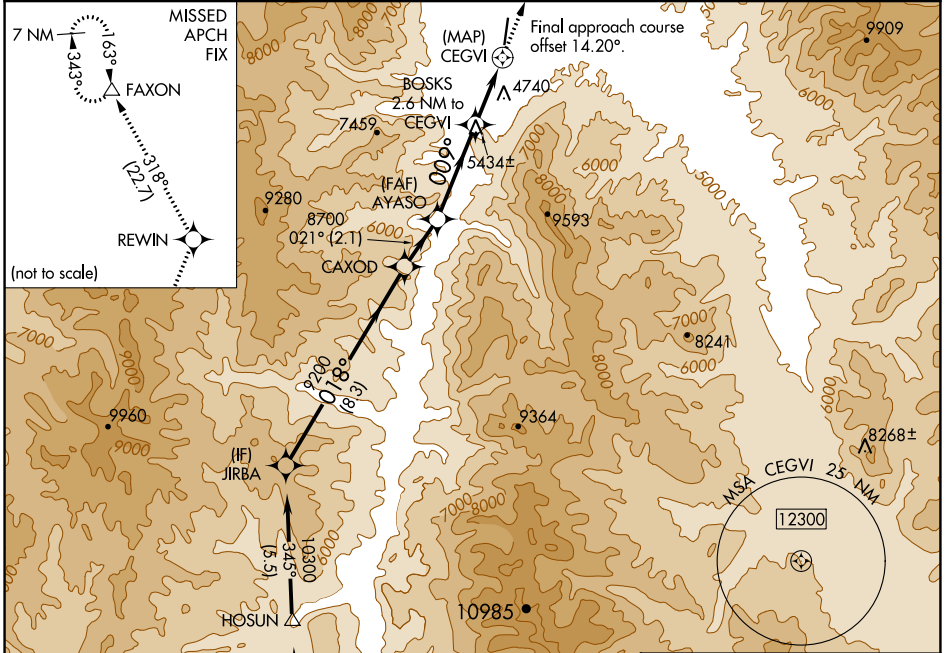
RNAV (GPS)-D

LEMHI COUNTY (SMN)

NA Circling Rwy 35 NA at night.
NA DME/DME RNP-0.3 NA.
-13°C Circling NA for Cat C east of Rwy 17-35.

MISSED APPROACH: Climb to 12000 direct REWIN and on track 318° to FAXON and hold, continue climb-in-hold to 12000.

AWOS-3PT 135.075	SALT LAKE CENTER 132.4 338.3	UNICOM 122.8 (CTAF)
----------------------------	--	-------------------------------



ELEV 4044

REIL Rwys 17 and 35
MIRL Rwy 17-35

JIRBA	CAXOD	AYASO	BOSKS 2.6 NM to CEGVI	CEGVI	FAXON
10300	9200	8700	7020	7020	
	018°	021°	009°	318°	
	8.3 NM	2.1 NM	3.6 NM	2.6 NM	0.5

CATEGORY	A	B	C	D
C CIRCLING	6000-1¼ 1956 (2000-1¼)	6000-1½ 1956 (2000-1½)	6220-3 2176 (2200-3)	NA

NW-1, 22 FEB 2024 to 21 MAR 2024

NW-1, 22 FEB 2024 to 21 MAR 2024

VOR/DME LKT 113.5 Chan 82	APP CRS 043°	Rwy Idg TDZE Apt Elev 4044	N/A N/A 4044
---	------------------------	--------------------------------------	--------------------

VOR/DME-B

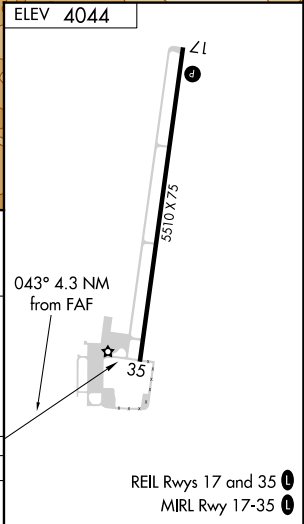
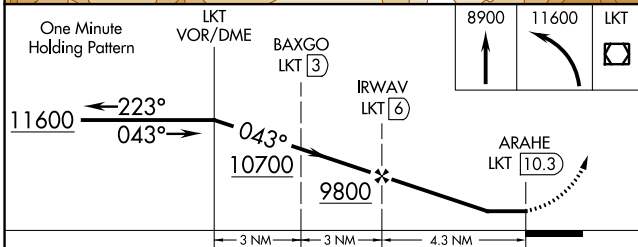
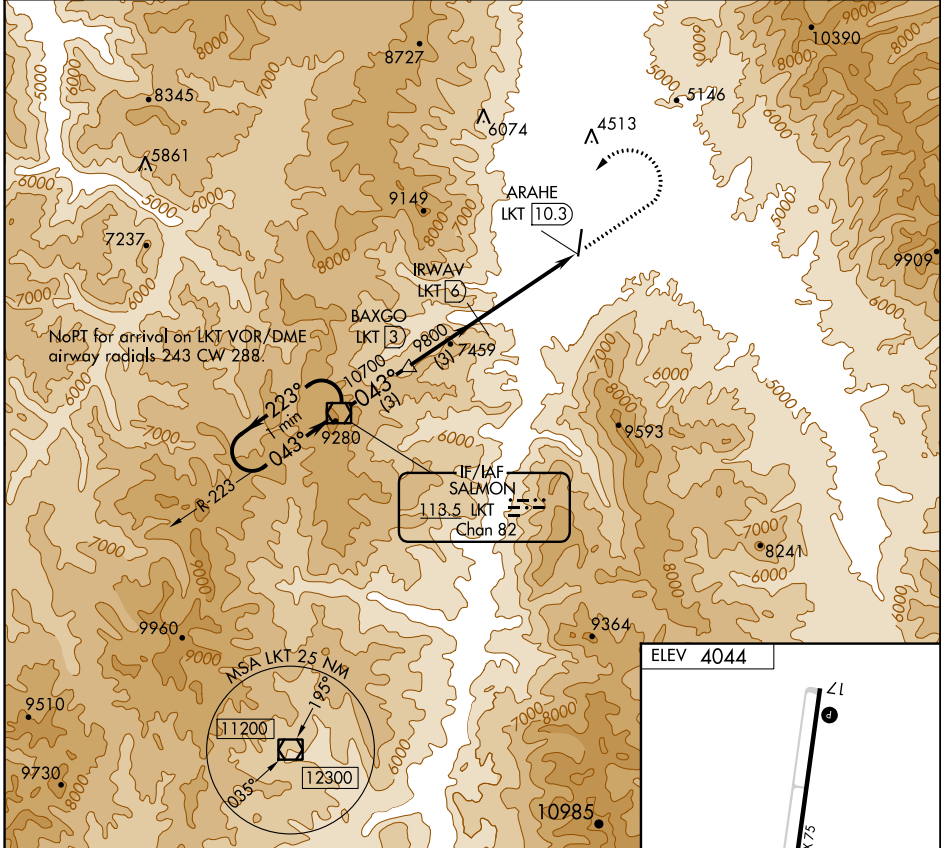
LEMHI COUNTY (SMN)

NA
-13°C

Circling NA for Cat C east of Rwy 17-35.
Night Landing: Rwy 35 NA.

MISSED APPROACH: Climb to 8900 then climbing left turn to 11600 direct LKT VOR/DME and hold, continue climb-in-hold to 11600.

AWOS-3PT 135.075	SALT LAKE CENTER 132.4 338.3	UNICOM 122.8 (CTAF)
----------------------------	--	-------------------------------



CATEGORY	A	B	C	D
CIRCLING	8100-1¼ 4056 (4100-1¼)	8100-1½ 4056 (4100-1½)	8100-3 4056 (4100-3)	NA

NW-1, 22 FEB 2024 to 21 MAR 2024

NW-1, 22 FEB 2024 to 21 MAR 2024