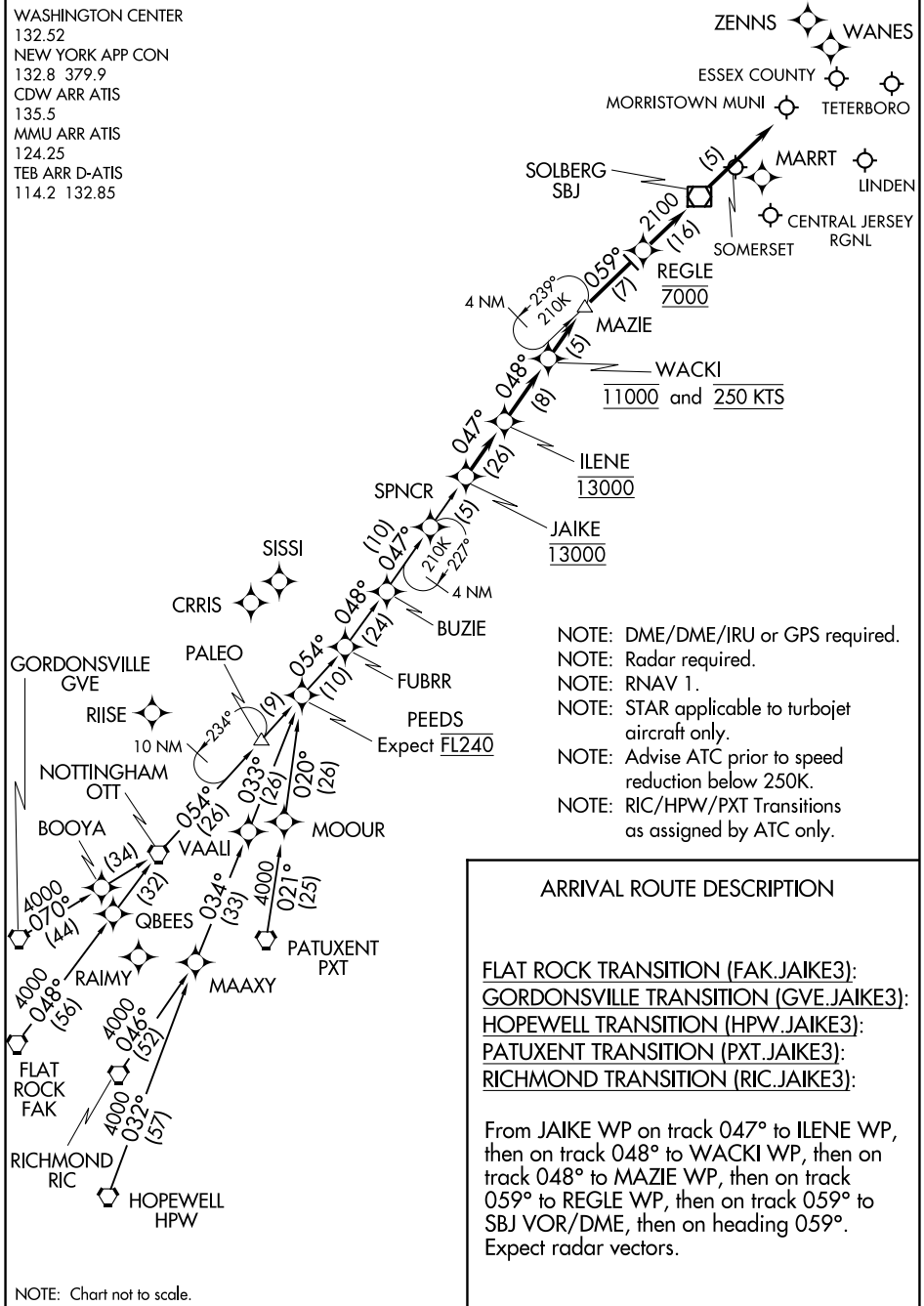


# JAIKE THREE ARRIVAL (RNAV)

TETERBORO, NEW JERSEY

WASHINGTON CENTER  
 132.52  
 NEW YORK APP CON  
 132.8 379.9  
 CDW ARR ATIS  
 135.5  
 MMU ARR ATIS  
 124.25  
 TEB ARR D-ATIS  
 114.2 132.85



- NOTE: DME/DME/IRU or GPS required.
- NOTE: Radar required.
- NOTE: RNAV 1.
- NOTE: STAR applicable to turbojet aircraft only.
- NOTE: Advise ATC prior to speed reduction below 250K.
- NOTE: RIC/HPW/PXT Transitions as assigned by ATC only.

## ARRIVAL ROUTE DESCRIPTION

- FLAT ROCK TRANSITION (FAK.JAIKE3):
- GORDONSVILLE TRANSITION (GVE.JAIKE3):
- HOPEWELL TRANSITION (HPW.JAIKE3):
- PATUXENT TRANSITION (PXT.JAIKE3):
- RICHMOND TRANSITION (RIC.JAIKE3):

From JAIKE WP on track 047° to ILENE WP, then on track 048° to WACKI WP, then on track 048° to MAZIE WP, then on track 059° to REGLE WP, then on track 059° to SBJ VOR/DME, then on heading 059°. Expect radar vectors.

NOTE: Chart not to scale.

NE-2, 25 FEB 2021 to 25 MAR 2021

NE-2, 25 FEB 2021 to 25 MAR 2021

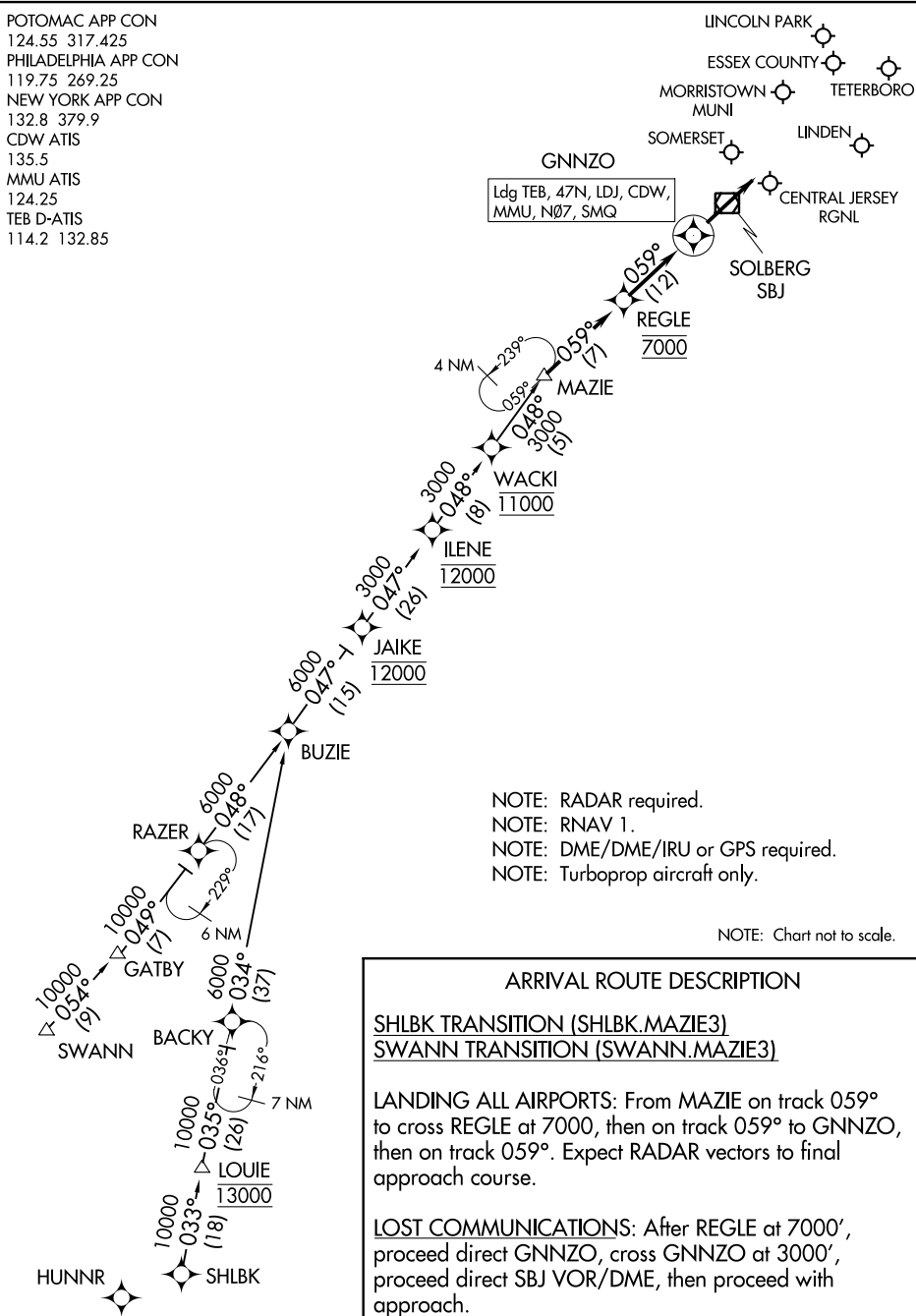
# JAIKE THREE ARRIVAL (RNAV)

TETERBORO, NEW JERSEY

# MAZIE THREE ARRIVAL (RNAV)

TETERBORO, NEW JERSEY

POTOMAC APP CON  
 124.55 317.425  
 PHILADELPHIA APP CON  
 119.75 269.25  
 NEW YORK APP CON  
 132.8 379.9  
 CDW ATIS  
 135.5  
 MMU ATIS  
 124.25  
 TEB D-ATIS  
 114.2 132.85



Ldg TEB, 47N, LDJ, CDW,  
 MMU, N07, SMQ

- NOTE: RADAR required.
- NOTE: RNAV 1.
- NOTE: DME/DME/IRU or GPS required.
- NOTE: Turboprop aircraft only.

NOTE: Chart not to scale.

### ARRIVAL ROUTE DESCRIPTION

SHLBK TRANSITION (SHLBK.MAZIE3)  
SWANN TRANSITION (SWANN.MAZIE3)

**LANDING ALL AIRPORTS:** From MAZIE on track 059° to cross REGLE at 7000, then on track 059° to GNNZO, then on track 059°. Expect RADAR vectors to final approach course.

**LOST COMMUNICATIONS:** After REGLE at 7000', proceed direct GNNZO, cross GNNZO at 3000', proceed direct SBJ VOR/DME, then proceed with approach.

NE-2, 25 FEB 2021 to 25 MAR 2021

NE-2, 25 FEB 2021 to 25 MAR 2021

# MAZIE THREE ARRIVAL (RNAV)

TETERBORO, NEW JERSEY

WILKES-BARRE FOUR ARRIVAL  
(LVZ.LVZ4) 200CT11

WILKES-BARRE FOUR ARRIVAL  
(LVZ.LVZ4) 20310

NEW YORK APP CON  
127.6 379.9  
EW R D-ATIS  
115.7

JAMESTOWN  
114.7 JHW :---  
Chan 94  
N42°11.32'-W79°07.28'  
L-30, H-10

ELMIRA  
109.65 ULW :---  
Chan 33 (Y)

DMACK  
N41°47.15'  
W77°33.12'

WILKES-BARRE  
111.6 LVZ :---  
Chan 53  
N41°16.37'-W75°41.37'  
Expect FL180

HUGUENOT  
116.1 HUO :---  
Chan 108

HOXIE  
N41°51.90'  
W77°51.16'

STENT  
N41°40.74'  
W77°09.17'

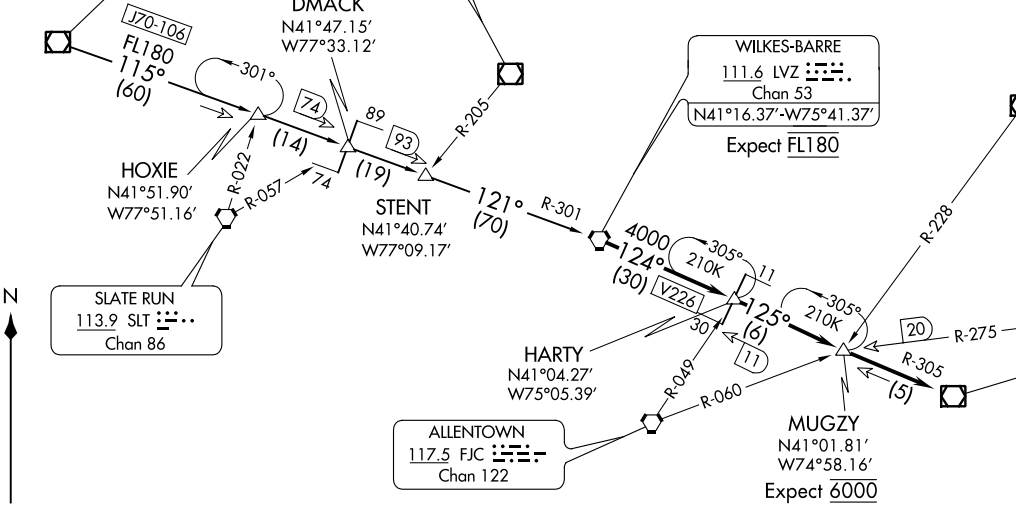
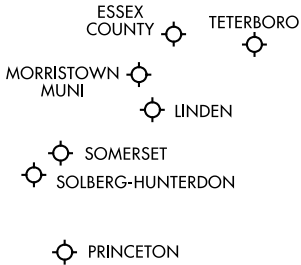
SPARTA  
115.7 SAX :---  
Chan 104

SLATE RUN  
113.9 SLT :---  
Chan 86

ALLENTOWN  
117.5 FJC :---  
Chan 122

MUGZY  
N41°01.81'  
W74°58.16'  
Expect 6000

STILLWATER  
109.6 STW :---  
Chan 33  
N40°59.75'-W74°52.14'



**ARRIVAL ROUTE DESCRIPTION**

JAMESTOWN TRANSITION (JHW.LVZ4): From over JHW VOR/DME on JHW R-115 and LVZ R-301 to LVZ VORTAC. Thence . . . .

. . . . from over LVZ VORTAC, on LVZ R-124 and STW R-305 to STW VOR/DME. Expect radar vectors to final approach course.

NOTE: This STAR applicable to all aircraft capable of 250 KIAS or greater landing at Teterboro, Morristown Muni, Essex County, Princeton, Solberg-Hunterdon, Linden, and Somerset.

NOTE: Advise ATC prior to speed reduction below 250 Knots.

NOTE: Chart not to scale.

TETERBORO, NEW JERSEY

TETERBORO, NEW JERSEY