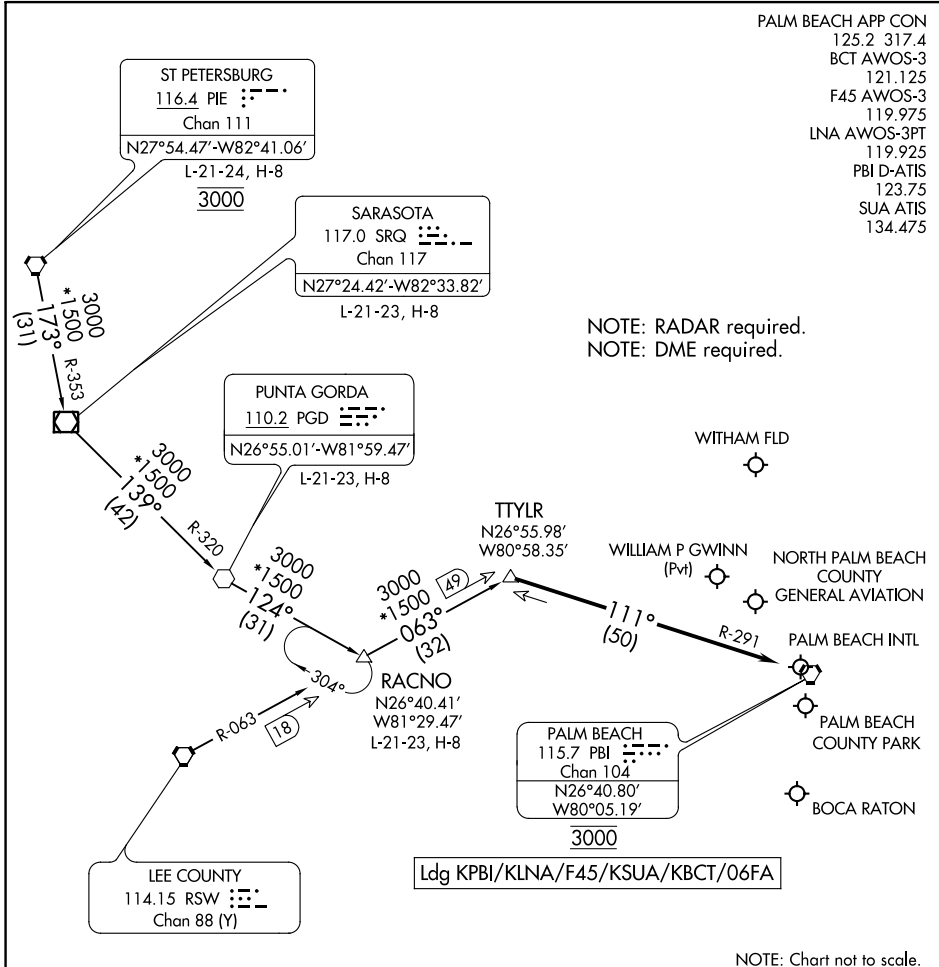


TTYLR THREE ARRIVAL

WEST PALM BEACH, FLORIDA

PALM BEACH APP CON
 125.2 317.4
 BCT AWOS-3
 121.125
 F45 AWOS-3
 119.975
 LNA AWOS-3PT
 119.925
 PBI D-ATIS
 123.75
 SUA ATIS
 134.475



SE-3, 22 FEB 2024 to 21 MAR 2024

SE-3, 22 FEB 2024 to 21 MAR 2024

NOTE: Chart not to scale.

ARRIVAL ROUTE DESCRIPTION

PUNTA GORDA TRANSITION (PGD.TTYLR3): From over PGD VOR on PGD R-124 to RACNO, then on RSW R-063 to TTYLR, thence. . .

RACNO TRANSITION (RACNO.TTYLR3): From over RACNO on RSW R-063 to TTYLR, thence. . .

ST PETERSBURG TRANSITION (PIE.TTYLR3): From over PIE VORTAC on PIE R-173 and SRQ R-353 to SRQ VOR/DME, then on SRQ R-139 and PGD R-320 to PGD VOR, then on PGD R-124 to RACNO, then on RSW R-063 to TTYLR, thence. . .

LANDING ALL AIRPORTS: From TTYLR on PALM BEACH VORTAC (PBI) R-291 to cross PBI VORTAC at 3000. Expect RADAR vectors.

TTYLR THREE ARRIVAL

WEST PALM BEACH, FLORIDA

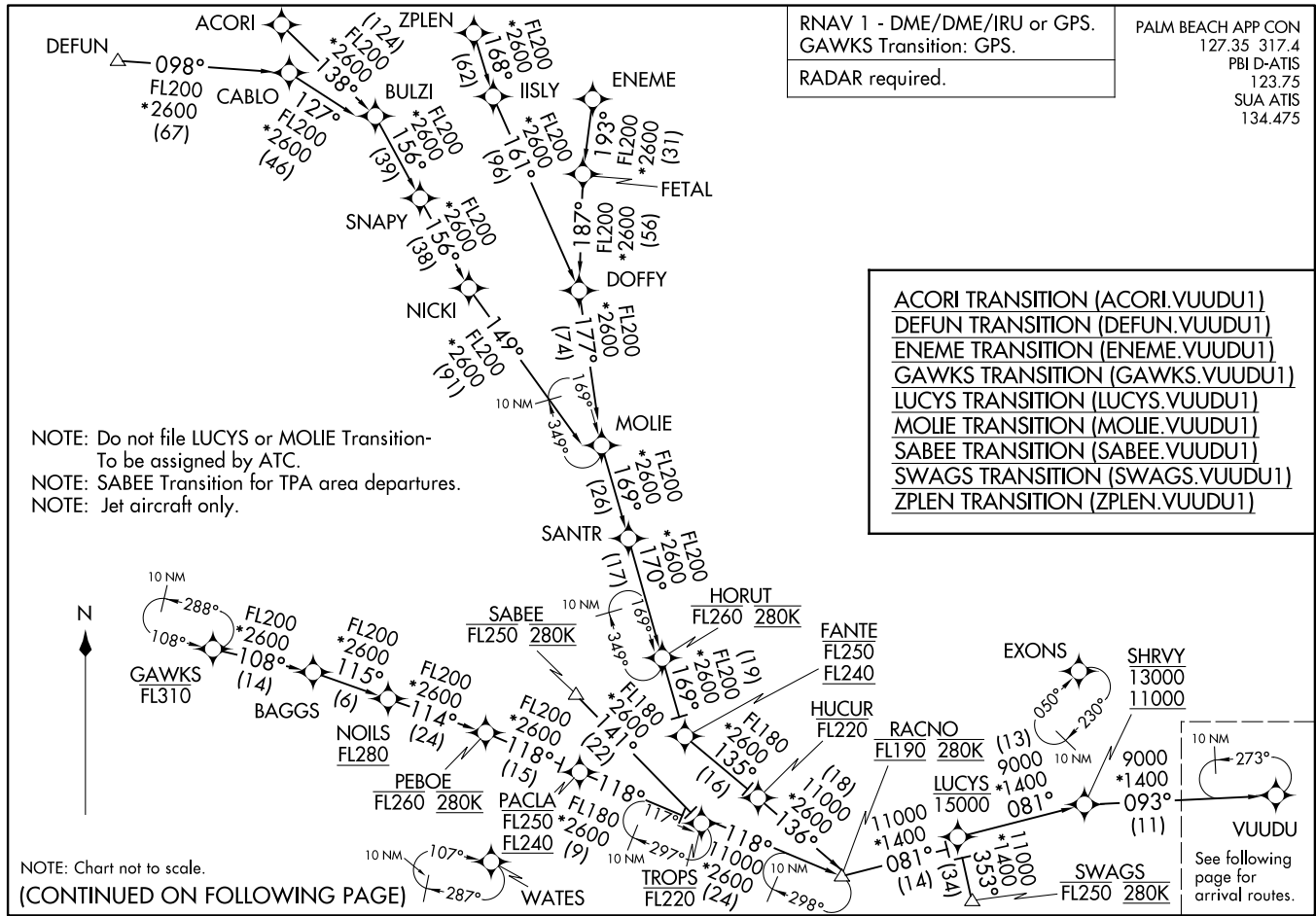
VUUDU ONE ARRIVAL (RNAV) Transition Routes
(VUUDU.VUUDU1) 19MAY22

WEST PALM BEACH, FLORIDA

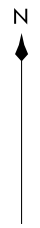
(VUUDU.VUUDU1) 22139
VUUDU ONE ARRIVAL (RNAV) Transition Routes

AL-449 (FAA)

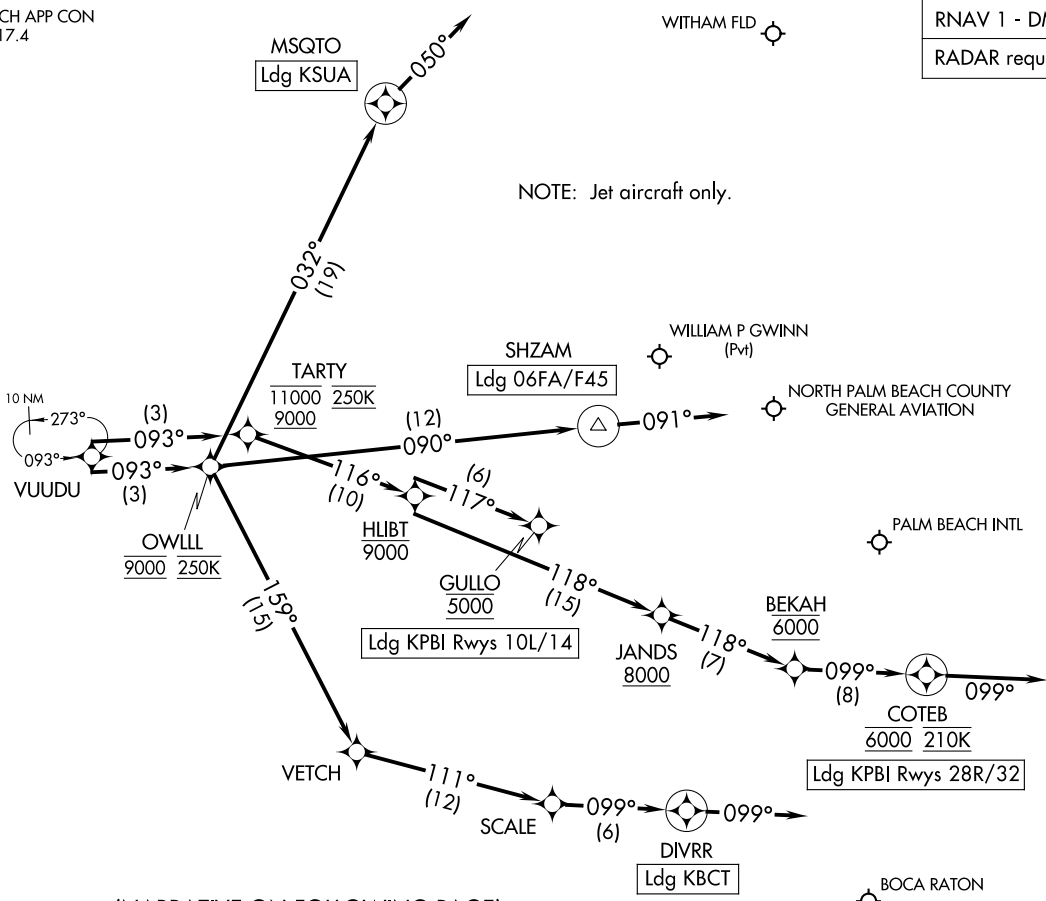
WEST PALM BEACH, FLORIDA



RNAV 1 - DME/DME/IRU or GPS.
RADAR required.



NOTE: Jet aircraft only.



(NARRATIVE ON FOLLOWING PAGE)

NOTE: Chart not to scale.

VUUDU ONE ARRIVAL (RNAV) Arrival Routes WEST PALM BEACH, FLORIDA
(VUUDU, VUUDU1) 19MAY22

(VUUDU, VUUDU1) 23222 AL-449 (FAA) Arrival Routes WEST PALM BEACH, FLORIDA

PALM BEACH APP CON
127.35 317.4
PBI D-ATIS
123.75
SUA ATIS
134-475

ARRIVAL ROUTE DESCRIPTION

KPBI: From VUUDU on track 093° to cross TARTY between 9000 and 11000 and at 250K, then on track 116° to cross HUBT at or below 9000.

LANDING KPBI RUNWAYS 10L, 14: From HUBT on track 117° to cross GULLO at 5000. Expect ILS or LOC RWY 10L, RNAV (RNP) Z RWY 14 approach.

LANDING KPBI RUNWAYS 28R, 32: From HUBT on track 118° to cross JANDS at or above 8000, then on track 118° to cross BEKAH at 6000, then on track 099° to cross COTEB at 6000 and at 210K, then on track 099°. Expect RADAR vectors to final approach course.

LANDING 06FA/F45: From VUUDU on track 093° to cross OWLLL at 9000 and at 250K, then on track 090° to SHZAM, then on heading 091°. Expect RADAR vectors to final approach course.

LANDING KBCT: From VUUDU on track 093° to cross OWLLL at 9000 and at 250K, then on track 159° to VETCH, then on track 111° to SCALE, then on track 099° to DIVRR, then on track 099°. Expect RADAR vectors to final approach course.

LANDING KSUA: From VUUDU on track 093° to cross OWLLL at 9000 and at 250K, then on track 032° to MSQTO, then on heading 050°. Expect RADAR vectors to final approach course.

SE-3, 22 FEB 2024 to 21 MAR 2024

SE-3, 22 FEB 2024 to 21 MAR 2024