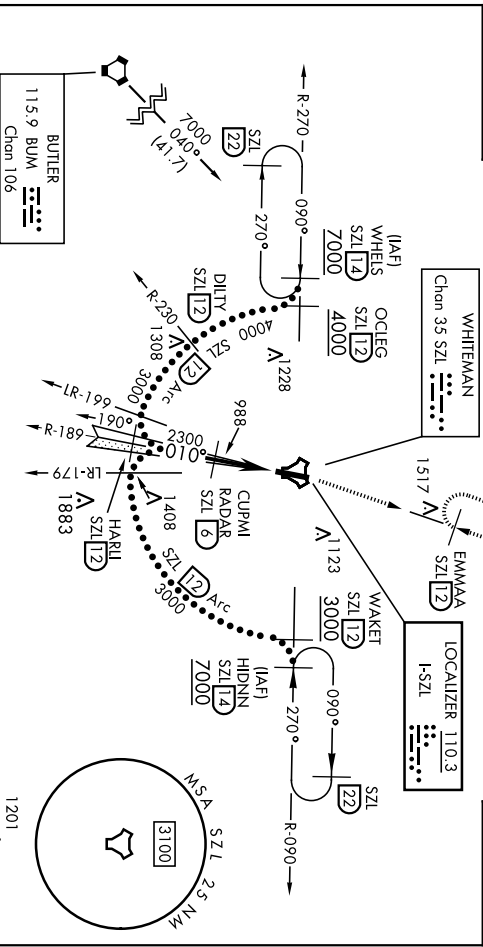
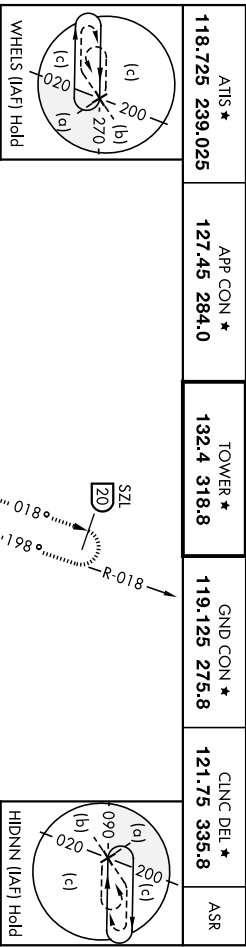


HILLS or LOC Z RWY 1

KNOB NOSTER, MISSOURI

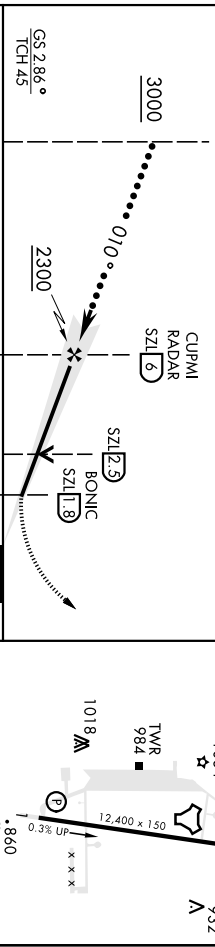
WHITEMAN AFB (KSZL)

LOC I-SZL 110.3	APCH CRS 010°	Rwy Idg 12,400	TDE Elev 837	Alt-496 [USAF]	AISF-1 	MISSED APPROACH- Climb to 3000 vis SZL TAGAN R-018 to EMMAA end hold.
RADAR or DME required		APP CON *	TOWER *	GND CON *	CLNC DEL *	ASR
ATIS * 118.725 239.025		127.45 284.0	132.4 318.8	119.125 275.8	121.75 335.8	
*** When AIS inop, increase CAT CDE RVR to 40 and vis to 3/4 mile. *** Circling not authorized W of Rwy 1-19.						



EMERG SAFE ALT 100 NM 4700

HARRI R-189 SZL 12	VSGL and glidepath not coincident (VGS1 Angle 2.86/TCH 51).	3000 SZL R-018	EMMAA SZL 12
ELEV 871		TDE 837	



CATEGORY	C	D	E
S-ILS 1 **	1037/24	200	[200-1/2]
S-LOC 1 **	1260/40	423	[400-3/4]
CIRCLING ***	1340-1 1/2 469 (500-1 1/2)	1460-2	589 (600-2)
HIRL Rwy 1-19 (A1) 010°			
FAF to MAP 4.2 NM			
Knots	120	140	160 180 200
Min:Sec	2:06	1:48	1:35 1:24

KNOB NOSTER, MISSOURI 38° 44'N-93° 33'W

WHITEMAN AFB (KSZL)

Arr'd 1 10OCT19

HILLS or LOC Z RWY 1

H-I-TACAN Z RWY 1

WHITEMAN AFB (KSZL)

AL496 [USAF]

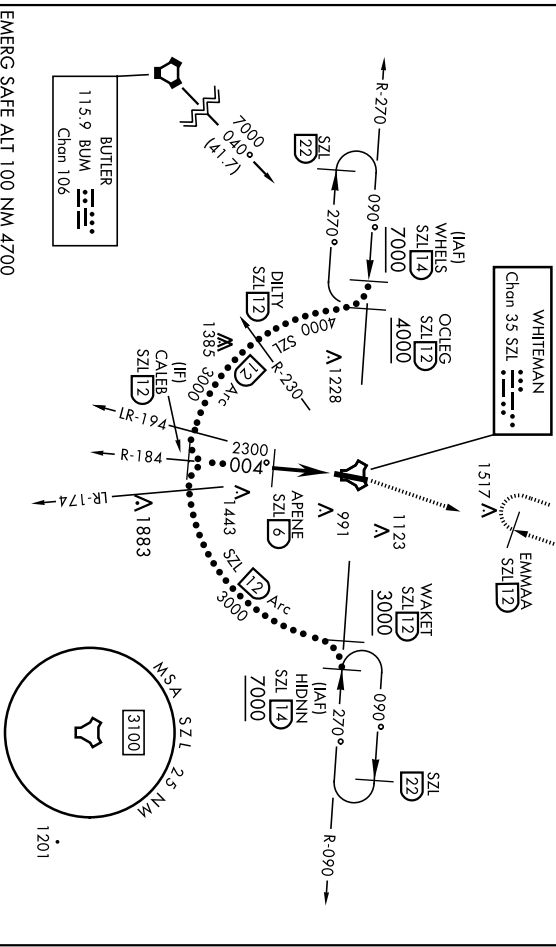
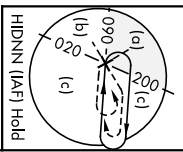
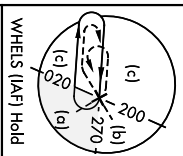
TACAN SZL Chan 35	APCH CRS 004°	Rwy Idg 12,400	TDE Elev 837	Appl Elev 871
----------------------	------------------	-------------------	-----------------	------------------

▲ ** When ALS Inop., increase CAT CDE vis to 1/4 miles.
 ** Circling not authorized W of Rwy 1-19.

ALSF-1

MISSED APPROACH: Climb to 3000 via
 SZL TACAN R-018 to EMMAA and hold.

ATIS ★ 118.725 239.025	APP CON ★ 127.45 284.0	TOWER ★ 132.4 318.8	GND CON ★ 119.125 275.8	CLNC DEL ★ 121.75 335.8	ASR
---------------------------	---------------------------	------------------------	----------------------------	----------------------------	-----



EMERG SAFE ALT 100 NM 4700

CATEGORY	C	D	E
S-1 *	1260/440	423 (400-3%)	
CIRCLINGS **	1340-1 1/2 469 (500-1 1/2)	1460-2 589 (600-2)	
KNOB NOSTER, MISSOURI	38° 44'N-93° 33'W		
Amhd 1 10OCT19			

3000 SZL R-018	EMMAA SZL 12	ELEV 871	TDZE 837
----------------------	--------------------	----------	----------

3000 SZL R-018	EMMAA SZL 12	ELEV 871	TDZE 837
----------------------	--------------------	----------	----------



KNOB NOSTER, MISSOURI

HI-TACAN Z RWY 19

AL-496 [USAF]

WHITEMAN AFB (KSZL)

TACAN SZL Chan 35	APCH CRS 198°	Rwy Idg TDLE Arpt Elev	12,400 871 871
-----------------------------	-------------------------	------------------------------	---

When AIS Inop, increase CAT CDE RVR to 60 and vis to 1 1/8 miles.
** Circling not authorized W of Rwy 1-19.



MISSED APPROACH: Climb to 3000 via SZL TACAN R-184 to CALEB and hold.

AIS *
118.725 239.025

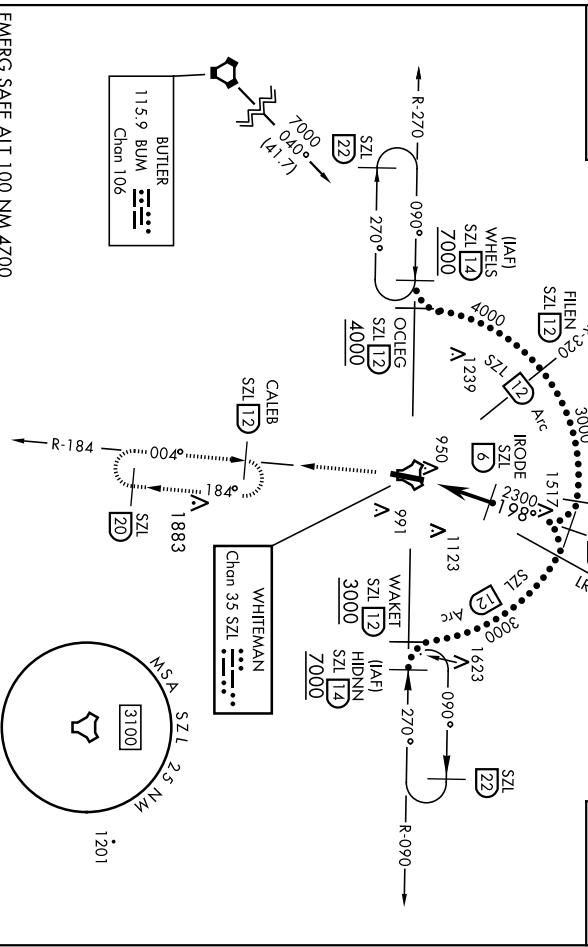
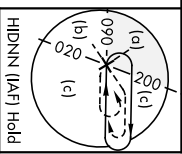
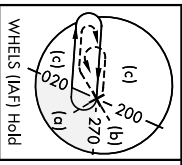
APP CON *
127.45 284.0

TOWER *
132.4 318.8

GND CON *
119.125 275.8

CINC DEL *
121.75 335.8

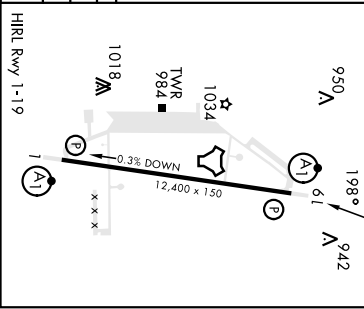
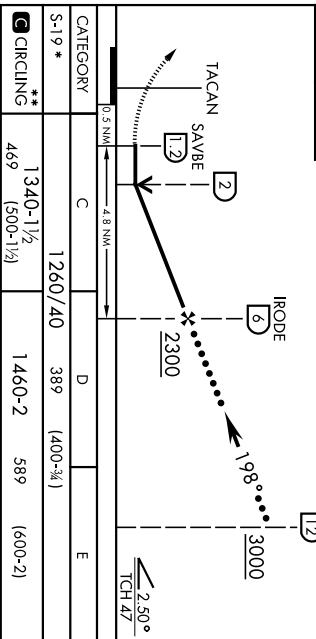
ASR



EMERG SAFE ALT 100 NM 4700

3000 SZL R-184	CALEB SZL 12
----------------------	---------------------------

ELEV 871	TDLE 871
-------------	-------------



CATEGORY	C	D	E
S-19 *	1260/40	389 (400-3/4)	
CIRCLING **	1340-1 1/2 (500-1 1/2)	1460-2 (600-2)	589 (600-2)

KNOB NOSTER, MISSOURI 38° 44' N 93° 33' W
WHITEMAN AFB (KSZL)
Archt 1 100CT19

HI-TACAN Z RWY 19

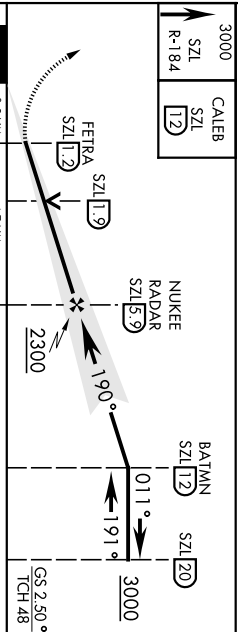
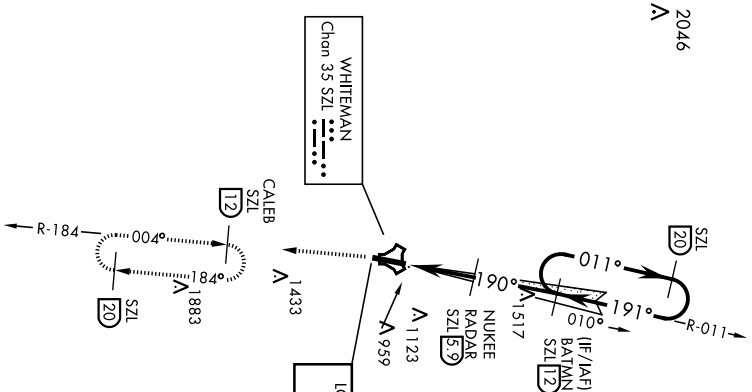
KNOB NOSTER, MISSOURI

23278

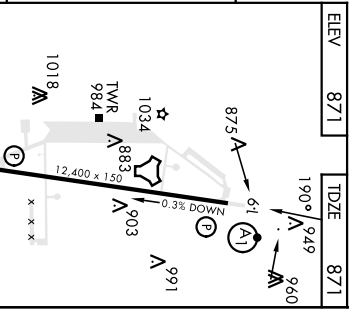
ILS or LOC Y RWY 19

WHITEMAN AFB (KSQL)

LOC I-MXJ 108.5	APCH CRS 190°	Rwy Idg TDZE Elev 871 871 Appt Elev 871	AL-4/96 [USAF]	ALST-1 	MISSED APPROACH: Climb to 3000 via SZL TAGAN R-184 to CALEB and hold.
Radar or DME required *When ALS inop, increase RVR to 40 and vis to 3/4 mile. **When ALS inop, increase RVR to 55 and vis to 1 mile. ***Circling not authorized W of Rwy 1-19.		TOWER * 127.45 284.0	GND CON * 132.4 318.8	CINCL DEL * 119.125 275.8	ASR 121.75 335.8
ATIS * 118.725 239.025		APP CON * 127.45 284.0			



EMERG SAFE ALT 100 NM 4700					
3000 SZL CALEB SZL 120					
R-184					
CATEGORY	A	B	C	D	E
SALS 19 *	1071/24		200	(200-1/2)	
S-IOCL 19 ***	1220/24	349 (400-1/2)	1220/30	349	(400-5/8)
CIRCLING	1300-1	1340-1	1340-1 1/2	1460-2	589 (600-2)
	429 (500-1)	469 (500-1)	469 (500-1 1/2)		
HI RL Rwy 1-19					
FAF to MAP 4.7 NM					
Knots	60	90	120	150	180
Min:Sec	4.42	3.08	2.21	1.53	1.34



NC-3, 22 FEB 2024 to 21 MAR 2024

NC-3, 22 FEB 2024 to 21 MAR 2024

KNOB NOSTER, MISSOURI
Archt 1 100CT19

38°44'N-93°33'W

WHITEMAN AFB (KSQL)
ILS or LOC Y RWY 19

KNOB NOSTER, MISSOURI

RNAV (GPS) RWY 1

APCH CRS 010°	Rwy Idg 12,400
	TDZE 837
	Arprt Elev 871

AL-496 (USAF)

WHITEMAN AFB (KSZL)

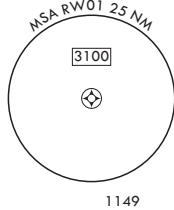
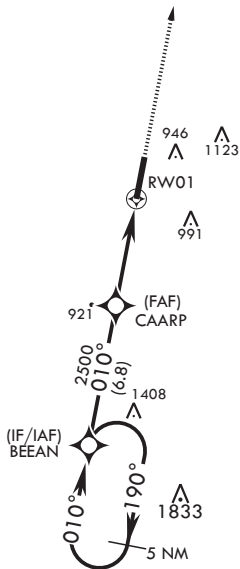
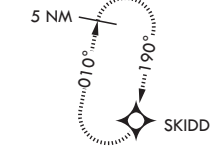
⚠ * When ALS inop, increase CAT AB RVR to 55 and vis to 1 mile, CAT CDE vis to 1 3/8 miles.
 ** Circling not authorized W of Rwy 1-19.



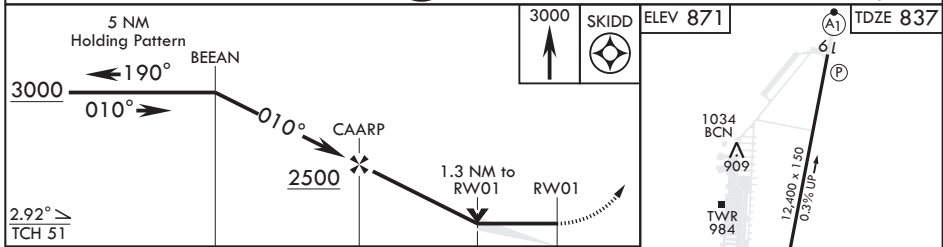
MISSED APPROACH: Climb to 3000 direct SKIDD and hold.

ATIS★ 118.725 239.025	APP CON★ 127.45 284.0	TOWER★ 132.4 318.8	GND CON★ 119.125 275.8	CLNC DEL★ 121.75 335.8	ASR
---------------------------------	---------------------------------	------------------------------	----------------------------------	----------------------------------	-----

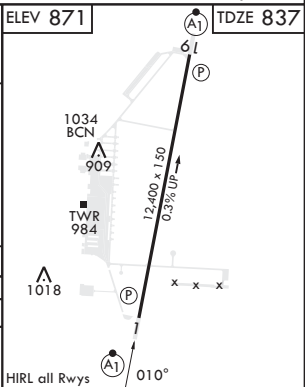
DME/DME RNP 0.3 N/A



EMERG SAFE ALT 100 NM 4700



CATEGORY	A	B	C	D	E
LNAV MDA*	1280/24 443 (500-½)		1280/45 443 (500-¾)		
C CIRCLING**	1300-1 429 (500-1)	1340-1 469 (500-1)	1340-1½ 469 (500-1½)	1460-2 589 (600-2)	



KNOB NOSTER, MISSOURI

38°44'N - 93°33'W

WHITEMAN AFB (KSZL)

Amdt 6 10OCT19

RNAV (GPS) RWY 1

NC-3, 22 FEB 2024 to 21 MAR 2024

NC-3, 22 FEB 2024 to 21 MAR 2024

KNOB NOSTER, MISSOURI

RNAV (GPS) RWY 19

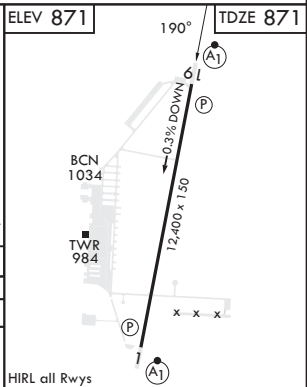
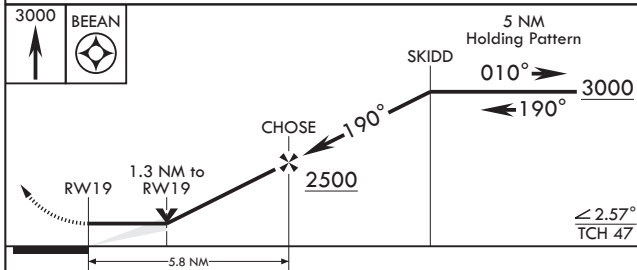
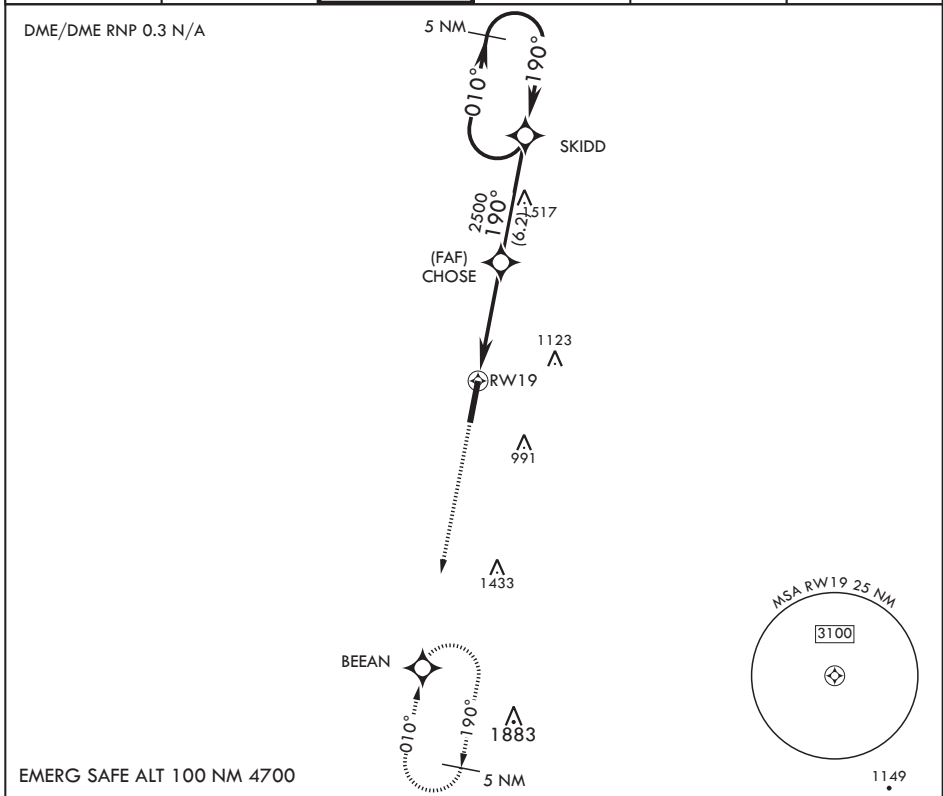
APCH CRS	Rwy Idg	12,400
190°	TDZE	871
	Arprt Elev	871

AL-496 (USAF)

WHITEMAN AFB (KSZL)

ALSF-1 MISSED APPROACH: Climb to 3000 direct BEEAN and hold.
 * When ALS inop, increase CAT AB RVR to 55 and vis to 1 mile, CAT CDE RVR to 60 and vis to 1 1/8 miles.
 ** Circling not authorized W of Rwy 1-19.

ATIS*	APP CON*	TOWER*	GND CON*	CLNC DEL*	ASR
118.725 239.025	127.45 284.0	132.4 318.8	119.125 275.8	121.75 335.8	



CATEGORY	A	B	C	D	E
RNAV MDA*	1260/24	389 (400-½)	1260/35	389	(400-¾)
CIRCLING**	1300-1 429 (500-1)	1340-1 469 (500-1)	1340-1½ 469 (500-1½)	1460-2	589 (600-2)

KNOB NOSTER, MISSOURI

38°44'N - 93°33'W

WHITEMAN AFB (KSZL)

Amdt 6 10OCT19

RNAV (GPS) RWY 19

NC-3, 22 FEB 2024 to 21 MAR 2024

NC-3, 22 FEB 2024 to 21 MAR 2024

KNOB NOSTER, MISSOURI

TACAN Y RWY 1

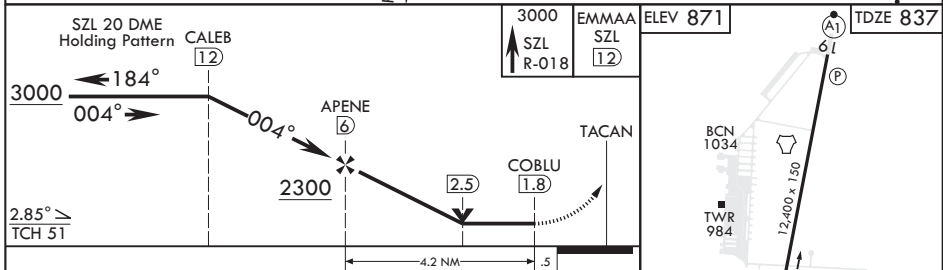
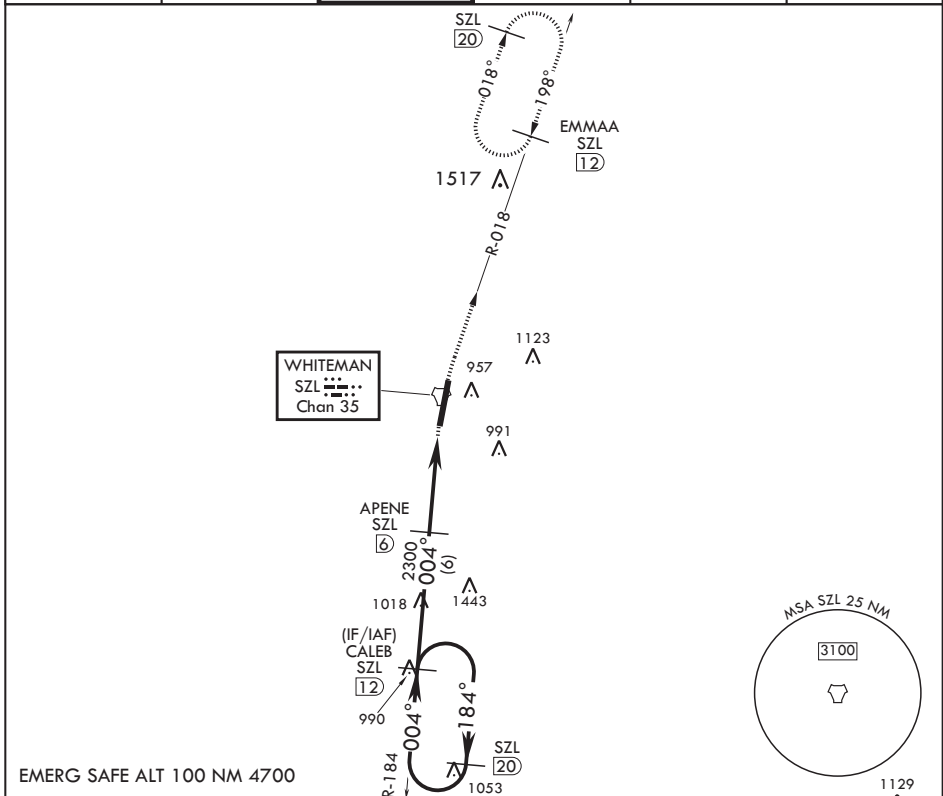
TACAN SZL Chan 35	APCH CRS 004°	Rwy Idg TDZE Arprt Elev	12,400 837 871
----------------------	------------------	-------------------------------	----------------------

AL-496 (USAF)

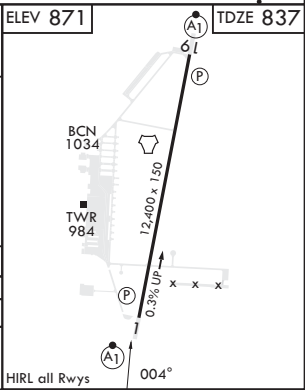
WHITEMAN AFB (KSZL)

<p>⚠ * When ALS inop, increase CAT AB RVR to 55 and vis to 1 mile, CAT CDE vis to 1 1/4 miles. ** Circling not authorized W of Rwy 1-19.</p>	<p>ALS-1 A1</p>	<p>MISSED APPROACH: Climb to 3000 via SZL TACAN R-018 to EMMAA and hold.</p>
--	---------------------	--

ATIS* 118.725 239.025	APP CON* 127.45 284.0	TOWER* 132.4 318.8	GND CON* 119.125 275.8	CLNC DEL* 121.75 335.8	ASR
--------------------------	--------------------------	-----------------------	---------------------------	---------------------------	-----



CATEGORY	A	B	C	D	E
S-1*	1260/24 423 (400-½)		1260/40	423	(400-¾)
CIRCLING**	1300-1 429 (500-1)	1340-1 469 (500-1)	1340-1½ 469 (500-1½)	1460-2	589 (600-2)



NC-3, 22 FEB 2024 to 21 MAR 2024

NC-3, 22 FEB 2024 to 21 MAR 2024

KNOB NOSTER, MISSOURI

38°44'N - 93°33'W

WHITEMAN AFB (KSZL)

Amdt 1 10OCT19

TACAN Y RWY 1

KNOB NOSTER, MISSOURI

TACAN Y RWY 19

TACAN SZL Chan 35	APCH CRS 198°	Rwy Idg TDZE Arprt Elev	12,400 871 871
----------------------	------------------	-------------------------------	----------------------

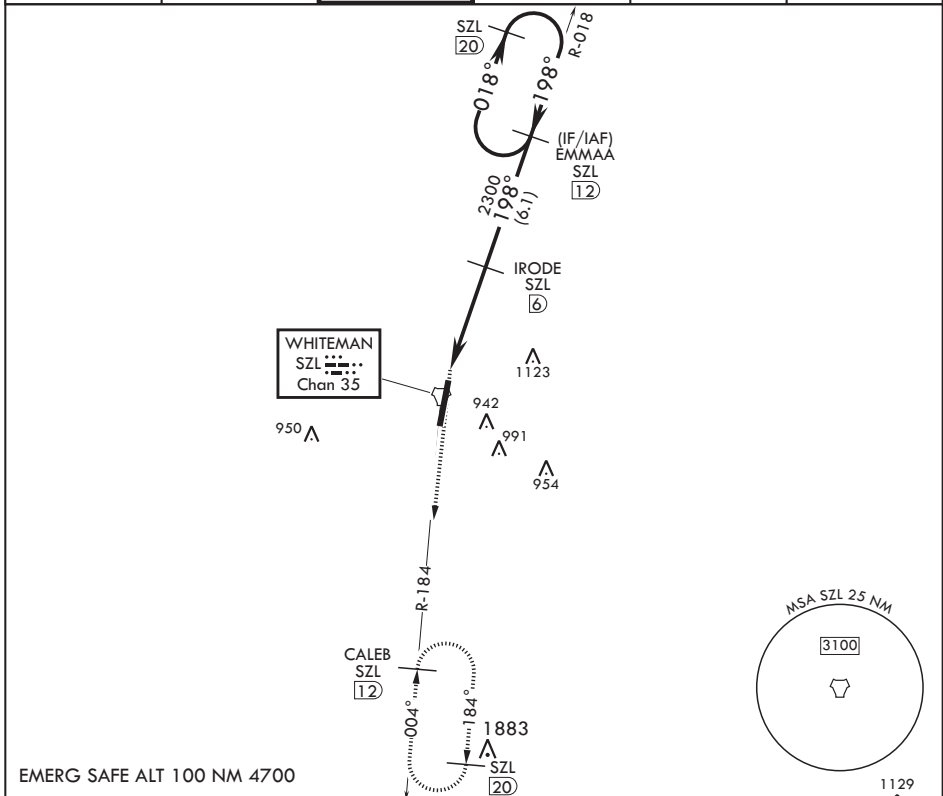
AL-496 (USAF)

WHITEMAN AFB (KSZL)

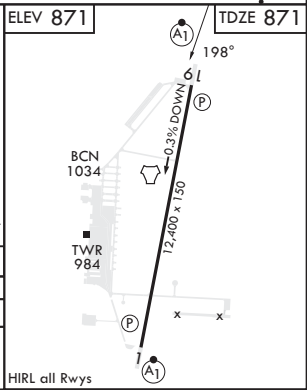
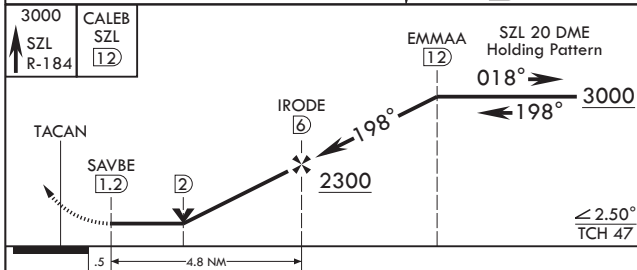
▼ * When ALS inop, increase CAT AB RVR to 55 and vis to 1 mile, CAT CDE RVR to 60 and vis to 1 1/8 miles.
 ** Circling not authorized W of Rwy 1-19.

ALSF-1 MISSED APPROACH: Climb to 3000 via SZL TACAN R-184 to CALEB and hold.

ATIS* 118.725 239.025	APP CON* 127.45 284.0	TOWER* 132.4 318.8	GND CON* 119.125 275.8	CLNC DEL* 121.75 335.8	ASR
--------------------------	--------------------------	-----------------------	---------------------------	---------------------------	-----



EMERG SAFE ALT 100 NM 4700



CATEGORY	A	B	C	D	E
S-19*	1260/24 389 (400-½)		1260/40	389 (400-¾)	
☐ CIRCLING**	1300-1 429 (500-1)	1340-1 469 (500-1)	1340-1½ 469 (500-1½)	1460-2 589 (600-2)	

KNOB NOSTER, MISSOURI
Amdt 1 07NOV19

38°44'N - 93°33'W

WHITEMAN AFB (KSZL)

TACAN Y RWY 19

NC-3, 22 FEB 2024 to 21 MAR 2024

NC-3, 22 FEB 2024 to 21 MAR 2024