

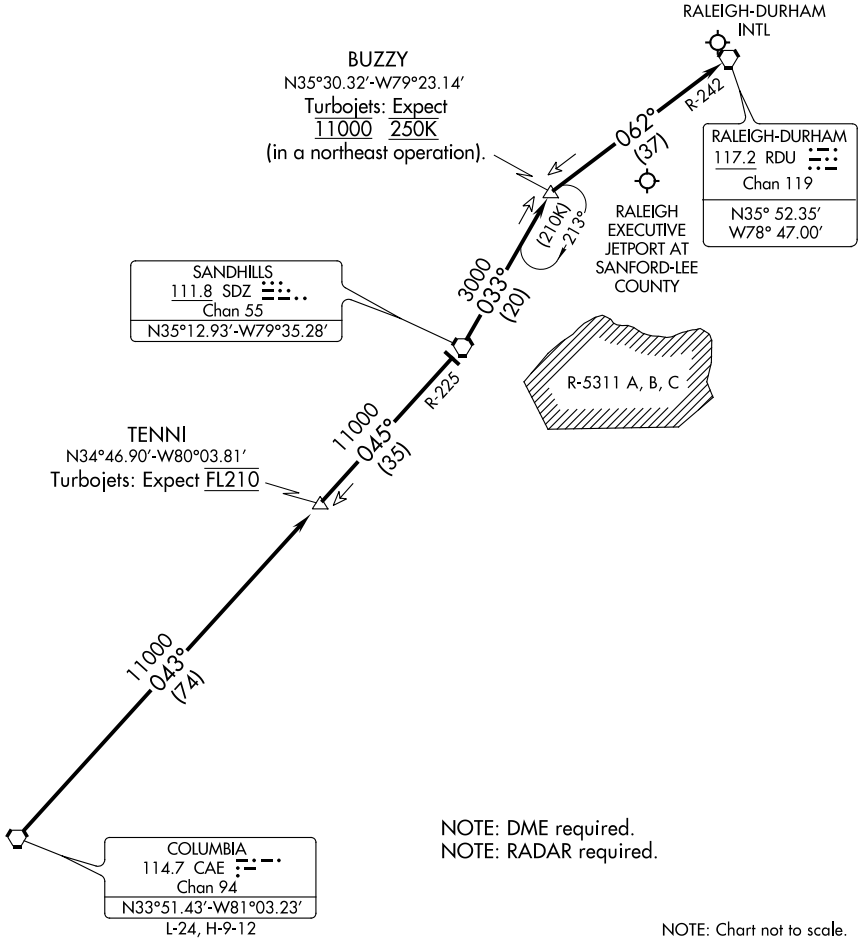
BUZZY NINE ARRIVAL

RALEIGH-DURHAM, NORTH CAROLINA

RALEIGH APP CON
127.675 307.9
RDU D-ATIS
123.8

RALEIGH RGNL AT
PERSON COUNTY

HENDERSON-
OXFORD



SE-2, 08 OCT 2020 to 05 NOV 2020

SE-2, 08 OCT 2020 to 05 NOV 2020

ARRIVAL ROUTE DESCRIPTION

COLUMBIA TRANSITION (CAE.BUZZY9): From over CAE VORTAC on CAE R-043 and SDZ R-225 to SDZ VORTAC, then on SDZ R-033 to BUZZY.

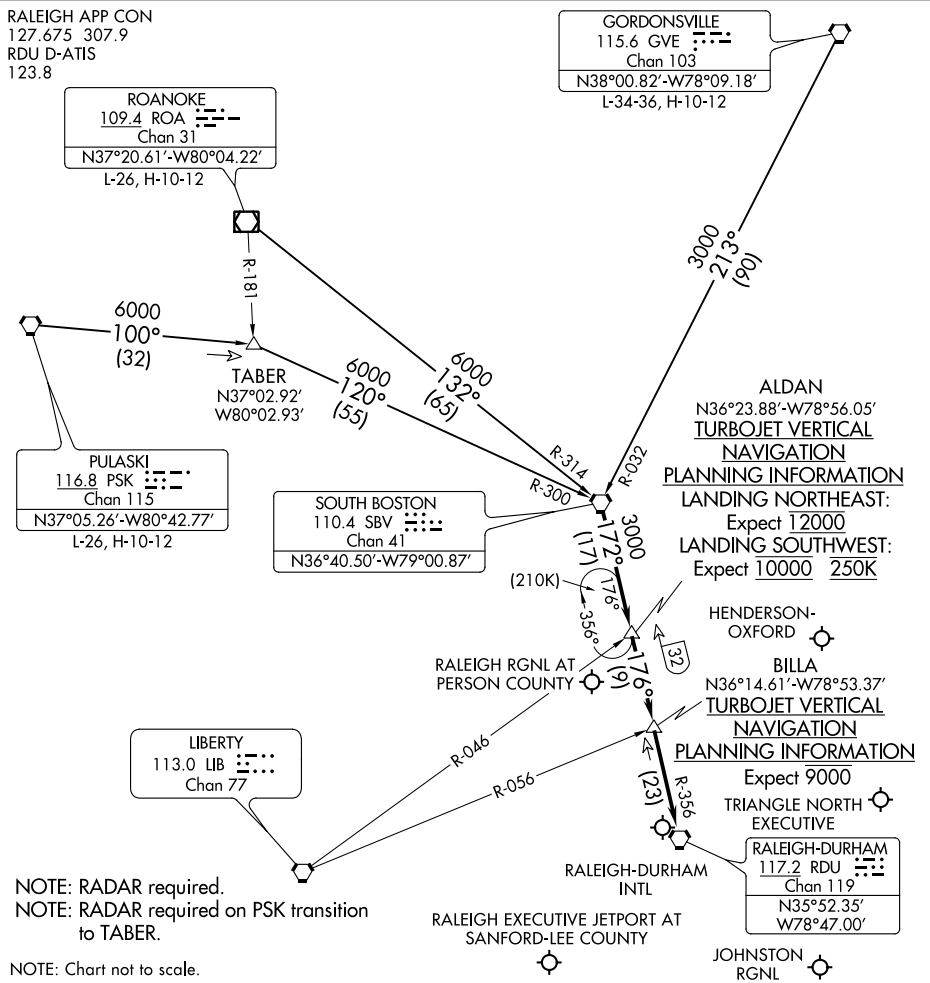
... Thence on RALEIGH/DURHAM VORTAC R-242 to RDU. Expect RADAR vectors to final approach course after BUZZY.

BUZZY NINE ARRIVAL

RALEIGH-DURHAM, NORTH CAROLINA

SOUTH BOSTON SEVEN ARRIVAL

RALEIGH-DURHAM, NORTH CAROLINA



SE-2, 08 OCT 2020 to 05 NOV 2020

SE-2, 08 OCT 2020 to 05 NOV 2020

ARRIVAL ROUTE DESCRIPTION

GORDONSVILLE TRANSITION (GVE.SBV7): From over GVE VORTAC on GVE R-213 and SBV R-032 to SBV VORTAC. Thence. . . .

PULASKI TRANSITION (PSK.SBV7): From over PSK VORTAC on PSK R-100 to TABER, then on SBV R-300 to SBV VORTAC. Thence. . . .

ROANOKE TRANSITION (ROA.SBV7): From over ROA VOR/DME on ROA R-132 and SBV R-314 to SBV VORTAC. Thence

. . . .from over SBV VORTAC on SBV R-172 and RDU VORTAC R-356 to RDU VORTAC. For arrivals to KRDU, KLHZ, KJNX, and KTTA airports: Expect RADAR vectors to final approach course after BILLA.

For arrivals to KHNZ and KTDF airports: Expect RADAR vectors to final approach course after ALDAN.

SOUTH BOSTON SEVEN ARRIVAL

RALEIGH-DURHAM, NORTH CAROLINA