

WAAS CH 86707 W21A	APP CRS 208°	Rwy Idg TDZE 616 Apt Elev 616	4997
--	------------------------	---	-------------

RNAV (GPS) RWY 21

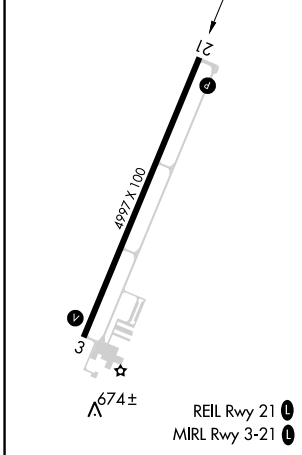
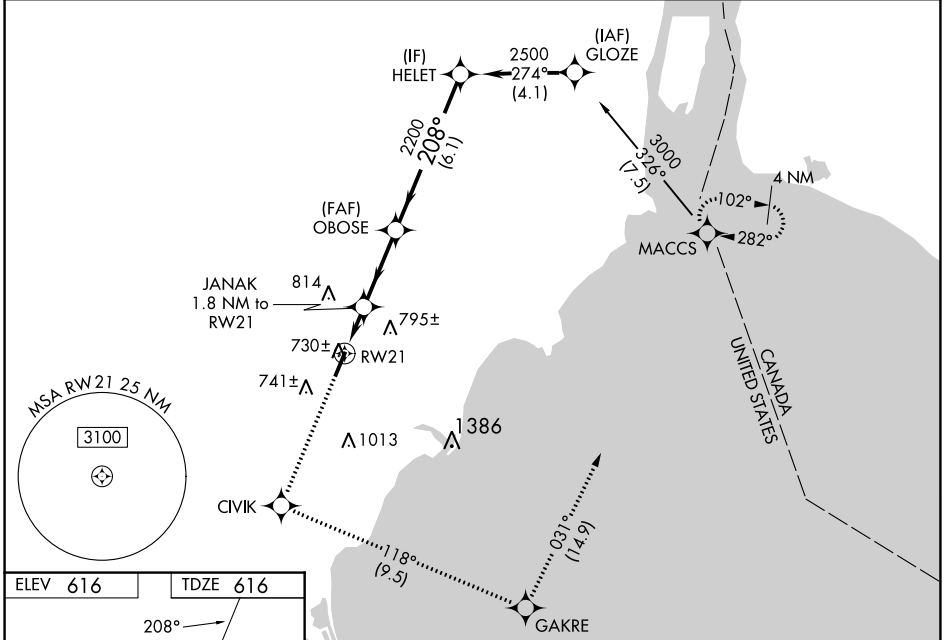
CUSTER (TTF)

RNP APCH - GPS.

⚠ For uncompensated Baro-VNAV systems, LNAV/VNAV NA below -16°C or above 47°C. When local altimeter setting not received, use Detroit Metro Wayne County altimeter setting: increase LPV DA to 1011 feet; increase LNAV/VNAV DA 1054 feet; increase all MDAs 60 feet and visibility LNAV Cat C and Circling Cat C/D ¼ SM. Baro-VNAV and VDP NA when using Detroit Metro Wayne County altimeter setting. Circling to Rwy 3 NA at night.

MISSED APPROACH:
Climb to 3000 direct CIVIK and on track 118° to GAKRE and on track 031° to MACCS and hold.

AWOS-3 119.075	DETROIT APP CON 134.3 363.2	UNICOM 122.7 (CTAF) 0
--------------------------	---------------------------------------	---------------------------------



3000 CIVIK	GAKRE	MACCS	VGSi and RNAV glidepath not coincident (VGSi Angle 3.50/TCH 49).		
↑	tr 118°	tr 031°	HELET		
* LNAV only.			OBOSE		
*0.9 NM RW21 to RW21		JANAK 1.8 NM to RW21	2200	2500	
*1220		2200		GP 3.00° TCH 42	
0.9 NM		0.9 NM	3 NM	6.1 NM	
CATEGORY	A		B	C	D
LPV DA	966-1¼		350 (400-1¼)		
LNAV/VNAV DA	1009-1½		393 (400-1½)		
LNAV MDA	980-1		364 (400-1)		980-1¼ 364 (400-1¼)
CIRCLING	1120-1 504 (600-1)	1180-1 564 (600-1)	1380-2¼ 764 (800-2¼)	1380-2½ 764 (800-2½)	

EC-1, 22 FEB 2024 to 21 MAR 2024

EC-1, 22 FEB 2024 to 21 MAR 2024

APP CRS 027°	Rwy Idg 4997
	TDZE 614
	Apt Elev 616

RNAV (GPS) RWY 3

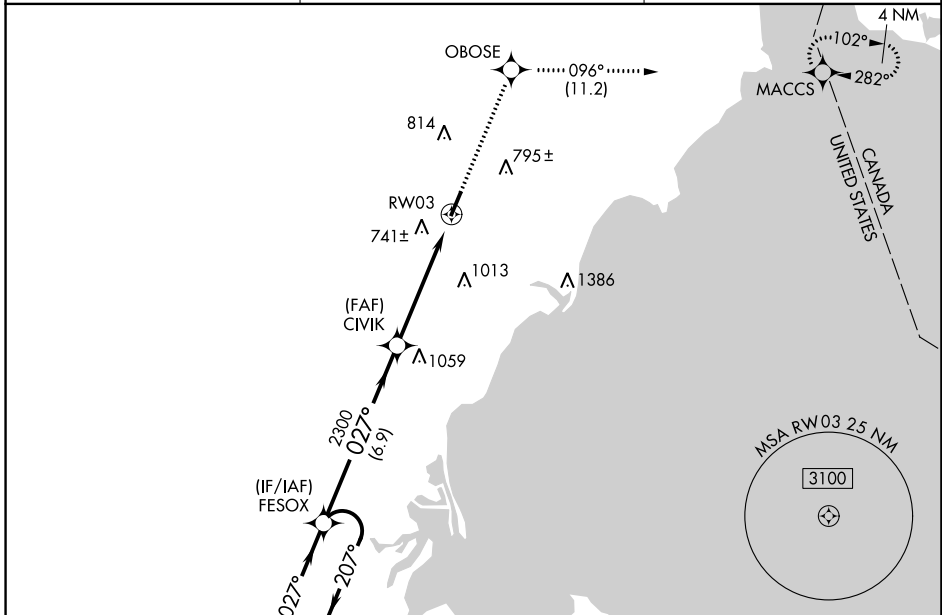
CUSTER (TTF)

RNP APCH - GPS.

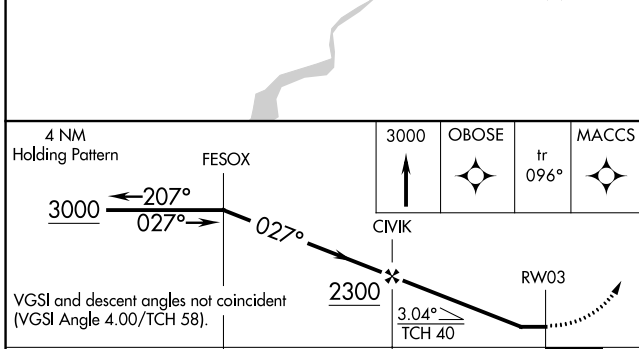
⚠ When local altimeter setting not received, use Detroit Metro Wayne County altimeter setting and increase all MDAs 60 feet and LNAV visibility Cat C/D ¼ SM, and Circling visibility Cat C/D ¼ SM. Rwy 3 helicopter visibility reduction below 1 SM NA. Procedure NA at night.

MISSED APPROACH: Climb to 3000 direct OBOSE and on track 096° to MACCS and hold.

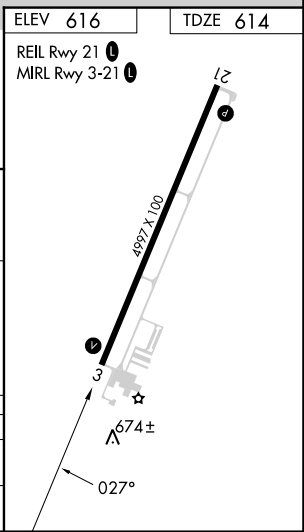
AWOS-3 119.075	DETROIT APP CON 134.3 363.2	UNICOM 122.7 (CTAF) 0
--------------------------	---------------------------------------	---------------------------------



ELEV 616	TDZE 614
----------	----------



CATEGORY	A	B	C	D
LNAV MDA	1100-1	486 (500-1)	1100-1½ 486 (500-1½)	1100-1½ 486 (500-1½)
CIRCLING	1120-1 504 (600-1)	1180-1 564 (600-1)	1380-2½ 764 (800-2½)	1380-2½ 764 (800-2½)



EC-1, 22 FEB 2024 to 21 MAR 2024

EC-1, 22 FEB 2024 to 21 MAR 2024