

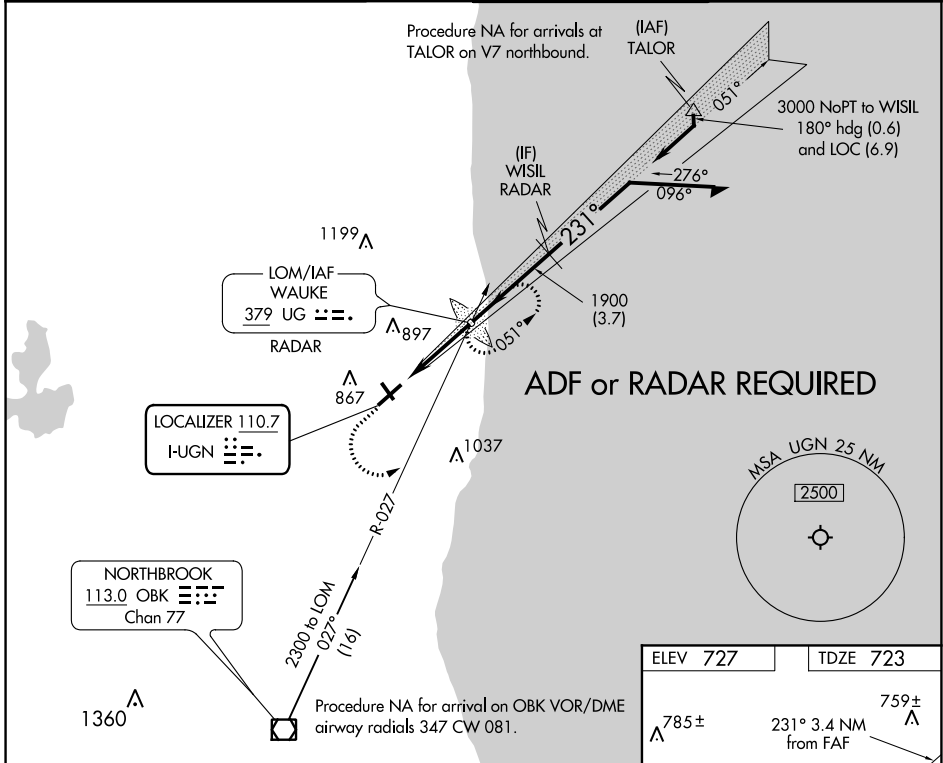
LOC I-UGN 110.7	APP CRS 231°	Rwy Idg 5999	TDZE 723
		Apt Elev 727	

ILS or LOC RWY 23

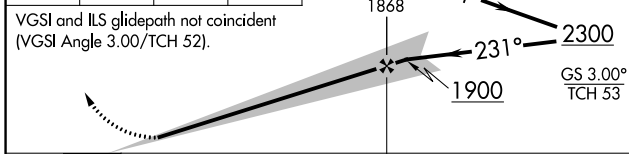
WAUKEGAN NATIONAL (UGN)

<p>Circling to Rwy 14, 32 NA at night. ADF or RADAR required.</p>	<p>MALS</p>	<p>MISSED APPROACH: Climb to 1600 then climbing left turn to 2300 to intercept OBK VOR/DME R-027 to WAUKE LOM/RADAR and hold.</p>

ATIS 132.4	CHICAGO APP CON 120.55	WAUKEGAN TOWER ★ 120.05 (CTAF) 273.55	GND CON 121.65
----------------------	----------------------------------	--	--------------------------



1600	2300	OBK R-027	UG	WAUKE LOM/RADAR	Remain within 10 NM
				1868	051°
					231°
					2300
					1900
					GS 3.00° TCH 53



ELEV 727	TDZE 723
----------	----------

785± Δ

231° 3.4 NM from FAF

759± Δ

003 3750 X-75

5999 Y-150

TWR

5 Δ 757±

HIRL Rwy 5-23 \odot
MIRL Rwy 14-32 \odot

FAF to MAP 3.4 NM					
Knots	60	90	120	150	180
Min:Sec	3:24	2:16	1:42	1:21	1:08

CATEGORY	A	B	C	D
S-ILS 23		923-1/2	200 (200-1/2)	
S-LOC 23		1040-1/2	317 (400-1/2)	
CIRCLING	1220-1	493 (500-1)	1220-1 1/2 493 (500-1 1/2)	1400-2 1/4 673 (700-2 1/4)

EC-3, 08 OCT 2020 to 05 NOV 2020

EC-3, 08 OCT 2020 to 05 NOV 2020

WAAS CH 86211 W23A	APP CRS 232°	Rwy Idg 5999 TDZE 723 Apt Elev 727
--	------------------------	---

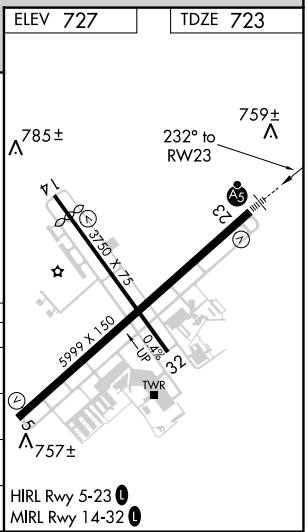
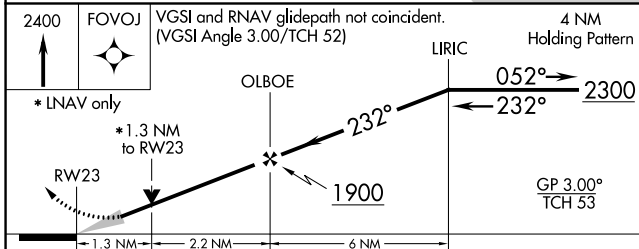
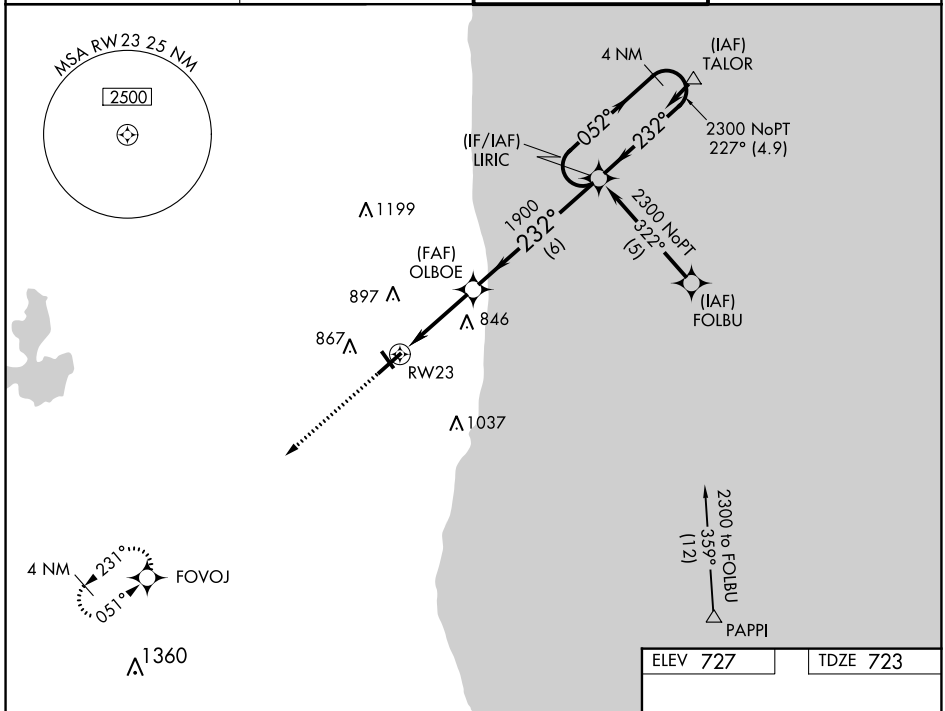
RNAV (GPS) RWY 23

WAUKEGAN NATIONAL (UGN)

⚠ Circling to Rwy 14, 32 NA at night. For uncompensated Baro-VNAV systems, LNAV/VNAV NA below -16°C (4°F) or above 54°C (130°F), DME/DME RNP-0.3 NA. For inoperative ALS, increase LNAV/VNAV all Cats visibility to ½ SM.

MALSR
AS
MISSED APPROACH: Climb to 2400 direct FOVOJ and hold.

ATIS 132.4	CHICAGO APP CON 120.55	WAUKEGAN TOWER ★ 120.05 (CTAF) 0 273.55	GND CON 121.65
----------------------	----------------------------------	---	--------------------------



CATEGORY	A	B	C	D
LPV DA	980-½ 257 (300-½)			
LNAV/VNAV DA	1020-½ 297 (300-½)		1020-¾ 297 (300-¾)	
LNAV MDA	1160-½ 437 (500-½)		1160-¾ 437 (500-¾)	
CIRCLING	1220-1 493 (500-1)		1400-2¼ 673 (700-2¼)	

EC-3, 08 OCT 2020 to 05 NOV 2020

EC-3, 08 OCT 2020 to 05 NOV 2020

WAAS CH 81812 W05A	APP CRS 051°	Rwy Idg 5999 TDZE 725 Apt Elev 727
--	------------------------	---

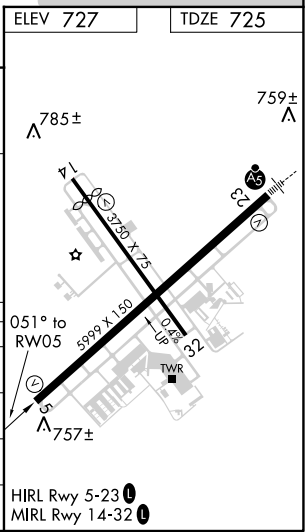
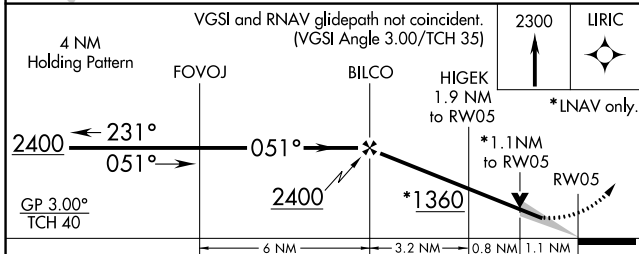
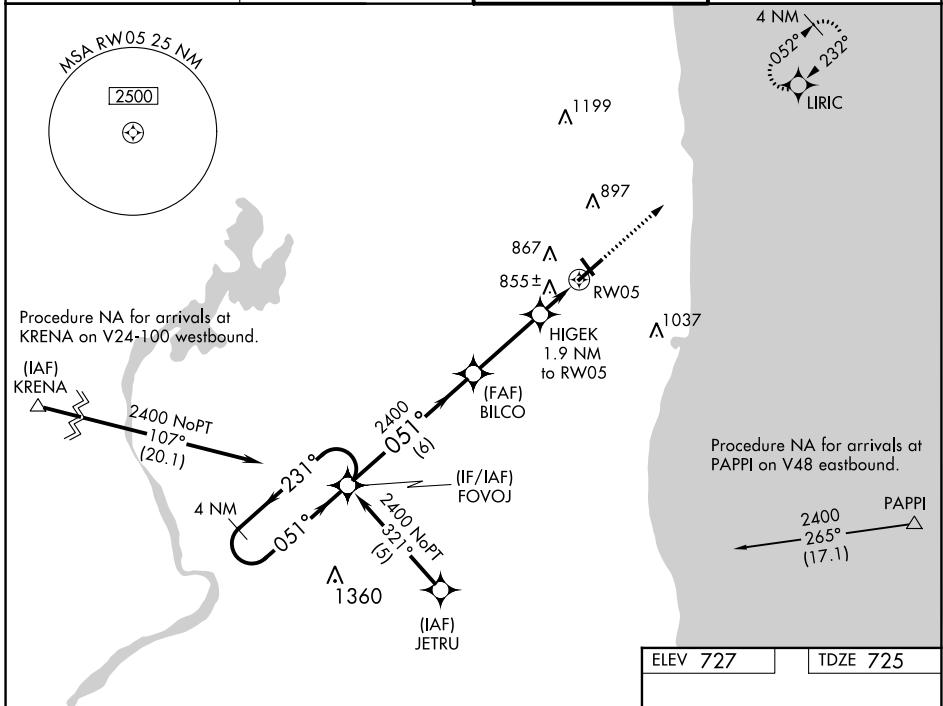
RNAV (GPS) RWY 5

WAUKEGAN NATIONAL (UGN)

⚠ For uncompensated Baro-VNAV systems, LNAV/VNAV NA below -16°C (4°F) or above 54°C (130°F). DME/DME RNP-0.3 NA.
⚠ Circling to Rwy 14/32 NA at night.

MISSED APPROACH: Climb to 2300 direct LIRIC and hold.

ATIS 132.4	CHICAGO APP CON 120.55	WAUKEGAN TOWER ★ 120.05 (CTAF) 0 273.55	GND CON 121.65
----------------------	----------------------------------	--	--------------------------



CATEGORY	A	B	C	D
LPV DA	990-1 265 (300-1)			
LNAV/VNAV DA	1140-1½ 415 (500-1½)			
LNAV MDA	1120-1 395 (400-1)	1120-1½ 395 (400-1½)	1120-1¼ 395 (400-1¼)	
C CIRCLING	1220-1 493 (500-1)	1220-1½ 493 (500-1½)	1400-2¼ 673 (700-2¼)	