

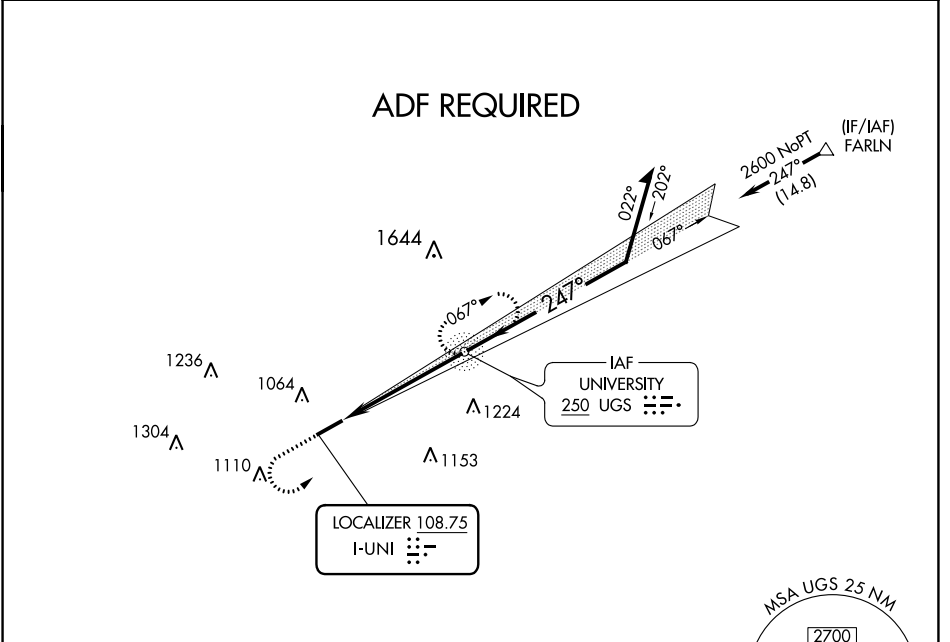
LOC I-UNI <b>108.75</b>	APP CRS <b>247°</b>	Rwy Idg TDZE Apt Elev	<b>5600</b> <b>765</b> <b>766</b>
----------------------------	------------------------	-----------------------------	---

# ILS or LOC RWY 25

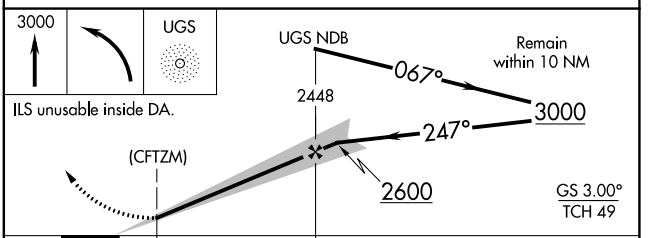
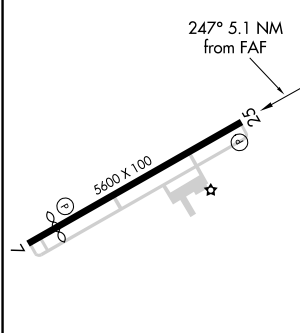
OHIO UNIVERSITY (UNI)

<p><b>▽</b> ADF required.</p> <p><b>△</b> NA</p>	<p>MISSED APPROACH: Climb to 3000 then left turn direct UGS NDB and hold.</p>
--	---

AWOS-3 <b>128.325</b>	HUNTINGTON APP CON <b>120.95 270.1</b>	CLNC DEL <b>120.95</b>	UNICOM <b>123.075</b> (CTAF) <b>0</b>
--------------------------	---	---------------------------	--



ELEV 766	TDZE 765
----------	----------



CATEGORY	A	B	C	D
S-ILS 25	974-1 209 (300-1)			
S-LOC 25	1420-1	655 (700-1)	1420-1 $\frac{7}{8}$	655 (700-1 $\frac{7}{8}$ )
<b>C</b> CIRCLING	1420-1	654 (700-1)	1420-1 $\frac{7}{8}$ 654 (700-1 $\frac{7}{8}$ )	1480-2 $\frac{1}{4}$ 714 (800-2 $\frac{1}{4}$ )

MIRL Rwy 7-25 <b>0</b>					
REIL Rwy 7 and 25 <b>0</b>					
FAF to MAP 4.6 NM					
Knots	60	90	120	150	180
Min:Sec	4:36	3:04	2:18	1:50	1:32

EC-2, 07 OCT 2021 to 04 NOV 2021

EC-2, 07 OCT 2021 to 04 NOV 2021

NDB	UGS	APP CRS	Rwy Idg	<b>5600</b>
<b>250</b>		<b>247°</b>	TDZE	<b>765</b>
			Apt Elev	<b>766</b>

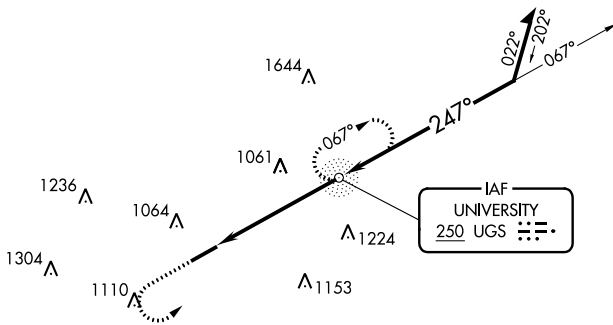
# NDB RWY 25

OHIO UNIVERSITY (UNI)

RADAR required for procedure entry.  
 ▼  
 ▲ NA

MISSED APPROACH: Climb to 3000 then left turn direct UGS NDB and hold.

AWOS-3 <b>128.325</b>	HUNTINGTON APP CON <b>120.95 270.1</b>	CLNC DEL <b>120.95</b>	UNICOM <b>123.075 (CTAF) 0</b>
--------------------------	---	---------------------------	-----------------------------------



EC-2, 07 OCT 2021 to 04 NOV 2021

EC-2, 07 OCT 2021 to 04 NOV 2021

ELEV 766	TDZE 765
----------	----------

247° 5.1 NM from FAF

MIRL Rwy 7-25 0  
 REIL Rwys 7 and 25 0

FAF to MAP 5.1 NM					
Knots	60	90	120	150	180
Min:Sec	5:06	3:24	2:33	2:02	1:42

3000 UGS UGS NDB 067° 3000

Remain within 10 NM

2500 247°

3.16° TCH 41

5.1 NM

CATEGORY	A	B	C	D
S-25	1380-1	615 (700-1)	1380-1¾	615 (700-1¾)
<input checked="" type="checkbox"/> CIRCLING	1380-1	1420-1	1420-1¾	1480-2¼
	614 (700-1)	654 (700-1)	654 (700-1¾)	714 (800-2¼)

WAAS CH <b>90316</b> <b>W25A</b>	APP CRS <b>247°</b>	Rwy Idg <b>5600</b> TDZE <b>765</b> Apt Elev <b>766</b>
--	------------------------	---

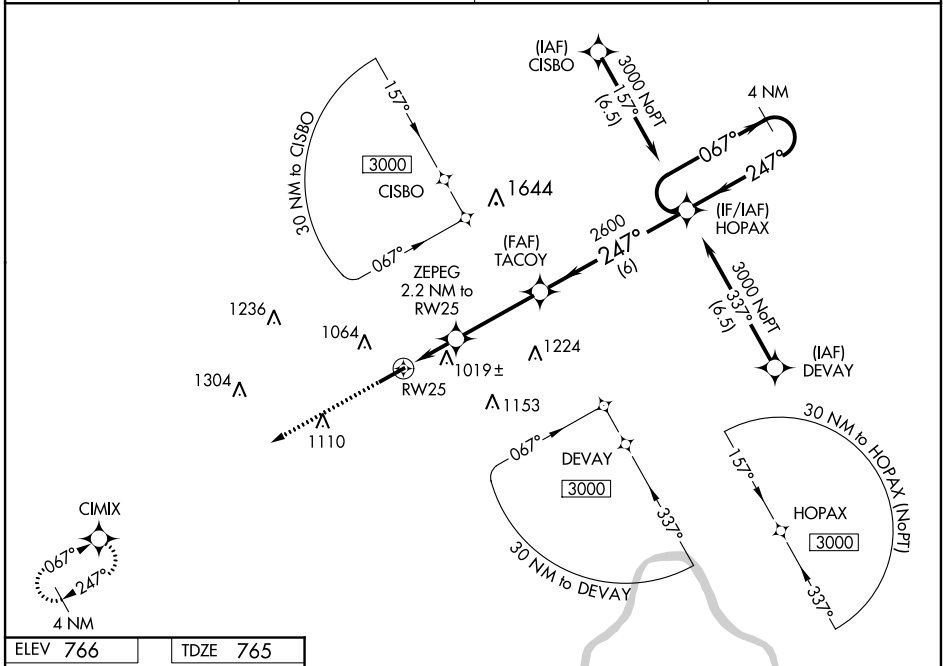
# RNAV (GPS) RWY 25

OHIO UNIVERSITY (UNI)

**⚠** For uncompensated Baro-VNAV systems, LNAV/VNAV NA below -16°C (4°F) or above 54°C (130°F). DME/DME RNP-0.3 NA.

**MISSED APPROACH:**  
Climb to 3000 direct CIMIX and hold.

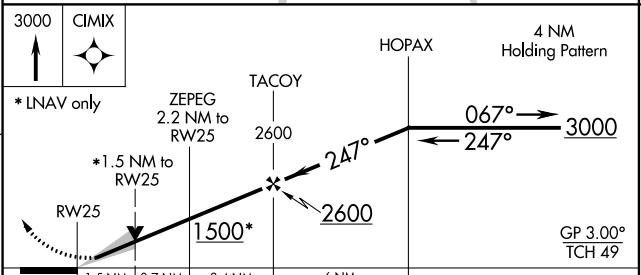
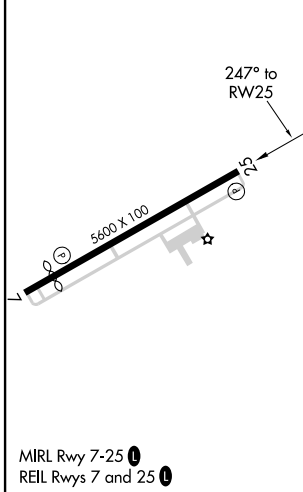
AWOS-3 <b>128.325</b>	HUNTINGTON APP CON <b>120.95 270.1</b>	CLNC DEL <b>120.95</b>	UNICOM <b>123.075 (CTAF) ①</b>
--------------------------	---	---------------------------	-----------------------------------



EC-2, 07 OCT 2021 to 04 NOV 2021

EC-2, 07 OCT 2021 to 04 NOV 2021

ELEV <b>766</b>	TDZE <b>765</b>
-----------------	-----------------



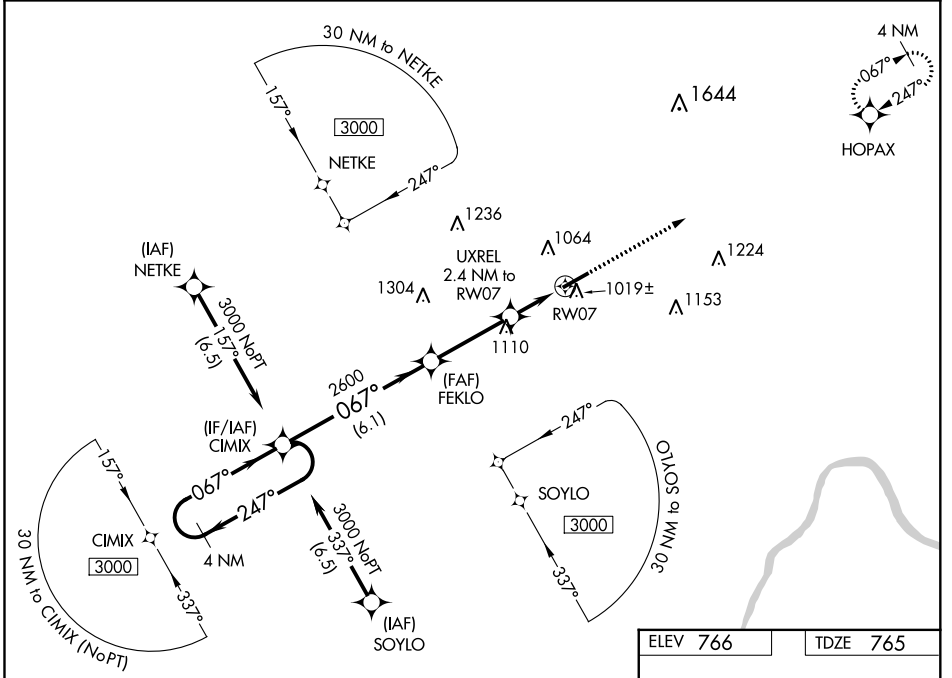
CATEGORY	A	B	C	D
LPV DA		965- <sup>3</sup> / <sub>4</sub>	200 (200- <sup>3</sup> / <sub>4</sub> )	
LNAV/VNAV DA		1356-2	591 (600-2)	
LNAV MDA	1280-1	515 (600-1)	1280-1 <sup>3</sup> / <sub>8</sub>	515 (600-1 <sup>3</sup> / <sub>8</sub> )
<b>C</b> CIRCLING	1380-1	614 (700-1)	1420-1 <sup>3</sup> / <sub>4</sub> 654 (700-1 <sup>3</sup> / <sub>4</sub> )	1480-2 <sup>1</sup> / <sub>4</sub> 714 (800-2 <sup>1</sup> / <sub>4</sub> )

WAAS CH <b>81916</b> <b>W07A</b>	APP CRS <b>067°</b>	Rwy ldg <b>4700</b> TDZE <b>765</b> Apt Elev <b>766</b>
--	------------------------	---

# RNAV (GPS) RWY 7

OHIO UNIVERSITY (UNI)

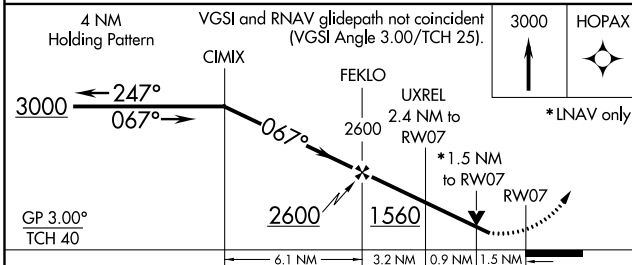
<p><b>⚠</b> For uncompensated Baro-VNAV systems, LNAV/VNAV NA below -1.6°C (4°F) or above 54°C (130°F). DME/DME RNP-0.3 NA. Rwy 7 helicopter visibility reduction below ¼ SM NA.</p>		<p>MISSED APPROACH: Climb to 3000 direct HOPAX and hold.</p>	
AWOS-3 <b>128.325</b>	HUNTINGTON APP CON <b>120.95 270.1</b>	CLNC DEL <b>120.95</b>	UNICOM <b>123.075 (CTAF) 0</b>



EC-2, 07 OCT 2021 to 04 NOV 2021

EC-2, 07 OCT 2021 to 04 NOV 2021

ELEV 766	TDZE 765
----------	----------



CATEGORY	A	B	C	D
LPV DA	1184-1½		419 (500-1½)	
LNAV/VNAV DA	1202-1½		437 (500-1½)	
LNAV MDA	1280-1	515 (600-1)	1280-1⅜	515 (600-1⅜)
<b>C</b> CIRCLING	1380-1	614 (700-1)	1420-1¾ 654 (700-1¾)	1480-2¼ 714 (800-2¼)

