

APP CRS	Rwy Idg	5101
179°	TDZE	1227
	Apt Elev	1228

RNAV (GPS) RWY 18

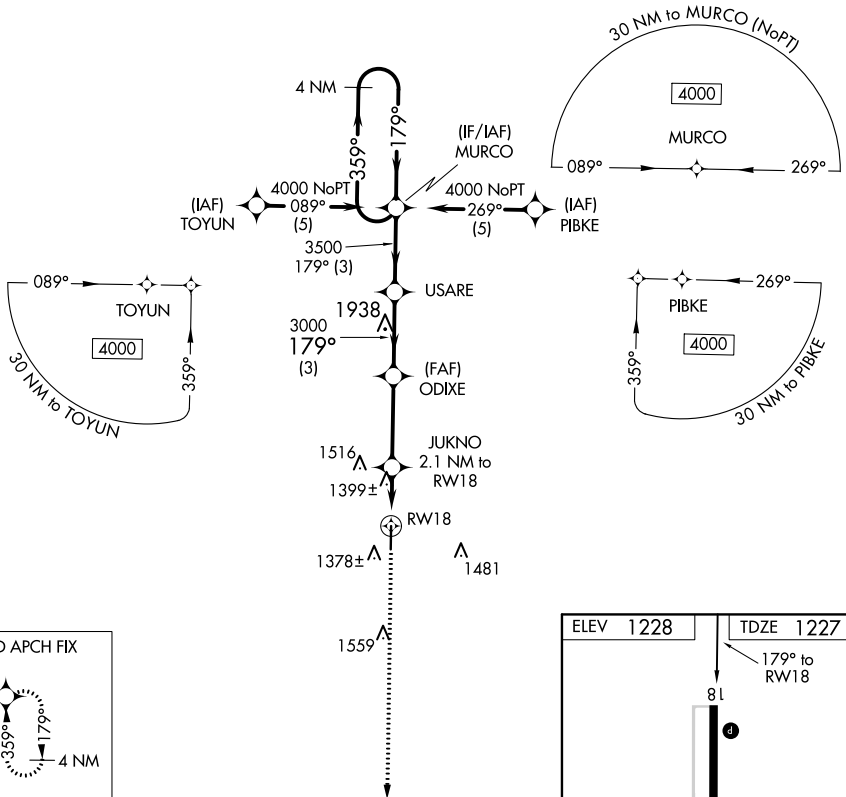
WEST PLAINS RGNL (UNO)

▼ DME/DME RNP-0.3 NA. Visibility reduction by helicopters NA. When local altimeter setting not received, use Mountain Home, AR altimeter setting and increase all MDA 140 feet and increase LNAV and Circling Cat C visibility ¼ mile. When VGSi inop, Straight-in NA at night.

▲

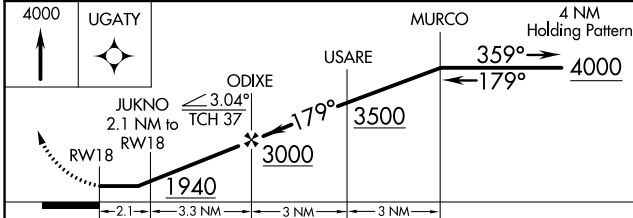
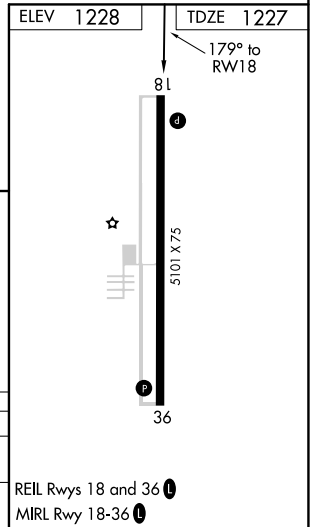
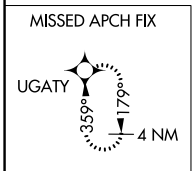
MISSED APPROACH: Climb to 4000 direct UGATY and hold.

ASOS 123.825	MEMPHIS CENTER 120.075 289.4	UNICOM 122.8 (CTAF) ①
------------------------	--	---------------------------------



NC-3, 27 JAN 2022 to 24 FEB 2022

NC-3, 27 JAN 2022 to 24 FEB 2022



CATEGORY	A	B	C	D
LNAV MDA	1660-1	433 (500-1)	1660-1½ 433 (500-1½)	NA
CIRCLING	1700-1	472 (500-1)	1720-1½ 492 (500-1½)	NA

REIL Rwy 18 and 36 ①
MIRL Rwy 18-36 ①

WAAS CH 40202 W36A	APP CRS 359°	Rwy Idg TDZE Apt Elev	5101 1228 1228
--	------------------------	-----------------------------	---

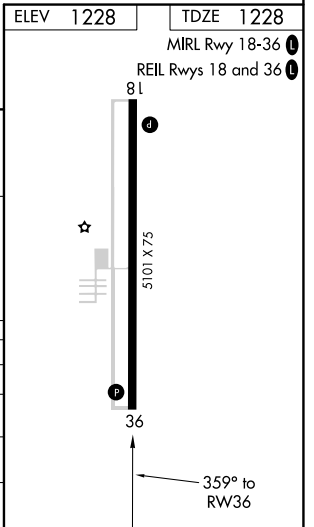
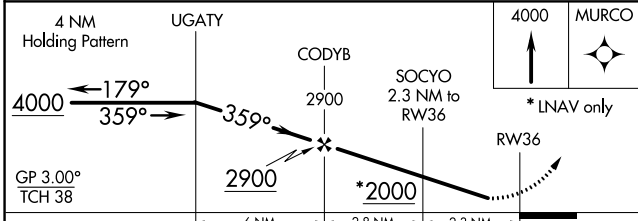
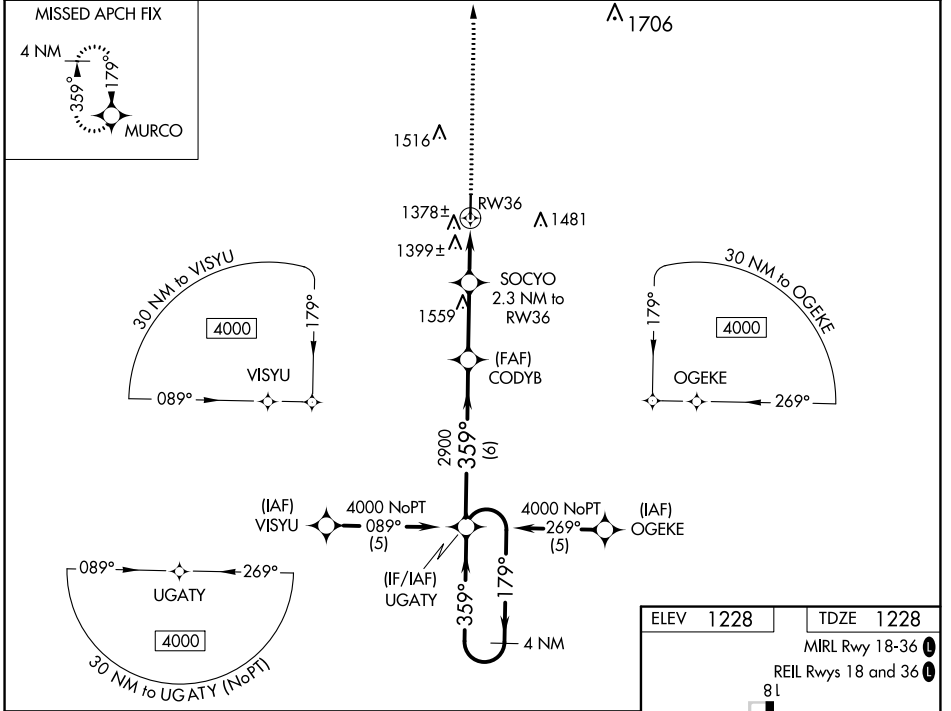
RNAV (GPS) RWY 36

WEST PLAINS RGNL (UNO)

⚠ When VGS1 Inop, circling Rwy 18 NA at night. Baro-VNAV NA when using Mountain Home altimeter setting. DME/DME RNP-0.3 NA. Visibility reduction by helicopters NA. When local altimeter setting not received, use Mountain Home, AR altimeter setting and increase all DA/MDA 140 feet, increase LPV all Cats visibility ½ mile, LNAV/VNAV all Cats visibility ¼ mile and LNAV and Circling Cat C visibility ¼ mile. For uncompensated Baro-VNAV systems, LNAV/VNAV NA below -17°C (2°F) or above 54°C (130°F).

MISSED APPROACH: Climb to 4000 direct MURCO and hold.

ASOS 123.825	MEMPHIS CENTER 120.075 289.4	UNICOM 122.8 (CTAF) 0
------------------------	--	---------------------------------



CATEGORY	A	B	C	D
LPV DA	1520-1	292 (300-1)		NA
LNAV/VNAV DA	1713-1¾	485 (500-1¾)		NA
LNAV MDA	1660-1	432 (500-1)	1660-1¼ 432 (500-1¼)	NA
CIRCLING	1700-1	472 (500-1)	1720-1½ 492 (500-1½)	NA

NC-3, 27 JAN 2022 to 24 FEB 2022

NC-3, 27 JAN 2022 to 24 FEB 2022